

Wireless Music Station for PC and Mac User Manual (2.4GHZ Transmitter & Receiver)

* Warning Statement.....	2 , 3
* Product Ovreview.....	4
* How to use the Wireless Music...	5
* Certification.....	11

Warning Statement

FCC Guidelines

This device complies with Part 15 of the FCC Rules. Operation is subject to the following two conditions:

- (1) this device may not cause harmful interference, and
- (2) this device must accept any interference received, including interference that may cause undesired operation.

Any changes or modifications not expressly approved by the party responsible for compliance could void the user's authority to operate the equipment.

15.21

CAUTION: any changes or modifications not expressly approved by the party responsible for compliance could void the user's authority to operate the equipment.

15.105 Federal Communications commission (FCC) Requirements, Part 15

This equipment has been tested and found to comply with the limits for a class B digital device, pursuant to part 15 of the FCC Rules. These limits are designed to provide reasonable protection against harmful interference in a residential installation.

This equipment generates, uses and can radiate radio frequency energy and, if not installed and used in accordance with the instructions, may cause harmful interference to radio communications. However, there is no guarantee that interference will not occur in a particular installation. If this equipment does cause harmful interference to radio or television reception, which can be determined by turning the equipment off and on, the user is encouraged to try to correct the interference by one or more of the following measures:

- Reorient or relocate the receiving antenna.
- Increase the separation between the equipment and receiver.
- Connect the equipment into an outlet on a circuit different from that to which the receiver is connected.
- Consult the dealer or an experienced radio/TV technician for help.

Caution Statement of the FCC Radio Frequency Exposure

This Wireless LAN radio device has been evaluated under FCC Bulletin OET 65C and found compliant to the requirements as set forth in CFR 47 Sections 2.1091, 2.1093, and 15.247(b)(4) addressing RF Exposure from radio frequency devices. The radiation output power of this Wireless LAN device is far below the FCC radio frequency exposure limits. Nevertheless, this device shall be used in such a manner that the potential for human contact during normal operation—as a mobile or portable device but use in a body-worn way is strictly prohibit. When using this device, a certain separation distance between antenna and nearby persons has to be kept to ensure RF exposure compliance.

Declaration of Conformity for R&TTE directive 1999/5/EC

Essential requirements – Article 3

Protection requirements for health and safety – Article 3.1a

Testing for electric safety according to EN 60950-1 has been conducted. These are considered relevant and sufficient.

Protection requirements for electromagnetic compatibility – Article 3.1b

Testing for electromagnetic compatibility according to EN 301 489-1, EN 301 489-3 has been conducted. These are considered relevant and sufficient.

Effective use of the radio spectrum – Article 3.2

Testing for radio test suites according to EN 300 440-2 has been conducted. These are considered relevant and sufficient.

Hereby, [Dong Guan Jess-Link Electronics Co., Ltd.], declares that this device is in compliance with the essential requirements and other relevant provisions of Directive 1999/5/EC.

經型式認證合格之低功率射頻電機，非經許可，公司、商號或使用者均不得擅自變更頻率、加大功率或變更原設計之特性及功能。

低功率射頻電機之使用不得影響飛航安全及干擾合法通信；經發現有干擾現象時，應立即停用，並改善至無干擾時方得繼續使用。

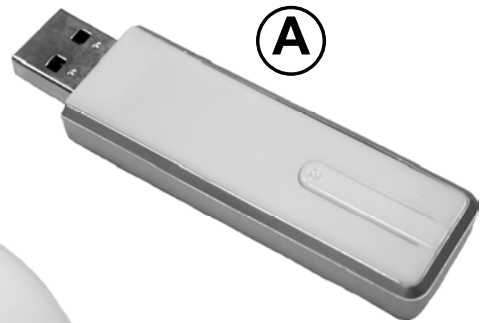
前項合法通信，指依電信法規定作業之無線電通信。

低功率射頻電機須忍受合法通信或工業、科學及醫療用電波輻射性電機設備之干擾。

Product Overview



(C)

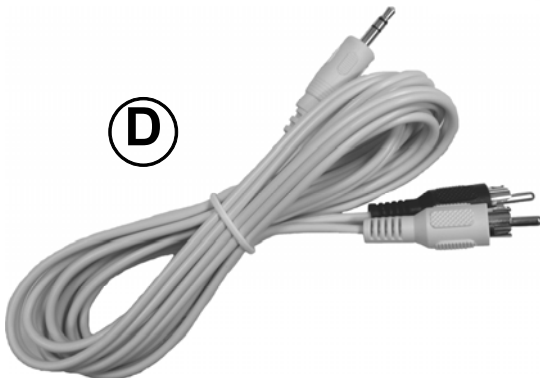


(A)

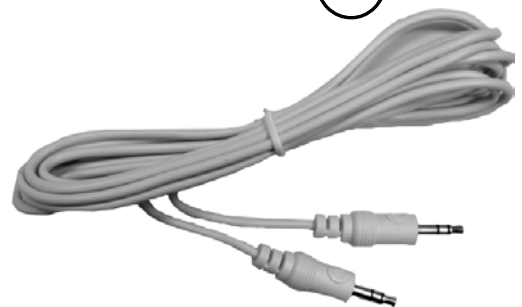
(B)



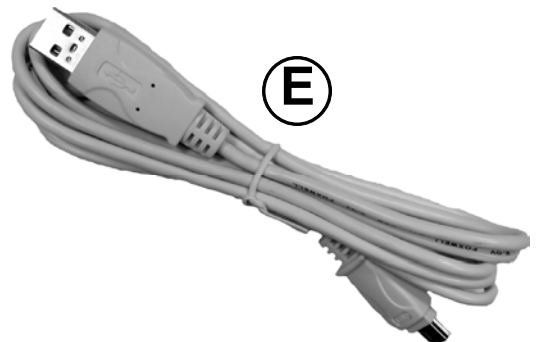
(D)



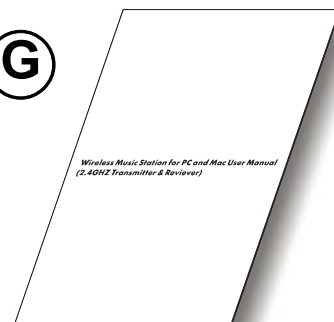
(F)



(E)



(G)



- (A) USB Transmit Dongle
- (B) Music Receive Box
- (C) Power Adapter
- (D) 3.5mm Phone Plug to RCA Cable
- (E) USB Cable for Charging
- (F) 3.5mm Phone Plug to 3.5mm Phone Plug Cable
- (G) User Manual

How to use the Wireless Music:

1. Connect the USB Transmit Dongle into a USB Port on your PC or Mac.



圖 1

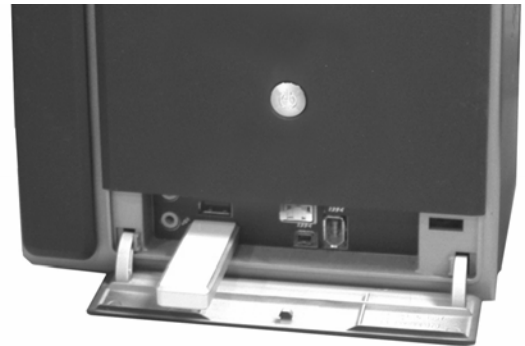


圖 2, GD 插入桌上型電腦

2. Connect the Music Receive Box to your speaker system

For home stereo / home theater systems

- 1) Take Phone Plug to RCA Cable (D) and plug the end of 3.5mm phone plug into the jack on the Music Receive Box where it shows LINE OUT.
- 2) Plug the other end into an “aux input” or “line-in” jack on your home stereo.
- 3) Take USB Cable (E) and plug mini USB head into the Music Receiver Box, and plug the other end into Power Adapter (C)



圖 1, FX 插上音響

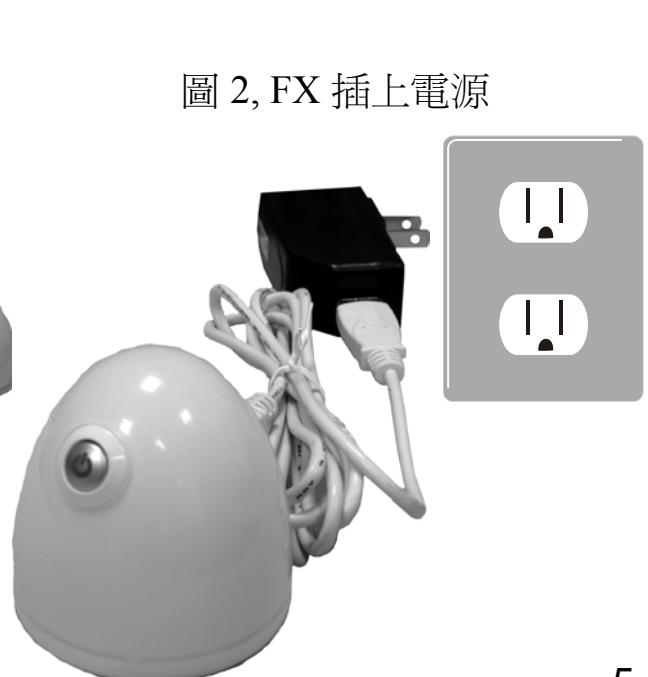


圖 2, FX 插上電源

OR For powered multimedia speakers

- 1) Plug the 3.5mm Phone plug cable from the speakers into the Music Receive Box.
- 2) Take USB Cable (E) and plug mini USB head into the Music Receiver Box, and plug the other end into Power Adapter (C)



圖 1, FX 插上音響

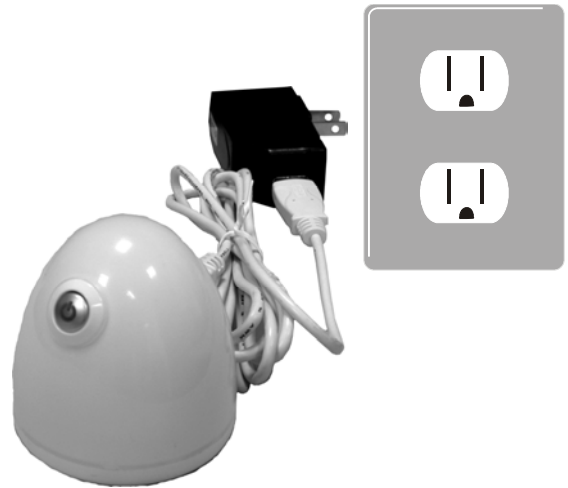


圖 2, FX 插上電源

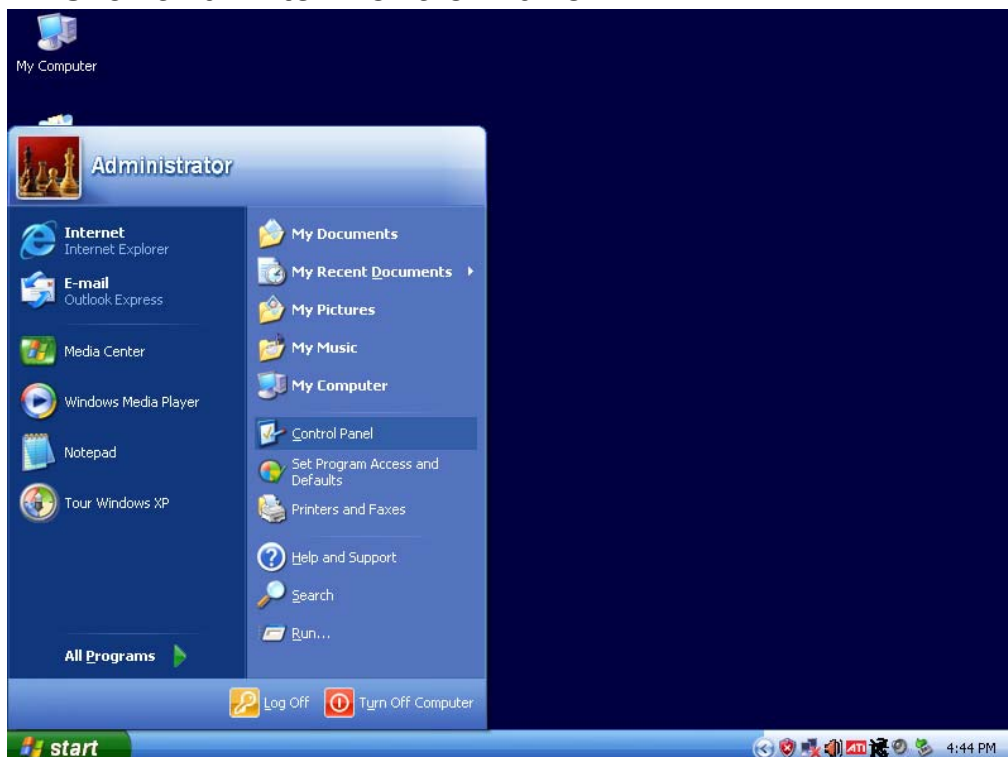
3. Press Play and Listen to Music

- 1) Please make sure if the USB Speaker setting as the Audio Default Device.

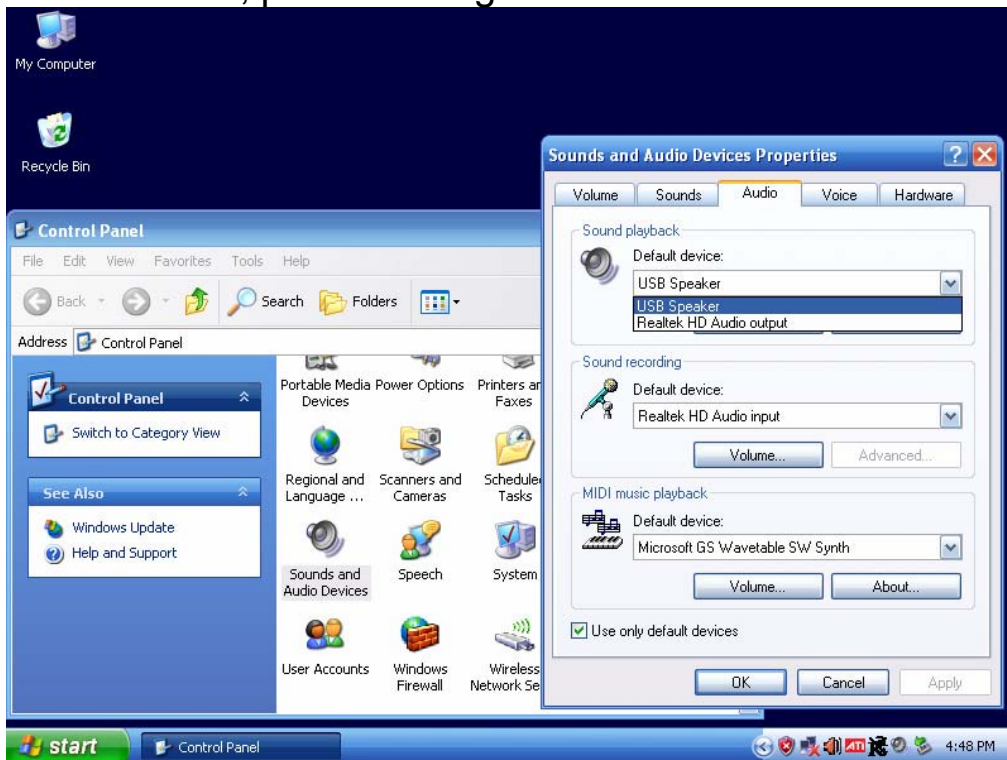
For PC (Windows XP):

→ Click and Open the **Start** Manual

→ Click and Enter **Control Panel**



- Click and Enter **Sounds and Audio Devices**
- Click the **Audio** column
- Check whether the USB Speaker sets as the Audio Default Device. If not, please change the default device to USB Speaker.

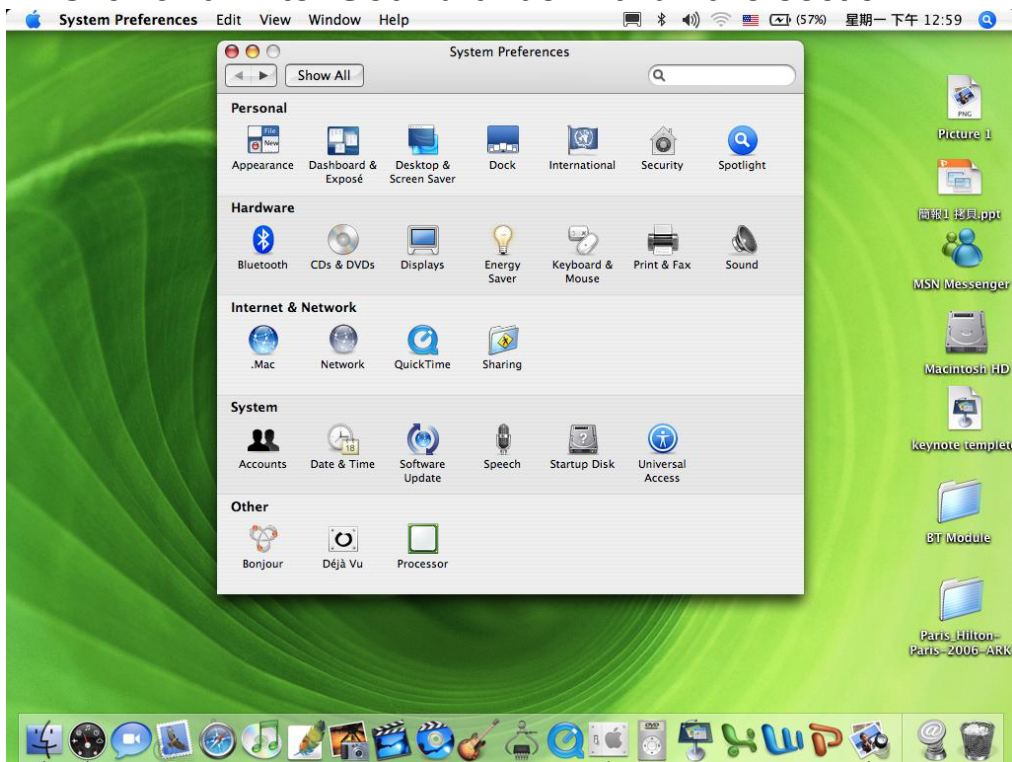


For Mac (Version 10 and above)

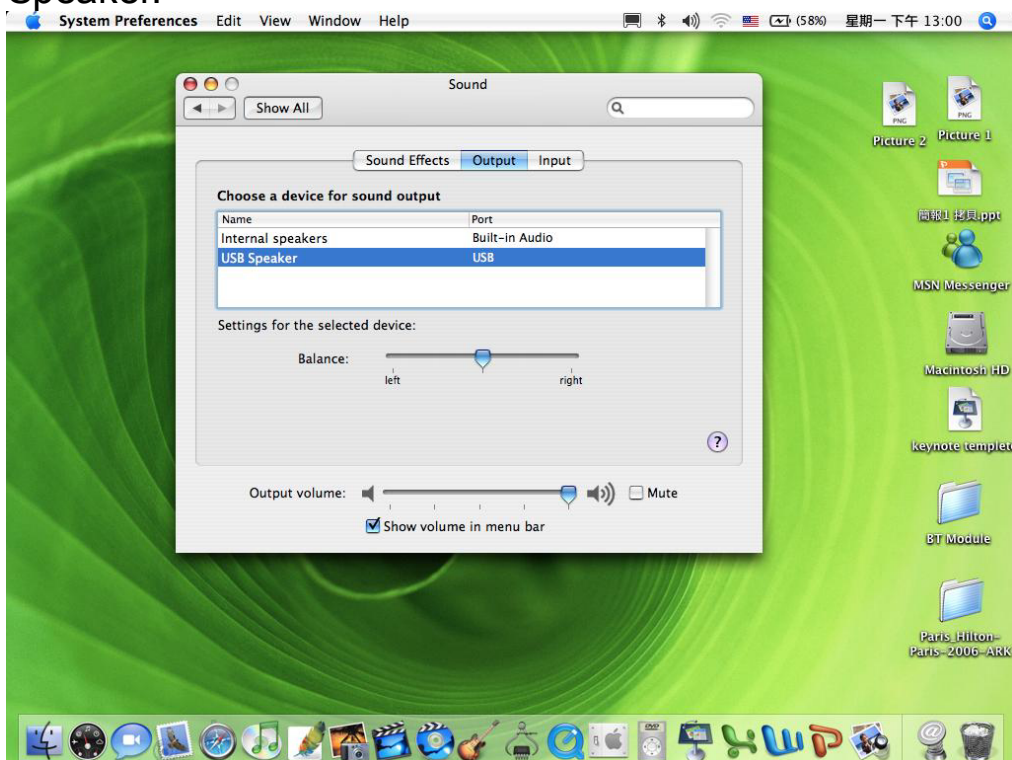
- Click and Enter **System Preferences** under **START**



→ Click and Enter **Sound** under **Hardware** section



→ Check whether the USB Speaker sets as the sound output default device. If not, please change the default device to USB Speaker.



- 2) On your PC or Mac, open a playlist in your favorite media player and press play.
- 3) Enjoy the music!!

4. Connect the Line IN device (mp3 player, CD player, or iPod) to the Music Receive Box and listen it with your speaker system
 - 1) Make sure you run Step 1 to Step 3.
 - 2) Take 3.5mm Phone Plug to 3.5mm Phone Plug Cable (H) and plug the end of 3.5mm phone plug into the jack on the Music Receive Box where it shows LINE IN.
 - 3) Plug the other end to your Line IN device.
 - 4) On your Line IN device, press play and enjoy the music!!
- *Warning: Music from USB Transmit Dongle is set as priority. Whenever the Music Receive Box is linking with USB Transmit Dongle, music from Line IN device will be cutoff automatically.

5. Product Operation

Music Receive Box

Function	Instruction	LED State
Power On	1) plug in power adapter 2) install the AA batteries	Solid Green (disconnecting with USB Transmit Dongle or connecting with Line IN Device)
Link Connected with USB Transmit Dongle	Follow Step 1 to Step 3	Blinking Green
Manually Power Switch	Push and Hold power button for 2 seconds	Green on when power on Green off when power off
Manually Music Output Switch	Push power button to switch music in-between Music Receive Box Line IN Device	Solid Green (connecting with Line IN Device) Blinking Green (connecting with Music Receive Box)
Low Battery Power Detector	When battery power is lower than 2.4V	Blinking Red flashes once in every 2 seconds

USB Transmit Dongle

Function	Instruction	LED State
Power On	Plug dongle to USB port	Solid Blue
Link Connected	Follow Step 1 to Step 3	Blinking Blue

with Music Receive Box		
---------------------------	--	--

6. Troubleshooting

Q) The Music Receive Box or USB Transmit Dongle will not turn on.

A-1) Make sure the USB Transmit Dongle is completely plugged into the USB port. If you are using the desktop stand, make sure that the stand's USB cable is completely plugged in as well.

A-2) Make sure that the power adapter and USB cable is plugged into the back of the Music Receive Box.

A-3) If the Music Receive Box and USB Transmit Dongle still will not turn on, unplug and re-plug it back in.

Q) The Music Receive Box and USB Transmit Dongle are on, but will not connect to each other.

A-1) Make sure the LED is blinking Green on Music Receive Box and blinking Blue on USB Transmit Dongle.

A-2) Unplug and re-plug the USB Transmit Dongle to USB port

Q) The Music Receive Box and USB Transmit Dongle are connected, but no music is coming through the speakers.

A-1) Make sure the media player on your PC is actively playing music.

A-2) Your PC or Mac has several different volume controls. Check the followings:

For PC

a. Go to the Control Panel. Select "Sounds and Audio Devices". On the "Volume" tab, select "Advanced". Make sure that the "Wave" level is all the way up.

b. On the same page, make sure that the system volume (labeled "Volume Control") is at least half-way up.

For Mac

a. Go to the System Preferences. Select "Sounds" in Hardware section. On the "Output volume", make sure that the "Wave" level is all the way up.

A-3) Many media players also have their own volume control within the player. Make sure that the media player's volume level is at least half-way up.

A-4) Make sure the volume level on your speakers (or your home stereo) is at least half-way up.

Q) I press play in my media player, but the music is still coming out of my PC speakers.

A) Make sure you run the Step 3-1 above by setting USB Speaker as the Audio Default Device

Certification:

1) FCC:

TSGD-2401, TSGC-2401 FCC ID: PTITSGD -2401

TSFX-2401 FCC ID : PTITSFX-2401

2) CE:

