



PRECISION GPS+: HiPer+

 TOPCON



HiPer+ 

Operator's Manual





HiPer+ Operator's Manual

Part Number 7010-0526

Rev A

**©Copyright Topcon Positioning Systems, Inc.
April, 2003**

All contents in this manual are copyrighted by Topcon. All rights reserved. The information contained herein may not be used, accessed, copied, stored, displayed, sold, modified, published, or distributed, or otherwise reproduced without express written consent from Topcon.

Table of Contents

Preface	xi
Terms and Conditions	xi
Regulatory Information	xiv
Manual Conventions	xvi
Chapter 1	
Introduction	1-1
Overview	1-1
Principles of Operation	1-2
GPS Overview	1-2
Calculating Positions	1-3
GPS Positioning	1-4
Conclusion	1-5
Receiver Overview	1-5
Standard Package Contents	1-7
Cables	1-7
Software	1-8
Literature	1-9
Getting Acquainted	1-9
Internal Components	1-10
GPS+ antenna	1-10
Bluetooth Module	1-10
Radio Modem	1-10
Power Board	1-12
GPS+ receiver board	1-12
Batteries	1-13
External Components	1-14
Radome	1-14

Bottom Panel 1-14
 Front Panel 1-15
 Back Panel 1-16
 Option Authorized File (OAF) 1-17

Chapter 2

Configuration 2-1

Powering the HiPer+ 2-2
 Internal batteries 2-2
 External Batteries 2-3
 Battery Charger 2-4
 Turning On/Off the HiPer+ 2-4
 Connecting the HiPer+ and a Computer 2-5
 Establishing a Wireless Connection 2-5
 Establishing an RS232 Cable Connection 2-7
 Establishing a USB Cable Connection 2-7
 Establishing a PC-CDU Connection 2-7
 HiPer+ Configuration 2-10
 Power Management 2-15
 Charging Internal Batteries 2-21
 Checking Internal Battery Status 2-22
 MINTER Configuration 2-22
 Radio Configuration 2-30
 Configuring a UHF Radio Modem 2-30
 Configuring a GSM Radio Modem 2-40
 Bluetooth Module Configuration 2-43
 Collecting Almanacs 2-49

Chapter 3

Setup and Survey 3-1

HiPer+ Receiver Setup 3-1
 Set up HiPer+ Receiver 3-2
 Measure Antenna Height 3-2
 Collect Data 3-4
 Surveying with the HiPer+ 3-5

Static Survey	3-5
Kinematic Survey	3-9
Stop and Go Survey	3-9
Kinematic Continuous	3-11
Real-time Kinematic Survey	3-12
Setting up an RTK Base Station	3-12
Setting up an RTK Rover	3-17

Chapter 4

Operation	4-1
Using the MINTER	4-1
Power Key	4-2
Status LED	4-2
Reset Key	4-2
FN Key and Record LED	4-2
Battery LED	4-6
Modem LED	4-6
Information Modes	4-7
Normal	4-7
Extended Information Mode (EIM)	4-7
Downloading Files to a Computer	4-8
Deleting Files	4-12
Checking an OAF	4-14
Loading an OAF	4-17
Managing HiPer+ Memory	4-18
Clearing the NVRAM	4-18
Using MINTER to Clear NVRAM	4-19
Using PC-CDU to Clear NVRAM	4-19
Changing Receiver Modes	4-20
Sleep Mode	4-20
Zero Power Mode	4-20
Checking Firmware Version	4-21
Loading New Firmware	4-23
Receiver and Power Board Firmware	4-24
Bluetooth Module Firmware	4-27

Chapter 5

Troubleshooting 5-1
 Power Problems 5-2
 Receiver Problems 5-3
 Bluetooth Problems 5-9

Appendix A

Creating Scripts A-1

Appendix B

Specifications B-1
 HiPer+ Specifications B-1
 Connector Specifications B-10
 Radio (Modem) RF Connector B-10
 Power Connector B-11
 Serial C-RS232 Connector B-12
 USB Connector B-13

Appendix C

Safety Warnings C-1
 General Warnings C-1
 Internal Battery Pack Warnings C-2
 Usage Warnings C-3

Appendix D

UHF Radio Usage D-1

Appendix E

Warranty Terms E-1

Index

List of Figures

Chapter 1

Introduction	1-1
HiPer+ Receiver	1-1
HiPer+ Radome	1-14
HiPer+ Front Panel	1-15
HiPer+ Back Panel	1-16

Chapter 2

Configuration	2-1
PC-CDU Main Screen	2-8
Click File->Connect	2-8
Bluetooth and RS232 Connection Parameters	2-9
USB Connection Parameters	2-9
PC-CDU Connection Established	2-10
Configuration->Receiver	2-11
Receiver Configuration	2-11
Receiver Configuration – MINTER Tab	2-12
Receiver Configuration – Advanced Tab	2-13
Advanced Configuration – Multipath Reduction	2-13
Advanced Configuration – Loop Management	2-14
Click Disconnect then Exit	2-14
Configuration->Receiver	2-15
Select Power Mode	2-16
Select Charger Mode	2-17
Select Power Output Modes – Ports	2-18
Select Power Output Modes – Slots	2-19
View Voltages Information	2-19
Enable and Apply Power Settings	2-20

HiPer+ MINTER	2-22
Connection Parameters – MINTER Settings	2-24
Configuration->Receiver	2-24
Receiver Configuration – MINTER Tab	2-25
File->Manual Mode	2-31
Manual Mode – Command Responses	2-32
PDL Radio Configuration Main Screen	2-33
PDL Top Left Corner Icon Menu	2-33
Set Capture Method->Soft Break	2-34
Click Load	2-34
PDL Identification Tab	2-35
PDL Radio Link Tab	2-36
PDL Serial Interface Tab	2-37
PDL – Click Program	2-37
Click Close then Exit	2-38
Connection Parameters – Manual Mode Only	2-38
Manual Mode Command Responses	2-39
Select a Survey Configuration	2-41
Base or Rover Radio Configuration	2-42
Set Base or Rover Cell Phone Parameters	2-42
Bluetooth Module Configuration Main Screen	2-44
Select Communication Port and Click Connect	2-45
BTCONF Identification Tab	2-46
BTCONF Parameters Tab	2-46
BTCONF Security Parameters	2-47
BTCONF Serial Interface Tab	2-48
Click Disconnect then Exit	2-48

Chapter 3

Setup and Survey 3-1

HiPer+ Antenna Offsets	3-3
Configuration->Receiver->MINTER	3-7
Advanced->Multipath	3-8
Advanced->Loop Management	3-8
Rover MINTER Configuration	3-9

Legacy-E Base Station Setup	3-13
Set All Parameters to Defaults	3-14
Receiver Configuration – Positioning	3-14
Base Tab Configuration	3-15
Base Configuration – Ports	3-16
HiPer+ Rover Station Setup	3-18
Rover Tab Configuration	3-19
Rover Configuration – Ports	3-21
PC-CDU Main Screen	3-21

Chapter 4

Operation	4-1
MINTER	4-1
Connection Parameters – RTS/CTS Handshaking	4-9
File->File Manager	4-9
Find Files to Download	4-10
Download Files	4-11
Download Files – Status Indicators	4-11
Click Disconnect then Exit	4-12
Connection Parameters – RTS/CTS Handshaking	4-12
File->Manager	4-13
Delete Files	4-13
Click Disconnect then Exit	4-14
Tools->Receiver Options	4-14
Option Manager	4-16
Load OAF	4-17
Tools->Clear NVRAM	4-19
Help->About	4-22
About PC-CDU	4-22
FLoader Main Screen	4-23
Get Device Type	4-24
Program Tab Settings	4-25
Set Device Type	4-25
Program Tab Settings	4-26
Get Device Type	4-27

Program Tab Settings 4-28
Bluetooth Firmware Load Complete 4-28

Appendix B

Specifications B-1

Power Connector B-11
RS232 Connector B-12
USB Connector B-13

List of Tables

Chapter 1

Introduction	1-1
Euro Card Options	1-13

Chapter 2

Configuration	2-1
Data Recording Parameter Behavior	2-29

Chapter 3

Setup and Survey	3-1
HiPer+ Antenna Offset Measurements	3-3

Chapter 4

Operation	4-1
FN Key Functions and REC LED Status	4-4
Signal-to-Noise (S/N) “Good” Ratios	4-7

Appendix A

Creating Scripts	A-1
Script Commands	A-2

Appendix B

Specifications	B-1
HiPer+ Specifications	B-1
Pacific Crest PDL (UHF) Modem Connector Specifications	B-10

Spread Spectrum/GSM Modem	
Connector Specifications	B-10
Power Connector Specifications	B-11
RS232 Connector Specifications	B-12
USB Connector Specifications	B-13

Preface

Thank you for purchasing this Topcon product. The materials available in this Manual (the “Manual”) have been prepared by Topcon Positioning Systems, Inc. (“TPS”) for owners of Topcon products. It is designed to assist owners with the use of the HiPer+ and its use is subject to these terms and conditions (the “Terms and Conditions”).



NOTICE

Please read these Terms and Conditions carefully.

Terms and Conditions

PROFESSIONAL USE – This product is designed to be used by a professional. The user is required to be a professional surveyor or have a good knowledge of surveying, in order to understand the user and safety instructions, before operating, inspecting or adjusting. Always wear required safety attire (safety shoes, hard hat, etc.) when operating.

COPYRIGHT – All information contained in this Manual is the intellectual property of, and copyrighted material of TPS. All rights are reserved. You may not use, access, copy, store, display, create derivative works of, sell, modify, publish, distribute, or allow any third party access to, any graphics, content, information or data in this Manual without TPS’ express written consent and may only use such information for the care and operation of your HiPer+. The information and data in this Manual are a valuable asset of TPS and are developed by the

expenditure of considerable work, time and money, and are the result of original selection, coordination and arrangement by TPS.

TRADEMARKS – Legacy-E™, LegAnt™, HiPer+™, Topcon® and Topcon Positioning Systems™ are trademarks of TPS. Windows® is a registered trademark of Microsoft Corporation. Bluetooth™ is a trademark owned by Bluetooth SIG, Inc. and is used by Topcon Positioning Systems, Inc. under license. Other product and company names mentioned herein may be trademarks of their respective owners.

DISCLAIMER OF WARRANTY – EXCEPT FOR ANY WARRANTIES IN APPENDIX D OR A WARRANTY CARD ACCOMPANYING THE PRODUCT, THIS MANUAL AND THE HIPER+ ARE PROVIDED “AS-IS.” THERE ARE NO OTHER WARRANTIES. TPS DISCLAIMS ANY IMPLIED WARRANTY OF MERCHANTABILITY OR FITNESS FOR ANY PARTICULAR USE OR PURPOSE. TPS AND ITS DISTRIBUTORS SHALL NOT BE LIABLE FOR TECHNICAL OR EDITORIAL ERRORS OR OMISSIONS CONTAINED HEREIN; NOR FOR INCIDENTAL OR CONSEQUENTIAL DAMAGES RESULTING FROM THE FURNISHING, PERFORMANCE OR USE OF THIS MATERIAL OR THE HIPER+. SUCH DISCLAIMED DAMAGES INCLUDE BUT ARE NOT LIMITED TO LOSS OF TIME, LOSS OR DESTRUCTION OF DATA, LOSS OF PROFIT, SAVINGS OR REVENUE, OR LOSS OF THE PRODUCT’S USE. IN ADDITION TPS IS NOT RESPONSIBLE OR LIABLE FOR DAMAGES OR COSTS INCURRED IN CONNECTION WITH OBTAINING SUBSTITUTE PRODUCTS OR SOFTWARE, CLAIMS BY OTHERS, INCONVENIENCE, OR ANY OTHER COSTS. IN ANY EVENT, TPS SHALL HAVE NO LIABILITY FOR DAMAGES OR OTHERWISE TO YOU OR ANY OTHER

PERSON OR ENTITY IN EXCESS OF THE PURCHASE PRICE FOR THE HIPER+.

LICENSE AGREEMENT – Use of any computer programs or software supplied by TPS or downloaded from a TPS website (the “Software”) in connection with the HiPer+ constitutes acceptance of these Terms and Conditions in this Manual and an agreement to abide by these Terms and Conditions. The user is granted a personal, non-exclusive, non-transferable license to use such Software under the terms stated herein and in any case only with a single HiPer+ or single computer. You may not assign or transfer the Software or this license without the express written consent of TPS. This license is effective until terminated. You may terminate the license at any time by destroying the Software and Manual. TPS may terminate the license if you fail to comply with any of the Terms or Conditions. You agree to destroy the Software and manual upon termination of your use of the HiPer+. All ownership, copyright and other intellectual property rights in and to the Software belong to TPS. If these license terms are not acceptable, return any unused software and manual.

CONFIDENTIALITY – This Manual, its contents and the Software (collectively, the “Confidential Information”) are the confidential and proprietary information of TPS. You agree to treat TPS’ Confidential Information with a degree of care no less stringent than the degree of care you would use in safeguarding your own most valuable trade secrets. Nothing in this paragraph shall restrict you from disclosing Confidential Information to your employees as may be necessary or appropriate to operate or care for the HiPer+. Such employees must also keep the Confidentiality Information confidential. In the event you become legally compelled to disclose any of the Confidential Information, you shall give TPS immediate notice so that it may seek a protective order or other appropriate remedy.

WEBSITE; OTHER STATEMENTS – No statement contained at the TPS website (or any other website) or in any other advertisements or TPS literature or made by an employee or independent contractor of TPS modifies these Terms and Conditions (including the Software license, warranty and limitation of liability).

SAFETY – Improper use of the HiPer+ can lead to injury to persons or property and/or malfunction of the product. The HiPer+ should only be repaired by authorized TPS warranty service centers. Users should review and heed the safety warnings in Appendix C.

MISCELLANEOUS – The above Terms and Conditions may be amended, modified, superseded, or canceled, at any time by TPS. The above Terms and Conditions will be governed by, and construed in accordance with, the laws of the State of California, without reference to conflict of laws.

Regulatory Information

The following sections provide information on this product's compliance with government regulations.

FCC Class B Compliance

This device complies with Part 15 of the FCC rules. Operation is subject to the following two conditions:

1. This device may not cause harmful interference, and
2. This device must accept any interference received, including interference that may cause undesired operation.

This equipment has been tested and found to comply with the limits for a Class B digital device, pursuant to Part 15 of the FCC rules. These limits are designed to provide reasonable protection against harmful interference in residential

installations. This equipment generates, uses, and can radiate radio frequency energy, and if not installed and used in accordance with the instructions, may cause harmful interference to radio communications. However, there is no guarantee that interference will not occur in a particular installation.

If this equipment does cause interference to radio or television equipment reception, which can be determined by turning the equipment off and on, the user is encouraged to try to correct the interference by on or more of the following measures:

- Reorient or relocate the receiving antenna.
- Move the equipment away from the receiver.
- Plug the equipment into an outlet on a circuit different from that to which the receiver is powered.
- Consult the dealer or an experienced radio/television technician for additional suggestions.



CAUTION

Any changes or modifications to the equipment not expressly approved by the party responsible for compliance could void your authority to operate such equipment.

Canadian Emissions Labeling Requirements

This Class B digital apparatus meets all requirements of the Canadian Interference-Causing Equipment Regulations.

Cet appareil numérique de la classe B respecte toutes les exigences du Règlement sur le matériel brouilleur du Canada.

Manual Conventions

This manual uses the following conventions:

Example	Description
File->Exit	Click the File menu and click Exit .
Enter	Press or click the button or key labeled Enter .
OR	Alternate procedure for this step.
AND	Follow this step, but include this information, enable this function, or change this property.



TIP

Supplementary information that can help you configure, maintain, or set up a system.



NOTICE

Supplementary information that can have an affect on system operation, system performance, measurements, or personal safety.



CAUTION

Notification that an action has the potential to adversely affect system operation, system performance, data integrity, or personal health.



WARNING

Notification that an action *will* result in system damage, loss of data, loss of warranty, or personal injury.



DANGER

UNDER NO CIRCUMSTANCES SHOULD THIS ACTION BE PERFORMED.

Notes:

Introduction

This chapter describes:

- The HiPer+ (Figure 1-1)
- GPS/GLONASS and your receiver
- Common HiPer+ functions
- Standard package contents and configurations
- HiPer+ components
- The Option Authorized File (OAF)



Figure 1-1. HiPer+ Receiver

Overview

Topcon Positioning System's HiPer+ is a dual-frequency, GPS+ receiver built to be the most advanced and compact receiver for the surveying market. The HiPer+ is a multi-function, multi-purpose receiver intended for precision markets. Precision markets means markets for equipment, subsystems, components

and software for surveying, construction, commercial mapping, civil engineering, precision agriculture and land-based construction and agriculture machine control, photogrammetry mapping, hydrographic and any use reasonably related to the foregoing.

The HiPer+ can receive and process both L1 and L2 signals, improving the accuracy of your survey points and positions. The GPS+ component of HiPer+ receivers means you can access both the GPS (Global Positioning System) satellites of the United States, and the GLONASS (Global Navigation Satellite System) satellites of the Russian Federation, increasing the number of satellites your receiver can detect, thus improving the accuracy of your survey points, increasing productivity, and reducing cost.

The dual-frequency and GPS+ features of the HiPer+ combine to provide the only real time kinematic (RTK) system accurate for short and long baselines. Several other features, including multipath mitigation and co-op tracking, provide under-canopy and low signal strength reception. The HiPer+ receiver provides the functionality, accuracy, availability, and integrity needed for fast and easy data collection.

Principles of Operation

Surveying with the right GPS receiver can provide users accurate and precise positioning, a requirement for any surveying project.

This section gives an overview of GPS and receiver functions to help you understand and apply GPS principles, allowing you to get the most out of your receiver.

GPS Overview

The Global Positioning System (GPS), run by the United States Department of Defense (DoD), is a network of up to 28 satellites (at time of printing) orbiting the earth every 12 hours. The Global Navigation Satellite System (GLONASS), is the Russian Federation Ministry of Defense counterpart to

GPS. At any one time, with a standard 15 degree angle, up to 10 or 12 GPS satellites are visible from any point on earth. When a receiver can also track GLONASS satellites, between 10 and 16 satellites are visible.

The GPS and GLONASS network has three components:

- Space – GPS and GLONASS satellites orbiting approximately 12,000 nautical miles above Earth and are equipped with a clock and radio. These satellites broadcast digital information (ephemerides, almanacs, time frequency corrections, etc.).
- User – The community and military that use GPS/GLONASS receivers and the corresponding satellites to calculate positions.
- Control – Ground stations located around the Earth that upload data, including clock corrections and new ephemerides (satellite positions as a function of time), to ensure the satellites transmit data properly.

GPS receivers use ephemeris and almanac data to calculate accurate positions, and the positions of your survey points.

Calculating Positions

Once the receiver locks on to a satellite, it starts recording measurements and receiving the various digital information (ephemeris, almanac, and so on) the satellites broadcast. To calculate a position, receivers use the following basic formula:

$$\text{Velocity} \times \text{Time} = \text{Distance}$$

Where Velocity is the speed at which radio waves travel (i.e., the speed of light) and Time is the difference between the signal transmission time and signal reception time.

To calculate absolute 3-D positions—latitude, longitude, altitude—the receiver must lock on to four satellites. In a

mixed, GPS and GLONASS scenario, receiver's must lock onto at least five satellites to obtain an absolute position.

To provide fault tolerance using only GPS or only GLONASS, the receiver must lock onto a fifth satellite. Six satellites will provide fault tolerance in mixed scenarios. Usually, the number of GPS and GLONASS satellites in view does not exceed twenty (20).

Once locked on to a satellite, the receiver collects ephemerides and almanacs, saving this information to its NVRAM (Non-Volatile RAM).

- GPS and GLONASS satellites broadcast ephemeris data cyclically, with a period of 30 seconds.
- GPS satellites broadcast almanac data cyclically with a period of 12.5 minutes; GLONASS satellites broadcast almanac data cyclically with a period of 2.5 minutes.

GPS Positioning

Calculating an accurate position requires the following three elements:

- Accuracy – The accuracy of a position depends upon the number, signal integrity, and placement (also known as Dilution of Precision, or DOP) of satellites.
 - Differential GPS (DGPS) strongly mitigates atmospheric and orbital errors, and counteracts anti-spoofing signals the US Department of Defense transmits with GPS signals.
 - The more satellites in view, the stronger the signal, the lower the DOP number, providing more accurate positioning.
- Availability – The availability of satellites affects the calculation of valid positions. The more visible

satellites available, the more valid and accurate the position. Natural and man-made objects can block, interrupt, and weaken signals, lowering the number of available satellites.

- Integrity – Fault tolerance allows a position to have greater integrity, increasing accuracy. Several factors combine to provide fault tolerance, including:
 - Receiver Autonomous Integrity Monitoring (RAIM) detects faulty GPS and GLONASS satellites and removes them from the position calculation.
 - Wide Area Augmentation System (WAAS) creates and transmits DGPS correction messages.
 - Five or more visible satellites for only GPS or only GLONASS; six or more satellites for mixed scenarios.
 - Current ephemerides and almanacs.
 - Several algorithms to detect and correct faulty information.

Conclusion

Surveyors can use Topcon GPS+ receivers to collect data from a network of satellites and control stations to triangulate precise points anywhere on Earth.

This overview simply outlines the basics of GPS and GLONASS positioning. For more detailed information, visit the TPS website (www.topconps.com/gpstutorial/).

Receiver Overview

When power is turned on and the receiver self-test completes, the receiver's 40 channels initialize and begin tracking visible GPS and GLONASS satellites. Each of the receiver's channels can be used to track C/A-L1, P-L1, or P-L2 signals. The number of channels available allows the

receiver to track simultaneously all visible GPS and GLONASS satellites at any time and location. The combination GPS and GLONASS (GPS+) antenna receives the different signals for processing.

An internal GPS+ antenna equipped with an optional low noise amplifier (LNA) and the receiver's radio frequency (RF) device are connected with a coaxial cable. The wide-band signal received is down-converted, filtered, digitized, and assigned to different channels. The receiver processor controls the process of signal tracking.

Once the signal is locked in the channel, it is demodulated and necessary signal parameters (carrier and code phases) are measured. Also, broadcast navigation data are retrieved from the navigation frame.

After the receiver locks on to four or more satellites, it is possible to solve the so-called "absolute positioning problem" and compute the receiver's coordinates and time (in WGS-84). All this information is stored in the receiver's memory, which can be downloaded later onto a computer and processed using a post-processing software package. When the receiver is run in RTK mode, raw data measurements can also be recorded into the receiver's internal memory. This allows the operator to double check real-time results obtained in the field.

Capabilities of the HiPer+ receiver include:

- Co-Op Tracking
- Multipath reduction
- Wide area augmentation system (WAAS)
- Adjustable phase locked loop (PLL) and delay lock loop (DLL) parameters
- Dual-frequency static, kinematic, real-time kinematic (RTK), and differential GPS (DGPS) survey modes

- Auto data logging
- Setting different mask angles
- Setting different survey parameters
- Static or dynamic modes

Standard Package Contents

The HiPer+ comes in a typical real-time kinematic (RTK) package with a Legacy-E as the Base Station and the HiPer+ as the Rover (also, refer to the re-packaging instruction card). The contents of this package include:

- HiPer+
- Legacy-E GPS receiver
- LegAnt-2 flat ground plane antenna
- UHF Base radio kit
- LitePole
- Tripod, tribrach, and adapter
- Pinnacle or Topcon Tools software
- Cables and cords
- Literature

Cables

Standard package cables include:

- Receiver-to-computer RS232 serial cable
- Receiver-to-SAE power cable
- SAE-to-SAE cable extension
- Alligator clips-to-SAE cable
- Power/charger cable
- Power supply W/48" SAFECO connector

Software

Standard HiPer+ software includes:

- PC-CDU – controller software that can run on a Windows®-based computer. Please refer to the *PC-CDU User's Manual* for detailed information on this software.
- GPS radio configuration software – third party software, such as PDLCONF from Pacific Crest.
- Topcon Tools – Topcon's post-processing software.

Software and software information are also available on the Topcon website (www.topcongps.com/software/index.html or <http://www.topcongps.com/software/3rdparty.html>).

The following software will also be useful for operating, caring for and using your HiPer+ receiver, and may be required for some applications.

- FLoader – Topcon's firmware loader; available on the Topcon website.
- PDLCONF from Pacific Crest – radio configuration program included with Base station package; firmware upgrades available from the Pacific Crest website (www.paccrst.com/download/upgrade.htm).
- BTCONF – Topcon's Bluetooth module configuration program; available on the Topcon website.
- TopSURV – Topcon's field data collection software; among many other functions, can be used to configure the radio/modem.
- Survey Pro GPS – optional third-party software for data collection and display; contact your TPS dealer.
- Carlson SurvCE – optional third-party software for data collection; contact your TPS dealer.

Literature

HiPer+ literature includes:

- One year warranty card
- *HiPer+ Operator's Manual*
- Functional specifications
- Packaging instruction card

Manuals and other product information are also available on the Topcon website—www.topcongps.com/hardware/index.html (then click on the appropriate product).

The following manuals will also be useful for operating and caring for your HiPer+ receiver. These are available on the Topcon website (www.topcongps.com/support/manuals.html).

- *PC-CDU User's Manual*
- *FLoader User's Manual*
- *MINTER User's Manual*

Getting Acquainted

The HiPer+ is 158.5mm wide, 173mm deep, 113mm high, and weighs 1.72kg. The receiver's advanced design allows users to reduce the number of cables required for receiver operation, allowing the user to perform jobs more reliably and efficiently, especially when the receiver is moving.

The HiPer+ is also versatile and can be configured in several different ways. The casing allocates space for two nonremovable, on-board Li-Ion batteries, a Bluetooth™¹ wireless technology module, and two Euro cards. One of those cards is the GPS+

1. Bluetooth is a trademark owned by Bluetooth SIG, Inc. and is used by Topcon Positioning Systems, Inc. under license.

receiver and the other is used for communications (modem, spread spectrum, GSM, or DGPS).

The HiPer+ has standard interior receiver components and two end panels for user interface, communication, and power supply. For HiPer+ specifications, see Appendix B.

Internal Components

Features inside the HiPer+ include:

GPS+ antenna

An internal, micro-strip antenna capable of receiving GPS L1/L2 and GLONASS L1/L2 signals.

Bluetooth Module

A combination of software and hardware technology that makes the HiPer+ a mobile, wireless, GPS+ receiver that supports a point-to-point serial profile. As such, the HiPer+ can transfer and synchronize files between the receiver and any other Bluetooth wireless technology device that supports serial profile, including portable handheld devices and external controllers, PC-USB/RS adapters, mobile computers and phones, IPAQs, PCMCA-to-Bluetooth adapters, etc.

With Bluetooth wireless technology, the HiPer+ reception and transmission distance is 10 meters (32 feet) for interior projects and 30–50 meters (98–164 feet) for exterior projects.

The Bluetooth module's processor and firmware are independent of the receiver card and power board.

Radio Modem

The HiPer+ incorporates an internal modem for receiving data from a Base station. The Base station's modem transmits the carrier phase and code measurements along

with the reference station information (i.e., location and description) to the rover modem.

Your HiPer+ may be equipped with one of the following communication boards (however, your receiver may also be configured without a radio/modem):

- UHF modem – a Pacific Crest PDL (Positioning Data Link) modem; either a 450–470 MHz or 430–450 MHz; receiving only.
- Spread Spectrum – either a 915 MHz or 2.4 GHz modem.
- GSM – dual-band, dual-user cell phone frequency modem (Europe and Japan: 900/1800 MHz; USA and Canada: 900/1900 MHz).
- Broadcast data receiver – a TPS-BDR communication board for receiving differential corrections from DGPS radio beacons and geostationary L-band satellites broadcasting OmniStar® data.

The Base station operator is responsible for complying with local regulations for radio operation. In the US, the FCC regulates the use of radio transmitters, requiring a license. Broadcasting without a license can result in severe penalties including the confiscation of your radio and GPS+ equipment. Please call TPS Customer Support if you need advice on obtaining the proper license in the USA.

The internal PDL radio modem comes with a number of preset frequencies programmed at TPS.



WARNING

The use of these preset frequencies without a license is illegal. Contact your local

authorities (the FCC in the US) to use these preset frequencies.

Once the FCC, or your local authority issues, the proper licenses, your TPS dealer will program your PDL radios (Base and Rover) to enable communications.

Complete information regarding your radio system can also be found in the Pacific Crest radio manuals.

Power Board

The internal power board manages receiver power and battery charging, and is connected to the receiver board and the batteries. The power board receives power from the internal batteries, even when the receiver is turned off. This feature allows the internal batteries to charge, regardless of the receiver's status (on or off). To prevent the batteries from discharging when the receiver is stored, put the receiver in Zero Power Mode (see "Zero Power Mode" on page 4-20 for more information). The batteries will not charge in this mode.

The power board's processor and firmware are independent of the receiver card. To ensure firmware compatibility, the GPS receiver board and power board must be loaded with firmware from the same package.

GPS+ receiver board

The HiPer+ is supplied with a Euro-112 card capable of processing GPS L1/L2 and GLONASS L1/L2 signals.

Table 1-1 lists the options available for this card.

Table 1-1. Euro Card Options

Euro Card Model	Available Options
Euro-112 (HE_GGD)	G: GPS L1 GD: GPS L1/L2 GG: GPS/GLONASS L1 GGD: GPS/GLONASS L1/L2

A WAAS-enabled TPS receiver allows simultaneous tracking of two WAAS satellites. Each of the WAAS satellites is allocated its own channel.

Batteries

The HiPer+ receiver is equipped with two nonremovable, on-board, rechargeable Lithium-Ion battery packs connected to the receiver's power board. Each one of these Lithium-Ion battery packs is 7.4 V and 3 Ah, giving you a total power of 7.4 V, nominal, and 6 Ah when fully charged.

With a full charge, the internal batteries should power both the GPS receiver and the PDL radio modem for at least 11.5 working hours. If the internal radio modem is turned off, the GPS receiver should run at least 13.5 hours with fully charged on-board batteries.

The Li-Ion batteries used in the HiPer+ should run at no less than 98% capacity after 500 charging cycles. These batteries do not need to be drained before recharging.

A battery charger (AC adapter) is included with the standard package. See Appendix B for technical specifications on the battery.

External Components

The HiPer+ casing includes a connector for modem antenna attachment, a user interface, a power port, and ports for configuration.

Radome

Figure 1-2 shows the radome components.



Figure 1-2. HiPer+ Radome

- Internal antenna – Location of GPS/GLONASS internal antenna.
- Modem antenna connector – Modem antenna connector used for internal modem RF connection. This is a BNC female connector for Pacific Crest PDL (UHF) modems, or a TNC female connector for spread spectrum and GSM modems.

Bottom Panel

- Receiver serial number
- Receiver part number
- Antenna Reference Point (ARP)

Front Panel

Figure 1-3 shows the front panel components.

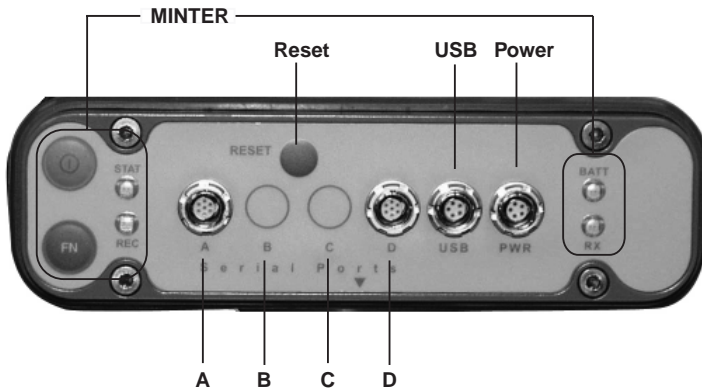


Figure 1-3. HiPer+ Front Panel

- **MINTER** – The Minimum INTERface for the HiPer+ receiver. The MINTER consists of two keys and four, three-color LEDs. See “Using the MINTER” on page 4-1 for descriptions and usages of the MINTER components.
- **Reset** – Pressing this key performs a hard reset for both the receiver board and the power board. Once this key is pressed, the controllers governing the receiver board, power board, and Bluetooth module reboot and the device restarts.

This key can be used to leave Zero Power Mode or if the receiver does not respond to commands. See “Using the MINTER” on page 4-1 for details.

- **Four serial ports:**
 - Port A used for communication between HiPer+ and a controller or any other external device.
 - Port B used internally to connect the receiver board with the Bluetooth module.

**NOTICE**

Changing the receiver's Port B default settings will affect the Bluetooth link. The default settings for Port B are: 115200 bps, 8 data bits, 1 stop bit, no parity, and no handshaking.

–Port C used internally to connect the modem and receiver boards.

–Port D used for communication between the receiver and an external device.

- PWR – The power input port to which an external power source (+6 to +28 V DC) is connected and where the unit is charged.
- USB – Used for high-speed data transfer and communication between the receiver and an external device.
- Slant height measure mark (SHMM)

Back Panel

Figure 1-4 shows the back panel components.

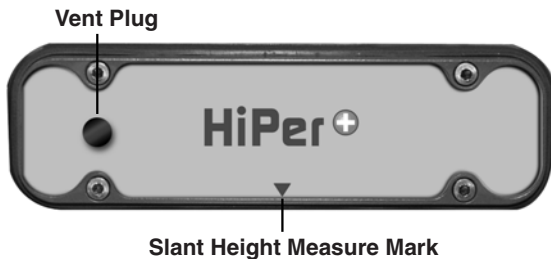


Figure 1-4. HiPer+ Back Panel

- Vent plug – Equalizes the pressure between the inside of the receiver and the outside environment.
- Slant height measure mark (SHMM)

Option Authorized File (OAF)

Topcon Positioning Systems issues an Option Authorized File (OAF) to enable the specific options that customers purchase. An Option Authorized File allows customers to customize and configure the HiPer+ according to particular needs, thus only purchasing those options needed.

Typically, all HiPer+ receivers ship with a temporary OAF that allows the receiver to be used for a predetermined period of time. When the receiver is purchased, a new OAF activates desired, purchased options permanently. Receiver options remain intact when clearing the NVRAM or resetting the receiver.

The OAF enables the following kinds of functions. For a complete list of available options and details, visit the TPS website (www.topcongps.com/tech/index) or consult your TPS dealer.

- Type of signal (standard L1; optional L2)
- Memory (standard 0MB; optional 1MB up to 96MB)
- Update rate standard 1Hz (optional 5, 10, or 20Hz)
- RTK at 1Hz, 5Hz, 10Hz, and 20Hz
- RTCM/CMR Input/Output
- Event marker
- Co-Op tracking
- Advanced multipath reduction
- Wide Area Augmentation System (WAAS)
- Receiver Autonomous Integrity Monitoring (RAIM)
- 1 PPS (Pulse-Per-Second; a timing signal)

Notes:

Configuration

This chapter describes:

- HiPer+ power supply
- Connecting the receiver and a computer
- HiPer+ configuration
- Minimum INTERface (MINTER) configuration
- Radio configuration
- Bluetooth module configuration
- Collecting almanacs

Before you can use your HiPer+ receiver, you need to:

1. Charge the batteries. See “Powering the HiPer+” on page 2-2.
2. Configure the various parts of your receiver. See:
 - “Connecting the HiPer+ and a Computer” on page 2-5,
 - “HiPer+ Configuration” on page 2-10,
 - “MINTER Configuration” on page 2-22,
 - “Radio Configuration” on page 2-30 (if applicable), and
 - “Bluetooth Module Configuration” on page 2-43.
3. Collect an almanac. See “Collecting Almanacs” on page 2-49.

Powering the HiPer+

You can power the HiPer+ using:

- Internal batteries
- External batteries
- A battery charger

Internal batteries

With a full charge, the HiPer+ internal batteries should power both the GPS receiver, the Bluetooth module, and the PDL radio modem for at least 11.5 working hours. If the internal radio modem is turned off, the HiPer+ GPS receiver should run at least 13.5 hours with fully charged on-board batteries.

1. Plug the power/charger cable into the power input port.
2. Plug the power/charger cable into an available outlet.



CAUTION

Use a grounded, main socket outlet.

3. Press the **Reset** key on the receiver. This will ensure that the receiver is in Normal mode for charging. The receiver will not charge in Zero Power Mode (see “Zero Power Mode” on page 4-20 for more information).
4. Leave overnight. A six-hour charge will charge the batteries about 90%. A seven-hour charge will fully charge the receiver. The internal batteries cannot be overcharged.

The speed of the charge depends on the Power and Charger settings on the PC-CDU Receiver Configuration screen, and whether the receiver is turned off or on. See “Power Management” on page 2-15 for more information on these settings.

The Li-Ion batteries used in the HiPer+ should run at no less than 98% capacity after 500 charging cycles. These batteries do not need to be drained before recharging.

External Batteries

In addition to the internal batteries, you can use your HiPer+ with external batteries. The use of external batteries allows you to continue using the receiver in case the internal batteries are discharged. To use external batteries, you must have:

- a 12 V, 2.3 A*h battery
- a 2.3 A*h battery clip-to-SAE cable
- an SAE-to-Power Plug cable



NOTICE

When the receiver uses external batteries, make sure that the charger mode is set to Off. Otherwise, the external batteries will also charge internal batteries, causing operation time to decrease. See “Power Management” on page 2-15 for more information on setting the charger mode.

1. Connect the two cables using the SAE connectors.
2. Plug the power cable into the HiPer+ power port.
3. Attach the battery clip to the battery. A single external 12 V, 2.3 A*h battery should run the HiPer+ for about 7 hours and the HiPer+ and modem for no less than 5 hours.

**TIP**

You can also use an SAE-to-SAE extension cable and an Alligator clip-to-SAE cable, and power your HiPer+ directly from a battery, such as the battery used to power your Base radio or similar battery.

Battery Charger

The same charger used to charge the internal batteries can be used as an external power supply for the HiPer+ receiver. The charger is provided with the receiver package.

1. Connect the battery charger to the power port on the HiPer+ front panel.
2. Plug the charger into a 110/220 V outlet. The power input for your battery charger should be AC between 90 and 264 V 1A (110 V AC) and between 47 Hz and 63 Hz. The battery charger outputs DC 12 V 2.5 A (30 W).

Turning On/Off the HiPer+

To turn On the receiver, press the green **power** key for about 0.5 seconds and release it.

**NOTICE**

If the receiver does not turn on, it may be in Zero Power Mode. See “Zero Power Mode” on page 4-20 for more information.

To turn Off the receiver, press the green **power** key for more than one and less than four seconds (until both the STAT and the REC LEDs turn off). This delay (about 1 second) will prevent the receiver from being turned off by mistake.

Connecting the HiPer+ and a Computer

To configure, manage files, or maintain the HiPer+, you need to connect the receiver and a computer using:

- The HiPer+, a Bluetooth-enabled external device (computer), and PC-CDU.

OR

- The HiPer+, an RS232 cable, a computer, and PC-CDU.

OR

- The HiPer+, a USB cable, a computer with the TPS USB driver installed, and PC-CDU.

Once you have established a connection between the receiver and the computer (whether through Bluetooth wireless technology, the RS232 cable, or the USB cable), you will be able to:

- Configure the receiver and its components
- Send commands to the receiver
- Download files from the receiver's memory
- Load new firmware, OAFs, and configuration files to a receiver

Establishing a Wireless Connection

The HiPer+ receiver contains Bluetooth wireless technology that allows file transfer and synchronization between the receiver and any other external device that supports Bluetooth wireless technology; for example, an IPAQ, or a computer with USB-to-Bluetooth adapter or PCMCIA-to-Bluetooth adapter installed.



NOTICE

Changing the receiver's Port B default settings will affect the Bluetooth link. The default

settings for Port B are: 115200 bps, 8 data bits, 1 stop bit, no parity, and no handshaking.

The HiPer+ and external device connection procedure varies slightly depending on the type of external device used. In general, the connection procedure is as follows:



NOTICE

Refer to your Bluetooth-enabled external device documentation for more detailed connection information.

1. Turn on a Bluetooth-enabled external device and your receiver. The default external device mode is Master; the receiver's Bluetooth module mode is Slave.
2. Instruct the external device (Master) to search for the receiver (Slave).
3. Once the Master device detects the receiver, use the procedure described in the external device's documentation to connect it with the receiver.
4. Once connected, continue with Step 1 in "Establishing a PC-CDU Connection" on page 2-7.

If you cannot establish a connection, check that the receiver's slot 3 is enabled.

1. Connect your receiver and a computer using an RS232 cable (see "Establishing an RS232 Cable Connection" on page 2-7).
2. Click **Configuration->Receiver->General**.
3. In the Turn on/off Slots area, ensure the Slot 3 (B) check box is enabled.

Establishing an RS232 Cable Connection

1. Using the RS232 cable, connect the serial port of your computer (usually COM1) to the receiver's serial port A.
2. Press the **power** buttons on the receiver and computer to turn them on.
3. Continue with Step 1 in "Establishing a PC-CDU Connection" on page 2-7.

Establishing a USB Cable Connection

Make sure you have installed Topcon's USB driver (available from <http://www.topcongps.com/software/updates.html>) before continuing.

1. Using the USB cable, connect the USB port on the receiver to a USB port on the computer.
2. Press the **power** buttons on the receiver and computer to turn them on.
3. Continue with Step 1 in "Establishing a PC-CDU Connection" on page 2-7.

Establishing a PC-CDU Connection

PC-CDU is a Personal Computer-Control Display Unit software used to manage the various functions of your receiver. The full range of PC-CDU configuration and function is outside the scope of this manual. For more information on any of the procedures in this section or on PC-CDU, refer to the *PC-CDU User's Manual* available on the TPS website.

1. Once the receiver and a computer are connected, start PC-CDU on your computer. The PC-CDU main screen displays (Figure 2-1).

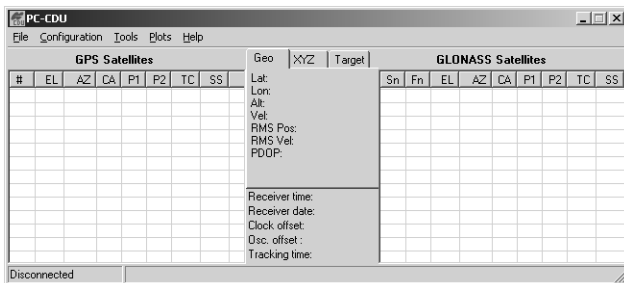


Figure 2-1. PC-CDU Main Screen

Notice that the lower-left hand corner shows the receiver status as “Disconnected”.

2. Click **File->Connect** (Figure 2-2).

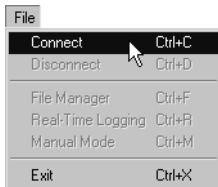


Figure 2-2. Click File->Connect

3. On the Connection Parameters dialog box, select the following parameters for Bluetooth or RS232 connections and click **Connect** (Figure 2-3 on page 2-9):
 - Set the Connection mode (Direct).
 - Set the port for your computer (typically COM1) from the Port drop-down list.
 - Set the communication rate between the receiver and the computer (usually 115200) from the Baud rate drop-down list.

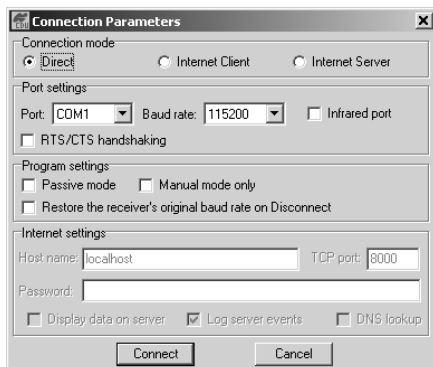


Figure 2-3. Bluetooth and RS232 Connection Parameters

OR

Select the following parameters for USB connections (Figure 2-4) and click **Connect**:

- Set the Connection mode (Direct).
- Set the port for your computer (USB) from the Port drop-down list.
- Select the receiver's ID from the Rec ID drop-down list.

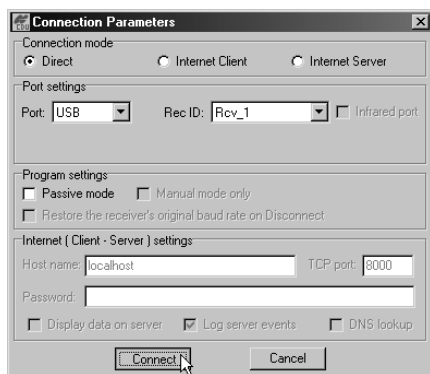


Figure 2-4. USB Connection Parameters

Once a PC-CDU connection with the receiver has been established, the current communications settings—such as, port name, baud rate (if applicable), and flow control (if applicable)—display in the lower-left corner of the main window of PC-CDU. A timer begins to count up in the lower-right corner as well (Figure 2-5).

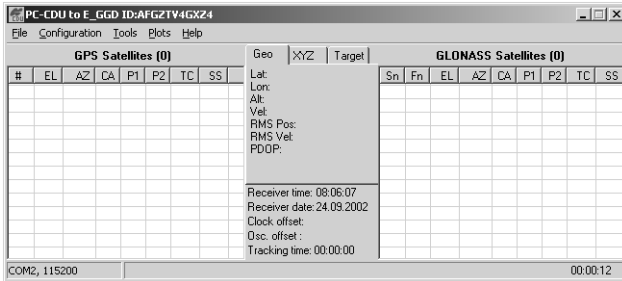


Figure 2-5. PC-CDU Connection Established

HiPer+ Configuration

You use PC-CDU to configure the various parts of the HiPer+ receiver. Any settings you make using PC-CDU will be saved in the receiver’s memory, and will be reflected when you use the MINTER. The full range of PC-CDU configuration and function is outside the scope of this manual.



Refer to the *PC-CDU User’s Manual* to manage all possible HiPer+ receiver configurations.

The following configuration is recommended for the most common applications. However, you can select configuration parameters as needed for your particular jobsite.



NOTICE

Click Apply after making any configuration change, otherwise your receiver will not accept the change.

1. Connect your receiver and computer. See “Connecting the HiPer+ and a Computer” on page 2-5 for this procedure.
2. Once connected, click on **Configuration->Receiver** (Figure 2-6).

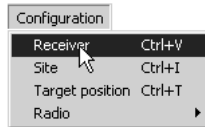


Figure 2-6. Configuration->Receiver

The Receiver Configuration dialog box displays (Figure 2-7).

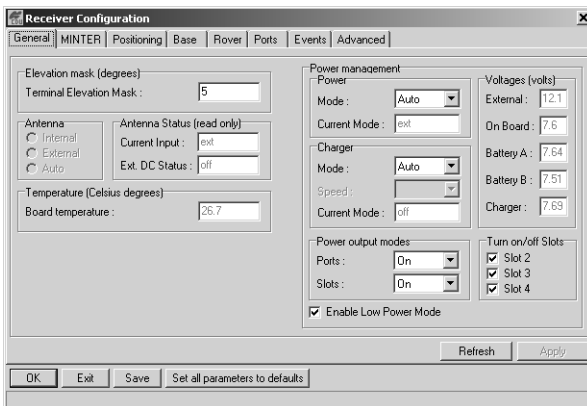


Figure 2-7. Receiver Configuration

3. Click the MINTER tab, configure the following settings, and click **Apply** (Figure 2-8 on page 2-12).
 - Set the Recording interval in seconds.
 - Set the Elevation mask for Log file in degrees.

- Enter the File name prefix. Use the last three digits of the receiver serial number. The receiver’s serial number and part number can be found on the bottom panel of the receiver.

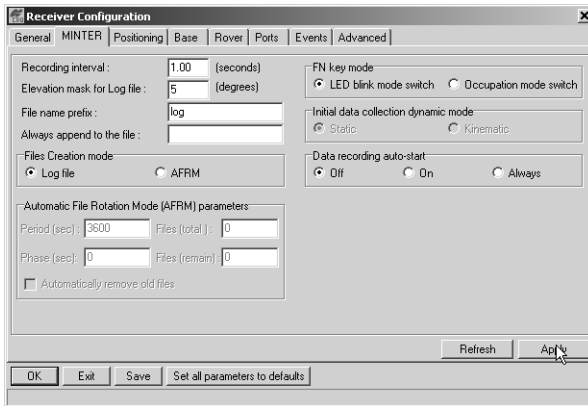


Figure 2-8. Receiver Configuration – MINTER Tab

If your jobsite is in an area that has obstructions (buildings, trees, etc.), and/or the antenna location is near reflective objects, configure the receiver to reduce errors from these sources.



WARNING

Do not make other changes without consulting the *PC-CDU User’s Manual*.

- Click the **Advanced** tab on the Receiver Configuration screen (Figure 2-9).

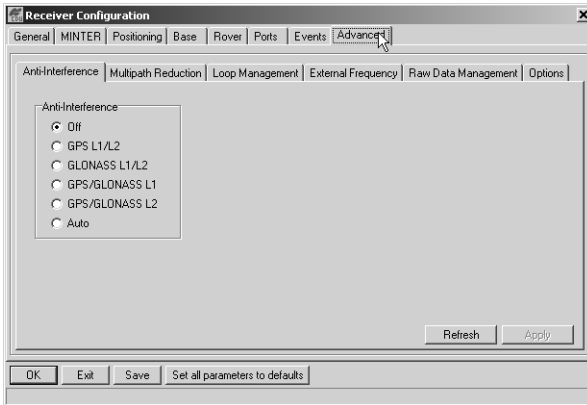


Figure 2-9. Receiver Configuration – Advanced Tab

- Click the **Multipath Reduction** tab, enable the following boxes, and click **Apply** (Figure 2-10).
 - Code multipath reduction
 - Carrier multipath reduction

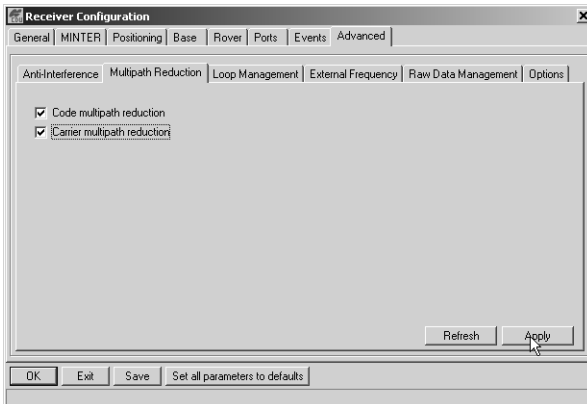


Figure 2-10. Advanced Configuration – Multipath Reduction

6. Click the **Loop Management** tab, enable the following boxes, and click **Apply** (Figure 2-11).
 - Enable Co-Op tracking
 - Static Mode

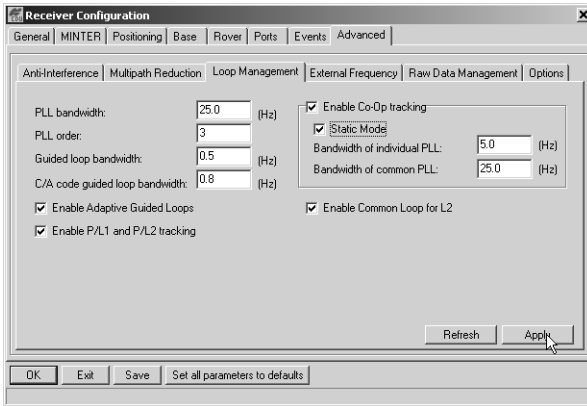


Figure 2-11. Advanced Configuration – Loop Management

7. Click **OK** to close the Receiver Configuration screen.
8. Click on **File->Disconnect**, then **File->Exit** to quit PC-CDU (Figure 2-12).

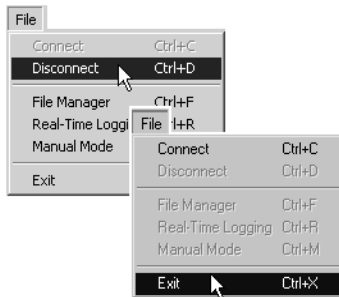


Figure 2-12. Click Disconnect then Exit



NOTICE

Disconnecting the receiver from the computer before exiting will eliminate any possible conflict in the management of your serial ports.

Once the receiver is configured, the configuration will remain until you change it either using PC-CDU or clearing the NVRAM.

Power Management

You can use Topcon's PC-CDU software to manage your receiver's power. The complete description of PC-CDU exceeds the scope of this manual, but can be found in the *PC-CDU User's Manual*. The latest copy of this software and the manual can be downloaded from the TPS website.

To access the tab controlling the power settings of your receiver, take the following steps:

1. Connect your receiver and computer. See "Connecting the HiPer+ and a Computer" on page 2-5 for this procedure.
2. Once connected, click **Configuration->Receiver** (Figure 2-13).

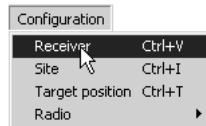


Figure 2-13. Configuration->Receiver

3. Select the Power Mode drop-down list to set the desired power source (Figure 2-14). Current Mode displays the current power source.

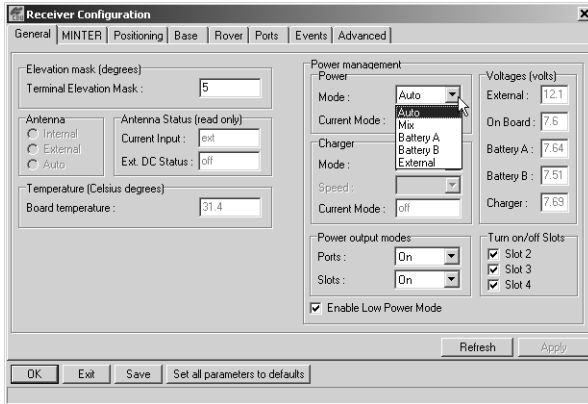


Figure 2-14. Select Power Mode

- Auto – receiver will automatically select the power source.
- Mix – receiver will automatically detect and start consuming power from the source with the largest voltage.
- Battery A – receiver will consume power from battery A.
- Battery B – receiver will consume power from battery B.
- External – receiver will use an external power supply.

- Select the Charger Mode drop-down list to set the desired charger mode (Figure 2-15). Current Mode displays the charging battery: a, b, or none (off).

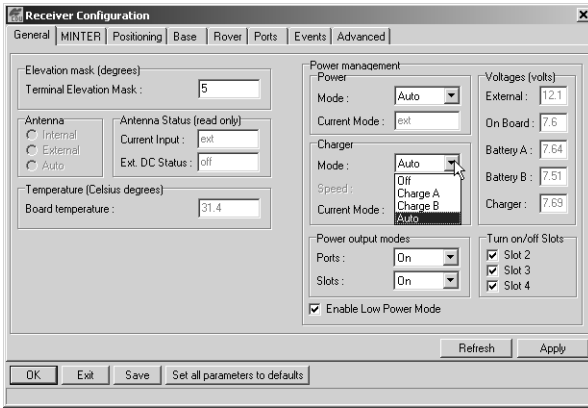


Figure 2-15. Select Charger Mode

- Off – receiver will not charge batteries.
- Charge A – receiver will charge only battery A.
- Charge B – receiver will charge only battery B.
- Auto – receiver will automatically detect and charge both batteries.

- Select the Power output modes Ports drop-down list to set power output on the serial ports (Figure 2-16).

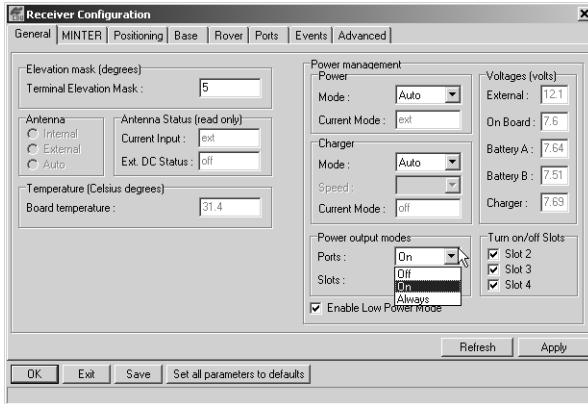


Figure 2-16. Select Power Output Modes – Ports

- On – the power board will deliver voltage on pin one of all serial port connectors when the receiver is turned on. If the receiver is turned off, there will not be any power on the ports.
- Off – the power will be absent even if the receiver is turned on.
- Always – the power board will deliver voltage on pin one of all serial port connectors even if the receiver is turned off.

6. Select the Power output modes Slots drop-down list to set power output on internal slots (Figure 2-17).

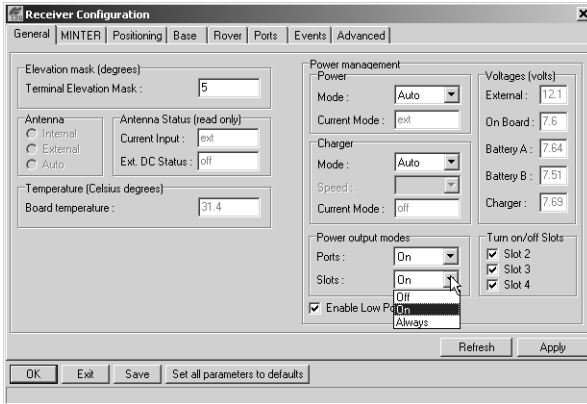


Figure 2-17. Select Power Output Modes – Slots

- On – all slots are powered if the receiver is turned on.
 - Off – internal slots will not be powered even if the receiver is turned on.
 - Always – internal slots will be powered even if the receiver is turned off.
7. View the Voltages information (Figure 2-18).

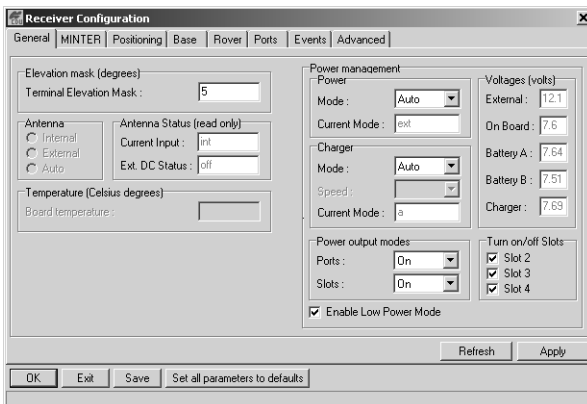


Figure 2-18. View Voltages Information

- External – displays the external power supply’s voltage.
 - On Board – displays the voltage drawn by the receiver board.
 - Battery A – displays the voltage of battery A.
 - Battery B – displays the voltage of battery B.
 - Charger – displays the charger’s output voltage during battery charging.
8. Select and check each of the Turn on/off Slots check boxes to enable the corresponding internal slots (Figure 2-19).
 9. Select and check the Enable Low Power Mode check box to put the receiver’s processor into low power consumption mode (Figure 2-19).

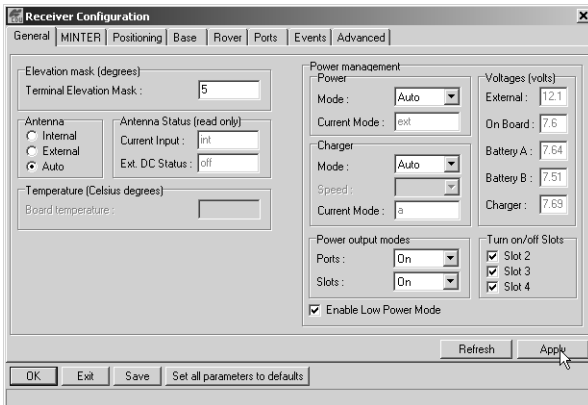


Figure 2-19. Enable and Apply Power Settings

10. Click **Apply**.

Charging Internal Batteries

Use one of the following conditions for maximum battery charge speed.

- The receiver is turned off. Power Mode and Charger Mode are set to Auto. See “Power Management” on page 2-15 for setting these parameters.
 - The receiver is turned on. Power Mode is set to External and Charger Mode is set to Auto.
1. Plug the power/charger cable into the power input port.
 2. Plug the power/charger cable into an available outlet.
 3. Press the **Reset** key on the receiver. This will ensure that the receiver is in Normal mode for charging. The receiver will not charge in Zero Power Mode (see “Zero Power Mode” on page 4-20 for more information).
 4. Leave overnight. A six-hour charge will charge the batteries about 90%. A seven-hour charge will fully charge the receiver. The internal batteries cannot be overcharged.
 5. When finished charging, set Power Mode to Auto.



NOTICE

If you remove a power supply cable before setting Power Mode to Auto, the receiver will be turned off. To turn it on, you will need to connect an external power supply once again.

Checking Internal Battery Status

You have three options to check the status of the internal batteries:

1. View the BATT LED for battery status. See “Battery LED” on page 4-6 for more information on this LED.
 - A green light indicates greater than 85% charge.
 - An orange light indicates an intermediate charge.
 - A red light indicates less than 15% charge.
2. Click on **Configuration->Receiver** and view the battery voltages on the Receiver Configuration screen.

OR

Click on **Help->About** and view the battery voltages on the About PC-CDU screen.

MINTER Configuration

The HiPer+ Minimum INTERface (MINTER) consists of two keys (Power and FN) and four LEDs (STAT, REC, BATT, and RX) that control and display the receiver’s operation (Figure 2-20).

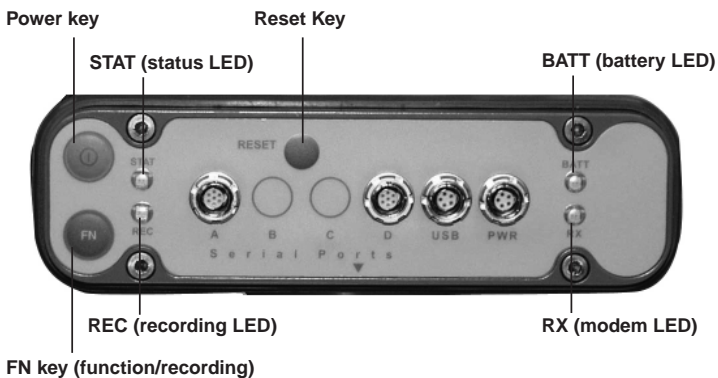


Figure 2-20. HiPer+ MINTER

The MINTER allows the user to perform numerous functions:

- Turn the receiver on or off, put it in Sleep mode or Zero power mode.
- Turn data recording on or off (FN key).
- Change the receiver's information mode.
- Show the number of GPS (green) and GLONASS (orange) satellites being tracked (STAT led).
- Show data recording status (REC led).
- Show each time data is recorded to internal memory (REC led).
- Show the status of post-processing mode (static or dynamic) when performing a Post-Processing Kinematic survey with the help of FN key (REC LED).
- Show the status (high charge, intermediate charge, or low charge) of the battery (BATT LED).
- Show the power source for the HiPer+ (BATT LED).
- Show the status of the modem and if it receives signals (RX LED).

You use PC-CDU to configure MINTER settings. Refer to the *PC-CDU User's Manual* for other possible MINTER configurations.

1. Connect your receiver and computer. See “Connecting the HiPer+ and a Computer” on page 2-5 for this procedure.

AND

Enable RTS/CTS handshaking (Figure 2-21 on page 2-24)

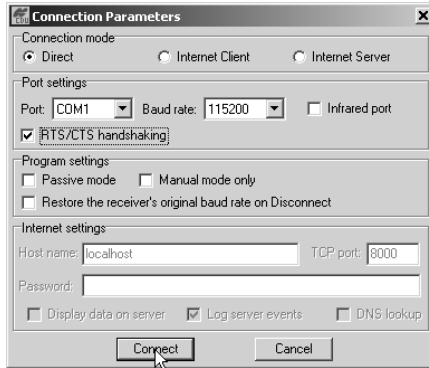


Figure 2-21. Connection Parameters – MINTER Settings

2. Click **Configuration->Receiver** (Figure 2-22).

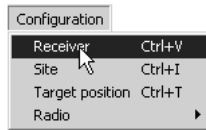


Figure 2-22. Configuration->Receiver

3. Click the **MINTER** tab, set the following parameters and click **Apply** (Figure 2-23 on page 2-25). See the following pages for descriptions of these parameters.
 - Recording interval on page 2-25
 - Elevation mask for log file on page 2-25
 - File name prefix on page 2-25
 - Always append to the file on page 2-26
 - Files Creation mode on page 2-26
 - Automatic File Rotation Mode (AFRM) on page 2-26
 - FN key mode on page 2-28
 - Initial data collection dynamic mode on page 2-28
 - Data recording auto-start on page 2-28

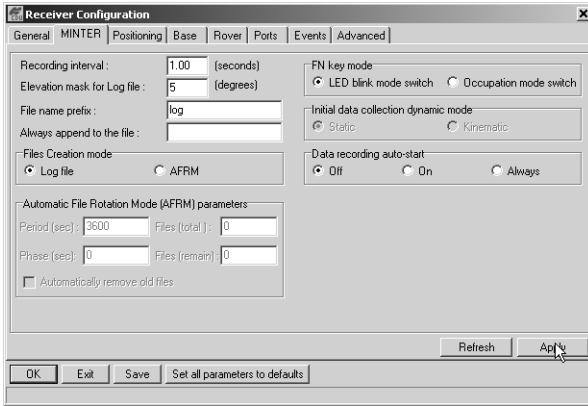


Figure 2-23. Receiver Configuration – MINTER Tab

Recording Interval parameter

This parameter specifies the message output interval into the log file when the MINTER FN key (pressed for 1–5 seconds) activates data logging. This setting is used not only when logging a single log file, but also when logging receiver data in AFRM mode. Values are 1–86400 seconds.

The default value is one second.

Elevation Mask for Log File parameter

This parameter specifies the minimum elevation angle for the satellites whose data will be put in the receiver files logged when pressing FN.

The default value is five degrees.

File Name Prefix parameter

This parameter specifies what prefix will be added to the names of the receiver files created when pressing FN. The prefix can be up to 20 characters long.

The default value is log.

Log file names have the following structure:

<prefix><month><day><sequential alphabet letter>

The file name depends on both the file creation time (month and day) and additional letter suffixes to avoid confusion between files created on the same day.

Always Append to the File parameter

If you want the new receiver data to be appended to an existing log file, enter the desired filename in this parameter. The setting can be up to 20 characters long.

Files Creation Mode parameter

This parameter has two possible operation modes:

- **Log file** – If the log file radio button has been selected, pressing the **FN** key will result in closing the current log file. If data logging is off, pressing **FN** will open a new log file.
- **AFRM** – If AFRM radio button has been selected, pressing **FN** will enable this mode. If AFRM has been enabled, pressing **FN** will disable this mode.

Automatic File Rotation Mode (AFRM) parameters

TPS receivers are capable of automatically rotating log files. During a “file rotation” event, the receiver closes the current file and opens a new one according to a user-defined schedule. The Period and Phase parameters specify this schedule. File rotation launches the moment the receiver time module Period is equal to Phase. More precisely, a new log file opens immediately before the scheduled epoch, causing data tagged with this epoch to be recorded to the new log file.

When opening a new log file, the receiver enables the default set of messages outputted with the default output period. Both the default set of messages and the default output period are programmable.

- **Period** – specifies the time duration of each log file created in AFRM mode.

Values are 60 to 86400 seconds. The default value is 3600 seconds.

- **Phase** – specifies the “phase” (constant time shift) of creating multiple log files in AFRM mode.

Values are 0 to 86400 seconds. The default value is zero seconds.

- **Files (total)** – a counter that specifies how many multiple log files must be created in AFRM until this mode automatically turns off. This counter decrements on every file rotation until it value becomes zero, then file rotation automatically stops. The counter initializes with AFRM.

Note that a log file opens immediately after turning AFRM on. This startup file is not considered a file rotation event; the AFRM counter will not decrement.

Values are 0 to $[2^{31}-1]$. The default value is 0 (zero). Zero means that an unlimited number of log files will be created.



NOTICE

The receiver’s memory holds up to 256 files.

- **Files (remain)** – specifies the number of files left for the receiver to create in AFRM.

Values are 0 to $[2^{31}-1]$. The default value is zero.

- **Automatically remove old files** – when no free memory is available to log data, automatically removes the earliest log file. If this parameter is enabled, your receiver will erase the file with the earliest file creation time/date. AFRM must be enabled to use this FIFO (First-In, First-Out) feature.

The default value is off (disabled).

FN Key Mode parameter

You use these two radio buttons to program how the receiver will react when pressing the FN key.

- LED blink mode switch – pressing **FN** will toggle between the MINTER's normal/extended information modes and start/stop data recording of Static survey.
 - **FN** pressed less than 1 second: changes the information mode (Normal or Extended Information (EI) Modes).
 - **FN** pressed from 1 to 5 seconds: starts/stops recording (Static post-processing mode).
- Occupation mode switch – pressing **FN** (less than one second) will insert into the corresponding log file a message indicating that the survey type has been changed from static to kinematic, or vice versa. If the REC LED blinks green, the current mode is dynamic, if it blinks orange, the current mode is static. For more details, see Table 4-1 on page 4-4, and refer to the *MINTER User's Manual* and *PC-CDU User's Manual*.

Initial Data Collection Dynamic Mode parameter

These radio buttons specify the starting occupation type descriptor inserted at the beginning of receiver files logged. You select Static or Kinematic to specify that the corresponding log file will start with a static (STOP) or kinematic (GO, Trajectory) occupation, respectively.

Data Recording Auto-start parameter

These radio buttons allow you to program your receiver's behavior in the event of a power failure.

Table 2-1 gives the different scenarios available and the results after power is restored to the receiver. "Specified file" refers to the file name entered in the Always append to file parameter.

Table 2-1. Data Recording Parameter Behavior

Before Power Failure	Enabled Radio Button Results		
	Off	On	Always
1 Receiver data logged to file specified.	Data logging will not resume when power is restored.	Receiver will resume data logging to the same file when power is restored.	Receiver will resume data logging to the same file when power is restored.
2 Receiver data logged to default file.	Data logging will not resume when power is restored.	A new log file will open when power is restored and data will log to this file.	A new log file will open when power is restored and data will log to this file.
3 File specified; receiver data logging not started.	No file will open with this name. Data logging will not start when power is restored.	No file will open with this name. Data logging will not start when power is restored.	A log file with this name will open and data logging will start after power is restored.
4 No file specified; receiver data logging off.	Data logging will not start when power is restored.	Data logging will not start when power is restored.	A log file with a default name will open and data logging will start after power is restored.

Also, if Always is enabled, your receiver will automatically start logging data (to a newly created or an existing file) in the following three cases:

- After pressing the MINTER power key.
- After resetting the receiver (with PC-CDU or the Reset key).
- After taking the receiver out of Sleep Mode.

Radio Configuration

The internal radio in your HiPer+ and the base radio can be configured differently depending on your needs and working conditions. The software program required to configure the radio modem differs depending on your receiver configuration, and allows you to:

- access the internal modem
- configure the modem
- check or change the modem configuration

The following sections provide basic radio configuration information for UHF and GSM radio modems.



NOTICE

Your receiver may be configured without a radio modem. If this is the case, please skip to “Collecting Almanacs” on page 2-49.

Configuring a UHF Radio Modem

To access your PDL UHF radio modem, you create a daisy chain between the HiPer+ serial port (A or D) and the radio modem (Port C) using PC-CDU. You then activate the PDL configuration program on your PC and proceed with the radio configuration.

1. Connect your receiver and computer. See “Connecting the HiPer+ and a Computer” on page 2-5 for this procedure.

AND

Use a 38400 baud rate.

- Once connected, click on **File->Manual Mode** to create a daisy chain between the receiver's port (A or D) and the HiPer+ PDL modem (Figure 2-24).

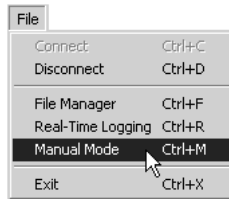


Figure 2-24. File->Manual Mode

- Type each of the following commands, pressing **Enter** (or clicking **Send command**) after each command.

```
%% set,dev/ser/c/rate,38400
%% set,dev/ser/c/echo,/cur/term
%% set,dev/ser/c/imode,echo
%% set,cur/term/eoff,QUIT
%% set,cur/term/echo,/dev/null
%% set,cur/term/imode,echo
%% set,cur/term/echo,/dev/ser/c
```

The Manual Mode screen displays RE002%% in response to each of these commands. When finished, you should have seven responses (Figure 2-25 on page 2-32).

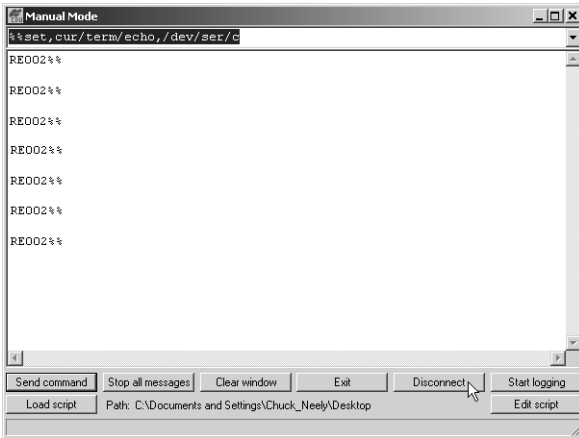


Figure 2-25. Manual Mode – Command Responses



TIP

Save this set of commands to a script file and load this file later to the receiver with a single operation. To create a script file, see Appendix A.

4. Click **Disconnect** (Figure 2-25).
5. Run the PDL Radio Configuration Program (pdlconf.exe) from Pacific Crest (Figure 2-26 on page 2-33).

Make sure you have the latest version (2.20 or higher). Upgrades for this software are available on the Pacific Crest website (www.paccrst.com/download/upgrade.htm).

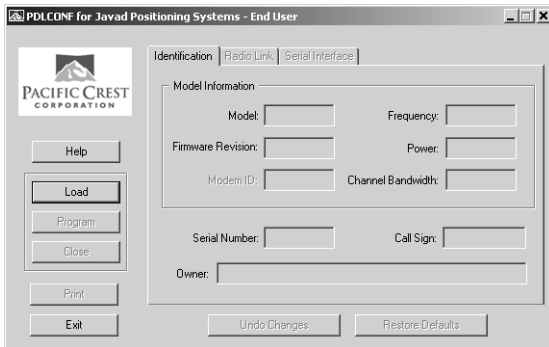


Figure 2-26. PDL Radio Configuration Main Screen

6. Click the **Pacific Crest logo** in the upper left corner of the main screen (Figure 2-27).

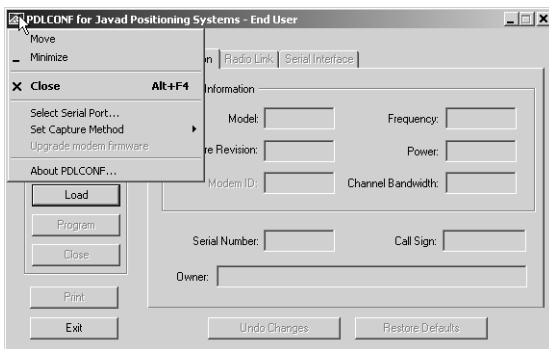


Figure 2-27. PDL Top Left Corner Icon Menu

7. From the pop-up menu, click **Set Capture Method** ->**Soft Break** (Figure 2-28).

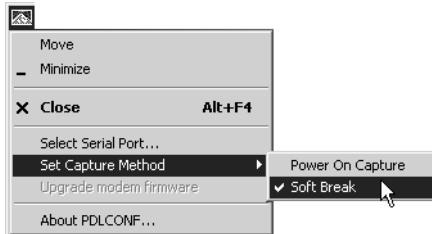


Figure 2-28. Set Capture Method->Soft Break

8. Click **Load** to connect to the radio (Figure 2-29).

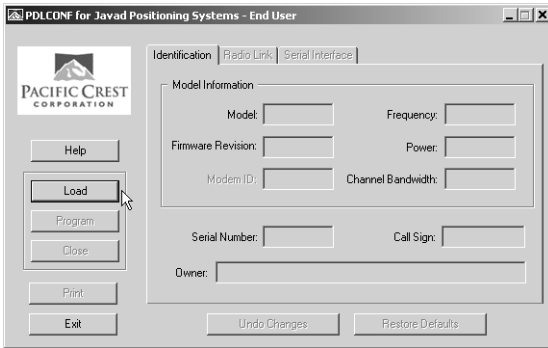


Figure 2-29. Click Load

9. On the Identification tab, type Owner information (Figure 2-30).

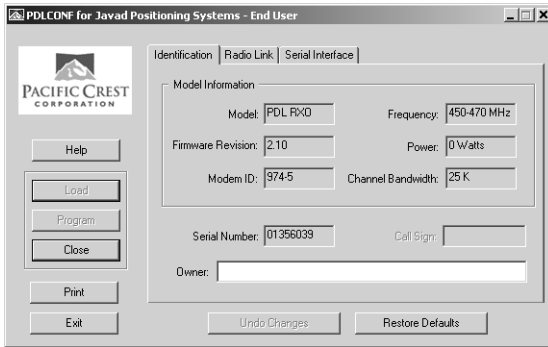


Figure 2-30. PDL Identification Tab

The Identification screen supplies current information concerning firmware version, serial number, frequency, and power of the radio modem.

10. Click the Radio Link tab and set the following parameters (Figure 2-31 on page 2-36):
- Manual – enable
 - Channel TX RX – set channel and frequency as desired
 - Link Rate – set to 9600 (requires a modulation type of GMSK)
 - Digisquelch – set on High for Rover; Low or Off for Base station
 - Forward Error Correction – enable
 - Scrambling – enable
 - Local Address – leave at 0

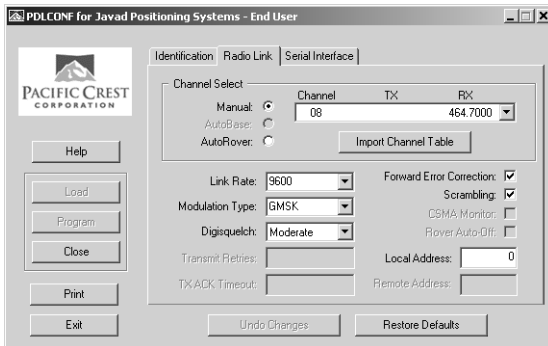


Figure 2-31. PDL Radio Link Tab

NOTICE NOTICE

The Base and internal HiPer+ (Rover) PDL radios must be configured with the same Channels, Radio Link characteristics (except Digisquelch) and Serial Interface parameters.

11. Click the Serial Interface tab and set the following parameters (Figure 2-32 on page 2-37):

- Baud Rate – 38400
- Parity – None

NOTICE NOTICE

Parity should always be set to None.

- Mode – Transparent w/EOT Timeout

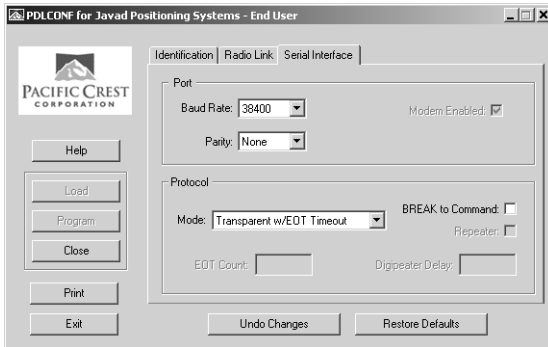


Figure 2-32. PDL Serial Interface Tab

12. If you made changes, click the **Program** button on the left of the screen to save them to the modem's memory (Figure 2-33).

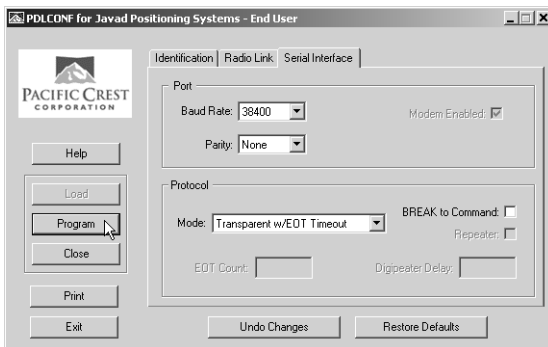


Figure 2-33. PDL – Click Program

- Click **Close** and then **Exit** to quit the program (Figure 2-34).

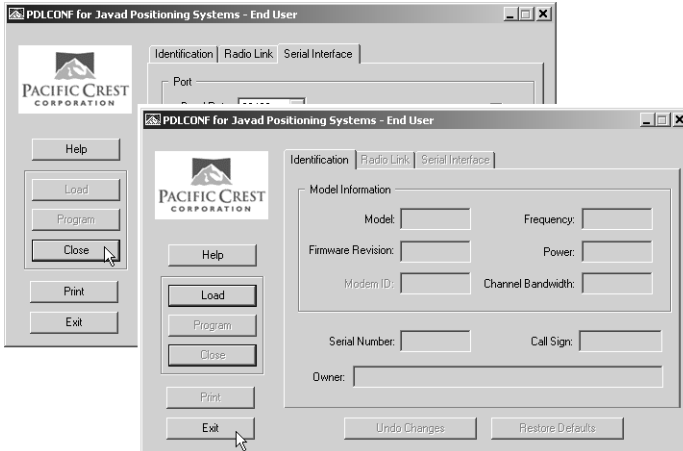


Figure 2-34. Click Close then Exit

- Open PC-CDU.
- Click **File->Connect**.
- On the Connection Parameters screen, select a baud rate of 38400 and enable the Manual mode only check box (Figure 2-35), then click **Connect**.

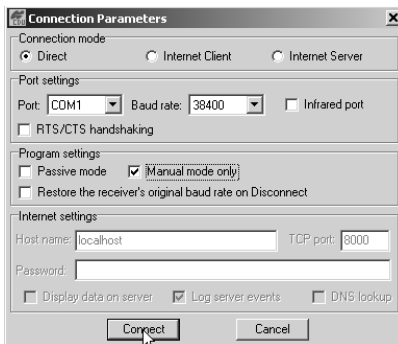


Figure 2-35. Connection Parameters – Manual Mode Only

17. On the Manual Mode screen, write the following commands, pressing **Enter** (or clicking **Send command**) after each command. When finished, you should have six responses (Figure 2-36).

QUIT

% %set,cur/term/imode,cmd

% %set,dev/ser/c/echo,/dev/null

% %set,dev/ser/c/imode,cmd

% %set,dev/ser/c/rate,38400

% %set,cur/term/rate,115200

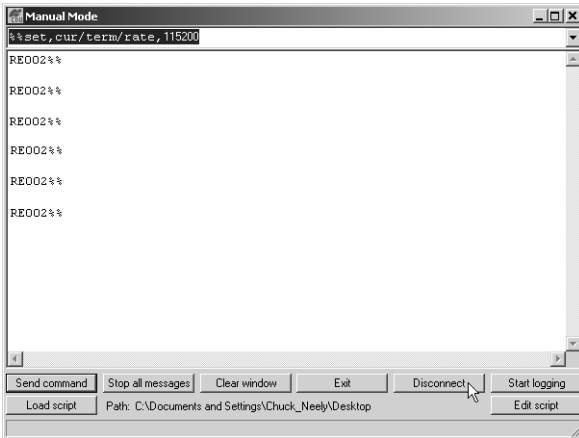


Figure 2-36. Manual Mode Command Responses

18. Click **Disconnect** (Figure 2-36). Continue with other configuration or operation functions as needed.

Configuring a GSM Radio Modem

 **NOTICE**

To comply with RF exposure requirements, maintain at least 20cm between the user and the GSM radio modem.

To access your GSM radio modem, you will need to use Topcon's FC-1000 external controller and TopSURV. Refer to the *TopSURV Reference Manual* or the *TopSURV User's Manual* for more detailed configuration information.

 **NOTICE**

Configuration parameters are similar regardless of the software used for configuring a GSM modem.

Unlike the UHF radio modems and PDLCONF, TopSURV automatically connects the receiver and modem boards for configuration purposes. When you configure radios, you configure the Base and Rover radios separately.

1. Using the RS232 cable, connect your external controller (FC-1000) to the receiver's serial port A.
2. Press the **power** buttons on the receiver and external controller to turn them on, and start TopSURV.

3. Click **Job->Config->Survey** to open the Select Survey Config dialog box (Figure 2-37).

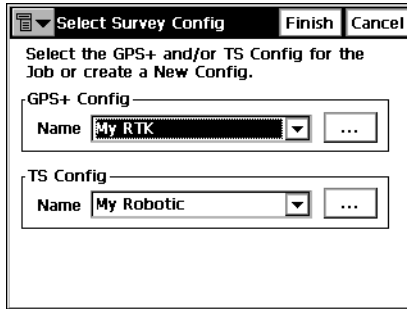


Figure 2-37. Select a Survey Configuration

4. From the GPS+ Config drop-down list, select My RTK, or the name of your GPS+ survey configuration, and click the “...” (continue) button (Figure 2-37).



TIP

If this is a new configuration, refer to the TopSURV User’s Manual for the procedure to configure a new survey. Otherwise, continue below to configure your radio.

5. Press **Next** to navigate to the Base or Rover Radio configuration screen, usually a couple dialog boxes beyond the Select Survey Config dialog box.

- On the radio configuration dialog box, select either appropriate GSM radio modem and set the following parameters (Figure 2-38):

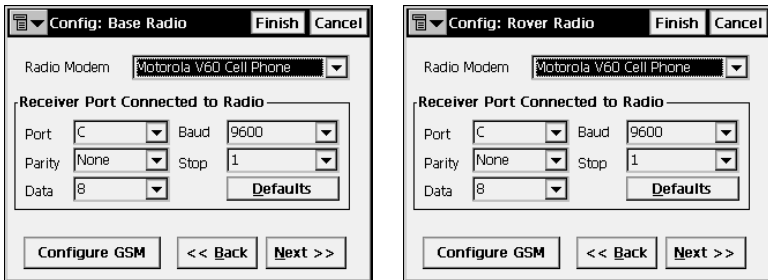


Figure 2-38. Base or Rover Radio Configuration

- Port – C for internal radio modems or D for external radio modems
 - Parity – None
 - Data – 8
 - Baud – 9600
 - Stop – 1
- Press **Configure GSM** to display the appropriate Cell Phone parameters dialog box, and enter the following parameters for either the Base or Rover (Figure 2-39).

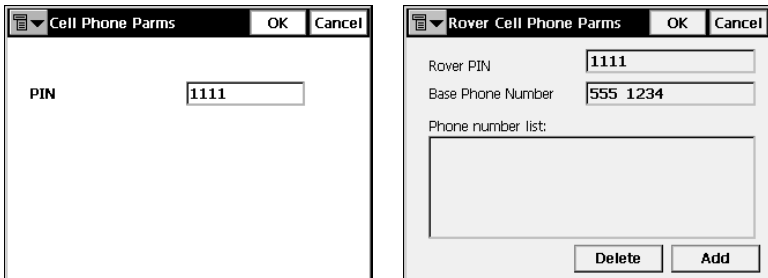


Figure 2-39. Set Base or Rover Cell Phone Parameters

- For the Base radio – If your GSM modem does not require a PIN, leave this field blank.

The Base radio is the Slave, only receiving calls from Rover stations, so no phone number to call is required.

- For the Rover radio – If your GSM modem does not require a PIN, leave this field blank.

The Rover radio is the Master, sending calls to the Base station. The Base station's phone number is required, so have it available to input at this time, or select the correct number from the Phone number list (if available).

At this time, you can press **Add** to save the phone number to the list, or you can press **Delete** to remove unwanted phone numbers from the list.

8. Press **OK** to return to the radio configuration screen. Continue with other configuration or operation functions as needed.

Bluetooth Module Configuration

Use BTCONF, the Bluetooth module's configuration program, and your computer to:

- access the Bluetooth wireless technology module
- configure the Bluetooth module
- check or change the module's configuration

To access the Bluetooth wireless technology module, first download and install BTCONF, then connect your computer and the receiver and run the configuration program.

1. Create or locate the following folder:
C:\Program Files\TPS\BTCONF
2. Download btconf.zip from the TPS website and unzip it into the BTCONF folder. This zip file contains Btconf.exe, the executable file for the Bluetooth module configuration program.

Each time you run BTCONF and configure the Bluetooth module, BTCONF saves your settings in a file (btconf.ini). BTCONF automatically updates the file each time you make changes to the Bluetooth module's settings.

**TIP**

To maintain unique Bluetooth module settings for different purposes, keep copies of BTCONF in separate folders.

To uninstall, or remove, BTCONF, delete any applicable BTCONF directories or folders, and any BTCONF shortcuts.

Once you have BTCONF available, follow these steps to configure the Bluetooth module.

1. Using the RS232 cable, connect the serial port of your computer (usually COM1) to the receiver's serial port A.
2. Press the **power** buttons on the receiver and computer to turn them on.
3. Run the Bluetooth module configuration program (Btconf.exe) (Figure 2-40).



Figure 2-40. Bluetooth Module Configuration Main Screen

Notice that the lower left corner shows a “Disconnected” status for the computer and Bluetooth module.

For BTCONF version and copyright information, click the **About** button.

- From the drop-down list in the upper left corner, select the computer serial port (usually COM1) used for communication (Figure 2-41).

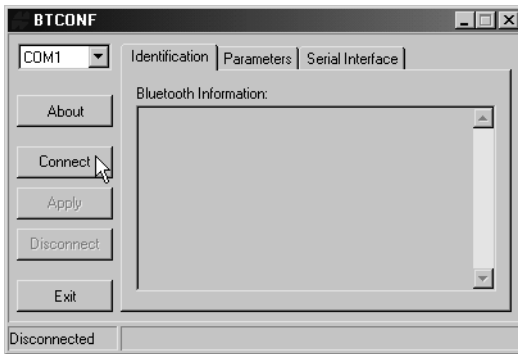


Figure 2-41. Select Communication Port and Click Connect

- Click **Connect** to connect the computer and Bluetooth module (Figure 2-41).

Once the receiver and computer connect through BTCONF, the Identification tab (Figure 2-42 on page 2-46) displays the following information:

- Bluetooth name – the name of the Bluetooth module, set in the Parameters tab.
- Bluetooth address – the unique electronic address for your Bluetooth module.
- Firmware version – the current firmware version of the Bluetooth module.

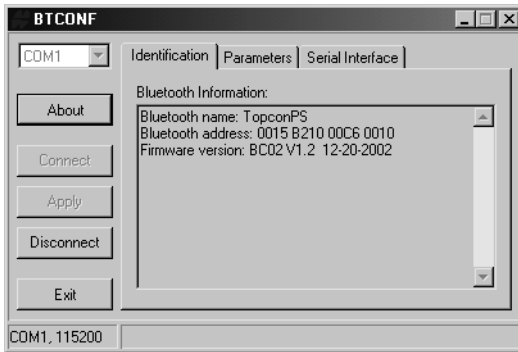


Figure 2-42. BTCONF Identification Tab

Notice that the COM port and baud rate display in the lower left corner.

6. Click the **Parameters** tab (Figure 2-43). The Parameters tab sets identifying and security information for your Bluetooth module. The security section allows you to set data security and unauthorized access parameters for the Bluetooth module.
7. Enter up to 14 characters to set a unique name for the Bluetooth module (Figure 2-43), and click **Apply**.

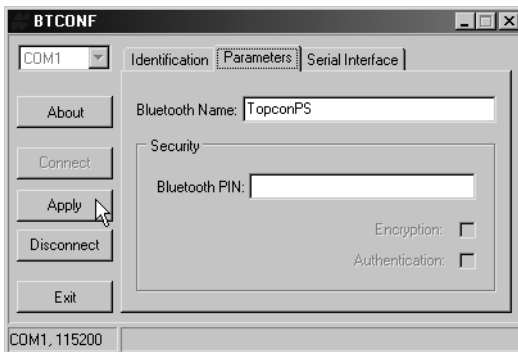


Figure 2-43. BTCONF Parameters Tab

8. To set security parameters (Figure 2-44), enter and enable the following, then click **Apply**:
- Bluetooth PIN – enter up to 16 characters to specify a personal identification number for the Bluetooth module.
 - Encryption – enable to have the Bluetooth module encrypt wirelessly sent data. To read encrypted data, the user must have the same PIN used in the device that sent the data.
 - Authentication – enable to require a PIN before two Bluetooth enabled devices (such as, the receiver and a computer) can establish a communication link. The two devices must use the same PIN.



NOTICE

If you do not need security settings, leave these parameters disabled.

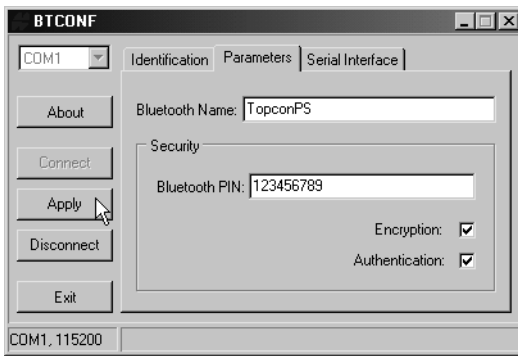


Figure 2-44. BTCONF Security Parameters

- Click the **Serial Interface** tab (Figure 2-45). Enable Echo to display Bluetooth module replies and corresponding commands on the computer terminal. If needed, click **Apply**.

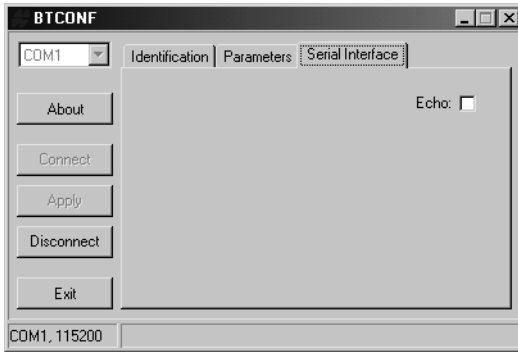


Figure 2-45. BTCONF Serial Interface Tab

- Click **Disconnect** then **Exit** (Figure 2-46) to quit BTCONF.

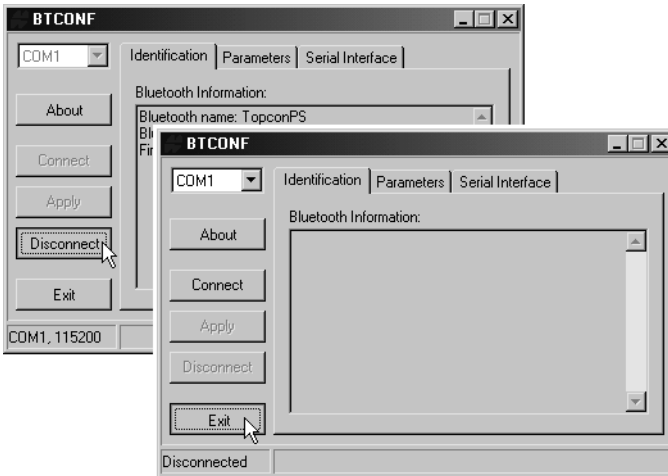


Figure 2-46. Click Disconnect then Exit

Collecting Almanacs

Each satellite broadcasts a message (almanac) which gives the approximate orbit for itself and all other satellites. If the receiver has an almanac, you can considerably reduce the time needed to search for and lock on to satellite signals.

The receiver regularly updates the almanac and stores the most recent almanac in its Non-Volatile Random Access Memory (NVRAM).

1. Set up the receiver in a location with a clear view of the sky.
2. Turn on the receiver.



NOTICE

If 15 minutes have passed and the receiver does not lock on to satellites, you may need to clear the NVRAM. See "Clearing the NVRAM" on page 4-18 for this procedure.

You will need to collect or update the almanac:

- If the receiver has been off for a long time.
- If the last known receiver position, stored in the NVRAM, is different from the present position by several hundred kilometers.
- After loading a new OAF.
- After loading new firmware.
- After clearing the NVRAM.
- Before surveying.

The collection and/or update of an almanac can take as long as 15 minutes.

Notes:

Setup and Survey

This chapter describes:

- HiPer+ setup
- RTK Base station setup
- RTK Rover setup
- Basic surveying with the HiPer+

Your HiPer+ can be used as a Rover station or a Base station with an optional external radio.

HiPer+ Receiver Setup

To set up your HiPer+ receiver, you must:

1. Configure the receiver as shown in Chapter 2.
2. Set up your Base or Rover station. See “Set up HiPer+ Receiver” on page 3-2
3. Measure the antenna height. See “Measure Antenna Height” on page 3-2.
4. Begin collecting data. See “Collect Data” on page 3-4.

All HiPer+ receivers include an internal, micro-strip antenna. This antenna is able to capture L1/L2 signals from GPS and GLONASS satellites.

Set up HiPer+ Receiver

This section assumes you have already configured your receiver using PC-CDU.

1. Place the HiPer+ on the appropriate tripod or bipod.
2. Center the receiver over the point at which data will be collected. For most applications, this should be at a location with a clear view of the sky.
3. If using the HiPer+ as a Base station, connect the external radio to the receiver.

Measure Antenna Height

The location of the antenna relative to the point being measured is very important for both surveys in which the elevation of the points is important and in surveys for horizontal location only. Horizontal surveys are often larger in area than can reliably fit on a flat plane, therefore the antenna adjustment must be done in three dimensions and then projected onto a two dimensional plane.

The receiver calculates the coordinates of the antenna's phase center. To determine the coordinates of the station marker, the user must specify the following:

- Measured height of the antenna above the station marker
- Method of measuring the antenna height
- Model of the antenna used

Antennas have two types of measurements:

- Vertical – measured from the marker to the antenna reference point (ARP) located on the bottom of the receiver at the base of the mounting threads.
- Slant – measured from the marker to the lower edge of the antenna slant height measure mark (SHMM) located on both end panels of the receiver.

4. Measure the antenna height above the point or marker.

Figure 3-1 illustrates the antenna offsets and Table 3-1 gives the offset measurements. (See Figure 1-3 on page 1-15 and Figure 1-4 on page 1-16 for the exact SHMM location.)

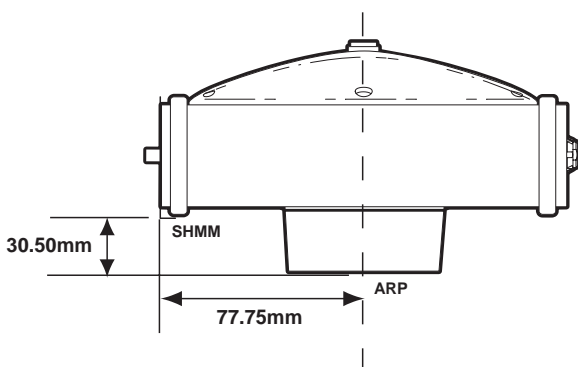


Figure 3-1. HiPer+ Antenna Offsets

- SHMM to ARP vertical offset = 30.50mm
- SHMM to ARP horizontal offset = 77.75mm

Table 3-1. HiPer+ Antenna Offset Measurements

	To L1 Phase Center	To L2 Phase Center
Up	102mm	94mm

The actual point to which surveying with GPS/GLONASS measures is called the Phase Center of the antenna. This is analogous to the point at which a distance meter measures in a prism. A user must enter the prism offset to compensate for this point not being at a physical surface of the prism. In the case of a GPS/GLONASS antenna, the offset is entered depending on the type of measurement taken. For vertical, the offset is simply added to the measured vertical height to produce a “true” vertical height. For slant height, the vertical

height must first be calculated using the radius of the antenna, then the offset can be added. The offsets are not the same number because of the difference in location between the slant measuring point and the vertical measuring point.

5. Record the receiver serial number, antenna height, point name, and start time in the field notes.
6. Press the **power** key and release it to turn the receiver on. The STAT (status) light (LED) will blink red at first.
7. Once the receiver has locked on to one or more satellites, the STAT light will blink green for GPS satellites, orange for GLONASS satellites, and a short red blink indicating it has not solved a position. Four or more satellites provide optimal positioning.
8. Once the short red blink is gone, the receiver has a position and surveying can begin. You should wait for green and orange lights before beginning data collection. This ensures that the receiver has the correct date and time, and is locked on to enough satellites to ensure good quality data.

The process of locking on to satellites normally takes less than one minute. In a new area, under heavy tree canopy, or after resetting the receiver, it may take several minutes.

Collect Data

9. To begin collecting data, press and hold the **FN** (function) key for more than one second and less than five seconds.
10. Release the **FN** key when the REC (recording) LED light turns green. This indicates that a file has opened and data collection has started. The REC LED blinks each time data is saved to the internal memory.

**TIP**

You can use PC-CDU to configure data logging. See “MINTER Configuration” on page 2-22 or refer to the *PC-CDU User’s Manual* for more information.

11. When finished, press and hold the **FN** key until the REC LED light goes out.
12. Press and hold the **power** key until all lights go out, then release.

Surveying with the HiPer+

The HiPer+ receiver can be used to perform the following types of surveying:

- Static
- Kinematic
- Real-time kinematic (RTK)

Static Survey

Static surveying is the classic survey method, well suited for all kinds of baselines (short, medium, long). At least two receiver antennas, plumbed over the survey marks, simultaneously collect raw data at each end of a baseline during a certain period of time. These two receivers track four or more common satellites, have a common logging rate (5–30 seconds), and the same elevation mask angles. The length of the observation sessions can vary from a few minutes to several hours. The optimal observation session length depends on the surveyor’s experience as well as the following factors:

- The length of the baseline measured

- The number of satellites in view
- The satellite geometry (DOP)
- The antenna's location
- The ionospheric activity level
- The types of receivers used
- The accuracy requirements
- The necessity of resolving carrier phase ambiguities

Generally, single-frequency receivers are used for baselines whose lengths do not exceed 15 kilometers (9.32 miles). For baselines 15 kilometers or greater, use dual-frequency receivers.

Dual-frequency receivers have two major benefits. First, dual-frequency receivers can estimate and remove almost all ionospheric effect from the code and carrier phase measurements, providing much greater accuracy than single-frequency receivers over long baselines or during ionospheric storms. Secondly, dual frequency receivers need far less observation time to reach the desired accuracy requirement.

After the survey completes, data the receivers collect can be downloaded onto a computer and processed using post-processing software (for example, Pinnacle).

The procedure that follows describes the steps the operator should take to perform a Static Survey using MINTER.

1. Connect your receiver and computer. See “Connecting the HiPer+ and a Computer” on page 2-5 for this procedure.
2. Open PC-CDU, click **Configuration->Receiver ->MINTER** and specify the following parameters, then click **Apply** (Figure 3-2 on page 3-7):
 - Recording Interval – 15 seconds

- Elevation Mask Angle – 15 degrees
- File Name Prefix – last 3 digits of receiver serial number
- LED blink mode switch – enable to start and stop static data recording using the FN key

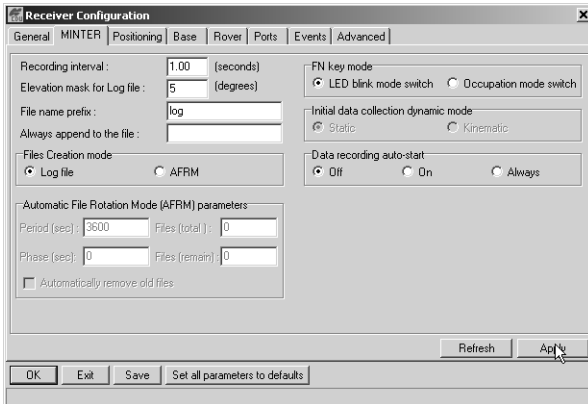


Figure 3-2. Configuration->Receiver->MINTER

3. Click the **Advanced** tab and then the **Multipath** tab, set the following parameters, then click **Apply** (Figure 3-3 on page 3-8):
 - Code Multipath Reduction – enable
 - Carrier Multipath Reduction – enable

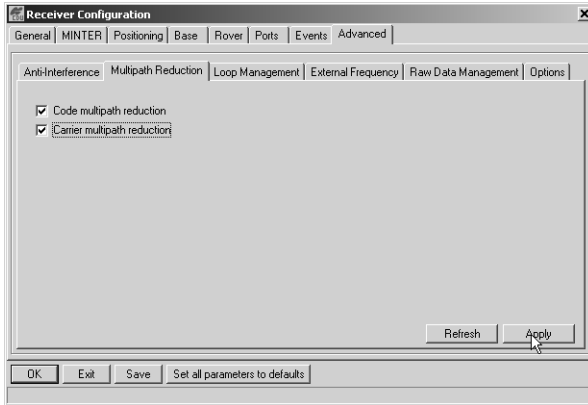


Figure 3-3. Advanced->Multipath

4. Click the **Loop Management** tab and set the following parameters, then click **Apply** (Figure 3-4):
 - Enable Co-Op tracking – enable
 - Static mode – enable

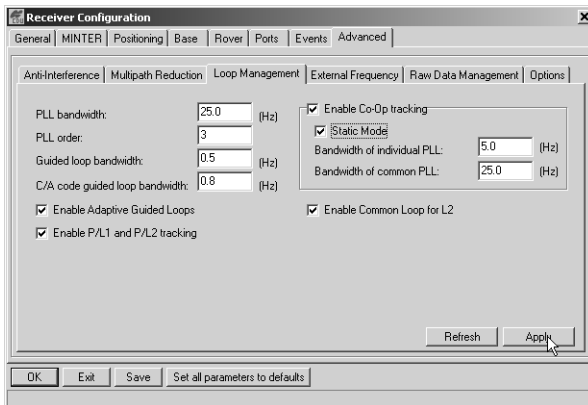


Figure 3-4. Advanced->Loop Management

5. Set up each antenna and receiver as described in “HiPer+ Receiver Setup” on page 3-1.
6. Begin your survey.

Kinematic Survey

You can use the kinematic survey method for either a Stop and go survey or a Kinematic continuous (trajectory) survey.

Stop and Go Survey

The stationary receiver (Base station) is set up at a known point such as a survey monument, or an unknown point. The receiver continually tracks satellites and logs raw data into its memory. The rover receiver is set up at an unknown point and collects data in static mode for 2 to 10 minutes.

1. Using PC-CDU, configure and set up the Base as described in “Static Survey” on page 3-5.
2. Click **Configuration->Receiver->MINTER**, and configure the Rover with the following parameters, then click **Apply** (Figure 3-5):
 - FN Key Mode, Occupation Mode Switch – enable
 - Initial data collection dynamic mode, Static – enable

See to Table 4-1 on page 4-4 for FN key functions and REC LED statuses.

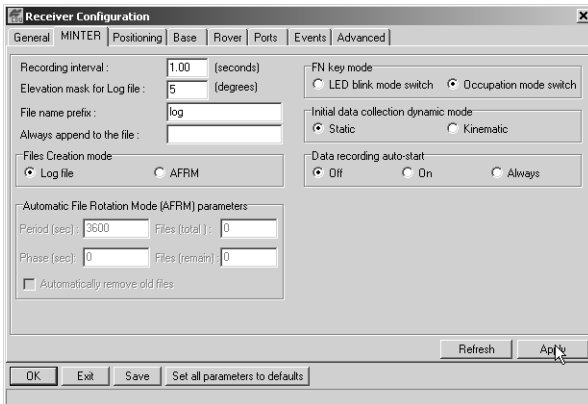


Figure 3-5. Rover MINTER Configuration

**NOTICE**

Remember, both Base and Rover receivers must collect data from the common satellites at a common data recording rate and with identical elevation mask angles.

3. Set up the Rover at an unknown point and press **power**. Allow the Rover to collect static data for two to ten minutes. The REC LED will be orange.
4. Check the STAT light for satellites tracked.
5. When finished, press the **FN** key for less than a second to assign the Rover to kinematic.

**TIP**

Remember, if the REC LED blinks green, the current mode is dynamic, if it blinks orange, the current mode is static.

6. Move the Rover to the next location (survey point), and press the **FN** key for less than a second to collect the data in static mode for two to ten minutes.
7. Repeat steps five and six until all points have been surveyed. The occupation time for the points depends on the same factors as for the static survey method.
8. When finished, press the **FN** key for one to five seconds to stop logging data. Turn off the Rover if needed.

This method of GPS survey allows the operator to reduce the point occupation time, thus permitting field crews to survey many more points compared to the other methods available.

Kinematic Continuous

Kinematic continuous surveying, also known as trajectory surveying, allows the Rover to move without having to stand still, record data, move to another point, and do it all again.

If the surveyor knows the coordinates of the starting point, the rover will not need to be initialized. The determination of ambiguity parameters is carried out while the rover is moving and is called “on the fly ambiguity resolution.” Furthermore, if loss of lock occurs (such as, an obstruction that prevents a clear view of the sky), the receiver will be re-initialized on the fly.

After the survey completes, raw data collected by the receivers are downloaded onto a computer and processed using post-processing software (for example, Pinnacle).

1. Using PC-CDU, configure and set up the Base as described in “Static Survey” on page 3-5.
2. Using PC-CDU, click **Configuration->Receiver ->MINTER**, and configure the Rover with the following parameters, then click **Apply** (Figure 3-5 on page 3-9):
 - FN Key Mode, Occupation Mode Switch – enable
 - Initial data collection dynamic mode, Kinematic – enable
3. Set up the Rover at a starting point with unknown coordinates and press the **power** key. Pause for several minutes while the receiver compiles an almanac.
4. Check the STAT light for satellites tracked.
5. Press the **FN** key for one to four seconds to begin logging data in kinematic mode (the antenna status is kinematic).

6. Move the Rover receiver along the selected trajectory.
7. Once the Rover receiver reaches the end point of the trajectory, pause for several minutes.
8. When finished, press the **FN** key to stop logging data and turn off the Rover.

Real-time Kinematic Survey

Real-time kinematic (RTK) is a differential GPS process where information, such as differential corrections, is transmitted in real-time from a Base station to one or more Rover stations.

Setting up an RTK Base Station

To configure an RTK Base station using PC-CDU, take the following steps:

1. Set up the Base station receiver's antenna as described in "HiPer+ Receiver Setup" on page 3-1.
2. Connect an external modem to port C for a Legacy-E or port D for the HiPer+.
3. Set up hardware as shown in Figure 3-6 on page 3-13. This setup shows a Legacy-E Base station setup.



Figure 3-6. Legacy-E Base Station Setup



NOTICE

Connect the radio antenna before switching the modem to the transmitting mode.

4. Press the **power** key on the receiver.
5. Check the STAT light for tracked satellites.
6. Connect your receiver and computer. See “Connecting the HiPer+ and a Computer” on page 2-5 for this procedure.
7. Using PC-CDU click **Configuration->Receiver**.

- Click the **Set all parameters to defaults** button located at the bottom of the Receiver Configuration screen (Figure 3-7).

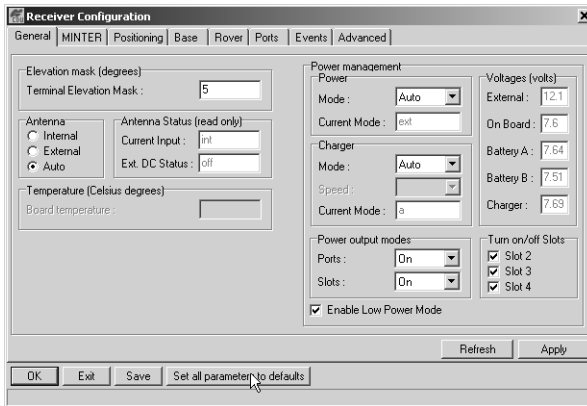


Figure 3-7. Set All Parameters to Defaults

- On the Receiver Configuration screen, select the **MINTER** tab. Specify desired settings. Refer to the *PC-CDU User's Manual* for more information.
- Select the **Positioning** tab and set the Position Masks, Elevation mask parameter to 15 (Figure 3-8).

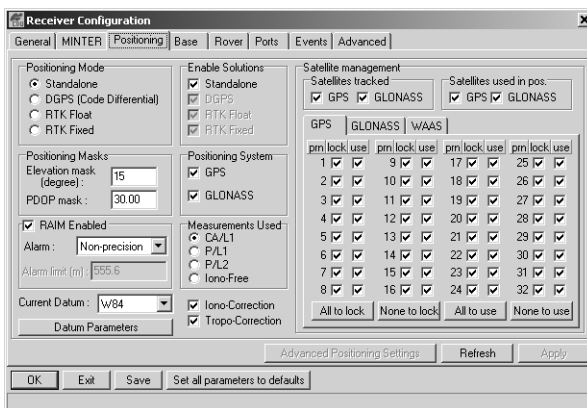


Figure 3-8. Receiver Configuration – Positioning

11. Select the **Base** tab and set the following parameters (Figure 3-9):

- GPS/GLO at one time – enable
- Antenna position – enter Lat, Lon, and Alt values.

OR

Click **Get from receiver**.

OR

Enable Averaged and enter the Averaged Span in seconds, then click **Apply**. Click **Tools->Reset receiver** and wait until the specified interval (span) completes. Examine the Base coordinates on the Base tab, they should correspond to the coordinates obtained from the average. Click **Refresh** if the coordinates are zeros.



NOTICE

The reference geodetic coordinates specified here relate to the antenna L1 phase center.

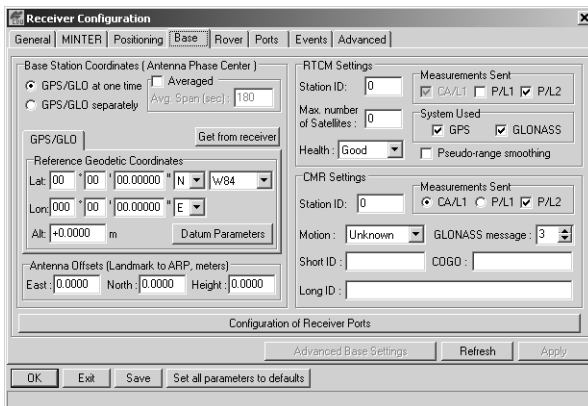


Figure 3-9. Base Tab Configuration

12. Select the **Ports** tab and set the following port parameters (Figure 3-10). Use serial port C for an internal PDL, GSM, or Spread Spectrum 915 MHz/ 2.4 GHz modem.
 - Output drop-down list – select type and format of differential corrections.
 - Period (sec) – enter interval at which receiver will generate differential corrections.
 - Baud rate drop-down list – select a baud rate (i.e., the rate at which differential messages will be transmitted from receiver to modem).

**TIP**

For Pacific Crest PDL (UHF) modems, use a 38400 baud rate. For Spread Spectrum 915 MHz/2.4 GHz modems, use a 19200 baud rate.

The screenshot shows the 'Receiver Configuration' dialog box with the 'Ports' tab selected. The 'Serial' sub-tab is active. There are four rows for Serial A, B, C, and D. Each row has an 'Input' dropdown (all set to 'Command'), an 'Output' dropdown, a 'Period (sec)' text box, and a 'Baud rate' dropdown. Serial C has 'RTK RTCM corr.' selected for output, a period of '1.00', and a baud rate of '38400'. There are 'RTS/CTS' checkboxes for each port, all of which are unchecked. At the bottom right, there are 'Refresh' and 'Apply' buttons. The 'Apply' button is highlighted with a mouse cursor. At the bottom left, there are 'OK', 'Exit', 'Save', and 'Set all parameters to defaults' buttons.

Figure 3-10. Base Configuration – Ports

13. Click **Apply**. The receiver begins sending data to the selected port.

If using a Pacific Crest PDL (UHF) external modem, follow these steps to configure this modem:

14. When finished with the previous steps, press the **power** button on the external modem.
15. Select the radio transmission power using the Low/High toggle on the rear panel of the modem. When in High, the AMP PWR LED will be on.
16. Use the Channel button to set the frequency channel. Check that the modem transmits the corrections (the TX LED will blink red each time data transmits).

For more details on the settings available for configuring the Base station, refer to the *PC-CDU User's Manual*.

Setting up an RTK Rover

Use the following steps to set up an RTK Rover station. You should already have programmed the modem.

Figure 3-11 on page 3-18 shows the hardware setup for a Rover station with an external controller.



Figure 3-11. HiPer+ Rover Station Setup

1. Set up the Rover station receiver's antenna as described in "HiPer+ Receiver Setup" on page 3-1.
2. Connect your receiver and computer. See "Connecting the HiPer+ and a Computer" on page 2-5 for this procedure.
3. Click **Configuration->Receiver**.
4. Select the **Positioning** tab and set the Position Masks, Elevation mask (degrees) parameter to 15 (Figure 3-8 on page 3-14).

5. Select the **Rover** tab and set the desired Positioning Mode (Figure 3-12).

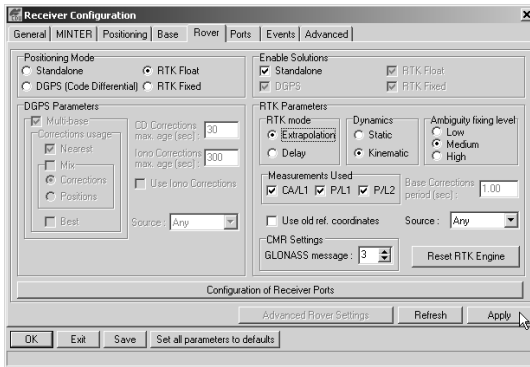


Figure 3-12. Rover Tab Configuration

If you selected RTK Float or RTK Fixed, adjust the following RTK Parameters settings:

- Select Extrapolation or Delay.
 - Extrapolation is for low-latency, high frequency output (≥ 5 Hz) RTK applications. The rover will extrapolate the base station's carrier phase measurement corrections when computing the rover's current RTK position.
 - Delay is for 1 Hz high precision RTK applications. The Rover RTK engine will compute either a delayed RTK position (for the epoch to which the newly received RTCM/CMR message corresponds) or the current stand-alone position (while waiting for new RTCM/CMR messages coming from the base).
- Select the antenna status during RTK, either Static or Kinematic.
- Specify the Ambiguity fixing level (not applicable to RTK Float). The Ambiguity Fixing Level radio buttons govern the process of the RTK engine, fixing

integer ambiguities. The RTK engine uses the ambiguity fix indicator when making decisions whether or not to fix ambiguities. Low, Medium, and High correspond to the indicator's 95%, 99.5% and 99.9% states, respectively. The higher the specified confidence level, the longer the integer ambiguity search time

6. Select the **Ports** tab and set the following parameters for Serial C (Figure 3-13 on page 3-21):
 - Input drop-down list – select desired differential correction format.
 - Period (sec) – leave as is.
 - Baud rate drop-down list – select a baud rate (i.e., the rate at which differential messages will be transmitted from modem to receiver).

**TIP**

For Pacific Crest PDL (UHF) modems, use a 38400 baud rate. For Spread Spectrum 915 MHz/2.4 GHz modems, use a 19200 baud rate.

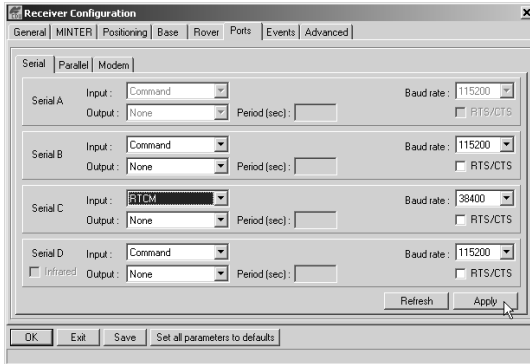


Figure 3-13. Rover Configuration – Ports

7. Click **Apply**.
8. Click **OK** to close the Receiver Configuration screen.
9. On the main screen (Figure 3-14), check the LQ field to ensure the receiver obtains differential corrections. Usually, the receiver will start to output the coordinates of the antenna’s phase center along with the solution type within 10–30 seconds.

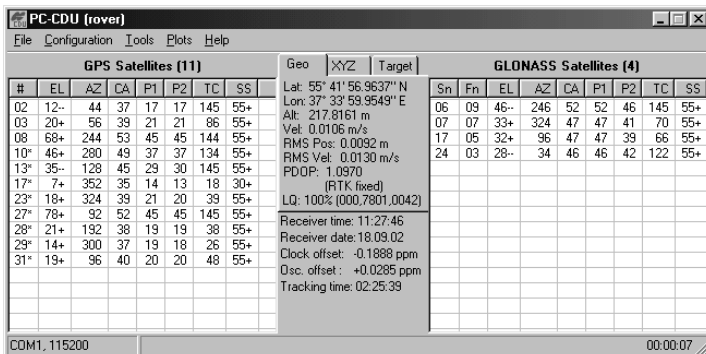


Figure 3-14. PC-CDU Main Screen

The geodetic coordinates displayed on the Geo tab are always computed in WGS84 and have four solution types.

- Standalone – where receiver computes 3D coordinates in autonomous mode without using differential corrections.
- Code differential – where the Rover receiver computes the current relative coordinate in differential mode using only pseudo ranges.
- RTK float – where the Rover receiver computes the current relative coordinates in differential mode using both pseudo ranges and phases; however, with a float solution, the phase ambiguity is not a fixed integer number and the “float” estimate is used instead.
- RTK fixed – where the Rover receiver computes current relative coordinates, with ambiguity fixing, in differential mode.

The LQ field reflects the status of the received differential messages and contains the following information:

- Data link quality in percentage
- Time (in seconds) elapsed since the last received message
- Total number of received correct messages
- Total number of received corrupt messages

If the receiver is not (for some reason) receiving differential corrections, or if none of the ports has been configured to receive differential corrections, the LQ field will either be empty or it will look like this: 100%(999,0000,0000).

Operation

This chapter describes standard HiPer+ operating procedures:

- Using the MINTER
- Downloading HiPer+ files to a computer
- Deleting files from the HiPer+
- Checking and loading OAFs
- Managing HiPer+ memory
- Clearing the NVRAM
- Changing receiver modes
- Checking and loading firmware

Using the MINTER

The MINTER (Figure 4-1) is Topcon's Minimum INTERface used to display and control data input and output.

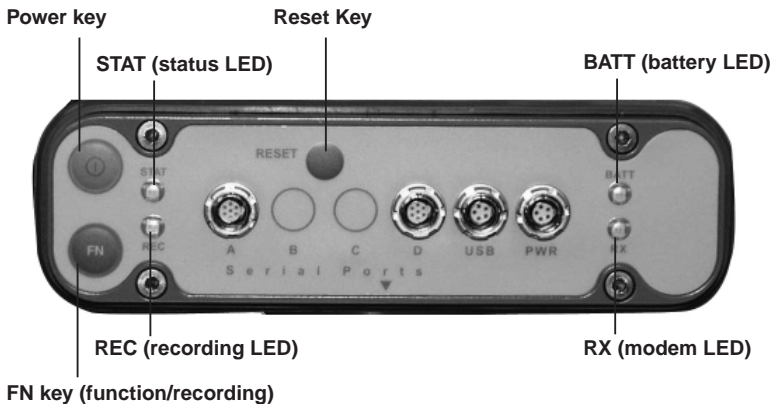


Figure 4-1. MINTER

Power Key

Pressing the **power** key turns the receiver on and off.

Status LED

- When the receiver is on and no satellites are tracked, the STAT LED will blink red.
- When satellites are tracked, the STAT LED will produce one blink for each tracked satellite (green for GPS, orange for GLONASS).

Reset Key

Pressing the **reset** key for about one second causes:

- a hard reset of the receiver.
- the receiver to leave Zero Power Mode and return to Normal Mode.



NOTICE

Only use this procedure if the receiver does not respond to commands or does not charge the internal batteries (is in Zero Power Mode).

FN Key and Record LED

Table 4-1 on page 4-4 summarizes FN key functions and REC LED statuses. See “FN Key Mode parameter” on page 2-28 for information on setting FN key modes.

- Pressing the **FN** key for less than one second switches the receiver between different information modes (normal and extended information), or between static and dynamic post-processing modes, depending on the receiver's configuration.

During the first second of pressing the **FN** key, the REC LED is orange.

- Pressing the **FN** key for more than one and less than five seconds will start/stop data recording.

During data recording the REC LED is green.

If the REC LED is red, the receiver has run out of memory, has a hardware problem, or contains an improper OAF (see “Option Authorized File (OAF)” on page 1-17 for more information on OAFs).

- The REC LED blinks green each time data is written to the internal receiver’s memory.

You set the data recording time interval using PC-CDU. See “Recording Interval parameter” on page 2-25 for information on setting this function.

Each time you turn off or on data recording, either a new file opens or data appends to a particular file. See “Always Append to the File parameter” on page 2-26 and “Files Creation Mode parameter” on page 2-26 for information on setting this function.

- Pressing the **FN** key for more than five and less than eight seconds will turn the baud rate of serial port A to 9600. After about five seconds of pressing the **FN** key, the REC LED becomes red. Release the **FN** key while the REC LED is red (during the next three seconds).

Pressing the **FN** key for more than eight seconds has no impact.

- After loading new firmware or clearing the receiver’s NVRAM, the receiver checks its internal file system.

During this operation, the REC LED flashes orange, and the file system is not accessible for CDU (control display unit) applications or for data recording. This operation may require from fractions of a second to several minutes, depending on the circumstances and the amount of internal memory.

Table 4-1. FN Key Functions and REC LED Status

FN Key	REC LED	Status
When data recording is off, and the FN key is...		
Not pressed	No light	No data recording.
	Orange blink	Internal file system test in progress.
	Red	No free memory; hardware problem with data recording.
Pressed for < 1 second	If FN key mode is “LED blink mode switch”	
	Orange	Release to change information mode.
	If FN key mode is “Occupation mode switch”	
	Orange	No function.
Pressed for 1–5 seconds	If FN key mode is “LED blink mode switch”	
	Green	Release to start data recording (post-processing occupation mode undefined).
	If FN key mode is “Occupation mode switch”	
	Green	Release to start recording (Kinematic or Static post-processing occupation mode)
Pressed for 5–8 seconds	Red	Release to turn serial port A baud rate to 9600 bps.
Pressed for > 8 seconds	No light	No function.

Table 4-1. FN Key Functions and REC LED Status

FN Key	REC LED	Status
When data recording is on, and the FN key is...		
Not pressed	Red	No free memory; hardware problem with data recording.
	If FN key mode is “LED blink mode switch”	
	Green	Data recording started (post-processing occupation mode undefined).
	If FN key mode is Occupation mode switch	
	Green	Data recording started (Kinematic post-processing occupation mode).
	Orange	Data recording started (Static post-processing occupation mode).
Pressed for < 1 second	If FN key mode is “LED blink mode switch”	
	Orange	Release to change information mode.
	If FN key mode is “Occupation mode switch”	
	Orange	Release to toggle between Static and Kinematic post-processing modes.
Pressed for 1–5 seconds	No light	Release to stop data recording.
Pressed for 5–8 seconds	Red	Release to turn serial port A baud rate to 9600 bps.
Pressed for > 8 seconds	No light	No function (data recording still on).

Battery LED

The color of the BATT LED indicates the level of internal battery charge in the HiPer+:

- Green – indicates greater than 85% charge.
- Orange – indicates an intermediate charge.
- Red – indicates less than 15% charge.

The pattern of blinks of the BATT LED also indicates the source of power.

- Solid light – an external power supply is used and the batteries are not being charged.
- Blinking once a second – the batteries are being charged.
- Blinking once every five seconds – the HiPer+ uses the internal batteries for power.
- Not blinking – the receiver is in Zero Power Mode or the internal batteries are completely discharged and no external power is connected.



NOTICE

When the internal batteries have completely discharged and no external power is connected, the receiver will go into Zero Power Mode to prevent the batteries from over discharging.

Modem LED

The color of the RX LED indicates if the modem has power, is receiving signals, or is turned off.

- No light – the modem is off.
- Green – the modem is on, but signal reception has not started.
- Orange – the modem is receiving a signal.

Information Modes

The HiPer+ has two information modes: Normal and Extended Information Mode (EIM).

Normal

In normal mode, the STAT LED indicates the number of tracked satellites and the position's computation status.

Extended Information Mode (EIM)

Extended Information Mode is used for receiver testing purposes. In this mode, the receiver continues to work as usual, but the STAT LED indicates the following "extended" information:

- Delimiter – an easily distinguishable double-blink that shows the overall status of tests performed in EIM. The STAT LED color for delimiter is calculated from the colors of other STAT LED blinks.
 - Orange: at least one blink is orange.
 - Red: no orange blink and at least one red blink.
 - Green: all other cases.
- Sufficient data for position computation.
- GPS S/N ratio is good (see Table 4-2).
- GLONASS S/N ratio is good (see Table 4-2).
- Oscillator's frequency offset is less than three ppm.
- Oscillator's Allan Variance is better than $2.7e-10$.
- Continuous tracking time is more than 15 minutes.

Table 4-2. Signal-to-Noise (S/N) "Good" Ratios

	CA/L1	P/L1	P/L2
GPS	51	39	39
GLONASS	51	49	40

In EIM, the STAT LED blinks seven times per cycle. Each blink could be orange, red, or green.

- Orange – information for test unavailable.
 - Green – receiver passed the test.
 - Red – receiver failed the test.
1. To switch to EIM, press and quickly release (within one second) the **FN** key on the MINTER.
 2. Watch for the delimiter double-blink. With good receiver, antenna, and observation conditions, all blinks should be green within 15 minutes of powering on.
 - Green – ok
 - Orange – wait
 - Red – some tests failed
 3. To switch back to normal, press the **FN** key.

Downloading Files to a Computer

When your survey finishes, you can download your survey files to a computer for storage, post-processing, or backup. Also, the HiPer+ memory holds a finite amount of files and information, so downloading the files to your computer ensures that no files are lost.

You should download files as soon as possible after collecting data at the jobsite. PC-CDU provides a File Manager to download files to your computer and delete files from the HiPer+.

1. Connect your receiver and computer. See “Connecting the HiPer+ and a Computer” on page 2-5 for this procedure.

AND

Enable RTS/CTS handshaking (Figure 4-2 on page 4-9).

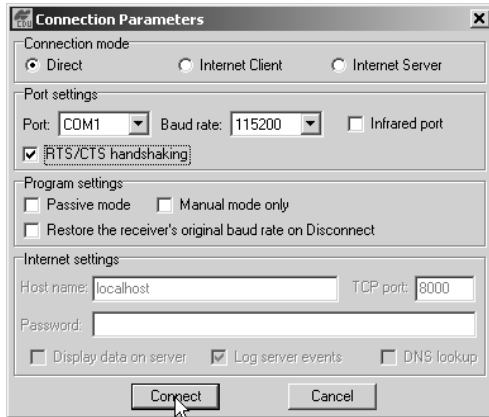


Figure 4-2. Connection Parameters – RTS/CTS Handshaking

2. Click **File->File Manager** (Figure 4-3).

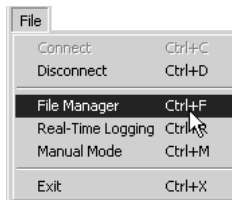


Figure 4-3. File->File Manager

- Click the **Download path** tab on the File Manager dialog box (Figure 4-4).

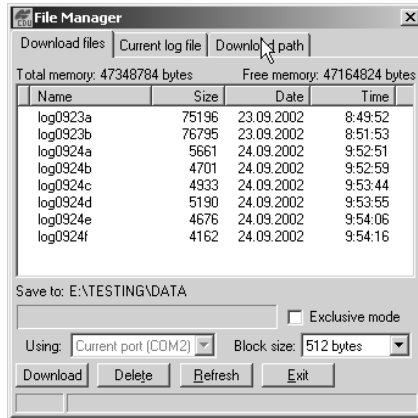


Figure 4-4. Find Files to Download

- Navigate to and open the folder in which to download and store files.

OR

Type a new folder name and click **Create** to create a new folder in which to download and store files. Open this new folder.

- Select the **Download files** tab.
- Select the file(s) you want to download (Figure 4-5 on page 4-11).

To select multiple files, hold down the **Shift** key and click on nonsequential files to select several files at once; or, hold down the **Ctrl** key and click on individual files.

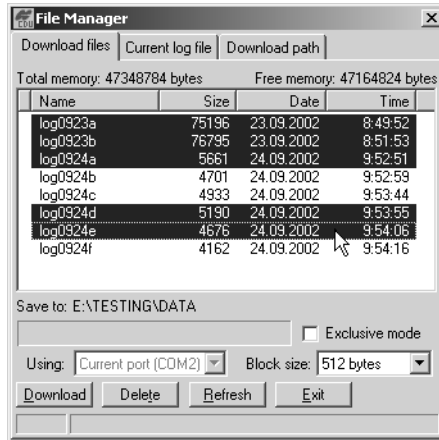


Figure 4-5. Download Files

- Click the **Download** button. During the download, status indicators display next to each file (Figure 4-6).
 - Blue indicator – file in queue for downloading.
 - Red indicator – file currently downloading.
 - Green indicator – file has successfully downloaded.

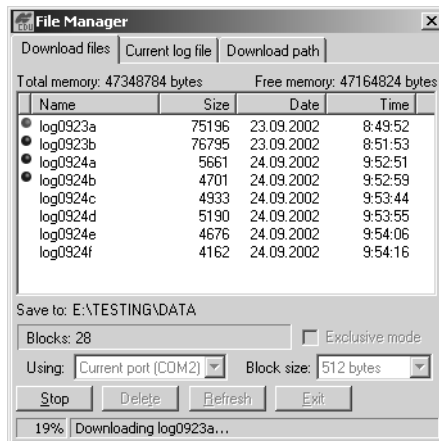


Figure 4-6. Download Files – Status Indicators

8. Once the download completes, click **Exit** on the File Manager dialog box.
9. Continue with other operations.

OR

Click **File->Disconnect**, then **File->Exit** to quit PC-CDU (Figure 4-7).

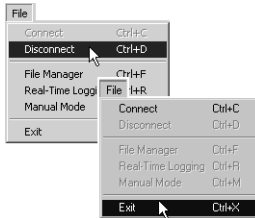


Figure 4-7. Click Disconnect then Exit

Deleting Files

Use the following steps to delete files from your receiver.

1. Connect your receiver and computer. See “Connecting the HiPer+ and a Computer” on page 2-5 for this procedure.

AND

Enable RTS/CTS handshaking (Figure 4-8).

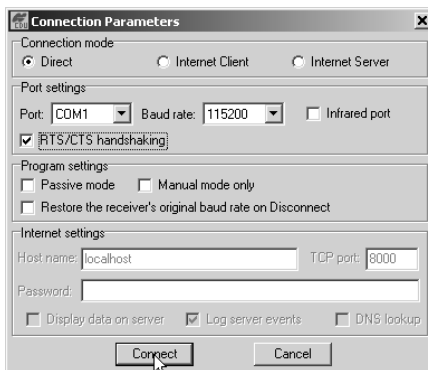


Figure 4-8. Connection Parameters – RTS/CTS Handshaking

- Click **File->File Manager** (Figure 4-9).

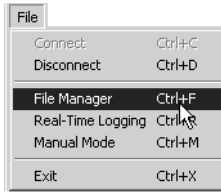


Figure 4-9. File->Manager

- On the **Download files** tab or **Current log files** tab, select the file(s) you want to delete (Figure 4-10).

To select multiple files, hold down the **Shift** key and click on nonsequential files to select several files at once; or hold down the **Ctrl** key and click on individual files.

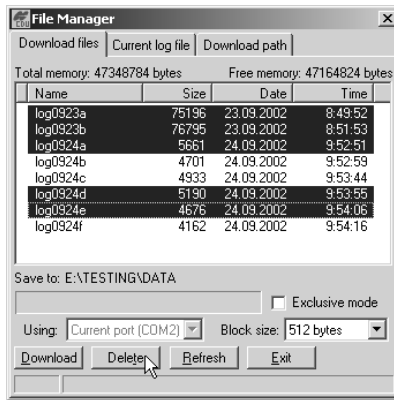


Figure 4-10. Delete Files

- Click **Delete** (Figure 4-10).
 - Click **Yes** at the delete files confirmation dialog box. The selected files are deleted.
 - Click **Exit** on the File Manager screen.
 - Continue with other operations.
- OR

Click **File->Disconnect**, then **File->Exit** to quit PC-CDU (Figure 4-11).

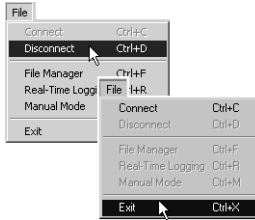


Figure 4-11. Click Disconnect then Exit

Checking an OAF



For a complete list of options and their details, visit the Topcon website.

You can check the status of your receiver’s options, and load any new OAF, using the RS232 cable, a computer, and PC-CDU. Refer to the *PC-CDU User’s Manual* for a more complete description of the PC-CDU software.

1. Connect your receiver and computer. See “Connecting the HiPer+ and a Computer” on page 2-5 for this procedure.
2. Click **Tools->Receiver Options** (Figure 4-12).

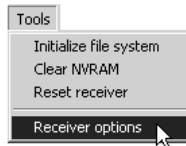


Figure 4-12. Tools->Receiver Options

The Option Manager screen displays (Figure 4-13 on page 4-16) and contains the following information:

- Option name – a name/description of the option
- Current – the current status of the option
- Purchased – if the option is purchased or not
- Leased – if the option is leased or not
- Expiration date – the date the option will be disabled, if applicable

Since Options can be both purchased and leased, the “Current” status of the option displays the currently effective value. Option values can be:

- -1 or “-----” – the firmware version does not support this option.
- 0 – the receiver option is disabled.
- positive integer – the option is enabled.
- yes or no – the option is either enabled or disabled.

Option name	Current	Purchased	Leased	Exp. date
GPS	yes	yes	no	
GLONASS	yes	yes	no	
L1	yes	yes	no	
L2	yes	yes	no	
Cinderella	yes	yes	no	
Position update rate (Hz)	20	20	0	
Raw data update rate (Hz)	20	20	0	
Code differential Base	yes	yes	no	
Code differential Rover	yes	yes	no	
RTK Base	yes	yes	no	
RTK Rover (Hz)	20	20	0	
Memory (Mb)	76	76	0	
Co-Dp Tracking	yes	yes	no	
1-PPS Timing Signal	2	2	0	
Event Markers	2	2	0	
In-Band Int. Rejection	1	1	0	
Multipath Reduction	yes	yes	no	
Frequency Input	yes	yes	no	
Freq. Lock and Output	yes	yes	no	
Serial Port A (Kbps)	460	460	0	
Serial Port B (Kbps)	460	460	0	
Serial Port C (Kbps)	460	460	0	
Serial Port D (Kbps)	460	460	0	
Infrared Port	no	no	no	
Parallel Port	-----	no	no	
Sp.Sp. Freq. Hop.	no	no	no	
Sp.Sp. Direct	no	no	no	
RAIM	yes	yes	no	
Datums support	yes	yes	no	
Magnetic azimuth	yes	yes	no	
Geoid height	yes	yes	no	
Way Point Navigation	-----	yes	no	
WAAS	yes	yes	yes	8/1/2001
OMNISTAR	-----	yes	no	
RTCM Output	3	2	0	
RTCM Input	2	2	0	
CMR Output	1	1	0	
CMR Input	1	2	0	
JPS Output	1	0	0	
JPS Input	2	0	0	

Buttons: Refresh, Load, Stop, Exit

Figure 4-13. Option Manager

- When finished, click **Exit** on the Option Manager screen, then click **File->Disconnect** to prevent conflicts with serial port management.

Loading an OAF

Topcon Positioning System dealers provide customers with OAF files. For any OAF related questions, E-mail TPS at options@topconps.com. Please have your receiver ID number available (see “Checking Firmware Version” on page 4-21).

1. To load a new OAF, follow steps one and two in “Checking an OAF” on page 4-14.
2. Click **Load** at the bottom of the Option Manager screen (see Figure 4-13 on page 4-16).
3. Navigate to the location of the new Option Authorized File. OAFs have .jpo or .tpo extensions and are unique to each receiver (Figure 4-14).

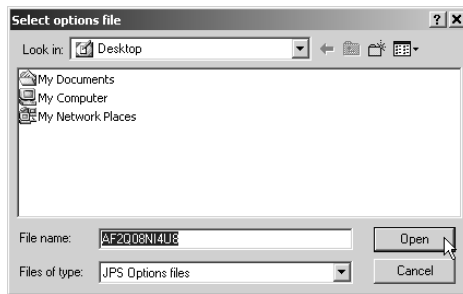


Figure 4-14. Load OAF

4. Select the appropriate file and click **Open** (Figure 4-14). The new receiver option loads onto the receiver and the Option Manager table updates.
5. When finished, click **Exit** on the Option Manager screen, then click **File->Disconnect** to prevent conflicts with serial port management.

Managing HiPer+ Memory

When using the HiPer+ in static or dynamic applications, you may need to know the amount of memory the receiver's log file occupies. The specific memory size depends on the type of data being recorded. Use the formulas below to compute the approximate size of the receiver's log files.

- SS – the estimated size of one epoch of raw data in the receiver's log file (expressed in bytes).
- N – the number of observed satellites per epoch.

When recording only L1 data:

$$SS = 183 + 22 * N$$

When recording L1 and L2 data:

$$SS = 230 + 44 * N$$

Clearing the NVRAM

The receiver's Non-Volatile Random Access Memory (NVRAM) holds data required for satellite tracking, such as ephemeris data and receiver position. The NVRAM also keeps the current receiver's settings, such as active antenna input, elevation masks and recording interval, and information about the receiver's internal file system.

Even though clearing the NVRAM is not a common (nor normally a recommended) operation, there are times when clearing the NVRAM can eliminate communication or tracking problems. Clearing the NVRAM in your HiPer+ can be interpreted as a "soft boot" in your computer.

Firmware versions 2.2p1 or higher keep the PDL modem on after clearing the NVRAM.

After clearing the NVRAM, your receiver will require some time to collect new ephemerides and almanacs (around 15 minutes).

Clearing the NVRAM of your receiver will not delete any files already recorded in your receiver's memory. However, it will reset your receiver to factory default values.

In addition, the NVRAM is used to keep information about the receiver file system. Note that after clearing the NVRAM, the receiver's STAT LED will flash orange for a few seconds indicating that the receiver is scanning and checking the file system.

You can clear the NVRAM using either the MINTER or PC-CDU.

Using MINTER to Clear NVRAM

1. Press the **power** key to turn off the receiver.
2. Press and hold the **FN** key.
3. Press and hold the **power** key for about one second. Release the **power** key while continuing to hold the **FN** key.
4. Wait until the STAT and REC LEDs are green
5. Wait until the STAT and REC LEDs blink orange.
6. Release the **FN** key while the STAT and REC LEDs blink orange.

Using PC-CDU to Clear NVRAM

1. Connect your receiver and computer. See “Connecting the HiPer+ and a Computer” on page 2-5 for this procedure.
2. Click **Tools->Clear NVRAM** (Figure 4-15). The REC LED rapidly flashes green and red; the STAT LED flashes red.

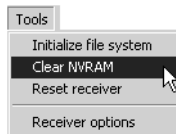


Figure 4-15. Tools->Clear NVRAM

The receiver automatically disconnects once the NVRAM is cleared.

Changing Receiver Modes

The HiPer+ receiver has four modes, two information modes and two power modes:

- Normal Mode
- Extended Information Mode
- Sleep Mode
- Zero Power Mode

See “Information Modes” on page 4-7 for a description of Normal Mode and Extended Information Mode.

Sleep Mode

In sleep mode, the power board and Bluetooth module will continue to draw power from the batteries, causing the batteries to drain over time. Put the receiver in Zero Power Mode to prevent this (see “Zero Power Mode” on page 4-20). Follow these steps to put the HiPer+ into sleep mode.

1. Turn on your receiver.
2. Press the receiver’s **power** key for more than four seconds and less than eight seconds. The STAT LED will be orange. The receiver enters Sleep Mode.
3. Any activity on the RS232 port will turn the receiver on.



NOTICE

If you press the power key for more than 14 seconds, it will be ignored. This protects receiver operation against stuck keys.

Zero Power Mode

When your HiPer+ is off, even in Sleep Mode, the power board will continue to draw power from the batteries. This means that if you fully charge your receiver, turn it off and store it, the receiver will drain its battery power in less than two months. To stop the power board and Bluetooth module

from draining the batteries, put your receiver in Zero Power Mode.

1. Turn on your receiver.
2. Press and hold the **power** key for more than 8 seconds, but less than 14 seconds.
3. Release the **power** key when both LEDs become red. When the LEDs turn off, your receiver will be in Zero Power Mode.
4. Press the **Reset** key for about one second to return to Normal mode.



NOTICE

When the internal batteries have completely discharged and no external power is connected, the receiver will go into Zero Power Mode automatically to prevent the batteries from over discharging.

Checking Firmware Version

You can use PC-CDU to check the firmware version of your receiver.



NOTICE

The HiPer+ receiver should be loaded with firmware version 2.3p1 or later.



CAUTION

Do not use firmware versions 2.3 or older.

1. Connect your receiver and computer. See “Connecting the HiPer+ and a Computer” on page 2-5 for this procedure.
2. Click on **Help->About** (Figure 4-16).



Figure 4-16. Help->About

The About PC-CDU dialog box opens (Figure 4-17).

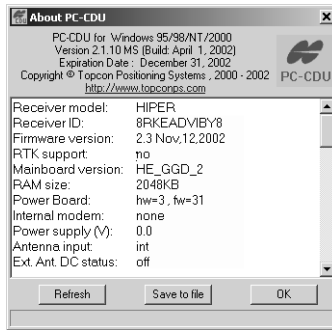


Figure 4-17. About PC-CDU

About PC-CDU lists important information about the different hardware accessories and software properties. This list includes the following, which you will need if you contact TPS or your dealer:

- Receiver model
 - Receiver ID
 - Firmware version
3. When finished, click **OK**, then click **File->Disconnect** to prevent conflicts with serial port management.

Loading New Firmware

Base and Rover receivers must be loaded with the same firmware version. Use the latest firmware version, available for download from the TPS website, to ensure your receiver has access to the most recent updates.

The receiver board and power board must be loaded with firmware from the same package. The Bluetooth module's firmware is independent of the receiver card and power board, and has a different firmware package.

The HiPer+ uses FLoader, a Windows®-based utility, to load firmware onto the receiver and power boards. You can download FLoader to your computer from the TPS website. For more information, refer to the *FLoader User's Manual*, also available on the TPS website.

1. Download and install FLoader, if applicable.
2. Download and unzip the new firmware package(s) to your computer.
3. Connect your receiver and computer. See “Connecting the HiPer+ and a Computer” on page 2-5 for this procedure.
4. Activate FLoader (Figure 4-18).

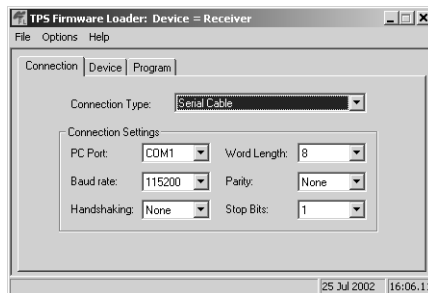


Figure 4-18. FLoader Main Screen

5. On the Connection tab, select the COM port on your computer that connects with your receiver and select its speed (usually 115200) (Figure 4-18).

See the following sections to load the appropriate firmware.

Receiver and Power Board Firmware

Receiver and power board firmware is released as a compressed file that you download and decompress. This file contains the following three files:

- ramimage.ldr – the Receiver board RAM file
- main.ldr – the Receiver board Flash file
- powbrd.ldr – the Power board RAM file



NOTICE

You must load all three files when loading new firmware. These files must come from the same firmware package.

1. In FLoader, select the **Device** tab and set the Device Type as Receiver (Figure 4-19).



Figure 4-19. Get Device Type

2. Click **Get from Device** for device information (Figure 4-19).

3. Select the **Program** tab and set the Capture Method to Soft Break Capture (recommended) (Figure 4-20).

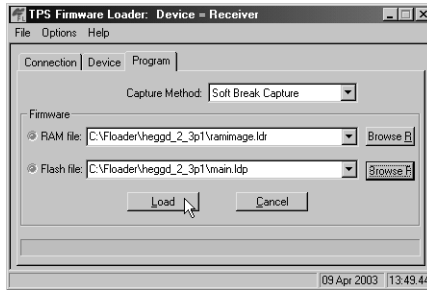


Figure 4-20. Program Tab Settings

4. Browse for and select the receiver board's RAM file and Flash file (Figure 4-20).
5. Click **Load** and wait until 100% of the files load into your receiver.

NOTICE NOTICE

If you selected an incorrect RAM or Flash file, an error message displays at the bottom of the dialog box. Reselect the correct file.

6. Select the **Device** tab and set the Device Type as Receiver's Power Board (Figure 4-21).



Figure 4-21. Set Device Type

7. Click **Get from Device** for device information (Figure 4-21 on page 4-25).
8. Select the **Program** tab and set the Capture Method to Soft Break Capture (recommended) (Figure 4-22).

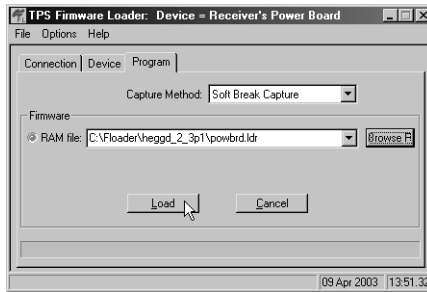


Figure 4-22. Program Tab Settings

9. Browse for and select the Power board's RAM file (Figure 4-22).
10. Click **Load** and wait until 100% of the power board file loads into your receiver.



NOTICE

If you selected an incorrect RAM file, an error message displays at the bottom of the dialog box. Reselect the correct file.

11. Click **File->Exit**.
12. Clear the receiver's NVRAM (see "Clearing the NVRAM" on page 4-18) and update the almanac (see "Collecting Almanacs" on page 2-49) after loading new firmware.

Bluetooth Module Firmware

Bluetooth module firmware is released as a compressed file that you download and decompress. This file contains the following two files:

- btloader.ldr – the Bluetooth module RAM file
- btmain.ldp – the Bluetooth module Flash file



NOTICE

You must load both files when loading new firmware. These files must come from the same firmware package.

1. In FLoader, select the **Device** tab and set the Device Type as Receiver (Figure 4-23).

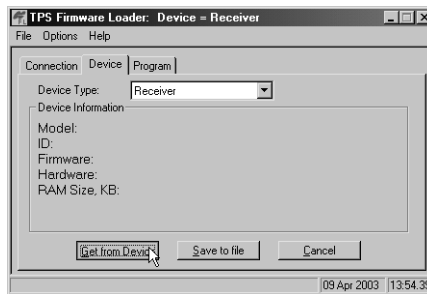


Figure 4-23. Get Device Type

2. Click **Get from Device** for device information (Figure 4-23).

3. Select the **Program** tab and set the Capture Method to Soft Break Capture (recommended) (Figure 4-24).

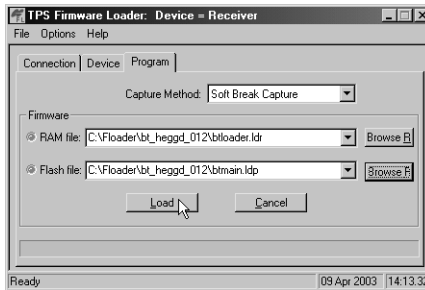


Figure 4-24. Program Tab Settings

4. Browse for and select the Bluetooth module's RAM file and Flash file (Figure 4-24).
5. Click **Load** and wait until 100% of the files load into your receiver (Figure 4-25).

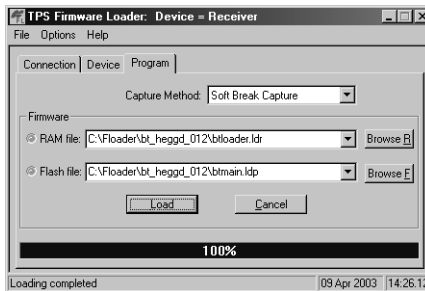


Figure 4-25. Bluetooth Firmware Load Complete



NOTICE

If you selected an incorrect RAM or Flash file, an error message displays at the bottom of the dialog box. Reselect the correct file.

6. Click **File->Exit**.

Troubleshooting

In general, as long as you follow the maintenance and safety instructions provided in this manual, you should have few problems with your HiPer+. This chapter will help you diagnose and solve some common problems you may encounter with your HiPer+ receiver.

Before contacting TPS Customer support about any problems with the receiver, try the following:

- Reset the receiver using PC-CDU (click **Tools->Reset receiver**).
- Restore factory default settings using PC-CDU (click **Configuration->Receiver**, then **Set all parameters to defaults**).
- Clear the NVRAM (see “Clearing the NVRAM” on page 4-18).
- Initialize the file system (click **Tools->Initialize file system**; this will erase all files inside the receiver).



WARNING

Do not attempt to repair equipment yourself. Doing so will void your warranty and may damage the hardware.

Power Problems

All HiPer+ receivers are preset in the factory as “Auto Mode” for both the power and charger. If you want to check these settings,

1. Connect your receiver and computer and run PC-CDU (see “Connecting the HiPer+ and a Computer” on page 2-5).
2. Once connected, click **Configuration->Receiver**.
3. On the General tab, view the Power and Charger fields.
 These fields should be set to Auto. If not, change them to Auto and click **Apply**.



TIP

Clearing the NVRAM will also return the receiver to Auto Mode (see “Clearing the NVRAM” on page 4-18).

Problem	
The receiver does not power up.	
Causes	Solutions
The receiver may be in Zero Power Mode.	Press the Reset key.
If no external power source used, batteries may be discharged.	Connect a fully charged external power source and retry. See “Powering the HiPer+” on page 2-2.
The receiver has an external power source, but internal batteries are discharged.	Charge the batteries overnight. See “Powering the HiPer+” on page 2-2.
The receiver may have a defective charger or defective internal batteries.	If after charging your internal batteries overnight, and your HiPer+ is not powering, contact TPS Customer Support for advice.

Receiver Problems

The following are some of the most commonly encountered receiver problems.

Problem	
The receiver cannot establish a connection to a computer or external controller.	
Causes	Solutions
The receiver's Port B has been disabled, preventing wireless communication between the HiPer+ and a Bluetooth-enabled external device.	<ol style="list-style-type: none"> 1. Connect your receiver and a computer using an RS232 cable (see "Establishing an RS232 Cable Connection" on page 2-7). 2. Click Configuration->Receiver ->General. 3. In the Turn on/off Slots area, enable the Slot 3 (B) check box.
The Daisy Chain mode is still active.	See Step 14 on page 2-38 for the procedure to turn off the Daisy Chain.
The cable is not properly plugged in.	<ul style="list-style-type: none"> • Check that the cable connector is attached to the correct serial port. • Unplug the cable, then securely and properly reconnect it to the receiver. • See "External Components" on page 1-14 and "Connector Specifications" on page B-10 for information on the receiver's connectors.
The cable is damaged.	<ul style="list-style-type: none"> • Use an undamaged cable. • Contact your Dealer to purchase new cables.

<p>The receiver port used for connection is not in Command mode.</p>	<ol style="list-style-type: none"> 1. Connect your receiver and a computer using a free port (see “Connecting the HiPer+ and a Computer” on page 2-5) and start PC-CDU. 2. Click Configuration->Receiver ->Ports. 3. Change the Input for the serial port used for connection to Command.
--	---

Problem

The receiver does not lock on to satellites for a long period of time.

Causes

Solutions

The receiver stores an old almanac.

- Update the almanac.
- See “Collecting Almanacs” on page 2-49.

The antenna cable is damaged.

- Use an undamaged cable.
- Contact your Dealer to purchase new cables.

Problem

The receiver tracks too few satellites.

Causes

Solutions

The elevation mask value is too high (e.g., above 15 degrees).

- Lower the elevation mask.
- See page 2-25 for information on setting the elevation mask.

<p>The survey is conducted near obstructions (tree canopy, tall buildings, etc.).</p>	<ul style="list-style-type: none"> • Check that the Multipath Reduction boxes have been enabled. <ol style="list-style-type: none"> 1. Connect your receiver and a computer and start PC-CDU. See “Connecting the HiPer+ and a Computer” on page 2-5. 2. Click Configuration ->Advanced->Multipath Reduction and enable the two boxes. • Move to an area free of obstructions.
<p>Problem</p>	
<p>The receiver cannot obtain Code Differential and/or RTK solutions.</p>	
<p>Causes</p>	<p>Solutions</p>
<p>An improper receiver status has been chosen.</p>	<ul style="list-style-type: none"> • Choose the correct receiver status. <ol style="list-style-type: none"> 1. Connect your receiver and a computer and start PC-CDU. See “Connecting the HiPer+ and a Computer” on page 2-5. 2. Click Configuration->Base or Configuration->Rover and ensure the receiver has the correct status (kinematic, RTK, or static) • See “Surveying with the HiPer+” on page 3-5 for further information.

<p>The corresponding receiver options may be disabled or expired.</p>	<ul style="list-style-type: none"> • See “Checking an OAF” on page 4-14 for details on how to check current options. • Enable the corresponding receiver options. • Contact your dealer to purchase current receiver options.
<p>There are not enough common satellites. In order to obtain a fixed solution, the Base and Rover should track at least five common satellites.</p>	<ul style="list-style-type: none"> • Ensure that both the Rover and Base receivers use the same, and updated, almanac. See “Collecting Almanacs” on page 2-49. • Check the elevation masks of the Rover and Base receivers; they should be the same. See page 2-25 for information on setting the elevation mask.
<p>Poor satellite geometry (PDOP/GDOP values are too high).</p>	<p>Conduct your survey when PDOP values are low.</p>
<p>The elevation mask is above 15 degrees.</p>	<ul style="list-style-type: none"> • Lower the elevation mask. • See page 2-25 for information on setting the elevation mask.
<p>The receiver and the antenna have a poor connection.</p>	<ul style="list-style-type: none"> • Ensure the cable is undamaged. • Check the cable connector attachment to the receiver. Remove and reattach the cable connector to ensure a secure connection.
<p>The Base and Rover modems are set to different radio channels.</p>	<ul style="list-style-type: none"> • Set the Base and Rover receivers to the same radio channel. • See “Radio Configuration” on page 2-30.

<p>A discrepancy exists between the differential standards used at the Base and Rover receivers.</p>	<p>Ensure the Base and Rover receivers use the same corrections input/output format:</p> <ol style="list-style-type: none"> 1. Connect your receiver and a computer and start PC-CDU. See “Connecting the HiPer+ and a Computer” on page 2-5. 2. Click Configuration->Receiver ->Ports and set the same input/output format for both receivers.
<p>The specified link rate is not compatible with the link rates the modem supports.</p> <p>The link rate is the rate at which data transmits over the RF link.</p>	<ul style="list-style-type: none"> • Change the link rate to that which your modem supports. See the modem’s manual for link rate support information. • See “Radio Configuration” on page 2-30 for checking the current link rate and changing the link rate.
<p>The specified baud rate is not compatible with the baud rates the modem supports.</p> <p>The baud rate is the rate at which the receiver transmits differential messages to the modem and vice versa.</p>	<ul style="list-style-type: none"> • Change the baud rate to that which your modem supports. See the modem’s manual for baud rate support information. • See “Radio Configuration” on page 2-30 for checking the current baud rate and changing the baud rate.
<p>The Digisquelch control at the transmitting modem is set incorrectly.</p>	<p>The Digisquelch control at the transmitting modem should be On and set to Low.</p>

The Digisquelch control at the receiving modem is set incorrectly.	The Digisquelch control at the receiving modem should be On and set to Medium or High.
The modem battery is low.	<ul style="list-style-type: none"> • Attach an external power source to the receiver. See “External Batteries” on page 2-3. • See “Powering the HiPer+” on page 2-2.
Poor bandwidth quality (a high number of jamming signals).	Use another frequency channel for both the Base and Receiver modems.
The distance between the Base and Rover is too far.	<ul style="list-style-type: none"> • Close the distance between the Base and Rover. • Use a radio repeater.
Problem	
The receiver does not start data logging.	
Causes	Solutions
The receiver has no free space for files.	<ul style="list-style-type: none"> • Download receiver files to a computer (if needed) and delete files (see “Downloading Files to a Computer” on page 4-8 and “Deleting Files” on page 4-12). • Use the AFRM feature. See “Automatic File Rotation Mode (AFRM) parameters” on page 2-26.
The receiver has already logged 256 files into the internal memory.	<ul style="list-style-type: none"> • Delete unnecessary files (see “Deleting Files” on page 4-12) • Use the AFRM feature. See “Automatic File Rotation Mode (AFRM) parameters” on page 2-26.

Bluetooth Problems

The following are some of the most commonly encountered error messages. BTCONF reports the error messages in the status bar.

Error Message	
Can't find receiver.	
Causes	Solutions
The receiver is turned off.	Ensure the receiver has power and is turned on.
The cable's connectors are improperly attached.	<ul style="list-style-type: none"> • Check that the cable connector is attached to the correct serial port. • Unplug the cable, then securely and properly reconnect it to the receiver.
The cable is damaged.	<ul style="list-style-type: none"> • Use an undamaged cable. • Contact your Dealer to purchase a new cable.
The COM port the receiver is attached to differs from the one selected in BTCONF.	Ensure that the RS232 cable is attached to the COM port specified in the BTCONF communication port drop-down list. See "Bluetooth Module Configuration" on page 2-43 for details.
The receiver port used for connection is not in Command mode.	<ol style="list-style-type: none"> 1. Connect your receiver and a computer using a free port (see "Connecting the HiPer+ and a Computer" on page 2-5) and start PC-CDU. 2. Click Configuration->Receiver ->Ports. 3. Change the Input for the serial port used for connection to Command.

<p>The settings for Port B may have been changed.</p>	<ul style="list-style-type: none"> • The settings for Port B are: 115200 baud rate, 8 data bits, 1 stop bit, no parity, and no handshaking. • Try enabling RTS/CTS handshaking for Port B. Do not change other settings.
<p>The corresponding receiver options may be disabled or expired.</p>	<ul style="list-style-type: none"> • See “Checking an OAF” on page 4-14 for details on how to check current options. • Enable the corresponding receiver options. • Contact your dealer to purchase current receiver options.

Error Message

Can't find Bluetooth.

Causes	Solution
<p>The receiver's Slot 3 is turned off.</p>	<ol style="list-style-type: none"> 1. Connect your receiver and a computer using an RS232 cable (see “Establishing an RS232 Cable Connection” on page 2-7). 2. Click Configuration->Receiver ->General. 3. In the Turn on/off Slots area, enable the Slot 3 (B) check box.
<p>The Bluetooth module is linked with another device.</p>	<p>Close the connection with the device, then connect to your receiver.</p>

The Bluetooth module's processor is overloaded.	<ol style="list-style-type: none"> 1. Put your receiver in Zero Power Mode. See "Zero Power Mode" on page 4-20 for details. 2. Press the Reset key for about one second to return the receiver to normal mode. 3. Re-connect to the Bluetooth module.
The receiver does not have a Bluetooth module.	Contact your dealer to purchase a Bluetooth enabled receiver.

Error Message

Open COM# port failed: Access is denied.

Causes

Another application uses the computer port dedicated for connection

Solution

- Close the application, then re-connect.
- Connect the receiver via another, unused computer port.

Problem

After searching for available devices, none are discovered.

Causes

The receiver is not receiving power.

Solution

- Check that the receiver is getting power and is turned on.
- Check that the power cable is attached to the correct serial port.
- Unplug the cable, then securely and properly reconnect it to the receiver.
- If the power cable is damaged, contact your Dealer to purchase a new cable.

<p>The receiver's Slot 3 is turned off.</p>	<ol style="list-style-type: none"> 1. Connect your receiver and a computer using an RS232 cable (see "Establishing an RS232 Cable Connection" on page 2-7). 2. Click Configuration->Receiver ->General. 3. In the Turn on/off Slots area, enable the Slot 3 (B) check box.
<p>The devices may be out of acceptable radio range.</p>	<ul style="list-style-type: none"> • Verify that your devices are within acceptable radio range. • Move the devices within radio range.

Problem

Can see the icon for the receiver's Bluetooth module on the computer screen, but cannot connect to it.

Causes

Solution

<p>Device security settings probably differ.</p>	<ul style="list-style-type: none"> • Make sure your Bluetooth enabled devices use the same security settings. • See "Bluetooth Module Configuration" on page 2-43, specifically Figure 2-44 on page 2-47 for details on changing security settings.
<p>Bluetooth module settings may have changed.</p>	<ol style="list-style-type: none"> 1. If you changed settings for your Bluetooth module, remove it from the list of discovered Bluetooth devices using the Bluetooth manager program (supplied with the device used to manage the receiver). 2. Repeat the search.

Creating Scripts

Script files allow you to save manual commands into one file. You can then load this single script instead of typing each individual command. Use the following procedure to create script files.



TIP

For more information on script files, see the *PC-CDU User's Manual*.

1. Connect your receiver and computer. See “Connecting the HiPer+ and a Computer” on page 2-5 for this procedure.
2. Start PC-CDU.
3. Click on **File->Manual Mode**.
4. Click **Edit script**.
5. Navigate to the folder in which you want to save the script file.
6. Type the file name. All files have a .jpc extension.

For example, Daisy_38400.jpc to enable the daisy chain and Daisy_Off.jpc to disable the daisy chain.

7. Click **Yes** to create the file.

8. Type in the appropriate commands, and press **Enter** after each one. See Table A-1 for these commands.

Table A-1. Script Commands

To Create Daisy Chain	To End Daisy Chain
<pre>%% set,dev/ser/c/rate,38400 %% set,dev/ser/c/echo,/cur/term %% set,dev/ser/c/imode,echo %% set,cur/term/eoff,QUIT %% set,cur/term/echo,/dev/null %% set,cur/term/imode,echo %% set,cur/term/echo,/dev/ser/c</pre>	<pre>QUIT %% set,cur/term/imode,cmd %% set,dev/ser/c/echo,/dev/null %% set,dev/ser/c/imode,cmd %% set,dev/ser/c/rate,38400 %% set,cur/term/rate,115200</pre>

9. Click **Save script**.

10. Click **Close editor**.

Once you have created a script file,

1. Click **Load script** on the Manual Mode dialog box.
2. Navigate to the folder that contains your script file.
3. Select the appropriate script file and click **Open**.
4. Press **Enter** or click **Send command** to run the script file.

S Specifications

This TPS product is a 40-channel GPS+ (GPS and GLONASS) receiver with an internal antenna, an internal UHF or GSM radio, a Bluetooth wireless technology module, and a rugged aluminum housing complete with MINTER and cable connectors.

HiPer+ Specifications

Table B-1 lists HiPer+ component details.

Table B-1. HiPer+ Specifications

Component	Details
Receiver Type	
	Euro-112 GGD – set by activating the proper OAF: G – GPS L1 GD – GPS L1/L2 GG – GPS/GLONASS L1 GGD – GPS/GLONASS L1/L2
Tracking Specifications	
Standard Channels	20 L1 GPS, L1/L2 GPS, L1/L2 GLONASS, L1/L2 GPS + L1/L2 GLONASS, WAAS/EGNOS
Optional	Cinderella days (see page B-9 for details)
Tracked Signals	L1/L2 C/A and P Code and Carrier, WAAS/EGNOS

Table B-1. HiPer+ Specifications

Component	Details
Survey Mode	
	Static Kinematic (Continuous, Stop and Go) RTK (Real-time Kinematic) DGPS (Differential GPS)
Survey Accuracy	
Static, Fast Static	For L1+L2 – H: 3mm + 1ppm x D; V: 5mm + 1.4ppm x D For L1 – H: 5mm + 1.4ppm x D; V: 7mm + 1.9ppm x D
Kinematic	For L1+ L2 – H: 10mm + 1.5ppm x D; V: 15mm + 2.0ppm x D For L1 – H: 15mm + 2.0ppm x D; V: 20mm + 2.5ppm x D
RTK	For L1+ L2 – H: 10mm + 1.5ppm x D; V: 15mm + 2.0ppm x D For L1 – H: 15mm + 2.0ppm x D; V: 20mm + 2.5ppm x D
Cold Start Warm Start Reacquisition	< 60 sec < 10 sec < 1 sec
Technology	
	Co-Op tracking Low signal tracking Advanced Multipath mitigation WAAS Adjustable PLL and DLL parameters
Radio Modem	
Spread Spectrum	Internal 915 MHz or 2.4 GHz Spread Spectrum transceiver

Table B-1. HiPer+ Specifications

Component	Details
UHF Radio modem	Internal Rx or External Tx/Rx
GSM modem	Europe and Asia – 900/1800 MHz USA and Canada – 900/1900 MHz
Bluetooth Module specifications	
Type	Class 2
Service classes	Miscellaneous
Supported profiles	LM, L2CAP, SDP, PPP
Frequency Country Code	North America and Europe
Data Storage and Display	
Status Indicators	Four, three-color LED's
Controls	Three function keys
Data Features	
	Up to 20 Hz update rate for real time position and raw data (code and carrier) 10cm code phase and 0.1mm carrier phase precision RTCM SC104 version 2.1, 2.2, and 2.3 I/O Multiple Base RTCM Geoid and Magnetic Variation models RAIM Different DATUMs support Output of grid coordinates CMR and CMR+ support
I/O	
Communication Ports	Up to four high speed RS232 serial ports and a USB port

Table B-1. HiPer+ Specifications

Component	Details
Connectors	Modem Antenna, 1PPS output (optional), Event Marker input (optional), PWR, USB
MINTER	Four external LEDs ON/OFF control input
Antenna	
GPS/GLONASS Antenna	Internal
Antenna Type	Microstrip
Memory	
Internal Memory	Compact flash card (non-removable)
Capacity	Standard – 0 MB Max – 1 G
Logging Time	53 hours (8 MB, 15sec, L1/L2, 7 satellites)
Logging Interval	0.05 to 86400 seconds, depending on purchased options
Power	
Internal battery	Li-ion, 3000 mAh, 7.4 V
Battery size	132 x 35 x 18 (mm)
Battery weight	165 g (1 battery)
Number of built-in batteries	2 batteries
Change battery	non-detachable battery
Operating time	~11.5 hours with UHF PDL Radio ON ~13.5 hours with UHF PDL Radio OFF
External power	1 port

Table B-1. HiPer+ Specifications

Component	Details
Input voltage	6 to 28 V DC (for work) 9 to 28 V DC (for charge battery) Minimum Charge Current ≥ 2 Amp
Consumption	Typical: 2.5W Maximum: 2.7W
On-board	Backup battery for timekeeping and almanac data storage 10 years minimum operation
Environment	
Operating temperature	-30 C° to + 60 C° with batteries
Storage temperature	-40 C° to +75 C° with batteries
Physical	
Enclosure	Aluminum extrusion, rainproof
Color	Topcon Yellow
Dimensions	W:158.5 x H:113 x D:173 mm
Weight	1.72 kg
Antenna	Internal
Battery	Two internal
Controller	External
Mounting	5/8-11
Seals	Silicon (molding in Color)

Table B-1. HiPer+ Specifications

Component	Details
Keys	Three keys: Power – On/Off Function (FN) – start/stop data logging; switch information mode. Reset – receiver hardware reset
LEDs	Four LEDs: STAT – satellite and receiver status REC – record and data status BATT – battery status RX – modem status
NMEA	
NMEA version	Ver. 2.1, 2.2, 2.3, 3.0 output
Messages	GGA, GLL, GNS, GRS, GSA, GST, GSV, HDT, RMC, VTG, ZDA, ROT
Output interval	1Hz standard; 5, 10, 20Hz optional
DGPS	
Correction format	RTCM SC104 Ver 2.1, 2.2, and 2.3
RTCM message type	1, 3, 9, 31, 32, 34; user selectable
Process interval	1Hz standard; 5, 10, 20Hz optional
Output interval for RTCM correction data	1Hz standard; 5, 10, 20Hz optional
Elevation mask	0 to 90 deg (independent of data logging)
Multi-base DGPS	Differential correction select mode: Nearest, Mix, Best (optional)

Table B-1. HiPer+ Specifications

Component	Details
RTK	
Correction format	CMR2/CMR+ (Trimble compatible), RTCM SC104 Ver 2.2 or 2.3
RTCM message type	3, 18, 19, 20, 21, 22; user selectable
Reverse RTK	Will be available in future
Ambiguity initialize	OTF (L1, L1/L2)
Baseline Length	Up to 50km in the morning and evening. Up to 32 km at noon.
Initialize time	5 seconds to 10 min depending on the base line length and multipath conditions
Output interval for CMR/RTCM	1Hz standard; 5, 10, 20Hz optional
Elevation	0 to 90 degrees (independent of data logging)
Solution mode	Delay (synchronization) Extrapolation (not synchronized)
Process interval	1Hz standard; 5, 10, 20Hz optional
Latency	Delay mode – 20 msec to 20 sec (depends on latency which receives corrections data from base receiver) Extrapolation – 20 to 30 msec
Raw Data logging	The receiver can record raw data at another interval during RTK operation
Status	Fix, Float, DOP, Data Link Status, Modem Latency, Common satellites, Percentage of fixing
Results	RTK coordinates, HRMS, VRMS, Covariance Matrix

Table B-1. HiPer+ Specifications

Component	Details
Ambiguity fixing level	Selectable thresholds Low: 95%; Medium: 99.5%; High: 99.9%
PPS Output (optional)	
Number of PPS ports	1
Edge	Rise, Fall
Period	10 to 1000000000 ms
Offset	-500000000 to 500000000 msec -500000 to 500000 nsec
Reference time	GPS, GLONASS, UTC (USNO), UTC (SU)
Event Marker (optional)	
Number of Event Marker ports	1
Edge	Rise, Fall
Reference time	GPS, GLONASS, UTC (USNO), UTC (SU)
Tracking Functions	
Multi-path reduction	Code and Carrier
PLL/DLL setting	Bandwidth, order, adjustable
Co-op tracking loop setting	On/Off, Static Mode, Bandwidth of individual PLL, Bandwidth of common PLL
Smoothing interval	Code and Carrier
WAAS/EGNOS	Standard
Battery Charger (AC Adapter)	
Size	W:60 x L:112 x H:36 mm
Weight	235 g

Table B-1. HiPer+ Specifications

Component	Details
Operating Temperature	0 C° to +40 C°
Storage Temperature	-40 C° to +85 C°
Input	AC 90 to 264 V 1A (110 V AC) 47 to 63 Hz
Output	DC 12 V 2.5 A (30 W)
Connector	Input (AC): Outlet Output (DC): Fisher 5 Pin
Battery charge time	7 hours for Full Charge 6 hours for 90% Charge

Cinderella days is an option that turns a single frequency, GPS receiver into a dual-frequency, GPS+GLONASS receiver for 24 hours every other Tuesday at GPS midnight. Refer to Topcon's website for more information and specific Cinderella day dates.

**NOTICE**

Performance specifications assume a minimum of 6 GPS or 7 GPS/GLONASS satellites above 15 degrees in elevation and adherence to the procedures recommended in this manual.

**NOTICE**

In areas of high multipath, during periods of large PDOP, and during periods of increased ionospheric activity, performance may degrade.

**NOTICE**

Use robust checking procedures in areas of extreme multipath or under dense foliage.

Connector Specifications

This section lists HiPer+ connector details.

Radio (Modem) RF Connector

The Pacific Crest PDL (UHF) modem connector type (Table B-2) is a BNC Bulkhead Jack RF connector with an Applied Engineering Product part number of 6501-7051-003.

Table B-2. Pacific Crest PDL (UHF) Modem Connector Specifications

Type	Signal Name	Dir	Details
BNC	Modem I/O	I	RF input from PDL antenna

Spread Spectrum modem (TPS) or GSM modem connector type (Table B-3) is a TNC RF connector.

Table B-3. Spread Spectrum/GSM Modem Connector Specifications

Type	Signal Name	Dir	Details
TNC	Modem I/O	I/O	RF input from modem antenna

Power Connector

The power connector (Figure B-1) is a sealed receptacle, 5 pin, ODU part number G80F1C-T05QF00-0000.



Figure B-1. Power Connector

Table B-4 gives power connector specifications.

Table B-4. Power Connector Specifications

Number	Signal Name	Dir	Details
1	Power_INP	P	6 to 28 volts DC input
2	Power_INP	P	6 to 28 volts DC input
3	Power_GND	P	Ground, power return
4	Power_GND	P	Ground, power return
5			Not used

Serial C-RS232 Connector

For ports A and D. The RS232 connectors (Figure B-2) are sealed receptacle, 7 pin, ODU part number G80F1C-T07QC00-0000.



Figure B-2. RS232 Connector

Table B-5 gives the RS232 cable connector specifications.

Table B-5. RS232 Connector Specifications

Number	Signal Name	Dir	Details
1	Power_OUT	P	Power Output ($I < 0.2$ A)
2	GND	-	Signal ground
3	CTS	I	Clear to send
4	RTS	O	Request to send
5	RXD	I	Receive data
6	TXD	O	Transmit data
7			Not used

USB Connector

The USB connector is a sealed receptacle, 5 pin, ODU part number G80F1C-T05QF00-0000 (Figure B-3).



Figure B-3. USB Connector

Table B-6 gives the USB connector specifications.

Table B-6. USB Connector Specifications

Number	Signal Name	Dir	Details
1			Not used
2	USB_PWR	P	Bus power
3	GND	-	Ground
4	USB D+	I/O	Data plus
5	USB D-	I/O	Data minus

Notes:

B-14

Safety Warnings

General Warnings



NOTICE

To comply with RF exposure requirements, maintain at least 20cm between the user and the GSM radio modem.



WARNING

The HiPer+ is designed for survey and survey related uses (i.e., surveying coordinates, distances, angles and depths, and recording such measurements). This product should never be used:

- Without the user thoroughly understanding this manual.**
- After disabling safety systems or altering the product.**
- With unauthorized accessories.**
- Without proper safeguards at the survey site.**
- Contrary to applicable laws, rules, and regulations.**



DANGER

THE HiPER+ SHOULD NEVER BE USED IN DANGEROUS ENVIRONMENTS. USE IN RAIN OR SNOW FOR A LIMITED PERIOD IS PERMITTED.

Internal Battery Pack Warnings



DANGER

NEVER ATTEMPT TO OPEN THE HiPER+ CASING OR REPLACE THE BATTERIES! LITHIUM-ION BATTERIES CAN BE DANGEROUS IF MISHANDLED!



DANGER

DO NOT INCINERATE OR HEAT BATTERY PACK ABOVE 212 DEGREES FAHRENHEIT (100 DEGREES CELSIUS). EXCESSIVE HEAT CAN CAUSE SERIOUS DAMAGE AND POSSIBLE EXPLOSION.



WARNING

Tampering with the internal batteries by end users or non-factory authorized technicians will void the receiver's warranty.

- Do not attempt to open the battery pack or replace it.**
- Do not disassemble the battery pack.**
- Do not charge in conditions different than specified.**

- Do not use other than the specified battery charger.
- Do not short circuit.
- Do not crush or modify.



CAUTION

When plugging the power/charger cable into an outlet, use a grounded, main socket outlet.

Usage Warnings



CAUTION

If this product has been dropped, altered, transported or shipped without proper packaging, or otherwise treated without care, erroneous measurements may occur.

The owner should periodically test this product to ensure it provides accurate measurements.

Inform TPS immediately if this product does not function properly.



CAUTION

Only allow authorized TPS warranty service centers to service or repair this product.

UHF Radio Usage



NOTICE

Many countries require a license for radio users (such as the United States). Be sure you comply with all local laws while operating a UHF radio.

Surveying in RTK mode has made UHF the most popular choice for communications between Base and Rover receivers. The user should know the strengths and weaknesses of this technology to get the best use out of your HiPer+ receiver.

The quality and strength on the UHF signals translates into the range of your UHF communications. The following concepts will help you get the most out of your UHF based communication systems:

1. Your system's range will greatly depend on the local conditions.

Topography, local communications and even meteorological conditions play a major role in the possible range of your RTK communications. A 35 Watt base radio will allow your HiPer+ receiver to reach distances of up to 12 miles using the standard antenna, depending on local conditions. Distances in the order of 4 to 7 miles (6 to 11 km) can be easily reached.



TIP

Use a scanner to find clear channels for communication.

2. Your system's range will increase by adjusting the antenna of your Base station in one of the following ways.
 - Ensure the Base radio has a fully charged battery.
 - Use directional antennas and/or repeaters to increase your system's range. Directional antennas concentrate the signal power within a more narrow direction, significantly increasing the range of your system.
 - Check out the TPS accessory line for various items to raise your Base radio.

Warranty Terms

TPS laser and electronic positioning equipment are guaranteed against defective material and workmanship under normal use and application consistent with this Manual. The equipment is guaranteed for the period indicated, on the warranty card accompanying the product, starting from the date that the product is sold to the original purchaser by TPS' Authorized Dealers.¹

During the warranty period, TPS will, at its option, repair or replace this product at no additional charge. Repair parts and replacement products will be furnished on an exchange basis and will be either reconditioned or new. This limited warranty does not include service to repair damage to the product resulting from an accident, disaster, misuses, abuse or modification of the product.

Warranty service may be obtained from an authorized TPS warranty service dealer. If this product is delivered by mail, purchaser agrees to insure the product or assume the risk of loss or damage in transit, to prepay shipping charges to the warranty service location and to use the original shipping container or equivalent. A letter should accompany the package furnishing a description of the problem and/or defect.

The purchaser's sole remedy shall be replacement as provided above. In no event shall TPS be liable for any damages or other claim including any claim for lost profits, lost savings or other incidental or consequential damages arising out of the use of, or inability to use, the product.

-
1. The warranty against defects in Topcon battery, charger, or cable is 90 days.

Notes:

E-2

Index

A

- AFRM **2-26**
- Almanac **2-49**
 - broadcast data **1-4**
 - collecting **2-49**
 - ephemerides **1-4**
- Always append to file **2-26**
- Antenna **1-6, 1-10**
 - see also* External antenna
 - see also* Internal antenna
 - offsets **3-3**
 - setup **3-1**
 - internal **3-2**
- Antenna reference point **3-2**
 - see also* ARP
- ARP **1-14, 3-2, 3-3**
- Automatic file rotation mode **2-26**

B

- Back panel **1-16**
- Base
 - configuration **3-5–3-8**
 - setup **3-12–3-17**
- BATT LED **2-22**
 - blink pattern **2-22, 4-6**
 - green **4-6**
 - orange **4-6**
 - red **4-6**
- Battery **1-13**
 - charger **1-13, 2-4**
 - status **2-22**

- Baud rate
 - see* Set baud rate
- Bluetooth **1-10, 2-5, 2-6**
 - configuration **2-44**
 - port B settings **1-16, 2-6, 5-10**
 - security **2-47**
- Bluetooth module file **4-27**
- BTCONF **1-8, 2-43**
 - remove **2-44**
 - uninstall **2-44**

C

- Cables **1-7**
- Change baud rate **4-3**
 - see also* Set baud rate
- Charge internal batteries **2-21**
- Check firmware version **4-21**
- Checking OAFs **4-14**
- Clear NVRAM **4-18, 4-26**
 - w/ MINTER **4-19**
 - w/ PC-CDU **4-19**
- Collecting data **3-4**
- Components **1-10, 1-14**
 - back panel **1-16**
 - front panel **1-15**
- Configure
 - see also* Survey configuration
 - Bluetooth module **2-44**
 - MINTER **2-23**
 - power **2-15**
 - radio **2-30**
 - receiver **2-10**
 - using PC-CDU **2-10**

- Connect receiver to computer
 - using Bluetooth **2-6**
 - using PC-CDU **2-8**
 - using RS232 cable **2-7, 2-44**
 - using USB cable **2-7**
- Connect receiver to controller **2-40**

D

- Daisy chain **2-31, A-1**
- Data recording auto-start **2-28**
- Delete files **4-12–4-14**
- Differential corrections
 - LQ field **3-21**
- Download
 - BTCONF **2-43**
 - files **4-8–4-12**
 - firmware **4-24–4-26, 4-27–4-28**
 - FLoader **4-23**
 - indicators **4-11**
 - OAFs **4-17**
- Dual frequency **1-2**

E

- EIM **4-7–4-8**
- Elevation mask **2-25**
- External components **1-14**
- External power **2-3, 2-4**

F

- File creation mode **2-26**
- File name prefix **2-11, 2-25**
- Files
 - Bluetooth module **4-27**
 - delete **4-12–4-14**
 - download **4-8–4-12**
 - flash **4-24, 4-25, 4-27, 4-28**
 - power board **4-24, 4-26**
 - RAM **4-24, 4-25, 4-27, 4-28**

select **4-10**

- Firmware
 - check version **4-21**
 - files **4-24, 4-27**
 - load **4-23, 4-24–4-26, 4-27–4-28**
- Flash file **4-24, 4-25, 4-27, 4-28**
- FLoader **1-8, 4-23**
- FN key **4-2**
 - change baud rate **4-3**
 - data recording **4-2**
 - information modes **4-2**
- FN key mode **2-28**
 - see also* FN key

G

- GPS+ **1-2**
- GSM
 - configuration **2-40–2-43**
 - safety **C-1**

I

- Information mode
 - see also* Receiver modes
 - EIM **4-7**
 - extended **4-7**
 - normal **4-7**
 - sleep **4-20**
 - STAT LED **4-7**
 - zero power **4-20**
- Initial data collection dynamic mode **2-28**
- Internal antenna **1-10**
 - offset **3-2, 3-3**
 - setup **3-2**
- Internal batteries **2-2**
 - charge **2-21**
 - status **2-22**
- Internal components **1-10**
- Internal GSM **2-42**

Internal radio **1-10, 2-30**
 configuration **2-30**

K

Kinematic continuous survey **3-11**
 configuration **3-11**

Kinematic survey **3-9**
see also Kinematic continuous
 survey
see also Stop and Go survey

L

LED

BATT **4-6**
 REC **4-2**
 RX **4-6**
 STAT **4-2**

Literature **1-9**

Load firmware **4-24–4-26,**
4-27–4-28

LQ field **3-22**

M

Manual mode **2-31**
 commands **2-31, 2-39**

Manuals **1-9**
 online **1-9**

Memory **4-18**
 size of log files **4-18**

Minimum INTERFACE
see MINTER

MINTER **1-15**
 configuration **2-23**
 functions **2-23**
 parameters **2-24, 2-25–2-28**
 using **4-1**

Modem
see Internal radio
 configuration **2-30**

LED **4-6**
see also RX LED

N

Normal mode **4-7**
 NVRAM **1-4, 4-18**
 clear **4-18, 4-26**
 w/ MINTER **4-19**
 w/ PC-CDU **4-19**

O

OAF **1-17**

OAFs **1-17**
 check **4-14**
 load **4-17**

Offsets **3-3**
 horizontal **3-3**
 internal antenna **3-2**
 vertical **3-3**

Option authorized files
see OAFs

P

Pacific Crest **2-30**
 logo menu **2-33**

Package contents
 cables **1-7**
 literature **1-9**
 RTK **1-7**
 software **1-8**

PC-CDU **1-8, 2-10**
 configuration **2-10–2-39**
 manage power **2-15**
 save settings **2-10**

PDL **1-11**
 configuration **2-32**
 software **1-8, 2-30**
 PDLCONF **1-8, 2-30**
 program **2-32**

- Power **2-2**
 - board **1-12**
 - charger **2-4**
 - external **2-3**
 - internal **2-2**
 - management **2-15, 2-16–2-20**
- Power board file **4-24, 4-26**

R

- Radio configuration **2-30**
- RAM file **4-24, 4-25, 4-27, 4-28**
- Range **D-1**
- Real-time kinematic **1-2**
 - see also* RTK **1-2**
- REC LED **4-2**
 - green **4-2**
 - orange **4-2**
 - red **4-2, 4-3**
- Receiver modes **4-20**
 - see also* EIM
 - see also* Normal Mode
 - extended **4-7–4-8**
 - sleep mode **4-20**
 - zero power **4-20**
- Receiver setup
 - w/ internal antenna **3-2**
- Recording interval **2-25**
- Reset key **4-2**
- Rover
 - configuration **3-9–3-10, 3-11–3-12**
 - setup **3-17, 3-17–3-21**
- RTK **1-2, 3-12**
 - base station setup **3-12**
 - w/ external modem **3-17**
 - package contents **1-7**
 - rover setup **3-17**
- RX LED **4-6**
 - blink pattern **4-6**
 - green **4-6**
 - no light **4-6**

- orange **4-6**

S

- Satellites
 - in view **1-4**
- Scripts **2-32**
 - create **A-1**
- Security parameters **2-47**
- Serial number **1-14, 3-7**
- Set baud rate
 - 115200 **1-16, 2-6, 2-8, 4-23, 5-10**
 - 19200 **3-16, 3-20**
 - 38400 **2-30, 2-36, 2-38, 3-16, 3-20**
 - 9600 **4-3**
- SHMM **1-16, 1-17, 3-3**
- Slant height measure mark
 - see* SHMM
- Sleep mode **4-20**
- Software **1-8**
 - ActiveSync **1-8**
 - BTCONF **1-8**
 - FLoader **1-8, 4-23**
 - PC-CDU **1-8, 2-10–2-39**
 - PDLCONF **1-8, 2-30, 2-32–2-38**
 - Pinnacle **1-8**
 - radio configuration **1-8, 2-30**
- Start/stop data recording **4-2**
- STAT LED **4-2, 4-7**
 - blink pattern **4-2, 4-7–4-8**
 - EIM **4-7**
 - green **4-2**
 - orange **4-2**
 - red **4-2**
- Static survey **3-5–3-8**
 - configuration **3-6**
 - MINTER parameters **3-6**
- Stop and Go survey **3-9**
 - configuration **3-9**

- Survey configuration
 - kinematic continuous **3-11**
 - static **3-6**
 - stop and go **3-9**
- Surveying
 - kinematic **3-9**
 - kinematic continuous **3-11**
 - RTK **3-12**
 - static **3-5-3-8**
 - stop and go **3-9**
- Switch information modes **4-2**
- System range **D-1**

T

- Test **1-5, 4-7, C-3**
 - EIM **4-7-4-8**
- Trajectory survey
 - see* Kinematic continuous survey
- Turn on/off **2-4**

U

- UHF **D-1**
- Uninstall
 - BTCONF **2-44**
- USB connection parameters **2-9**
- USB driver **2-7**

W

- Warnings **C-1**
 - battery pack **C-2**
 - general **C-1**
 - usage **C-3**

Z

- Zero power mode **4-20, 4-21**
 - reset key **4-2**



TOPCON



Topcon Positioning Systems, Inc.

5758 W. Las Positas Blvd.

Pleasanton, California U.S.A.

Phone: 925 • 460 • 1300

Fax: 925 • 460 • 1315

© 2003 Topcon Corporation. All rights reserved.

No unauthorized duplication.

P/N: 7010-0526 Rev. A Printed in U.S.A. 4/03 250