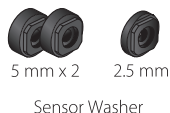
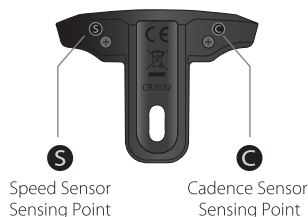
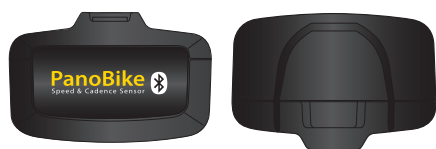




Sync to PanoBike App and other Apps with *Bluetooth®* Smart (BLE 4.0) connection program.

GB



SPECIFICATION

Tech: *Bluetooth®* Smart super low energy technology
 Battery Lifetime (approx): 1800 hours (5 years with 1 hr/ day use)
 Battery: CR2032 x 1 pc (included)
 Transmission Range: <10 meter (33 ft)
 Waterproof: IPX 7
 Weight: 16 g / 0.56 oz
 Operating temperature: -10°C ~ 50°C (14°F~122°F)

* Tool needed: 2.5 mm Allen Key

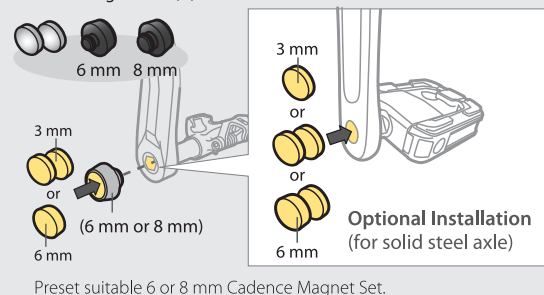
Cadence Magnet Set (A) for pedal axle hexagon socket	Cadence Magnet Set (B) for crankarm	Wheel Magnet Set
6mm 8mm Cadence Magnet Holder	Rubber Pad Cadence Magnet Holder Zip Tie	Screw Driver
Cadence Magnet 3 mm 6 mm		

INSTALLATION

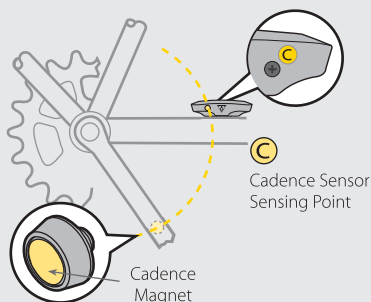
TIPS : Proper distance between Sensor and Magnet : < 25 mm

1
OPTION A

Cadence Magnet Set (A)

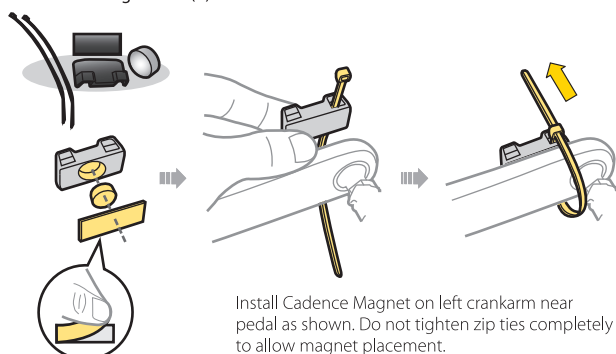


Preset suitable 6 or 8 mm Cadence Magnet Set.

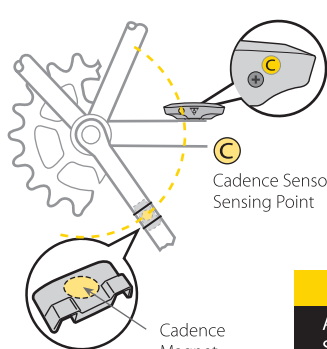


OPTION B

Cadence Magnet Set (B)



Install Cadence Magnet on left crankarm near pedal as shown. Do not tighten zip ties completely to allow magnet placement.



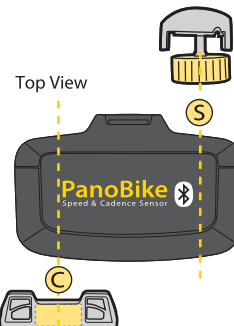
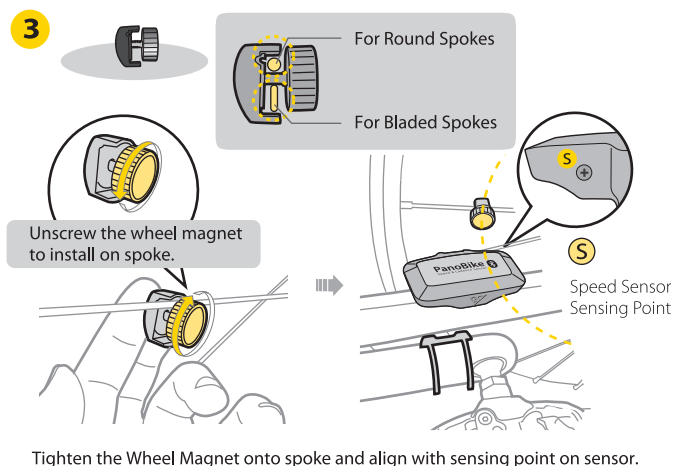
IMPORTANT NOTE

Align Cadence Magnet with Cadence Sensor Sensing Point as shown to insure magnet does not interfere with Speed Sensor.

2



3

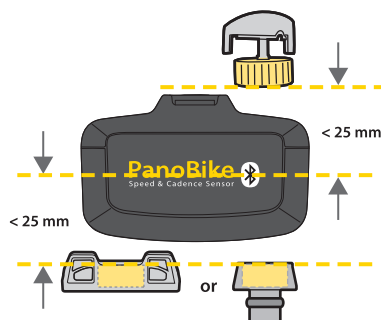


IMPORTANT NOTE

Align Wheel Magnet with Speed Sensor Sensing Point as shown to insure magnet does not interfere with Cadence Sensor.

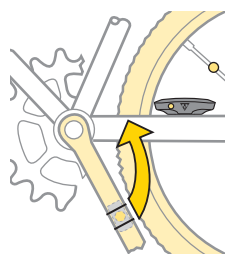


4 Check the mounting position



If after adjustment the wheel magnet does not meet the recommended distance, the extra cadence magnet may be added to the wheel magnet.

5 Pair with PanoBike App



Add a new device



Add a new device

CONNECTED

Pair with PanoBike App

Tap "Add a new device" and turn the crankarm counterclockwise several revolutions to make sure the Current Cadence (CAD) and Current Speed (SPD) connect correctly without interfering with each other. Input your name and wheel circumference and save all data. When "connected" appears, the pairing is successful. Tighten all zip ties and wheel magnet after successful pairing.

TOPEAK PANOBike APP



The ultimate cycling performance app that utilizes your smartphone's powerful *Bluetooth®* Smart capabilities and transforms it into your bike computer, personal training and health management device. This app combines the functions of phone, cycle computer, GPS, music player, camera, and heart rate monitor (requires purchase of separate PanoBike Heart Rate Monitor) into one program that allows you to have loads of fun on your bike ride.

Sync to PanoBike App and other Apps with *Bluetooth®* Smart (BLE 4.0) connection program.



(Download for Free)



(Download for Free)

FCC INFORMATION

This device complies with Part 15 of the FCC Rules. Operation is subject to the following two conditions:

1. This device may not cause harmful interference.
2. This device must accept any interference received, including interference that may cause undesired operation.

Note: This equipment has been tested and found to comply with the limits for a Class B digital device, pursuant to part 15 of the FCC Rules. These limits are designed to provide reasonable protection against harmful interference in a residential installation. This equipment generates, uses and can radiate radio frequency energy and, if not installed and used in accordance with the instructions, may cause harmful interference to radio communications. However, there is no guarantee that interference will not occur in a particular installation. If this equipment does cause harmful interference to radio or television reception, which can be determined by turning the equipment off and on, the user is encouraged to try to correct the interference by one or more of the following measures:

- Reorient or relocate the receiving antenna.
- Increase the separation between the equipment and receiver.
- Connect the equipment into an outlet on a circuit different from that to which the receiver is connected.
- Consult the dealer or an experienced radio/TV technician for help.

Caution: Any changes or modifications not expressly approved by the party responsible for compliance could void the user's authority to operate this equipment

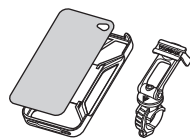
RELEVANT ACCESSORIES

PanoBike Heart Rate Monitor



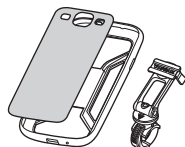
Art No. TPB-HRM01

RideCase



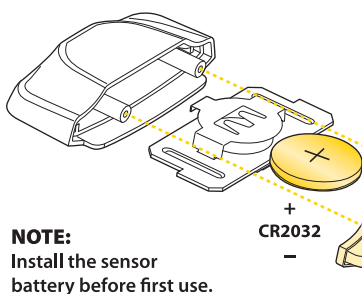
Art No. TT9832B, TT9832W
(works with iPhone 4/ 4S)
TT9833B, TT9833W
(works with iPhone 5/ 5S)

RideCase
(Works with New HTC One, Samsung Galaxy S3/ S4)



Art No. TT9835B (Black) TT9836B (Black)
TT9835W (White) TT9836W (White)
TT9837B (Black) TT9837W (White)
TT9835P (Pink)

CHANGING BATTERY



Operation Time up to
1800 hrs. / 5 yrs.

* 5 years with 1hr/ day use.

NOTE:
Install the sensor battery before first use.

* *Bluetooth®* is a registered trademark of Bluetooth SIG, Inc.
* iPhone is a registered trademark of Apple Inc.
* App Store is a service mark of Apple Inc.

CAUTION

1. The Sensor and hardware can be used in the rain but should not be used under water.
2. Do not disassemble the Sensor and hardware.
3. Check relative positions and gap between sensor and magnets periodically.
4. Do not use harsh chemicals to clean the Sensor and hardware.
5. Remember to pay attention to the road while riding.

TROUBLE SHOOTING

1. Why can't I connect the sensor with PanoBike App?
 - Make sure the *Bluetooth®* system on your smartphone has been enabled.
 - Is the battery in the sensor exhausted? Replace battery.
2. Display is slow?
 - If the temperature is below -10°C(14°F), the display will react slowly. Normal operation will return when temperature rises.
3. No current speed or incorrect data?
 - Make sure the magnets are aligned and are the correct distance from the sensor as the crankarm and wheel rotate.

WARRANTY

2-year Warranty: All electronic and mechanical components against manufacturer defects only. Batteries are not covered under any implied warranty.

Warranty Claim Requirements

To obtain warranty service, you must have your original sales receipt. Items returned without a sales receipt will assume that the warranty begins on the date of manufacture. All warranties will be void if the product is damaged due to user crash, abuse, system alteration, modification, or used in any way not intended as described in this manual.

* The specifications and design are subject to change without notice.

Please contact your Topeak dealer with any questions.

For USA customer service call: 1-800-250-3068
www.topeak.com

