

AR5001 Client Utility Help PA3299U-1MPC

Wireless LAN Card Features	2
Card Specifications	3
Introduction	5
System Requirements	5
Package Contents	5
Profile Management	6
Add a New or Modify a Configuration Profile	6
Ad Hoc Mode Profile Configuration	8
Access Point Mode Profile Configuration	8
Remove a Configuration Profile	10
TCP/IP Configuration	10
Profile Management	11
Zero Configuration	11
Security Tab	13
Define Pre-Shared Encryption Keys	13
Check the Status Information or Diagnostics	15
Current Status	15
Driver Information Button	16
Diagnostics	16
Profile Management: Available APs and Ad Hoc Networks List	17
Action Menu	19
Country Code Selector	19
Tray Icon	21
Display Settings	22
Updating the NDIS Driver	23
Information sheet	24

Wireless LAN Card Features

The Wireless LAN Card is a wireless network card that fits into a Mini-PCI TypeIII slot.

Wireless LAN Card Types

The Wireless LAN Card is a wireless network card that complies with the IEEE 802.11 standard on wireless LANs (Revision B, G), Turbo Mode. Revision G supports data rates up to 54 Mbit/s. Revision B supports data rates up to 11 Mbit/s. Turbo Mode supports data rates up to 108 Mbit/s.

- Wi-Fi (Wireless Fidelity) certified by the Wi-Fi Alliance. This means that your Wireless hardware will communicate with other vendors' IEEE 802.11 compliant wireless LAN product. The 'Wi-Fi CERTIFIED' logo is a certification mark of the Wi-Fi Alliance.
- Fully compatible with any other wireless LAN system based on Direct Sequence Spread Spectrum (DSSS)/ Orthogonal Frequency Division Multiplexing (OFDM) radio technology that complies with the "IEEE 802.11 standard on wireless LANs (Revision B or G).

Wireless LAN Cards

The Wireless LAN Card supports the following wireless LAN features:

- Automatic Transmit Rate Select mechanism in the transmit range of 54,48,36,24,18,12, 9 and 6 Mbit/s. (Revision G)
- Automatic Transmit Rate Select mechanism in the transmit range of 11, 5.5, 2 and 1 Mbit/s. (Revision B)
- Automatic Transmit Rate Select mechanism in the transmit range of 108,96,72,48,36, 24,18 and 12 Mbit/s. (Turbo Mode)
- Frequency Channel Selection (2.4GHz:Revision B, G).
- Roaming over multiple channels.
- Card Power Management.
- Wired Equivalent Privacy (WEP) data encryption, based on 152bit encryption algorithm.
- Advanced Encryption Standard (AES) data encryption, based on 256bit encryption algorithm.

Card Specifications

Form Factor	- Mini PCI TypeIII
Capability	- IEEE 802.11 Standard for Wireless LANS Wi-Fi (Wireless Fidelity) certified by the Wi-Fi Alliance.
Network Operating System	- Microsoft Windows® Networking
Media Access Protocol	- CSMA/CA (Collision Avoidance) with Acknowledgment (ACK)
Data Rate	- 54/48/36/24/18/12/9/6 Mb/s (Revision G) - 11/5.5/2/1 Mb/s (Revision B) - 108/96/72/48/36/24/18/12 Mb/s (Turbo Mode)

Radio Characteristics

Radio Characteristics of Wireless LAN Cards may vary according to:

- country/region where the product was purchased
- Type of product

Wireless communication is often subject to local radio regulations. Although Wireless LAN Wireless networking products have been designed for operation in the license-free 2.4GHz band, local radio regulations may impose a number of limitations to the use of wireless communication equipment.

NOTE: Refer to the flyer "Information to the User" for regulatory information that may apply in your country/region.

R-F Frequency	-Band2.4GHz (2400-2483.5 MHz) (Revision B, G, Turbo Mode)
Modulation Technique	-DSSS-CCK, DSSS-DQPSK, DSSS-DBPSK (Revision B) -OFDM-BPSK, OFDM-QPSK, OFDM-16QAM, OFDM-64QAM (Revision G, Turbo Mode)

The range of the wireless signal is related to the Transmit Rate of the wireless communication. Communications at lower Transmit range may travel larger distances.

- The range of your wireless devices can be affected when the antennas are placed near metal surfaces and solid high-density materials.
- Range is also impacted due to "obstacles" in the signal path of the radio that may either absorb or reflect the radio signal.

Supported Frequency Sub-bands

Subject to the radio regulations that apply in your country, your Wireless LAN Card may support a different set of 2.4GHz channels.

Consult your Authorized Wireless LAN or TOSHIBA Sales office for information about the radio regulations that apply in your country/region.

Wireless IEEE 802.11 Channels Sets (Revision B, G)

Frequency Range Channel ID	2400-2472 MHz	
1	2412	
2	2417	
3	2422	
4	2427	
5	2432	
6	2437	
7	2442	
8	2447	
9	2452	
10	2457*	*1)
11	2462	
12	2467	*2)
13	2472	*2)
14	2484	*3)

*1) Factory-set default channels

*2) Available Area: All approved regions except USA, Canada, and TAIWAN.

*3) Available Area: Japan 802.11b mode only

Wireless Channels Sets (Turbo Mode;2.4GHz)

Frequency Range Channel ID	2400-2472 MHz	Note
6	2437	US only *1

*1: Available Area: US (USA, CANADA) only

When installing Wireless LAN Cards, the channel configuration is managed as follows:

- For wireless clients that operate in a Wireless LAN Infrastructure, the Wireless LAN

Card will automatically start operation at the channel identified by the Wireless LAN Access Point, when roaming between different access points the station can dynamically switch to another channel if required.

- For Wireless LAN Cards installed in Wireless clients that operating in a peer-to-peer mode, the card will use the default channel 10.
- In a Wireless LAN Access Point, the Wireless LAN card will use the factory-set default channel (printed in bold), unless the LAN Administrator selected a different channel when configuring the Wireless LAN Access Point device.

Introduction

Atheros AR5001 Wireless Network Adapters are reference designs based on the Atheros AR5001 chipsets. These reference designs support all IEEE 802.11a data rates (6 to 54 Mbps), 802.11b data rates (1 to 11 Mbps), and 802.11g (1 to 54 Mbps). In the Atheros Turbo Mode™, they support data rates up to 108 Mbps.

The Atheros Client Utility (ACU) is a user-mode utility designed to display information and diagnostics pertaining to a selected Atheros NIC, as well as to allow users to edit and add configuration profiles.

System Requirements

Laptop PC containing:

32-bit CardBus slot (or Desktop PC with PC Card-PCI adapter)

32 MB memory or greater

300 MHz processor or higher

Microsoft Windows 2000, Windows Millennium Edition,

Windows 98 Second Edition, Windows XP,

or Windows NT 4.0 (with Service Pack 6)

Package Contents

Make sure the following materials are available before beginning:

Atheros AR5001 Release v2.3

Atheros AR5001 Wireless Network Adapter, AR5BCB-00021B,

AR5BCB-00022A, AR5BMB-0022A, or Atheros customer station designs using

AR5001A or AR5001X chip sets

Profile Management

Configure the wireless network adapter (wireless card) from the Profile Management tab of the Atheros Client Utility. From here, configuration profiles can be added, edited, or removed, and you can also switch to a different profile.

The wireless network adapter works in either access point mode (infrastructure mode, which uses an AP) or ad hoc mode (a group of stations participating in the wireless LAN).

To switch to a different configuration profile

Click on the profile name in the Profile list, then click the Activate button.

The Profile Management tab also includes a Scan Available Networks ... button that displays Available APs and Ad Hoc Networks list, which describes the available APs and ad hoc networks.

Highlight a network name and click the Activate button to connect an available network. If no configuration profile exists for that network, the Network Configuration Settings opens to the General tab. Fill in the network name and click OK to create the configuration profile for that network.

Click the Refresh button to refresh the list of Available Access Points and Ad Hoc Networks.

To Connect to a Different Network:

Highlight the network name in the list of Available APs and Ad Hoc Networks and click the Activate button to connect to a different network.

Add a New or Modify a Configuration Profile

1. To add a new configuration profile, click New on the Profile Management tab. To modify a configuration profile, select the configuration from the Profile list and click the Modify button.

The Network Configuration Settings dialog box displays the General tab.

2. Edit the Network Configuration Settings:

 Edit the General tab.

Edit the Security tab.

Edit the Advanced tab.

To configure a profile for ad hoc or access point (infrastructure) mode, edit the Network Type field on the General tab.

General Tab

In the Atheros Client Utility, access the General tab by clicking New or Modify on the Profile Management tab.

Edit the fields in the General tab to configure the configuration profile.

Make sure to also edit the Security and Advanced tabs.

Field Name	Description
Profile Name	Identifies the configuration profile. This name must be unique. profile names are not case sensitive.
Network Names (SSIDs)	The IEEE 802.11a wireless network name, (e.g., Atheros 802.11a Wireless Network). This field has a maximum limit of 32 characters. Up to three SSIDs can be configured (SSID1, SSID2, and SSID3).

Advanced Tab

In the Atheros Client Utility, access the Advanced tab by clicking New or Modify on the Profile Management tab, then clicking the Advanced tab in the Network Configuration Settings.

Edit the fields in the Advanced tab of the Network Configuration Settings to configure the profile.

Make sure to also edit the General and Security tabs.

Field Name	Description
Power Save Mode	Specify maximum, normal, or off.
Network Type	Specifies the network as either AP or Ad Hoc.
802.11b Preamble	Specifies the preamble setting in 802.11b. The default setting is Short & Long, which allows both short and long headers in the 802.11b frames. Set to Long Only to override allowing short frames.
Transmit Power Level	Selects 100%, 50%, 25%, 12.5%, or Lowest transmit power.

Wireless Mode	Specifies 5 GHz 54 Mbps, 5 GHz 108 Mbps, 2.4 GHz 11 Mbps, or 2.4 GHz 54 Mbps operation in an access point network.
Wireless Mode when Starting Ad Hoc Network	Specifies 5GHz 54 Mbps, 5 GHz 108 Mbps, 2.4 GHz 11 Mbps, or 2.4 GHz 54 Mbps to start an Ad Hoc network if no matching network name is found after scanning all available modes.

Ad Hoc Mode Profile Configuration

To configure a profile in ad hoc mode, change the Network Type in the Profile Management's Advanced tab. This table provides the Advanced tab field descriptions to configure a profile for ad hoc mode:

Field Name	Description
Network Type	Ad Hoc.
802.11b Preamble	Specifies the preamble setting in 802.11b. The default setting is Short & Long, which allows both short and long headers in the 802.11b frames. Set to Long Only to override allowing short frames.
Transmit Power Level	Selects 100%, 50%, 25%, 12.5%, or Lowest transmit power.
Wireless Mode	Specifies 5 GHz 54 Mbps, 5 GHz 108 Mbps, 2.4 GHz 11 Mbps, or 2.4 GHz 54 Mbps operation in an access point network.
Wireless Mode when Starting Ad Hoc Network	Specifies 5GHz 54 Mbps, 5 GHz 108 Mbps, 2.4 GHz 11 Mbps, or 2.4 GHz 54 Mbps to start an Ad Hoc network if no matching network name is found after scanning all available modes. If Ad Hoc 2.4 GHz is selected, select the channel to start the Ad Hoc network on from the Channel drop-down menu.

Make sure to also edit the General and Security tabs.

Access Point Mode Profile Configuration

To configure a profile in Access Point (infrastructure) mode, change the Network Type in the Advanced tab. This table provides the Advanced tab field descriptions to configure a profile for access point mode:

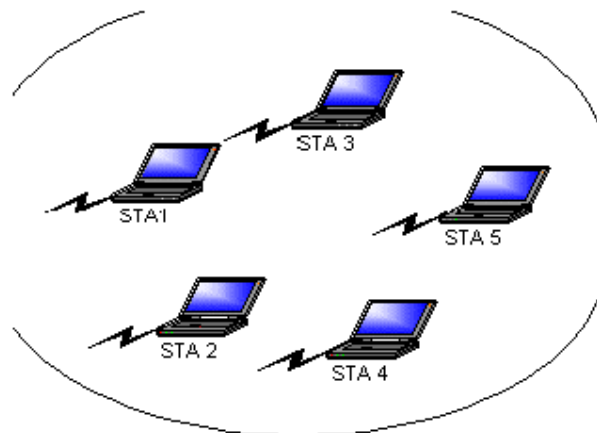
Field Name	Description
Power Save Mode	The power management options: <p style="text-align: center;">Off The adapter receives full power from the PC. Normal The driver turns off power to the adapter for short periods over briefly spaced time</p>

	intervals. Maximum The driver turns off power to the adapter for longer periods over more widely spaced time intervals.
Network Type	Access Point.
802.11b Preamble	Specifies the preamble setting in 802.11b. The default setting is Short & Long, which allows both short and long headers in the 802.11b frames. Set to Long Only to override allowing short frames.
Transmit Power Level	Selects 100%, 50%, 25%, 12.5%, or Lowest transmit power.
Wireless Mode	Specifies 5 GHz 54 Mbps or 5 GHz 108 Mbps operation in an access point network.

Make sure to also edit the General and Security tabs.

Ad Hoc Mode

In ad hoc mode, a wireless network adapter works within an independent basic service set (IBSS), as illustrated here. All stations communicate directly with other stations without using an access point (AP).

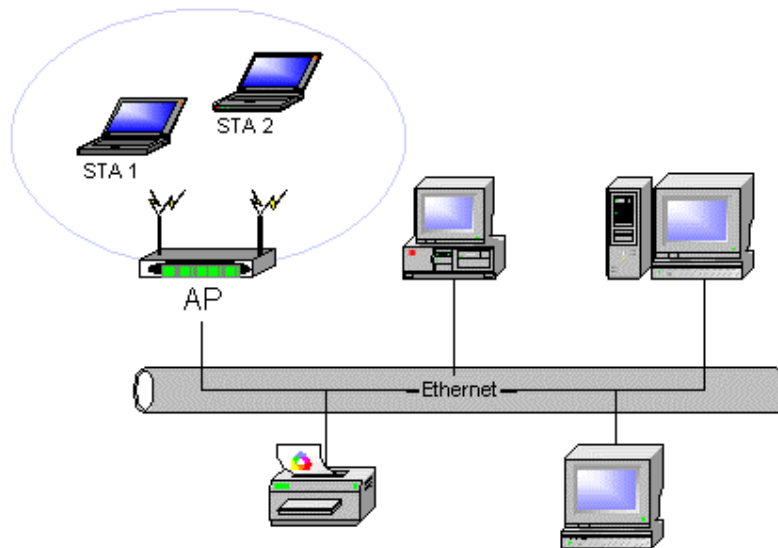


Ad Hoc Mode

To connect to an ad hoc network, configure the profile for ad hoc mode.

Access Point (Infrastructure) Mode

In access point (infrastructure) mode, the wireless network adapter participates in a basic service set (BSS) as a station, and communicates with the other stations through an AP, as illustrated here.



Access Point (Infrastructure) Mode

To connect to an Access Point network, configure the profile for Access Point mode.

Remove a Configuration Profile

To remove a configuration profile, select the profile to remove from the list of configuration profiles on the Profile Management tab.

2. Click the Remove button.

TCP/IP Configuration

Configure the TCP/IP Address for the network device after configuring the wireless network adapter properties.

Open the Control Panel and click Network and Dial-up Connections.

Find the Local Area Connection associated with the wireless network adapter.

Right-click that connection, and click Properties.

Select Internet Protocol (TCP/IP) and click Properties.

Click the radio button Use the following IP address, then enter an IP address and Subnet mask. Assigning an IP address and Subnet mask allows stations to operate in access point mode (infrastructure mode) and to have Internet access.

Default gateway and DNS server information is also required.

IP configuration information (DHCP or assigned IP address, gateway and DNS server IP addresses) is usually obtained from the corporate IT staff.

Click OK to finish.

Profile Management

Configure the wireless network adapter (wireless card) from the Profile Management tab of the Atheros Client Utility. From here, configuration profiles can be added, edited, or removed, and you can also switch to a different profile.

The wireless network adapter works in either access point mode (infrastructure mode, which uses an AP) or ad hoc mode (a group of stations participating in the wireless LAN).

To switch to a different configuration profile

Click on the profile name in the Profile list, then click the Activate button.

The Profile Management tab also includes a Scan Available Networks ... button that displays Available APs and Ad Hoc Networks list, which describes the available APs and ad hoc networks.

Highlight a network name and click the Activate button to connect an available network. If no configuration profile exists for that network, the Network Configuration Settings opens to the General tab. Fill in the network name and click OK to create the configuration profile for that network.

Click the Refresh button to refresh the list of Available Access Points and Ad Hoc Networks.

To Connect to a Different Network:

Highlight the network name in the list of Available APs and Ad Hoc Networks and click the Activate button to connect to a different network.

Zero Configuration

This section describes the operation of the Atheros Client Utility (ACU) and Windows XP Wireless Configuration Service (WZCS).

Wireless Network Configuration

The Windows WZCS is an NT service that manages the wireless connection in a largely dynamic way. You need only identify and configure minimal connection information.

To set Zero Configuration on Windows XP, take the following steps:

1. In Windows XP, open the Wireless Network Configuration Properties dialog box.
2. Select the check box Use Windows to configure my wireless network settings to set Zero Configuration.

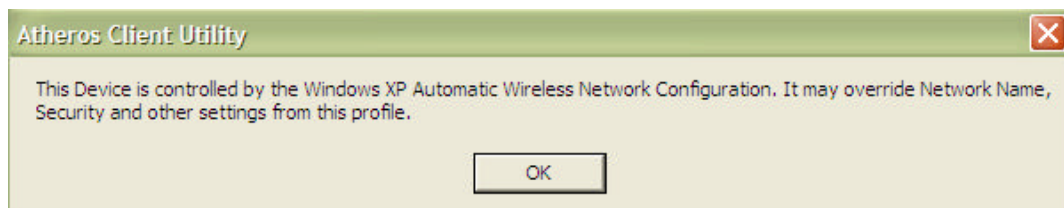
When this check box is selected, Windows XP takes control of these settings for all configuration profiles:

- SSID
- Security Keys
- Ad Hoc settings

The Zero Configuration settings override all configuration profiles, even when you select other options. However, the ACU does still control the following settings when Zero Configuration is set:

- Power settings
- Active/Passive scanning (where applicable)
- Transmit power
- Wireless band
- Short/Long preamble (11b)

When Zero Configuration is in use, a pop-up message is displayed on the ACU when you attempt to create or edit a configuration profile from the Station Configuration tab of the ACU.



To turn Zero Configuration off on Windows XP, take the following steps:

1. In Windows XP, open the Wireless Network Configuration Properties dialog box.

2. Clear the check box **Use Windows to configure my wireless network settings** to set Zero Configuration.

When this check box is cleared, all profile settings are controlled by the configuration profile, which is set up from the Station Configuration tab of the ACU.

Security Tab

In the Atheros Client Utility, access the Security tab by clicking **New** or **Modify** on the Profile Management tab. Click the Security tab in the Network Configuration Settings.

Edit the fields in the Security tab of the Network Configuration Settings to configure the profile.

Make sure to also edit the General and Advanced tabs.

Field Name	Description
Pre-Shared Keys	Enables the use of pre-shared keys that are defined on both the AP and the Station. Click on Define Pre-Shared Keys button to enter pre-shared key information.
LEAP	Enables the use of LEAP for dynamic security keys. Click on Define User Information button to enter the LEAP User Name and Password.
Externally Managed 802.1x Keys	Sets up the station so that it uses externally provided 802.1x authentication.
Disabled	No security.

To define pre-shared encryption keys, click the Define Pre-Shared Keys button with Pre-Shared Keys selected. Fill in the Define Pre-Shared Keys dialog.

Define Pre-Shared Encryption Keys

To define pre-shared encryption keys:

1. Click the Define Pre-Shared Keys button on the security tab.
2. Fill in the fields in the Security dialog box that opens:

Field Name	Description
Key Entry	Method Determines the entry method for an encryption key: hexadecimal (0-9, A-F), or ASCII text (all keyboard characters).

Encryption Keys	Selects the default encryption keys used (either Per-User or Shared). Only allows the selection for a Per-User key, or a Shared First, Second, Third, or Fourth key whose corresponding field has been completed.
Per-User Key	Defines the unique encryption key for network configuration security. This field must be populated to enable security using a unique key. Click on the radio button to set the unique key as the default encryption key. Not used in ad hoc mode.
Shared Keys(1-4)	Defines a set of shared encryption keys for network configuration security. At least one Shared Key field must be populated to enable security using a shared key. Click on the radio button to set the key as the default encryption key.
Key Length	Defines the length for each encryption key. The options include: 64 bit (enter 10 digits) 128 bit (enter 26 digits) 152 bit (enter 32 digits) As the Key Length is changed, the number of available characters in the field automatically changes. If an already-entered key is too long, the key is automatically truncated to fit. If the key length is increased again, the field does not update to its previous value.

3. Click OK for the changes to take effect.

Encryption Types

The wireless network adapter supports three encryption types: wired equivalent privacy (WEP), advanced encryption security (AES), and Cisco Key Integrity Protocol (CKIP). While WEP is universally supported and commonly used, AES provides a higher level of security because frames encrypted with AES are more difficult to decipher without knowing the key. To use AES, specify a unique key.

Note: AES is not supported in ad hoc mode, because ad hoc mode does not support unique keys.

Encryption type is set on both the AP and the station. The station and AP negotiate and attempt to use AES before exchanging data packets. By default, the station is set to auto and attempts to use AES. It will only use WEP if the AP only supports or is configured for WEP.

Check the Status Information or Diagnostics

The Atheros client utility includes a number of tools to display current diagnostics and status information.

- Check current status
 - Check driver information
 - Check receive and transmit diagnostics

Current Status

The Current Status tab of the Atheros Client Utility contains general information about the program and its operations. The Current Status tab does not require any configuration.

The following table describes the items found on the Current Status screen.

Screen Item	Description
Profile Name	The name of the current selected configuration profile. Set up the configuration name on the General tab.
Network Type	The type of network the station is connected to. The options include: <ul style="list-style-type: none"> -Access Point (Infrastructure) -Ad Hoc Configure the network type on the General tab.
	Displays the wireless mode. The options include: <ul style="list-style-type: none"> - 5 GHz 54 Mbps - 5 GHz 108 Mbps - 2.4 GHz 11 Mbps Configure the wireless mode on the Advanced tab.
Current Channel	Specifies the currently connected channel.
Link Status	Shows whether the station is connected to the wireless network.
Encryption Type	Displays the encryption type the driver is using. For example, the modes can include:

	<ul style="list-style-type: none"> - Off - WEP - AES - CKIP <p>Configure the encryption type on the Security tab. For more information, see Encryption Types.</p>
IP Address	The IP address of the station.

Click the Advanced button to see the advanced status diagnostics.

Driver Information Button

The Driver Information button contains general information about the network interface card (the wireless network adapter) and the network driver interface specification (NDIS) driver. Access the Driver Information from the Diagnostics tab.

The following table describes the items found on the Driver Information button.

Screen Item	Description
Card Name	The name of the wireless network adapter.
MAC Address	The MAC address of the wireless network adapter.
Driver	The driver name and path of the wireless network adapter driver.
Driver Version	The version of the wireless network adapter driver.
Driver Date	The creation date of the wireless network adapter driver

Diagnostics

The Diagnostics tab of the Atheros Client Utility provides buttons you can use to retrieve statistics on receive and transmit. The Diagnostics tab does not require any configuration.

The Diagnostics tab lists the following receive and transmit diagnostics for frames received by or transmitted by the wireless network adapter:

- Multicast frames transmitted and received
- Broadcast frames transmitted and received
- Unicast frames transmitted and received
- Total bytes transmitted and received

Click the Advanced Statistics button on the Diagnostics tab to also show receive and transmit statistical information for the following receive and transmit diagnostics for

frames received by or transmitted to the wireless network adapter:

- Frames transmitted and received OK
- Transmitted frames retried
- Transmitted frames dropped
- Beacons received
- Frames received with errors
- Encryption errors
- Duplicate frames received
- Clear-to-send (CTS) frames received
- Authentication rejects: the number of access point authentication failures received by the wireless network adapter
- Association rejects: the number of access point authentication rejects received by the wireless network adapter

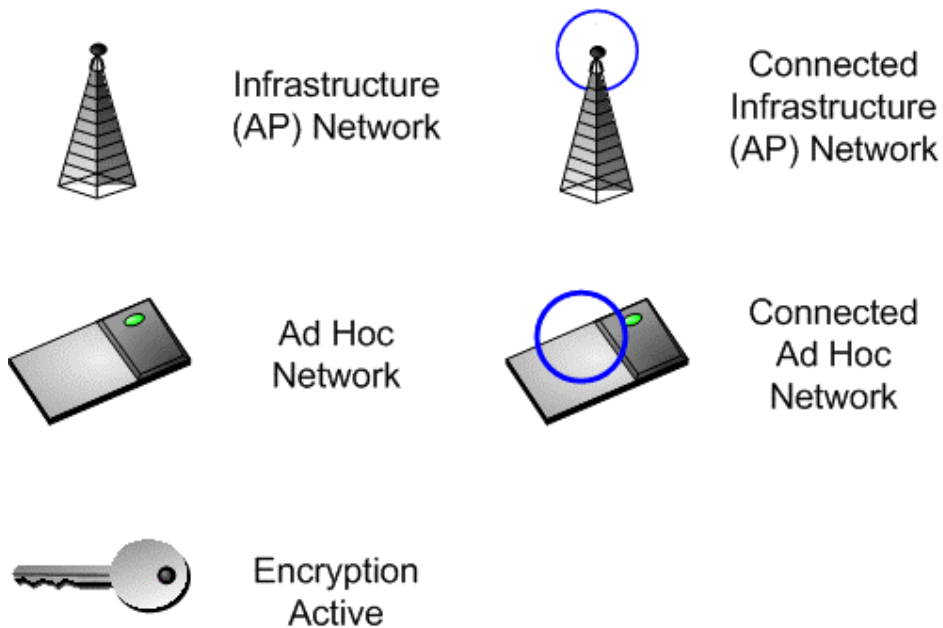
Click the Driver Information button on the Diagnostics tab for general information about the network interface card (the wireless network adapter) and the network driver interface specification (NDIS) driver.

Profile Management: Available APs and Ad Hoc Networks List

The Profile Management tab provides a Scan Available Networks button which contains information about available access point and ad hoc networks.

Click on the Scan Available Networks button to access the Available Access Points and Ad Hoc Networks dialog.

The Available Access Points and Ad Hoc Network dialog provides icons that specify the operational state for that profile.



Available APs and Ad Hoc Networks Icons

Double-click on a network name to connect an available network. If no configuration profile exists for that network, double-click on the network name to create a configuration profile for that network.

The following table describes the columns found in the Available APs and Ad Hoc Networks list.

Column Item	Description
Network Name (SSID)	The IEEE 802.11a wireless network name (service set identification). Configure the network name on the General tab.
Security	Specifies the current state of security.
Signal Strength	The received signal strength indicator. Displays the signal strength in either dB or %, as well as the signal strength indicator.
Channel	Specifies the current channel of operation.
Wireless Mode	Displays the wireless mode. The options include 5 GHz 54 Mbps, 5 GHz 108 Mbps, or 2.4 GHz 11 Mbps. Configure the wireless mode on the Advanced tab.

Click the Refresh button to refresh the list of Available Access Points and Ad Hoc Networks.

To Connect to a Different Network:

From the Profile Management tab, click on the Scan Available Networks button.

Highlight the network name in the list of Available APs and Ad Hoc Networks and click the Activate button to connect to a different network.

Action Menu

Use the Action menu to access the Atheros Client Utility tools:

Enable/Disable Radio Enable or disable the RF Signal on all Atheros station reference designs.

Country Select Open the Country Code Selector to set the regulatory domain of the configuration profile.

This tool is only shown on cards that do not include the World-Wide feature. These cards switch countries automatically.

Enable/Disable Tray Icon Enable or disable the tray icon.

Exit Exit the Atheros Client Utility application.

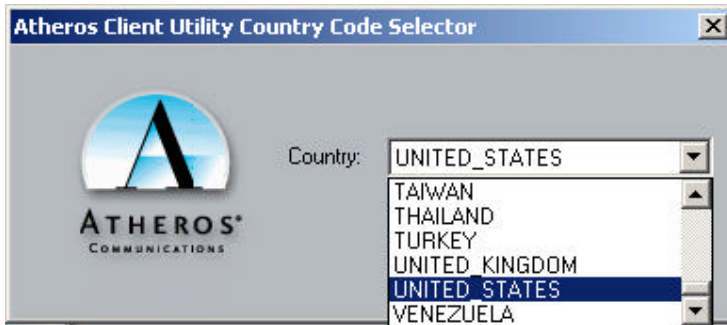
Country Code Selector

The Country Code selector is a tool provided to allow users to select the country where they are using the wireless network adapter. Access the Country Code Selector by choosing Action > Country Select from the menu.

Note that this tool is not included for World-Wide cards, because these cards switch countries automatically as needed.

To change the country

1. Choose the country to switch to from the Country pull-down menu in the Country Code Selector.



2. Click OK to continue.

Country selection takes effect immediately. View the advanced status information on the Current Status tab to verify the selected country.

The wireless network adapter has EEPROM locations allocated to store country code information. The selections represent three regulatory domains:

- FCC (USA and Canada)
- ETSI (Europe)
- MKK (Japan)

When the country code is changed, the NDIS driver scans only the legal frequency channels allowed in those regulatory domains.

Note that the Country Select button is only available when the card is programmed to a single country.

Advanced Status Information

Click the Advanced button on the Current Status tab of the Atheros Client Utility to see advanced information about the program and its operations. The Current Status tab does not require any configuration.

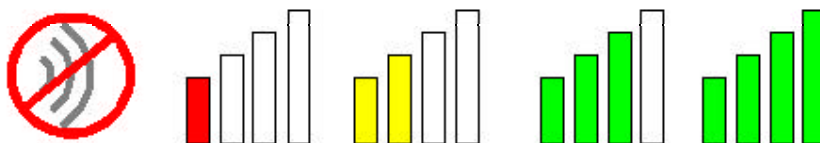
The following table describes the items found on the Advanced Status screen.

Screen Item	Description
Country	The country the card is set for. Configure the country in the country code selector, accessible from the Action menu.
Transmit Power Level	The transmit power level shows the rate in dBm.

Network Name (SSID)	The wireless network name. Configure the network name on the General tab.
Power Save Mode	The power management options. Power management is disabled in ad hoc mode. Off The adapter receives full power from the PC. Normal The driver turns off power to the adapter for brief periods over briefly-spaced time intervals. Maximum The driver turns off power to the adapter for longer periods over more widely spaced time intervals. Configure the power save mode on the General tab.
Frequency	The frequency the station is using.
Transmit Rate	The transmit rate (Mbps) for the current connection for the wireless driver.
Receive Rate	The receive rate (Mbps) for the current connection for the driver.

Tray Icon

The tray icon appears at the bottom of the screen, and shows the signal strength using colors and the received signal strength indication (RSSI).



Tray Icons

Hold the mouse cursor over the tray icon to display transmit and receive speed and the current configuration profile name.

Right-click on the tray icon to:

Launch Station Utility

Launch the Atheros Client Utility. Use the Atheros Client Utility to configure the profile or view status and statistics information.

Atheros Client Utility Help	Open the Atheros Client Utility online help.
Enable/disable radio	Enable or disable the RF Signal.
Country Select	Open the Country Code Selector to set the regulatory domain of the configuration profile.
Configuration Profile	Click a configuration profile name to switch to it. If no configuration profile exists for a connection, add a profile first.
Exit	Exit the Atheros Client Utility application.

The colors are defined as follows:

Color	Quality	RSSI*
Green	Excellent	20 dB +
Green	Good	10-20 dB
Yellow	Poor	5-10 dB
Red	Poor	< 5 dB

*Received signal strength indication RSSI.
Displayed in dB or percentage.

Enable or disable the tray icon in the Action menu.

Display Settings

To change the display settings, choose Options > Display Settings from the menu.

The display settings dialog box contains tools to set the:

Signal Strength Display Units	Sets the units used when displaying signal strength: percentage or dB.
Refresh Interval	Sets the display refresh interval in seconds.
Data Display	Sets the display to cumulative or relative: -Relative displays the change (delta) in statistical data since the last update. -Cumulative displays statistical data collected from the beginning of driver load.

Updating the NDIS Driver

The InstallShield process includes installing the NDIS drivers for the Atheros AR5001 Wireless Network Adapter (wireless card). If a new network adapter is installed, use the following instructions to make sure the driver is updated for the new wireless network adapter.

Windows XP and Windows 2000:

With no existing Atheros NDIS driver installed, insert the wireless network adapter into a 32-bit CardBus slot. Update the NDIS driver:

1. Open the InstallShield Wizard (setup.exe).
2. Click Next to continue.
3. Click Yes to accept the License Agreement.
4. On the Setup Type page, choose Update Driver and Applications (recommended) or Update Driver Only to update the NDIS driver. Click Next to continue.
5. Choose the destination location. Click Next to continue.
6. Choose whether to enable the Tray Icon. Click Next to continue.
7. Click Next to continue.
8. Click Finish when the InstallShield Wizard is complete.
9. After installing the network card, set up the configuration profiles.

Windows 98, Windows ME, and Windows NT:

With no existing Atheros NDIS driver installed, insert the wireless network adapter into a 32-bit CardBus slot. Update the NDIS driver:

1. Wait for the New Hardware Wizard to display.
2. Click Next to continue.
3. Choose Search for a suitable driver for my device (recommended).
4. Click Next to continue.
5. Insert the Release CD into the CD-ROM drive.
6. Choose Specify a location under Optional search locations.
7. Click Next to continue.
8. Browse to the location where the NDIS driver is located. The default folder is D:\ndis\bin\production\ndis5, assuming D: is the CD drive.
9. Click OK to continue.
10. After finding the Atheros driver installation file net5211.inf, click Next to continue.

11. The Atheros NDIS evaluation driver currently does not have a digital signature from Microsoft, so Windows may display a warning message. Click Yes to proceed with driver installation.

12. Click Finish to complete the driver installation.

13. After installing the network card, set up the configuration profiles.

Information sheet

Wireless Interoperability

The Atheros AR5001X+ Wireless Network Adapter products are designed to be interoperable with any wireless LAN product that is based on Direct Sequence Spread Spectrum (DSSS)/Orthogonal Frequency Division Multiplexing(OFDM) radio technology, and is compliant to:

The IEEE 802.11 Standard on Wireless LANs(Revision B/G), as defined and approved by the Institute of Electrical and Electronics Engineers.

The Wireless Fidelity(Wi-Fi) certification as defined by the Wi-Fi Alliance.

CAUTION

Bluetooth™ and WirelessLAN devices operate within the same radio frequency range and may interfere with one another. If you use Bluetooth™ and WirelessLAN devices simultaneously, you may occasionally experience a less than optimal network performance or even lose your network connection.

If you should experience any such problem, immediately turn off either one of your Bluetooth™ or WirelessLAN.

Please contact Toshiba PC product support on web site

<http://www.toshiba-europe.com/computers/tnt/bluetooth.htm> in Europe or

<http://www.pc.support.global.toshiba.com> in the United States for more information.

Wireless LAN and your Health

Wireless LAN products, like other radio devices, emit radio frequency electromagnetic energy. The level of energy emitted by Wireless LAN devices however is far much less than the electromagnetic energy emitted by wireless devices like for example mobile phones.

Because Wireless LAN products operate within the guidelines found in radio frequency safety standards and recommendations, TOSHIBA believes Wireless LAN is safe for use by consumers. These standards and recommendations reflect the consensus of the scientific community and result from deliberations of panels and committees of scientists who continually review and interpret the extensive research literature.

In some situations or environments, the use of Wireless LAN may be restricted by the proprietor of the building or responsible representatives of the organization. These situations may for example include:

Using the Wireless LAN equipment on board of airplanes, or

In any other environment where the risk of interference to other devices or services is perceived or identified as harmful.

If you are uncertain of the policy that applies on the use of wireless devices in a specific organization or environment (e.g. airports), you are encouraged to ask for authorization to use the Wireless LAN device prior to turning on the equipment.

Regulatory Information

The Atheros AR5001X+ Wireless Network Adapter must be installed and used in strict accordance with the manufacturer's instructions as described in the user documentation that comes with the product. This device complies with the following radio frequency and safety standards.

Canada – Industry Canada (IC)

This device complies with RSS 210 of Industry Canada.

Operation is subject to the following two conditions: (1) this device may not cause interference, and (2) this device must accept any interference, including interference that may cause undesired operation of this device.”

L' utilisation de ce dispositif est autorisée seulement aux conditions suivantes : (1) il ne doit pas produire de brouillage et (2) l' utilisateur du dispositif doit être prêt à accepter tout brouillage radioélectrique reçu, même si ce brouillage est susceptible de compromettre le fonctionnement du dispositif.

The term "IC" before the equipment certification number only signifies that the Industry Canada technical specifications were met.

IC : 248H-DPA3299W

This device has been designed to operate with an antenna having a maximum gain of 4.8dB. Antenna having a higher gain is strictly prohibited per regulations of Industry Canada. The required antenna impedance is 50 ohms.

To reduce potential radio interference to other users, the antenna type and its gain should be so chosen that the equivalent isotropically radiated power (EIRP) is not more than that required for successful communication.

To prevent radio interference to the licensed service, this device is intended to be operated indoors and away from windows to provide maximum shielding. Equipment (or its transmit antenna) that is installed outdoors is subject to licensing.

Pour empêcher que cet appareil cause du brouillage au service faisant l'objet d'une licence, il doit être utilisé à l'intérieur et devrait être placé loin des fenêtres afin de fournir un écran de blindage maximal. Si le matériel (ou son antenne d'émission) est installé à l'extérieur, il doit faire l'objet d'une licence.

Europe – EU Declaration of Conformity

This device complies with the essential requirements of the R&TTE Directive 1999/5/EC with essential test suites as per standards:

België/ Belgique:	For outdoor usage only channel 10 (2457 MHz) and 11 (2462 MHz) is allowed. For private usage outside buildings across public grounds over less than 300m no special registration with IBPT/BIPT is required. Registration to IBPT/BIPT is required for private usage outside buildings across public grounds over more than 300m. An IBPT/BIPT license is required for public usage outside building. For registration and license please contact IBPT/BIPT.
	Gebruik buiten gebouw alleen op kanalen 10 (2457 MHz) en 11 (2462 MHz). Voor privé-gebruik buiten gebouw over publieke grond over afstand kleiner dan 300m geen registratie bij BIPT/IBPT nodig; voor gebruik over afstand groter dan 300m is wel registratie bij BIPT/IBPT nodig. Voor publiek gebruik buiten gebouwen is licentie van BIPT/IBPT verplicht. Voor registratie of licentie kunt u contact opnemen met BIPT.
	L'utilisation en extérieur est autorisée sur le canal 10 (2457 MHz) et 11 (2462 MHz). Dans le cas d'une utilisation privée, à l'extérieur d'un bâtiment, au-dessus d'un espace public, aucun enregistrement n'est nécessaire pour une distance de moins de 300m. Pour une distance supérieure à 300m un enregistrement auprès de l'IBPT est requise. Pour une utilisation publique à l'extérieur de bâtiments, une licence de l'IBPT est requise. Pour les enregistrements et licences, veuillez contacter l'IBPT.
Deutschland:	License required for outdoor installations. Check with reseller for procedure to follow Anmeldung im Outdoor-Bereich notwendig, aber nicht genehmigungspflichtig. Bitte mit Händler die Vorgehensweise abstimmen.
France:	Restricted frequency band: only channels 10 and 11 (2457 MHz and 2462 MHz respectively) may be used in France. License required for every installation, indoor and outdoor installations. Please contact ART for procedure to follow. Bande de fréquence restreinte : seuls les canaux 10 à 11 (2457 et 2462 MHz respectivement) doivent être utilisés en France. Toute utilisation, qu'elle soit intérieure ou extérieure, est soumise à autorisation. Vous pouvez contacter l'Autorité de Régulation des Télécommunications (http://www.art-telecom.fr) pour la procédure à suivre.
Italia:	License required for indoor use. Use with outdoor installations not allowed E' necessaria la concessione ministeriale anche per l'uso interno. Verificare con i rivenditori la procedura da seguire. L'uso per installazione in esterni non è permessa.

Nederland	License required for outdoor installations. Check with reseller for procedure to follow Licentie verplicht voor gebruik met buitenantennes. Neem contact op met verkoper voor juiste procedure
-----------	---

USA-Federal Communications Commission (FCC)

This device complies with Part 15 of FCC Rules. Operation of the devices in a Wireless LAN System is subject to the following two conditions:

This device may not cause harmful interference.

This device must accept any interference that may cause undesired operation.

TOSHIBA is not responsible for any radio or television interference caused by unauthorized modification of the devices included with this Atheros AR5001X+ Wireless Network Adapter, or the substitution or attachment of connecting cables and equipment other than specified by TOSHIBA.

The correction of interference caused by such unauthorized modification, substitution or attachment will be the responsibility of the user.

Caution: Exposure to Radio Frequency Radiation.

The Atheros AR5001X+ Wireless Network Adapter will be installed with one of three types of antennas. The all of antenna types, when installed are located at the upper edge of the LCD screen. For all antennas, the radiated output power of the Atheros AR5001X+ Wireless Network Adapter is far below the FCC radio frequency exposure limits. Nevertheless, the Atheros AR5001X+ Wireless Network Adapter shall be used in such a manner that the potential for human contact during normal operation is minimized. In normal operating configuration, the LCD in the upright position, the distance between the antenna and the user should not be less than 20cm. The antenna(s) used for this transmitter must not be co-located or operating in conjunction with any other antenna or transmitter. Refer to the Regulatory Statements as identified in the documentation that comes with those products for additional information.

The installer of this radio equipment must ensure that the antenna is located or pointed such that it does not emit RF field in excess of Health Canada limits for the general population; consult Safety Code 6, obtainable from Health Canada's website www.hc-sc.gc.ca/rpb.

Relevant transmitters include FCC IDs: CJ6UPA3299WL, CJ6UPA3232BT.

Using this equipment in Japan

In Japan, the frequency bandwidth of 2,400 2,483.5MHz for second generation low-power data communication systems such as this equipment overlaps that of mobile object identification systems (premises radio station and specified low-power radio station).

1. Sticker

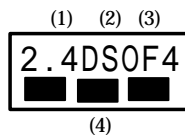
Please put the following sticker on devices incorporating this product.

In the frequency bandwidth of this equipment, industrial device, scientific device, medical device like microwave oven, licensed premises radio station and non-licensed specified low-power radio station for mobile object identification system (RF-ID) that is used in product line of factories,(Other Radio Stations)are used.

- 1 Please make sure before using this equipment that no Other Radio Stations are used in the neighborhood.
- 2 In case that RF interference occurs to Other Radio Stations from this equipment, please change promptly the frequency for use, place to use, or stop emitting Radio.
- 3 Please contact TOSHIBA Direct PC if you have a problem, such as interference from this equipment to Other Radio Stations

2. Indication

The indication shown below appears on this equipment.



- (1) 2.4 this equipment uses a frequency of 2.4GHz.
- (2) DS This equipment uses DS-SS modulation
OF This equipment uses OFDM modulation.
- (3) 4 The interference range of this equipment is less than 40m.
- (4) ■ ■ ■ This equipment uses a frequency bandwidth from 2,400MHz to 2,483.5MHz. It is possible to avoid the band of mobile object identification systems.

3. TOSHIBA Direct PC

Monday – Friday : 10:00 – 17:00

Toll Free Tel : 0120-13-1100

Direct Dial : 03-3457-5916

Fax : 03-5444-9450

Device Authorization

This device obtains the Technical Regulation Conformity Certification and it belongs to the device class of radio equipment of low-power data communication system radio station stipulated in the Radio Law of Japan.

The Name of the radio equipment: PA3299U-1MPC(1)

TELECOM ENGINEERING CENTER

Approval Number : 03NYDA****, 03WYBA****

The following restrictions apply:

Do not disassemble or modify the device.

Do not install the embedded wireless module into other device.

Trademark

Bluetooth is a trademark owned by its proprietor and used by TOSHIBA under license.