

**SG4-E01**

**User manual V0.0.1**

**2007.8**

This User Manual is printed by TOSHIBA without any warrant. Toshiba Information Systems (UK) Ltd. reserves the right to modify or improve this Manual for any printing error, discrepancy from the latest data, program and equipment any time without separate notice, which, however, will be incorporated into the latest version of the User Manual.

**Note:**

Some services/functions hereunder are not necessarily supported by all networks, such as 112, the international emergency call number.

Please contact the network operator or service provider for clarification of how to use specific service/function.

Please read "Important Safety Information" and "Repair Guideline" chapters prior to the use of the mobile phone.

# Contents

<b>IMPORTANT SAFETY INFORMATION .....</b>	<b>4</b>
<b>1.START-UP .....</b>	<b>10</b>
1.1 SIM CARD AND BATTERY .....	10
1.2 CHARGE THE BATTERY.....	12
1.3 YOUR PHONE.....	13
1.4 DEFINITIONS OF BUTTONS .....	14
1.5 STATUS ICONS.....	16
<b>2. BASIC FUNCTIONS .....</b>	<b>17</b>
2.1 SWITCH THE PHONE ON/OFF .....	17
2.2 PIN AND PUK CODES.....	17
2.3 OUTGOING CALL .....	17
2.4 ANSWER CALLS .....	18
2.5 REJECT CALLS .....	18
2.6 FUNCTIONS IN VOICE CALL .....	19
<b>3. MAIN MENU .....</b>	<b>20</b>
3.1 PHONE BOOK .....	20
3.2 SMS .....	22
3.3 MUSIC .....	24
3.4 LOG .....	24
3.5 SETTINGS.....	25
3.6 ALARM .....	29
<b>4. REFERENCE INFORMATION.....</b>	<b>30</b>
<b>5. ACCESSORY .....</b>	<b>32</b>
<b>REPAIR GUIDELINE.....</b>	<b>33</b>

# Important Safety Information

## ◆Emergency Services

### To make an emergency call in any country

- Ensure that your phone is switched on and in service.
- Press the **[Power/Cancel]** key to return to the Home screen if needed.
- Enter the official emergency number (like 000, 08, 110, 112, 118, 119, 911), then press **[Send/OK]** key to call the number. Emergency numbers vary by location.

Follow the instructions and do not end the call until told to do so.

- Tell the operator which service you require: Police, Ambulance, Fire Brigade, Coastguard or Mountain Rescue Service. Give all the necessary information as accurately as possible.
- The emergency number service is available on every digital network service.
- Due to the nature of the cellular system, connection for emergency call cannot be guaranteed.

## ◆General Care

A phone contains delicate electronic circuitry, magnets and battery systems. You should treat it with care and pay attention to the following:

- This phone is fitted with an internal battery that can only be replaced by a qualified service engineer. There is a risk of explosion if the battery is replaced with an incorrect battery type. Dispose of the used battery in accordance with the manufacturer's instructions.
- Do not allow the phone, battery or accessories to come into contact with liquids or moisture at any time. Do not immerse in liquid.
- Do not paint the phone.
- Do not drop, throw or subject the phone to rough treatment.
- Do not place the phone alongside computer disks, credit cards, travel cards and other magnetic media. The information contained on disks or cards may be affected by the phone.
- Do not leave the phone or the battery in places where the temperature could exceed 60 °C, e.g. on a car dashboard or a window sill, behind glass in direct sunlight, etc.
- Do not remove the battery while the phone is switched on.
- Take care not to allow metal objects, such as coins or key rings to contact or short circuit the battery terminals.
- Do not dispose of batteries in a fire. Dispose of Li-ION batteries at a Li-ION recycling point.
- Do not put the battery in your mouth, as battery electrolytes may be toxic if swallowed.
- Do not attempt to dismantle the phone or any of its accessories.
- Do not put a battery into a microwave oven, dryer or high-pressure container.
- Do not let the battery come into direct contact with an electric outlet or cigarette lighter charger. Use only authorized charger units.
- Do not pierce the battery with a sharp object such as a needle.

- When the battery is thrown away, be sure it is non-conducting by applying vinyl tape to the (+) and (-) terminals.
- Do not disassemble or modify the battery.
- Do not solder the battery directly.
- Stop using the battery if you detect any abnormalities, such as odor, discoloration or heat during use, charge or storage.
- Do not use the phone with a damaged or misshapen battery.
- In the unlikely event of a battery leak, take care to keep the battery discharge away from your eyes or skin. If the leakage does come into contact with the eyes or skin, please flush thoroughly in clean water and consult a doctor.
- Remove a worn out battery immediately.
- The handset itself may become warm when the handset is used for an extended period of time or when the video functions is used. Also, it may become warm while the battery is being charged.
- When a phone is set to Vibration mode, the vibration can sometimes cause your phone to move. Be careful not to place the phone near heat sources (such as a heater) or too close to the edge of the table.
- Use an anti-static cloth to clean the phone. Do not use an ordinary dry cloth or electrostatically charged cloth. Do not use chemical or abrasive cleaners as these could damage the case.
- Remember to recycle the cardboard packaging supplied with this phone.
- Remember to make backup copies of all important data on your phone.
- Do not leave the battery pack empty or disconnected for a long time, otherwise some data may be initialized.
- Take care not to put your phone in your back pocket and then sit on it. Also, do not put your phone at the bottom of a bag where it may subject to excessive weight or pressure. Doing so may damage the LCD and camera lens and cause them to malfunction.
- Hold the phone away from your ear when you
  - Play music on the music player
  - Play the ring tune through the speaker.
 It may damage, or irritate your ears.

#### ◆ Safety

The use of mobile phones is not allowed in some radiation-sensitive areas, such as hospitals, research centre and aircraft. Ensure that you switch off your phone in these areas. If in doubt, remove the battery.

#### ◆ Aircraft safety

Switch off your phone and remove its battery when inside or near an aircraft. The use of phones in aircraft is illegal. It may be dangerous to the operation of the aircraft and it may disrupt the mobile network. Failure to observe this instruction may lead to suspension or denial of mobile network services to the offender or legal action or both.

Do not use the phone on the ground without the permission of the ground staff.

#### ◆ **Hospital safety**

Switch off your phone and remove its battery in areas where the use of phones is prohibited.

Follow the instructions given by the respective medical centre regarding the use of mobile phones on their premises.

#### ◆ **General safety**

- Observe "Turn off mobile" signs, such as those near petrol stations, chemicals or explosives and switch off your phone.
- If you have a heart condition, be careful with the call vibration or tone volume settings.
- Do not allow children to play with the phone, charger or batteries.
- Do not use the phone where blasting is in progress.
- The operation of some medical electronic devices, such as hearing aids and pacemakers, may be affected if you use a mobile phone next to them. Observe any warning signs and the manufacturer's recommendations.
- Your phone contains metal which may cause a skin irritation, a rash or eczema.

#### ◆ **Road safety**

- You **MUST** exercise proper control of your vehicle at all times. Give your full attention to driving.
- Observe all local safety regulations regarding the use of mobile phones while driving.
- Pull off the road and park before making or answering a call.
- You **MUST NOT** stop on the hard shoulder of a motorway to answer or make a call, except in an emergency.
- Switch off your phone at a refueling point, such as a petrol station, even if you are not refueling your own car.
- Do not store or carry flammable or explosive materials in the same compartment as a radio transmitter.
- Electronic vehicle systems, such as anti-lock brakes, speed control and fuel injection systems are not normally affected by radio transmissions. The manufacturer of such equipment can advise if it is adequately shielded from radio transmissions. If you suspect vehicle problems caused by radio transmissions, consult your dealer and do not switch on the phone until it has been checked by qualified approved installers.
- Check if local laws and/or regulations restrict the use of phones while driving.

#### ◆ **Vehicles equipped with an airbag**

An airbag inflates with great force. Do not place objects, including either installed or portable wireless equipment, in the area over the airbag or in the airbag deployment area. If vehicle wireless equipment is improperly installed and the airbag inflates, serious injury could result.

#### ◆ **Third party equipment**

The use of third party equipment, batteries, cables or accessories, not made or authorized by TOSHIBA, may invalidate the warranty of your phone and also adversely affect the

phone's operation.

◆ **Service**

The phone, batteries and charger contain no user-serviceable parts. We recommend that your phone is serviced or repaired by an TOSHIBA authorized service centre. Please contact your service provider for more information.

◆ **Efficient use**

The phone has an internal antenna. For optimum performance with minimum power consumption, please do not cover the internal antenna area with your hand. Covering the internal antenna affects call quality, may cause the phone to operate at higher power levels than needed and may shorten talk and standby times.

◆ **Radio frequency (RF) signals**

THIS MODEL PHONE MEETS THE U.S. GOVERNMENT'S REQUIREMENTS FOR EXPOSURE TO RADIO WAVES.

Your wireless phone contains a radio transmitter and receiver. Your phone is designed and manufactured not to exceed the emission limits for exposure to radio frequency (RF) energy set by the Federal Communications Commission of the U.S. Government. These limits are part of comprehensive guidelines and establish permitted levels of RF energy for the general population. The guidelines are based on standards that were developed by independent scientific organizations through periodic and thorough evaluation of scientific studies.

The exposure standard for wireless mobile phones employs a unit of measurement known as the Specific Absorption Rate (SAR). The SAR limit set by the FCC is 1.6W/kg.\* Tests for SAR are conducted using standard operating positions accepted by the FCC with the phone transmitting at its highest certified power level in all tested frequency bands.

Although the SAR is determined at the highest certified power level, the actual SAR level of the phone while operating can be well below the maximum value. This is because the phone is designed to operate at multiple power levels so as to use only the power required to reach the network. In general, the closer you are to a wireless base station antenna, the lower the output.

Before a phone model is available for sale to the public, it must be tested and certified to the FCC that it does not exceed the limit established by the U.S. government-adopted requirement for safe exposure. The tests are performed on position and locations (for example, at the ear and worn on the body) as required by FCC for each model. The highest SAR value for this model phone (FCC ID: SP2-SG4-E01) as reported to the FCC when tested for use at the ear is 0.657 W/kg, and when worn on the body, is 1.06 W/kg. (Body-worn measurements differ among phone models, depending upon available accessories and FCC requirements). While there may be differences between the SAR levels of various phones and at various positions, they all meet the U.S. government requirement.

The FCC has granted an Equipment Authorization for this model phone with all reported SAR levels evaluated as in compliance with the FCC RF exposure guidelines. SAR

information on this model phone is on file with the FCC.

For body worn operation, this phone has been tested and meets the FCC RF exposure guidelines when used with an accessory designated for this product or when used with an accessory that contains no metal and that positions the handset a minimum of 1.5 cm from the body.

\* In the United States, the SAR limit for wireless mobile phones used by the public is 1.6 watts/kg (W/ kg) averaged over one gram of tissue. SAR values may vary depending upon national reporting requirements and the network band.

#### ◆European RF exposure information

This mobile phone complies with the EU requirements for exposure to radio waves.

Your mobile phone is a radio transceiver, designed and manufactured not to exceed the SAR\* limits\*\* for exposure to radiofrequency (RF) energy, which SAR\* value. While there may be differences between the SAR\* levels of various phones and at various positions, they all meet\*\*\* the EU requirements for RF exposure.

\* The exposure standard for mobile phones employs a unit of measurement known as the Specific Absorption Rate, or SAR.

\* \* The SAR limit for mobile phones used by the public is 2.0 watts/kilogram (W/kg) averaged over ten grams of tissue, recommended by The Council of the European Union. The limit incorporates a substantial margin of safety to give additional protection for the public and to account for any variations in measurements.

\* \* \* Tests for SAR have been conducted using standard operating positions with the phone transmitting at its highest certified power level in all tested frequency bands. Although the SAR is determined at the highest certified power level, the actual SAR level of the phone while operating can be well below the maximum value. This is because the phone is designed to operate at multiple power levels so as to use only the power required to reach the network. In general, the closer you are to a base station antenna, the lower the power output.

FCC Regulations:

● This mobile phone complies with part 15 of the FCC Rules. Operation is subject to the following two conditions: (1) This device may not cause harmful interference, and (2) this device must accept any interference received, including interference that may cause undesired operation.

● This mobile phone has been tested and found to comply with the limits for a Class B digital device, pursuant to Part 15 of the FCC Rules. These limits are designed to provide reasonable protection against harmful interference in a residential installation. This equipment generates uses and can radiate radio frequency energy and, if not installed and used in accordance with the instructions, may cause harmful interference to radio communications. However, there is no guarantee that interference will not occur in a particular installation; if this equipment does cause harmful interference to radio or television reception, which can be determined by turning the equipment off and on, the user is encouraged to try to correct the interference by one or more of the following measures:



- Reorient or relocate the receiving antenna.
  - Increase the separation between the equipment and receiver.
  - Connect the equipment into an outlet on a circuit different from that to which the receiver is connected.
  - Consult the dealer or an experienced radio/TV technician for help.
- Changes or modifications not expressly approved by the party responsible for compliance could void the user's authority to operate the equipment.

◆ **Declaration of Conformity**

The product "SG4-E01" is declared to conform with the essential requirements of European Union Directive 1999/5/EC Radio and Telecommunications Terminal Equipment Directive 3.1(a), 3.1(b) and 3.2. The Declaration of Conformity can be found on [www.toshiba.co.uk](http://www.toshiba.co.uk).

◆ **Copyright Notice**

The music files you copy from PC may be protected by copyright laws. They are for personal use only and must not be otherwise used without the permission of the copyright owner.

◆ **Disposing of your used Toshiba product**

**In the European Union**

EU-wide legislation as implemented in each Member State requires that used electrical and electronic products carrying the mark (right) must be disposed of separately from normal household waste. *This includes mobile telephones or electrical accessories, such as chargers or headsets.* When you dispose of such products, please follow the guidance of your local authority and/or ask the shop where you purchased the product.

**The mark on the electrical and electronic products only applies to the current European Union Member States.**



**Outside the European Union**

If you wish to dispose of used electrical and electronic products outside the European Union, please contact your local authority and ask for the correct method of disposal.

# 1. Start-up

## 1.1 SIM card and Battery

SIM card (user ID mode) incorporates mobile phone number and service items, and can store phone numbers and personal data.

**⚠Caution** Place SIM card beyond the reach of children.

**⚠Caution** SIM card and the contact points are easily to be damaged by scratching, please handle the SIM card carefully.

**⚠Caution** Keep SIM card out of static, dust or water.

**⚠Caution** Install SIM card when powering off the phone and getting out the battery.

### Install the SIM card

1. With the back of the phone face up, palm up to hold the phone, then slide the back cover down and remove it from the phone as shown Fig 1



Fig 1

2. Push the battery out with the thumb at the phone back, get it out from the battery cabin as shown Fig 2;



Fig 2

3. Insert SIM card into the slot by aligning the angles of SIM card with those of the slot with the metal side facing down as shown Fig 3;

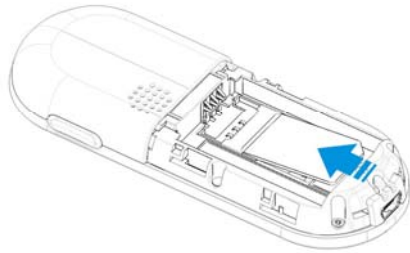


Fig 3

4. Insert the battery into the cabin top with the end with metal contact point upward and press the other end of the battery to insert it fully into the cabin as shown Fig 4;

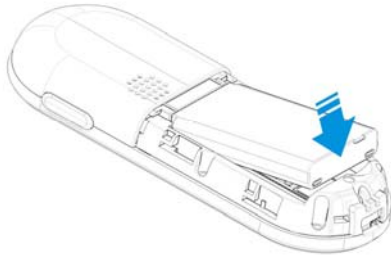


Fig 4

5. Slide the back cover upward until fully clinched as shown Fig 5.

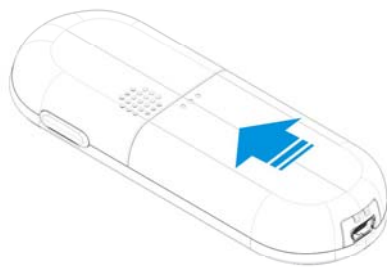


Fig 5

### Remove the SIM card

1. Ensure that the power is off. If the power is on, press and hold the **[Power]** key until power is off.
2. Remove the battery.
3. Slide the SIM card out of the SIM card holder.



**Caution** Please contact the network service provider for any failure of the SIM card.



**Caution** The system environment, mobile phone configuration and game functions can all impact the idle-mode duration.

### Battery Performance and Maintenance

1. The phone is charged by rechargeable charger.
2. Please note that the new battery can reach the best performance after two or three full charging-discharging cycles.
3. The battery can sustain hundreds of charging-discharging cycles before out of service. It is the time to replace the battery upon obviously shortened working time of the battery (session duration and idle time).
4. Please adopt the battery and charger approved by the TOSHIBA manufacturer to ensure the service life of phone; the battery equipped with the phone is rechargeable Li-battery. Please do not connect the battery with the charger for over a week, as over-charge will shorten its service life; the charged battery will discharge over time when idle for long.
5. Over high or over low temperature will impair the battery charging.
6. Do not use the battery for other purposes.
7. Do not use any damaged charger or battery.
8. Do not short-circuit the battery; the backup battery in pockets or bags may touch the metal articles (coins, brooches or pens) that may connect the “+” pole and “-“ pole of the battery (i.e. the metal bar on the battery) and lead to short circuit, which may damage the battery or connections.
9. Keeping the battery in over hot or cold environment will shorten the life service or reduce the capacity of the battery; keep the battery in environment between 0°C and 45°C; otherwise the phone may suspend operation even fully charged.
10. Do not throw battery into fire.
11. Please dispose of the battery as required (recycled), do not dispose of battery as living rubbish.
12. When not using the battery for a long period, remove it from the phone and store in a place with low humidity and low temperature.

## 1.2 Charge the battery

When battery voltage is lower than the operating voltage, the screen will display charging prompt and empty-battery icon with prompt tone and information, and the phone will automatically turn off after a while.

The phone is equipped with the rechargeable Li-battery; please adopt

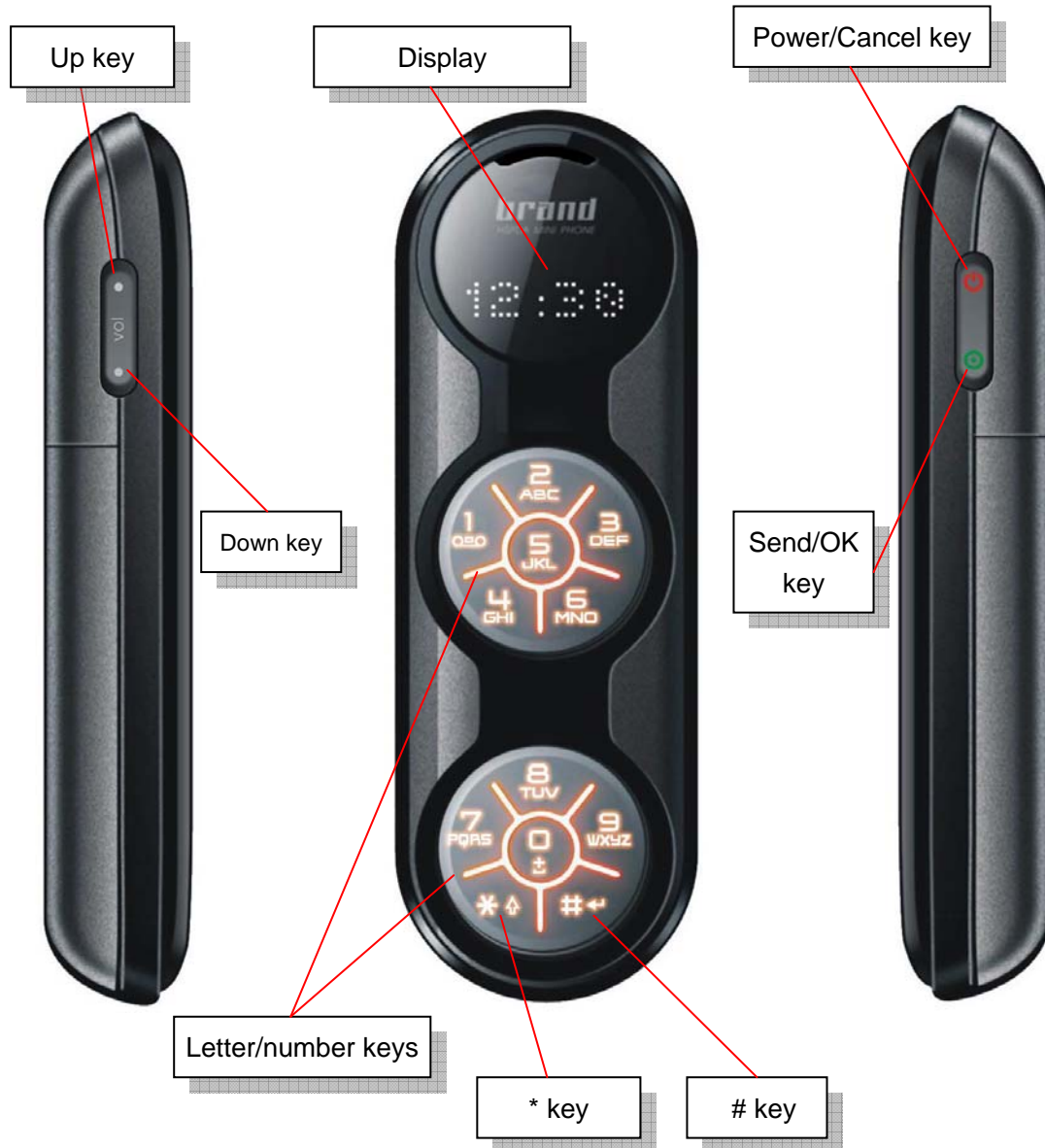
original-manufacturer charger and battery to ensure the phone service life.

1. Carefully insert the pins of the charger to the jack at the profile of the phone.
2. Connect the charger with the power supply when the phone is shut off, the screen will display charging animation. In case of charging when turning on, the battery icon will flash with the voltage grids rising, the phone operates normally.
3. After charging when turning off, the screen will display "Finish charging"; In case of charging when turning on, the battery prompt icon will not flash.
4. Disconnect the charger from the power supply and phone.
5. Please adopt the charger approved by xxx manufacturer, and refer to charger manual prior to use.

### 1.3 Your phone

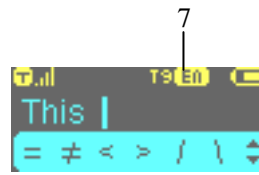


#### 1. 4 Definitions of Buttons



<b>Send/OK key</b>	<p><b>Idle mode:</b> enter into the main menu screen  Long press it to enter into Dialed calls list screen</p> <p><b>Menu mode:</b> pop-up menu, select menu or confirm options</p> <p><b>Editing mode:</b> confirm the inputted character</p>
<b>Power/Cancel key</b>	<p>Press and hold power/Cancel key to turn on/off the phone</p> <p><b>Idle mode:</b> lighten backlight of LCD</p> <p><b>Menu mode:</b> back to the previous screen</p> <p><b>Editing mode:</b> clear off text and characters</p>
<b>Up key</b>	<p><b>Idle mode:</b> default enter into All contacts list screen  Long press it to set phone mode as Meeting mode</p> <p><b>Menu mode:</b> scroll the menu upward</p> <p><b>Editing mode:</b> cursor rightward</p>
<b>Down key</b>	<p><b>Idle mode:</b> default enter into Create new SMS screen  Long press it enter into Music player screen</p> <p><b>Menu mode:</b> scroll the menu downward</p> <p><b>Editing mode:</b> cursor leftward</p>
<b>Letter/number key</b>	<p><b>Idle mode:</b> press it to input 0-9  Long press [<b>Number key 1</b>] to dial out Voice mail  Long press [<b>Number key 2-9</b>] to fast dial the responding numbers set  Long press [<b>Number key 0</b>] to input “+”</p> <p><b>Menu mode:</b> press it to enter into the corresponding menu option</p> <p><b>Editing mode:</b> press it to input responding numbers or letters  Press [<b>Number key 1</b>] to change sub mode among Abc, abc, ABC in the T9 English and Abc input method</p>
<b>* key</b>	<p><b>Idle mode:</b> press it to input “*”  Long press to lock keypad</p> <p><b>Edit mode:</b> Change the input mode</p>
<b># key</b>	<p><b>Idle mode:</b> press it to input “#”  Long press it to input suspended dialing symbol “P”</p> <p><b>Editing mode:</b> press it to display general symbols  Long press it to move cursor to the next line or new line</p>

## 1.5 Status Icons



Text editor screen

SN	Meaning	Simple description	Icon
1	Signal strength status	Signal strength, no SIM	
		Signal strength, Level 0-4	
2	SMS status	New SMS	
		SMS full	
3	USB connection	Display USB data line connected	
4	Alarm clock	Initiate the alarm clock	
5	Phone mode	Normal mode	
		Meeting mode	
		Outdoor mode	
		Driver mode	
6	Battery status	Battery status 1-4	
		Low battery status	
		Charging status	
7	Input method in the text editor screen	T9 English Abc	
		T9 English abc	
		T9 English ABC	
		Abc	
		abc	
		ABC	
		123	



## 2. Basic Functions



**Caution** the phone supports only voice call in WCDMA network or in GSM network.

### 2.1 Switch the phone On/Off

◆ **Power on** Press [**Power/Cancel**] key for more than 3 seconds to power on phone while seeing power-on animation or text. Then the phone will prompt you to input PIN (personal identity number) code if applicable. It will prompt you to input the lock password if applicable.

◆ **Power off** Hold [**Power/Cancel**] key for seconds until you see the power-off picture.

### 2.2 PIN and PUK Codes

#### ◆ PIN Code and PIN2 Code

**PIN code:** Avoid unauthorized use of SIM card. If initiating the power-on PIN code function, the phone will require the PIN code when powered on, SIM card will be automatically locked and display the lock prompt when inputting three wrong PIN codes. The PIN code is 4 to 8 digits

**PIN2 code:** The PIN2 code may be supplied with the SIM card and is required for some functions. The PIN2 code is 4 to 8 digits.

#### ◆ PUK Code and PUK2 Code

**PUK code:** when modifying locked PIN code, phone requires PUK (personal unlocking key) code that is issued with SIM card. Please contact with the service provider for PUK code otherwise. In case of inputting 10 wrong PUK codes in a row, the SIM card will be permanently locked. Users are prohibited from changing PUK code; users should contact the service provider for lost PUK code. The PUK code is 8 digits

**PUK2 code:** PUK2 code is not supplied with SIM card, it is needed when modifying the locked PIN2 code. If inputting 10 wrong PUK2 codes in a row, the user is prohibited permanently to use the menu options of PIN2 code.

### 2.3 Outgoing Call

◆ **Number Keys** Enter the phone number in the idle screen with number keys, then press [**Send/OK**] key, then select menu [**Call**] to dial the inputted numbers.

#### ◆ **Fast dial**

On idle screen, hold “1” to dial voice mail.

On idle screen, hold number keys 2-9, directly voice call the corresponding phone number which you have linked number keys 2-9 to in setting application

#### ◆ **Dial from phonebook:**

Search for a number in the phonebook, press [**Send/OK**] key, then select menu [Call] to dial the stored number.

#### ◆ **Dial the number through Log**

Search for the call lists in Log, press [**Send/OK**] key, then select menu [Call] to dial the stored number.

#### ◆ **Dial international call**

Add international call prefix “+” in front of the number (pressing “0” for seconds, “+” will display on the number column, then input nation code and telephone number, press [**Send/OK**] key for the call.

#### ◆ **Directly dial extension number**

The mobile phone permits direct dialing of extension number or voice mail. You can insert a suspension symbol “P” between the phone number and extension number. In this case, the mobile phone will suspend the dialing of extension number until the response of the receiving party. The “P” shall be inserted as below:

1. In general dialing practice, input the telephone exchange number, then hold “#” key to input “P”, then extension number.
2. Then press [**Send/OK**] key to select menu [Call], mobile phone will automatically dial the extension number when connected with the telephone exchange.

#### ◆ **Emergency call**

Your service provider configures your mobile phone with one or more than one emergency numbers (e.g. 112). In the service coverage area, the users can input the emergency number, and then press the [**Send/OK**] key to call emergency numbers even without the SIM card after selecting menu [Call].



**Caution** the function entails the network support.

## 2.4 Answer Calls


The mobile phone will ring or vibrate when incoming calls, answer calls by pressing [**Send/OK**] key. If configured any-key answer function, you can press any key except [**Power/Cancel**] to answer calls. The received numbers are stored in the received calls.




**Caution** if you have inserted the earphone Handset Connector, you can press the button on it to answer incoming calls, when the keys of the mobile phone can still normally operate.

## 2.5 Reject Calls

Press [**Power/Cancel**] to reject incoming calls.

 **Caution** If you have inserted the earphone Handset Connector, long press the button on earphone Handset can reject incoming calls.

## 2.6 Functions in Voice call

 **Caution** The function depends on the support of network service provider and whether you have registered the function.

During voice calling, you can conduct many operations. Press [**Send/OK**] to enter into the menu list, displaying Speaker on/off, SMS, Phone book, Mute/Resume.

### **SPEAKER ON/OFF**

During voice calling, press [**Send/OK**] to enter menu list screen. If selecting [Speaker on], the sound path will be changed to speaker; If selecting [Speaker off], the sound path will be changed to receiver.

#### ◆ **SMS**

During voice calling, press [**Send/OK**] to enter menu list screen. If selecting [SMS], you can enter SMS application to conduct relevant operations.

#### ◆ **Mute/Unmute**

During voice calling, press [**Send/OK**] to enter menu list screen. If selecting [Mute], the voice call will be silenced; If selecting [Unmute], the voice call will be resumed.

#### ◆ **Phone book**

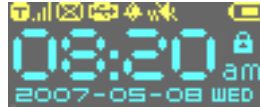
During voice calling, press [**Send/OK**] to enter menu list screen. If selecting [Phone book], you can enter phone book application to conduct relevant operations.

## 2.7 LED

- ◆ When LED twinkle, it means that there is Missed call or New SMS;
- ◆ When LED light as blue, it means that phone is used as modem;
- ◆ When LED light as green, it means that phone is used as U-Disk.

## 3. Main Menu

Press [**Send/OK**] key in the idle screen.



In the main menu, select the 6 options by [**Up/Down**] key:

<b>1. Phone book</b>
<b>2. SMS</b>
<b>3. Music</b>
<b>4. Log</b>
<b>5. Settings</b>
<b>6. Alarm</b>

Press [**Up/Down**] key to switch over the sub-menus, then press [**Send/OK**] or relevant number key for confirmation.

### 3.1 Phone book

Phone book contains contacts saved in phone and SIM card. The methods to enter Phone book as following:

1. In the idle screen, press [**Up**] key enter into All contacts list screen.
2. In the main menu mode, press [**Up/Down**] key to scroll to [**1. Phone book**], then press [**Send/OK**] key for confirmation (or directly press [**Number key 1**] key), enter into Phone book main screen.

The contact list records the information of contacts, including name and number, and the contact information is for calling and sending message.

You can store contact to the phone storage (internal phone book) or SIM card (SIM phone book).

#### 1. All contacts

Display all contacts stored in the Phone and SIM card, and each contact show the inclusive information Name and Number.

Press [**Up/Down**] key to display contact items; press [**Send/OK**] key for pop-up menu, and press [**up/Down**] key for scrolling selection of Call, Send SMS, View number, Edit, Copy, Delete.

- **Call:** Make voice call to the selected contact
- **Send SMS:** Send SMS to selected contact
- **View number:** View the number of the selected contact
- **Edit:** Enter text editor to edit name firstly, then enter number editor to edit number
- **Delete:** Delete the selected contact
- **Copy:** For Phone contact, copy it to SIM card; for SIM contact, copy it to phone

Press [Number key 0-9] to execute **Quick selection** function as following:

- [Number key 0]: Display the contact whose name begins with symbol.
- [Number key 1]: Display the contact whose name begins with number.
- [Number key 2-9]: Display the contact the contact whose name begins with responding letter a-z. For example:

- 1) Firstly press [Number key 2], display the contact whose name begins with letter “a”;
- 2) Secondly press [Number key 2], display the contact whose name begin with letter “b”;
- 3) Thirdly press [Number key 2], display the contact whose name begin with letter “c”;
- 4) Fourthly press [Number key 2], display to the contact whose name begin with letter “a”.

If interval which you press number keys more than 1 second, it will show the contact whose name begin with letter “a” again.

## 2. New contact

You can add new contact to phone or SIM card, according to the setting of [Storage type]. When you select to add new contact, enter text editor to input name of this new contact firstly; after input name, press [Send/OK] key enter number editor screen to input number of this new contact; after input number, press [Send/OK] key to save this new contact. If you don't input number, this contact can't be saved. However the name item can be empty.

## 3. Find

You can find contacts by the following ways:

- **Find by name:** Input characters in the text editing window, search for the contacts whose name matched the inputted contents.
- **Find by number:** Input numbers in the number editing window, search for the contacts whose numbers matched the inputted contents.

## 4. Storage type

You can set storage type as Phone or SIM.

- **Phone:** When you add contact, the new contact will be added to phone automatically.
- **SIM:** When you add contact, the new contact will be added to SIM automatically.

## 5. Copy all

- **From phone to SIM:** Copy all phone contacts to SIM card
- **From SIM to phone:** Copy all SIM contacts to phone

## 6. Delete all

- **Phone contacts:** Delete all contacts saved in phone
- **Phone contacts:** Delete all contacts saved in SIM card

## 7. Memory status

The mobile phone is equipped with memory status inquiry function to enable you to understand the operation status of the mobile phone. The storage status inquiry primarily covers recording capacity in SIM card and phone.

## 3.2 SMS

The methods to enter SMS as following:

1. In the idle screen, press [**Down**] key enter into create new SMS screen.
2. In the main menu mode, press [**Up/Down**] key to scroll to [**2. SMS**], then press [**Send/OK**] key for confirmation (or directly press [**Number key 2**] key), enter into SMS main screen.

### 1. New

You select [**New**] to create new SMS.

Enter text editor to input SMS content first, after edit content, press [**Send/OK**] key for pop-up menu, and press [**up/Down**] key for scrolling selection of Phone book, Edit number, Save.

- **Phone book:** Enter phone book all contacts list to select a contact as receiver, then press [**Send/OK**] key to send SMS to this contact
- **Edit number:** Enter number editor to edit new number as receiver, then press [**Send/OK**] key to send SMS to this number
- **Save:** Save this SMS to the [**Drafts**]

In idle mode, press [**Down**] key to create new SMS also.

### 2. Read SMS

In SMS main screen, select [**2 Inbox**], [**3 Drafts**], [**4 Outbox**], [**5 Sent**] menu, enter into the message list; press [**Up/Down**] key for scrolling list inquiry. Press [**Send/OK**] to read the message and relevant information, such as receiving number and sending number, date and time.

- **Inbox:** Store the received messages, press [**Send/OK**] key to read message detail. In the message detail screen, press [**Send/OK**] key for pop-up menu, Reply, Delete, Forward, Save number, Call

**Reply:** Reply the selected message

**Delete:** Delete the selected message from Inbox

**Forward:** Forward the selected message

**Save number:** Save the number of sender into phone book

**Call:** Make voice call to the sender

— **Drafts:** Store messages for future use, press [**Send/OK**] key for pop-up menu, Edit, Delete

**Edit:** Edit the selected message detail

**Delete:** Delete the selected message from Drafts

— **Outbox:** Store messages sent failed, press [**Send/OK**] key to read message detail. In the message detail screen, press [**Send/OK**] key for pop-up menu, Resend, Forward, Delete

**Resend:** Resend the selected message

**Forward:** Forward the selected message

**Delete:** Delete the selected message from the Outbox

— **Sent:** Store the messages sent out successfully, press [**Send/OK**] key to read message detail. In the message detail screen, press [**Send/OK**] key for pop-up menu, Forward, Delete, Call

**Forward:** Forward the selected message

**Delete:** delete the selected message from the Sent

**Call:** Make voice call to the receiver

### 3. Voice mail

By “voice mail” function, you may forward the incoming calls to the voice mail center, and the calling party can leave a message in the mailbox, then you will receive the notice message. The service provider can provide such number to you, and you can configure and modify the number.

### 4. Settings

Short message setting, including short message service center, short message valid term, status report and storage type.

— **Service centre:** The number is provided by mobile phone service provider. Once you key in a short message service center number, the number will be displayed on the screen; you can modify or delete the number; you shall first key in the number with such option prior to sending short message.

— **Expire period:** Setting of message validity term to determine the stay duration in the message center prior to deletion, e.g. 1 hour, 6 hours, 1 day, 3 days, 1 week and the maximum.

— **Status report:** Activate or deactivate report function; when activated, the network will notify you the message sending status.

- **Storage type:** Select short message storage type: SIM card and Phone; if you select SIM card storage, the short message will be automatically stored to SIM card.

## 5. Memory status

Display free room you can store and total room in SIM card and Phone.

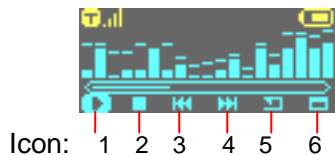
## 3.3 Music

The methods to enter Music as following:

1. In the idle screen, long press [**Down**] key enter Music screen.
2. In the main menu mode, press [**Up/Down**] key to scroll to [**3. Music**], then press [**Send/OK**] key for confirmation (or directly press [**Number key 3**] key), enter into Music main screen.

### 1. Play

You select this menu item to enter play music screen as following.



In the music playing screen, you can press [**Up/Down**] key to scroll cursor among above 6 icons, and press [**Send/OK**] key to execute the function of selected icon.

- **Icon 1** : Play music  
 : Pause music in the playing status
- **Icon 2** : Stop music playing
- **Icon 3** : Play the previous music
- **Icon 4** : Play the next music
- **Icon 5** / / : Switch playing mode among Single loop/ Loop all/ Random
- **Icon 6** : Display the file's property, including Name, Format, Date, time and Size

**Adjust volume:** Long press [**Up/Down**] key to adjust the volume in the playing screen.

**Background playing:** In the playing status, pressing [**Power/Cancel**] key can exit playing screen and start background playing. In the background playing status, you can enter playing screen to select **Icon 2** to stop background playing.

### 2. View list

Show the music files list saved in the phone, press [**Send/OK**] for pop-up menu to execute the following functions to the selected file.

- **Play:** Enter play music screen to play the selected file
- **Delete:** Delete the selected file
- **Property:** Display the file's property, including Name, Format, Date, time and Size



### 3. Memory status

Show the phone memory status info, including Capacity, Free and number of Music file.

### 4. Delete all

Delete all music files saved in phone, mean that files in the [**View list**]

## 3.4 Log

The methods to enter Log as following:

1. In the idle screen, long press [**Send/OK**] key enter into Dialed calls list screen.
2. In the main menu mode, press [**Up/Down**] key to scroll to [**4. Log**], then press [**Send/OK**] key for confirmation (or directly press [**Number key 4**] key), enter into Log main screen.

The session records the missed calls, received calls, dialed calls, call duration and packet data counter.

### 1. Missed calls/Received calls/Dialed calls

You can enter call list screen to view the missed calls, received calls or dialed calls , press [**Send/OK**] for pop-up menu to execute the functions like **Call, Send SMS, Save, Delete, Delete all, View detail**.

- **Call**: Make Voice call to the selected number.
- **Send SMS**: Send SMS to selected numbers.
- **Save**: Store desired contents to the phone book.
- **Delete**: Delete undesired contents.
- **Delete all**: Delete all contents in the contact list.
- **View detail**: View detailed information including name, number, time, date and during.

### 2. Call duration

This item shows the all duration of last call, received call, dialed call and total call. You can select [**Clear all**] to set the call duration as 00:00:00.

### 3. Packet data counter

This item shows the packet data of network, include sent data and received data. You can select [**Clear all**] to set sent data and received data as 0 KB.

## 3.5 Settings

The default configuration of your mobile phone will enable to use the functions immediately after inserting SIM card. For more needs and application modes, this mobile phone allows you to define and change the setting for your habits to meet senior

communication needs.

In the idle screen, press [**Send/OK**] to enter into the main menu. Press [**Up/Down**] key to scroll to [**5.Settings**], and then press [**Send/OK**] for confirmation (or press [**Number key 5**]).

The system settings menu includes:

1. Date and time
2. Phone mode
3. U-Disk mode
4. Backlight timer
5. Enhancement settings
6. Calls
7. Security
8. Network
9. Reset settings
0. Clear all

Each setting covers multiple setting items allowing selecting or inputting setting values, which create the automatic control of the phone.

## 1) Date and time

Configure time and date and the formats by [**Up/Down**] key. Press [**Send/OK**] to determine the modification contents.

- **Set time**: Allows input of correct time;
- **Set date**: Allows input of correct date;
- **Set time format**: Adjust the date display format in 12/24-hour system.

## 2) Phone modes

In the scene mode screen, select an option among **Normal mode**, **Meeting mode**, **Outdoor mode** or **Drive mode**. Then the mobile phone will follow the selected mode in operation. Pressing [**Send/OK**] can select activate or edit the highlight item as following.

### 1. Normal

In the scene mode screen, select the desired working mode, then configure the parameters as per your personal taste, including the following setting items:

- **Ring volume** Adjust the tone volume
- **Message volume** Adjust the information prompt volume;
- **Keypad volume** Adjust the volume of key pressing;
- **Voice call ring tone** Select voice calls ring tone;
- **Message ring tone** Select Message ring tone;
- **Vibration pattern** 3 types, or "Off";
- **Coverage tone** Configure coverage tone on/off.

Note:

Meeting mode, Outdoor mode or Drive mode setting items is the same as Normal mode.

### 3) U-Disk mode

In the U-Disk mode, after insert USB cable, you can use the phone as U-Disk.

### 4) Backlight timer

Configure the setting of backlight duration.

### 5) Enhancement settings

Enhancement settings can configure the setting of Headset and Charger

- **Headset:** Configure the setting of Headset for phone mode and Automatic answer.
- **Charger:** Configure the setting of Charger for phone mode.

### 6) Calls

1. **Call divert:** a network function for forwarding the call to designated phone as requested by the user.

Upon the setting, mobile phone requires you to input the designated number to receive the call. If failing to receive the transferred call, please check the destination number.

- **Divert always:** With the setting, all incoming calls will be transferred to designated number.
- **On busy:** With setting, the incoming calls will be transferred to designated number when mobile phone is busy.
- **No reply:** With this setting, the incoming calls will be transferred to designated number when mobile phone does not respond.
- **Unreachable:** With this setting, the incoming calls will be transferred to designated number when mobile phone upon failure of connection (e.g. poor network signal or poor signaling environment).
- **Cancel all:** With this setting, the transfer setting will be cancelled.

2. **Call barring:** You can configure the following call prohibitions to help enhance the safety; the network operator provides a 4-digit password to you for prohibiting calls.

- **All outgoing:** Prohibit all outgoing calls.
- **Int'l call:** Prohibit international call.
- **Int'l calls except to home:** Prohibit dialing of local number when overseas roaming.
- **All incoming:** Prohibit all incoming calls.
- **Incoming calls when abroad:** Prohibit all incoming calls upon roaming.
- **Cancel all:** Cancel all restrictions when inputting restriction password.

- **Change password:** First input the existing code, then the new codes twice.
- 3. **Caller ID:** Restrict the calling number display, including 3 items, i.e. Default, Display number and Hide number.
- 4. **Any key answer:** Configure whether to respond to incoming calls by any key.
- 5. **Fast dial:** Configure number keys 2-9 to fixed number stored in SIM card or mobile phone for directly dial by holding number keys on idle mode.
  - 💡 **Caution:** If you dial an empty number, i.e. not stored in SIM card or mobile phone, the mobile phone will prompt “No matching contact”.
- 6. **Auto redial:** Whether to permit re-dial; if shutting off this function, mobile phone will not re-dial in case of connection failure.
- 7. **Alert tone:** Include two items, i.e. connection, minutes alert.
  - **Connection:** Setting of connection on or off.
  - **Minutes alert:** Setting of minutes alert on or off.

## 7) Security

Safety setting can configure and modify passwords and options to prevent non-authorized use of mobile phone and restriction of mobile phone use, including initiating PIN code, modifying PIN code, power-on locking, modifying mobile phone lock password, present locking.

- **PIN activate:** With PIN code function, input the PIN code upon power on. In case of inputting three wrong PIN codes in a row, the SIM card will be automatically locked and display the locking information.
- **Change PINs:** Modify PIN code, PIN2 code. PIN code can prevent unauthorized use of SIM card. Generally, PIN2 code is not provided with SIM card, as it provides special network service.
- **Power on lock:** With the power-on locking function, input the password when powering on.
- **Phone lock:** Lock mobile phone to prevent mobile phone data disclosure; use the mobile phone by inputting password. Initial phone lock code is 1234.
- **Change security code:** First input the existing code, then the new codes twice.

## 8) Network

The menu has 4 options, i.e. select mode, new searching, priority network and access networks order.

### 1. Search type:

- **Automatic:** Upon power-on, mobile phone will register to the first service network in the network sequence list, and will attempt the next upon any failure.
- **Manual:** First retrieve all networks and recognize the registration icons of each

network; then select one network for registration, mobile phone will automatically register into the next network upon failure.

**2. New search:** Retrieve all networks and recognize the registration icons of each network; then select one network for registration.

**3. Preferred network:** In the network list, you can operate the listed networks; select “priority network” in the “network service”, enter into the priority network display to display priority network list, you may browse through the network details, insert new priority network to the end of the list; meanwhile you can delete the priority network from the list.

**4. Network mode:** Provide the selection of network access orders, including Automatic, WCDMA only and GSM only.

### 9) Reset settings

Select the option; you can restore the mobile phone settings to ex-work setting.

### 0) Clear all

Select the option; you can clear all data and restore the mobile phone settings to ex-work setting.

## 3.6 Alarm

In the idle screen, press [**Send/OK**] to enter into the main menu. Press [**Up/Down**] key to scroll to [**6. Alarm**], and then press [**Send/OK**] for confirmation (or press [**Number key 6**]).

You can select the alarm for specific setting.

- **Set time:** Set alarm ring time.
- **Status:** Activate or deactivate alarm.
- **Period:** Set alarm period: select [**Once /Everyday/Workday/Weekend**].
- **Ring:** Change the prompt tone of alarm.
- **Snooze:** Set the time that alarm ring again, you can select [**Off/1 minute/5 minutes/10 minutes**]

At the alarm time, the mobile phone will play the event tone (if configured) and the prompt picture; you can press [**Send/OK**] key to view the alarm.

The above function is available when mobile phone is turned on.

## 4. Reference Information

### Input Text

The mobile phone provides many kinds of expedient text input methods matching other functions, including T9 English, ABC, 123 input methods. You can press [\*] key to switch input method.

#### General instructions

Key	Letter
Num 2	a b c
Num 3	d e f
Num 4	g h i
Num 5	j k l
Num 6	m n o
Num 7	p q r s
Num 8	t u v
Num 9	w x y z

#### ◆ T9 English

The T9 English method uses a built-in dictionary to recognize the most commonly used word for each sequence of key presses. This way, you press each key only once, even if the letter you want is not the first letter on the key.

In T9 English mode, press **Num key [2-9]** containing the required letters to input word, one screen displays one English word.

Press [**Up/Down**] key to display the previous/next word circularly. Press [**Send/OK**] key for confirmation, the word will be displayed on the cursor of the input column.

Press [**Num 1**] key to switch over the sub mode among "Abc", "abc" and "ABC".

Press [**Num 0**] key to input special symbol in turn as: Space , . ? ! : " @ + 0

#### ◆ ABC

ABC is multi-tap text input method. You press each key as many times as needed to show the letter you want. For example: If you want to input "c", you should press [**Num 2**] key three times.

Input letters by number keys on the keyboard, the letters will display on the cursor of the input column.

Press [**Num 1**] key to switch over the sub mode among "Abc", "abc" and "ABC".

Press [**Num 0**] key to input special symbol in turn as: Space , . ? ! : " @ + 0

#### ◆ 123

Input the numbers by [**Number key 0-9**] on the keyboard.

#### ◆ Symbol

In the text input screen, press **[# key]** to enter into the symbol input mode, select more symbols by **[Up/Down]** key, and input the symbols by **[Send/OK]** key.

## 5. Accessory

### Charger

- It will charge the Li-ION battery quickly and completely. The charge duration varies subject to the capacity of battery.

### Li-ION battery (one piece)

- The Li-ION battery 780mAh can provide standby duration lasting for 150-270 hours.
- For 2.5G, the call duration is 100-220mins; For 2.5G, the call duration is 47-120mins

**\*Specific standby & call duration shall be determined subject to the actual condition for the use.**



### Caution

**Only approved battery, charger and other accessories by mobile phone manufacturer may be used. And the use of other types of accessories will infringe the quality certification and maintenance license for this mobile phone and leads to dangers.**

### USB data cable connection

- In order to synchronize data or communicate between your phone and the compatible PC, You can connect them through a USB data cable.

### Headset

- Provide a volume control jog dial and a Send/End button. You can use the button to pick up or hang up incoming and outgoing calls.

### PC suite CD

- Provide a PC synchronize software in a companion CD that came with your phone. You can synchronize contacts, messages and logs between your phone and PC after installing the PC synchronize software.



# Repair Guideline

You are welcome to use the mobile phone produced by TOSHIBA. In case of any problem of mobile phone in use, please contact the distributor or TOSHIBA repair center. In case of repair, please send your mobile phone to local repair station (see the Warranty Certificate attached with mobile phone); in case of no repair station locally, please send your mobile phone and duplicate invoice to the distributor for EMS.

To inquire about the latest repair outlet and replacement center address, please contact TOSHIBA, or <http://www.TOSHIBA.com>

<b>Common problems</b>	<b>Potential causes</b>	<b>Solution</b>
1. Weak signals	Far away from base station or strong insulation	Get near the windows or corridors.
2. The screen will display "no card" or "invalid card"	Possibly dirty contact pad of SIM card	Gently clean the contact pad of SIM card.
3. Battery charged full holds short	Possibly configured power-on backlight, to consume high electricity	Re-configure backlight mode
4. Silent headphone	Possibly configured minimum volume	Adjust the volume by up/down volume key
5. Only vibration no ring upon incoming call	Possibly configure the mobile phone as Meeting mode	Re-configure "Normal mode"