

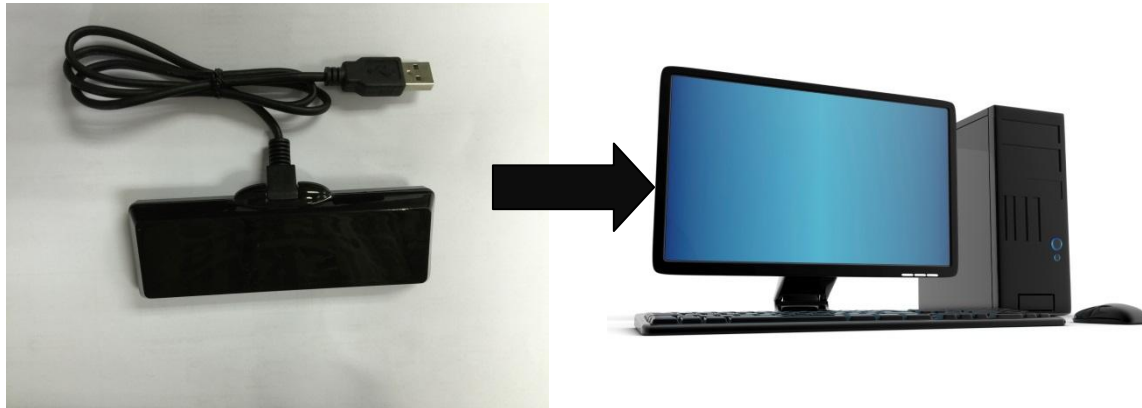
Model: 700773-001

Product Name: RF MODULE

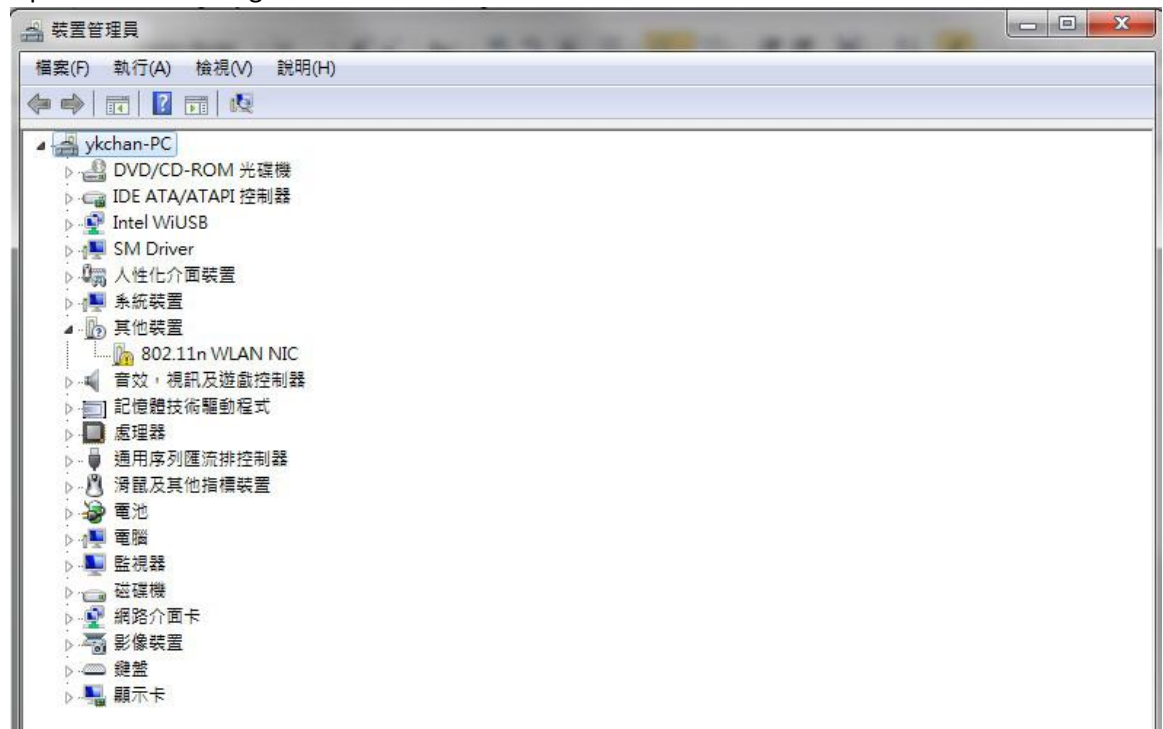
User's Manual

A. Installation

1. Plug the USB cable to a USB port of your computer.



2. Depends on the operating system on the computer, install the appropriate WIFI software driver
 - a. User can follow the below steps to install driver
 - b. Connect the RF module to PC through USB.
 - c. Open "Device Manager" in Windows



- d. In “Other Device”, user should see a “802.11n WLAN NIC” device as shown above. Right click the device and select “Driver update”
- e. From the driver files provided, select the corresponding driver according to the OS.
- f. Follow the on screen instruction to complete driver update.
- g. User can connect to WiFi networks when driver update completed.

B. Testing the Product:

1. WIFI function: On the computer, select this WIFI device for connecting to your 802.11b/g/n network

FCC Statement

This equipment has been tested and found to comply with the limits for a Class B digital device, pursuant to part 15 of FCC Rules. These limits are designed to provide reasonable protection against harmful interference in a residential installation. This equipment generates and can radiate radio frequency energy and, if not installed and used in accordance with the instructions, may cause harmful interference to radio communications. However, there is no guarantee that interference will not occur in a particular installation. If this equipment does cause harmful interference to radio or television reception, which can be determined by turning the equipment off and on, the user is encouraged to try to correct the interference by one or more of the following measures:

Reorient or relocate the receiving antenna.

Increase the separation between the equipment and receiver.

Connect the equipment into an outlet on a circuit different from that to which the receiver is connected.

Consult the dealer or an experienced radio/TV technician for help.

This device complies with Part 15 of FCC Rules. Operation is subject to the following two conditions: (1) This device may not cause harmful interference, and (2) This device must accept any interference received, including interference that may cause undesired operation.

Note: The manufacturer is not responsible for any radio or TV interference caused by unauthorized modifications to this equipment. Such modifications could void the user's authority to operate this equipment.

IC Compliance

This device complies with Industry Canada license - exempt RSS standard(s). Operation is subject to the following two conditions: (1) this device may not cause interference, and (2) this device must accept any interference, including interference that may cause undesired operation of the device.

Le présent appareil est conforme aux CNR d'Industrie Canada applicables aux appareils radio exempts de licence. L'exploitation est autorisée aux deux conditions suivantes: (1) l'appareil ne doit pas produire de brouillage, et (2) l'utilisateur de l'appareil doit accepter tout brouillage radioélectrique subi, même si le brouillage est susceptible d'en compromettre le fonctionnement.

RF Radiation Exposure Statement

The device has been evaluated to meet FCC and RSS-102 general RF exposure requirement. The device can be used in should be installed and operated with a minimum distance of 20 centimeters between the radiator and your body.