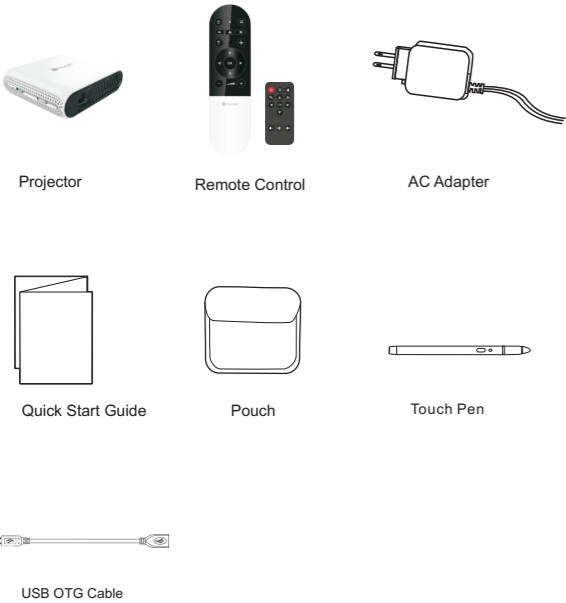


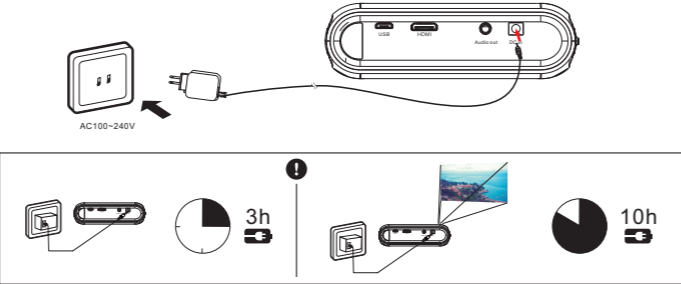
Package Contents



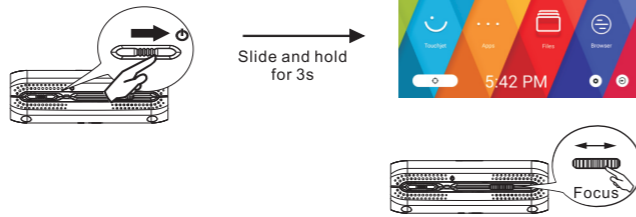
NOTE: IMAGES ARE FOR ILLUSTRATION PURPOSES ONLY.

1

Battery Charge

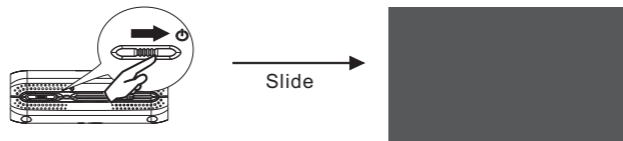


Turn On the Device



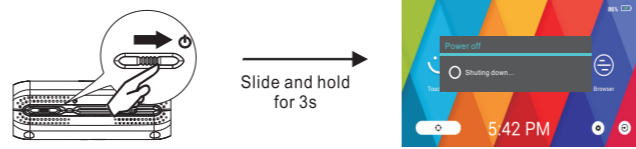
Sleep mode(when projector is on)

Slide once to enter sleep mode, slide again to awake.

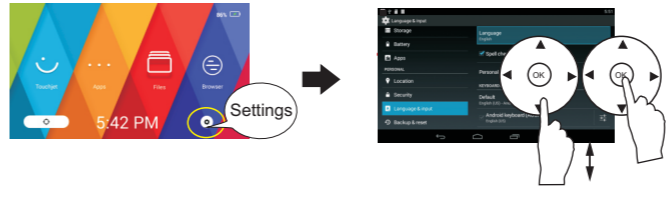


2

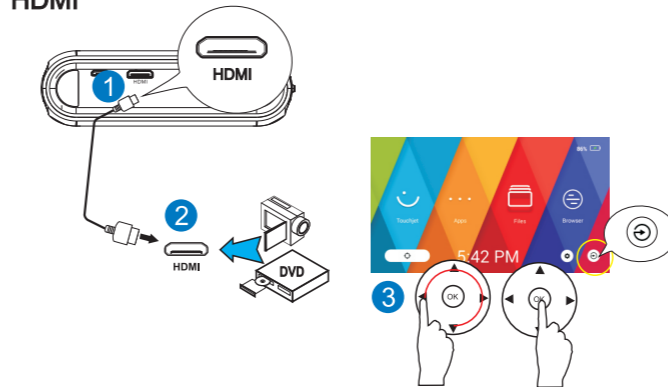
Turn off the device(when projector is on)



Select OSD Language

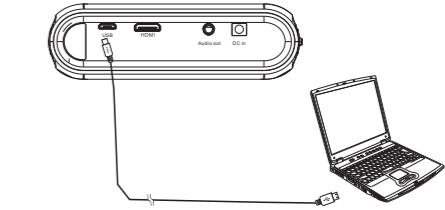


HDMI

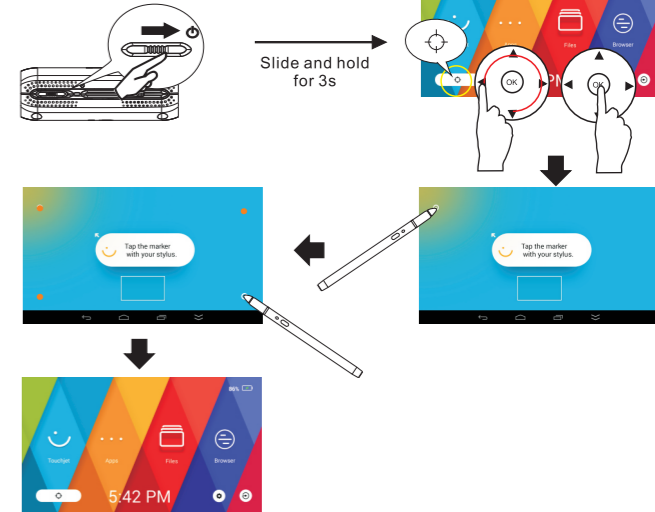


3

USB

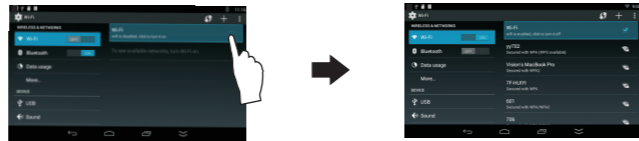


Touch Pen Calibration



4

Turn on WiFi



How to Use Bluetooth

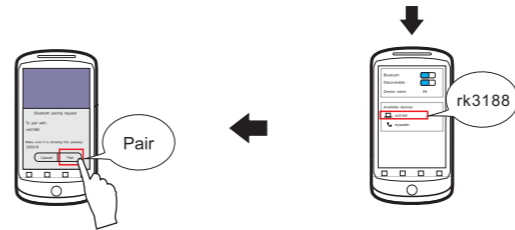
- ① Open Bluetooth in the settings of the projector



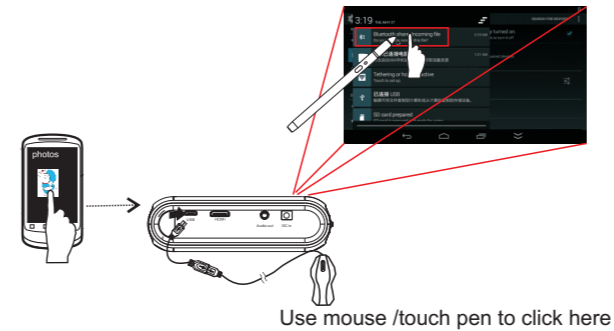
- ② Pair with smartphone



5



- ③ Send files using Bluetooth



- ④ Click "Accept" to receive file



TP1



Quick Start Guide

NOTE: This equipment has been tested and found to comply with the limits for a Class B digital device, pursuant to part 15 of the FCC Rules. These limits are designed to provide reasonable protection against harmful interference in a residential installation. This equipment generates, uses and can radiate radio frequency energy and, if not installed and used in accordance with the instructions, may cause harmful interference to radio communications. However, there is no guarantee that interference will not occur in a particular installation. If this equipment does cause harmful interference to radio or television reception, which can be determined by turning the equipment off and on, the user is encouraged to try to correct the interference by one or more of the following measures:

- Reorient or relocate the receiving antenna.
- Increase the separation between the equipment and receiver.
- Connect the equipment into an outlet on a circuit different from that to which the receiver is connected.
- Consult the dealer or an experienced radio/TV technician for help.

This device complies with part 15 of the FCC rules. Operation is subject to the following two conditions:

- (1) this device may not cause harmful interference, and
- (2) this device must accept any interference received, including interference that may cause undesired operation.

Changes or modifications to this unit not expressly approved by the party responsible for compliance could void the user's authority to operate the equipment.