



- Input voltage: 12V(DC115I is 3V)
- Emission Frequency: 433.914MHz ± 100KHz
- Emission Power: 10 milliwatt
- Work temperature: -10°C - 50°C
- Emission distance: open 200m, two walls 30m
- Components button (P2)(up button+ stop button) is setting button, it's valid that press two button at the same time.
- Transmitter (▲) UP BUTTON
- Transmitter (■) STOP BUTTON
- Transmitter (▼) DOWN BUTTON

DC115A(B/C/D/F/I/J) DC14 DC61(S) DC141 DC279

DC115A(B/C/D/F/I/J) single channel transmitter
 DC14 single channel transmitter
 DC61(S) single channel transmitter
 DC141 single channel transmitter
 DC279 single channel transmitter

Notice: transmitter Do not exposed to moisture and strike, so as not to affect life.
 When you use transmitter, if found emission distance obviously short or less sensitive, please change another same new battery. Please have batteries for recycling.



All controls support 433MHz & 868MHz
 All controls support 12V/23A & 12V/27A
 Specific parameters to the nameplate shall prevail

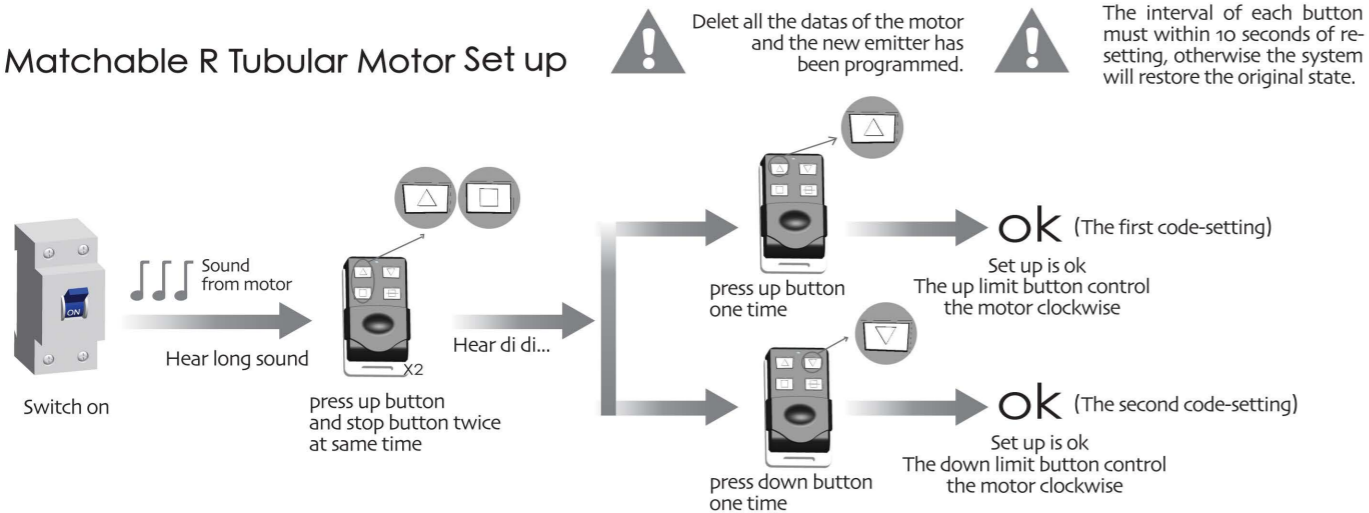


DC115A(B/C/D/F/I/J)DC14 DC61(S) DC141 DC279 Control System Specification



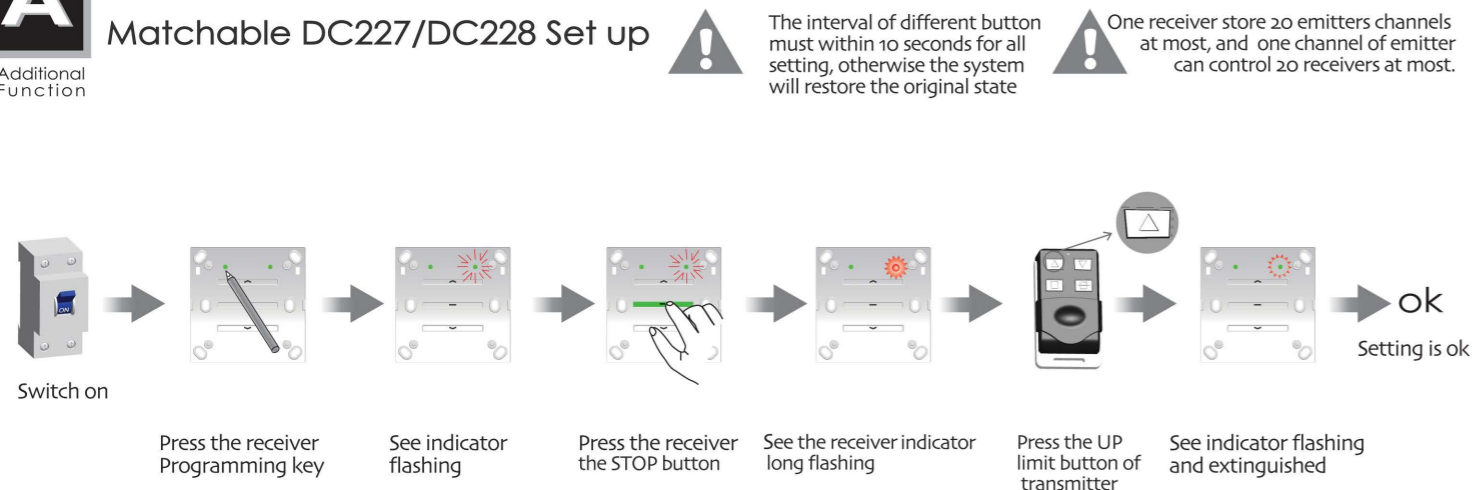
Matchable R Tubular Motor Set up

Additional Function



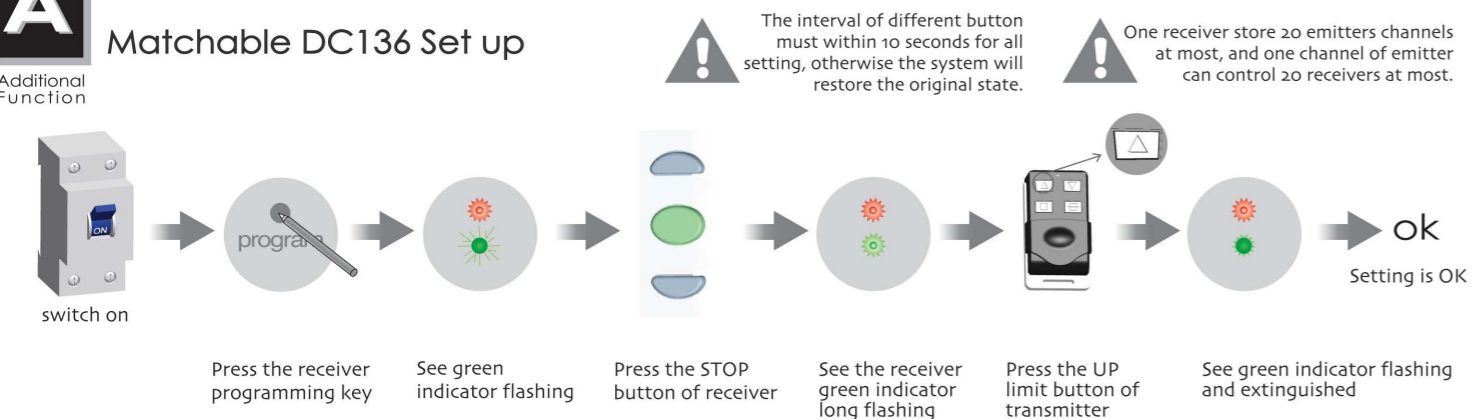
Matchable DC227/DC228 Set up

Additional Function



Matchable DC136 Set up

Additional Function



Type Specification

The self-lock key of this series can only be applied to the DC43 and DC136.

| | | |
|---|--|---|
| <p>! DC115D no self-lock function</p> <p>up button, stop button, down button, lock button</p> <p>DC115A(D)(F)(I)(J)</p> | <p>DC115B</p> | <p>up button, stop button, lock button, down button</p> <p>DC115C</p> |
| <p>up button, stop button, down button, lock button</p> <p>DC61(S)</p> | <p>up button, stop button, down button, lock button</p> <p>DC141</p> | <p>up button, stop button, lock button, down button</p> <p>DC279</p> |

This device complies with part 15 of the FCC Rules. Operation is subject to the following two conditions:

(1) This device may not cause harmful interference, and (2) this device must accept any interference received, including interference that may cause undesired operation.

Note: This equipment has been tested and found to comply with the limits for a Class B digital device, pursuant to part 15 of the FCC Rules. These limits are designed to provide reasonable protection against harmful interference in a residential installation. This equipment generates, uses and can radiate radio frequency energy and, if not installed and used in accordance with the instructions, may cause harmful interference to radio communications. However, there is no guarantee that interference will not occur in a particular installation. If this equipment does cause harmful interference to radio or television reception, which can be determined by turning the equipment off and on, the user is encouraged to try to correct the interference by one or more of the following measures:

- Reorient or relocate the receiving antenna.
- Increase the separation between the equipment and receiver.
- Connect the equipment into an outlet on a circuit different from that to which the receiver is connected.
- Consult the dealer or an experienced radio/TV technician for help.

Note: The Grantee is not responsible for any changes or modifications not expressly approved by the party responsible for compliance. such modifications could void the user's authority to operate the equipment.