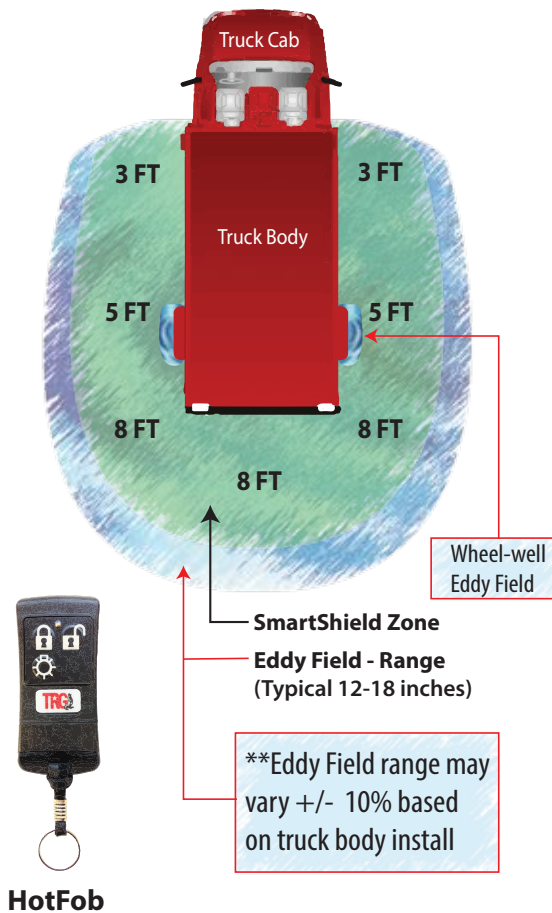


LATCHMATIC®-SMARTSHIELD

HANDS FREE Operating Instructions



Unlock

- Anytime HotFob enters SmartShield Zone
- Press HotFob Unlock button
- Audible Confirmation: Double Chirp

Lock ONLY - Any Door Open

- **Press HotFob Lock button - Doors Lock**
- **NO Audible Confirmation**

Lock and Arm

- Anytime HotFob exits SmartShield Zone **AND** all doors are closed (5-seconds)
- Press HotFob Lock button (All doors closed)
- Audible Confirmation: Single Chirp

No Lock

- Anytime HotFob exits SmartShield Zone **AND** door open
- HotFob exits SmartShield Zone and extra Fob detected in zone
- Audible Confirmation: None

SmartShield OFF (Manual)

- Press AND Hold Lock & Unlock buttons on FOB for 3-seconds
- Audible Confirmation: 10 Chirps

SmartShield ON (Automatic)

- Press AND Hold Lock & Unlock buttons on FOB for 3-seconds
- Audible Confirmation: 10 Chirps

Eddy Field

- HotFob detected in Eddy Field can cause intermittent Lock / Unlock events

Cargo Light - ON

- Any time doors Unlock and door is open
- Press HotFob Cargo Light button

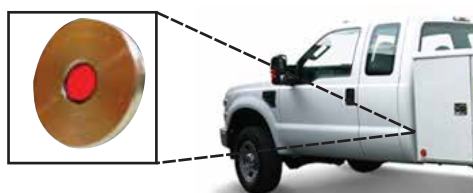
Cargo Light - OFF

- Timer - 10-minutes
- Any time doors Lock
- Press HotFob Cargo Light button

LATCHMATIC®-SMARTSHIELD & LATCHMATIC® Status LED / Alarm -- Audible & Visual Indicators

| Event | Visual Indicator | Audible Indicator |
|---|-------------------------------|------------------------|
| Compartment Doors Locked / Armed | Single Flash Every 5-seconds | Single Chirp |
| Compartment Doors Unlocked / Unarmed | Double Flash One (1) time | Double Chirp |
| Alarm Triggered | Rapid Flashing Until disarmed | Siren Sounds 3-minutes |
| Compartment doors lock, one door open NOT armed | No Flash | No Chirp |

Status LED
Option on some truck body models



LATCHMATIC®

Operating Instructions

Unlock

- Press Unlock button
- Audible Confirmation: Double Chirp

Lock & Arm

- Press Lock button (All doors closed)
- Audible Confirmation: Single Chirp

Lock

- Press Lock button (All doors closed)
- Audible Confirmation: Single Chirp
- *Any door open - No Audible Confirmation

Cargo Light - ON

- Press Unlock button
- Press Cargo Light button

Cargo Light - OFF

- Timer - 10-minutes
- Press Door Lock button
- Press Cargo Light button



Fob



LATCHMATIC®-SMARTSHIELD & LATCHMATIC®

Code Enrollment

Enrolling New Transponder / Transmitter FOB for both LatchMatic SmartShield Base Station and LatchMatic Receiver

To place Base Station or Receiver into LEARN mode (*Recommended*)

- Remove fuse at truck battery and replace
 - Within** 5-seconds, press any button on transponder or transmitter
 - Wait** 5-seconds, press any button on transponder or transmitter
- The corresponding function should operate if FOB was enrolled successfully

OR

To place Base Station or Receiver into LEARN mode

- Open brain box cover
 - Remove and replace 7.5 amp logic fuse
 - Within** 5-seconds, press any button on transponder or transmitter
 - Wait** 5-seconds, press any button on transponder or transmitter
- The corresponding function should operate if FOB was enrolled successfully



Transponder HotFob



Transmitter Fob