

# OWNER'S MANUAL

8+  
#94146



# AQUASPLIT™

CONTROLLER



BATTERIES NOT INCLUDED

VEHICLE



BATTERIES NOT INCLUDED

**Important! Carefully read the Owners Manual before play!**





## PRECAUTION



### **WARNING! CHOKING HAZARD**

Small parts. Not for Children under 3 years.



Only operate the product and its accessories when fully assembled and in accordance with this manual!

- This product and its accessories are not suitable for children under the age of 36 months, because of small parts that can be swallowed.
- Intended for children age 8 and older.
- Adult supervision strongly recommended.
- Drive your vehicle in a safe area away from people, pets, cars, etc.
- Do not drive after dark.
- Do not touch or try to pick up the vehicle when it is in motion. Wait until it has stopped completely.
- Keep hair, fingers, face and loose clothing away from vehicle wheels/rotors/propellers/motors while the vehicle is switched on or while the transmitter is operating.
- Do not drive the vehicle toward walls or other hard objects.
- Be a responsible operator!
- Do not drop or give impact to the product and its accessories.
- Check if a near transmitter produces interference or signals with the same frequency. In such a case, move to another location or try again after a while.
- Never attempt to disassemble or modify the product or its accessories.
- Regularly inspect the antennas for cracks or breaks. Do not bend the transmitter antenna. Do not use the transmitter if the antenna is broken.
- The vehicle wire antenna is fragile. Never pull or tug on the antenna, as it may loosen or detach from the vehicle. Never coil the antenna.
- Use extra caution when playing near water or ice.
- Do not use the product in salt water or water with strong currents.
- Do not drive your vehicle on streets or in a crowded place.
- When the batteries gets wet, dry completely before storing it.
- Do not store the vehicle in a place near a heater or where temperature rises. After use, remove the batteries from the transmitter and vehicle to store.
- This vehicle can run in water but it is not fully water-proof! Immersing it into water may lead to a malfunction.
- Dry vehicle well after operating in water.
- Adult supervision is strongly recommended when playing near water. Do not drive your vehicle in the sea and wavy water surface, or where a rapid current flows. Stay away from areas where waves rise due to a strong wind. Also avoid driving on dirty water surface or where waterweed grows dense, this can cause a malfunction.
- Operate your vehicle in water with due care to the distance and battery life, since you need to get the vehicle back before the battery power runs out.
- Don't play outdoors during thunderstorms.
- The boat shall not be operated in water without battery compartment cover.
- The toy is to be operated in water only when fully assembled in accordance with the instructions.
- If water has entered the body, remove at your earliest convenience.



## BATTERIES



### IMPORTANT BATTERY SAFETY INFORMATION

CAUTION: TO AVOID BATTERY LEAKAGE:



### NOTE: BATTERIES MUST BE RECYCLED OR DISPOSED PROPERLY.

Contact your local area office of solid waste management or other appropriate local agency for information.

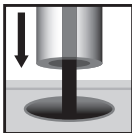
- Make sure the batteries are inserted with correct polarity and follow the toy and battery manufacturer's instructions.
- Use only battery type(s) recommended.
- Do not attempt to short-circuit, charge, disassemble or heat batteries.
- Do not dispose of batteries in fire or make them wet.
- Do not mix or use new and old batteries together.
- Do not mix or use different types of batteries together.
- Non-rechargeable batteries are not to be recharged because of the danger of eruption.
- Remove rechargeable batteries from the product before charging.
- Rechargeable batteries are only to be charged under adult supervision and follow the battery and charger manufacturer's instructions.
- Battery replacement should be done in presence of an adult.
- Remove batteries from the product for storage. Batteries may be hot.
- After use, be sure to turn the switch off.
- Remove weak or exhausted batteries from the product.
- Dispose batteries safely and properly, according to your local requirements.

## ANTENNA ASSEMBLY

①



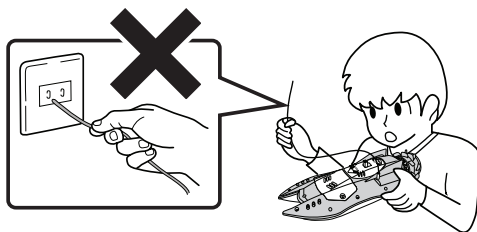
②



③



1. Insert antenna wire from product into tube.
2. Slide tube down antenna wire and into hole in product.
3. Tie knot with any remaining antenna wire (Do not pull wire tight).

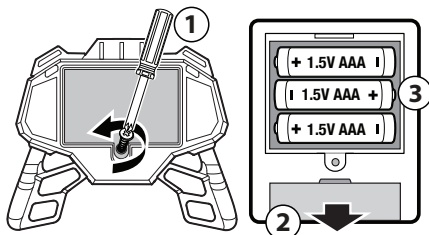


**WARNING!** THE ANTENNA IS NOT TO BE INSERTED INTO SOCKET-OUTLETS!



## BATTERY INSTALLATION

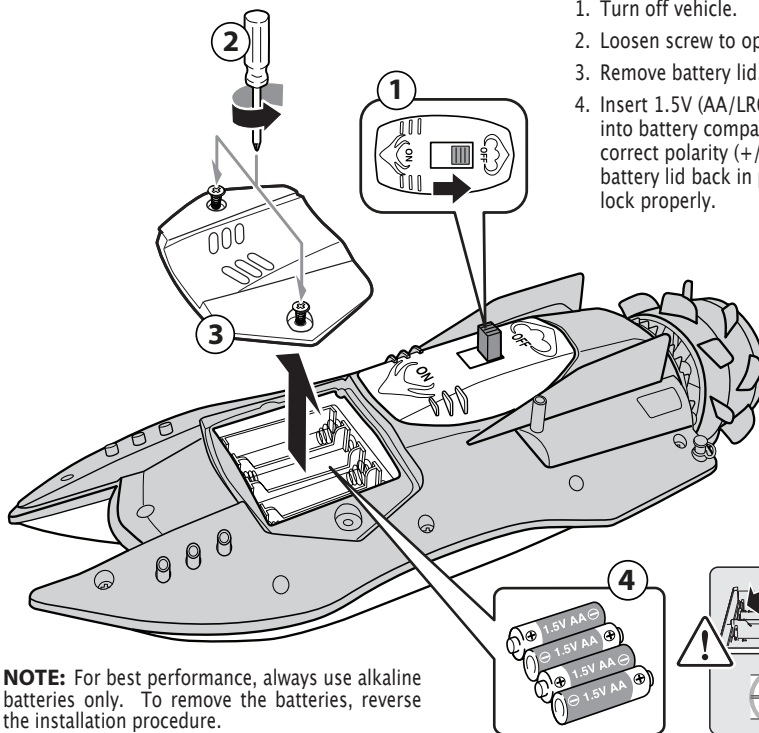
### TRANSMITTER



1. To remove battery lid, loosen screw to open.
2. Slide open the battery lid in the direction as shown in the figure, while lightly pressing its center.
3. Insert 1.5V (AAA/LR03) batteries x3 with the polarity (+/-) as shown on the bottom of battery compartment. Replace the battery lid, following the removal procedure in reverse.

**NOTE:** There is no on/off switch on the Transmitter. Moving the sticks turns it on automatically.

### VEHICLE



1. Turn off vehicle.
2. Loosen screw to open battery lid.
3. Remove battery lid.
4. Insert 1.5V (AA/LR6) batteries x4 into battery compartment with correct polarity (+/-). Place battery lid back in position and lock properly.

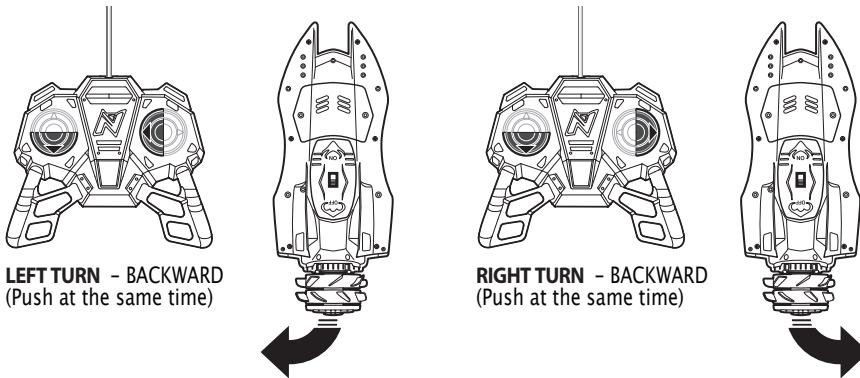
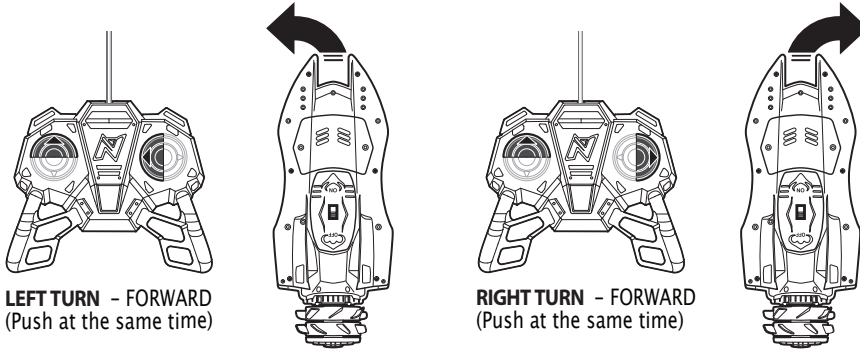
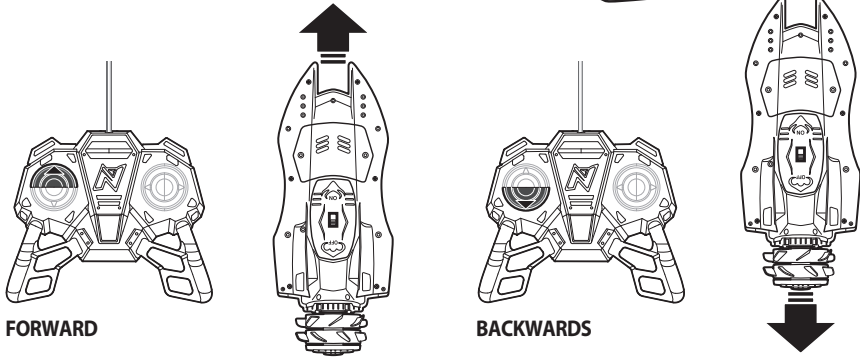
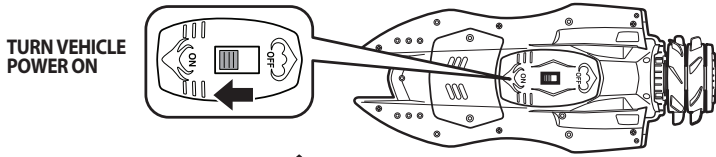
**NOTE:** For best performance, always use alkaline batteries only. To remove the batteries, reverse the installation procedure.



**STRONG BATTERY MEANS OPTIMUM PERFORMANCE**  
Save the battery by turning off vehicle when not in use.

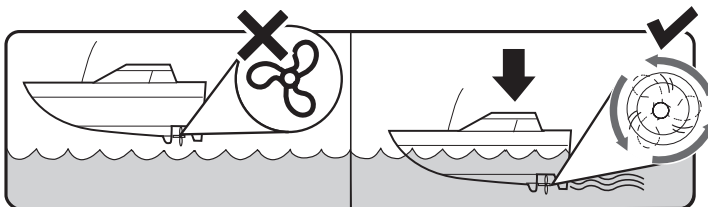


# OPERATING R/C VEHICLE





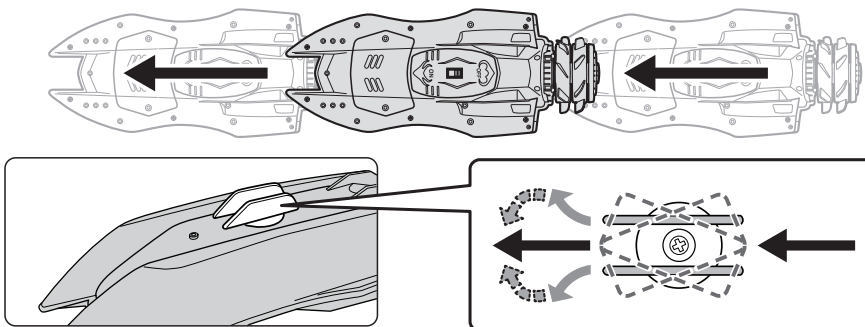
## IMPORTANT SAFETY FEATURE



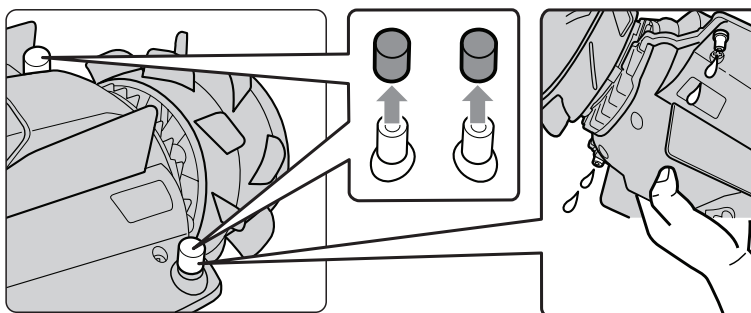
**CAUTION!** This boat is designed so that the propeller will only work once the boat has been placed in water. This is to prevent your hands from getting injured by the turning propeller when holding the boat.

**CAUTION:** Keep out of reach of small children under 36 months old as there is danger of getting hurt. Do not let children touch the screw (propeller) when it is spinning as there is danger of getting hurt.

## VEHICLE ALIGNMENT



## AFTER PLAYING

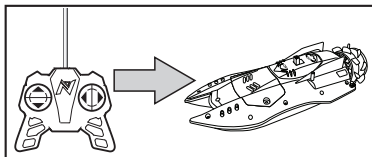


**CAUTION:** After playing, remove all batteries from the boat and the transmitter, drain the water out of the hull, and dry the boat well before storing. If water has entered the body, remove at your earliest convenience.

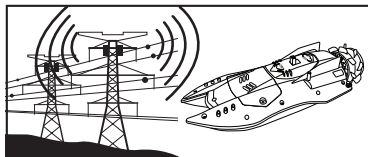
**NOTE:** After playing, always turn vehicle off. Remove batteries from controller and R/C vehicle when not in use or when storing. Moisture will cause damage to radio device and motors. Leakage may occur and cause damage if left for a long period of time. If the control distance becomes noticeably short, or if the vehicle goes out of control, or does not move properly, replace the batteries with new ones.



## TROUBLESHOOTING AND CARE FOR R/C VEHICLE



**LIMITED RADIO CONTROL RANGE**  
While R/C vehicle may be visible at a distance, full operational control may be lost. Hold controller high in the air and direct vehicle back.

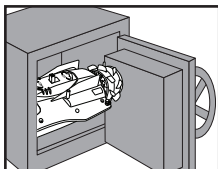


**INTERFERENCE**  
Other radio signals may cause loss of control. Remove vehicle from an area of interference.

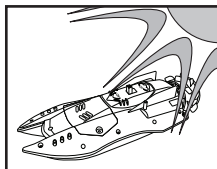
<p><b>R/C VEHICLE DOES NOT MOVE</b></p>	<ul style="list-style-type: none"> <li>• Are the + and - contacts correctly matched in the controller?</li> <li>• Are the metal contact tabs touching, rusty or dirty in controller?</li> <li>• Are there batteries in the vehicle and controller?</li> <li>• Is the power switch turned to play?</li> <li>• Are the batteries weak or out of power?</li> </ul>
<p><b>R/C VEHICLE MOVES BY ITSELF</b></p>	<ul style="list-style-type: none"> <li>• There is radio interference in the area.</li> <li>• Another R/C vehicle with the same frequency is close by.</li> </ul>
<p><b>R/C VEHICLE RUNS SLOWLY</b></p>	<ul style="list-style-type: none"> <li>• There is radio interference in the area.</li> <li>• Another R/C vehicle with the same frequency is close by.</li> <li>• Are the batteries weak or out of power?</li> </ul>
<p><b>PERFORMANCE DROP, INCONSISTENT MOVEMENT OR FAILS TO RUN</b></p>	<p>Check batteries. If necessary, recharge battery pack and/or replace the batteries in the R/C vehicle and controller with new alkaline batteries.</p>

## TREAT YOUR R/C VEHICLE WELL

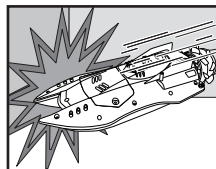
- Radio waves control the R/C vehicle. Care for your vehicle and it will provide hours of fun! Avoid heat, sand and high impact crashes!



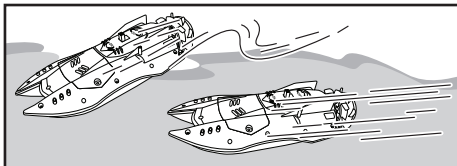
Store in safe place.



No direct sunlight.



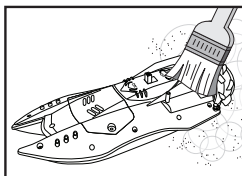
No Collisions.



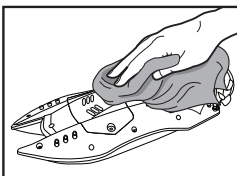
Avoid running 2 vehicles with the same radio control frequencies.



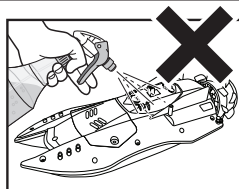
## CLEANING AND MAINTAINING



Brush areas where dirt and dust get trapped.



Wipe body off with a soft rag or tact cloth.



Do not clean vehicle with chemicals or water.

## FEDERAL COMMUNICATIONS COMMISSION COMPLIANCE

### NOTE:

This device complies with Part 15 of the FCC Rules. Operation is subject to the following two conditions:

(1) this device may not cause harmful interference, and

(2) this device must accept any interference received, including interference that may cause undesired operation.

Warning: Changes or modifications to this unit not expressly approved by the party responsible for compliance could void the user's authority to operate the equipment. NOTE: This equipment has been tested and found to comply with the limits for a Class B digital device, pursuant to Part 15 of the FCC Rules. These limits are designed to provide reasonable protection against harmful interference in a residential installation. This equipment generates, uses and can radiate radio frequency energy and, if not installed and used in accordance with the instructions, may cause harmful interference to radio communications. However, there is no guarantee that interference will not occur in a particular installation. If this equipment does cause harmful interference to radio or television reception, which can be determined by turning the equipment off and on, the user is encouraged to try to correct the interference by one or more of the following measures:

- Reorient or relocate the receiving antenna.
- Increase the separation between the equipment and receiver.
- Connect the equipment into an outlet on a circuit different from that to which the receiver is connected.
- Consult the dealer or an experienced radio/TV technician for help.

## MANUFACTURER'S NOTE

"Modifications not authorized by the manufacturer may void users authority to operate the device."

## ATTENTION PARENTS

This toy and all accessories need to be periodically examined for potential hazards and any potentially hazardous parts be repaired or replaced.

[www.toystate.com](http://www.toystate.com)

[www.NikkoRC.com](http://www.NikkoRC.com)

For questions, e-mail our Consumer Service Dept. at [consumerservice@toystate.com](mailto:consumerservice@toystate.com)

Or Call 1-877-473-8015



**WARNING:**  
Not suitable for children under 36 months due to small parts. Choking hazard.



**MADE IN SHENZHEN, CHINA**

**TOY STATE INTERNATIONAL LIMITED**

66 MODY ROAD, KOWLOON, HONG KONG

IN THE INTEREST OF BETTER QUALITY AND VALUE, WE ARE CONSTANTLY IMPROVING AND UPDATING OUR PRODUCTS. CONSEQUENTLY, PICTURES IN THIS INSTRUCTION SHEET MAY SOMETIMES DIFFER FROM THE MODEL ENCLOSED.