



4RUNNER

2 0 1 6



QUICK REFERENCE GUIDE



2016 4Runner

This *Quick Reference Guide* is a summary of basic vehicle operations. It contains brief descriptions of fundamental operations so you can locate and use the vehicle's main equipment quickly and easily.

The *Quick Reference Guide* is not intended as a substitute for the *Owner's Manual* located in the vehicle's glove box. We strongly encourage you to review the *Owner's Manual* and supplementary manuals so you will have a better understanding of the vehicle's capabilities and limitations.

Your dealership and the entire staff of Toyota Motor Sales, U.S.A., Inc. wish you many years of satisfied driving in your new 4Runner.

A word about safe vehicle operations

This *Quick Reference Guide* is not a full description of 4Runner operations. Every 4Runner owner should review the *Owner's Manual* that accompanies this vehicle.

Pay special attention to the boxed information highlighted in color throughout the *Owner's Manual*. Each box contains safe operating instructions to help you avoid injury or equipment malfunction.

All information in this *Quick Reference Guide* is current at the time of printing. Toyota reserves the right to make changes at any time without notice.

INDEX

OVERVIEW

Engine maintenance	8
Fuel tank door and cap	6
Hood release	8
Indicator symbols	4-5
Instrument cluster	4
Instrument panel	2-3
Keyless entry¹	6
Smart Key system¹	7

FEATURES/OPERATIONS

Air Conditioning/Heating	18
Audio	20
Auto lock/unlock^{1,2}	9
Automatic running boards	19
Automatic Transmission	9
Bluetooth® Device Pairing Section	28-37
Clock	14
Cruise control	17
Four-wheel drive	10
Garage door opener (HomeLink®) ³	19
Light control-Instrument panel	15
Lights¹ & turn signals	16
Moon roof¹	14
Parking brake	9
Power outlets-12V DC	22
Power outlets-120V AC	21
Seat adjustments-Front	11
Seat adjustments-Second row seats	11
Seat ventilators/heaters	19
Seats-Folding down second row seats	12
Seats-Head restraints	13
Seats-Returning third row seats	13
Seats-Stowing third row seats	13
Tilt and telescopic steering wheel	10
USB/AUX port	21
VSC OFF button	15
Windows¹	14
Window-Back window¹	15
Windshield wipers & washers	17

SAFETY AND EMERGENCY FEATURES

Door locks	23
Doors-Child safety locks	24
Floor mat installation	27
Seat belts	23
Seat belts-Shoulder belt anchor	23
Spare tire & tools	25
Star Safety System™	26-27
Tire Pressure Monitoring (warning) System	24

¹ Visit your Toyota dealer for information on customizing this feature.

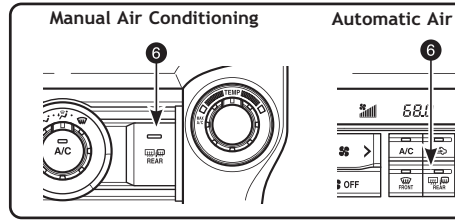
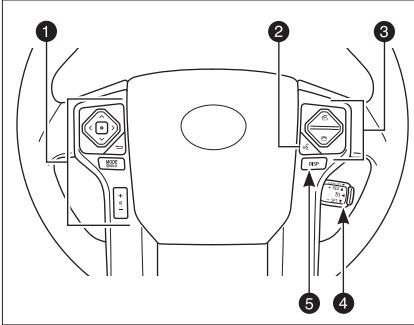
² Programmable by customer. Refer to the Owner's Manual for instructions and more information.

³ HomeLink® is a registered trademark of Gentex Corporation.

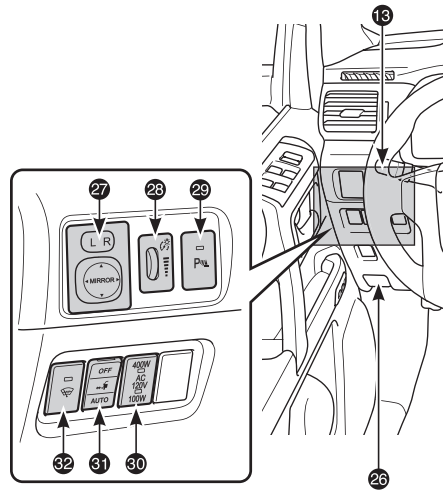
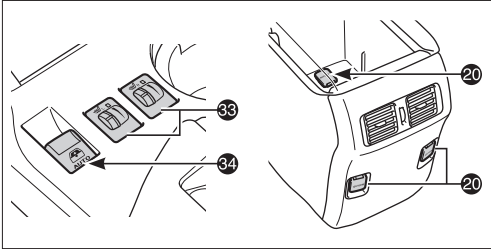
OVERVIEW

Instrument panel

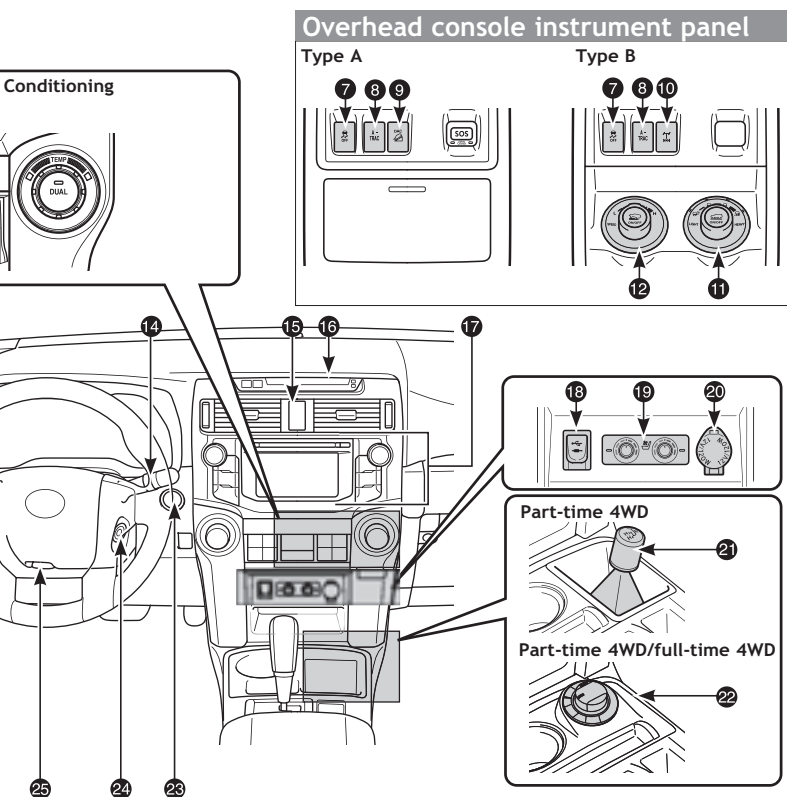
Steering wheel controls



Center console box



- ① Steering wheel audio controls²
- ② Voice command button²
- ③ Telephone switches²
- ④ Cruise control
- ⑤ “DISP” switch
- ⑥ Back window and outside rearview mirror defogger switch
- ⑦ VSC off switch
- ⑧ Active traction control switch¹
- ⑨ Downhill Assist Control system (DAC) switch¹
- ⑩ Rear differential lock switch¹
- ⑪ Multi-terrain Select switch¹
- ⑫ Crawl Control switch¹
- ⑬ Headlight, turn signal and front fog light controls
- ⑭ Wiper and washer controls
- ⑮ Emergency flasher switch
- ⑯ Accessory meter¹/Outside temperature display
- ⑰ Audio system²/navigation system²
- ⑱ AUX/USB port²
- ⑳ Seat heater¹/ventilator switches¹

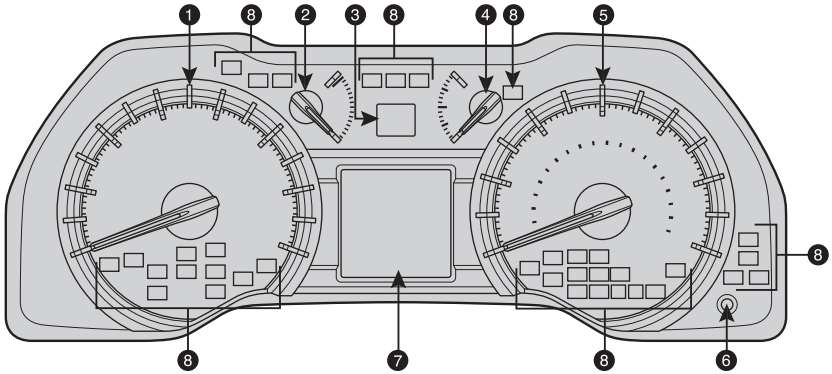


- 20 Power outlet¹
- 21 Front-wheel drive control lever¹
- 22 Front-wheel drive control switch¹/Four-wheel drive control switch¹
- 23 “ENGINE START STOP” button (Smart Key)¹
- 24 Ignition switch (standard key)¹
- 25 Tilt and telescopic steering lock release
- 26 Hood release
- 27 Power outside rearview mirror controls
- 28 Instrument panel light control
- 29 Intuitive parking assist switch and indicator¹
- 30 Power outlet main switch¹
- 31 Automatic running boards switch¹
- 32 Windshield wiper de-icer switch¹
- 33 Seat heater switch¹
- 34 Power back window switch

¹ If equipped

² For details, refer to the “Navigation System Owner’s Manual.”

Instrument cluster



- ① Tachometer
- ② Engine coolant temperature gauge
- ③ Shift position and shift range
- ④ Fuel gauge
- ⑤ Speedometer
- ⑥ Odometer/trip meter display change button
- ⑦ Multi-information display
- ⑧ Service indicator and reminder

Indicator symbols

	Brake system warning ¹
	Seat belt reminder (alarm will sound if speed is over 12 mph)
	Charging system warning ¹
	AIR BAG ON/OFF indicator
	Low engine oil pressure warning ¹
	Malfunction/Check Engine indicator ¹
	Master warning ¹
	Low fuel level warning
	Open door warning
	Airbag SRS warning ^{1,2}
	Arrow direction indicates fuel tank door position

¹ If indicator does not turn off within a few seconds of starting engine, there may be a malfunction. Have vehicle inspected by your Toyota dealer.

² For details, see "SRS airbags" Section 1-1, 2016 Owner's Manual.

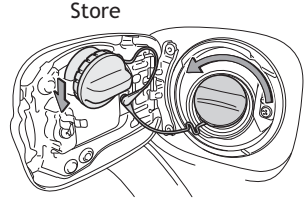
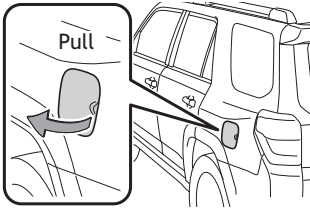
	Low Tire Pressure Warning ¹
	Headlight low/high beam indicator
	Turn signal indicator
	Front fog light indicator
	Power steering system warning ¹
	Multi-terrain select indicator ⁵
	Engine immobilizer/Theft deterrent system indicator
	Smart Key system warning ⁵
A/T P	Unengaged Park warning light ⁵
	Crawl Control indicator ^{1,5}
4LO	Low speed four-wheel drive indicator ^{3,5}
	Center differential lock indicator ^{3,5}
	Vehicle Stability Control OFF indicator ¹
	Four-wheel drive indicator ^{3,5}
	Slip indicator ¹
AUTO LSD	AUTO Limited Slip Differential indicator ^{1,5}
	Downhill Assist Control indicator ^{1,5}
KDSS	Kinetic Dynamic Suspension System indicator ^{1,5}
	Cruise control/Cruise control SET indicator ⁴
ABS	Anti-lock Brake System warning ¹
A-TRAC	Active traction control indicator ⁵
	Rear differential lock indicator ⁵
TRAC OFF	Traction Control OFF indicator ¹
ECO	Eco Driving Indicator Light ¹
	Automatic running boards indicator ^{1,5}


³ If this light flashes, refer to "Four-wheel drive system," Section 4-5, 2016 Owner's Manual.

⁴ If this light flashes, refer to "Cruise control," Section 4-5, 2016 Owner's Manual.

⁵ If equipped.

Fuel tank door and cap



NOTE: Tighten until one click is heard. If the cap is not properly sealed, Check Engine “” indicator may illuminate.

Keyless entry

Locking

Without Smart Key system



With Smart Key system



Unlocking

Without Smart Key system



With Smart Key system



Push ONCE: Driver door
TWICE: All doors



NOTE: If a door is not opened within 60 seconds of unlocking, all doors will relock for safety.

Panic button

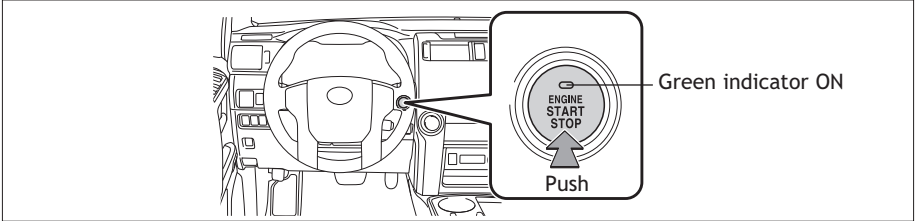


Push and hold



Smart Key system (if equipped)

Start function



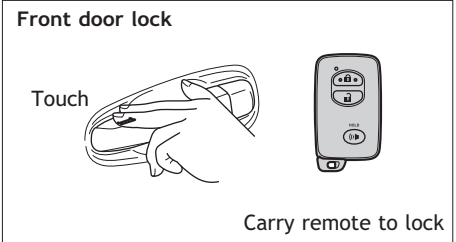
NOTE: Carry the electronic key to enable start function. Gear shift lever must be in Park and brake pedal depressed.

Power (without starting engine)

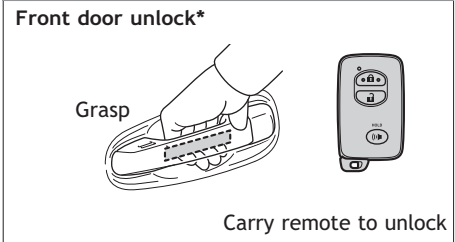
Without depressing the brake pedal, pressing the “ENGINE START STOP” switch will change the operation mode in succession from:

- ACCESSORY** Accessories such as the radio will operate.
- ON** Power ON; the engine is not running.
- OFF** All systems OFF.

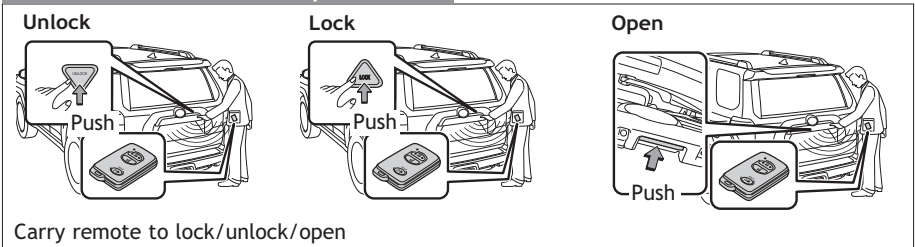
Locking operation



Unlocking operation



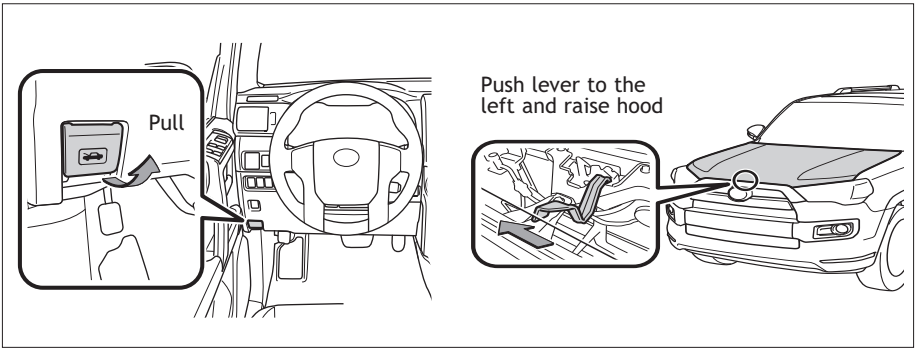
Back door lock/unlock/open



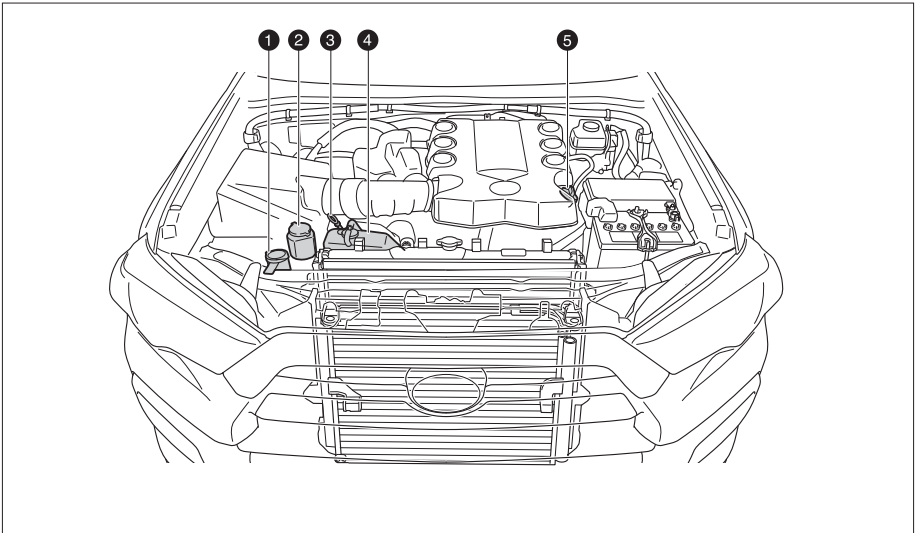
* Driver door unlocking function can be programmed to unlock driver door only, or all doors. Grasping front passenger door handle will unlock all doors.

NOTE: Doors may also be locked/unlocked using remote.

Hood release



Engine maintenance



- ① Windshield and back window washer fluid tank
- ② Power steering fluid reservoir
- ③ Engine oil level dipstick
- ④ Engine coolant reservoir
- ⑤ Engine oil filler cap

NOTE: *Regularly scheduled maintenance, including oil changes, will help extend the life of your vehicle and maintain performance. Please refer to the “Warranty & Maintenance Guide.”*

FEATURES/OPERATIONS

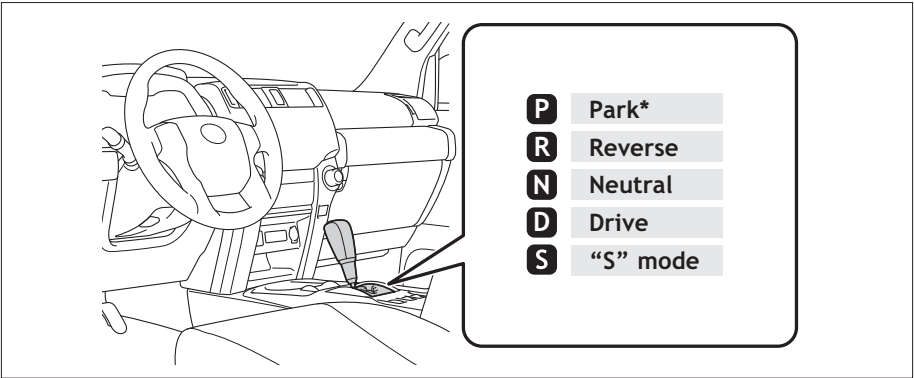
Auto lock/unlock

Automatic door locks can be programmed to operate in four different modes, or turned OFF.

- Doors lock when shifting from Park.
- Doors lock when the vehicle speed is approximately 12 mph or higher.
- Doors unlock when shifting into Park.
- Doors unlock when the driver's door is opened within 10 seconds after turning the "ENGINE START STOP" switch OFF.

Refer to the *Owner's Manual* for more details.

Automatic Transmission



* The ignition/"ENGINE START STOP" switch must be "ON" and the brake pedal depressed to shift from Park.

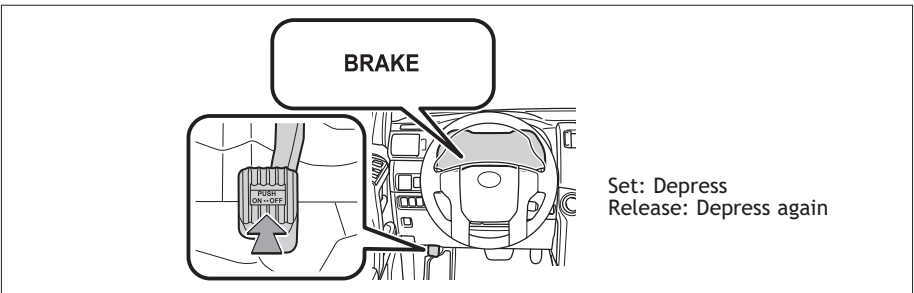
"S" (Sequential) mode

Shift the shift lever to "S" position from "D" position.

- +: Upshift (push and release)
- : Downshift (pull and release)

Downshifting increases power going uphill, or provides engine braking downhill. For best fuel economy during normal driving conditions, always drive with the shift lever in the "D" position.

Parking brake



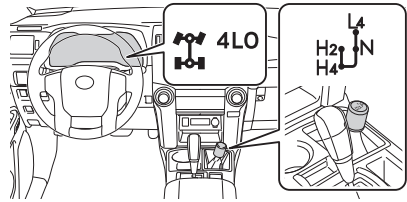
Four-wheel drive (if equipped)

Part-time four-wheel drive models

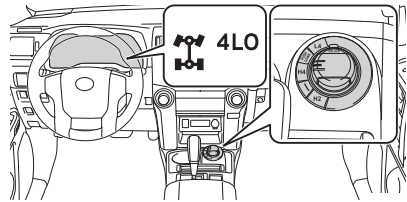
Push “UNLOCK” button and then push and turn the selector.

- H2** High speed (2WD)
- H4** High speed (4WD)
Shift to “H4” with speed below 50 mph.
- N** Neutral
- L4** Low speed (4WD)
Stop vehicle, shift to “N” position, then move the lever to “L4.”

Type A



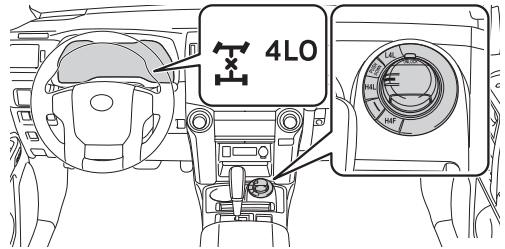
Type B



Full-time four-wheel drive models

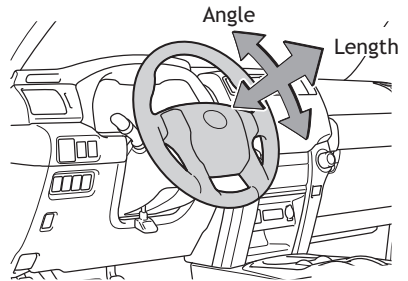
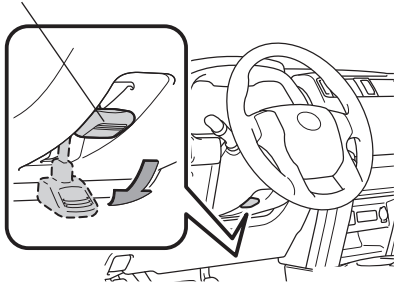
Push “UNLOCK” button and then push and turn the selector.

- H4F** High speed
- H4L** High speed (center differential locked)
- L4L** Low speed (center differential locked)
Stop vehicle, shift to “N” position, then push and turn to “L4L.”



Tilt and telescopic steering wheel

Lock release lever

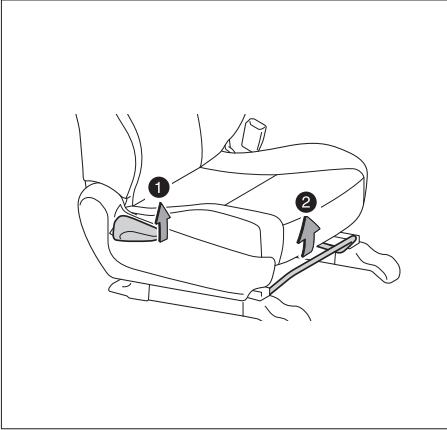


Hold wheel, push lever down, set angle and length, and return lever.

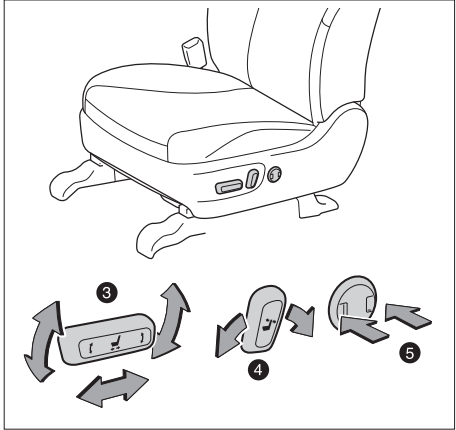
NOTE: Do not attempt to adjust while the vehicle is in motion.

Seat adjustments-Front

Manual seat



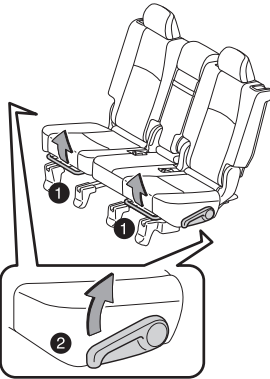
Power seat



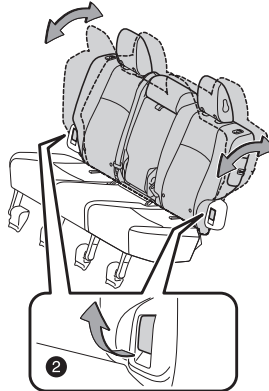
- ❶ Seatback angle
- ❷ Seat position (forward/backward)
- ❸ Driver seat: seat position, cushion angle and height
Passenger seat: seat position (forward/backward)
- ❹ Seatback angle
- ❺ Lumbar support (driver side only)

Seat adjustments-Second row seats

Vehicles with third row seats



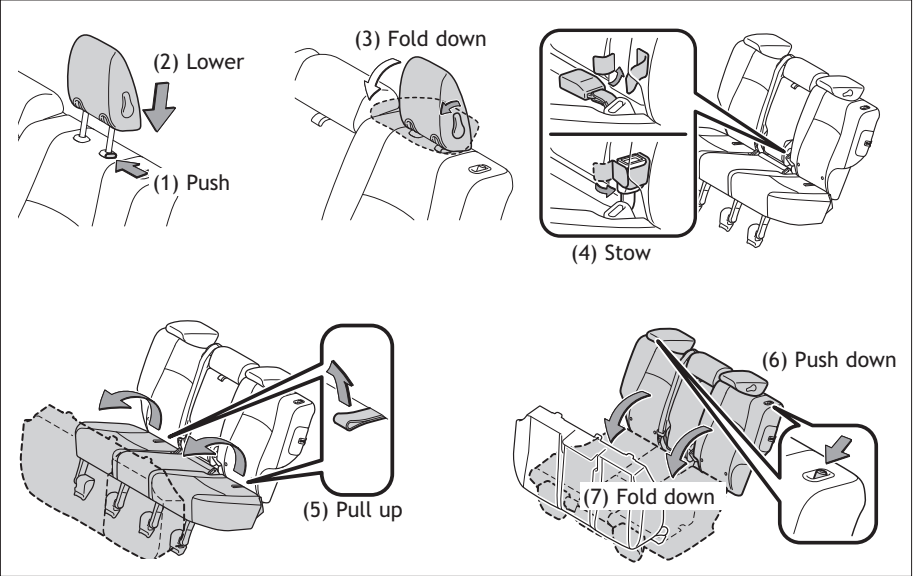
Vehicles without third row seats



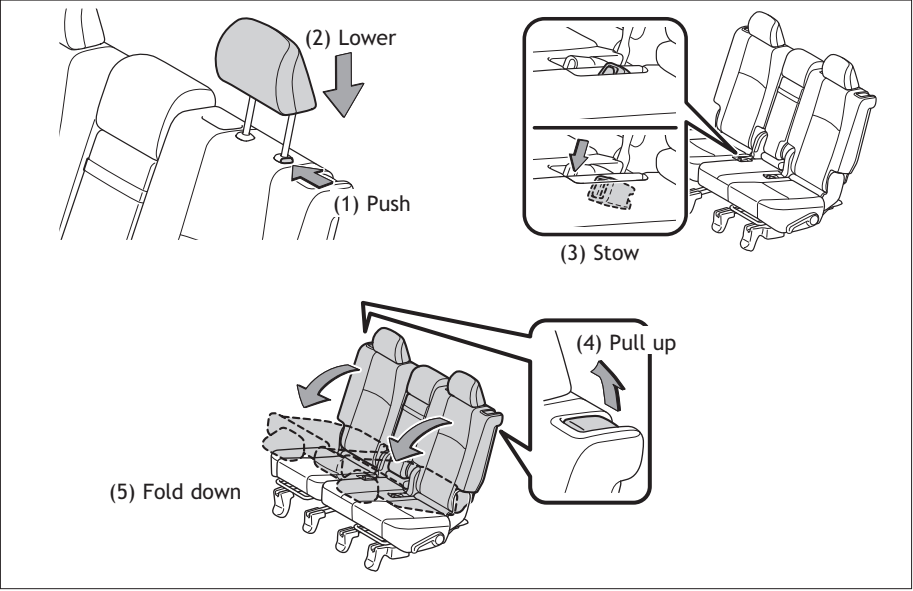
- ❶ Seat position (forward/backward)
- ❷ Seatback angle

Seats-Folding down second row seats

Without third row seats

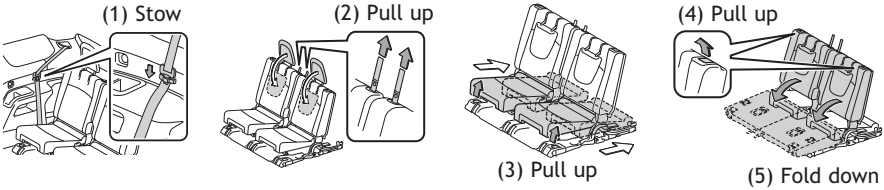


With third row seats

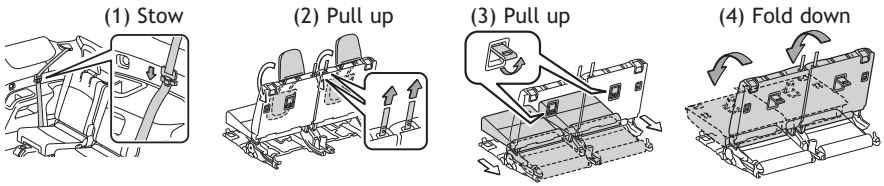


Seats-Stowing third row seats (if equipped)

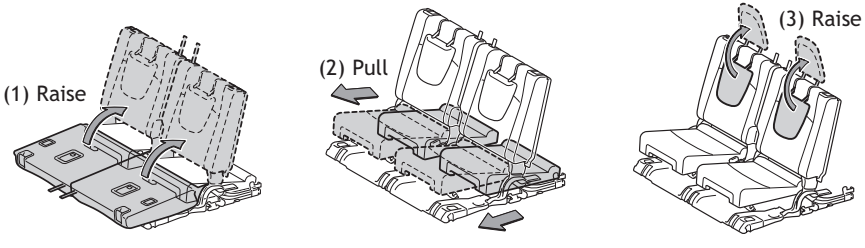
From inside



From outside

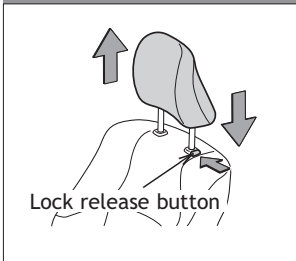


Seats-Returning third row seats (if equipped)

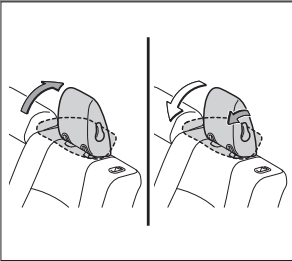


Seats-Head restraints

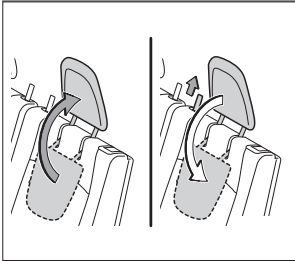
Front and second row



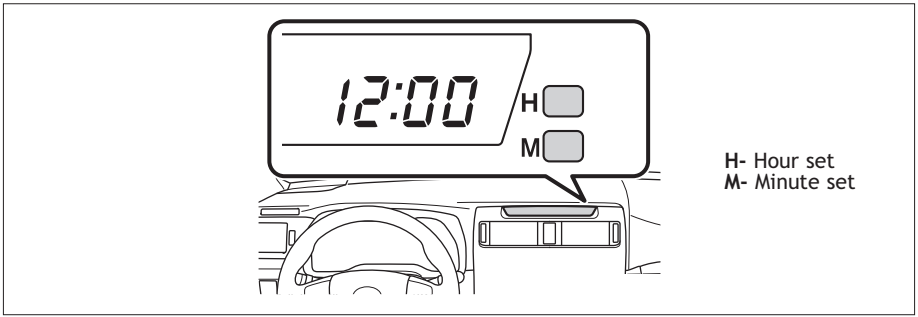
Second row (vehicles without third row seats)



Third row (if equipped)

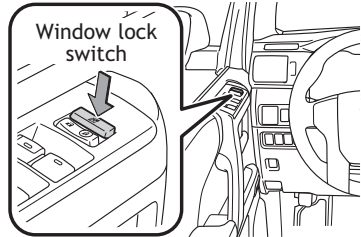
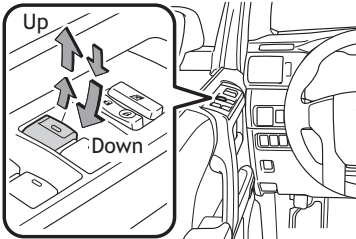


Clock



Windows

Driver side



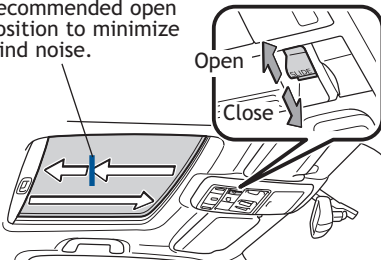
Automatic operation Push the switch completely down or pull it completely up and release to fully open or close. To stop the window partway, operate the switch in the opposite direction.

Window lock switch Deactivates all passenger windows. Driver's window remains operable.

Moon roof (if equipped)

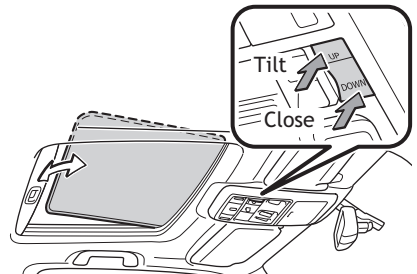
Sliding operation

Recommended open position to minimize wind noise.



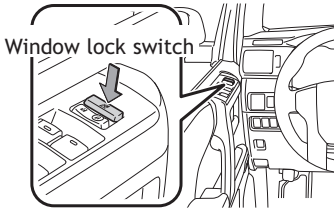
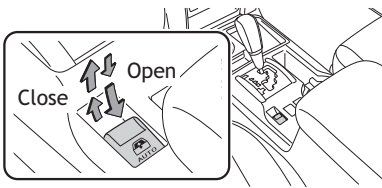
Push once to open partway; again to open completely.
Push once to close completely. To stop partway, press switch lightly.

Tilting operation



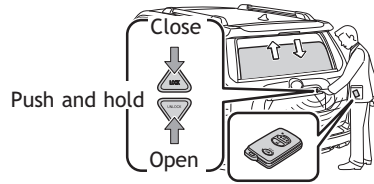
Window-Back window

Operating from inside

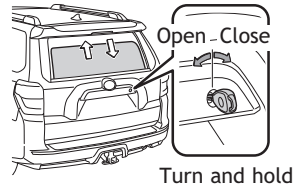


Operating from outside

With Smart Key system

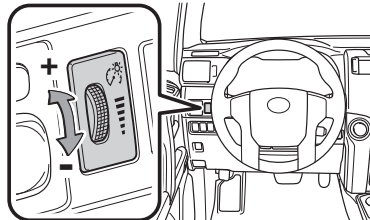


Without Smart Key system

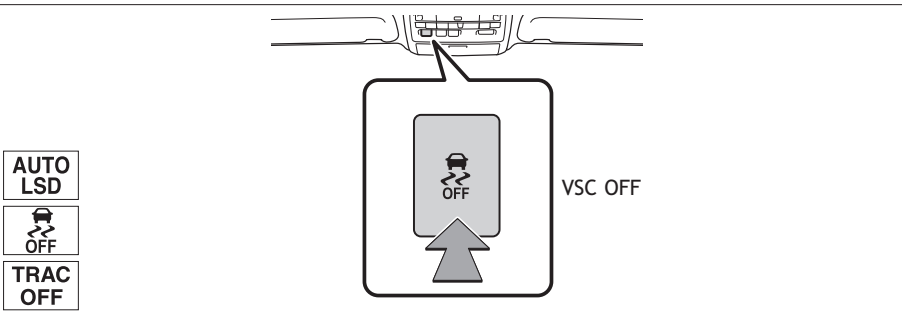


Light control-Instrument panel

Brightness control



VSC OFF button

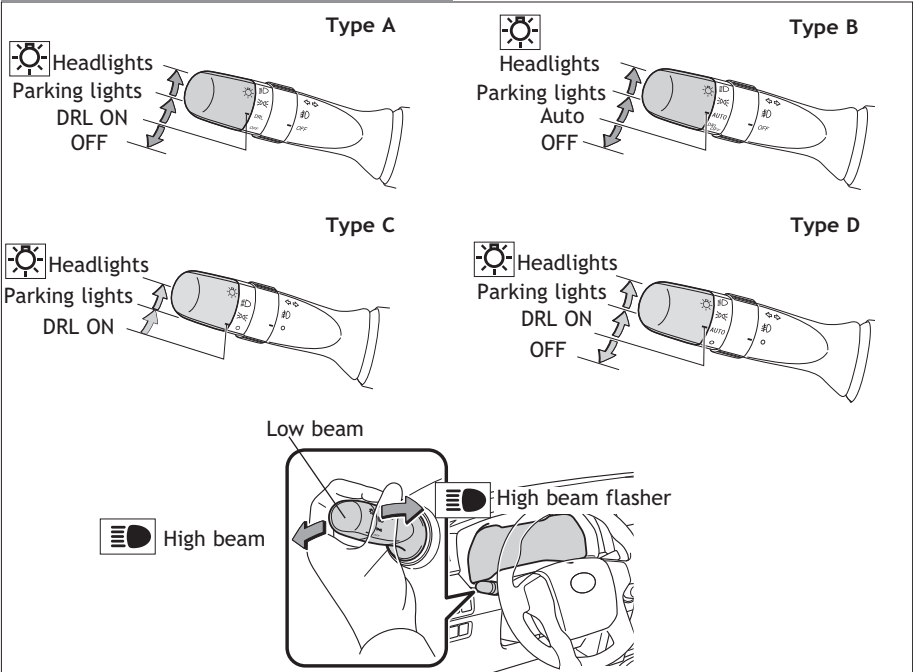


The VSC OFF button is used to switch between modes related to the TRAC, VSC and Auto LSD (2WD) functions.

Refer to Section 4-5 of the *Owner's Manual* for more information.

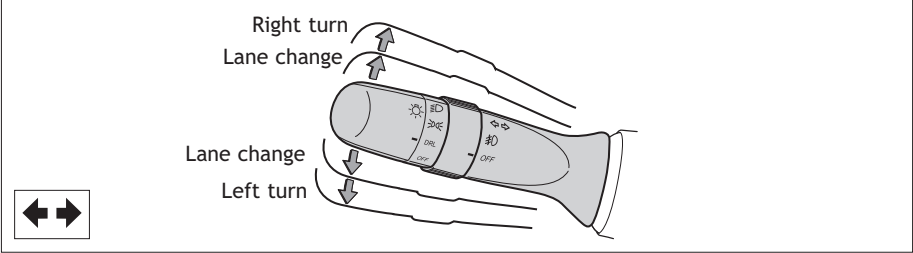
Lights & turn signals

Headlights

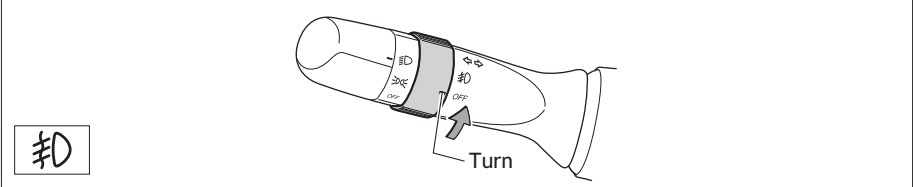


Automatic light cut off system Will automatically turn lights off after a delay of 30 seconds, or the lock switch on remote may be pushed after locking.

Turn signals



Front fog lights

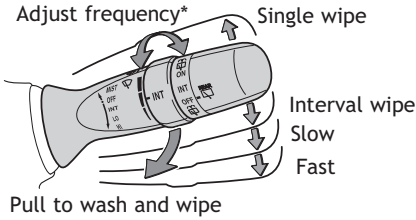


Front fog lights come on only when the headlights are on low beam.

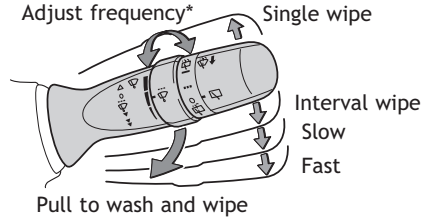
Windshield wipers & washers

Front

Type A



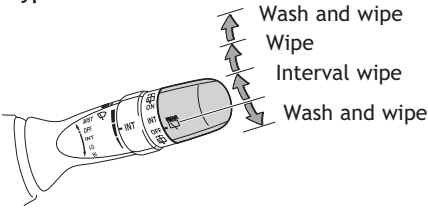
Type B



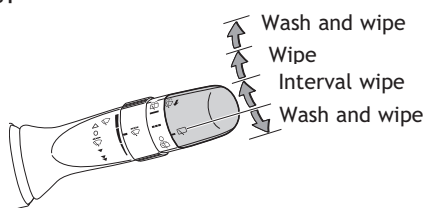
* Intermittent windshield wiper frequency adjustment
Rotate to increase/decrease wipe frequency.

Rear

Type A



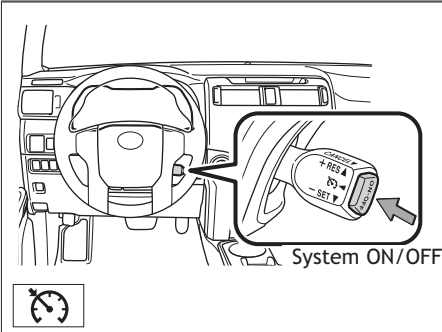
Type B



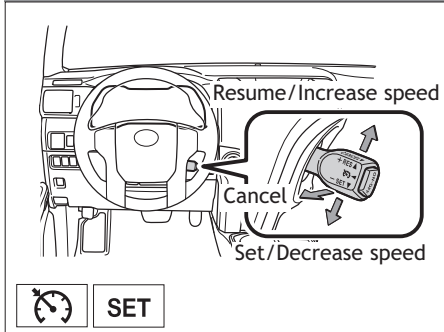
NOTE: Rear wiper and washer operate only when back window is fully closed.

Cruise control

Turning system ON/OFF



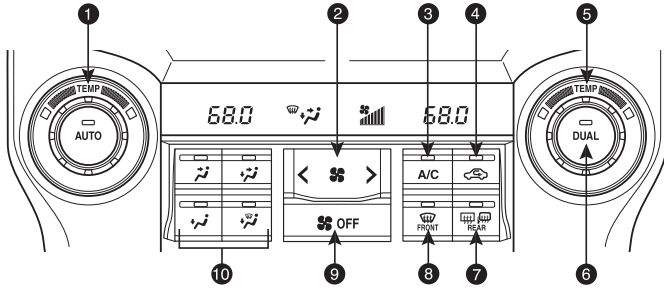
Functions



Refer to the *Owner's Manual* for more details.

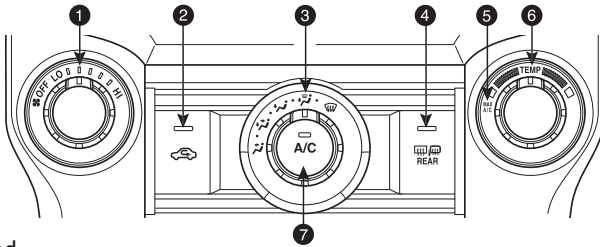
Air Conditioning/Heating

Automatic Air Conditioning



- ❶ Temperature selector (driver side)
- ❷ Fan speed
- ❸ Air Conditioning ON/OFF
- ❹ Recirculate cabin air (fresh air when OFF)
- ❺ Temperature selector (front passenger side)
- ❻ “DUAL” button
Indicator ON: Separate temperature settings for driver and passenger.
Indicator OFF: Synchronize temperature settings for driver and passenger.
- ❼ Rear window and outside rearview mirror defoggers
- ❽ Airflow vent
 In “” mode, use outside air (“” indicator OFF) to reduce window fogging. “” mode uses outside air only.
- ❾ Climate control OFF
- ❿ Automatic climate control ON
 Adjust the temperature setting, and airflow vents and fan will adjust automatically.

Manual Air Conditioning

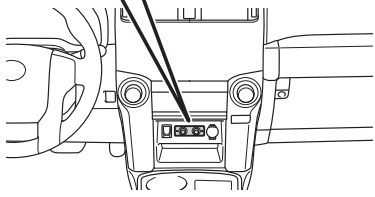
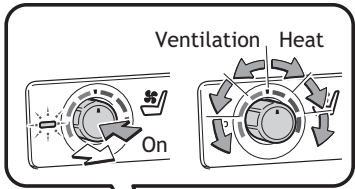


- ❶ Fan speed
- ❷ Recirculate cabin air (outside air when OFF)
- ❸ Airflow vent
 In “” mode, use outside air (“” indicator OFF) to reduce window fogging. “” mode uses outside air only.
- ❹ Rear window and outside rearview mirror defoggers
- ❺ For maximum cooling. Air intake will automatically be set to recirculate.
- ❻ Temperature selector
- ❼ Air Conditioning ON/OFF

Seat ventilators/heaters (if equipped)

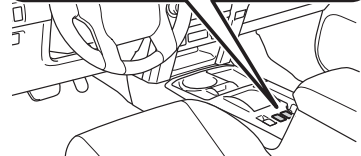
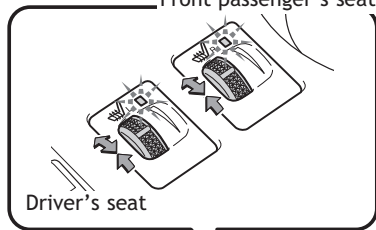
Front seats

With ventilators

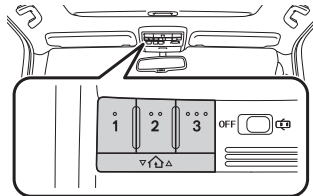


Heater only

Front passenger's seat



Garage door opener (HomeLink®)* (if equipped)



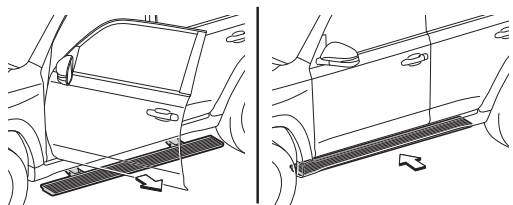
Garage door openers manufactured under license from HomeLink®* can be programmed to operate garage doors, estate gates, security lighting, etc.

Refer to the *Owner's Manual* for more details.

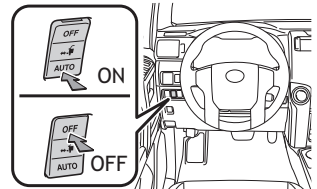
For programming assistance, contact HomeLink® at 1-800-355-3515, or visit <http://www.homelink.com>.

* HomeLink® is a registered trademark of Johnson Controls, Inc.

Automatic running boards (if equipped)



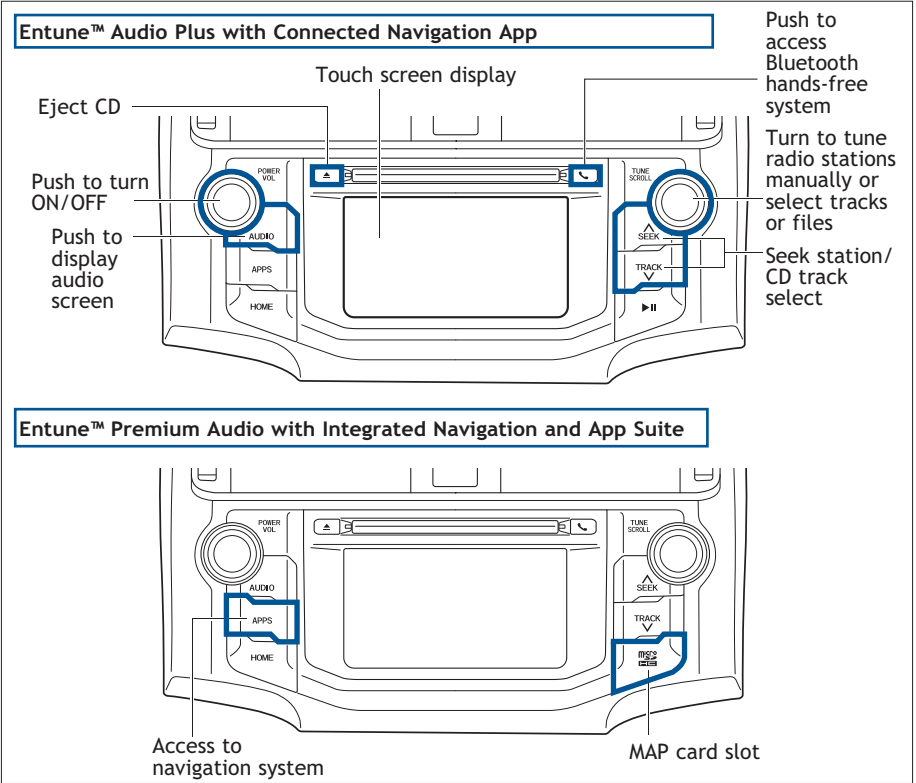
ON/OFF switch



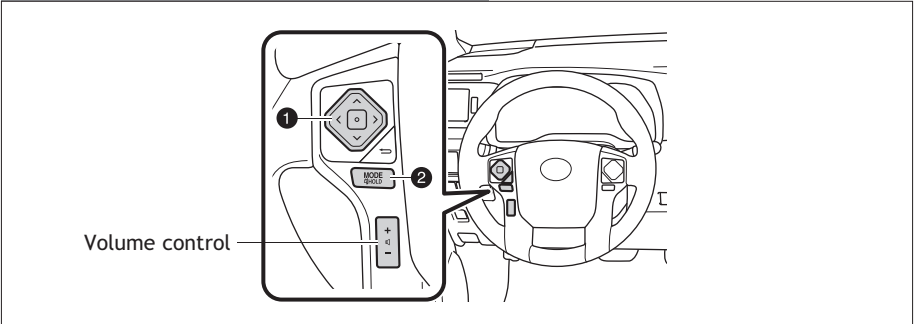
The automatic running boards are linked to side door operation. When a side door is opened or closed, the board on the same side extends or retracts.

Audio (if equipped)

Refer to the “Navigation System Owner’s Manual” and “2016 Entune™ Audio Quick Reference Guide” for instructions and more information.



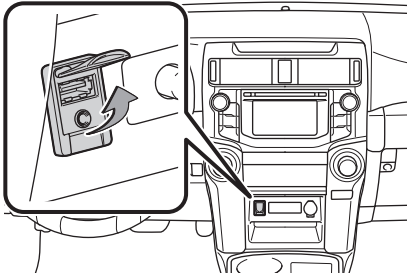
Steering wheel controls (if equipped)



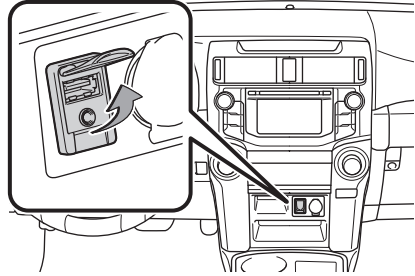
- ① “ ^ v ”
Use to search within the selected audio medium (radio, CD, etc.).
- ② “MODE”
Push to turn audio ON and select an audio mode. Push and hold to turn audio system OFF.

USB/AUX port

Type A



Type B

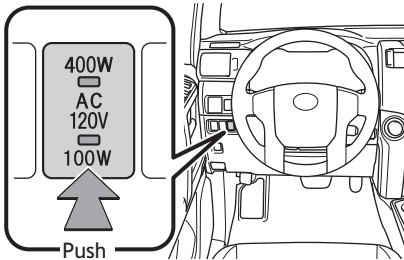


By inserting a mini plug into the USB/AUX port, you can listen to music from a portable audio device through the vehicle's speaker system while in USB/AUX mode.

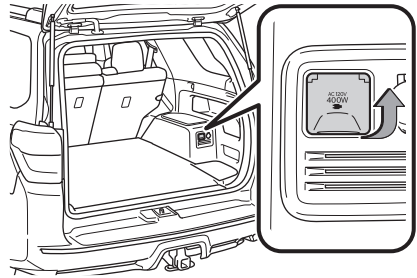
Refer to the “*Navigation System Owner's Manual*” for instructions and more information.

Power outlets-120V AC (if equipped)

ON/OFF
Main switch



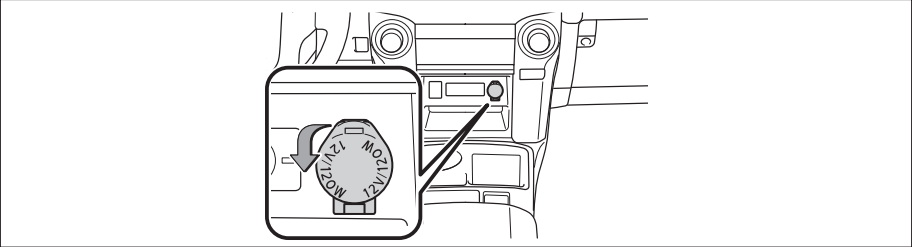
Luggage compartment



NOTE: The 120V AC power outlet can only be used when engine is running.

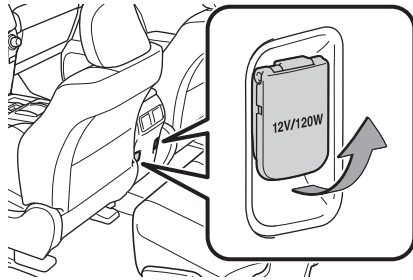
Power outlets-12V DC

Center panel

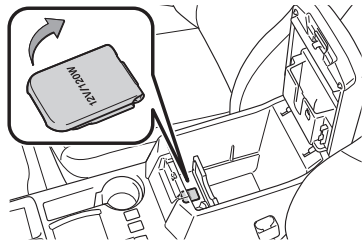
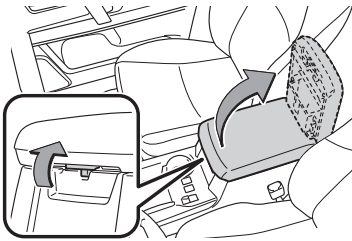


Console box

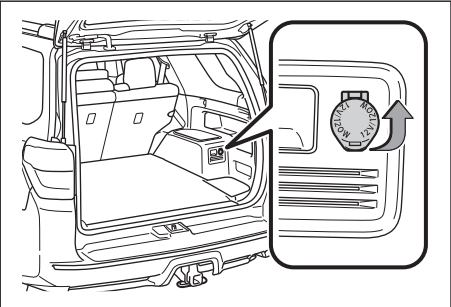
Outside



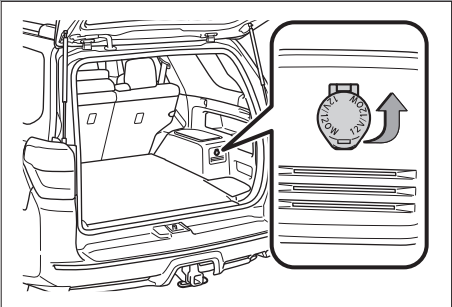
Inside



Luggage compartment (with the 120V AC outlet)



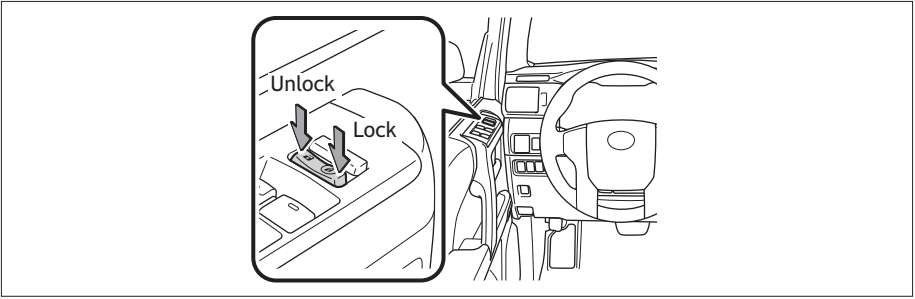
Luggage compartment (without the 120V AC outlet)



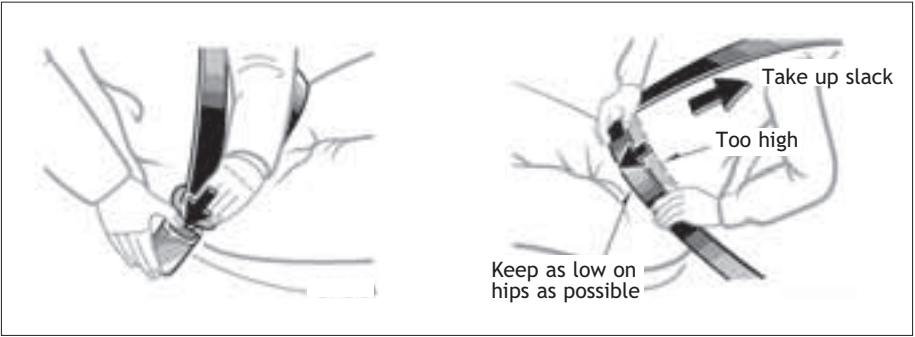
NOTE: Designed for car accessories. Ignition switch/“ENGINE START STOP” switch must be in the “ACC” or “ON” position to be used.

SAFETY AND EMERGENCY FEATURES

Door locks



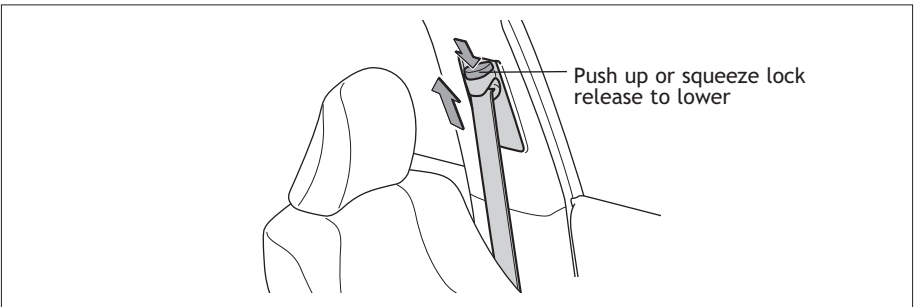
Seat belts



NOTE: If a passenger's seat belt is fully extended, then retracted even slightly, the Automatic locking retractor (ALR) will prevent it from being re-extended beyond that point, unless fully retracted again. This feature is used to help hold child restraint systems securely.

To find more information about seat belts, and how to install a child restraint system, refer to the *Owner's Manual*.

Seat belts-Shoulder belt anchor



Tire Pressure Monitoring (warning) System

If tire pressure becomes critically low on any of the tires, “(!)” indicator light will come on. Correctly adjusting tire inflation will turn off the light after a few minutes. If the light does not turn off, have the system checked by your Toyota dealer.

Refer to the *Owner’s Manual* for more details.

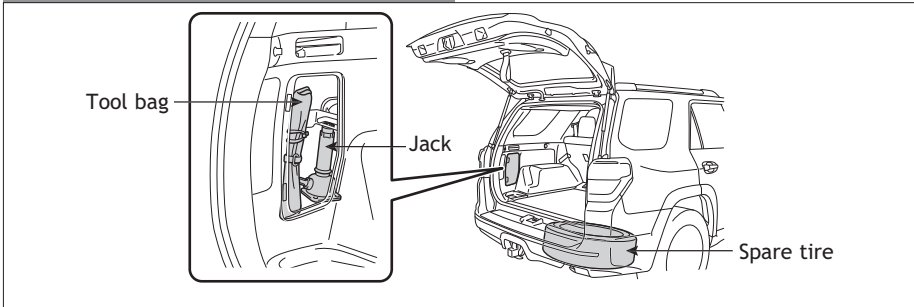
Doors-Child safety locks



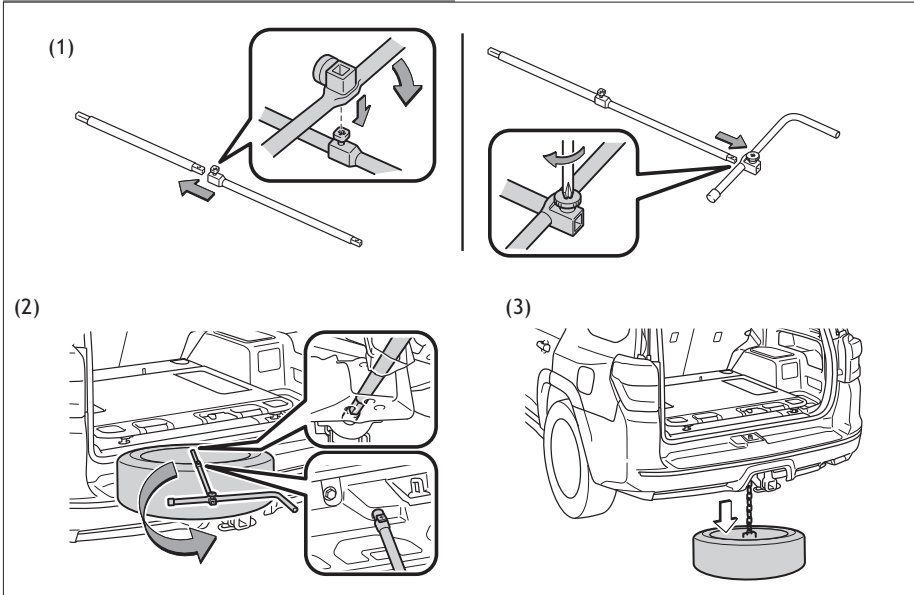
Moving the lever downward will allow the door to be opened only from the outside.

Spare tire & tools

Tool location



Removing the spare tire



- (1) Assemble the jack handle.
- (2) Insert the jack handle end through the opening in the bumper, and into the lowering screw.
- (3) Turn the jack handle counterclockwise.

Refer to the *Owner's Manual* for tire changing and jack positioning procedures.

SAFETY AND EMERGENCY FEATURES

Star Safety System™

All new Toyota vehicles come standard with the Star Safety System™, which combines Vehicle Stability Control (VSC), Traction Control (TRAC), Anti-lock Braking System (ABS), Electronic Brake-force Distribution (EBD), Brake Assist (BA) and Smart Stop Technology (SST).

Vehicle Stability Control (VSC)

VSC helps prevent loss of traction during cornering by reducing engine power and applying brake force to selected wheels.

Toyota's VSC monitors steering angle and the direction your vehicle is traveling. When it senses that the front or rear wheels begin to lose traction, VSC reduces engine power and applies braking to selected wheels. This helps restore traction and vehicle control.

Traction Control (TRAC)

VSC helps prevent loss of traction during cornering by reducing engine power, and Traction Control helps maintain traction on loose gravel and wet, icy, or uneven surfaces by applying brake force to the spinning wheel(s).

Toyota's TRAC sensors are activated when one of the drive wheels starts to slip. TRAC limits engine output and applies the brakes to the spinning wheel. This transfers power to the wheels that still have traction to help keep you on track.

Anti-Lock Brake System (ABS)

ABS helps prevent brakes from locking up by "pulsing" brake pressure to each wheel. This limits brake lockup and helps provide directional control for the current road conditions.

Toyota's ABS sensors detect which wheels are locking up and limits wheel lockup by "pulsing" each wheel's brakes independently. Pulsing releases brake pressure repeatedly for fractions of a second. This helps the tires attain the traction that current road conditions will allow, helping you to stay in directional control.

Electronic Brake Force Distribution (EBD)

Toyota's ABS technology has Electronic Brake-force Distribution (EBD) to help maintain control and balance when braking. Abrupt stops can cause a vehicle to tilt forward, reducing the braking power of the rear wheels. EBD responds to sudden stops by redistributing brake force to enhance the braking effectiveness of all four wheels.

Brake Assist (BA)

Brake Assist is designed to detect sudden or "panic" braking, and then add braking pressure to help decrease the vehicle's stopping distance. When there's only a split second to react, Brake Assist can add additional brake pressure more quickly than just the driver alone can.

Smart Stop Technology (SST)

Smart Stop Technology automatically reduces engine power when the accelerator and brake pedals are pressed simultaneously under certain conditions.

SST engages when the accelerator is depressed first and the brakes are applied firmly for longer than one-half second at speeds greater than five miles per hour.

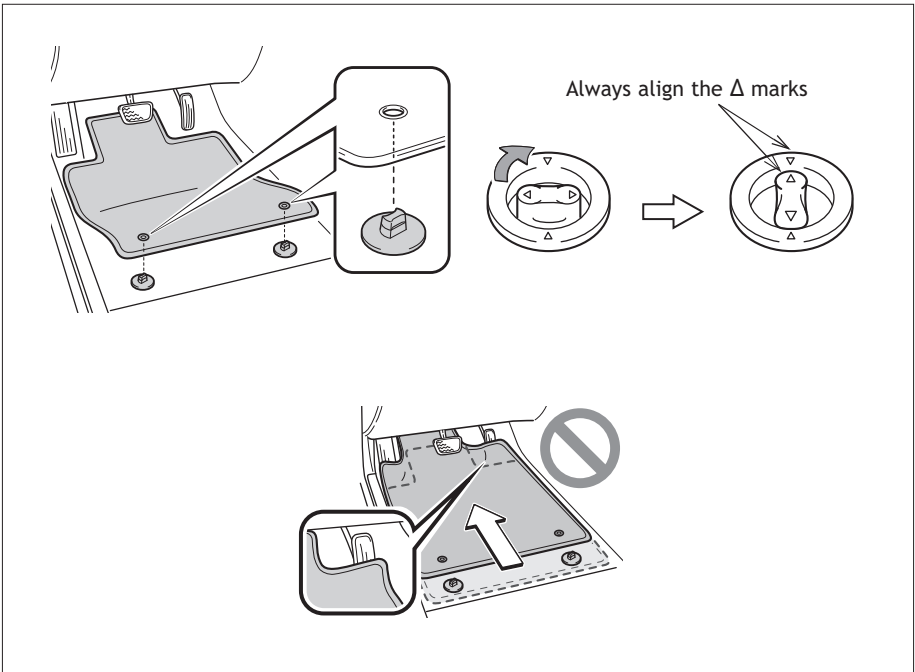
SST doesn't engage if the brake pedal is depressed before the accelerator pedal, allowing vehicles to start on a steep hill and safely accelerate without rolling backward.

Floor mat installation

There are two types of Toyota floor mats: carpeted and all-weather. Each vehicle has model-specific floor mats. Installation is easy.

To keep your floor mat properly positioned, follow these steps:

- Only use floor mats designed for your specific model.
- Use only one floor mat at a time, using the retaining hooks to keep the mat in place.
- Install floor mats right side up.



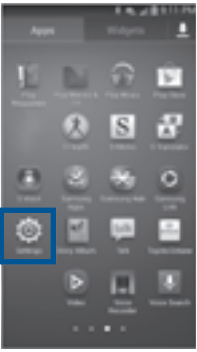
BLUETOOTH® DEVICE PAIRING SECTION

To begin the Bluetooth® Pairing process, press the HOME button on the faceplate of your Toyota Vehicle Entune™ Multimedia Head Unit.¹

Bluetooth® Pairing for Android® phone and Entune™ touch screen system

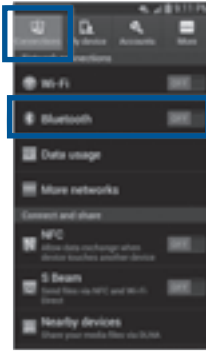
Pairing your phone is the first step in connecting with your Toyota for hands-free calling and for audio streaming via Bluetooth. This pairing process is quick and easy: all Android mobile digital devices have Bluetooth integrated; all you have to do is setup the phone and multimedia system to “talk” to each other and form a connection.²

Initiate Bluetooth® on your Android®



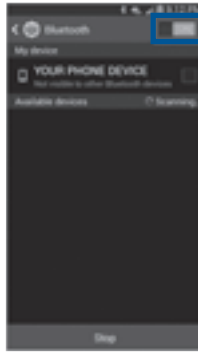
STEP 1

From your APPS SCREEN, select SETTINGS



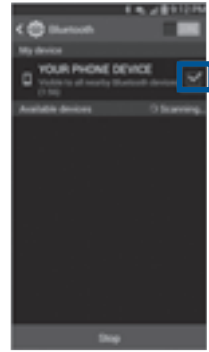
STEP 2

Select CONNECTIONS and select BLUETOOTH



STEP 3

Ensure BLUETOOTH is ON



STEP 4

Select YOUR PHONE DEVICE to make it discoverable.

Phone will seek out Bluetooth devices while remaining discoverable.



STEP 5

While your Android device is seeking out Bluetooth devices, proceed to your Entune Multimedia Head Unit on your Toyota vehicle.

¹ To determine which head unit is installed in your vehicle, refer to Audio section in this guide.

² Some Android devices may have slightly different SETTINGS screen layout depending on manufacturer of device and Android OS version.

BLUETOOTH® DEVICE PAIRING

Initiate Bluetooth® on your Entune™ Multimedia Head Unit

Once you have Bluetooth enabled on your phone and ready to pair, you will need to initiate Bluetooth on your Entune head unit. Please follow the instructions below to pair your Bluetooth enabled phone to your Entune system.



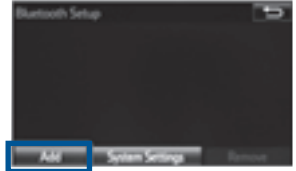
STEP 6

On your Toyota Vehicle Entune Multimedia Head Unit, Select **SETUP BUTTON** on the Home Screen.



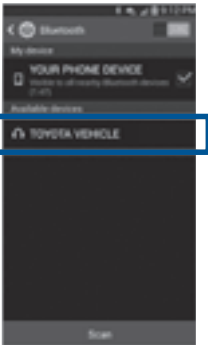
STEP 7

Select **BLUETOOTH**



STEP 8

Select **ADD**, to add your phone device



STEP 9

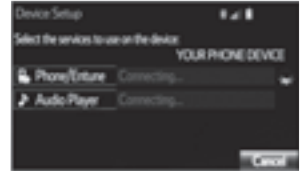
Back on your smartphone, you can now select your **TOYOTA VEHICLE** in Bluetooth Settings.

You may need to enter the provided Bluetooth PIN on your phone.



STEP 10

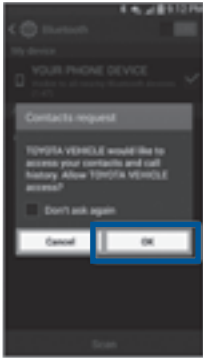
Your smartphone is now paired with Entune.



STEP 11

Once paired, Entune will attempt to connect audio and contacts on your phone.

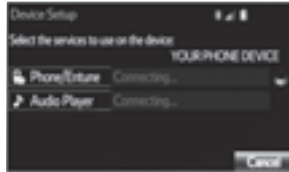
Initiate Bluetooth® on your Entune™ Multimedia Head Unit



STEP 12

Using your smartphone, you will need to allow Entune access to your messaging and contacts

It is recommended to check the "Don't ask again" box, so as not to have to press OK every time the phone makes a Bluetooth connection with your Toyota



STEP 13

A confirmation will appear once your phone has been paired and connected.

Additional Resources

If you're having trouble pairing your phone, Toyota has you covered. You can get more information from the following sources:

Online Pairing Guide:
www.toyota.com/connect

Your Toyota Owner's Manual
Located in the vehicle glovebox

Toyota Customer
Experience Center
(800) 331-4331

Disclosures

This brochure is accurate at the time of print; content subject to change based on periodic multimedia software updates.

1. Concentrating on the road should always be your first priority while driving. Do not use the hands-free phone system if it will distract you.
2. The Bluetooth word mark and logos are registered trademarks owned by Bluetooth SIG, Inc. and any use of such marks by Toyota is under license. A compatible Bluetooth enabled phone must first be paired. Phone performance depends on software, coverage & carrier.
3. Android is a trademark of Google Inc.
4. Apps/services vary by phone/carrier; functionality depends on many factors. Select apps use large amounts of data; you are responsible for charges. Apps & services subject to change. See Toyota.com/entune for details.

BLUETOOTH® DEVICE PAIRING

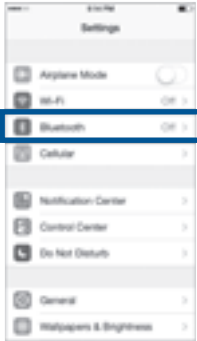
Bluetooth® Pairing for iPhone® and Entune™ touch screen system

Pairing your phone is the first step in connecting with your Toyota for hands-free calling and for audio streaming via Bluetooth. This pairing process is quick and easy: all iPhone mobile digital devices have Bluetooth integrated; all you have to do is setup the phone and multimedia system to “talk” to each other and form a connection.

Initiate Bluetooth® on your iPhone®



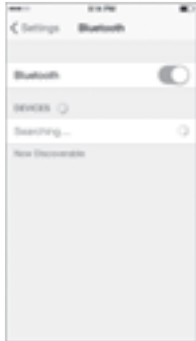
STEP 1
From the HOME SCREEN, select SETTINGS



STEP 2
Select BLUETOOTH



STEP 3
Ensure BLUETOOTH is ON



STEP 4
Your iPhone will seek out Bluetooth devices while remaining discoverable



STEP 5
While your iPhone device is seeking out Bluetooth devices, proceed to your Entune Multimedia Head Unit on your Toyota vehicle.

Initiate Bluetooth® on your Entune™ Multimedia Head Unit

Once you have Bluetooth enabled on your phone and ready to pair, you will need to initiate Bluetooth on your Entune head unit. Please follow the instructions below to pair your Bluetooth enabled phone to your Entune system.



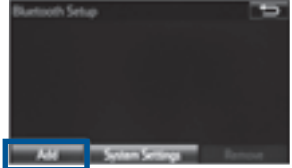
STEP 6

Select **SETUP** BUTTON on the Home Screen.



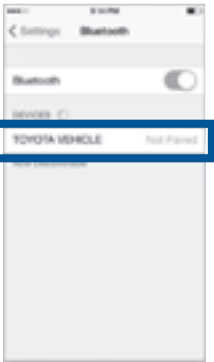
STEP 7

Select **BLUETOOTH**



STEP 8

Select **ADD**, to add your phone device



STEP 9

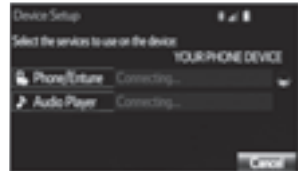
Back on your smartphone, you can now select your **TOYOTA VEHICLE** in Bluetooth Settings.

You may need to enter the provided Bluetooth PIN on your phone.



STEP 10

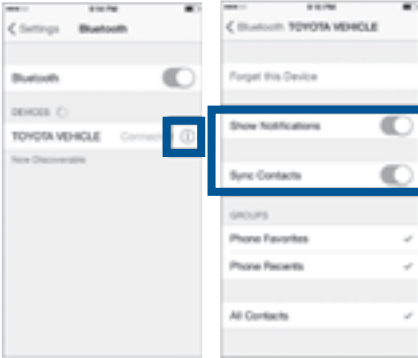
Your smartphone is now paired with Entune.



STEP 11

Once paired, Entune will attempt to connect audio and contacts on your phone.

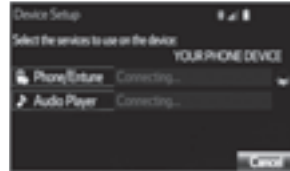
BLUETOOTH® DEVICE PAIRING



STEP 12

Using your smartphone, you may need to allow Entune access to your messaging and contacts

Only current iPhone text messages can be viewed on the head unit. iPhone does not allow text message reply.



STEP 13

A confirmation will appear once your phone has been paired and connected.

Additional Resources

If you're having trouble pairing your phone, Toyota has you covered. You can get more information from the following sources:

Online Pairing Guide:
www.toyota.com/connect

Your Toyota Owner's Manual
Located in the vehicle glovebox

Toyota Customer
Experience Center
(800) 331-4331

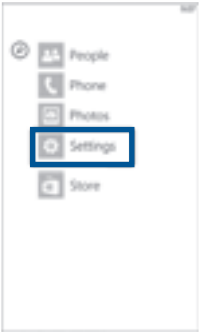
Disclosures

- This brochure is accurate at the time of print; content subject to change based on periodic multimedia software updates.
1. Concentrating on the road should always be your first priority while driving. Do not use the hands-free phone system if it will distract you.
 2. The Bluetooth word mark and logos are registered trademarks owned by Bluetooth SIG, Inc. and any use of such marks by Toyota is under license. A compatible Bluetooth enabled phone must first be paired. Phone performance depends on software, coverage & carrier.
 3. Apps/services vary by phone/carrier; functionality depends on many factors. Select apps use large amounts of data; you are responsible for charges. Apps & services subject to change. See Toyota.com/entune for details.

Bluetooth® Pairing for Windows Phone® and Entune™ touch screen system

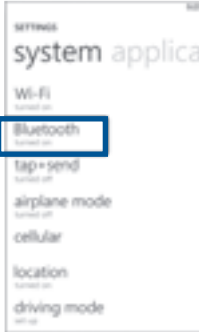
Pairing your phone is the first step in connecting with your Toyota for hands-free calling and for audio streaming via Bluetooth. This pairing process is quick and easy: all Windows Phone mobile digital devices have Bluetooth integrated; all you have to do is setup the phone and multimedia system to “talk” to each other and form a connection.

Initiate Bluetooth® on your Windows Phone®



STEP 1

From your APP LIST, select **SETTINGS**



STEP 2

Select **BLUETOOTH**



STEP 3

Ensure **BLUETOOTH** is ON



STEP 4

Phone will seek out Bluetooth devices while remaining discoverable



STEP 5

While your iPhone device is seeking out Bluetooth devices, proceed to your Entune Multimedia Head Unit on your Toyota vehicle.

BLUETOOTH® DEVICE PAIRING

Initiate Bluetooth® on your Entune™ Multimedia Head Unit

Once you have Bluetooth® enabled on your phone and ready to pair, you will need to initiate Bluetooth® on your Entune head unit. Please follow the instructions below to pair your Bluetooth enabled phone to your Entune system.



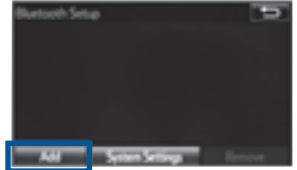
STEP 6

On your Toyota Vehicle Entune Multimedia Head Unit, Select **SETUP BUTTON** on the Home Screen.



STEP 7

Select **BLUETOOTH**



STEP 8

Select **ADD**, to add your phone device



STEP 9

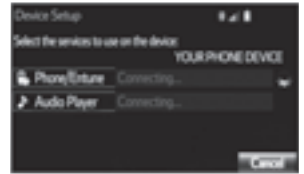
Back on your smartphone, you can now select your **TOYOTA VEHICLE** in Bluetooth Settings.

You may need to enter the provided Bluetooth PIN on your phone.



STEP 10

Your smartphone is now paired with Entune.



STEP 11

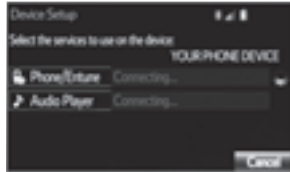
Once paired, Entune will attempt to connect audio and contacts on your phone.

Initiate Bluetooth® on your Entune™ Multimedia Head Unit



STEP 12

Using your smartphone, you may need to allow Entune access to your contacts



STEP 13

A confirmation will appear that your phone has been paired and connected.

Additional Resources

If you're having trouble pairing your phone, Toyota has you covered. You can get more information from the following sources:

Online Pairing Guide:
www.toyota.com/connect

Your Toyota va
Located in the vehicle glovebox

Toyota Customer
Experience Center
(800) 331-4331

Disclosures

- This brochure is accurate at the time of print; content subject to change based on periodic multimedia software updates.
1. Concentrating on the road should always be your first priority while driving. Do not use the hands-free phone system if it will distract you.
 2. The Bluetooth word mark and logos are registered trademarks owned by Bluetooth SIG, Inc. and any use of such marks by Toyota is under license. A compatible Bluetooth enabled phone must first be paired. Phone performance depends on software, coverage & carrier.
 3. Apps/services vary by phone/carrier; functionality depends on many factors. Select apps use large amounts of data; you are responsible for charges. Apps & services subject to change. See Toyota.com/entune for details.

NOTES

NOTES

NOTES

NOTES



CUSTOMER EXPERIENCE CENTER
1-800-331-4331

