

Quick Installation Guide





Wireless N Access Point

EAP115

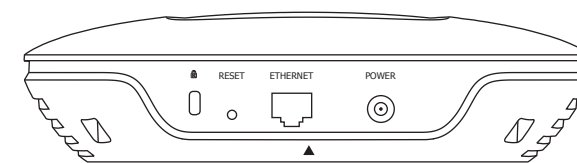
7106506355 REV1.0.0

LED Indication



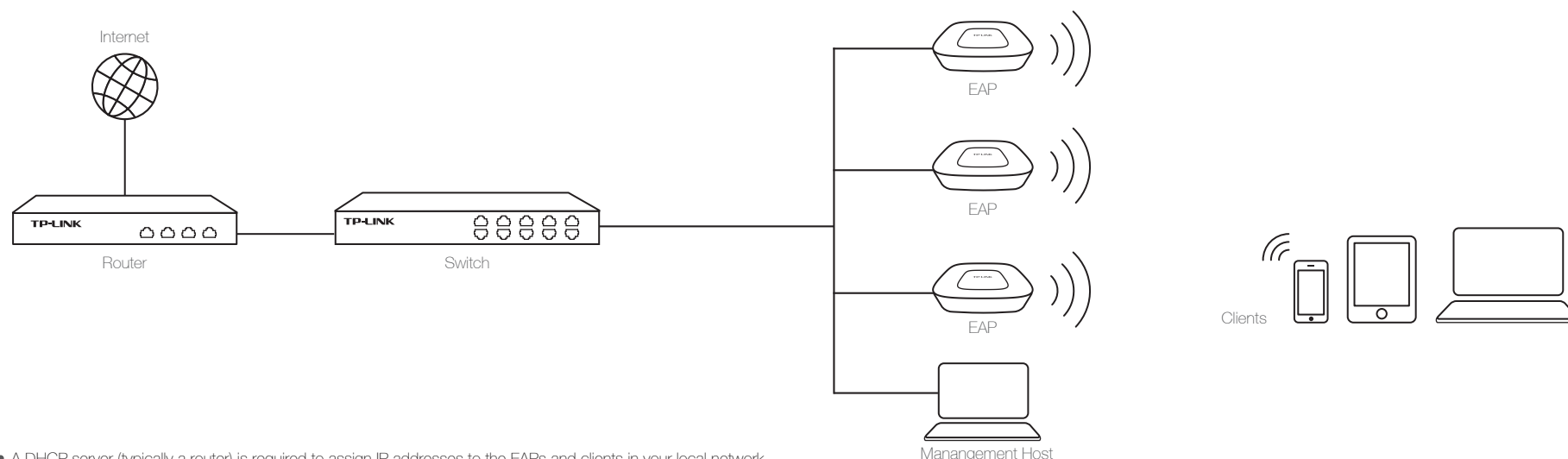
- | | |
|---|--|
| <p> Solid green
The device is working properly.</p> <p> Flashing red
System errors. RAM, Flash, Ethernet, WLAN or firmware may be malfunctioning.</p> | <p> Flashing yellow
Firmware update is in progress. Do not disconnect or power off the device.</p> <p> Double-flashing red, green, yellow
The device is being reset to its factory default settings.</p> |
|---|--|

Interface Panel



- RESET**
With the device powered on, press and hold the button for about 8 seconds until the LED flashes red, then release the button. The device will restore to factory default settings.
- ETHERNET**
The port is used to connect to a router or a switch to transmit data or to a PSE (Power Sourcing Equipment), such as a PoE switch, for both data transmission and Power over Ethernet (PoE) through Ethernet cabling.

1 Typical Network Topology

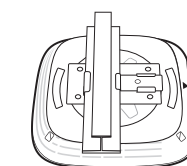


- A DHCP server (typically a router) is required to assign IP addresses to the EAPs and clients in your local network.
- The management host can be in the same or different network segment with the EAPs.

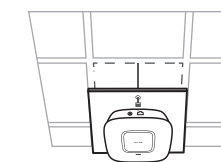
2 Hardware Installation

The EAP can be ceiling rail mounted, ceiling-mounted, or wall-mounted. The instructions for various mounting options are on the back of this Quick Installation Guide.

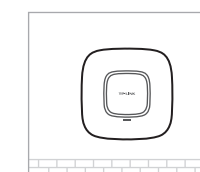
Option 1: Ceiling Rail Mounting



Option 2: Ceiling Mounting



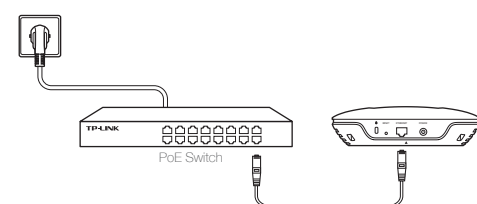
Option 3: Wall Mounting



3 Power Supply

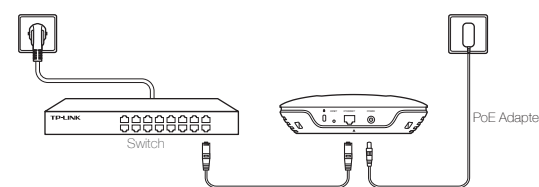
The EAP can be powered via a PSE device (such as a PoE switch) or a power adapter.

Via PoE Switch



Connect an Ethernet cable from the PoE switch to the ETHERNET port.

Via Power Adapter



Plug one end of the provided power adapter into the POWER port of the EAP and the other end to a standard electrical wall outlet.

4 Software Configuration

To quickly set up a wireless network connection with mass EAPs, you can manage the EAPs via EAP Controller or in Cluster mode.

Via EAP Controller

Note: The IP address of the management host must be reachable for the EAPs in the network. In this example, the management host is in the same LAN with the EAPs.

Step 1: Installing the EAP Controller

On the management host, download the EAP Controller installation file from the product support page at www.tp-link.com. Run the file and follow the wizard to install the EAP Controller.

Step 2: Configuring the EAP Controller

Launch the EAP Controller and follow the configuration wizard to create a primary wireless network. After the wizard is finished, a login screen will appear. Enter the Admin name and password you created and click **Sign In**.

Step 3: Adopting the EAP devices

Adopt the EAP devices in the Controller management interface to change their status from pending to connected.

For More Configurations

Now you can manage your wireless network and view network statistic using the EAP Controller. Please refer to the EAP Controller User Guide to learn more information about configuring and using the Controller software.

Via Cluster Mode

Note: 1. The EAPs forming a cluster must be of the same model and in the same LAN.
2. EAPs with the same cluster name will form a cluster.
3. The management host must be in the same LAN with the EAPs.

Step 1: Logging in to the EAP

On the management host, open a browser and type the IP address (assigned by the DHCP server) of the EAP in the address field, and press the **Enter** key. Fill in admin (all lowercase) for both username and password to login.

Step 2: Choosing the Work Mode

Choose the work mode as Cluster in the drop-down box, the EAP will reboot and switch to Cluster mode. The EAPs with the same cluster name will form a cluster and one of them will be elected as the Master EAP automatically.

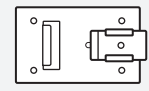
Step 3: Managing the EAPs

On the management host, log in to any EAP's IP address and you will be redirected to the Master EAP's web management page, where you can manage each EAP in the cluster.

For More Configurations

Now you can manage your wireless network and view network statistic in cluster mode. Please refer to the EAP User Guide to learn more information about Cluster mode.

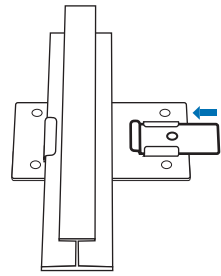
Option 1: Ceiling Rail Mounting



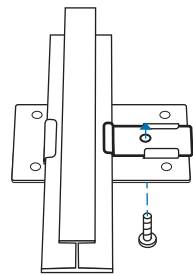
Ceiling T-rail Clip



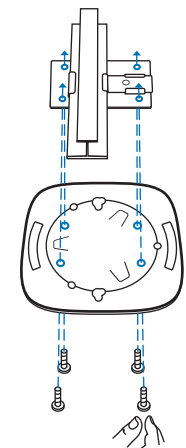
M3x6 Pan-head Screws
(Qty.5)



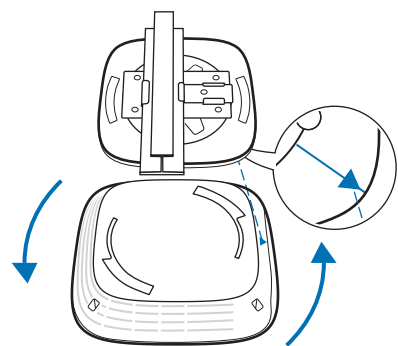
- 1 Position the Ceiling T-rail Clip and push the movable part toward the rail base.



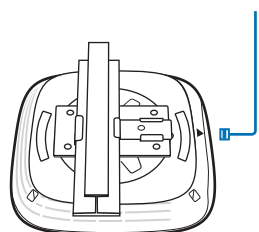
- 2 Use an M3x6 pan-head screw to secure the T-rail Clip onto the ceiling rail.



- 3 Attach the mounting bracket to the Ceiling T-rail Clip using four M3x6 pan-head screws.



- 4 Attach the EAP to the mounting bracket by aligning ARROW 1 (on the EAP) with ARROW 2 (on the mounting bracket), then rotate the EAP clockwise until it locks into place.



- 5 Connect the Ethernet cable to the ETHERNET port.

Option 2: Ceiling Mounting



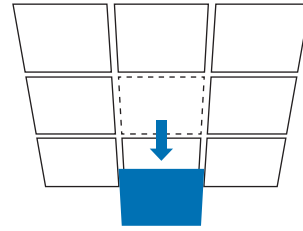
Washers
(Qty.3)



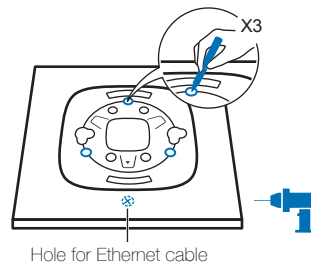
M3x30 Pan-head Screws
(Qty.3)



Wing Nuts
(Qty.3)

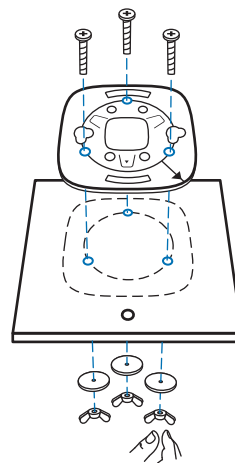


- 1 Remove the ceiling tile.

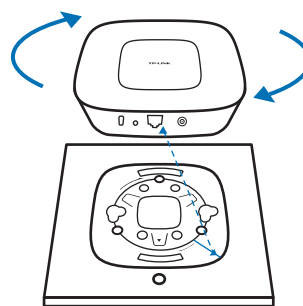


Hole for Ethernet cable

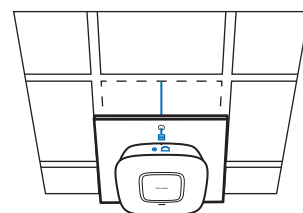
- 2 Place the mounting bracket in the center of the ceiling tile. Mark the three positions of the screw holes and a 10mm hole for the Ethernet cable to feed through. Drill three 4mm holes and a 10mm hole for the Ethernet cable.



- 3 Secure the mounting bracket to the ceiling tile using three M3x30 pan-head screws, washers and wing nuts, as shown on the left.



- 4 Attach the EAP to the mounting bracket by aligning ARROW 1 (on the EAP) with ARROW 2 (on the mounting bracket), then rotate the EAP clockwise until it locks into place.



- 5 Feed the Ethernet cable through the hole and set the ceiling tile back into place. Connect the Ethernet cable to the ETHERNET port.

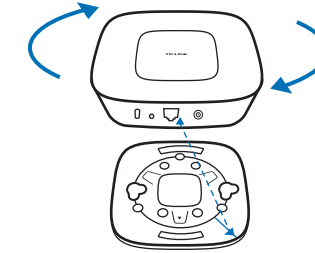
Option 3: Wall Mounting



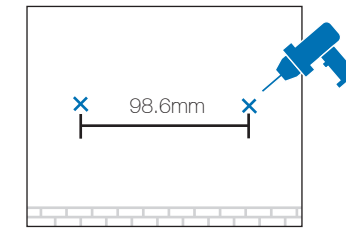
M3x28 Plastic Wall Anchors
(Qty.3)



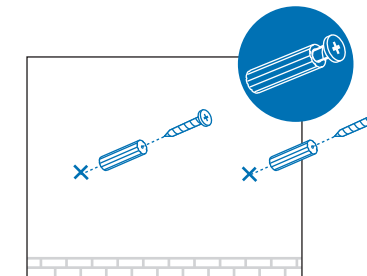
M3x20 Self-tapping Screws
(Qty.3)



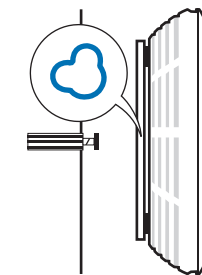
- 1 Attach the EAP to the mounting bracket by aligning ARROW 1 (on the EAP) with ARROW 2 (on the mounting bracket), then rotate the EAP clockwise until it locks into place.



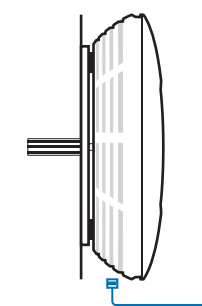
- 2 Make two small pencil marks on the wall. Make sure the two marks are level and should be 98.6mm apart. Drill two 6mm holes through the center of your marks.



- 3 Insert the plastic wall anchors into the 6mm holes and drive the self-tapping screws into the anchors. Do not drive the screws all the way in and leave enough clearance to hang the EAP.



- 4 Hang the EAP on the screws. Make sure the EAP is firmly seated against the wall.



- 5 Connect the Ethernet cable to the ETHERNET port on the EAP.