

# Quick Installation Guide

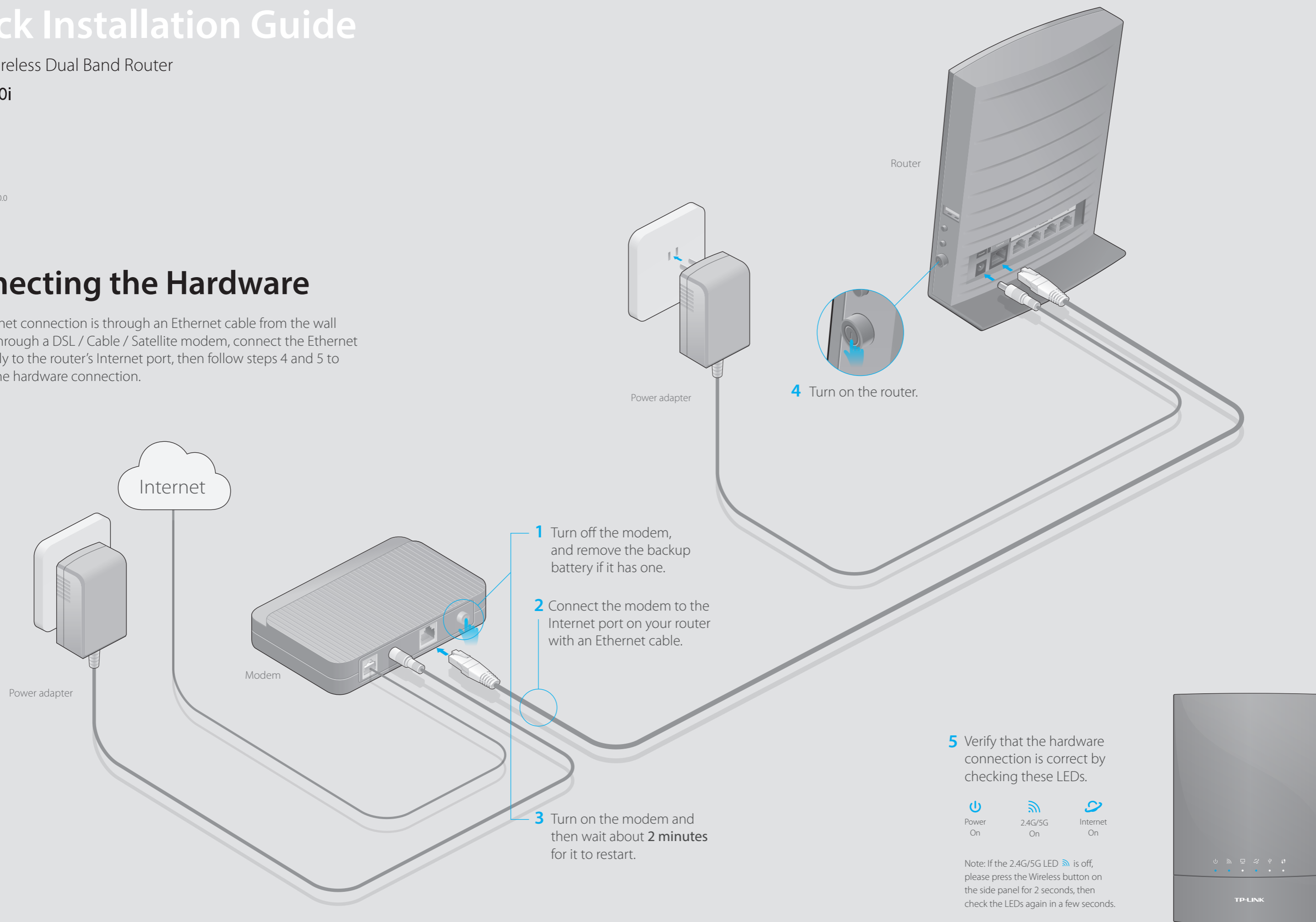
AC750 Wireless Dual Band Router

Archer C20i

7106505276 REV3.0.0

## Connecting the Hardware

If your Internet connection is through an Ethernet cable from the wall instead of through a DSL / Cable / Satellite modem, connect the Ethernet cable directly to the router's Internet port, then follow steps 4 and 5 to complete the hardware connection.

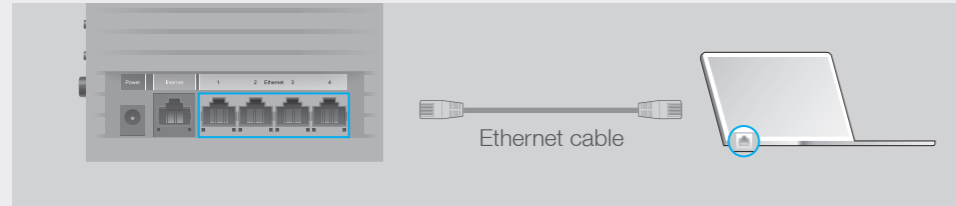


# Configuring the Router

## 1. Connecting your computer to the router (Wired or Wireless).

### Wired

Turn off the Wi-Fi on your computer and connect the devices as shown below:



### Wireless

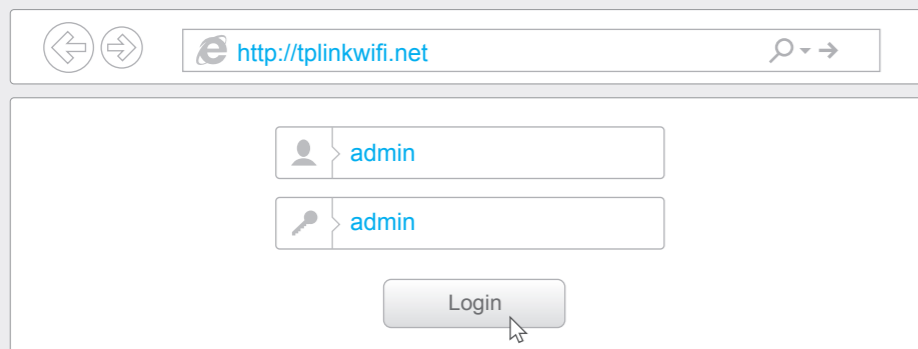
Connect wirelessly by using the SSID (network name) and Wireless Password printed on the product label at the bottom of the router.



## 2. Configuring the router via a web browser or the CD setup wizard.

### Option 1 Via a web browser

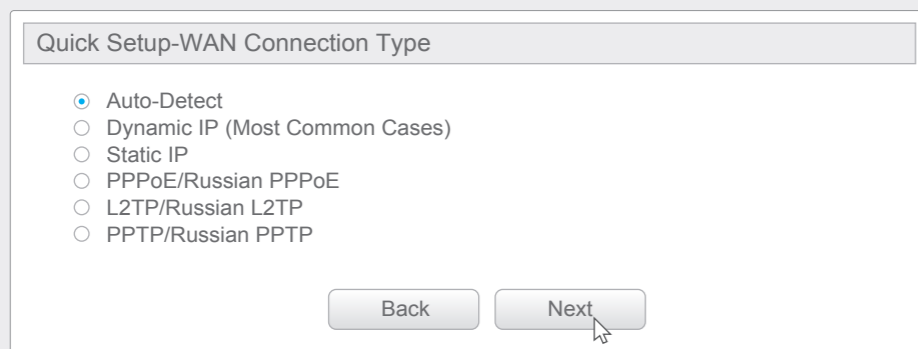
**A** Enter <http://tplinkwifi.net> or <http://192.168.0.1> in the address bar of a web browser. Use **admin** for both username and password, and then click **Login**.



**B** Follow the step-by-step instructions of the Quick Setup to complete the initial configuration.

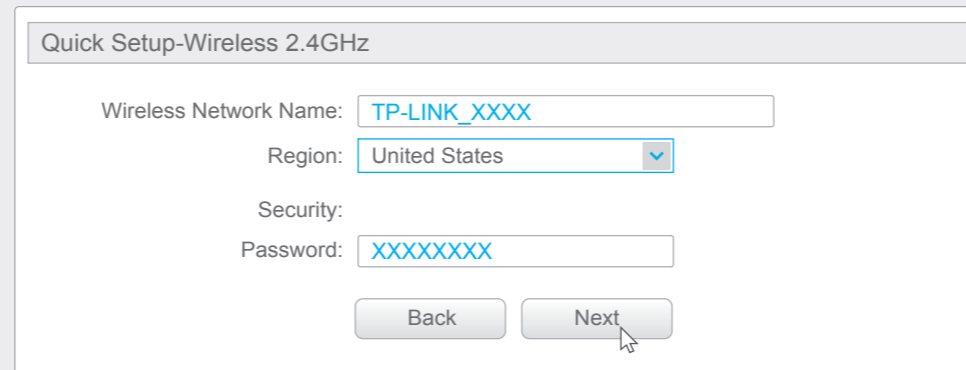
### Notes

- 1: If the login window does not appear, please refer to FAQ > Q1.
- 2: If you are unsure of what your connection type is, select **Auto-Detect** and click **Next**, then follow the instruction on screen to complete the initial setup.



3: You may personalize your 2.4GHz and 5GHz wireless network names and passwords. Once done, you will have to reconnect to your Wi-Fi network using the new wireless network name and password.

\* Per FCC regulations, all Wi-Fi products marketed in the U.S. must be fixed to the U.S. region only.

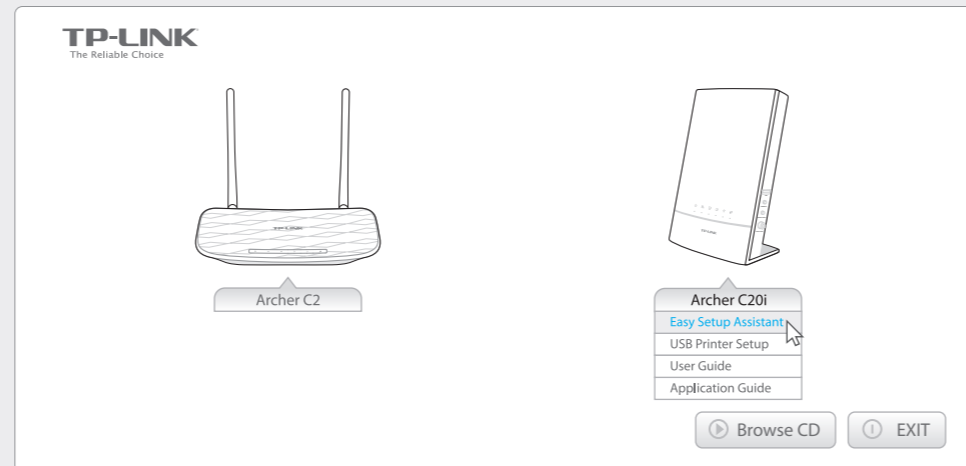


### Option 2 Via the CD Setup Wizard (For Windows users only)

Note: Mac OS and Linux users, please follow Option 1 to configure the router.

**A** Insert the TP-LINK Resource CD into the CD-ROM drive.

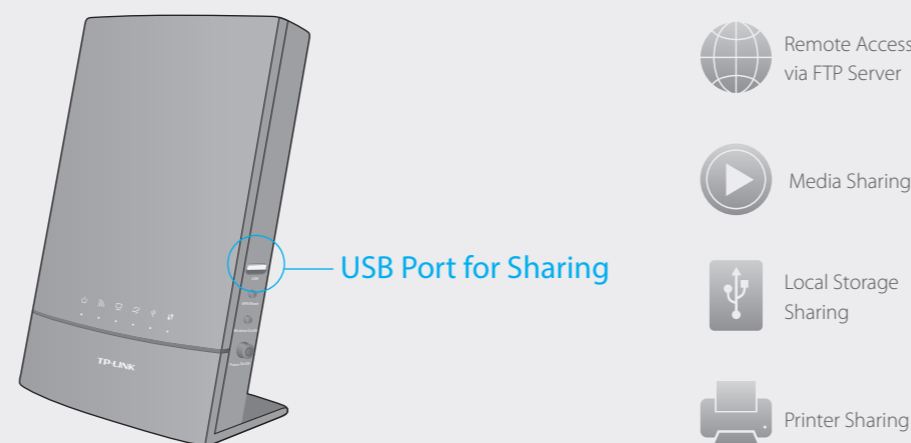
**B** Select **Archer C20i** and click **Easy Setup Assistant**.



**C** Follow the **Easy Setup Assistant** to complete the initial configuration of the router.

## USB Features

Use the USB port for media sharing, storage sharing and printer sharing across your local network. You can also setup an FTP server to access your files remotely through the Internet.



To learn more about the USB features, visit <http://tp-link.com/app/usb>, or retrieve the information from the Resource CD, or simply scan the QR code.



# Tether App

TP-LINK Tether app lets you conveniently access the router and:

- View information about the clients on your network.
- Block network access from specific users or devices.
- Set up Parental Control with access time and content restrictions.
- Change the basic wireless network settings easily.

## How to begin?

1. Scan the QR code to download the TP-LINK Tether app from the Apple App Store or Google Play.
2. Ensure your smart device is wirelessly connected to your home network.
3. Launch the Tether app and start managing your home network.



## FAQ (Frequently Asked Questions)

### Q1. What can I do if the login window does not appear?

- A1. If the computer is set to a static or fixed IP address, change the setting to obtain an IP address automatically.
- A2. Verify that <http://tplinkwifi.net> is correctly entered in the web browser. Alternatively, enter <http://192.168.0.1> or <http://192.168.1.1> in the web browser and press Enter.
- A3. Use another web browser and try again.
- A4. Reboot your router and try again.
- A5. Disable then re-enable the network adapter being used.

### Q2. What can I do if I cannot access the Internet?

- A1. Check if the Internet is working properly by connecting a computer directly to the modem using an Ethernet cable. If it is not, contact your Internet Service Provider.
- A2. Log in to the Web Management page of the router, and go to the **Status** page to check whether the WAN IP address is valid or not. If it is, please run the Quick Setup again; otherwise, recheck the hardware connection.
- A3. For cable modem users, log in to the Web Management page of the router. Go to **Network > MAC Clone**, click **Clone MAC Address** and click **Save**, then reboot both the modem and the router.
- A4. Reboot your router and try again.

### Q3. How do I restore the router to its factory default settings?

- A1. While the router is powered on, press and hold the **WPS/Reset** button on the back until the Power LED starts blinking.
- A2. Log in to the Web Management page of the router. Go to **System Tools > Factory Defaults**, click **Restore**. The router will restore and reboot automatically.

### Q4. What can I do if I forgot my web management password?

- A. Refer to FAQ > Q3 to reset the router, and then use **admin** (all lowercase) for both username and password to log in.

### Q5. What can I do if I forgot my wireless network password?

- A1. The factory default Wireless Password/PIN is printed on the product label of the router.
- A2. Log in to the router's Web Management page, and go to **Wireless > Wireless Security** to obtain or reset your wireless password.