



LG 290C Quick Start Guide



Installing the Battery

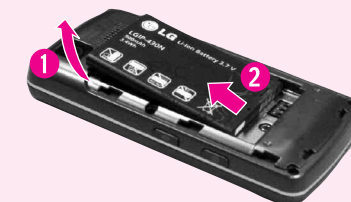
To install the battery, insert the battery into the opening on the back of the phone. Put the battery cover on the battery and push it slightly upwards.

Removing the Battery

- With your phone turned off, press in on the battery cover release (1) on the back of your phone, slide the battery cover up and lift off (2).

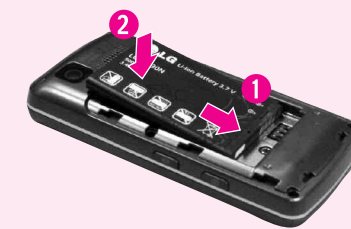


- Lift the battery up (1) and away (2) from the phone, as shown.



Replacing the Battery

- To reinstall the battery, align the battery contacts (1) with those in the battery compartment. Press the battery down until it clicks into place (2).
- With the battery in position in the phone, replace the battery cover on the back of your phone so that it fits.



- Depending on the software installed or your service provider or country, some of the descriptions in this guide may not match your phone exactly.
- Depending on your country, your phone and accessories may appear different from the picture in this guide.

Charging the Battery

Your phone is powered by a rechargeable Li-ion battery. Use the wall charger to charge the battery, and use only LG approved batteries and chargers.

Note: You must fully charge the battery before using your phone for the first time. A fully discharged battery requires up to 4 hours of charge time.

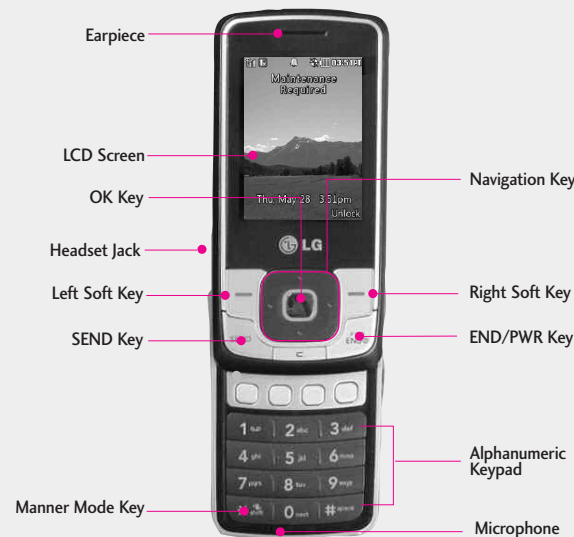
Note: For connection to an electrical supply not located in the U.S., you must use an adaptor of the proper configuration for the power outlet. Using the wrong adaptor can damage your phone and void your warranty.

- Open the cover on the accessory port on the left side of the phone and plug the wall charger connector into the jack. Be sure to orient the connector as shown to avoid damaging your phone.
- Plug the charger into a standard AC wall outlet.
- When the phone is completely charged (), unplug the charger from the wall outlet.
- Remove the charger from the phone by gently pulling out the connector. Replace the plastic cover over the open jack.

Important: The battery charging function may stop when you are on a call. To avoid damage to the battery, do not remove the battery from the phone while charging. Make sure the wall charger is disconnected from the phone before removing the battery.



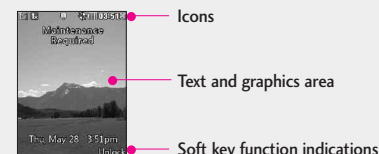
Phone layout and key functions



- Large, easy-to-read, 7-line backlight LCD with status icons.
- Paging, messaging, voice mail, and caller ID.
- 22-key keypad.
- Speaker phone feature.
- Menu-driven interface with prompts for easy operation and configuration.
- Any key answer, auto answer, auto retry, one-touch and speed dialing with 99 memory locations.
- Bilingual (English and Spanish) capabilities.
- Internal Antenna, described as 'antenna' throughout this user guide.

Display

Your phone is in Idle mode when you are not on a call or using a menu. You must be in Idle mode to dial a phone number.



Your phone displays the following status indicators on the top of the screen:

Icon Description		
Signal strength	Silence All	SSL
Airplane Mode	Silence All & Speaker	TTY
Battery Strength	Vibrate Only	Location On
In Call State	Vibrate & Speaker	E911 Only
No Service	Alarm Only	Active Data
New Text/Picture Msg	Alarm & Speaker	Dormant Data
New Voicemails	Alarm	Voice Privacy
Msg & Voicemail	Calendar	Announce
Ring	Alarm & Calendar	Announce Ring
Ring & Speaker	Roaming	Bluetooth On
1 Beep	Digital	Device Connected
1 Beep & Speaker	1X	Shown to All

Turning the Phone On or Off

- Install a charged battery or connect the phone to an external power source such as a cigarette lighter charger or hands-free car kit.
- Press until the LCD screen lights up.
- Press and hold until the display turns off.

Changing the display language

Allows you to use the bilingual feature according to your preference. Choose between English and Spanish.

- In Idle mode, press the Left soft key to access Main menu.
- Select → → .
- Use to select English or Spanish, then press .

Making Calls

- Make sure the phone is turned on. If not, press for about 3 seconds.
- Enter the phone number (include the area code if needed).
- Press . If the phone is locked, enter the lock code.
- Press to end the call.

Recent Calls

The Recent Calls Menu is a list of the last phone numbers or Contacts entries for calls placed, accepted, or missed. It is continually updated as new numbers are added to the beginning of the list and the oldest entries are removed from the bottom of the list.

Note: To view a quick list of all your recent calls, press Key while in standby mode.

- Missed Calls :** Allows you to view the list of missed calls; up to 40 entries.
Press Left Soft Key , , → Use to highlight an entry.
- Received Calls :** Allows you to view the list of incoming calls; up to 40 entries.
Press Left Soft Key , , → Use to highlight an entry.
- Dialed Calls :** Allows you to view the list of outgoing calls; up to 40 entries.
Press Left Soft Key , , → Use to highlight an entry.
- All Calls :** Allows you to view the list of missed, received and dialed calls; up to 120 entries.
Press Left Soft Key , , → The history of all calls are displayed.
- Call Timer :** Allows you to view the duration of selected calls.
Press Left Soft Key , , → Use to highlight a call type (below).
Last Call/ Home Calls/ Roam Calls/ All Calls

Sound

Options to customize your phone's sounds:

Ringers

- Select All Calls/ Caller ID/ No Caller ID/ Restricted Calls.
- Select Audios / My Ringers.
- Use to highlight the ringtone.
- Press Play to play the ringtone, and Set to set the ringtone to your phone.
- Press Buy Ringtones to purchase ringtones.

Volume

- Select Master Volume/ Keypad/ Earpiece/ Speaker.
- Use to adjust the volume of the function, then press to save the setting.

Using the menus

Selecting or Modifying a Menu or Feature :

- Press to access Main menu.
- Press the Navigation keys to reach a desired menu and then press .
- If the menu contains any submenus, locate the one you want by pressing the Navigation keys . Press to enter the submenu.
If the selected menu contains additional submenus, repeat this step.
- Press the Navigation keys to find the setting of your choice.
- Press to confirm your chosen setting.

Menu map

1. Prepaid	4. Recent Calls	8. Tools
1.1 Add Airtime	4.1 Missed Calls	8.1 Voice Command
1.2 Buy Airtime	4.2 Received Calls	8.2 Ez Tip Calc
1.3 My Phone Number	4.3 Dialed Calls	8.3 Calculator
1.4 Airtime Info	4.4 All Calls	8.4 World Clock
1.5 Airtime Display	4.5 Call Timer	8.5 Stopwatch
1.6 Serial Number		8.6 Unit Converter
1.7 Code Entry Mode	5. My Folder	9. Settings
	5.1 Take Photo	9.1 Sound
2. Contacts	5.2 Record Voice	9.2 Display
2.1 New Contact	5.3 Images	9.3 Keypad Timer
2.2 Contact List	5.4 Audios	9.4 Security
2.3 Groups		9.5 Call Settings
2.4 Speed Dials	6. Browser	9.6 Bluetooth
2.5 My Name Card	7. My Schedule	9.7 System
	7.1 Alarm Clock	9.8 Phone Memory
3. Messages	7.2 Calendar	9.9 Phone Info
3.1 New Text Message	7.3 Notepad	
3.2 New Picture Message		
3.3 Inbox		
3.4 Sent		
3.5 Draft		
3.6 Voicemail		
3.7 Templates		
3.8 Settings		
3.9 Delete All		

Entering text

In a text input field, press the **[*#]** until the input mode indicator you want appears. To switch between **T9 mode** and **ABC mode**, press and hold the **[*#]**. To access Symbols, press and hold the **[#*]**. To return to **T9** and **ABC** modes, press and hold **[*#]** again.

T9 mode

- Press **2** to **9** to start entering a word. Press each key once for one letter. The word you are entering appears on the display. It may change with each key-press. Finish entering the word before editing or deleting any keystrokes. Example: Press **4, 3, 5, 5, and 6**.

- Press **[space]** to insert a space and enter the next word.

ABC mode

Press the keys labeled with the letter you want once for the first letter, twice for the second letter, and so on.

For example, press **2** three times to enter "C" and **5** two times to enter "K".

123 mode

Press the keys corresponding to the digits you want. Press and hold **[*#]** again.

Symbol mode

Press the keys correspondings to the symbol you want and press the **[OK]**. You can press **[left]** or **[right]** to display more symbols.

Tips for entering text

- To move the cursor, press the **[left]**.
- To delete characters one by one, press **[left]**. To delete all of the characters, press and hold **[left]**.
- To insert a space between characters, press **[*#]**.
- To change case in **T9 mode** or **ABC mode**, press **[*#]**.
- To enter punctuation in **T9 mode** or **ABC mode**, press **1** or **0**.

Sending an SMS message

Allows you to send text messages, pages, and e-mail transmissions. Each message will be formatted and sent according to the destination address.

- Enter the recipient's address.
- Press **[OK]** to access the message screen.
- Type your message (text or e-mail).
- Press **[OK]** Send.

A confirmation message is displayed.

Quick feature reference

This section provides brief explanations of features on your phone.

Menu	Description
[left] , 1 , 1	Add Airtime allows you to start an over-the-air request for additional airtime.
[left] , 1 , 2	Buy Airtime allows you to start an over-the-air request for purchase additional airtime.
[left] , 1 , 3	Phone Number displays the phone's programmed MSID or MDN.
[left] , 1 , 4	Airtime Info displays the amount of airtime by the unit and due date information.
[left] , 1 , 5	Airtime Display allows you to disable/enable the display of idle screen, prepaid-related information.
[left] , 1 , 6	Serial Number simply displays the information of your phone's MEID.
[left] , 1 , 7	Code Entry Mode will allow the phone to accept Tracfone-related codes in order to add units, modify specific data and troubleshoot the phone. In using the Code Entry Mode, you can't receive incoming calls or use events alert.
[left] , 2 , 1	Allows you to add a new contact to your Contact List.
[left] , 2 , 2	Allows you to view your Contact List.
[left] , 2 , 3	Allows you to view your grouped Contacts, add a new group, change the name of a group, or delete a whole group.
[left] , 2 , 4	Allows you to view your Speed Dials list, designate new Speed Dials, or remove Speed Dial designations entered in your Contacts.
[left] , 2 , 5	Allows you to view all of your personal Contact information including name and phone numbers. Options from here:
[left] , 3 , 1	Allows you to send text messages, pages, and e-mail transmissions. Each message will be formatted and sent according to the destination address.
[left] , 3 , 2	Allows you to send messages with Text, Image, and Audio.
[left] , 3 , 3	The phone alerts you in 2 ways when you receive a new message by: <ul style="list-style-type: none"> • Displaying a notification message on the screen. • Displaying the message icon (It blinks when the message is urgent).
[left] , 3 , 4	Up to 100 sent text messages or picture messages (50 SMS and 50 MMS) can be stored in the Sent folder. Access the Sent message list to view contents of sent messages and verify whether the transmission was successful or not
[left] , 3 , 5	Displays saved messages and draft messages.
[left] , 3 , 6	Allows you to hear new voice messages recorded in your voicemail box. Your phone will alert you when you receive a new voice message.
[left] , 3 , 7	Allows you to display, edit, and add text phrases. These text strings allow you to reduce manual text input into messages.
[left] , 3 , 8	Allows you to configure settings for Messaging.
[left] , 3 , 9	Allows you to erase the messages stored in your Inbox, Sent, or Drafts message folders. You can also erase all messages at the same time.

Menu	Description
[left] , 4 , 1	Allows you to view the list of missed calls; up to 40 entries.
[left] , 4 , 2	Allows you to view the list of incoming calls; up to 40 entries.
[left] , 4 , 3	Allows you to view the list of outgoing calls; up to 40 entries.
[left] , 4 , 4	Allows you to view the list of missed, received and dialed calls; up to 120 entries.
[left] , 4 , 5	Allows you to view the duration of selected calls.
[left] , 5 , 1	Set the brightness using [left] , zoom using [right] and press [OK] . Options to change other settings.
[left] , 5 , 2	Allows you to add, listen to, and erase short verbal reminders.
[left] , 5 , 3	Allows you to select images to customize your phone's Main Screen or Picture ID.
[left] , 5 , 4	Allows you to choose audio clips.
[left] , 6	Allows you to view Internet content.
[left] , 7 , 1	Allows you to set up to five alarms. At the alarm time, any set alarm will sound the tone of your choice, and an alarm message will be displayed on the LCD screen.
[left] , 7 , 2	Allows you to store and access your agenda(s). Simply enter your appointments in the Calendar, and your phone will alert you with a reminder.
[left] , 7 , 3	Allows you to add, read, edit, and erase notes to yourself.
[left] , 8 , 1	Allows you to make phone calls quickly and easily by voice. Your phone recalls the number from your Contacts, displays it briefly, and then dials it. This menu also includes features that are useful for those who are driving or blind. It delivers time information by voice and allows you to check missed calls, messages and voicemails.
[left] , 8 , 2	Allows you to quickly and easily estimate the tip and total amount of a bill by inputting the bill amount before tip, the tip percentage, and dividing it by the number of people paying.
[left] , 8 , 3	Allows you to perform simple mathematical calculations. You can enter numbers up to the eighth decimal place.
[left] , 8 , 4	Allows you to determine the current time in another time zone or country.
[left] , 8 , 5	Stopwatch is available just as common stopwatches we see and use in daily life.
[left] , 8 , 6	Allows you to convert units of Area, Length, Temperature, Mass, Volume and Velocity.
[left] , 9 , 1	Options to customize your phone's sounds: <ul style="list-style-type: none"> 1.1 Ringers 1.2 Volume 1.3 Message Alerts 1.4 Alert Type 1.5 Service Alerts

Menu	Description
[left] , 9 , 1	Options to customize your phone's display screen. <ul style="list-style-type: none"> 2.1 Wallpaper 2.2 Banner 2.3 Backlight 2.4 Menu Style 2.5 Languages 2.6 Clocks & Calendar 2.7 Font Settings 2.8 Word Prediction 2.9 Name Match for Dialing
[left] , 9 , 3	The Security menu allows you to secure the phone electronically.
[left] , 9 , 4	The Security menu allows you to secure the phone electronically. <ul style="list-style-type: none"> 4.1 Lock Phone 4.2 Restrictions 4.3 Change Lock Code 4.4 Reset Default
[left] , 9 , 5	The Call Settings menu allows you to designate how the phone handles both incoming and outgoing calls. <ul style="list-style-type: none"> 5.1 Answer Options 5.2 Auto Retry 5.3 One-Touch Dial 5.4 Voice Privacy 5.5 Airplane Mode 5.6 TTY Mode
[left] , 9 , 6	<ul style="list-style-type: none"> 6.1 Paired Devices 6.2 Power 6.3 My Visibility 6.4 My Bluetooth Name 6.5 My Bluetooth Info
[left] , 9 , 7	The System menu allows you to designate specific system network settings. <ul style="list-style-type: none"> 7.1 Network 7.1.1 System Select 7.1.2 Serving System 7.2 Location
[left] , 9 , 8	Allows you to check out the memory status of your phone. <ul style="list-style-type: none"> 8.1 Reserved Memory 8.2 Multimedia
[left] , 9 , 9	The Phone Info menu provides you with specific information pertaining to your phone model. <ul style="list-style-type: none"> 9.1 My Number 9.2 ESN/MEID 9.3 Icon Glossary 9.4 Version

TIA Safety Information

The following is the complete TIA Safety Information for wireless handheld phones.

Antenna Care

Use only the supplied or an approved replacement antenna. Unauthorized antennas, modifications, or attachments could damage the phone and may violate FCC regulations.

Phone Operation

NORMAL POSITION: Hold the phone as you would any other telephone with the antenna pointed up and over your shoulder.

Tips on Efficient Operation

For your phone to operate most efficiently: Don't touch the antenna unnecessarily when the phone is in use. Contact with the antenna affects call quality and may cause the phone to operate at a higher power level than otherwise needed.

Driving

Check the laws and regulations on the use of wireless phones in the areas where you drive and always obey them. Also, if using your phone while driving, please observe the following:

- Give full attention to driving -- driving safely is your first responsibility;
- Use hands-free operation, if available;
- Pull off the road and park before making or answering a call if driving conditions or the law require it.

Electronic Devices

Most modern electronic equipment is shielded from RF signals. However, certain electronic equipment may not be shielded against the RF signals from your wireless phone.

Pacemakers

The Health Industry Manufacturers Association recommends that a minimum separation of six (6) inches be maintained between a handheld wireless phone and a pacemaker to avoid potential interference with the pacemaker. These recommendations are consistent with the independent research by and recommendations of Wireless Technology Research.

Persons with pacemakers:

- Should ALWAYS keep the phone more than six (6) inches from their pacemaker when the phone is turned ON;
- Should not carry the phone in a breast pocket;
- Should use the ear opposite the pacemaker to minimize the potential for interference;
- Should turn the phone OFF immediately if there is any reason to suspect that interference is taking place.

Hearing Aids

Some digital wireless phones may interfere with some hearing aids. In the event of such interference, you may want to consult your service provider (or call the customer service line to discuss alternatives).

Consumer Information on SAR

This Model Phone Meets the Government's Requirements for Exposure to Radio Waves. Your wireless phone is a radio transmitter and receiver. It is designed and manufactured not to exceed the emission limits for exposure to Radio Frequency (RF) energy set by the Federal Communications Commission of the U.S. Government. These limits are part of comprehensive guidelines and establish permitted levels of RF energy for the general population. The guidelines are based on standards that were developed by independent scientific organizations through periodic and thorough evaluation of scientific studies. The standards include a substantial safety margin designed to assure the safety of all persons, regardless of age and health.

The exposure standard for wireless mobile phones employs a unit of measurement known as the Specific Absorption Rate, or SAR. The SAR limit set by the FCC is 1.6 W/kg. Tests for SAR are conducted using standard operating positions specified by the FCC with the phone transmitting at its highest certified power level in all tested frequency bands. Although SAR is determined at the highest certified power level, the actual SAR level of the phone while operating can be well below the maximum value. Because the phone is designed to operate at multiple power levels to use only the power required to reach the network, in general, the closer you are to a wireless base station antenna, the lower the power output.

Before a phone model is available for sale to the public, it must be tested and certified to the FCC that it does not exceed the limit established by the government-adopted requirement for safe exposure. The tests are performed in positions and locations (e.g., at the ear and worn on the body) as required by the FCC for each model.

The highest SAR value for this model phone when tested for use at the ear is 1.3 W/kg and when worn on the body, as described in this user guide, is 0.886 W/kg (body-worn measurements differ among phone models, depending upon available accessories and FCC requirements). While there may be differences between SAR levels of various phones and at various positions, they all meet the government requirement for safe exposure.

The FCC has granted an Equipment Authorization for this model phone with all reported SAR levels evaluated as in compliance with the FCC RF emission guidelines. SAR information on this model phone is on file with the FCC and can be found under the Display Grant section of <http://www.fcc.gov/oet/fccid> after searching on FCC ID BEJLG200CM. Additional information on Specific Absorption Rates (SAR) can be found on the Cellular Telecommunications Industry Association (CTIA) website at <http://www.ctia.org>.

* In the United States and Canada, the SAR limit for mobile phones used by the public is 1.6 watts/kg (W/kg) averaged over one gram of tissue. The standard incorporates a substantial margin of safety to give additional protection for the public and to account for any variations in measurements.

