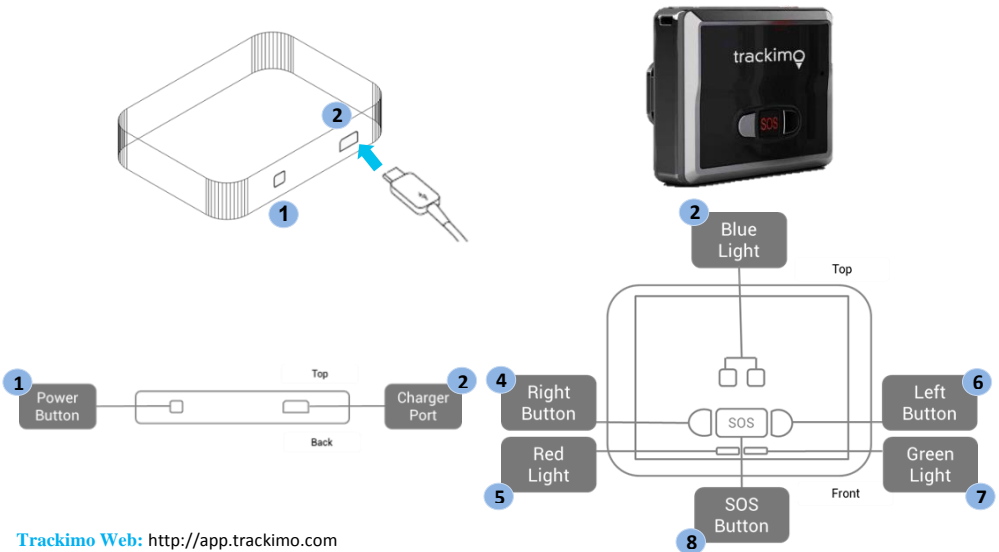


## 1 Your Trackimo Device Parts



**Trackimo Web:** <http://app.trackimo.com>

**iPhone app:** <https://itunes.apple.com/il/app/trackimo/id796838006?mt=8>

**Android App:** <https://play.google.com/store/apps/details?id=com.codepan.trackimo>

## ENGLISH

### 2 What's in the box

This Quick Start Guide, Product Safety and Warranty booklet are also included.

- If any item is damaged or missing, contact your point of purchase for assistance.
- Use only approved accessories.
- Accessories may vary by country or region.

The Package Includes:

- Battery
- Adhesive Velcro
- Adhesive Magnet
- Water Resistant Silicon Sleeve
- A USB Charging Cable

### 3 Install and Charge the Battery

Your battery will not be installed or charged when you first unpack your device.

Remove the back cover by gently pressing it and sliding it off, and insert the battery. Slide the cover back on.

To charge, connect one end of the data cable to the charger port at the bottom of the device **2** and the other end to a USB power adaptor. Then connect the USB adaptor to a power outlet. You can also connect the USB cable to a computer. Charge the device for 12 hours. When charging, the red light **5** blinks. When full, the red light is steady on as long as it is Connected.

### 4 Turn on your device for the first time

Place your device outside in view of the sky and wait at least 15 minutes.

This first-time wait is needed for the device for initial GPS positioning.

Press the red button **1** for at least 3 seconds.

The green light **7** on the front of the device should flash for 3 seconds.

Now you are ready to activate your device. Open the Internet Browser on your computer, go to [trackimo.com](http://trackimo.com) and click "Activate" and follow the instructions. Welcome to Trackimo!

## **FCC Warning:**



This equipment has been tested and found to comply with the limits for a Class B digital device, pursuant to part 15 of the FCC Rules. These limits are designed to provide reasonable protection against harmful interference in a residential installation. This equipment generates, uses and can radiate radio frequency energy and, if not installed and used in accordance with the instructions, may cause harmful interference to radio communications. However, there is no guarantee that interference will not occur in a particular installation. If this equipment does cause harmful interference to radio or television reception, which can be determined by turning the equipment off and on, the user is encouraged to try to correct the interference by one or more of the following measures:

- Reorient or relocate the receiving antenna.
- Increase the separation between the equipment and receiver.
- Connect the equipment into an outlet on a circuit different from that to which the receiver is connected.
- Consult the dealer or an experienced radio/TV technician for help.

Caution: Any changes or modifications to this device not explicitly approved by manufacturer could void your authority to operate this equipment.

This device complies with part 15 of the FCC Rules. Operation is subject to the following two conditions: (1) This device may not cause harmful interference, and (2) this device must accept any interference received, including interference that may cause undesired operation.

## Specific Absorption Rate (SAR) information:

This GPS Tracker meets the government's requirements for exposure to radio waves. The guidelines are based on standards that were developed by independent scientific organizations through periodic and thorough evaluation of scientific studies. The standards include a substantial safety margin designed to assure the safety of all persons regardless of age or health. FCC RF Exposure Information and Statement the SAR limit of USA (FCC) is 1.6 W/kg averaged over one gram of tissue. Device types: GPS Tracker (FCC ID:2AAI6-TRKM010A) has also been tested against this SAR limit. This device was tested for typical body-worn operations with the back of the GPS Tracker kept 0mm from the body. To maintain compliance with FCC RF exposure requirements, use accessories that maintain a 0mm separation distance between the user's body and the back of the GPS Tracker. The use of belt clips, holsters and similar accessories should not contain metallic components in its assembly. The use of accessories that do not satisfy these requirements may not comply with FCC RF exposure requirements, and should be avoided.