



User's Manual
For
VDS-POD-S

Jan 2013

522 Gillingham
Sugar Land, Texas 77478
Phone: (281) 240-7233
Fax: (281) 240-7238

Engineered by  **Naztec**

Terms of Use Agreement

USE OF THIS SOFTWARE MANUAL IS SUBJECT TO THESE TERMS OF USE.

Agreement

Please read this *User Agreement* carefully before using the information provided in this *Manual*. This Agreement explains the terms and conditions governing the use of this *Manual* ("Terms of Use"), and it is your responsibility to read and understand them. By using the *Manual* you expressly agree to be bound by these *Terms of Use* and to follow them as well as all applicable laws and regulations governing the *Manual*. If you do not agree to be bound by these *Terms of Use*, you may not access or use this *Manual*. Trafficware reserves the right to change these *Terms of Use* at any time, effective immediately upon posting the *Manual* from our company website. By continuing to use the *Manual* after we post any such change, you accept the revised *Terms of Use*. If you violate these *Terms of Use*, Trafficware may terminate your use of the *Manual*, bar you from future use of the *Manual*, and take appropriate legal action against you.

Permitted Use

You agree that you are only authorized to read, view and retain a copy of pages of this *Manual* for your own personal use, and that you will not duplicate, download, publish, modify or otherwise distribute the material on this *Manual* for any purpose other than to review product information for personal use or the use of a government or non-profit organization.

No Commercial Use

Users may not use this *Manual* for any commercial purposes such as to sell merchandise or services of any kind. You must obtain our prior written consent to make commercial offers of any kind, whether by advertisements, solicitations, links, or by any other form of communication. Trafficware will investigate and take appropriate legal action against anyone who violates this provision.

Copyright

All content included on this *Manual*, including text, graphics, logos, icons, images, and software is the property of Trafficware, or its content suppliers and is protected by United States and international copyright laws. This compilation (that is, the collection, arrangement and assembly) of all content on this *Manual* is the exclusive property of Trafficware and is protected by U.S. and international copyright laws. Trafficware reserves the right to revise the pages of the *Manual* or withdraw access to them at any time.

Trademarks

The logo and trademarks that appear throughout the *Manual* belong to Trafficware, its affiliates or third party trademark owners, and are protected by U.S. and international trademark laws. Without express prior written permission, you may not display or use in any manner, the logos or trademarks. Nothing in this *Manual* shall be construed as granting any license or other right to the intellectual property or other proprietary rights of Trafficware, its affiliates or any third party, whether by estoppels, implication or otherwise. All contents of the *Manual* are: © Copyright 2012 Trafficware or its licensors. All Rights Reserved.

Disclaimer of Warranty

YOU UNDERSTAND AND EXPRESSLY AGREE THAT YOUR USE OF THE MANUAL AND THE INFORMATION FOUND THERE IS ENTIRELY AT YOUR RISK. TRAFFICWARE AND ITS AFFILIATES AND LICENSORS MAKE NO WARRANTIES OR ANY REPRESENTATIONS OF ANY KIND, EITHER EXPRESS OR IMPLIED, INCLUDING BUT NOT LIMITED TO WARRANTIES OF TITLE OR NON-INFRINGEMENT OR IMPLIED WARRANTIES OF MERCHANTABILITY, FITNESS FOR A PARTICULAR PURPOSE, NON-INFRINGEMENT OR OTHER VIOLATION OF RIGHTS IN RELATION TO THE AVAILABILITY, ACCURACY, VALIDITY, COMPLETENESS, RELIABILITY OR CONTENT OF THESE PAGES AND/OR THE MANUAL. TRAFFICWARE SHALL NOT BE LIABLE FOR ANY DIRECT, INDIRECT, INCIDENTAL, SPECIAL OR CONSEQUENTIAL DAMAGES, LOST PROFITS OR FOR BUSINESS INTERRUPTION ARISING OUT OF THE USE OF OR INABILITY TO USE THIS MANUAL, EVEN IF TRAFFICWARE HAS BEEN ADVISED OF THE POSSIBILITY OF SUCH DAMAGES. TO THE MAXIMUM EXTENT PERMITTED BY LAW, YOU HEREBY RELEASE AND FOREVER WAIVE ANY AND ALL CLAIMS YOU MAY HAVE AGAINST TRAFFICWARE, ITS AFFILIATES AND LICENSORS FROM LOSSES OR DAMAGES YOU SUSTAIN IN CONNECTION WITH YOUR USE OF THE MANUAL.

SOME JURISDICTIONS DO NOT ALLOW EXCLUSION OF CERTAIN WARRANTIES OR LIMITATIONS OF LIABILITY, SO THE ABOVE LIMITATIONS OR EXCLUSIONS MAY NOT APPLY TO YOU. THE LIABILITY OF TRAFFICWARE WOULD IN SUCH CASE BE LIMITED TO THE GREATEST EXTENT PERMITTED BY LAW.

Applicable Law

These *Terms of Use* and all legal issues related to the *Manual* shall be governed by the laws of the State of Texas, without regard to conflict of laws principles. You agree that any dispute involving these terms of use or this *Manual* will be heard in a court with jurisdiction in Fort Bend County, Texas. You further agree that the prevailing party in any legal action will be entitled to recover its reasonable attorneys fees incurred in connection with that action. If for any reason a court of competent jurisdiction finds any provision of these Terms of Use to be unenforceable, the remaining terms will continue in full force and effect.

Entire Agreement

These *Terms of Use* are the final and entire agreement between you and Trafficware with respect to this subject and replace any and prior or contemporaneous understandings or agreements, written or oral, regarding the subject matter. Any waiver of any provision of these Terms of Use shall be effective only if in writing and signed by an authorized representative of

Trafficware.

Document Confidentiality Statement

The information in this document is confidential to the person to whom it is addressed and should not be disclosed to any other person. It may not be reproduced in whole, or in part, nor may any of the information contained therein be disclosed without the prior consent of Naztec, Inc. dba Trafficware.

Any form of reproduction, dissemination, copying, disclosure, modification, distribution, and or publication of this document is strictly prohibited.

FCC Compliance

This device complies with Part 15 of the FCC Rules. Operation is subject to the following two conditions: (1) this device may not cause harmful interference, and (2) this device must accept any interference received, including interference that may cause undesired operation.

FCC ID: MD5-SM02

This equipment has been tested and found to comply with the limits for a Class B digital device, pursuant to part 15 of the FCC Rules. These limits are designed to provide reasonable protection against harmful interference in a residential installation. This equipment generates, uses and can radiate radio frequency energy and, if not installed and used in accordance with the instructions, may cause harmful interference to radio communications. However, there is no guarantee that interference will not occur in a particular installation. If this equipment does cause harmful interference to radio or television reception, which can be determined by turning the equipment off and on, the user is encouraged to try to correct the interference by one or more of the following measures:

- Reorient or relocate the receiving antenna
- Increase the separation between the equipment and receiver
- Connect the equipment into an outlet on a circuit different from that to which the receiver is connected
- Consult the dealer or an experienced radio/TV technician for help.

WARNING: Changes or modifications to this device not expressly approved by Naztec, Inc. dba Trafficware could void the user's authority to operate the equipment.

RF Exposure WARNING: This equipment complies with FCC radio frequency energy exposure limits set forth for an uncontrolled public environment. This equipment should be installed and operated with minimum distance 20 cm between the radiator and your body.

Table of Contents

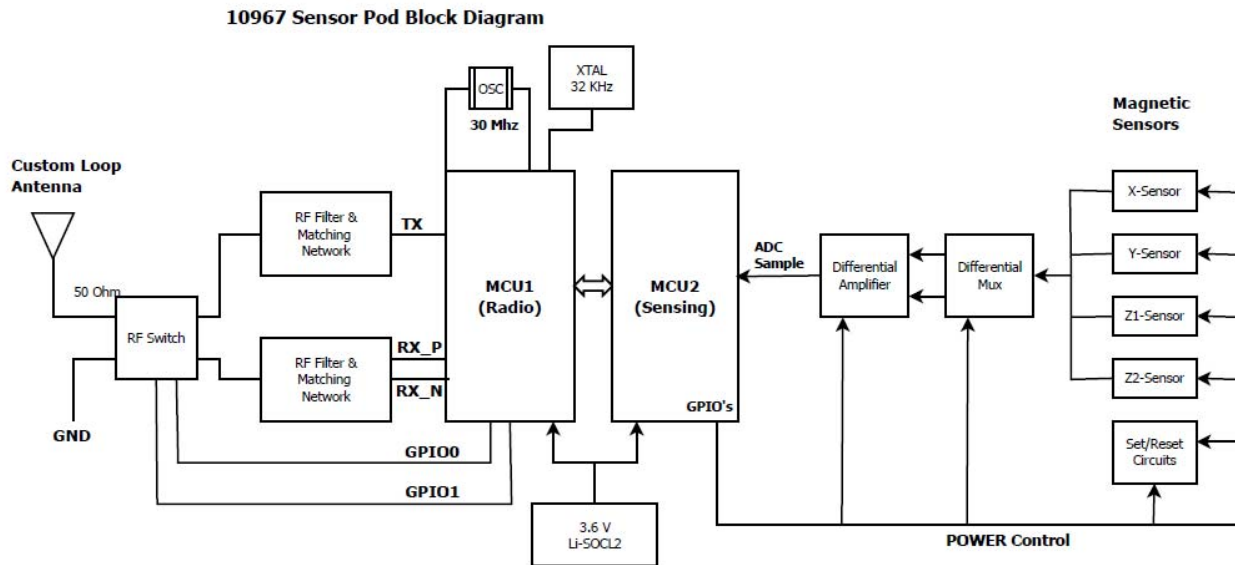
1	INTRODUCTION	1-5
1.1	BLOCK DIAGRAM.....	1-5
1.2	SPECIFICATIONS	1-5
1.3	MECHANICAL DRAWINGS	1-6
1.4	VDS-POD-S INSTALLATION CONSIDERATIONS	1-7
1.4.1	<i>Equipment needed:</i>	<i>1-7</i>
1.4.2	<i>Installing the VDS-POD-S in the road</i>	<i>1-7</i>

CONFIDENTIAL

1 Introduction

This document will provide a brief description on how the VDS-POD-S is being used within FCC limitations. VDS-POD-S contains a configurable, high performance, simple to use 902-928 MHz radio. VDS-POD-S has the capability to transmit at 20 dbm, and an in-built low noise amplifier in the receive path for extended range. The VDS-POD-S is being used as a configurable magnetic sensor.

1.1 Block Diagram

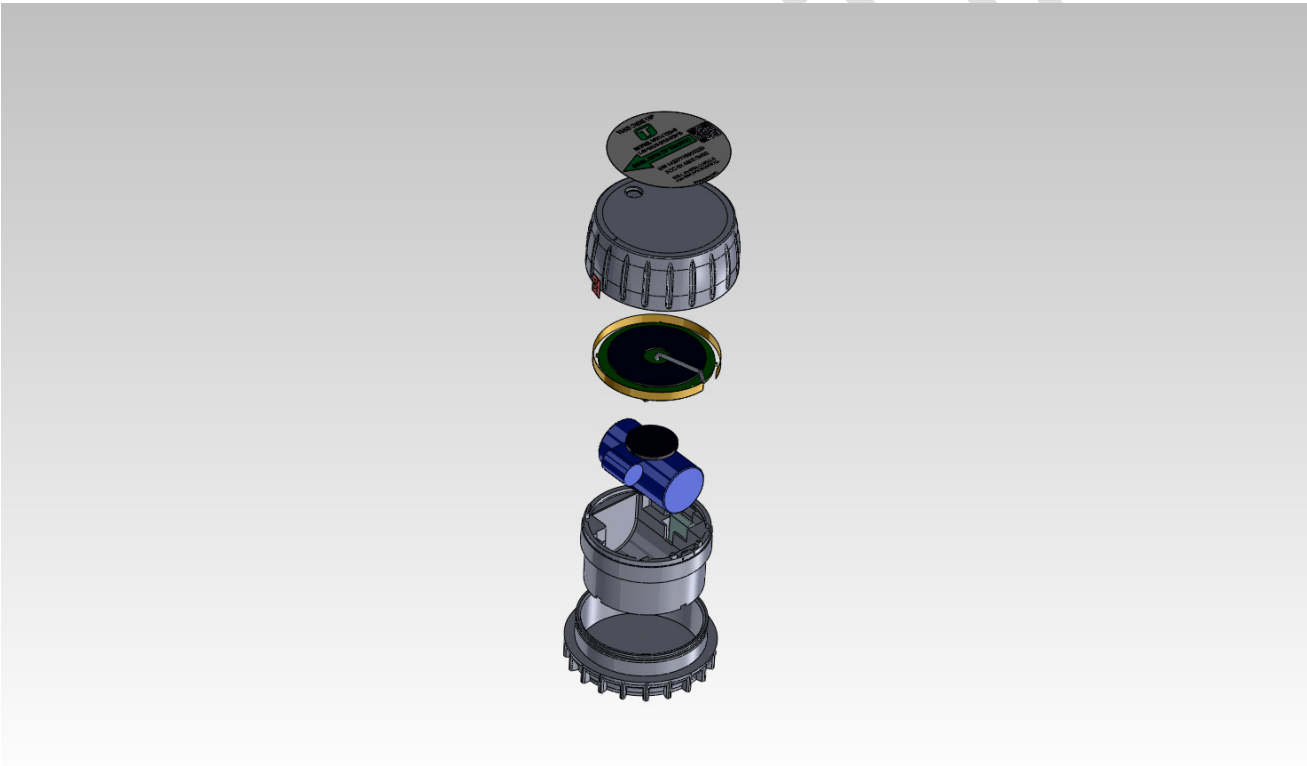


1.2 Specifications

VDS-POD-S Radio Specifications		
Performance	Transmit Power Output	20 dbm
	RF Data Rate	100 Kbps
	Receiver Sensitivity	-104 dbm (Typical)
Power Requirements	Supply Voltage	3.6V Li-SOCL2 Battery
	Transmit Current	90mA
	Idle/Receive Current	23mA
General	Sleep Mode	1.4uA
	Frequency	ISM 902-928MHz
	Spreading Method	Frequency Hopping (FHSS)
	Modulation	GFSK
	Number of Channels	60
	Dimensions	-
	Operating Temperature	-40 to 85 deg C.
	Antenna Options	Custom loop Antenna
	Agency Approvals	FCC

VDS-POD-S Magnetic Sensor Specifications		
Performance	Sensitivity	1 mV/V/gauss
	Field Range	+/- 6 gauss
	Resolution	85 ugauss
	Bridge resistance	1100 ohms
Power Requirements	Bridge offset	+/-2.5 mV
	Supply Voltage	3.6 VDC
General	Bridge Current	3.2 mA
	Axis	X,Y, Z1 and Z2 axis
	Sample rate	Z axis every 8 ms, X,Y axis every 1 second

1.3 Mechanical Drawings



1.4 VDS-POD-S Installation Considerations

Care shall be taken to insure that the Sensor housing is not punctured or crushed. The sensor contains a Lithium Thionyl Chloride battery and certain precautions shall be taken. Dispose the sensor housings with batteries in accordance with local regulations.

A label is affixed on the top of the sensor which contains a unique ID and an arrow for the direction of traffic flow. The unique ID is used for configuring the system so the Access Point only talks to the sensors at this specific location and not Access Points nearby at other intersections. Record the ID of each sensor and their location for use when configuring the User Interface.

1.4.1 Equipment needed:

- Coring Drill with 4" diamond bit. Water is needed for the core drill to cool the bit during drilling.
- Chisel for cleaning the hole out.
- Shop Vacuum for removing the debris out of the hole after core is removed.
- Propane torch to dry out the hole before sealant is applied.
- Epoxy, a two part Joint sealant. Fabick Joint sealant is recommended.

1.4.2 Installing the VDS-POD-S in the road

IMPORTANT: Safety glasses are required at all times.

A manufacturers label is affixed on the top of the VDS-POD-S which contains an arrow for the direction of traffic flow.

1. Mark the area of the desired VDS-POD-S location.
 2. Core a hole approximately 4.0" diameter and 2.75" deep into the pavement.
 3. Remove any debris with chisel to clean out the hole.
 4. Dry hole with propane torch to remove any moisture.
 5. Fill hole with approximately 1" of sealant and place VDS-POD-S in hole with arrow pointing with the flow of traffic.
 6. Add sealant to completely cover the VDS-POD-S.
 7. Maintain VDS-POD-S level about 0.25" from the road surface until sealant dries in approximately 3 minutes.
-

User Agreement, 1-2

CONFIDENTIAL