

852

User's Manual



Published on 12-Dec-2008

Note and Warning

- **852 uses AAA battery*2. If 852 used in temperature lower than -10°C or higher than 60°C, its battery capability will decrease. Please leave the 852 far from heat or high temperature environment. In addition, do not expose your 852 in temperature higher than 140°C/60°C. If you do not follow these rules, the battery may become heat, explode or burn itself, and this will lead to very serious damage.**
 - **While in the hospital, turning off the 852 is recommended. Like other common equipments do, wireless GPS receiver may also affect these medical equipments which use radio frequency and make these equipments malfunction.**
 - **For a long period not using 852, take out the battery and store it in dry/cool places.**
 - **For safety, keep the 852 and all accessories out of small children's reach.**
 - **We assume no responsibility for any damages and loss resulting from the use of this manual and also by deletion of data as a result of malfunction, dead battery, or misuse of the product in any way.**
 - **Use only the supplied and approved accessories. Unauthorized accessories, antenna, modifications or attachments could damage the 852, and may violate regulations governing radio devices.**
 - **Use a dry, clean soft cloth to clean the unit. Do not use harsh cleaning solvents, chemicals, or strong detergents.**
 - **Do not attempt to open the 852 yourself. Unauthorized hacking may damage the unit, and void your warranty.**
-

Table of Contents

Chapter1. Before you begin	4
1.1 Introduction	4
1.2 Feature overview	4
1.3 Specification	5
1.4 Buttons and Description	7
1.5 ICON LED Functional Description	8
1.6 Accessories	9
Chapter2. Getting started	10
2.1 Turn on/off 852	10
2.2 Button description	10
2.3 Sleep mode	11
2.4 Connecting your handheld device with 852	11
2.5 Helpful Tips	15
Chapter3. How to configure your GPS Record?	16
3.1 Driver Installation	16
3.2 GpsView software	16
3.2.1 Connect USB cable between GPS and laptop	16
3.2.2 Executing GpsView Program	17
Chapter 4 Using Photo Tagger software	21
4.1. Execute and install software utility Photo Tagger	21
4.2. Google Earth	21
4.3. Software Utility --- 852	21
Appendix	22

Appendix A. locr GPS Photo	22
Appendix B. Certification	24
Appendix C. Warranty Information	26

Chapter1. Before you begin

1.1 Introduction

The TripMate852 features an all-in-one, cost-effective portable GPS logger solution. When you travel in different country, it allows you to record your routes by ways of time/ distance/ speed. The 852 include a one inch LCD, as the real time, moving speed, distance measurement and position information, all of the message always can shown on the LCD. Through user friendly software utility, it can combine the beautiful pictures and record routes show on the map. This recorder is small and robust, ideal to carry everywhere for applications such as route tracking, mountain climbing or fleet management.

1.2 Feature overview

- ◎ MTK 3329 chip**
- ◎ Smart log function**
- ◎ Receiver & data logger dual function design**
- ◎ Vibration sensor for power saving**
- ◎ Micro SD card for POI storage**
- ◎ Powered by AAA battery*2**

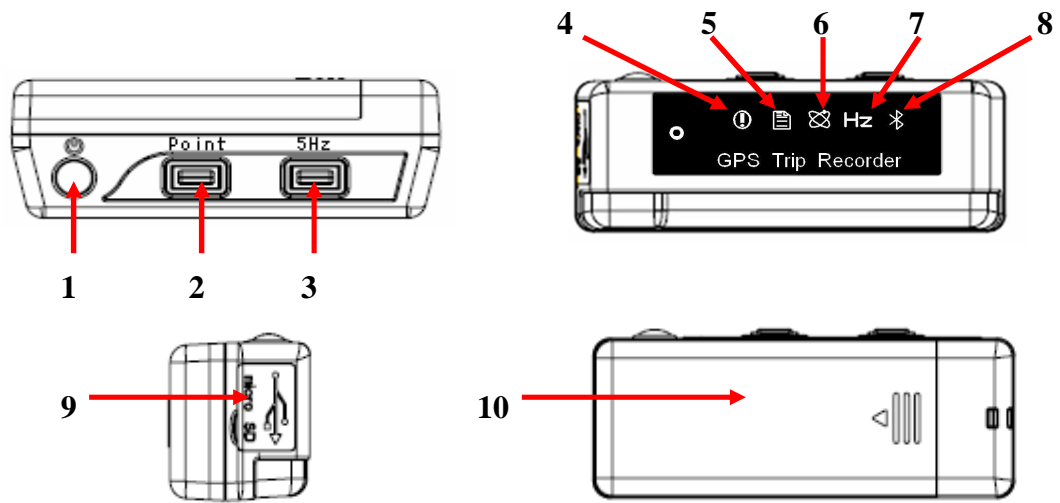
1.3 Specification

General			
Frequency	L1,1575.42MHz	C/A Code	1.023Mhz
Datum	WGS84		
Performance Characteristics			
Position Accuracy	Without aid: 3.0m 2D-RMS	Velocity Accuracy	Without aid: 0.1 m/s
	<3m CEP(50%) without SA(horizontal		DGPS(WAAS,EGNOS,MSAS): 0.05m/s
	DGPS(WAAS,EGNOS,MSAS) : 2.5m	Acceleration	Without aid: <4g
Timing Accuracy	50ns RMS		DGPS(WAAS,EGNOS,MSAS): <4g
Reacquisition Time	<1s	Hot start	1.5s
Warm start	34s	Cold start	35s
AGPS	<15s	Sensitivity	Acquisition: -148dBm Max.
Update	1Hz		Tracking: -165dBm Max.
Dynamic			
Altitude	Maximum 18,000m	Acceleration	Maximum 4g
Velocity	Maximum 515m/s		
Power			
Operation Time	16hours	Battery	AAA battery*2
I/O			

Baudrate	115200 bps	Protocol	NMEA 0183 v3.01
Environment			
Operation Temperature	-10° to 50°		
Interface			
USB Bridge	Fully compliant with USB2.0	Bluetooth	Fully compliant with Bluetooth V1.2
	12Mbps		0dBm(Typical), Class II
SD	Micro SD card		Up to 10 meters
			Serial Port Profile(SPP)
			2.4GHz~2.4835GHz ISM Band
Others			
Weight (g)	57.5g(with battery)	Dimension	72*27x25mm
	36.5g(without battery)	NMEA	GGA,GSA,GSV,RMC






*Citation MTK original chipset spec.

1.4 Buttons and Description



1. Power on/off button
2. Point button
3. 5Hz button
4. Memory warning light
5. Log light
6. Satellite light
7. 1sec or 5sec log switch button
8. Bluetooth light
9. USB & Micro SD slot
10. Battery Cover

1.5 ICON LED Functional Description

Symbol	Category	Color	Status	Function
	MEMORY WARNING ICON	Red	Off	Memory capacity is big than 20%.
			Blinking for 2 sec	Memory is too low and less than 20%.
			On	Memory is full.
	LOG ICON	Green	Off	No log
			Blinking for 2 sec	In log mode
	SATELLITE ICON	Orange	On	Acquiring satellites, GPS position not fixed.
			Blinking for 2 sec	GPS position is fixed, Navigation.
	5Hz ICON	Green	Off	Every 1 second log one time
			Blinking for 2 sec	Every 0.2 second log one time
	BLUETOOTH ICON	Blue	On	Bluetooth light on but not connected to any Bluetooth devices yet.
			Blinking for 5 sec	Bluetooth is connected and ready for data transmission.

1.6 Accessories

Congratulations on your purchase of the 852. Before you start using 852, please make sure if your package includes the following items. If any item is damaged or missing, please contact your dealer at once.

- ◎ **Driver CD x1**
- ◎ **USB cable x1**
- ◎ **AAA battery x2**
- ◎ **Quick start guide x1**
- ◎ **Micro SD 256M x1**

*Unit package contents may vary depending on countries without prior notice.

Chapter2. Getting started

2.1 Turn on/off 852

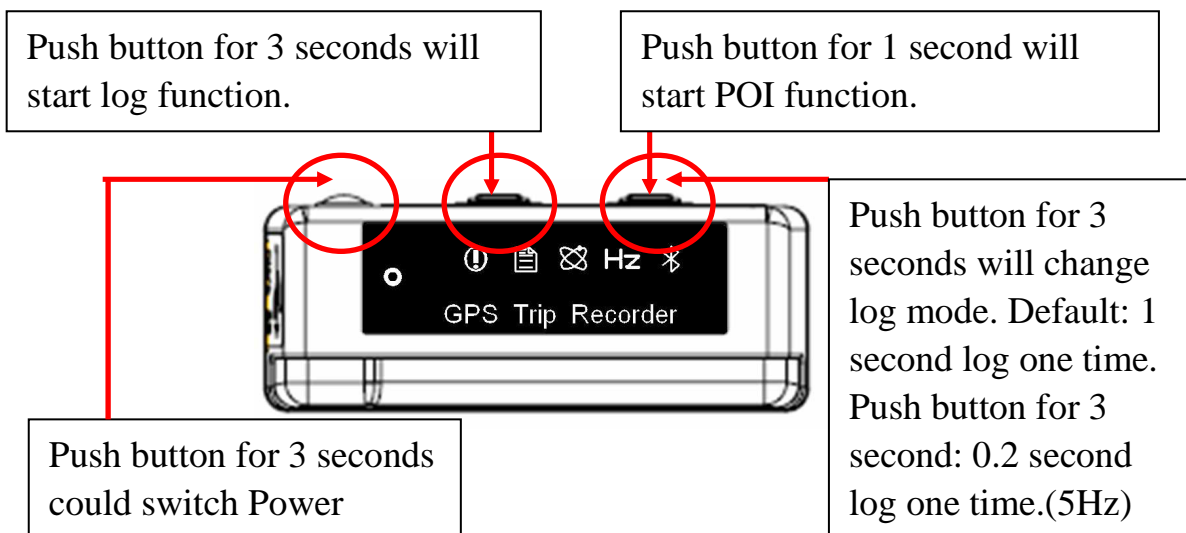
Step 1. Take out the 852 battery cover and push the two AAA batteries into TripMate852.

Step 2. Start TripMate852, push “POWER” button for 3 seconds.

POWER



2.2 Button description



2.3 Sleep mode

After TripMate852 over than 10 minutes have not connection, it will into sleep mode. Under the sleep mode, the TripMate852 is like power off. The TripMate852 include vibration sensor. Therefore, when you just touch or move the TripMate852, the 852 will automatically wake up.

2.4 Connecting your handheld device with 852

Please refer to the user manual of PDA to enable the Bluetooth connectivity.

Below, we provide a common procedure of software installation to set up your PDA. (For other PDA, the steps may be different. Bluetooth Manager is a popular program used on Bluetooth device.)



Start -> Bluetooth Manager



New

A. Open “Bluetooth Manager” on your pocket pc, and establish a new connection.



Explore A Bluetooth device

->Next

-->



Tap 852 GPS

B. Explore a Bluetooth device, and find the “852”



Passkey 0000 (if your PDA asks for the passkey)

C. (Optional)



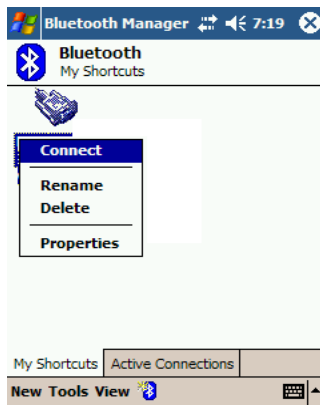
Select SPP slave->Next

-->



Finish

D. Connect to Serial Port Profile (SPP) Slave



Tap and Hold 852: SPP slave,
Connect

-->



Done

E. Finish Bluetooth Manager Setup

2.3.1. Loading your GPS mapping or routing software

You should have mapping software on your PDA/ Smart phone/ laptop or you need to install it before using the 852 for navigation.

2.3.2. Starting the application

Select the correct COM port & baud rate within the application.

Note: The Bluetooth device in most of the applications has an “auto-detect” feature so that you do not need to select the Baud Rate.

2.5 Helpful Tips

- It's better to turn off the 852 when you don't use it, or the serial Flash's life can't last long.
- Some vehicles having heavy metallic sun protecting coating on windshields may affect GPS signal receptions
- Driving in and around high buildings may affect GPS signal receptions.
- Driving in tunnels or indoor park may affect signal receptions.
- In general, any GPS receiver performs best in open space where it can see clean sky. Also weather will affect GPS reception – rain & snow contribute to worse sensitivity.
- Low battery of a PDA or of an 852 may affect signal receptions.
- Please check the correct “COM” and “Baudrate” of your PDA.
- 852 output data updates every second, therefore the actual position and the position shown in your map may have slight time delay. This may happen when you drive at higher speed or make a turn around a corner.
- Note that 852 may not work indoors where it can not see the sky.
- For the 1st time you use the 852, it will take 1 to 3 minutes to obtain the satellite constellation information and fix your position, this is called “Cold Start”. If you replace the battery, 852 will do Cold Start again.
- If your 852 can't fix your position for more than 20 minutes, we suggest you change to another spot with open space and then try again.

Chapter3. How to configure your GPS Record?

The GpsView program only supports the Microsoft Windows based platform.

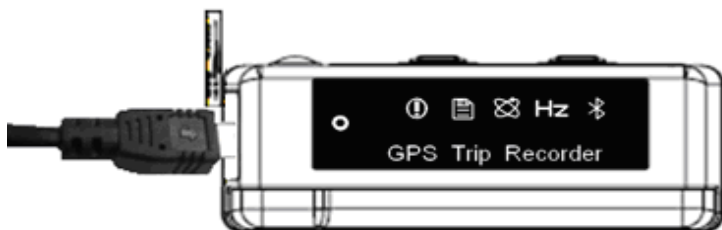
3.1 Driver Installation

Before the USB connector plugs in your PC/ Laptop, please have your USB Driver Installation ready. (Install InstallDriver.exe driver for USB port from CD-ROM.)

3.2 GpsView software

Open the GpsView software, please select correct COM port and Baud Rate (USB / Bluetooth: 115,200bps) to configure GPS.

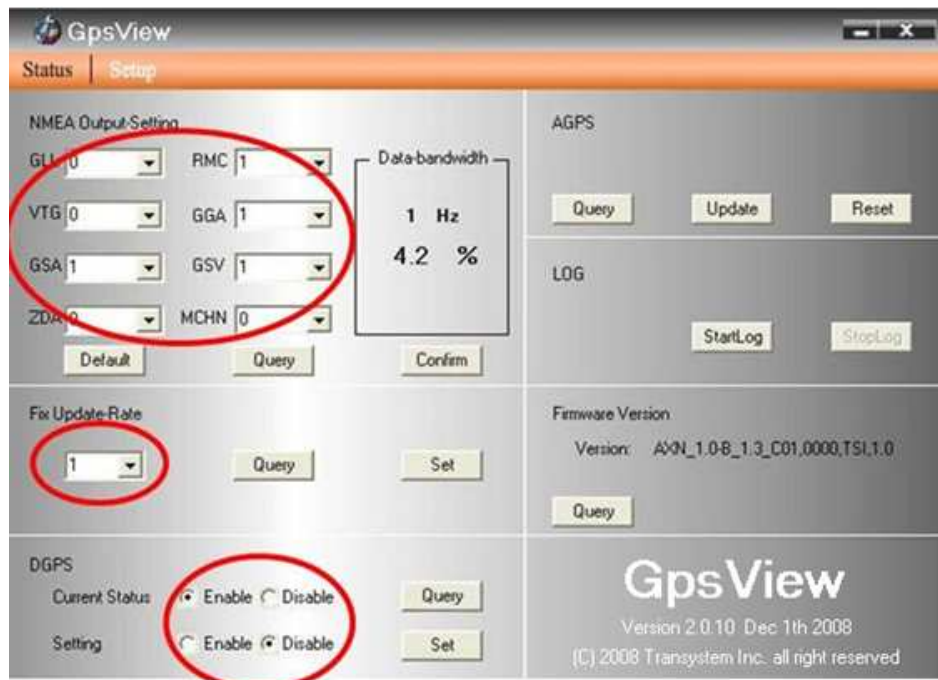
3.2.1 Connect USB cable between GPS and laptop



To USB port on PC/Laptop

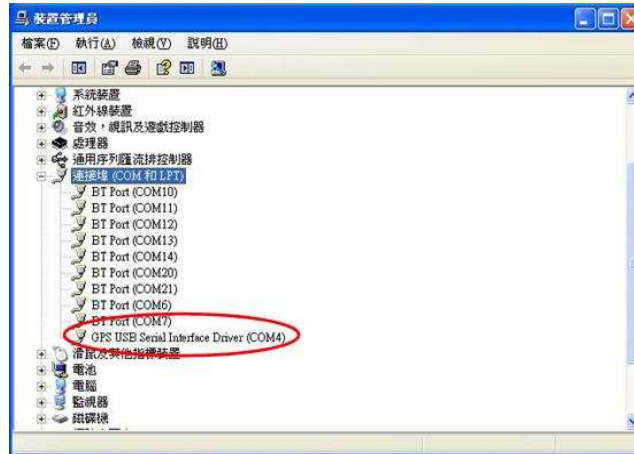
3.2.2 Executing GpsView Program

Click “Command” tap. Update Rate 1 ~ 5Hz is user configurable. And still more options for choice of NMEA output, DGPS...etc. all available through pull-down menus.

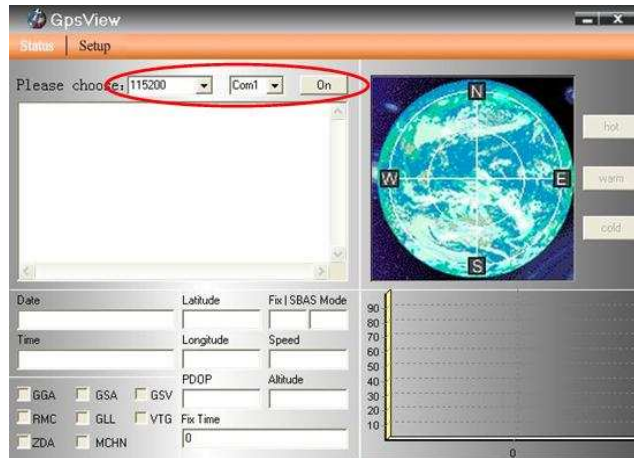


3.2.2 Download AGPS

1. Start→Control Panel→System→Hardware→Device Management→Connector (COM and LPT) Check Com port position ◦



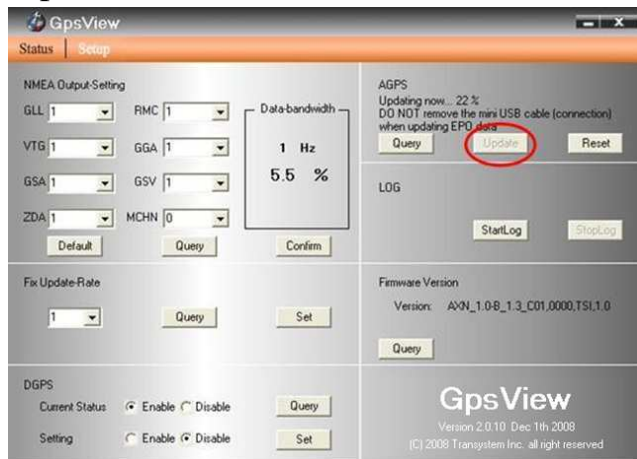
- Open GpsView.exe → Check Baud Rate and Com port → click On



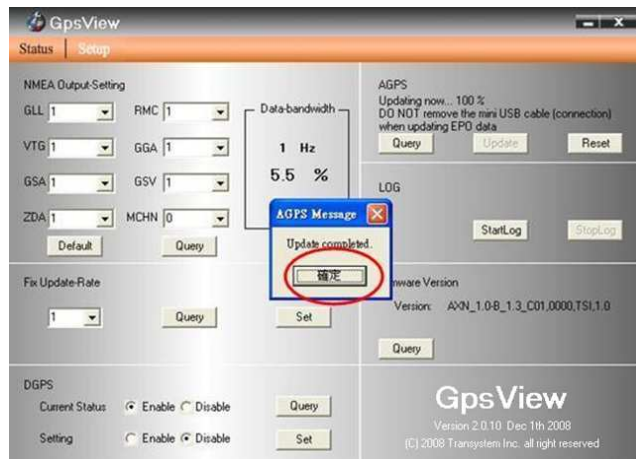
- Choice Setup



4. Choice Update ◦



5. When Updating now...100%, click Enter complete ◦



[Note] When you use GpsView software download AGPS data, it only supports use Bluetooth connect to PC and 850.

Chapter 4 Using Photo Tagger software

4.1. Execute and install software utility Photo Tagger

Complete GPS Photo Tagger and USB drivers installation (Refer to CD)

4.2. Google Earth

If your computer is not yet installed with Google Earth. Google Earth has a free download version, go download it on the internet first. For more information, please visit <http://earth.google.com/>.

4.3. Software Utility --- 852

For further function to use the Photo Tagger software in detail, please refer to Photo Tagger user manual:

Photo Tagger software > Help > User Manual

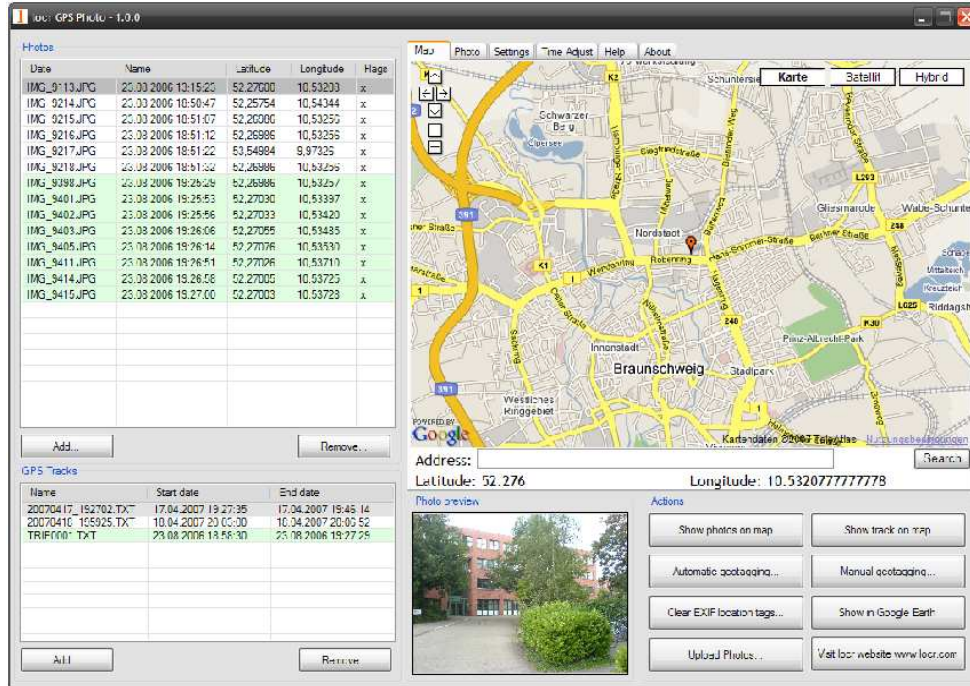
To use a mini-USB cable to connect the 852 to your PC, you have to power on the 852 unit. Please keep in mind to switch to LOG mode while using Photo Tagger software.

Appendix

Appendix A. locr GPS Photo

With 852 and locr GPS Photo software, users are allowed to import geotagging adds information to photos. The position (latitude/ longitude) then be written into the EXIF header for the further application. Also, locr GPS Photo can integrated travel log and digital photos by date/ time to show photos on the map directly.

Please find the installation file for Windows XP/ Vista in CD tool, or go to <http://www.locr.com> for further information.



Appendix B. Certification FCC Notices

This device complies with Part 15 of the FCC Rules. Operation is subject to the following two conditions: (1) this device may not cause harmful interference, and (2) this device must accept any interference received, including interference that may cause undesired operation.

CAUTION: Change or modification not expressly approved by the party responsible for compliance could void the user's authority to operate this equipment.

This equipment has been tested and found to comply with the limits for a Class B digital device, pursuant to Part 15 of the FCC Rules. These limits are designed to provide reasonable protection against harmful interference in a residential installation. This equipment generates, uses and can radiate radio frequency energy and, if not installed and used in accordance with the instructions, may cause harmful interference to radio communications. However, there is no guarantee that interference will not occur in a particular installation. If this equipment does cause harmful interference to radio or television reception, which can be determined by turning the equipment off and on, the user is encouraged to try to correct the interference by one or more of the following measures:

- Reorient or relocate the receiving antenna.
- Increase the separation between the equipment and receiver.
- Connect the equipment into an outlet on a circuit different from that to which the receiver is connected.
- Consult the dealer or an experienced radio/TV technician for help.

CAUTION:

Any changes or modifications not expressly approved by the grantee of this device could void the user's authority to operate the equipment.

RF exposure warning

This equipment must be installed and operated in accordance with provided instructions and the antenna(s) used for this transmitter must be installed to provide a separation distance of at least 20 cm from all persons and must not be co-located or operating in conjunction with any other antenna or transmitter. End-users and installers must be provide with antenna installation instructions and transmitter operating conditions for satisfying RF exposure compliance."

CE Notices

CE 0984 Ⓢ

Is herewith confirmed to comply with the requirements set out in the Council Directive on the Approximation of the Laws of the Member States relating to Electromagnetic Compatibility (89/336/EEC), Low-voltage Directive (73/23/EEC) and the Amendment Directive (93/68/EEC), the procedures given in European Council Directive 99/5/EC and 89/336/EEC.

The equipment was passed. The test was performed according to the following European standards:

- EN 300 328-2 V.1.2.1 (2001-08)
- EN 301 489-1 V.1.4.1 (2002-04) / EN 301 489-17 V.1.2.1 (2002-04)
- EN 50371: 2002
- EN 60950: 2000

Appendix C. Warranty Information

Thank you for your purchase of GPS product from the company.

The company warrants this product to be free from defects in materials and workmanship for one year from the date of purchase. The warranty for accessories is six months. The stamp of distributor or a copy of the original sales receipt is required as the proof of purchase for warranty repairs. The company will, as its sole option, repair or replace any components, which fail in normal use. Such repair or replacement will be made at no charge to the customer for parts or labor. The customer is, however, responsible for any transportation costs.

This warranty does not cover failures due to abuse, misuse, accident or unauthorized alteration of repairs. The company assumes no responsibility for special, incidental punitive or consequential damages, or loss of use.