

ROVR SIDEKICK™ Installation and Operation

This document describes how to correctly install a ROVR SIDEKICK™ device. The ROVR SIDEKICK is used with the ROVR™ vehicle tracking unit for convenience in viewing toll rates and paying for HOT lane use.

These instructions cover what you need to know to get your ROVR Sidekick up and running:

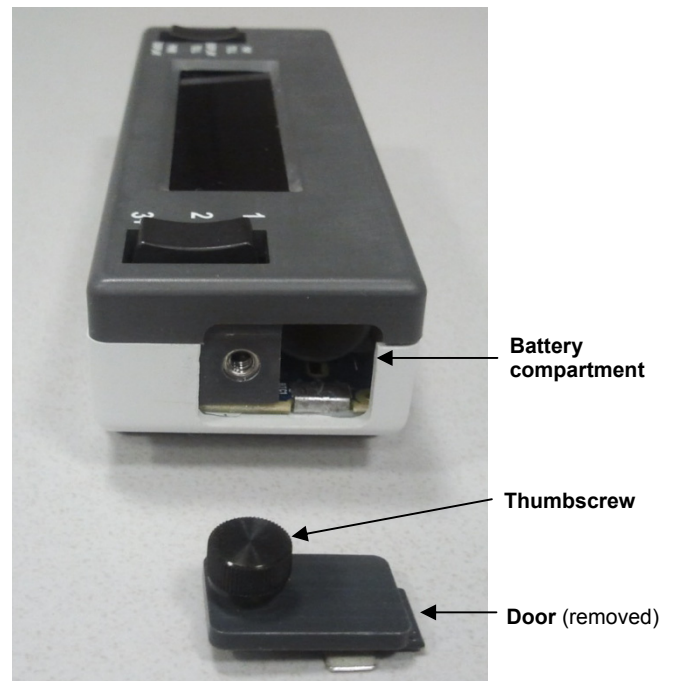
- Battery Installation
- Sidekick Unit Installation
- Operation

Battery Installation

1 The Sidekick requires 2 AAA batteries for operation. Non-rechargeable lithium batteries are recommended for maximum life. Some high capacity alkaline batteries will also be sufficient but have shorter lifetimes.

The Sidekick has a battery compartment. Batteries are inserted in-line to the compartment through a small door on the side of the unit.

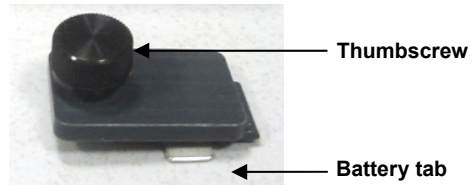
Open the door by removing the attached thumbscrew.



2 Insert both batteries negative (-) terminal first. The top of the batteries will protrude from the opening.



- 3** Manipulate the battery tab opposite the thumbscrew into the opening and screw the door back in. This requires a small amount of force to overcome the internal battery spring.



- 4** When the door is fully in place, the display should light with a message that reads ROVR SIDEKICK, along with a version number.

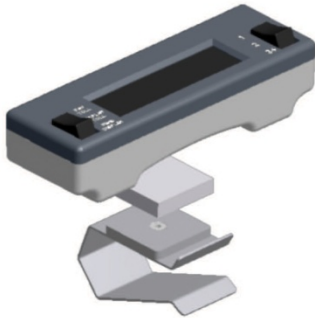


Sidekick Unit Installation

Your ROVR Sidekick kit includes the necessary parts to attach the unit to:

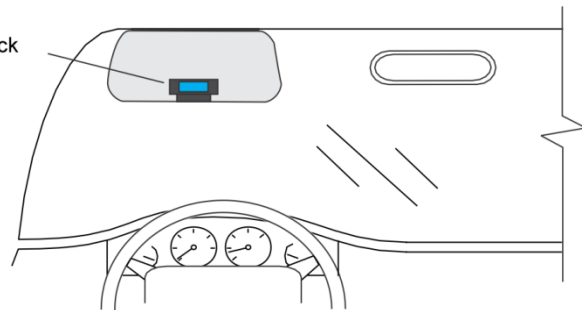
- the vehicle *visor* with a clip, or to
- the *windshield* with either double-sided adhesive or suction cups.

Clip

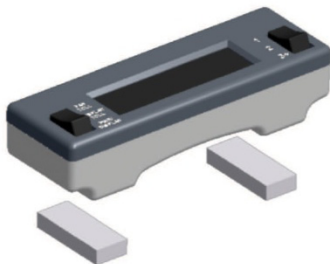


Visor Mount

Visor down,
ROVR Sidekick
clipped on

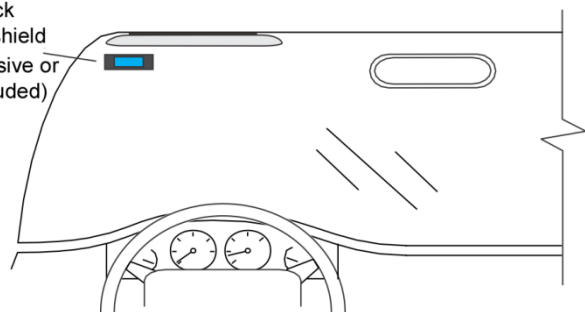


Adhesive



Windshield Mount

Visor up,
ROVR Sidekick
attached to windshield
(using either adhesive or
suction cups included)

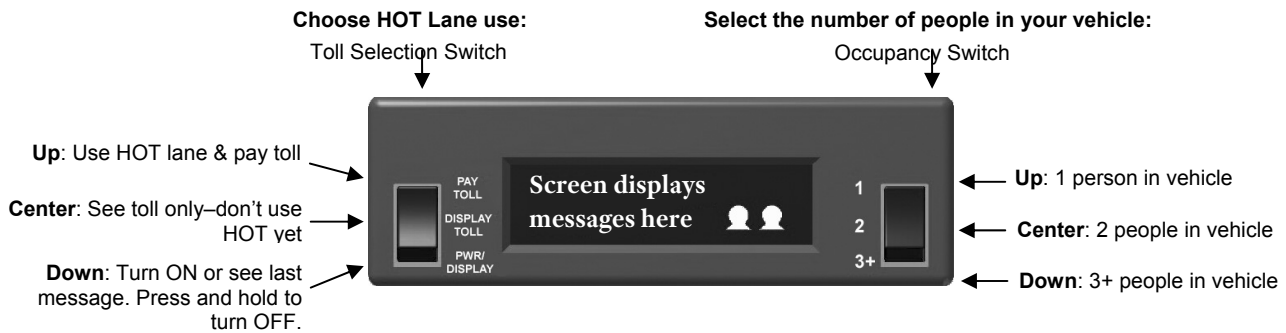


Suction Cups



Operation

The ROVR Sidekick has two “rocker” switches, one on each side, that allow you to power the unit on and off, select the number of occupants in your vehicle, and choose to use a HOT lane payment. Each switch has 3 positions: Up, Center, and Down. When you press the switch, it rocks to the position you choose and then returns to center. A display on the ROVR Sidekick shows messages.



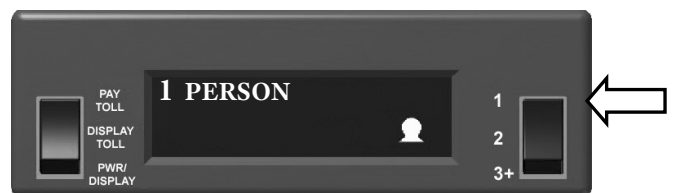
Turn On the ROVR Sidekick

Press **PWR/Display**. The ROVR Sidekick display shows this message on power-up:

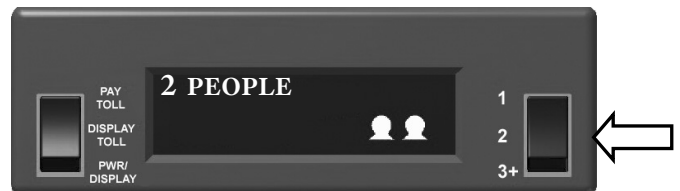


Set Number of Occupants

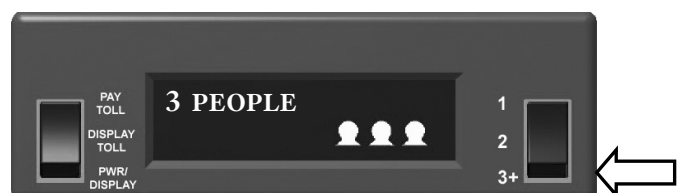
- 1 If it will be just you in the vehicle, select **1** (Up) with the Occupancy Switch.



- 2 For two passengers, select **2** (Center) with the Occupancy Switch.

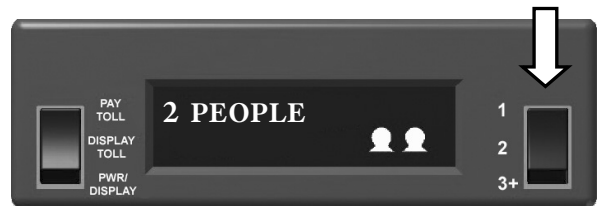


- 3 For three passengers, select **3** (Down) with the Occupancy Switch.



Use the HOT Lane

- 1 Make sure you have selected the correct number of occupants.



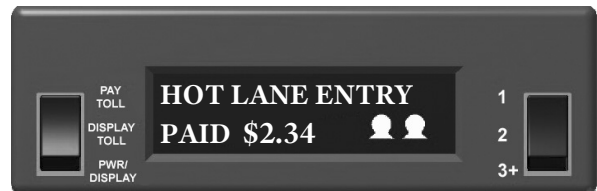
- 2 Enter Pre-Toll Geo-zone. Choose **DISPLAY TOLL** (Center) –or- press **PWR/DISPLAY** (Down). The ROVR Sidekick shows the toll amount. Continue current route towards the HOT Lane.



- 3 Press **PAY TOLL** (Up). The ROVR Sidekick confirms your choice.

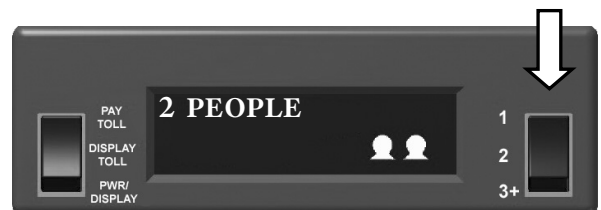


- 4 Enter Toll area. You are charged according to your occupancy setting:

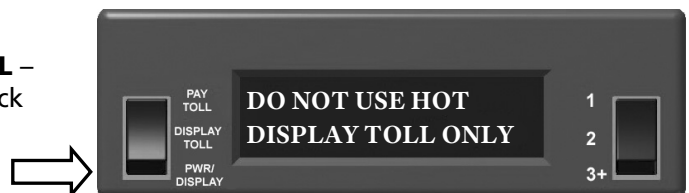


Check Toll but Skip the HOT Lane

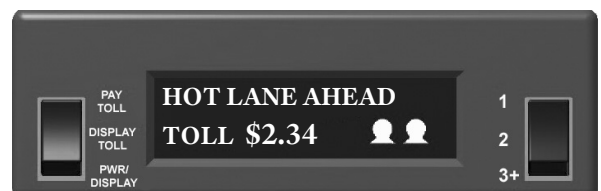
- 1 Make sure you have selected the correct number of occupants.



- 2 Enter Pre-Toll area. Choose **DISPLAY TOLL** – or- press **PWR/DISPLAY**. The ROVR Sidekick confirms the command.



- 3 The ROVR Sidekick shows the toll amount. If you decide you don't want to use the HOT lane and pay the toll, do not enter the Toll Geo-zone.





Turn Off the ROVR Sidekick

Press and hold **PWR/DISPLAY** for 2.5 seconds. This message flashes before the ROVR Sidekick powers off:



Regulatory and Compliance

This equipment has been tested and found to comply with the limits for a Class B digital device, pursuant to Part 15 of the FCC Rules, and Industry Canada license-exempt RSS standard(s). Operation is subject to the following two conditions: (1) This device may not cause harmful interference, and (2) this device must accept any interference received, including interference that may cause undesired operation.

The Sidekick™ may not be modified, altered, or changed in any way without permission from TransCore, LP. Unauthorized modification may void the equipment authorization from the FCC and will void the TransCore warranty.



www.transcore.com

©2012 TC License, Ltd. All rights reserved. TRANSCORE is a registered trademark and is used under license. ROVR is a trademark of TransCore and Cartasite. ROVR SIDEKICK is a trademark of TransCore. All other trademarks listed are the property of their respective owners. Contents subject to change. Printed in the U.S.A..