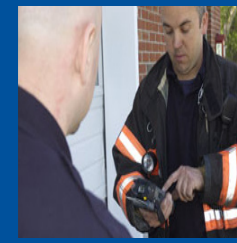


# CE3000B User Guide



CE

## Ultimate Security





## ATTENTION DAP CUSTOMERS

# Leading Rugged Mobile Computer Companies Merge To Form “Roper Mobile Technology”

**TEMPE, AZ. and QUEBEC CITY, CANADA, March 27, 2007**--JLT Mobile Computers, a leading provider of rugged, wireless mobile computers built for use in challenging environments, and DAP Technologies, LTD, manufacturer of rugged mobile computing solutions and services, have merged to form **Roper Mobile Technology** ([www.ropermobile.com](http://www.ropermobile.com)). Both Companies are subsidiaries of Roper Industries, Inc. (NYSE: ROP).

**JLT Mobile Computers'** rugged vehicle mount computers are used throughout the world in warehousing, construction, mining, law enforcement and in many other remote environments. JLT Mobile Computers' sales grew 397% percent during the four-year period since 2002 and it has garnered many national awards for its growth record, including being named to the Inc. 500 List of Fastest Growing Privately-Held Companies in America for the last three consecutive years.

**DAP Technologies**, a Canadian company, designs and manufactures and markets the DAP line of rugged mobile computing solutions and services in more than 60 countries. DAP's products help increase the productivity of data collection, processing and transmission for a wide variety of applications in industries including utilities, field service, emergency services, public safety, transportation, security and logistics.

**With this merger, Roper Mobile Technology is formed** and is poised to enter the rugged computing market with a comprehensive line of rugged computers, ranging from Vehicle Mount Terminals to PDAs. This merger is the first of many steps Roper Mobile Technology will take in establishing itself as an innovative technology leader in rugged, mobile computing.

**This merger will help the growth of our core technology-rugged, vehicle computers.** As Roper Mobile Technology, we are able to use our added resources to strengthen our presence in international markets. In addition, our customers can choose from a broader line of products and can expect an even higher level of responsive world-class service and support.

**For more information contact your local Sales or Customer Representative nearest you or visit our new Web Site at [www.RoperMobile.Com](http://www.RoperMobile.Com).**



# Table of Contents

---

ISO 9001:2000 Certification . . . . .	8
Introduction . . . . .	9
Intended Use . . . . .	9
Product Description . . . . .	9
Product Illustration . . . . .	9
Product Specifications . . . . .	10
Warning / Caution / Note Definition . . . . .	11
Symbols . . . . .	12
Quick Tour . . . . .	14
Front View . . . . .	14
Back View . . . . .	15
Getting Started . . . . .	16
Battery Warnings . . . . .	16
Main Batteries Very Low . . . . .	16
Main Battery Expired . . . . .	16
Charging the Battery . . . . .	17
Battery Status Indicator . . . . .	18
Operation Guide . . . . .	19
Turning the Unit On & Off . . . . .	19
Turn Unit On . . . . .	19
Turning the Unit Off Manually . . . . .	19
Automatic Shut-Off . . . . .	20
Touch Screen . . . . .	20
Touch Screen Calibration . . . . .	20
Using the Touch Screen . . . . .	20
Activating the Screen Backlight . . . . .	22
Using the Keyboard . . . . .	23
Special functions . . . . .	23
Alpha Mode . . . . .	24
Virtual Keyboard . . . . .	24
Transcriber . . . . .	26
Activating the Keyboard Backlight . . . . .	27
PC & SDIO Card Description . . . . .	28
PC Cards . . . . .	28
SDIO Cards . . . . .	28
Using PC & SDIO Cards . . . . .	28
Inserting PC or SDIO Cards . . . . .	29
Removing PC or SDIO Cards . . . . .	30
Using the Cradle . . . . .	31
Using the Ethernet Cradle . . . . .	31
Transferring Files in FTP Mode . . . . .	32
USB Client Connection . . . . .	33
Vehicle Cradle Connector Identification . . . . .	35

# Table of Contents

---

Using the Vehicle Cradle . . . . .	.35
Making your own Power Supply Lead . . . . .	.36
Wiring . . . . .	.36
Installing Vehicle Mount. . . . .	.36
Monitoring the Process on a 3 Serial Port Cradle . . . . .	.38
Serial Port Connector Pin-Out . . . . .	.38
Field Replaceable Battery . . . . .	.40
Changing the Field Replaceable Battery . . . . .	.40
Adaptable Endcap Options. . . . .	.42
Barcode Readers . . . . .	.43
Laser Scanner . . . . .	.43
Testing the Scanner . . . . .	.43
2D Barcode Reader. . . . .	.44
Testing the Reader . . . . .	.44
Fast Fingerprint Sensor . . . . .	.45
Testing the Fingerprint Sensor . . . . .	.45
Advanced Settings . . . . .	.49
Advanced Battery Options . . . . .	.49
To See Power Remaining . . . . .	.49
Preserving Power . . . . .	.49
Battery Power Management . . . . .	.49
Background Display and Contrast . . . . .	.50
ActiveSync Communication . . . . .	.50
Partnership with Ethernet Cradle: . . . . .	.51
Advanced User Information . . . . .	.53
Companion Programs. . . . .	.55
DAP CE3000B Programs. . . . .	.55
Microsoft Programs . . . . .	.56
Troubleshooting Guide . . . . .	.57
Storage & Maintenance . . . . .	.58
Storage . . . . .	.58
Cleaning. . . . .	.58
Shipping the Unit . . . . .	.58
Carrying Strap . . . . .	.58
Battery Maintenance . . . . .	.59
Main Battery . . . . .	.59
Backup Battery . . . . .	.59
Replacing the Battery . . . . .	.59
Touch Screen Maintenance . . . . .	.60
Adaptable EndCap With Laser Option . . . . .	.60
Quick-Reference Replacement Parts List . . . . .	.60
Recycling Passport. . . . .	.61
CE Conformity . . . . .	.62

# Table of Contents

---

FCC Statement, Copyright Policy . . . . .	.63
Microsoft End-User License Agreement. . . . .	.64
Limited Warranty . . . . .	.65
Return Merchandise Authorization for Servicing (RMA) . . . . .	.65
Extended Warranty on Roper Mobile Technology Manufactured Products . . . . .	.65
International Addresses . . . . .	.66

# ISO 9001:2000 Certification

---

DAP Technologies has documented and implemented a Quality Management System in accordance with ISO 9001:2000 International Standard (Certificate number: 95786).

This International recognition has been made possible thanks to the continual efforts put forth by DAP's personnel.

In order to ensure continuous improvements to our products and services, we invite you to communicate your comments to our Customer Service Department by dialing:

**Canada:** 1 (418) 681-7833 or 1 (800) 363-1993

**United States:** 1(800) 363-1993

**Europe:** + (800) 8899 1000

or

[Sales@RoperMobile.com](mailto:Sales@RoperMobile.com)

[www.RoperMobile.com](http://www.RoperMobile.com)



# Introduction

---

## INTENDED USE

This User Guide is intended to assist in the operation of the CE3000B series and applies to the CE3240B, running Windows CE.NET 5.0 Operating System, Release Pack K or later and manufactured after June 1st, 2007. Should any information in this Guide be incorrect, please report your comments to your local Customer Service Representative nearest you so that this document can be made as accurate as possible.

## PRODUCT DESCRIPTION

The CE3000B Series is built for use in all environments. It will survive being dropped, being subject to vibration, being used in below freezing conditions or desert heat, making it the ideal work tool for industry type applications within many market segments.

## PRODUCT ILLUSTRATION



[Return To Table of Contents](#)

# Introduction

## PRODUCT SPECIFICATIONS

<b>BASE UNIT</b>	<b>OPERATING SYSTEM &amp; PROCESSOR</b> <ul style="list-style-type: none"> <li>Windows CE 5.0</li> <li>Intel XScale Bulverde - PXA270, 520 MHz</li> </ul> <b>MEMORY</b> <ul style="list-style-type: none"> <li>128 MB Storage Flash for Win CE &amp; File system (approx. 64MB available to the user)</li> <li>128 MB SRAM (Approx. 64 MB used for OS)</li> <li>Optional: Additional storage via PCMCIA/CF Flash Cards and USB connected Memory devices and SD Memory Flash Cards.</li> </ul> <b>Voice System</b> <ul style="list-style-type: none"> <li>Integrated and environmentally sealed speaker</li> <li>Recording and play back fully supported by Windows CE operating system</li> <li>Optional: Integrated and environmentally sealed microphone and headset connector</li> </ul>	<b>DISPLAY</b> <ul style="list-style-type: none"> <li>3.5 inch diagonal (89 mm) QVGA TFT transreflective color LCD with LED backlighting</li> <li>Indoor and outdoor display</li> <li>Scratch and shock resistant touch screen that can be used either with Stylus or finger</li> </ul> <b>KEYBOARD</b> <ul style="list-style-type: none"> <li>Highly ergonomic keyboard, 22-key keypad with 10 numeric and function keys plus 2 trigger keys</li> <li>Programmable auto-repeat</li> <li>Keyboard backlighting</li> <li>Customized keyboard template</li> <li>Ergonomic key grouping to speed up data entry</li> <li>Tactile and programmable audible feedback</li> </ul>
<b>CONNECTIVITY</b>	<b>CE3240W WIRELESS EDITION</b> <ul style="list-style-type: none"> <li>Internal Bluetooth Class 2</li> <li>Internal 802.11 b/g</li> </ul>	<b>CE3240B ETHERNET EDITION</b> <ul style="list-style-type: none"> <li>Ethernet 10BaseT, 10Mbps through the cradle</li> </ul>
<b>POWER</b>	<ul style="list-style-type: none"> <li>Rechargeable 2000mAh Lithium-Ion battery pack (user accessible)</li> <li>Battery life: Typically 2 to 4 working days</li> <li>Integrated charge status and low battery indicator</li> <li>Intelligent fast charge</li> </ul>	<ul style="list-style-type: none"> <li>Rechargeable backup battery</li> <li>Backup system for RAM memory if main battery is exhausted or removed</li> <li>ON/OFF switch, manual or automatic shutoff</li> <li>5 Volt power for external devices</li> </ul>
<b>ADAPTABLE END-CAPS</b>	<ul style="list-style-type: none"> <li>Smart Card Reader: Contact/Contactless</li> <li>High resolution fingerprint sensor</li> </ul>	<ul style="list-style-type: none"> <li>1D/2D Barcode reader (CMOS imager)</li> <li>1D Barcode scanner</li> </ul>
<b>PC CARD &amp; SDIO</b>	<ul style="list-style-type: none"> <li>1 PC Card Type II (CF Card via adapter)</li> <li>1 Secure Digital (SD or SDIO) slot</li> </ul>	<ul style="list-style-type: none"> <li>CF Card support via adapter</li> <li>User accessible via an environmentally sealed expansion bay</li> </ul>
<b>COMMUNICATION I/O</b>	<ul style="list-style-type: none"> <li>Ethernet 10BaseT, 10Mbps plus USB host and client through cradles</li> </ul>	<ul style="list-style-type: none"> <li>Internal, user accessible and environmentally sealed</li> <li>Ideal for OEM Integration</li> </ul>
<b>BUNDLED/ AVAILABLE SOFTWARE</b>	<ul style="list-style-type: none"> <li>Microsoft ActiveSync</li> <li>FTP Client/Server</li> <li>CE Internet Explorer and Viewers for Word®, Excel®, PowerPoint® &amp; PDF files</li> <li>Microsoft Outlook®</li> <li>Microsoft Window Media Player®</li> <li>Terminal Services Client</li> <li>Image &amp; Video Viewer</li> </ul>	<ul style="list-style-type: none"> <li>Voice Recorder</li> <li>Handwriting recognition</li> <li>DAPDUB system allowing: Backup/Restore utilities, cloning, OS update utility, automated file transfer &amp; auto recovery system</li> <li>CE Pad (Notepad)</li> <li>Playback/Recording program</li> </ul>
<b>PERIPHERALS &amp; ACCESSORIES</b>	<ul style="list-style-type: none"> <li>Various communication and charging cradles (office or vehicle)</li> </ul>	
<b>SIZE &amp; HEIGHT</b>	<ul style="list-style-type: none"> <li>5.2 cm (2.05 in) x 7.9 cm (3.1 in) x 19.6 cm (7.7 in)</li> </ul>	1 lb (454 g) with battery
<b>ELECTRICAL &amp; ENVIRONMENTAL REQUIREMENTS</b>	<b>TEMPERATURE</b> <ul style="list-style-type: none"> <li>Operating: -20°C (-4°F) to +50°C (+122°F)</li> <li>Storage: -30°C (-22°F) to + 60°C (+140°F)</li> <li>Display refresh cycle may decrease</li> </ul>	<b>Immersion, Rain &amp; Humidity:</b> <ul style="list-style-type: none"> <li>Meets MIL-STD-810F method 512.3 procedure 1 &amp; IP65</li> <li>Meets MIL-STD-810F method 506.3 procedure 1 (wind blown rain)</li> <li>Humidity: 95% non-condensing</li> </ul>

[Return To Table of Contents](#)

# Introduction

---

## PRODUCT SPECIFICATIONS (CONTINUED)

<b>ELECTRICAL &amp; ENVIRONMENTAL REQUIREMENTS (Continued)</b>	<b>Free Fall Drop Resistance (*):</b> <ul style="list-style-type: none"><li>Meets and exceeds IEC 68-2-32 method 1 (2 meter drop on concrete)</li><li>Meets and exceeds MIL-STD-810F method 516.4 procedure IV&lt;</li></ul>	<b>Electrostatic Discharge:</b> <ul style="list-style-type: none"><li>Meets EN 61000-4-2</li></ul>
<b>Approvals</b>	<ul style="list-style-type: none"><li>CE Certification</li></ul>	<ul style="list-style-type: none"><li>FCC Class B</li></ul>
<b>Warranty</b>	Manufacturer's warranty: 1 year parts & labor	Optional DAPCare Warranty extension available

**Roper Mobile Technology reserves the right to change specifications without notice.**

### WARNING / CAUTION / NOTE DEFINITION

The words WARNING, CAUTION, and NOTE carry special meanings and should be carefully reviewed.

---

#### **WARNING**

Alerts the reader about a situation, which if not avoided, could affect the proper functioning of the unit and result in permanent damage to the unit.

---

#### **CAUTION**

Alerts the reader of a potentially hazardous situation, which if not avoided, may result in minor injury to the user or may cause damage to the equipment. This includes special care necessary for the safe and effective use of the device and the care necessary to avoid any damage that may occur as a result of use or misuse.

#### **Note:**

This provides special information to make important instructions clearer.

[Return To Table of Contents](#)

# Symbols

---



Warning, pay special attention.



In accordance with European Directive 2002/96/EC on Waste Electrical and Electronic Equipment (WEEE), this symbol indicates that the product must not be disposed of as unsorted municipal waste, but should be collected separately. Refer to your local distributor for return and/or collection systems available in your country.



Caution must be used when this symbol is present. This symbol indicates a danger for laser radiation.

# Safety Precautions

---

## WARNING

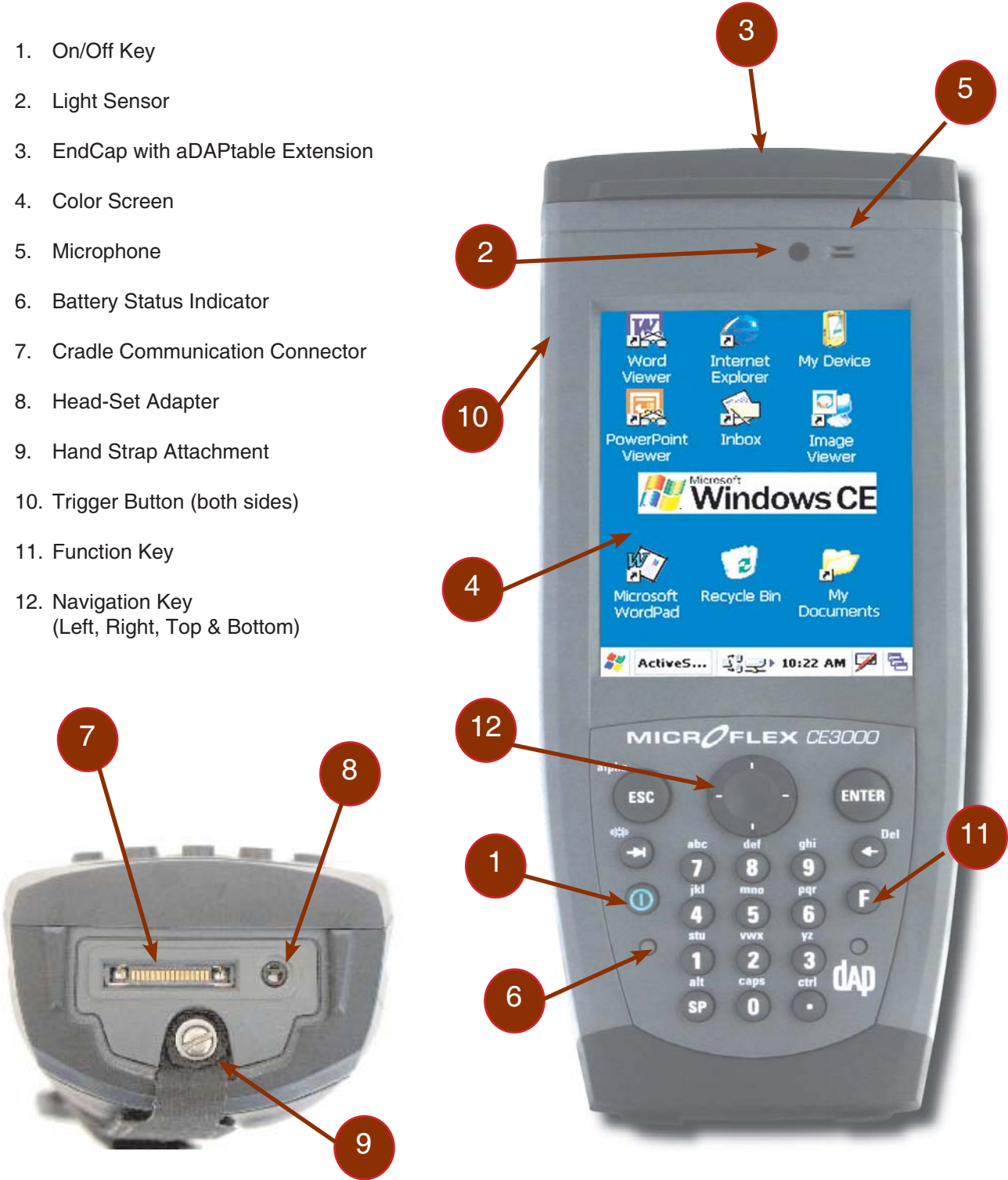
---

- Refer to this Guide when inserting or removing batteries, cables or external peripherals.
- Operate and store your DAP unit within the temperature limits specified in this Guide.
- Do not use any pointed objects on the keyboard, door or mechanisms. Doing so may damage the unit.
- Use the 'Stylus' which has been provided with the unit by Roper Mobile Technology, as it has been designed with a non-abrasive material that cannot scratch or damage the touch screen.
- Never expose the battery to extreme heat or dispose of by burning.
- Any attempts to open the case of a CE3240B unit will void the warranty.
- If you need to use a cable other than the ones provided or recommended by Roper Mobile we recommend that you contact your Customer Service Representative nearest you.

# Quick Tour

## FRONT VIEW

- 1. On/Off Key
- 2. Light Sensor
- 3. EndCap with aDAPtable Extension
- 4. Color Screen
- 5. Microphone
- 6. Battery Status Indicator
- 7. Cradle Communication Connector
- 8. Head-Set Adapter
- 9. Hand Strap Attachment
- 10. Trigger Button (both sides)
- 11. Function Key
- 12. Navigation Key (Left, Right, Top & Bottom)



# Quick Tour

## BACK VIEW

1. Release screws for PC & SDIO Card Access Door
2. Stylus (Pen) holder
3. Trigger Buttons (Left & Right)
4. Speaker
5. Release screws to change field replaceable battery (2 screws left and right).



[Return To Table of Contents](#)

# Getting Started

## WARNING

Upon receiving your CE3000B unit, it is strongly recommended that you first charge the batteries prior to use. These following messages are likely to appear due to the length of time the unit was stored. When the battery reaches the low level, the battery status indicator will flash red. The Main Battery field will be highlighted as “Low” under the Battery or Status Tab. It will remain highlighted as long as the battery level is between 6% and 16%.

### BATTERY WARNINGS

#### Main Batteries Very Low

Following several hours of use or storage, the main battery will become very low and this **warning** will appear when there is still some power remaining.

At 5% the battery status indicator continues to flash and a window will display to indicate to the user that the battery is at a critical level and must be re-charged. This warning shall be displayed approximately every 4 minutes for as long as the battery is below 5 %

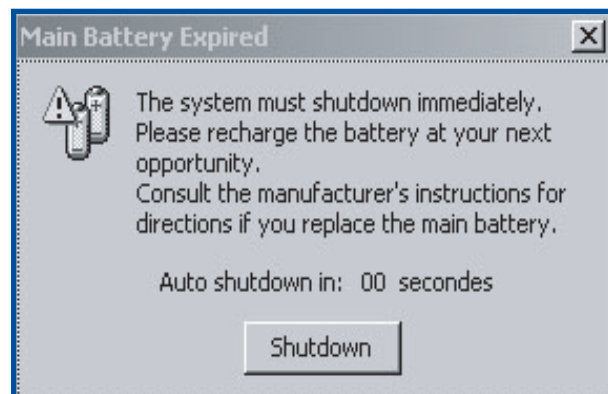
**It is strongly recommended that the batteries be re-charged immediately to avoid loss of data.**

**Note:** The level at which this warning is to appear can be configured according to preference. Refer to “**Battery Power Management**” for further instructions.

#### Main Battery Expired

This warning will appear when the power is too low.

Turn the unit off immediately and recharge the batteries.



## WARNING

Data may be lost if the unit is not re-charged immediately.

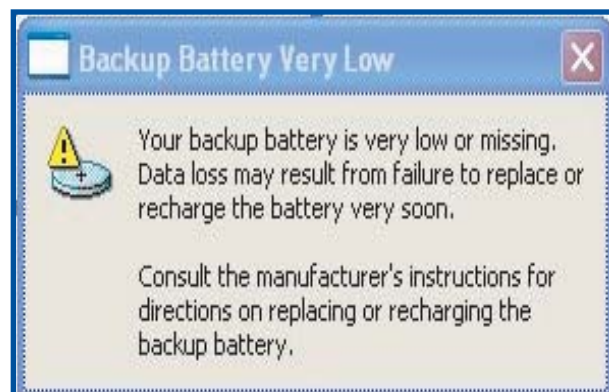
#### Backup Battery Low

The backup battery will save programs and files in the memory for days. The backup battery is used when replacing the main battery or when the main battery has expired. The backup battery will be re-charged every time the main batteries are charged.

**Note: The life of the backup battery will depend on:**

- The residual power of the main battery.
- The amount of memory installed in the unit.

[Return To Table of Contents](#)





# Getting Started

---

## CHARGING THE BATTERY

1. The installation requires the Modular Charger CSCE300-NA (North America - 110V / 120V AC Adapter) or the CSCE300-EU (Europe 220V) or the CSCE300-UK (United Kingdom 220 V).



CSCE300-NA,  
CSCE300-EU,  
CECE300-UK

2. Insert modular charger into round connector (a) at the back of the cradle.
3. Connect the Modular Charger to the wall outlet.



4. Insert unit into cradle.

### Note:

- The CE3240B Battery Status indicator will turn red in the next 5 seconds indicating that charging is now in progress. The light will turn green when charging is complete. Charging may take up to 3 hours.
- If the unit was turned off, it should turn back on after a few seconds or after 2 to 3 minutes if the main battery charge has been very low for some time. Processing will resume exactly where it was interrupted once re-charging starts.



[Return To Table of Contents](#)

# Getting Started

---

## BATTERY STATUS INDICATOR

Color	Definition
Red	Charger is connected and charging.
Green	Battery is fully charged.
Blinking Red	Warning, low battery
Yellow	Charger detected, but the battery charger temperature is too high or too low to re-charge. Charge will start when temperature is adequate.
No Light	Power from the charger is not detected.



# Operation Guide

## TURNING THE UNIT ON & OFF

Once charging is complete, the unit will automatically turn itself off after approximately 3 minutes.

### Turn Unit On

1. To turn on the CE3240B Unit, press the **ON / OFF** key for 2 seconds and release.



**Note:** Should the unit not turn on, it could be because the battery is too low. Refer back to “**Charging the Battery**” Section for further instructions.



### Turning the Unit Off Manually

There are two ways to turn the unit off:

1. Press on the Start button located at the bottom left corner of the screen and then select “Suspend”



or

2. To manually turn off the CE3240B unit, press the Function Key followed by the ON / OFF Key.



[Return To Table of Contents](#)

# Operation Guide

---

## TURNING THE UNIT ON & OFF (CONTINUED)

### Automatic Shut-Off

If the Unit remains inactive for more than 3 minutes, it will turn off automatically in order to save battery. The unit will also save the exact status of your application program and data before shutting down. Simply restart the unit when ready to resume work.

**Note:** When turned off with fully charged batteries, the unit can be stored up to several days without re-charging. Refer to 'Storage and Maintenance' Section for further instructions.

## TOUCH SCREEN

### Touch Screen Calibration

The Touch Screen may need to be calibrated upon receiving a new unit or after being stored for a long period of time.

1. Hold your Stylus down until the Cross begins to move.
2. Touch the center of the Cross for a few seconds. Repeat operation as Cross moves to another location.

**Note:**

Calibration may also be started by following the steps below:

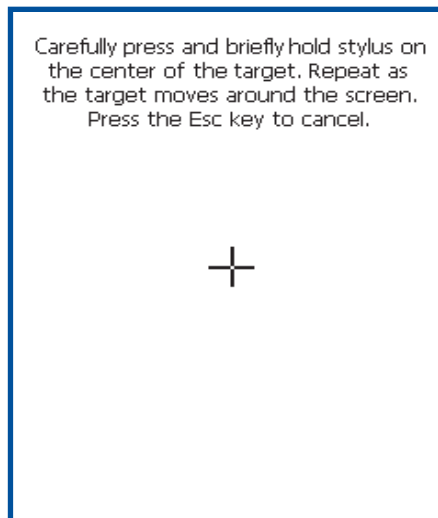
**Click on:**

- a) Start
- b) Settings
- c) Control Panel

3. Select Stylus applet
4. Select Calibration tab and click on Recalibrate.

### Using the Touch Screen

1. To use the touch screen, simply use the Stylus provided with the Unit.



---

**⚠ WARNING**

Apply normal pressure when using the Touch Screen. Excessive pressure may permanently damage the screen and hinder performance.

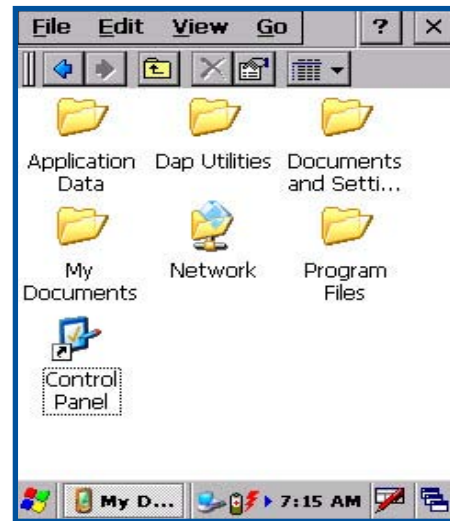
[Return To Table of Contents](#)

# Operation Guide

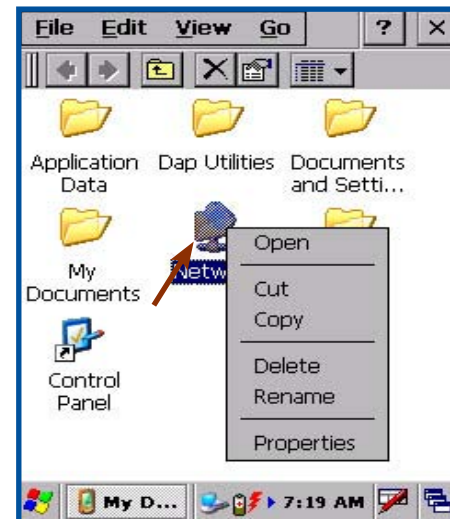
## TOUCH SCREEN (CONTINUED)

### Using the Touch Screen (Continued)

1. By using the Stylus provided, move files or folders by “dragging and dropping” into the folder of your choice.
2. To open a folder, double click with Stylus on the desired folder.
3. To run a program, double click with Stylus on the desired program.



4. Point to a folder (pressing Stylus on Touch Screen) and wait a few seconds, a contextual menu will appear.



5. To navigate, with Stylus scroll up or down the navigation bar.



[Return To Table of Contents](#)

# Operation Guide

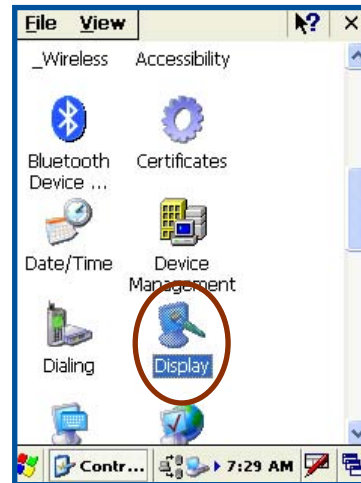
## Activating the Screen Backlight

Every unit has been designed to work in low-light environments and have been equipped with a “Backlight” that can be activated at any time.

1. To adjust the backlight, Click on:

- a) Start
- b) Settings
- c) Control Panel

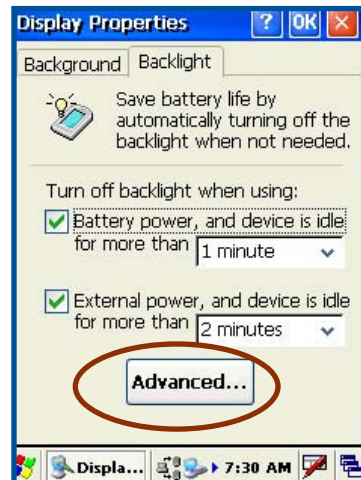
2. Select the “**Display**” applet.



3. Select “**Backlight**” tab.

*Adjust time backlight is to turn off.*

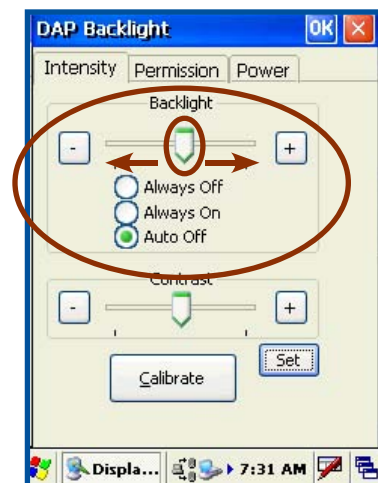
4. Select the “**Advanced**” tab for more options



5. **Check options:**

- a) **Always Off:** Will remain off at all times.
- b) **Always On:** Will remain on at all times.
- c) **Auto Off:** Will automatically adjust to surrounding light, turning on and off when required.

6. To adjust backlight manually, slide arrow to the left or to the right.














# Operation Guide

## USING THE KEYBOARD

### Special functions

To obtain special functions, press the F key (Function Key) followed by another key. Refer to the table below for specific functions available with your CE3000B unit.

**Note:** when the F1 Key is pressed, an “F” icon will appear on the task bar and disappear once the second key has been pressed.

Special Function	Instruction
Keyboard Backlight ON/OFF	Press the F key followed by the TAB key  + 
Delete Key (DEL)	Press the F Key followed by the “Backspace” key  + 
Alternate Key (ALT)	Press the F key followed by the “SP” key  + 
Control Key (CTRL)	Press the F key followed by the “Period” key  + 
F1 to F9	Press the F key followed by a number from 0 to 9  + 
Navigation arrows	Press cursor pad in desired direction (Left, right, up or down) 

[Return To Table of Contents](#)

# Operation Guide

## USING THE KEYBOARD (CONTINUED)

### Alpha Mode

Special Function	Instruction
Engage / disengage Alpha Mode	Press the F key followed by the escape key. The ABC icon will appear / disappear on the task bar.
Enter an Alpha Character	Press the corresponding key. Depending on the letter, you may need to press once, twice or three times in order to obtain the desired letter.  e.g:                   press once for “ a “ press twice for “ b “ press three times for a “ c ”
Engage / Disengage Uppercase Mode	Press the F key followed by the the 0 key  +

### Virtual Keyboard

The virtual keyboard has been included to assist in the entry of data. By clicking the Keyboard icon at the bottom right of the Task Bar, the virtual keyboard will be displayed on the screen.



- Select “Hide Input Panel” to hide the Virtual Keyboard.

[Return To Table of Contents](#)




# Operation Guide

## USING THE KEYBOARD (CONTINUED)

### Virtual Keyboard (Continued)

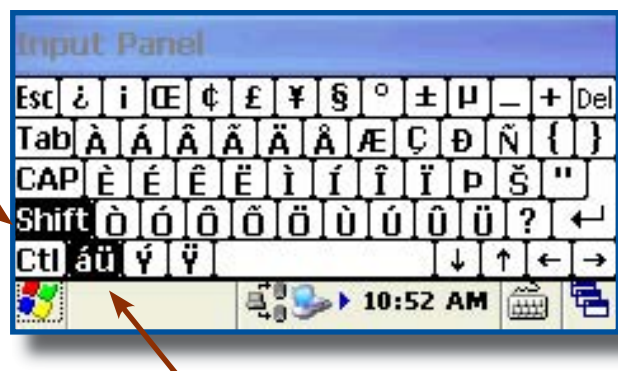
1. Standard Keyboard



2. Press  to toggle between the standard and extended language Keyboard.



3. Press the **Shift** Key on the virtual Keyboard to access additional characters.



[Return To Table of Contents](#)

# Operation Guide

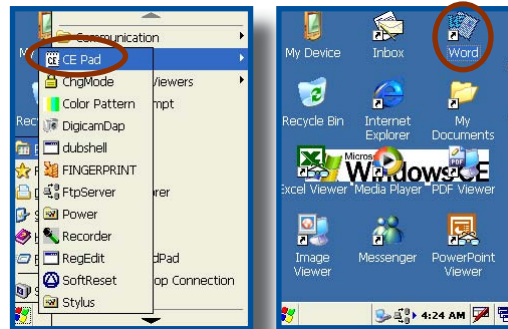
## USING THE KEYBOARD (CONTINUED)

### Transcriber

Transcriber is an award winning application that is used for handwriting recognition. Whether the handwriting is cursive or printed, or a combination of both, Transcriber is able to recognize both. In addition to recognizing letter, numbers and words, Transcriber can also recognize special characters and most common symbols and even various control gestures.



1. Start an application such as Pocket Word or CE Pad.
2. Double click on the **Word** Icon on your Desktop or go to:
  - a) My Device
  - b) DAP Utilities
  - c) **CE Pad**



3. Click on the **input method menu icon** in the lower right corner of the window (depending on what you already had selected on your CE3000B unit, one of these two icons will be visible).



4. Select **Transcriber** from the menu.
5. Activate or deactivate Transcriber by clicking on Transcriber in the menu.
6. Position the cursor where you want text to appear.
7. Using the Stylus, write directly onto the screen. Once text is written, Transcriber will wait a few moments for the **Recognition Delay**, then displays the text in the selected location.



[Return To Table of Contents](#)

# Operation Guide

## USING THE KEYBOARD (CONTINUED)

### Transcriber (Continued)

**Note:** To know more about Transcriber as well as possible options, click on the Help Icon located on the Input Panel Display.



### Activating the Keyboard Backlight

1. Press the "F" key followed by the "Tab" key, pressing one after the other.



**Note:** Keyboard backlight drains the batteries more quickly, it is recommended that backlight be used only when necessary.

# Operation Guide

---

## PC & SDIO CARD DESCRIPTION

### PC Cards

PC cards are available in 3 basic formats: Type I, Type II & Type III. The type refers to the thickness of the card; type III being the thickest. The width is the same for all cards, however the length will depend on the particular function of the card. (Memory cards are the shortest while wireless and GPS cards are much longer).

**Note:** The standard length of a PC card is 85.7 mm ( $\approx 3 \frac{1}{8}$  in). The maximum length a CE3000B unit can accommodate is 120 mm ( $\approx 4 \frac{1}{2}$  in). The extended length is usually used for GPS, RF Tag Readers and wireless cards.

**Note:** CF cards (Compact Flash Cards) are between the SDIO and PC Cards in terms of size and can generally be installed in the CE3000B unit as a PC card, **however, it requires the use of an Adapter.**

### SDIO Cards

These cards are available in a smaller format. Length will depend on the complexity of the card, e.g., a memory card is much shorter than a wireless card.

SDIO Cards will come in 3 different lengths:

- Short: 32 mm (standard cards such as memory cards)
- Medium: 40 mm (such as Bluetooth cards)
- Long: 54 mm (such as WIFI AND WLAN Cards)

**Note:** The CE3000B unit does not accept CardBus 32 bit PC Cards or extended PCM CIA Cards (which all use the same technology). To ensure your unit may accept certain cards not described within this user guide, it is recommended you refer to our Technical Support Web Site for the most current information, or contact your Technical Support Representative nearest you.

## USING PC & SDIO CARDS

One PC Card slot and one SDIO card slot are located at the top of the Endcap or the Adaptable Endcap. Follow the instructions to insert, remove or to replace a card.

---

### **WARNING**

- To ensure no dirt particles or water enters the unit when inserting, removing or replacing PC or SDIO cards, it is important to do so in a clean and dry area.
- Some Adaptable Endcaps may make the installation of these cards more complex. You may require the assistance of a skilled technician or assistance from customer technical support.
- PC & SDIO CARDS can reduce battery life significantly, especially the WLAN and Bluetooth cards.
- Most PC & SDIO cards that are not memory cards, will require the installation of a driver for proper functioning. Refer to your technical support team or Roper Mobile Technical Support Team for further information.

# Operation Guide

## USING PC & SDIO CARDS (CONTINUED)

### Inserting PC or SDIO Cards

1. Turn the unit off.
2. Using a Flathead screwdriver, loosen the 2 screws located at the top of your unit on Endcap.
3. Remove the Endcap slowly and place to the side.

**Note:** The screws will remain inside the Endcap.

#### **WARNING**

- The Adaptable Endcap with GPS option has a short communication cable between Endcap and unit. Keep Endcap close to unit not to break or disconnect the cable.

**Note:** You do not need to disconnect the GPS cable to insert the PC or SDIO cards.

4. Slide card into the appropriate socket. (PC or SDIO).

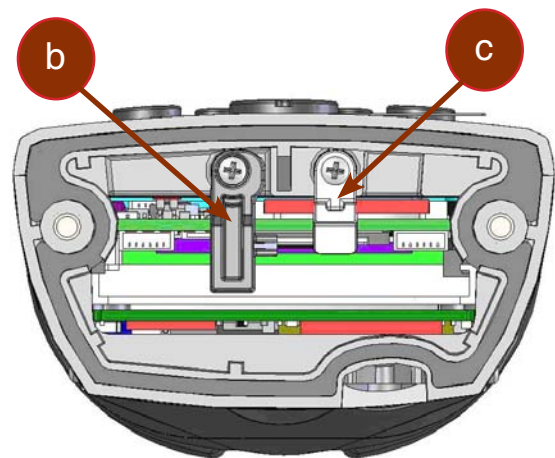
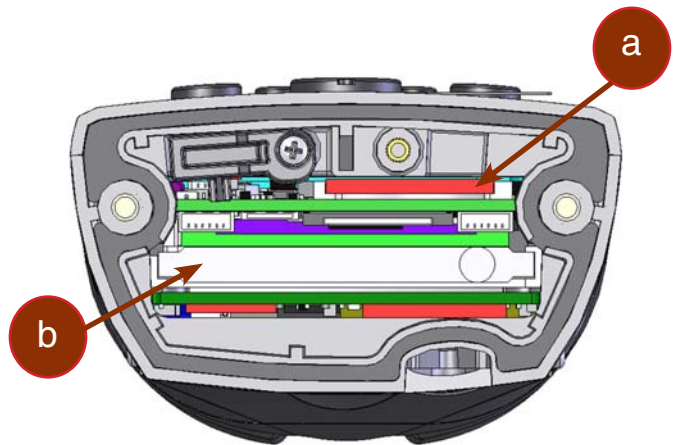
- a) SDIO Slot
- b) PC Slot

5. Turn stopper to secure cards into place.

- c) SDIO Stopper
- d) PC Stopper

**Note:** The extended Endcap also comes with two (2) foams to secure PC or SDIO cards into place when stoppers cannot be used.

6. Replace the door to its original position and tighten screws.



[Return To Table of Contents](#)

# Operation Guide

## USING PC & SDIO CARDS (CONTINUED)

### WARNING

1. Installing PC cards is **not** recommended when Adaptable Endcap is installed.
2. Insert PC or SDIO Cards in a clean and dry environment to ensure no dust particles or water enters the unit.
3. Ensure to insert PC or SDIO Cards appropriately or you may damage the unit.
  - a) **PC Cards:** Insert the end with the two (2) rows of little holes first and manufacturer label facing upwards.
  - b) **SDIO Cards:** Insert the end with the row of copper fingers first and manufacturer label facing upwards.



### Removing PC or SDIO Cards

1. Turn the unit off.
2. Using a Flathead screwdriver, loosen the 2 screws located at the top of your unit on Endcap.
3. Remove the Endcap slowly and place to the side.

**Note:** The screws will remain inside the Endcap.

  - a) To remove the **PC Card** from the unit, press the **'release button'** located to the right of the PC Card opening.
  - b) To remove the **SDIO Card**, push gently once and card will pop up. Remove card.
4. Replace the door to its original position and tighten screws.



# Operation Guide

## USING THE CRADLE

**Note:** For instructions regarding the installation and configuration of the cradles available for your CE3000B unit, refer to the Technical Guide available on the Roper Mobile Technical Support web site. Refer to ‘Advanced User Information’ for instructions on logging onto the Customer Service Web Site.

The Technical Guide will provide information on the following Cradles:

Office Cradle	
Cradle Code	Description
CBCE340BE	Charge & Communication: USB Host; USB Client and Ethernet
Vehicle Cradles	
Cradle Code	Description
CBCE340BV	Charge and Communication: USB Host; USB Client and 3 Serial Ports (RS232)

### Using the Ethernet Cradle

1. To activate the Ethernet Cradle, you must first connect a CSCE300 charger to the cradle.
2. Connect the RJ-45 network cable to the cradle.



3. Slide the unit into the cradle.
4. Connect power cable to the wall outlet.



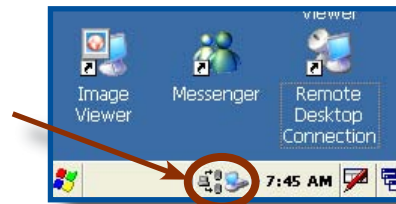
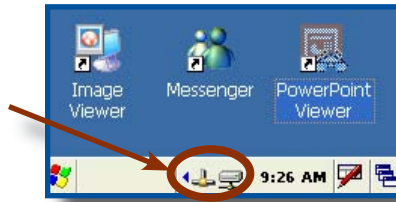
[Return To Table of Contents](#)

# Operation Guide

## USING THE CRADLE (CONTINUED)

### Using the Ethernet Cradle (Continued)

1. Ethernet Adapter is activated and linked to the Network. It is ready to be used by a User or Windows Application.
2. This blinking icon indicates that a connection is established with the network and data is being transferred.
3. The following icons indicate that the FTP Server is running. By default, server starts automatically when a network connection is established.



## TRANSFERRING FILES IN FTP MODE

The CE3000B unit includes an FTP Client access which makes transferring files easy and does not require the use of ActivSync.

1. Insert the CE3000B unit into the Office Cradle.  
**Note:** Once unit is inserted this will automatically activate the FTP server. If the FTP server does not activate automatically, follow the steps below.

Click on:

- a) Start
- b) Program
- c) DAP Utilities
- d) FTP Server





# Operation Guide

## Transferring Files in FTP Mode (Continued)

3. Open Internet Explorer on your Desktop Computer then type:

**FTP:// <your CE3000B IP address>**

**e.g.: FTP://192.168.2.34**



4. The contents of your CE3000B unit will appear. Simply use the conventional 'Drag and Drop / Copy / Delete' functions to manage its contents.

## USB CLIENT CONNECTION

1. To activate the USB Connection, you must first connect a CSCE300 Charger to the cradle.
2. Connect USB cable to the CE3000B Unit and to the Host connector on your desktop computer.



3. Slide unit into the cradle.
4. Connect power cable to wall outlet.



[Return To Table of Contents](#)

# Operation Guide

## USB CLIENT CONNECTION (CONTINUED)

1. To configure USB Connection , Click:

- a) Start
- b) Settings
- c) Control Panel
- d) PC Connection



2. Select **“Enable direct connections to the desktop computer”**.

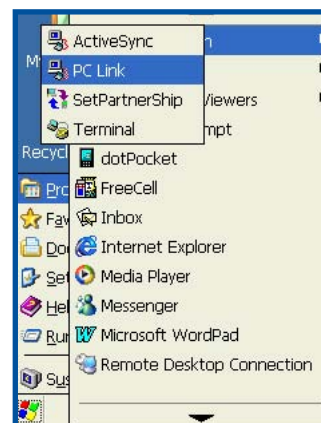
3. Click **“OK”**



4. To activate ActiveSync, Click:

- a) Start
- b) Programs
- c) Communication
- d) PC Link

**Note:** Shortcut to PC Link: Press the Function Key followed by the 1.



# Operation Guide

## USING THE VEHICLE CRADLE

A vehicle adapter/charger is required and is available through Roper Mobile Technology (Part Number CS312).



CBCE340BV with Optional Mount

## Vehicle Cradle Connector Identification

### Back of Unit:

1. USB Host
2. USB Client
3. Power Supply
4. Fuse



### Under the Unit:

5. Serial Port 1
6. Serial Port 2
7. Serial Port 3



**Note:** When installing and configuring peripherals, ensure to select the proper Port (1, 2 or 3) and to connect to the configured port once installation complete.

1. Install power supply lead by inserting round connector into the round connector at the back of the cradle (refer back to connector identification).
2. Turn ring clockwise to hold in place.
3. Connect other end of connector to cigarette lighter.

### Note:

- The Vehicle Cradle requires a power source of 9 to 30 Vdc.
- Ensure cigarette lighter connector is clean and corrosion-free to provide the least electrical resistance.

[Return To Table of Contents](#)

# Operation Guide

---

## USING VEHICLE CRADLE (CONTINUED)

### Making your own Power Supply Lead

To make your own power supply lead, you may order the power connector at Roper Mobile Technology using the following information:

- Roper Mobile Technology item #: NAM036
- Manufacturer's name and item #: SwitchCraft 760K

#### **Note:**

- Be sure to insert a 3 amp time-lag fuse, or if you are using a fuse box, ensure to use a similar fuse.
- All contacts must be clean and corrosion-free to avoid electrical resistance.
- Keep the length of the Lead to a minimum.

### Wiring

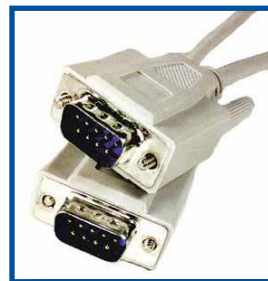
The Vehicle Cradle can have up to 3 serial cables connected at the same time. The DU-C-0040 measures approximately 180 cm (70 in) and includes 2 DB-9 sockets. Its sole use is for communicating with the host computer via ActiveSync.

**Note:** Another type of cable may be required to link certain devices such as a GPS or external radio. The DU-C-0040 may not be the appropriate cable for these devices and a special cable might therefore be required. To customize your own cable, refer to the "Serial Connector Pin Layout" section for further information.

### Installing Vehicle Mount

The vehicle cradle is compatible with the RAM-MOUNT System.

- Roper Mobile Technology item #: DC813
- RAM-MOUNT item number: RAM-B-101U



DU-C-0040

RAM-MOUNT offers several installation possibilities. For further information, consult their web site at [www.ram-mount.com](http://www.ram-mount.com).

The DC813 hinged support is comprised of the following parts:

1. 1 RAM-B-201 Socket Arm with Handle
2. 2 RAM-B-202 anti-vibration balls
3. 3 screws

# Operation Guide

---

## USING VEHICLE CRADLE (CONTINUED)

### Installing the Vehicle Mount (Continued)

1. Place one of the 2 balls underneath the cradle and align holes with the receptacles for the screws.
2. Tighten all 3 screws to secure balls into place.



3. Position the second ball against any solid area in the vehicle.
4. Secure into place by tightening 4 screws (not provided).



---

### **WARNING**

For safety reasons, it is strongly recommended that the vehicle cradle be installed at level lower than the driver's and passenger's heads.

5. Using handle, loosen the pin-head adaptor.
6. Insert each of the balls on either end of the arm.
7. Adjust cradle to desired angle and secure into position by tightening the handle.

---

### **WARNING**

Roper Mobile Technology may not be held responsible for any injuries caused by the vehicle cradle or handheld mobile computer in the event of a collision. The Vehicle cradle has been designed to withstand normal bumps and vibrations during travel. It has not been designed to secure the handheld in case of a collision.



[Return To Table of Contents](#)

# Operation Guide

## MONITORING THE PROCESS ON A 3 SERIAL PORT CRADLE

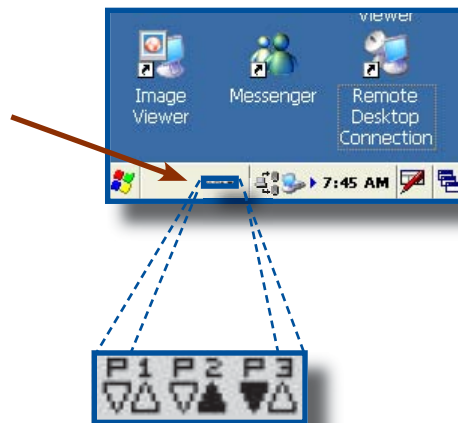
A unique feature of the 3 Serial Port Cradle will allow you to monitor the process on the CE3000B screen.

**Note:** A driver is required to ensure the 3 Serial Port Cradle (CBCE340BV) works correctly. For more information on the installation and configuration of the cradle, refer to the CE3000B Technical Guide located on [Docudap](#) technical web site.

- Cradle is powered and driver is installed correctly when the task bar displays the following icons.



- When communication begins and data is being transferred, additional icons will appear to indicate communication status.



### Serial Port Connector Pin-Out

Ports 1 2 & 3 on the CBCE340BV Cradle



PIN		DESCRIPTION	TYPE
1	CD	Carrier Detect	INPUT
2	RX	Receive Line	INPUT
3	TX	Transmit Line	OUTPUT
4	DTR	Data Terminal Ready	OUTPUT
5	GND	Ground	
6	DSR	Data Set Ready	INPUT
7	RTS	Request To Send	INPUT
8	CTS	Clear To Send	OUTPUT
9	RI	Ring Indicator	

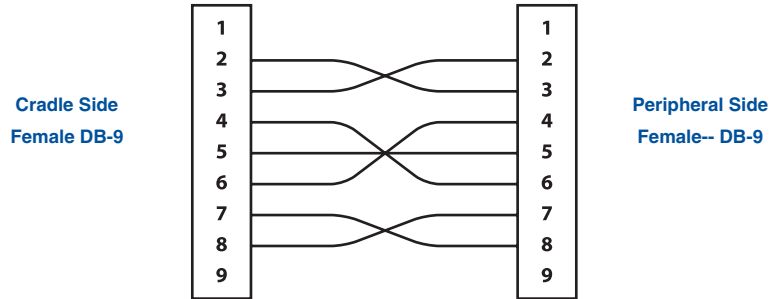
# Operation Guide

---

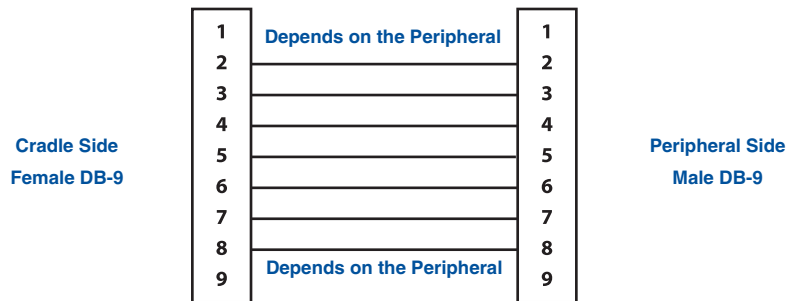
## MONITORING THE PROCESS ON A 3 SERIAL PORT CRADLE (CONTINUED)

### Serial Port Connector Pin-Out

#### Typical Communication Cable for Peripheral (Null Cable)



#### Typical Communication Cable for Peripheral



# Operation Guide

## FIELD REPLACEABLE BATTERY

The CE3000B unit comes equipped with a field replaceable battery designed to ensure quick charging, long battery life and to withstand shocks and vibrations. It is strongly recommended to use batteries that are provided by Roper Mobile Technology or one of its distributors.

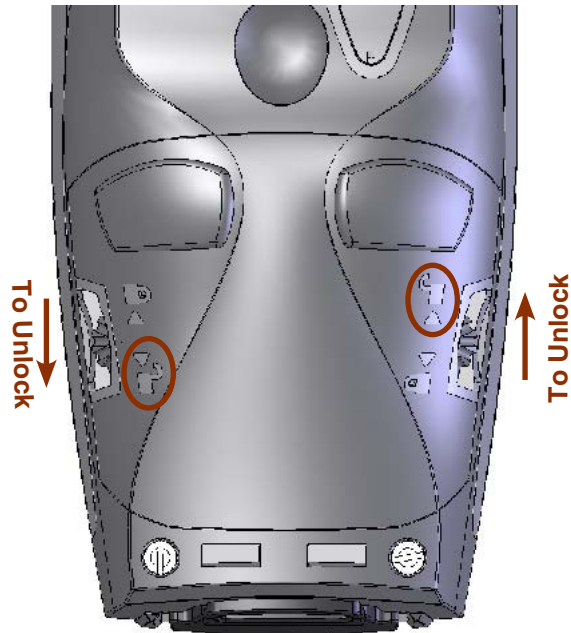
**Note:** Check for our label on the battery pack.

### **WARNING**

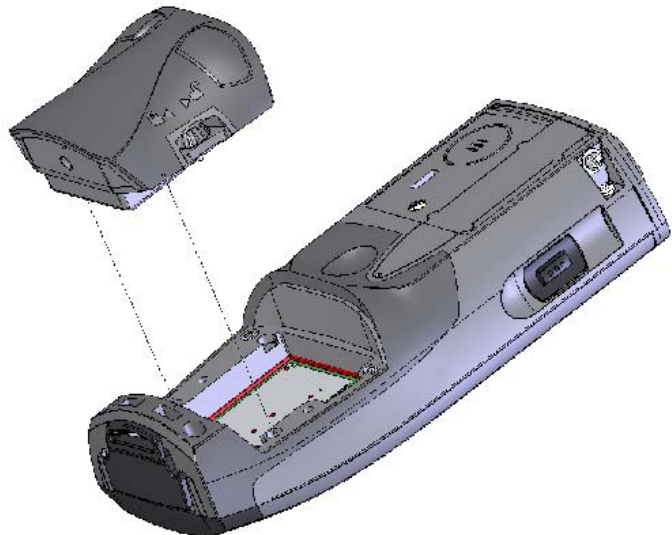
Always turn the unit off prior to changing the battery to ensure no data is lost.

### Changing the Field Replaceable Battery

1. Turn the unit off.
2. Turn **left screw downwards** and **right screw upwards** to loosen in order to remove the battery pack. (Refer to the illustration on the right).



3. Remove Battery Pack by lifting it off the unit.



[Return To Table of Contents](#)

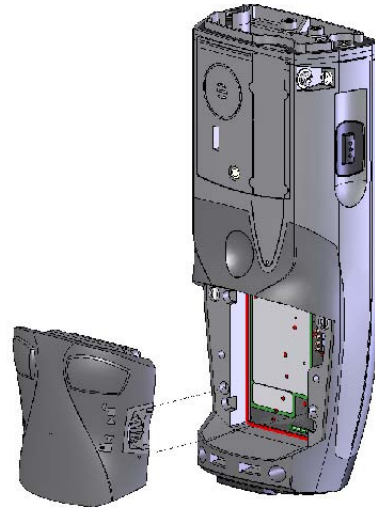


# Operation Guide

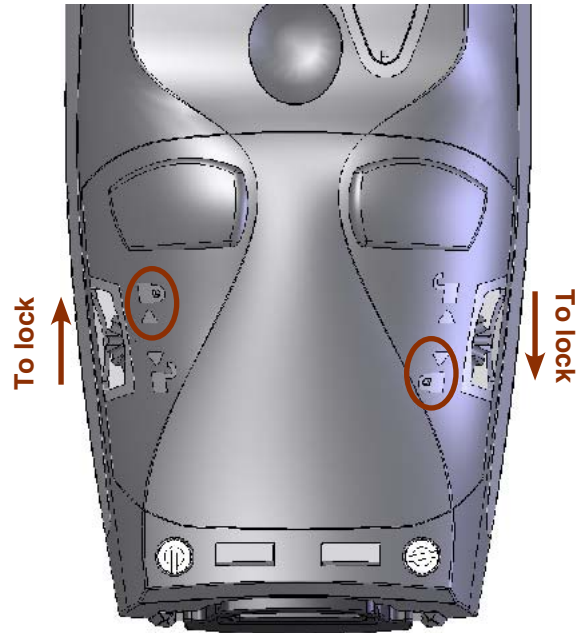
## FIELD REPLACEABLE BATTERY (CONTINUED)

4. Replace with a fully charged Battery Pack.

**Note: Ensure to insert battery pack correctly or you may not be able to tighten screws.**



5. Turn **left screw upwards** and **right screw downwards** to tighten and secure Battery Pack into place. (Refer to the illustration on the right).



[Return To Table of Contents](#)

# Adaptable Endcap Options

---

Part Number	Description
3240B-C	1D/2D Barcode Reader
3240B-EEC	Extended End-Cap
3240B-FC	Fingerprint & 1D/2D Barcode Reader
3240B-FEC	Fingerprint Reader
3240B-LEC	Laser Barcode Scanner
3240B-LF	Laser Scanner & Fingerprint Reader
3240B-NEC	Standard End-Cap
3240B-SCR	Contact/Contactless SmartCard Reader
3240B-REC	RS-232 DB9 End-Cap

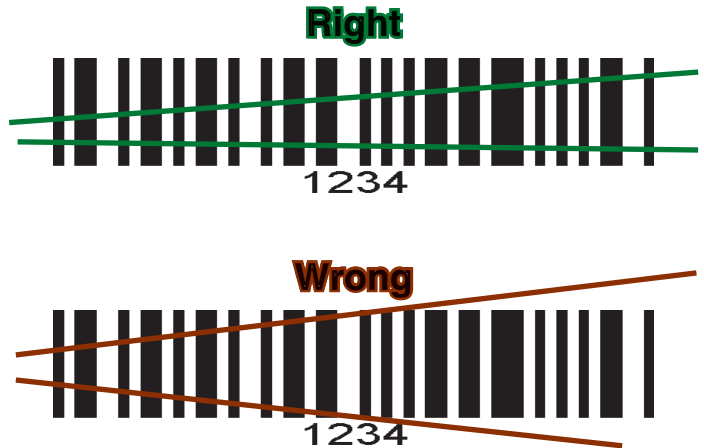
# Adaptable Endcap Options

## BARCODE READERS

### Laser Scanner

The 'Laser Scanner' function will depend on the application used and a special software driver. Refer to your application's User Guide for further instructions. Information included are basic scanning instructions.

Refer to the diagram to the right for right and wrong scanning methods.



### Testing the Scanner

1. To test the scanner, click on:
  - a) Start
  - b) Programs
  - c) DAP Utilities
  - d) CE Pad
2. To activate scanner point the top of the unit toward the barcode label needed to be scanned.
3. Press the 'trigger' button located on the side of the unit and move the unit back and forth so the beam completely crosses the label.
4. Once the label has been decoded, the unit will sound a short 'beep'.



**Note:** If you keep the 'trigger' button pressed for too long, the unit will stop scanning by itself after a few moments. The unit will sound two (2) beeps to indicate that no barcode has been detected.

**Advanced Users:** Refer to the CE3000B Technical Guide for further instructions on programming.

### CAUTION

- Avoid Exposure to Laser Light Beam.
- Do not intentionally look into the Laser Light Beam.



[Return To Table of Contents](#)

# Adaptable Endcap Options

---

## BARCODE READERS (CONTINUED)

### 2D Barcode Reader

This special option is usually installed and configured in-house at the manufacturer's.

The 2D Barcode Reader is primarily controlled by the client application and a special driver. Therefore, please refer to your application specialist or supervisor for further instructions.

**Note:** You may also refer to the CE3000B Technical Guide located on DocuDap for further instructions on

### Testing the Reader

1. To test the reader, click on:
  - a) Start
  - b) Program
  - c) DAP Utilities
  - d) CE Pad
2. To activate reader, press the 'trigger' button.
3. Hold the unit steadily at a distance of 10 cm (4 in), from the barcode.



---

### **WARNING**

Do not move the unit while scanning or scan will not function.

**Note:** Unlike the laser scanner, the 2D reader does not “swipe” the barcode, but rather, it takes a photograph which is then recognized and interpreted by the unit. The photograph can be taken from any direction.

The 2D Barcode Reader will emit a red beam allowing the user to adequately focus on the barcode needing to be read.

Once the reading has been completed, the device will emit a sound and the confirmation LED will turn green for a moment. The numeric code will then be displayed on the screen.

You can release the trigger at any time to cancel the scanning. Two short beeps indicate that scanning has ended.

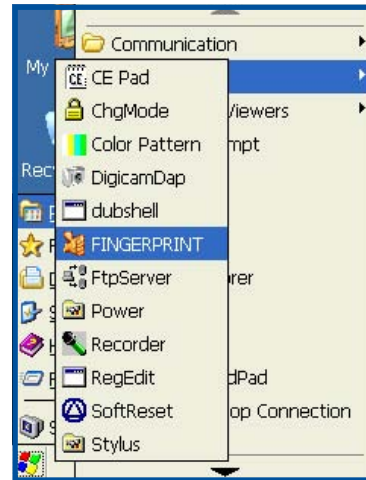
# Adaptable Endcap Options

## FAST FINGERPRINT SENSOR

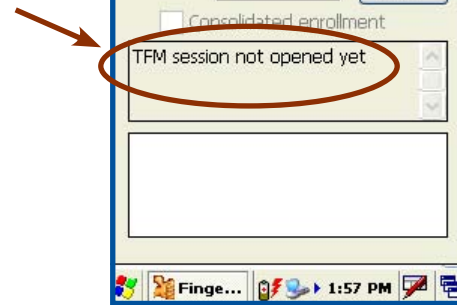
### Testing the Fingerprint Sensor

1. Click on:

- a) Start
- b) Programs
- c) Dap Utilities
- d) Fingerprint

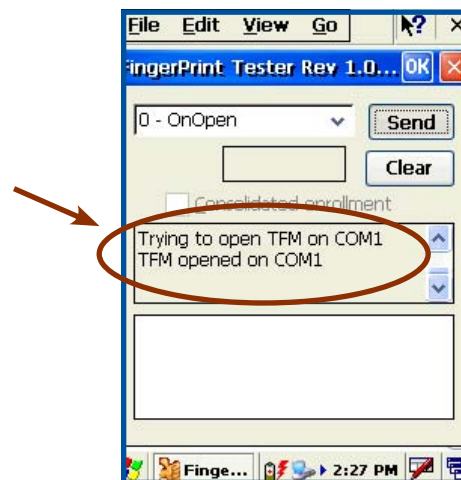


2. This window will appear indicating **“TFM Session is not opened yet.”**



3. Click send to open session.

4. Wait until this message appears in the middle section of the window.

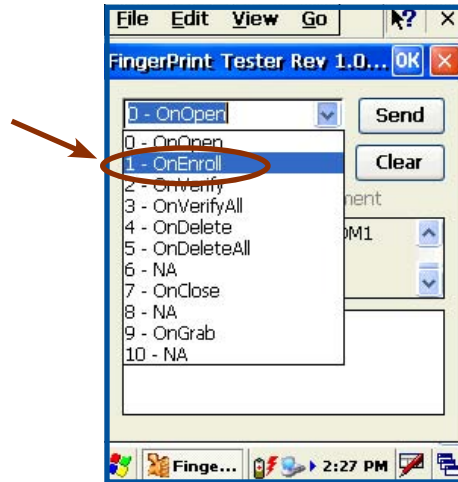


# Adaptable Encap Options

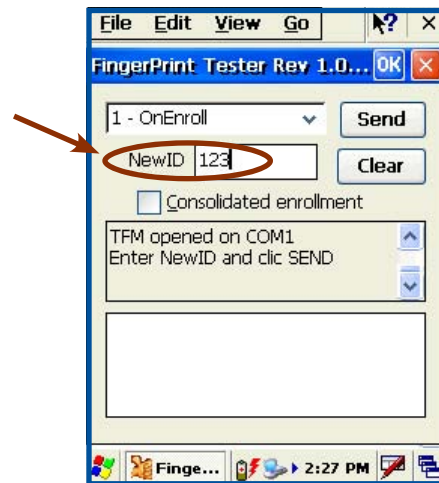
## FAST FINGERPRINT SENSOR (CONTINUED)

### Testing the Fingerprint Sensor (Continued)

5. Select **1 - OnEnroll** from the drop down menu.



6. Enter **New ID Number** and click **Send**.



7. Place finger on Fingerprint Sensor and wait for fingerprint recognition.



# Operation Guide

## FAST FINGERPRINT SENSOR (CONTINUED)

### Testing the Fingerprint Sensor (Continued)

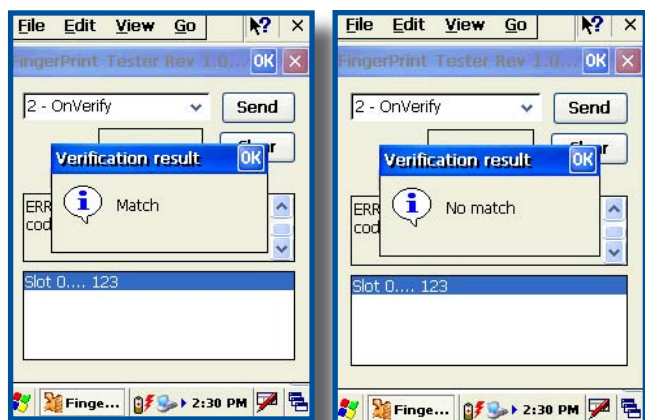
1. If Fingerprint image was taken appropriately, this screen will appear.
2. If the image was read correctly, you may now verify database for fingerprint recognition.



3. Click “OnVerify” to verify fingerprint in Database.
4. Click “Send” and wait a few moments for a Database search.



5. After a few moments, the “Verification Result” will be displayed.
6. It will either indicate “Match” or “No Match”.



[Return To Table of Contents](#)

# Operation Guide

## SMARTCARD READER (CONTACT & CONTACTLESS)

The CardMan® 5121 is based on a 13.56 MHz contactless Smart Card Interface that is compliant with ISO Specifications 14443 A, B and 15693. The reader works with a variety of 13.56 MHz contactless Smart Cards including but not limited to:

- Philips: MIFARE®, DESFire®, MIFARE ProX® Smart MX, and i.code;
- HID: ICLASS®
- Texas Instruments: TagIT®
- ST Micro: x-indent, SR 176, SR 1X 4K
- Infineon: My-d (in secure mode UID only)
- Atmel: AT088RF020

Host Interface	
USB 2.0 CCID (also supports 1.1)	√
Transmission speed	12 Mbps
Power Supply	Bus Powered Max. U25mA
Contactless (RFID) Smart Card Interface	
ISO 14443 A	√
ISO 14443 B	√
ISO 15693	√
Compliance	
Microsoft® WHQL Certified	√
USB 1.1 & 2.0	√
API	
PC / SC Driver	√
Synchronous API ( On top of PC/SC)	√

PC/SC Driver Support	
Windows CE 3.0 Support / CE.NET (depending on the software)	√
Hardware Specifications	
Dimensions (LxBxH)	57 x 40 x 1.5 mm
Weight	20 grams <b>without</b> Contact Connector; 40 grams <b>with</b> Contact Connector
Operating Temperature	10 - 55° C (32-131° F)
Operating Humidity	10 - 90 % rH
Meantime Between Failure (MTBF)	500,000 hours
Safety & Environmental Standards (pre-certified)	
CE, FCC & UL	√

**Note:** A basic Demo Program can be provided upon request. Contact your Customer Service Representative nearest you.



# Advanced Settings

## ADVANCED BATTERY OPTIONS

### To See Power Remaining

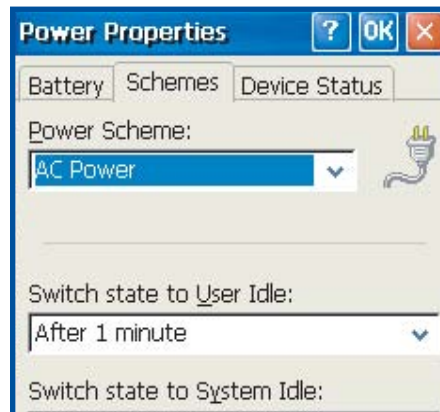
1. Under Windows CE 5.0, click on:
  - a) Start
  - b) Settings
  - c) Control Panel
  - d) Power
  - e) Battery



### Preserving Power

It is possible to extend battery life by modifying the power delays of the unit, screen and backlighting settings.

1. To setup the screen and backlight delays, click on:
  - a) Start
  - b) Settings
  - c) Control Panel
  - d) \_Power
  - e) Power Off



### Battery Power Management

All CE3000BB units are delivered with a calibrated Main Battery.

1. Define "Low Level" as per your selection and applications used.

**Note:** The default settings are 16% for "Low Level" and 5% for "Very Low". When the battery reaches the low level the battery status indicator will flash red. A 5% the battery status indicator continues to flash and a window will display to indicate to the user that the battery is at a critical level and must be re-charged.



[Return To Table of Contents](#)

# Advanced Settings

---

## BACKGROUND DISPLAY AND CONTRAST

The Screen display has been configured to ensure lighting is optimized in all possible environments and conditions. However, in extreme conditions and outside the normal temperature range (-20°C to +50°C (-4°F to + 122°F)), manual readjustment might be necessary.

## ACTIVESYNC COMMUNICATION

Using the Microsoft ActiveSync communication, it is possible to transfer files between a desktop computer and the CE3000B unit.

**Note:** With Microsoft Outlook 2002 or later, it is also possible to synchronize information between the desktop computer and the CE3000B unit.

### ActiveSync Setup

**Note:** ActiveSync Client is already installed on the unit and the “ActiveSync Host” must be setup on the desktop computer in order to function. (Should the host not be installed on the desktop, follow the instructions below.

1. Download the latest version of the Microsoft ActiveSync Software from one of the following sites:
  - a) From the **Microsoft Web Site**
  - b) From **DAP Technologies Customer Support Web Site** @ [www.support.daptech.com](http://www.support.daptech.com)
2. Once download is complete, launch the ActiveSync “**Install**” program. A screen will appear prompting you to Setup Microsoft ActiveSync Program.
3. Click **Next**
4. A screen will appear prompting you for what folder to save the program. The **default folder** is recommended.
5. Click **Next**
6. Once installation is completed, click “**Finish**”. If prompted “Create Partnership between Desktop and CE Device, Click “**Cancel**”.
7. Once the installation has been successfully completed, the ActiveSync Applet will be displayed on your desktop and an icon will be added to your Task Bar. (The Software program will also be available through the Start Menu).

# Advanced Settings

## PARTNERSHIP WITH ETHERNET CRADLE:

**Note:** The “Ethernet Partnership” is only possible with ActiveSync 3.7 or 3.8.

The Ethernet connection requires the use of a cradle model # and an Ethernet cable connected between the cradle and your network. Refer to the “**using the Cradle**” section for further instructions.

An initial Ethernet connection normally requires a “Partnership” with your “Host” computer using a serial or USB port. Roper Mobile Technology has made these following programs available to assist in the creation of the “ Ethernet Partnership” when using the Ethernet cradle:

- SetPartnerShip.exe (Already installed on the CE3000B unit)
- PartnerShip Server.exe (This program must be downloaded)

### Download PartnerShip Server.exe

1. Go to <http://www.support.daptech.com>
2. Refer to CE.NET PUBLIC DOWNLOAD
3. Copy to a folder that will be easily accessible; e.g. Desktop Folder.

### Create first Ethernet partnership

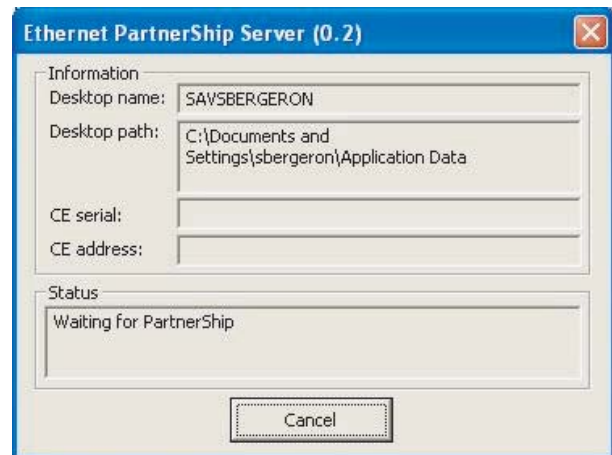
1. Install the CE3000B unit into its Ethernet Cradle and wait until the network has been detected.



Click on arrow to see more icons if network icons are not visible.

Network connection is established.

2. Launch **PartnerShip Server.exe** on the Host computer.



[Return To Table of Contents](#)

# Advanced Settings

---

## PARTNERSHIP WITH ETHERNET CRADLE (CONTINUED)

3. To establish PartnerShip, click on:

- a) Start
- b) Communication
- c) Set PartnerShip

4. The Ethernet PartnerShip should be established within a few seconds.

**Note:** This procedure needs only to be done once to create the first "PartnerShip".

5. To launch ActiveSync, Click on:

- a) Start
- b) Program
- c) Communication
- d) ActivSync

**Note:** For subsequent connections, simply follow step 5 to start ActiveSync.

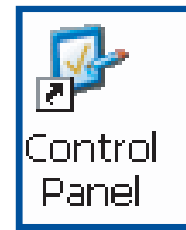


# Advanced Settings

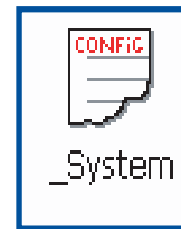
## ADVANCED USER INFORMATION

To obtain the most current technical information on your CE3000B unit, you must first register your unit @ [DocuDap Technical Web Site](#).

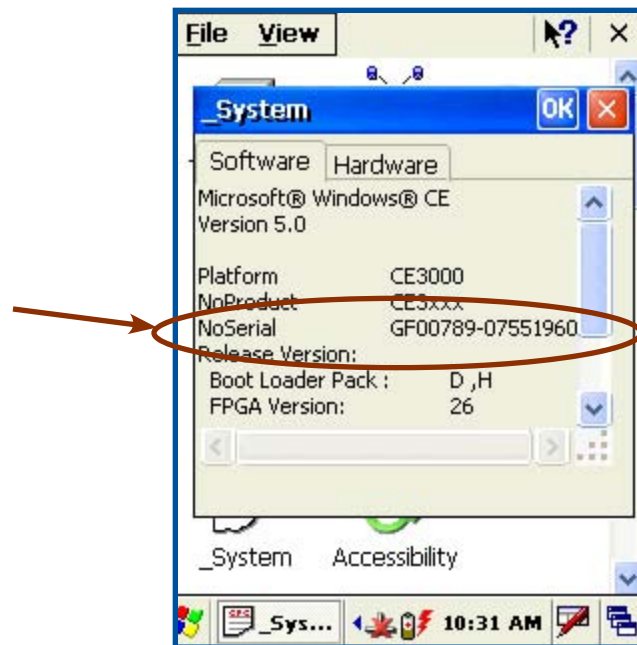
1. Click on Control Panel.



2. Click on the \_System Applet.



3. From this \_System Applet Window, note the 16 digit serial number.



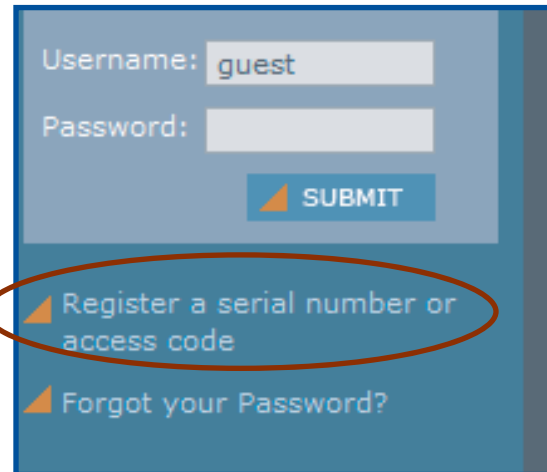
Start your Internet Browser.

Go to:  
<http://www.RoperMobile.com/DocuDap>

# Advanced Settings

## ADVANCED USER INFORMATION (CONTINUED)

1. Click on “**Register a Serial Number or Access Code**”



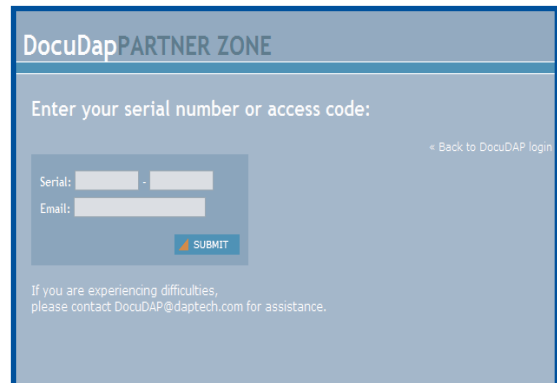
Username:

Password:

[Register a serial number or access code](#)

[Forgot your Password?](#)

2. Enter your CE3000B unit's serial number noted earlier.
3. Enter a valid Email address and your user name and password will be forwarded to you.



DocuDapPARTNER ZONE

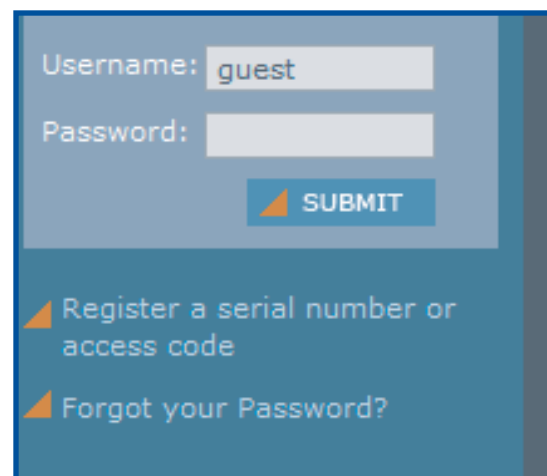
Enter your serial number or access code: [← Back to DocuDAP login](#)

Serial:  -

Email:

If you are experiencing difficulties, please contact DocuDAP@dapttech.com for assistance.

4. Return to DocuDap login and enter the information that was provided to you and click “**Submit**”.
5. You may now surf the Technical Web Site for more technical and advanced user information.



Username:

Password:

[Register a serial number or access code](#)








[Forgot your Password?](#)

# Companion Programs

This section lists several programs that are included with the CE3000B unit and provides a brief description of their functions. However, **Not all programs are covered.**

It is **not** the intent of this User Guide to describe the applications included. Please refer to [DAP Technical Web Site](#) for further instructions on DAP programs included or the [Microsoft Web Site](#) for Microsoft Programs included.






## DAP CE3000B PROGRAMS

Icon	Name	Definition
	CE Pad	A Small Test Editor.
	Color Pattern	To verify color screen quality.
	Power Remaining	Display Power Applet.
	Soft Reset	Reset the unit. The supervisor mode is required.
	Recorder	Allows you to playback wave files and recorded messages.
	Change Mode	Switch between the User and Change mode.
	Fast Fingerprint Sensor	Fingerprint Demo.

[Return To Table of Contents](#)

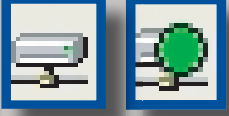
# Companion Programs

## MICROSOFT PROGRAMS

Icon	Name	Definition
	Inbox	Send and receive Emails by synchronizing Desktop with CE3000B unit.
	Microsoft Viewer Suite	Will display Excel files, images, PDF, PowerPoint and Word files.
	MSN Messenger	Chat on MSN Messenger. Requires an Microsoft Passport or Exchange Email Account which is provided by employer.
	Internet Explorer	Surf the Web by synchronizing pages with desktop computer or by connecting to Internet.
	Media Player	Play music or video files.



# Troubleshooting Guide

Problem / Failure	Recommended Action
<p>Low Battery Messages on the Main Battery.</p>	<ol style="list-style-type: none"> <li>1. Still some power remains but it is recommended that you replace the battery before Data is lost.</li> </ol>
<p>If neither of these 2 icons appear in the Task Bar when using Ethernet Cradle.</p> 	<ol style="list-style-type: none"> <li>1. Verify Network cable is connected on the back of the cradle.</li> <li>2. Verify Network cable is not defective.</li> <li>3. Ethernet on-board adapter may be deactivated or in Power Save Mode.</li> </ol>
<p>The screen is blank and keyboard does not sound the 'beep' when a key is pressed.</p>	<ol style="list-style-type: none"> <li>1. Verify that the unit is turned on.</li> <li>2. Verify that the battery is fully charged.</li> </ol>
<p>The unit does not turn on.</p>	<ol style="list-style-type: none"> <li>1. Verify batteries --- batteries may need re-charging. Once unit is placed on the charger, the unit should turn itself on in the next few seconds and re-start the operating system.</li> </ol>
<p>The PC Card does not connect.</p>	<ol style="list-style-type: none"> <li>1. Verify that the PC Card is inserted properly. Refer back to the section "Using PC Cards"</li> </ol>
<p>The display contrast is very weak or background very dark.</p>	<ol style="list-style-type: none"> <li>1. Verify the display contrast settings are appropriately set. Use the contrast keys to adjust the settings. (Refer to "<b>Background Display and Contrast Advanced Settings</b>" for further instructions.</li> </ol>
<p>The unit does not turn off automatically or manually.</p>	<ol style="list-style-type: none"> <li>1. Verify unit is properly connected to the charger.</li> <li>2. Verify "shutoff" feature is properly configured.</li> </ol>

# Storage & Maintenance

---

The CE3000B Unit is a reliable product requiring little maintenance. Only occasional replacement of the battery and the carrying strap is required.

---

## **WARNING**

There are no user-serviceable parts inside the CE3000B Unit. Do not try to repair the unit as this may affect proper functioning as well as **void** the warranty.

### STORAGE

- If the unit is not going to be used for a few days or more, the unit may be kept directly on the charger.
- If the unit is not going to be used for a few weeks, it is strongly recommended that the unit be fully charged and stored in a location where the temperature will be between 20°C (68°F) to 25°C (77°F).

---

## **WARNING**

- If extended storage time is necessary, it is important to backup all data to ensure no data is lost or corrupted.
- Keeping the unit on the Charger is also possible, however, this may affect the battery life and capacity over time. It is recommended that the unit be re-charged daily.

### CLEANING

Use a normal soft cloth and mild soap to clean the CE3000B unit. Do not use abrasives as these cleansers may damage the finish and scratch the touch screen. Ensure that all compartments are properly closed prior to cleaning unit.

### SHIPPING THE UNIT

The CE3000B units have been designed to withstand vibrations and shocks that can occur during normal use of the product. However, should shipping one of these units be required, it is strongly recommended that these be packaged in the same packaging the unit was delivered in, or similar packaging to avoid any damage to the units during transportation.

### CARRYING STRAP

To clean the strap, simply use a mild soap and a normal soft cloth. If there is extensive wear on the strap, it may be time to change it.

# Storage & Maintenance

---

## BATTERY MAINTENANCE

### Main Battery

The high-quality Lithium-Ion battery provided with your unit may be re-charged over 500 times according to the battery manufacturer.

**Note:** If the battery's duration does not last the normal time-frame specified, it may be time to change it. The main battery should last from 12 to 24 months if used under normal working conditions.

### Backup Battery

The Backup Battery will normally not need to be replaced during the expected life of the CE3000B unit. Re-charge as specified after use.

### Replacing the Battery

**Note:** Always turn the unit off before removing the battery. The CE3000B Unit uses an approved battery to ensure a quicker charging time, longer battery life and resistance to shock and vibrations. To ensure that the batteries are appropriate for use on DAP equipment, it is strongly recommended that these be purchased directly through Roper Mobile Technology or one of its distributors. (Check for our logo on the battery). Refer back to "Field Replaceable Battery" for further instruction on changing the battery of your CE3000B unit.

# Storage & Maintenance

---

## TOUCH SCREEN MAINTENANCE

The Touch Screen requires minimal maintenance. Only appropriate care when using and cleaning the touch is required. Use the Stylus provided with the unit when using the touch screen to ensure other pointed devices do not damage the screen. When cleaning, ensure to use a mild detergent and soft cloth.

---

### **WARNING**

- Do Not use abrasives as these may damage the finish and scratch the touch screen.
- Replace or clean the Stylus as soon as it seems damaged or dirty.

## ADAPTABLE ENDCAP WITH LASER OPTION

**Note:** The efficiency of the Laser reading will depend on the quality of the plastic window. Any scratch, dirt or finger prints will degrade the reading quality.

1. Clean aDAPtable end cap using a mild detergent and soft cloth to ensure no scratches to the window. (A plastic Lens cleaner can also be used for cleaning the window).

## QUICK-REFERENCE REPLACEMENT PARTS LIST

Part Description	Part Number
Lithium-Ion Battery	DCCE300
Carrying Strap (4 per package)	DCCE301
Stylus (Pen) (5 per package)	DCCE303

# Recycling Passport

---

CE3000B UNIT



The Waste Electrical and Electronic Equipment Directive (WEEE) is a European directive established in 2003 for the collection, recycling and recovery targets for all types of electrical goods.

This European Directive imposes the responsibility for the disposal of waste electrical and electronic equipment on the manufacturers of such equipment.

In accordance to this directive, DAP Technologies will assist you in the proper disposal of your DAP Units.

For further instructions on how to dispose of these units, please refer to our web site:

[www.RoperMobile.com](http://www.RoperMobile.com)



[Return To Table of Contents](#)

# CE Conformity

---

The CE3240B, has been tested and is in compliance with the 89/336/EEC European Directive for Electromagnetic Compatibility.

## Electromagnetic Emissions & Electromagnetic Immunity

Standards	Definition
EN55022	Radiated & Conducted, Class B
ENV 50204	Radiated electromagnetic field from radio telephones
EN 61000-4-2	Electrostatic discharge
EN 61000-4-3	Radiated Immunity
EN 61000-4-5	Surge
EN 61000-4-6	Conducted Immunity
EN 61000-4-11	Voltage Variation
EN 61000-3-2	Harmonic
EN 61000-3-3	Flickers

### **RADIO FREQUENCY EXPOSURE REQUIREMENTS (only for models with Wireless WAN)**

For body worn operation, this product has been tested and meets FCC RF exposure guidelines when used with an accessory that contains no metallic component. Use of other accessories may not ensure compliance with FCC Radio Frequency exposure guidelines. This device shall not be co-located or operating in conjunction with any other antenna or transmitter.

### **INFORMATION TO USER**

This device complies with Part 15 of the FCC Rules. Operation is subject to the following two conditions: (1) This device may not cause harmful interference, and (2) This device must accept any interference received, including interference that may cause undesired operation.

This equipment has been tested and found to comply with the limits for Class B Digital Device, pursuant to Part 15 of the FCC Rules. These limits are designed to provide reasonable protection against harmful interference in a residential installation. This equipment generates and can radiate radio frequency energy and, if not installed and used in accordance with the instructions, may cause harmful interference to radio communications. However, there is no guarantee that interference will not occur in a particular installation. If this equipment does cause harmful interference to radio or television reception, which can be determined by turning the equipment off and on, the user is encouraged to try to correct the interference by one or more of the following measures:

- Reorient or relocate the receiving antenna
- Increase the separation between the equipment and receiver
- Connect the equipment into an outlet on a circuit different from that to which the receiver is connected
- Consult the dealer or an experienced radio/TV technician for help

Any changes or modifications not expressly approved by the party responsible for compliance could void the user's authority to operate the equipment.

For more information about RF exposure, please visit the FCC web site at [www.fcc.gov](http://www.fcc.gov)

For more information about the product certification, please contact [support@daptech.com](mailto:support@daptech.com)

### **COPYRIGHT POLICY**

Any software described in this document is provided under a license agreement or non-disclosure agreement. It is strictly prohibited by law to copy any portion of the software provided by DAP Technologies onto any media format.

DAP is a registered trademark of DAP Technologies. Microsoft, MS-DOS and Windows CE are registered trademarks of Microsoft Corporation. PCM CIA and PC Cards are also registered trademarks of Microsoft Corporation.

**Note:** A Copyright Policy is also applicable for any software provided by Microsoft on DAP Products. Please refer to **Microsoft End User License Agreement** Section for further information.

# Microsoft End-User License Agreement

---

You have acquired a DAP device that includes software licensed from Microsoft Corporation. The Microsoft software included in your device, as well as associated media, printed materials, and online documentation are all protected by Copyright Laws and International Copyright Treaties. If you do not agree with this End-User License Agreement ("EULA"), use of this device, or use and copying of, any installed software is strictly prohibited. We strongly recommend that you immediately contact a DAP Customer Representative for return instructions of the unused unit.

## LICENSE GRANT

- The software must only be used with the device provided.
- There are no warranties for the software included.
- Reverse engineering is strictly prohibited.
- Software transfer is allowed but with restrictions. You may permanently transfer rights under this EULA only as part of a permanent sale or transfer of the device as long as the recipient agrees to this EULA. If the software is an upgrade, any transfer must also include all prior versions of the software.

## JAVA SUPPORT

The software may contain support for programs written in Java. Java technology is not designed, manufactured, or intended for use or resale as online control equipment in hazardous environments requiring fail-safe performance. These environments include nuclear facilities, aircraft navigation, communication systems, air traffic control, life support machines, or weapons.



# Warranty

---

## LIMITED WARRANTY

Roper Mobile Technology will replace or repair at its discretion, any products that prove to be defective, in terms of material or workmanship, for a period of twelve (12) months following the purchase date of the DAP HandHeld computers and its accessories.

This warranty does **not** cover damages caused by misuse, abuse, neglect, or those incurred during shipping or storage of the DAP units. This warranty does **not** cover any modifications or servicing by anyone other than a Roper Mobile Authorized Service Center.

Roper Mobile Technology shall not be held accountable for any damages caused by misuse of DAP units or damage incurred due to the installation of any other software or hardware added to these units.

---

### WARNING

DAP units and accessories should not be used in applications where device failure could result in physical injury or loss of life.

The Operating System, MS-Dos, Windows CE and all other software sold or provided by Roper Mobile Technology are provided as is, without any warranty, either expressed or implied.

In no event shall Roper Mobile Technology be liable for any direct damages, indirect damages or damages incurred by the loss of present or prospective profits arising from the failure in performance of the product.

This warranty hereby excludes all other legal warranties related to the quality of the product or its capacities to fulfill specific purposes, including all warranties granted by the United Nations Convention on Contracts for the International Sale of Goods; the application of this Convention being expressly excluded.

## RETURN MERCHANDISE AUTHORIZATION FOR SERVICING (RMA)

In order to have your product serviced, you must first obtain a Return Material Authorization, RMA Number from Roper Mobile Technology. You must return your unit in its original packaging to your Value Added Reseller (VAR), an Authorized Service Center, or directly to Roper Mobile Technology. Service under the conditions of this warranty requires prepaid shipment from your facility to a Service Center.

The DAP unit and accessories have no user serviceable parts.

To obtain an RMA Number, you may call your service center closest to you or go directly to the online RMA form @ [www.RoperMobile.com](http://www.RoperMobile.com), [click on Support, RMA form](#).

## EXTENDED WARRANTY ON ROPER MOBILE TECHNOLOGY MANUFACTURED PRODUCTS

The original purchaser may, at any time during the initial warranty period, extend the warranty with the purchase of a Roper Mobile Technology Service Contract. Contact your local VAR or Customer Support nearest you for further information.

[Return To Table of Contents](#)

# International Addresses

---

## Roper Mobile Technology Worldwide

### Office Locations

### Customer Support

#### Canada

875 Charest West Boulevard, suite 200  
Quebec City, Quebec  
Canada G1N 2C9  
T: (418) 681-9394  
F: (418) 681-0799  
TF: (800) 363-1993  
E: [Sales@RoperMobile.com](mailto:Sales@RoperMobile.com)

#### Technical Support Canada & International

+ 1 (418) 681-7833  
+ 1 (800) 363-1993  
[TechSupportCanada@RoperMobile.com](mailto:TechSupportCanada@RoperMobile.com)

#### Unites States

7450 South Priest Drive  
Tempe, Arizona  
United States, 85283  
T: (480) 705-4200  
F: (480) 705-4216  
TF: (800) 363-1993  
E: [Sales@RoperMobile.com](mailto:Sales@RoperMobile.com)

#### Technical Support USA

+ 1 (518) 293-7824  
+ 1 (800) 363-1993  
[TechSupportUSA@RoperMobile.com](mailto:TechSupportUSA@RoperMobile.com)

#### Europe

25 Nuffield Way  
Abingdon, OX14 1RL  
England  
T : + 44 (0) 1235 462130  
F: + 44 (0) 1235 462131  
TF: + (800) 8899 1000  
E: [SalesUK@RoperMobile.com](mailto:SalesUK@RoperMobile.com)

#### Technical Support EMEA

+ (800) 8899 1000  
[TechSupportEMEA@RoperMobile.com](mailto:TechSupportEMEA@RoperMobile.com)

#### Technical Support United Kingdom

+ 44 (0) 1235 462130  
[TechSupportUK@RoperMobile.com](mailto:TechSupportUK@RoperMobile.com)

#### Asia

Level 15, Shinjuku Dai-Ichi Seimei Bldg.  
2-7-1 Nishi-Shinjuku  
Shinjuku, Tokyo 163-0715  
Japan  
T: + 81-3-3340-2861  
F: + 81-3-3340-2920  
E: [SalesASIA@RoperMobile.com](mailto:SalesASIA@RoperMobile.com)



**Canada**

875 Charest Boulevard West  
Suite 200  
Quebec City, Quebec  
Canada, G1N 2C9  
T: (418) 681-9394  
TF: (800) 363-1993  
F: (418) 681-0799  
E: Sales@RoperMobile.com

**United States**

7450 South Priest Drive  
Tempe, Arizona  
United States, 85283  
T: (480) 705-4200  
TF: (800) 363-1993  
F: (480) 705-4216  
E: Sales@RoperMobile.com



mobile **technology**

Innovations for a Rugged World

[www.RoperMobile.com](http://www.RoperMobile.com)

Printed in Canada