

Introduction

PRODUCT SPECIFICATIONS (CONTINUED)

ELECTRICAL & ENVIRONMENTAL REQUIREMENTS (Continued)	Free Fall Drop Resistance (*): <ul style="list-style-type: none">• Meets and exceeds IEC 68-2-32 method 1 (2 meter drop on concrete)• Meets and exceeds MIL-STD-810F method 516.4 procedure IV<	Electrostatic Discharge: <ul style="list-style-type: none">• Meets EN 61000-4-2
Approvals	<ul style="list-style-type: none">• CE Certification	<ul style="list-style-type: none">• FCC Class B
Warranty	Manufacturer's warranty: 1 year parts & labor	Optional DAPCare Warranty extension available

Roper Mobile Technology reserves the right to change specifications without notice.

WARNING / CAUTION / NOTE DEFINITION

The words WARNING, CAUTION, and NOTE carry special meanings and should be carefully reviewed.

WARNING

Alerts the reader about a situation, which if not avoided, could affect the proper functioning of the unit and result in permanent damage to the unit.

CAUTION

Alerts the reader of a potentially hazardous situation, which if not avoided, may result in minor injury to the user or may cause damage to the equipment. This includes special care necessary for the safe and effective use of the device and the care necessary to avoid any damage that may occur as a result of use or misuse.

Note:

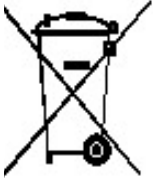
This provides special information to make important instructions clearer.

[Return To Table of Contents](#)

Symbols



Warning, pay special attention.



In accordance with European Directive 2002/96/EC on Waste Electrical and Electronic Equipment (WEEE), this symbol indicates that the product must not be disposed of as unsorted municipal waste, but should be collected separately. Refer to your local distributor for return and/or collection systems available in your country.



Caution must be used when this symbol is present. This symbol indicates a danger for laser radiation.

Safety Precautions

WARNING

- Refer to this Guide when inserting or removing batteries, cables or external peripherals.
- Operate and store your DAP unit within the temperature limits specified in this Guide.
- Do not use any pointed objects on the keyboard, door or mechanisms. Doing so may damage the unit.
- Use the 'Stylus' which has been provided with the unit by Roper Mobile Technology, as it has been designed with a non-abrasive material that cannot scratch or damage the touch screen.
- Never expose the battery to extreme heat or dispose of by burning.
- Any attempts to open the case of a CE3240B unit will void the warranty.
- If you need to use a cable other than the ones provided or recommended by Roper Mobile we recommend that you contact your Customer Service Representative nearest you.

Quick Tour

FRONT VIEW

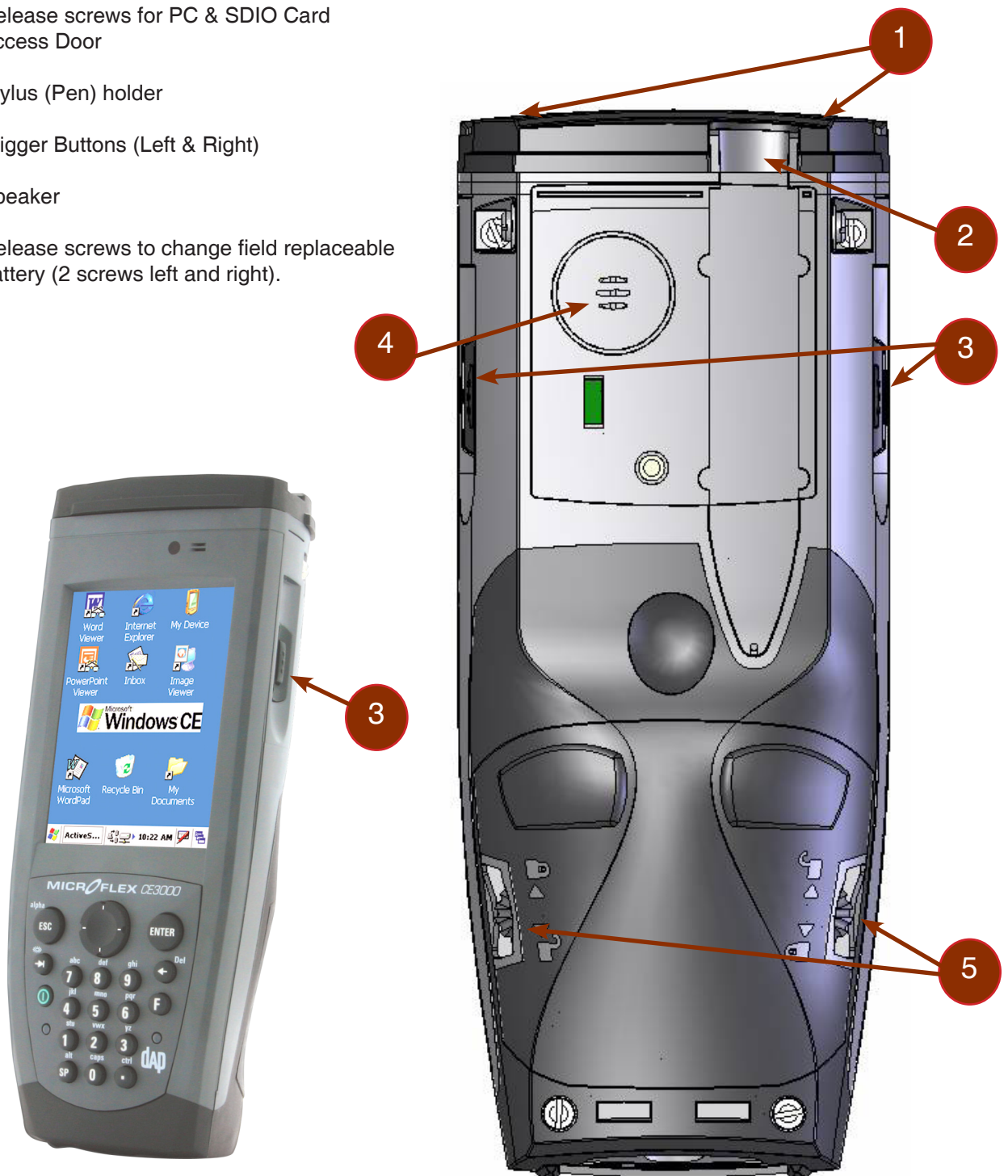
1. On/Off Key
2. Light Sensor
3. EndCap with aDAPtable Extension
4. Color Screen
5. Microphone
6. Battery Status Indicator
7. Cradle Communication Connector
8. Head-Set Adapter
9. Hand Strap Attachment
10. Trigger Button (both sides)
11. Function Key
12. Navigation Key
(Left, Right, Top & Bottom)



Quick Tour

BACK VIEW

1. Release screws for PC & SDIO Card Access Door
2. Stylus (Pen) holder
3. Trigger Buttons (Left & Right)
4. Speaker
5. Release screws to change field replaceable battery (2 screws left and right).



[Return To Table of Contents](#)

Getting Started

WARNING

Upon receiving your CE3000B unit, it is strongly recommended that you first charge the batteries prior to use. These following messages are likely to appear due to the length of time the unit was stored. When the battery reaches the low level, the battery status indicator will flash red. The Main Battery field will be highlighted as “Low” under the Battery or Status Tab. It will remain highlighted as long as the battery level is between 6% and 16%.

BATTERY WARNINGS

Main Batteries Very Low

Following several hours of use or storage, the main battery will become very low and this **warning** will appear when there is still some power remaining.

At 5% the battery status indicator continues to flash and a window will display to indicate to the user that the battery is at a critical level and must be re-charged. This warning shall be displayed approximately every 4 minutes for as long as the battery is below 5 %

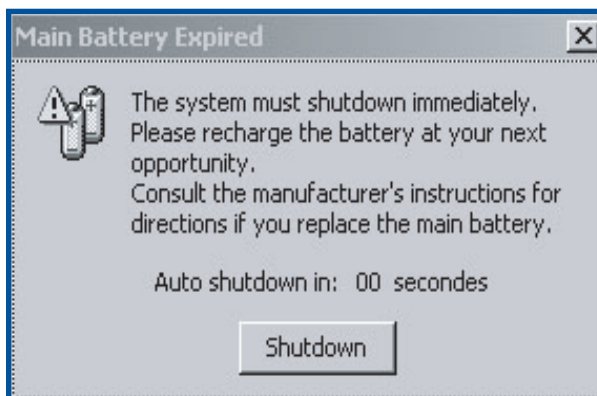
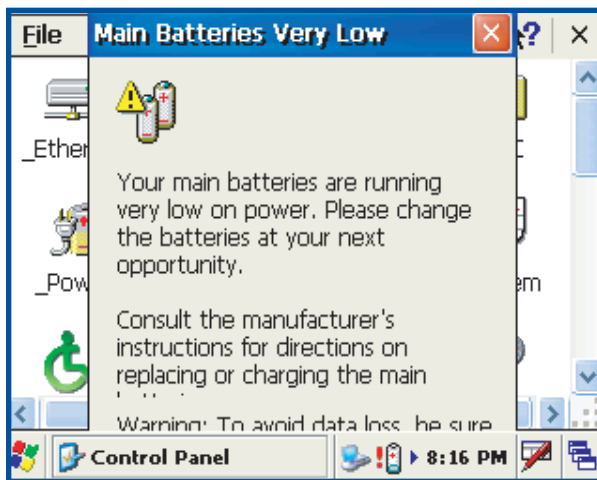
It is strongly recommended that the batteries be re-charged immediately to avoid loss of data.

Note: The level at which this warning is to appear can be configured according to preference. Refer to “**Battery Power Management**” for further instructions.

Main Battery Expired

This warning will appear when the power is too low.

Turn the unit off immediately and recharge the batteries.



WARNING

Data may be lost if the unit is not re-charged immediately.

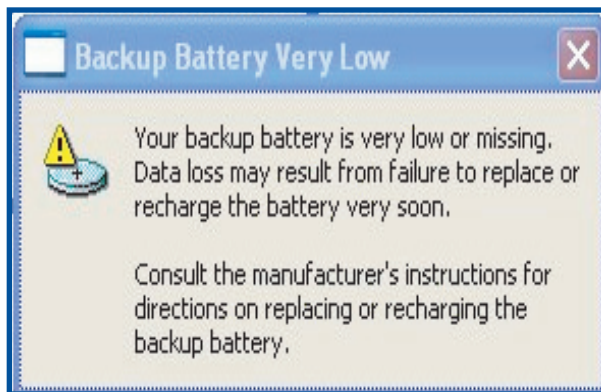
Backup Battery Low

The backup battery will save programs and files in the memory for days. The backup battery is used when replacing the main battery or when the main battery has expired. The backup battery will be re-charged every time the main batteries are charged.

Note: The life of the backup battery will depend on:

- The residual power of the main battery.
- The amount of memory installed in the unit.

[Return To Table of Contents](#)



Getting Started

CHARGING THE BATTERY

1. The installation requires the Modular Charger CSCE300-NA (North America - 110V / 120V AC Adapter) or the CSCE300-EU (Europe 220V) or the CSCE300-UK (United Kingdom 220 V).



CSCE300-NA,
CSCE300-EU,
CECE300-UK

2. Insert modular charger into round connector (a) at the back of the cradle.
3. Connect the Modular Charger to the wall outlet.



4. Insert unit into cradle.

Note:

- The CE3240B Battery Status indicator will turn red in the next 5 seconds indicating that charging is now in progress. The light will turn green when charging is complete. Charging may take up to 3 hours.
- If the unit was turned off, it should turn back on after a few seconds or after 2 to 3 minutes if the main battery charge has been very low for some time. Processing will resume exactly where it was interrupted once re-charging starts.



[Return To Table of Contents](#)

Getting Started

BATTERY STATUS INDICATOR

Color	Definition
Red	Charger is connected and charging.
Green	Battery is fully charged.
Blinking Red	Warning, low battery
Yellow	Charger detected, but the battery charger temperature is too high or too low to re-charge. Charge will start when temperature is adequate.
No Light	Power from the charger is not detected.



Operation Guide

TURNING THE UNIT ON & OFF

Once charging is complete, the unit will automatically turn itself off after approximately 3 minutes.

Turn Unit On

1. To turn on the CE3240B Unit, press the **ON / OFF** key for 2 seconds and release.



Note: Should the unit not turn on, it could be because the battery is too low. Refer back to “**Charging the Battery**” Section for further instructions.



Turning the Unit Off Manually

There are two ways to turn the unit off:

1. Press on the Start button located at the bottom left corner of the screen and then select “Suspend”



or

2. To manually turn off the CE3240B unit, press the Function Key followed by the ON / OFF Key.



[Return To Table of Contents](#)