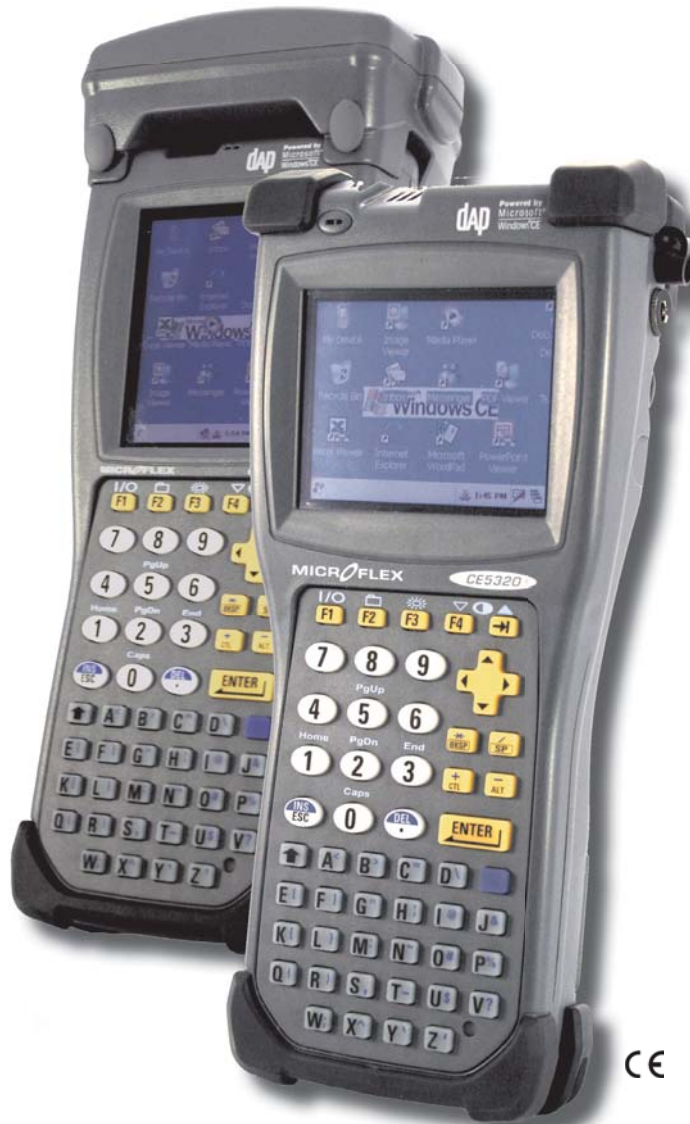


CE5000B User Guide



Agile Performer HandHeld Mobile Computer



International Addresses

DAP Technologies Worldwide

Office Locations

Customer Support

Canada

875 Charest Boulevard West Suite 200
Quebec City, Quebec
Canada G1N 2C9
Sales T: (418) 681-9394 or
General T: (418) 681-7833
F: (418) 681-0799
TF: (800) 363-1993
E: SalesNA@daptech.com

Technical Support Canada & International

T: (418) 681-3210
TF: (800) 363-1993
E: TechSupportCanada@daptech.com

United States

7450 South Priest Drive
Tempe, Arizona
United States, 85283
TF: (800) 363-1993
E: SalesNA@daptech.com

Technical Support USA

T: (518) 293-7824
TF: (800) 363-1993
TechSupportUSA@daptech.com

Europe

25 Nuffield Way
Abingdon, OX14 1RL
England
T : + 44 (0) 1235 462130
F: + 44 (0) 1235 462131
TF: +44 0 (800) 8899 1000
E: SalesUK@daptech.com

Technical Support EMEA & UK

T: (800) 8899 1000
E: TechSupportEMEA@daptech.com



Canada

875 Charest Boulevard West
Suite 200
Quebec City, Quebec
Canada G1N 2C9
T: (418) 681-9394
TF: (800) 363-1993
F: (418) 681-0799
E: SalesNA@daptech.com

United States

7450 South Priest Drive
Tempe, Arizona
United States 85283
TF: (800) 363-1993
E: SalesNA@daptech.com

United Kingdom

25 Nuffield Way
Abingdon OX14 1RL
England
T: + 44 (0) 1235 462130
TF: + 44 (0) 800 8899 1000
F: + 44 (0) 1235 462131
E: SalesUK@daptech.com



Printed in Canada

Table of Contents

ISO 9001:2000 Certification	6
Introduction	7
Intended Use	7
Product Description	7
Product Illustration	7
Product DATA (See Specification Sheet for more detail)	8
Warning / Caution / Note Definition	9
Symbols	10
Quick Tour	12
Front View	12
Back View	13
Getting Started	14
Battery Warnings	14
Main Batteries Very Low	14
Main Battery Expired	14
Charging the Battery	15
From the Modular Charger	15
Communication Cradle	16
External Battery Charger	17
Battery Status Indicator	17
Operation Guide	18
Turning the Unit On & Off	18
Turn Unit On	18
Turning the Unit Off Manually	18
Automatic Shut-Off	19
Touch Screen	19
Touch Screen Calibration	19
Using the Touch Screen	19
Using the Keyboard	21
Multi-Key Entry	21
Digit & Letter Keys	21
Auto-Repeat	21
Upper Case	21
Punctuation & Special Symbols	22
Function Keys	22
Activating the Screen & Keyboard Backlight	22
Virtual Keyboard	23
Using PC Card	25
Inserting PC Cards	25
Removing PC Cards	26
SDIO Cards	27
Inserting SDIO Cards	27
Removing SDIO Cards	28

Table of Contents

Using the Cradle	29
Using the Ethernet Cradle	29
Transferring Files in FTP Mode	30
Wireless & BlueTooth Options	32
Using Wireless	32
Using Bluetooth	33
Adaptable Endcap Options	35
Barcode Readers	36
Laser Scanner	36
Testing the Laser Scanner	36
2D Barcode Reader	37
Testing the Reader	37
GPS	38
Testing the GPS	38
Camera With Flash	41
Testing the Camera	41
Low Frequency RFID	42
Headset	42
USB Host	42
Advanced Settings	43
Advanced Battery Options	43
To See Power Remaining	43
Preserving Power	43
Battery Power Management	43
Background Display and Contrast Advanced Settings	44
ActiveSync Communication	44
Partnership with Ethernet Cradle	45
Advanced User Information	47
Companion Programs	49
DAP CE5000B Programs	49
Microsoft Programs	50
Troubleshooting Guide	51
Storage & Maintenance	52
Storage	52
Cleaning	52
Shipping the Unit	52
Carrying Strap	52
Battery Maintenance	53
Main Battery	53
Backup Battery	53
Replacing the Battery	53
Touch Screen Maintenance	55
Adaptable EndCap With Laser Option	55

Table of Contents

Quick-Reference Replacement Parts List55
Recycling Passport56
CE Conformity57
FCC Statement, Copyright Policy58
Microsoft End-User License Agreement59
Warranty, Merchandise Returns and Extended Warranty60
International Addresses61

ISO 9001:2000 Certification

DAP Technologies has documented and implemented a Quality Management System in accordance with ISO 9001:2000 International Standard (Certificate number: 95786).

This International recognition has been made possible thanks to the continual efforts put forth by DAP's Personnel.

In order to ensure continuous improvements to our products and services, we invite you to communicate your comments to our Customer Service Department by dialing:

Canada: (418) 681-3210 or (800) 363-1993

United States: (800) 363-1993

Europe: 0(800) 8899 1000

or

SalesNA@daptech.com

www.daptech.com

Introduction

INTENDED USE

This User Guide is intended to assist in the operation of the CE5000B series and applies to the CE5240B, CE5240BW, CE5320B & CE5320BW running Windows CE.NET 5.0 Operating System, Release Pack L or later and manufactured after June 1st, 2007. Should any information in this Guide be incorrect, please report your comments to your local Customer Service Representative nearest you so that this document can be made as accurate as possible.

Note: For optimal use of this User Guide in its electronic format, it is recommended to use Acrobat Reader 6.0 and higher. To download the latest version go to: <http://www.adobe.com/products/acrobat/readstep2.html>

PRODUCT DESCRIPTION

The CE5000B Series is built for use in all environments. It will survive being dropped, being subject to vibration, being used in below freezing conditions or desert heat, making it the ideal work tool for industry type applications within many market segments.

PRODUCT ILLUSTRATION



[Return To Table of Contents](#)

Introduction

PRODUCT DATA (SEE SPECIFICATION SHEET FOR MORE DETAIL)

BASE UNIT	OPERATING SYSTEM & PROCESSOR <ul style="list-style-type: none"> Windows CE 5.0 Intel XScale Bulverde - PXA270, 520 MHz MEMORY <ul style="list-style-type: none"> 128 MB Storage Flash for Win CE & File system (<i>approx. 64MB available to the user</i>) 128 MB SRAM (<i>Approx. 64 MB used for OS</i>) Optional: Additional storage via CF and SD Memory Flash Cards. Touch Screen Voice System <ul style="list-style-type: none"> Integrated and environmentally-sealed speaker 	DISPLAY <ul style="list-style-type: none"> 3.5 inch diagonal (89 mm) QVGA TFT active matrix transreflective color LCD with LED backlighting for the best match of indoor / outdoor readability Two display formats available: portrait (240 x 320 pixels) or landscape (320 x 240 pixels) KEYBOARD <ul style="list-style-type: none"> Highly ergonomic keyboard, 54 multi-function keys Alphanumeric keys with separate numeric keypad 12 definable "Hot" keys can be linked to execute programs or driver functions Ergonomic key grouping to speed up data entry Tactile and programmable audible feedback LED Backlighting
CONNECTIVITY	CE5000B WIRELESS EDITION <ul style="list-style-type: none"> Internal Bluetooth Class 2 Internal 802.11 b/g 	CE5000B ETHERNET EDITION <ul style="list-style-type: none"> Ethernet 10BASE-T, 10Mbps through the cradle
POWER	<ul style="list-style-type: none"> Rechargeable 2400 mAh Lithium-Ion battery pack (user accessible) Battery life: Typically 2 to 4 working days Integrated charge status and low battery indicator Intelligent fast charge 	<ul style="list-style-type: none"> Rechargeable backup battery ON/OFF switch, manual and automatic shutoff 12V DC Power Jack on casing for power input & battery charging in addition to cradle charge
ADAPTABLE END-CAPS	Add to the functionality of the CE5000B by using one of these optional end-caps <ul style="list-style-type: none"> USB END-CAP: head-set adapter and USB-Host connector AUTO-ID END-CAP: Integrated Barcode reader 1D/2D CMOS Imager - with/without GPS and RFID reader (includes head-set adapter and USB-Host connector) 	<ul style="list-style-type: none"> CAMERA END-CAP: 1.3 mega pixel camera and flash with/without GPS & RFID reader (includes head-set adapter) <p>* Refer to official specifications for more details concerning product.</p>
PC CARD & SDIO	<ul style="list-style-type: none"> 1 PC Card Type II & II (CF Card via adapter) 1 Secure Digital (SD or SDIO) slot 	<ul style="list-style-type: none"> User accessible via environmentally sealed cover
EXPANSION I/O	<ul style="list-style-type: none"> 3 serial ports (TTL level) 1 USB Client 1 USB Host 	<ul style="list-style-type: none"> 5 Volt power for external devices Internal, user accessible and environmentally sealed Ideal for OEM Integration
BUNDLED/ AVAILABLE SOFTWARE	<ul style="list-style-type: none"> Microsoft ActiveSync FTP Client/Server CE Internet Explorer and Viewers for Word®, Excel®, PowerPoint® & PDF files Microsoft Outlook® Microsoft Window Media Player® Microsoft Visual Studio 2005® 	<ul style="list-style-type: none"> Terminal Services Client Image & Video Viewer Voice Recorder DAPDUB system allowing: Backup/Restore utilities, OS update utility, automated file transfer & auto recovery system
PERIPHERALS & ACCESSORIES	<ul style="list-style-type: none"> Desktop & Vehicle Battery Chargers Desktop & Vehicle Cradles 	
SIZE & HEIGHT	<ul style="list-style-type: none"> Height: 39 mm (1.53 inches) min / 60 mm (2.36 inches) max Width: 90 mm (3.53 inches) min / 104 mm (4.08 inches) max except for the CE5320B at screen section 	<ul style="list-style-type: none"> Length: 9.74 inches (248 mm) Weight: 1.94 Lbs (880 g) with battery pack
DEVELOPMENT ENVIRONMENT	<ul style="list-style-type: none"> Microsoft® embedded Visual C++® Microsoft Visual Studio® .Net 2003, Visual Studio® 2005 	SDK & DAP Services

[Return To Table of Contents](#)

Introduction

PRODUCT DATA (CONTINUED)

ELECTRICAL & ENVIRONMENTAL REQUIREMENTS	Temperature: <ul style="list-style-type: none"> • Operating: -20°C to + 50°C (-4°F to + 122°F) • Storage: -30°C to +60°C (-22°F to +140°F) • Display refresh cycle may decrease Free Fall Drop Resistance (*): * Might differ when adaptable end-caps are installed <ul style="list-style-type: none"> • Meets and exceeds IEC 68-2-32 method 1 (1 meter drop on concrete) • Meets and exceeds MIL-STD-810F method 516.5 procedure IV (26 drops, 4 feet on plywood) 	Immersion, Rain & Humidity: <ul style="list-style-type: none"> • Meets MIL-STD-810F method 512.4 procedure 1 & IP67 (immersion 1 m) for 30 minutes • Meets MIL-STD-810F method 506.3 procedure 1 (wind blown rain) • Humidity: 95% non-condensing Electrostatic Discharge: <ul style="list-style-type: none"> • Meets EN 61000-4-2
Approvals	<ul style="list-style-type: none"> • FCC Class B • CE Certification 	<ul style="list-style-type: none"> • Class B 21 CFR Chapter 1 Subpart J part 1040.10 (Laser Barcode Scanner) • IEC 60825-1: 1993 + A2 (Laser Barcode Scanner)
Warranty	Manufacturer's warranty: 1 year parts & labor	Optional DAPCare Warranty extension

WARNING / CAUTION / NOTE DEFINITION

The words WARNING, CAUTION, and NOTE carry special meanings and should be carefully reviewed.

WARNING

Alerts the reader about a situation, which if not avoided, could affect the proper functioning of the unit and result in permanent damage to the unit.

CAUTION

Alerts the reader of a potentially hazardous situation, which if not avoided, may result in minor injury to the user or may cause damage to the equipment. This includes special care necessary for the safe and effective use of the device and the care necessary to avoid any damage that may occur as a result of use or misuse.

Note:

This provides special information to make important instructions clearer.

OTHER:

DAP TECHNOLOGIES makes no representation or warranties with respect to the contents hereof and specifically disclaim any implied warranties of merchantability or fitness for any particular purpose. See page 60 for Warranty Statement.

The information in the manuals is subject to change. DAP TECHNOLOGIES reserves the right to update and modify the equipment, its accessories and manuals without notice.

No part of this manual may be copied, distributed, transmitted, transcribed, stored in a retrieval system, or translated in any form or by any means, whether electronically or manually, without the express written consent of DAP TECHNOLOGIES.

[Return To Table of Contents](#)

Symbols



Warning or Caution, pay special attention when this symbol is present.



In accordance with European Directive 2002/96/EC on Waste Electrical and Electronic Equipment (WEEE), this symbol indicates that the product must not be disposed of as unsorted municipal waste, but should be collected separately. Refer to your local distributor for return and/or collection systems available in your country.



Caution must be used when this symbol is present. This symbol indicates a danger for laser radiation.

Safety Precautions

WARNING

- Refer to this Guide when inserting or removing batteries, cables or external peripherals.
- Operate and store your DAP unit within the temperature limits specified in this Guide.
- Do not use any pointed objects on the keyboard, door or mechanisms. Doing so may damage the unit.
- Use the 'Stylus' which has been provided with the unit by DAP Technologies, as it has been designed with a non-abrasive material that cannot scratch or deteriorate the touch screen.
- Never expose the battery to extreme heat or dispose of by burning.
- Any attempts to open the case of a CE5000B unit will void the warranty.
- If you need to use a cable other than the ones provided or recommended by DAP Technologies, we recommend that you contact your Customer Service Representative nearest you.



CAUTION

For CE5000B units with the Laser Barcode Scanner Option:

Avoid Exposure to - Laser radiation emitted from this adaptable Endcap with Laser Option.



[Return To Table of Contents](#)

Quick Tour

FRONT VIEW

- 1. Speaker
- 2. Tab Key
- 3. Cursor Pad
- 4. Blue Key
- 5. Battery Status Indicator
- 6. Shoulder or Belt Carrying Strap Fastener
- 7. Shift Key
- 8. Numeric Keys
- 9. Function Keys
- 10. Power Connector



Quick Tour

BACK VIEW

1. Release screws for PC-Card Access Door
2. Stylus (Pen)
3. Carrying Strap
4. Charging Contacts
5. Release Screws for Battery Compartment (4 total)
6. Battery Compartment
7. Carrying Strap Fastener for Left-Handed Use



[Return To Table of Contents](#)

Getting Started

WARNING

Upon receiving your CE5000B unit, it is strongly recommended that you first charge the batteries prior to use. These following messages are likely to appear due to the length of time the unit was stored. When the battery reaches the low level, the battery status indicator will flash red. The Main Battery field will be highlighted as “Low” under the Battery or Status Tab. It will remain highlighted as long as the battery level is between 6% and 16%.

BATTERY WARNINGS

Main Batteries Very Low

Following several hours of use or storage, the main battery will become very low and this **warning** will appear when there is still some power remaining.

At 5% the battery status indicator continues to flash and a window will display to indicate to the user that the battery is at a critical level and must be re-charged. This warning shall be displayed approximately every 4 minutes for as long as the battery is below 5 %.

It is strongly recommended that the batteries be re-charged immediately to avoid loss of data.

Note: The level at which this warning is to appear can be configured according to preference. Refer to “**Battery Power Management**” for further instructions.

Main Battery Expired

This warning will appear when the power is too low. Turn the unit off immediately and recharge the batteries.

WARNING

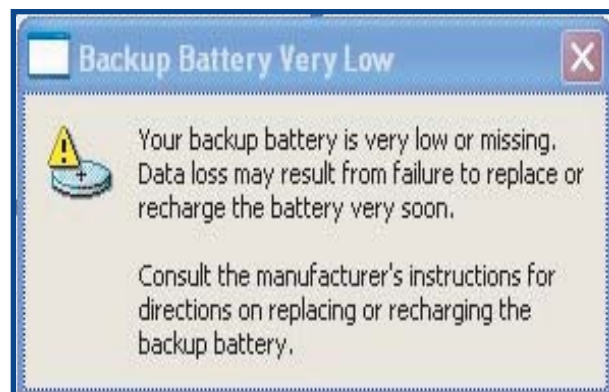
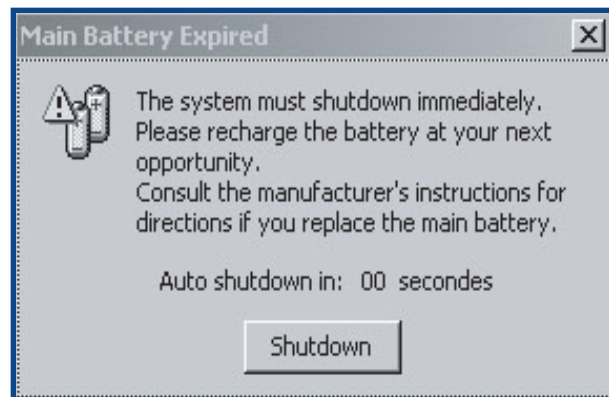
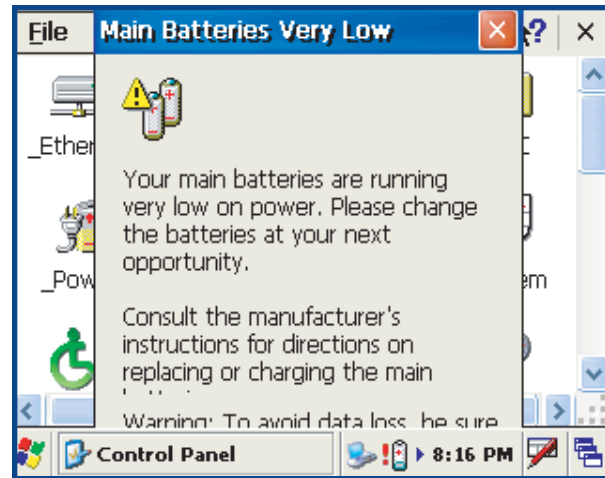
Data may be lost if the unit is not re-charged immediately.

Backup Battery Low

The backup battery will save programs and files in the memory for days. The backup battery is used when replacing the main battery or when the main battery has expired. The backup battery will be re-charged every time the main batteries are charged.

Note: The life of the backup battery will depend on:

- The residual power of the main battery.
- The amount of memory installed in the unit.



Getting Started

CHARGING THE BATTERY

Note: To preserve battery integrity, recharging must only take place when the battery is at a temperature between +5°C (41°F) to + 45°C (113°F). The battery status indicator glows yellow if the battery is too hot or too cold to be charged and the charging system is disabled.

WARNING

Never recharge the unit with the battery removed. The unit may reset and can potentially corrupt any unsaved data.

From the Modular Charger

1. The installation requires the Modular Charger CSCE300-NA (North America - 110V / 120V AC Adapter) or the CSCE300-EU (Europe 220V) or the CSCE300-UK (United Kingdom 220 V).



CSCE300-NA,
CSCE300-EU,
CECE300-UK

2. Insert connector to unit.
3. Connect the Modular Charger to the wall outlet.



Note: The CE5000B Battery Status indicator will turn red in the next 5 seconds indicating that charging is now in progress. The light will turn green when charging is complete. Charging may take up to 5 hours.

Note: If the unit was turned off, it should turn back on after a few seconds or after 2 to 3 minutes if the main battery charge has been very low for some time. Processing will resume exactly where it was interrupted once re-charging starts.



[Return To Table of Contents](#)

Getting Started

CHARGING THE BATTERY (CONTINUED)

Communication Cradle

1. Cradles are available for office and vehicle use. The installation requires a Modular Charger available from DAP Technologies.



CSCE300-NA,
CSCE300-EU,
CECE300-UK

2. Before charging the CE5000B unit, you must first power up the Communication Cradle.
3. Insert the round connector of the Modular Charger into the round connector at the upper left corner of the cradle.
4. Connect the Modular Charger to the wall outlet.



Note: The CE5000B Battery Status indicator will turn red in the next 5 seconds indicating that charging is now in progress. The light will turn green when charging is complete. Charging may take up to 5 hours.

Note: If the unit was turned off, it should turn back on after a few seconds or after 2 to 3 minutes if the main battery charge has been very low for some time. Processing will resume exactly where it was interrupted once re-charging starts.



Getting Started

CHARGING THE BATTERY (CONTINUED)

External Battery Charger

1. You may also use the External Battery Charger to charge the battery. Remove the main battery from the CE5000B unit and insert it into the External Battery Charger. Refer to “Changing the Main Battery “ section for further instructions.
2. Power up the charger using the appropriate AC/DC adapter. The charge indicator (LED) will be red indicating that the battery is charging. The LED will turn green after approximately 5 hours indicating a full charge.



⚠ WARNING

If the charge indicator (LED) flashes, a problem has occurred during the charging or the battery temperature has exceeded its safe charging range of +5°C (41°F) to + 45°C (113°F). Remove the battery from the charger, disconnect the charger for 5 to 10 seconds to remove the error status and try charging again. (If the problem persists, contact a Customer Service Representative nearest you).

Battery Status Indicator

Color	Definition
Red	Charger is connected and charging.
Green	Battery is fully charged.
Blinking Red	Warning, low battery.
Yellow	Charger detected, but the battery charger temperature is too high or too low to re-charge. Charge will start when temperature is adequate.
Blinking Yellow	Charging disabled by the application program.
No Light	Power from the charger is not detected.



[Return To Table of Contents](#)

Operation Guide

TURNING THE UNIT ON & OFF

Once charging is complete, the unit will automatically turn itself off after approximately 9 minutes of inactivity.

Turn Unit On

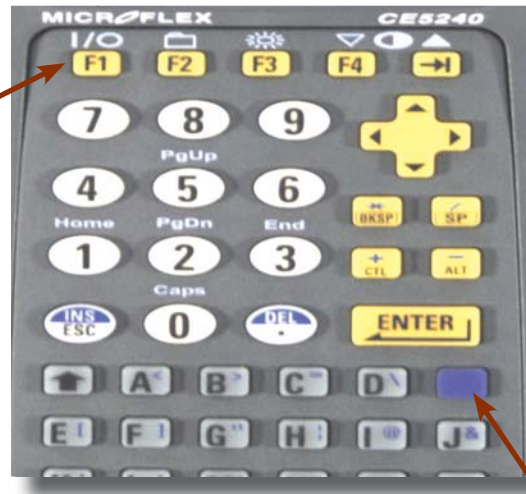
1. To turn on the CE5000B Unit, press on the F1 key for about 2 to 3 seconds.



Note: Should the unit not turn on, the battery might be too low. Refer back to “**Charging the Battery**” Section for further instructions.

Turning the Unit Off Manually

To manually turn off the CE5000B Unit, press the [blue key](#) and the F1 key.



Operation Guide

TURNING THE UNIT ON & OFF (CONTINUED)

Automatic Shut-Off

If the Unit remains inactive for more than 9 minutes, it will turn off automatically in order to save battery. The unit will also save the exact status of your application program and data before shutting down. Simply restart the unit when ready to resume your task where you left off.

Note: When turned off with fully charged batteries, the unit can be stored up to several days without re-charging. Refer to 'Storage and Maintenance' Section for further instructions.

TOUCH SCREEN

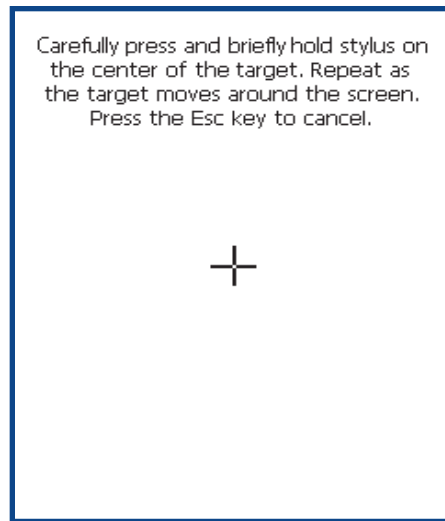
Touch Screen Calibration

The Touch Screen may need to be calibrated upon receiving a new unit or after being stored for a long period of time.

1. Hold your Stylus down until the Cross begins to move.
2. Touch the center of the Cross for a few seconds. Repeat operation as Cross moves to another location.

Note:

At any time, you can press Shift + F2 to display the Touch Screen Calibration Menu.



Using the Touch Screen

1. To use the touch screen, simply use the Stylus provided with the Unit.

⚠ WARNING

Apply normal pressure when using the Touch Screen. Excessive pressure may permanently damage the screen and hinder performance.



Operation Guide

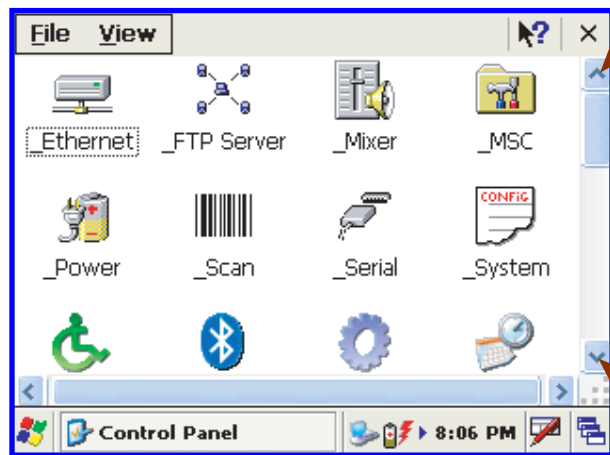
TOUCH SCREEN (CONTINUED)

Using the Touch Screen (Continued)

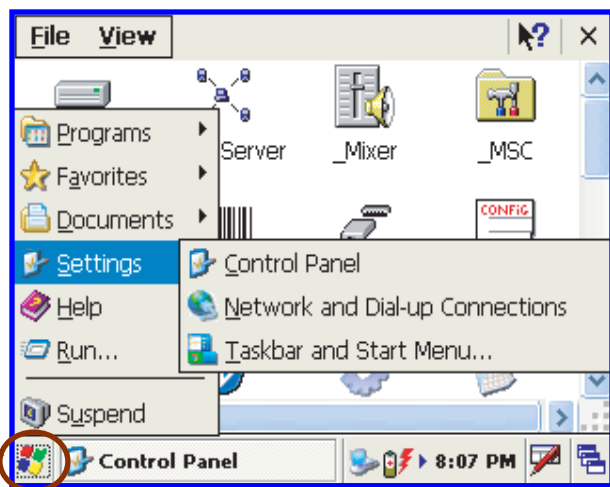
1. By using the Stylus provided, move files or folders by “dragging and dropping” into the folder of your choice.
2. To open a folder, double click with Stylus on the desired folder.
3. To run a program, double click with Stylus on the desired program.



4. To see more objects, use Stylus to slide scroll bar up or down, or click on the up or down arrows from the scroll bar.



5. To display additional programs or access Control Panel, go to the **Start** Button located at the bottom left of the screen.



Operation Guide

USING THE KEYBOARD

Multi-Key Entry

You may need to press more than one Key to obtain a special character or a special function.

The 'SHIFT', CTL, ALT and BLUE Keys are keys that can precede a letter or a digit to modify its original value.



1. Press the keys one after the other, releasing the previous key prior to pressing a subsequent key.

or

2. Press keys together using 2 or more fingers.

Note: The Color coding simplifies the use of the keyboard. The Blue Key must be pressed first to obtain a blue character on the screen.

Digit & Letter Keys

To generate a character either as an alpha (letter) or numeric (digit) value, press the key corresponding to the desired letter or digit.

Note: Letters are set by default at 'lower case'.

Auto-Repeat

A character will repeat if a key is pressed for more than 1 second. It will stop once key has been released.

Upper Case

1. To generate an upper case letter, press the **shift** Key  once followed by the letter.


2. To generate a series of upper case letters, press the Blue Key (also indicated by 'Caps' in blue). This will simulate the 'Caps Lock' function on a conventional computer keyboard.



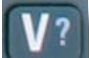


Operation Guide

USING THE KEYBOARD (CONTINUED)

Punctuation & Special Symbols

1. To enter punctuation marks or special typographic symbols, press the Blue Key  followed by the letter marked with the desired symbol in blue.

2. To generate a  press  + 

Function Keys

(F1 to F4)

Function Keys are used to directly access specific functions to the application being used in unit. Some 'Function' Keys are already used by the Operating System. Refer to the Table below for the definition of the Function Keys.

Function Key	Definition
F1 to F4	These functions can be used for direct access to your application program, please refer to your supervisor or the application specialist for further instructions
F1	Pre-Programmed for communication Refer to ActiveSync Communication Section for further Instructions
SHIFT+ F2	Starts the Screen Calibration Menu
SHIFT + F3	Will display BlueTooth Manager
Alt + Tab	Will display Task Manager

Note: These pre-defined functions are available with the initial configuration of the CE5000B unit. These may be disabled or associated with other function keys from your application.

Advanced Users: Refer to "DAP Technologies Technical Support Web Site" for complete instructions about viewing or changing these Function Keys.

ACTIVATING THE SCREEN & KEYBOARD BACKLIGHT

Every unit has been designed to work in low-light environments and have been equipped with a "Backlight" that can be activated at any time.

1. To activate the Backlight, press the Blue Key followed by the F3 Key.



2. The two same functions will also turn off the **keyboard** backlight.

Note: The Backlight will normally turn itself off after approximately 45 seconds if unit is left inactive. The backlight option can also drain the batteries quicker. Use only when necessary.

Operation Guide

USING THE KEYBOARD (CONTINUED)

Virtual Keyboard

The virtual keyboard has been included to assist in the entry of data. By clicking the Keyboard icon at the bottom right of the Task Bar, the virtual keyboard will be displayed on the screen.

- Select **“Hide Input Panel”** to hide the Virtual Keyboard.




Operation Guide

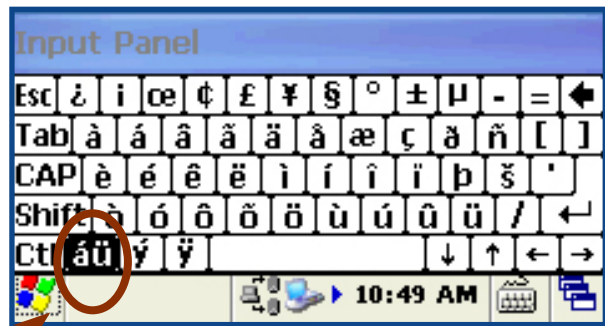
USING THE KEYBOARD (CONTINUED)

Virtual Keyboard (Continued)

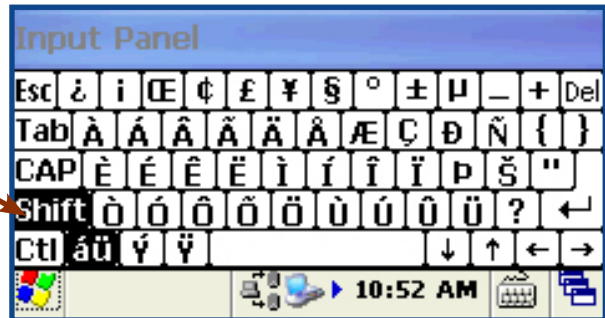
1. Standard Keyboard



2. Press  to toggle between the standard and extended language Keyboard.



3. Press the **Shift** Key on the virtual Keyboard to access additional characters.



Operation Guide

USING PC CARD

Note: It is not necessary to shut the unit off prior to inserting, removing or replacing a PC card.

WARNING

The Application may not allow the insertion of a PC Card while it is running. Refer to your Supervisor, the application provider or a DAP Technologies Representative for further instructions.

Inserting PC Cards

1. Using a Flathead Screwdriver loosen the two screws located on either side of the PC Card Door.

Note: The screws will remain inside the door.

2. Pull the door slowly and place to the side. The flexible strap will hold the door so it remains attached to the side casing.

3. To insert a PC Card, slide it gently into the socket. Once inserted completely, the PC Card will lock into place (you will hear a 'click') and the release button will pop up.

4. Replace the door to its original position and tighten screws.



WARNING

- Installing PC cards is **not** recommended when Adaptable Endcap is installed.
- Ensure to place PC Card as indicated on the right or you may damage the unit or PC Card.
- Insert PC Card in a clean and dry environment to ensure no dust particles or water enters the unit.
- Ensure PC Card is inserted properly prior to closing the door or you may damage the unit.

[Return To Table of Contents](#)

Operation Guide

USING PC CARDS (CONTINUED)

Removing PC Cards

1. Using a Flathead Screwdriver, loosen the two screws located on either side of the PC Card Door.

Note: The screws will remain inside the door.



2. Pull the door slowly and place to the side. The flexible strap will hold the door so it remains attached to the side casing.



3. To remove the PC Card from the unit, press the **'release button'** located to the right of the PC Card opening.
4. Replace the door to its original position and tighten screws.



Operation Guide

SDIO CARDS

Note: It is not necessary to shut the unit off prior to inserting, removing or replacing a SDIO Cards.

WARNING

The Application may not allow the insertion of a PC Card while it is running. Refer to your Supervisor, the application provider or a DAP Technologies Representative for further instructions.

Inserting SDIO Cards

1. Using a Flathead Screwdriver, loosen the two screws located on either side of the adaptable endcap.

Note: The screws will remain inside the endcap.

2. Pull the door slowly and place to the side. The flexible strap will hold the door so it remains attached to the side casing.
3. Remove plastic stopper using fingers and the Stylus. (Press in the center of the stopper with Stylus and gently pull upwards).

Note: Do not discard stopper, it must be placed on SDIO card once installed to secure it in place.

4. Insert SDIO Card and replace stopper.
5. Replace Endcap and tighten screws.



WARNING

- Inserting SDIO cards is **not** recommended when Adaptable Endcap is installed.
- Ensure to place SDIO Card as indicated on the right or you may damage the unit or Card by inserting inappropriately.
- Insert SDIO Card in a clean and dry environment to ensure no dust particles or water enters the unit.
- Ensure SDIO Card is inserted properly prior to closing the door or you may damage the unit.

[Return To Table of Contents](#)

Operation Guide

SDIO CARDS (CONTINUED)

Note: It is not necessary to shut the unit off prior to inserting, removing or replacing SDIO Cards.

WARNING

The Application may not allow the insertion of a SDIO Card while it is running. Refer to your Supervisor, the application provider or a DAP Technologies Representative for further instructions.

Removing SDIO Cards

1. Using a Flathead Screwdriver, loosen the two screws located on either side of the adaptable endcap.

Note: The screws will remain inside the Endcap.



2. Pull the door slowly and place to the side. The flexible strap will hold the door so it remains attached to the side casing.



3. Remove plastic stopper using fingers and the Stylus. (Press in the center of the stopper with Stylus and gently pull upwards).



4. Slide SDIO Card upwards to remove.

Note: Do not discard stopper, it must be placed on SDIO card once installed to secure it in place, therefore slide stopper back into position for future use.



Operation Guide

USING THE CRADLE

Note: For instructions regarding the installation and configuration of all the different types of cradles available for your CE5000B unit, refer to the Technical Guide available on the DAP Technologies Technical Support Web site. Refer to 'Advanced User Information' for instructions on logging onto the Customer Service Web Site.

The Technical Guide will provide information on the following Cradles:

Office Cradles	
Cradle Code	Description
CBCE540BE	Charge & Communication (Ethernet) * Only Compatible with CE5000B with Ethernet Option
Vehicle Cradles	
Cradle Code	Description
CBCE540BVC	Charge only
CBCE540BV1	Charge & Communication (Ethernet to Serial Port Converter) * Only compatible with CE5320 & CE5240 with Ethernet Option

Note: The Ethernet Cradle (CBCE540E) being the most popular, some basic information follows.

Using the Ethernet Cradle

1. To activate the Ethernet Cradle, you must first connect a CSCE300 charger to the cradle.
2. Connect the RJ-45 network cable to the cradle.



3. Slide the unit into the cradle.
4. Connect power cable to wall outlet.



[Return To Table of Contents](#)

Operation Guide

USING THE CRADLE (CONTINUED)

Using the Ethernet Cradle (Continued)

1. Ethernet Adapter is activated and linked to the Network. It is ready to be used by a User or Windows Application.



2. This blinking icon indicates that a connection is established with the network and data is being transferred.



3. The following icons indicate that the FTP Server is running. By default, server starts automatically when a network connection is established.



TRANSFERRING FILES IN FTP MODE

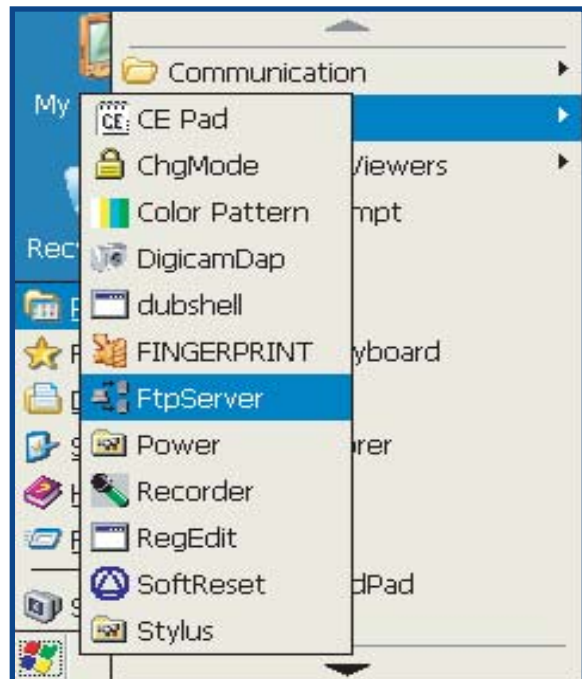
The CE5000B unit includes an FTP Server access which makes transferring files easy and does not require the use of ActivSync.

1. Insert the CE5000B unit into the Office Cradle.

Note: Once unit is inserted this will automatically activate the FTP server. If the FTP server does not activate automatically, follow the steps below.

2. Click on:

- a) Start
- b) Program
- c) DAP Utilities
- d) FTP Server



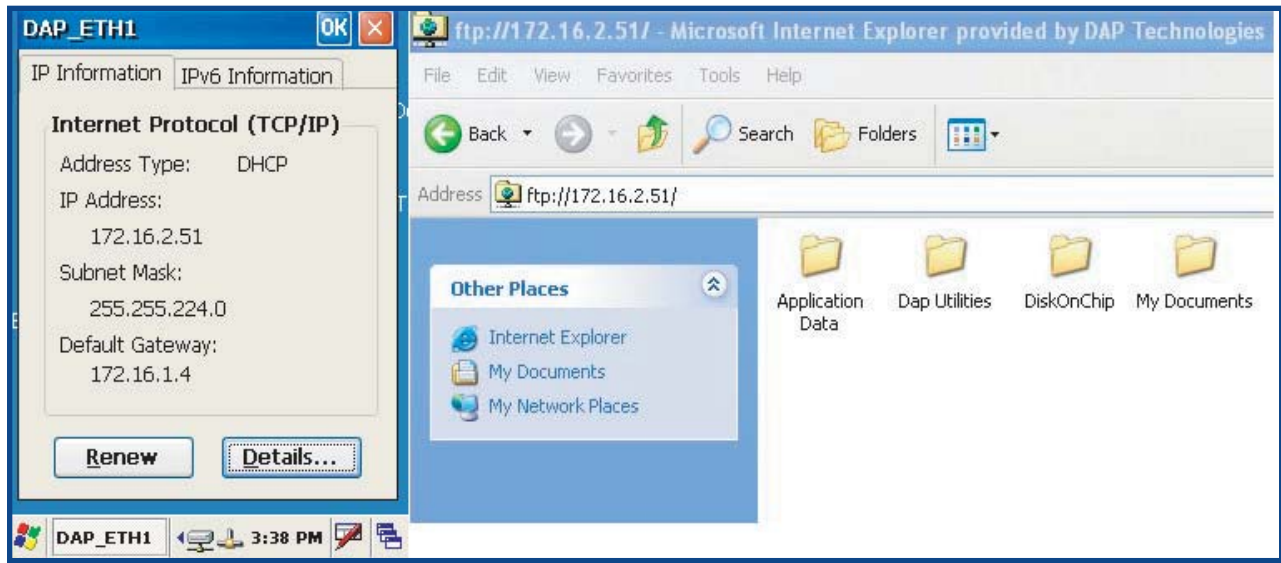
Operation Guide

TRANSFERRING FILES IN FTP MODE (CONTINUED)

3. Open Internet Explorer on your Desktop Computer then type:

FTP:// <your CE5000B IP address>

i.e.: FTP://192.168.2.34



4. The contents of your CE5000B unit will appear. Simply use the conventional '**Drag and Drop / Copy / Delete**' functions to manage its contents.

Operation Guide

WIRELESS & BLUETOOTH OPTIONS

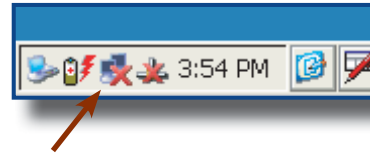
Using Wireless

To set wireless options, click on:

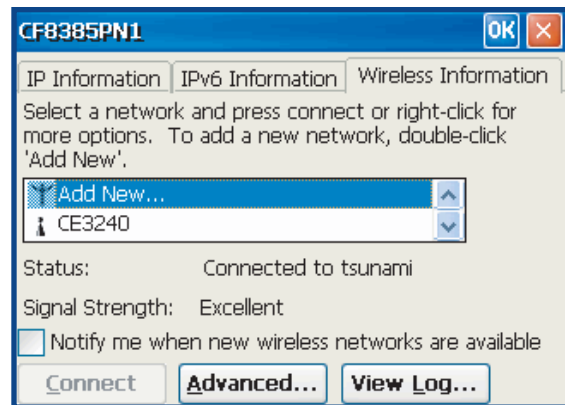
1. Start
2. Settings
3. Control Panel
4. _Wireless
5. Check to activate or un-check the options to deactivate these features.



6. Double-click on the network applet in the Task Bar.
7. Select Wireless information tab.



8. Choose the desired network connection.

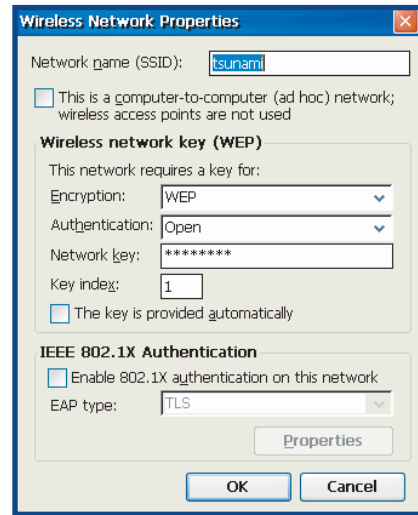


Operation Guide

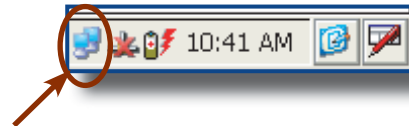
WIRELESS & BLUETOOTH OPTIONS (CONTINUED)

Using Wireless (Continued)

9. To configure the network connection, double click on the desired access point.



10. Once network connection is established successfully, the network applet will display as active.



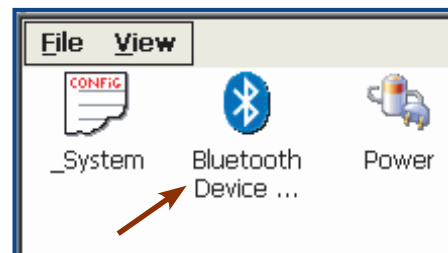
Using Bluetooth

To set wireless options, click on:

1. Start
2. Settings
3. Control Panel
4. _Wireless
5. Check to activate or un-check the options to deactivate these features.



6. Return to Control Panel
7. Select Bluetooth Device



[Return To Table of Contents](#)

Operation Guide

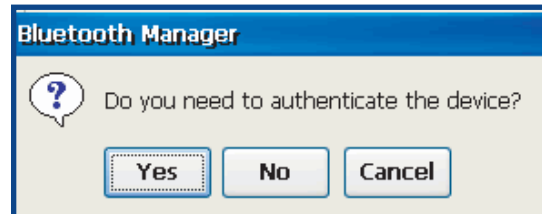
WIRELESS & BLUETOOTH OPTIONS (CONTINUED)

Using BlueTooth (Continued)

8. Use this applet to locate peripheral or delete Bluetooth partnership.
9. Click on Scan to locate peripheral.



10. Authentication might be required, refer to your supervisor for authentication and identification codes.



11. Once authentication is completed, the device will be active.



Adaptable Endcap Options

Part Number	Description
CE5B-CAM00	Camera 1.3MP with Flash
CE5B-CAM10	Camera 1.3MP with Flash & GPS
CE5B-FLX01	LEMO connector
CE5B-GPS00	GPS, USB Host & Headset
CE5B-IMG00	1D/2D Barcode Reader
CE5B-IMG10	1D/2D Barcode Reader & GPS
CE5B-LAS00	1D Laser Scanner
CE5B-LAS10	1D Laser Scanner & GPS
CE5B-USB11	USB Host Connection & Audio Jack



Adaptable Endcap Options

BARCODE READERS

Laser Scanner

The 'Laser Scanner' function will depend on the application used and a special software driver. Refer to your application's User Guide for further instructions. Information included are basic scanning instructions.

Refer to the diagram to the right for right and wrong scanning methods.

Testing the Laser Scanner

1. To test the Laser Scanner, click on:
 - a) Start
 - b) Program
 - c) DAP Utilities
 - d) CE Pad
2. To activate scanner, point the top of the unit toward the barcode label needed to be scanned.
3. Press the 'SCAN' (F3) Key and move the unit back and forth so the beam completely crosses the label.



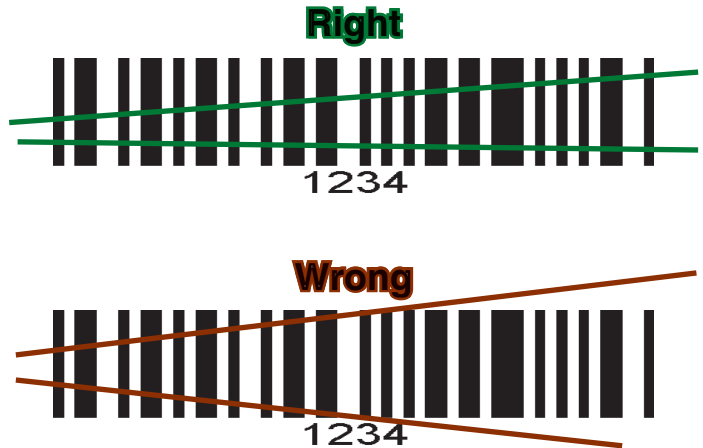
4. Once the label has been decoded, the unit will sound a short 'beep'.

Note: If you keep the F3 button pressed for too long, the unit will stop scanning by itself after a few moments. The unit will sound two (2) beeps to indicate that no barcode has been detected.

Advanced Users: Refer to the CE5000B Technical Guide for further instructions on programming.

CAUTION

- Avoid Exposure to Laser Light Beam.
- Do not intentionally look into the Laser Light Beam.



Adaptable Endcap Options

BARCODE READERS (CONTINUED)

2D Barcode Reader

This special option is usually installed and configured in-house at the manufacturer's.

The 2D Barcode Reader is primarily controlled by the client application and a special driver. Therefore, please refer to your application specialist or supervisor for further instructions.

Note: You may also refer to the CE5000B Technical Guide located on DOCUDAP for further instructions on programming.

Testing the Reader

1. To test the reader, click on:
 - a) Start
 - b) Program
 - c) DAP Utilities
 - d) CE Pad
2. Hold the unit steadily at a distance of 10 cm (4 in), from the barcode
3. To activate reader, press the F3 Key.



WARNING

Do not move the unit while reading or unit will not be able to read barcode.

Note: Unlike the laser scanner, the 2D reader does not “swipe” the barcode, but rather, it takes a reading much like a “photograph” which is then recognized and interpreted by the unit. Reading a barcode can be taken from any angle.

The 2D Barcode Reader will emit a red beam allowing the user to adequately focus on the barcode needing to be read.

Once the reading has been completed, the device will emit a sound. The numeric code will then be displayed on the screen.

You can release the trigger at any time to cancel the reading.

Adaptable Endcap Options

GPS

This special option is installed by DAP Technologies.

GPS (Global Positioning System) is a “constellation” of 24 well-spaced satellites that orbit the Earth and make it possible for people with ground receivers to pinpoint their geographic location. The location accuracy is anywhere between 100 to 10 meters for most equipment.

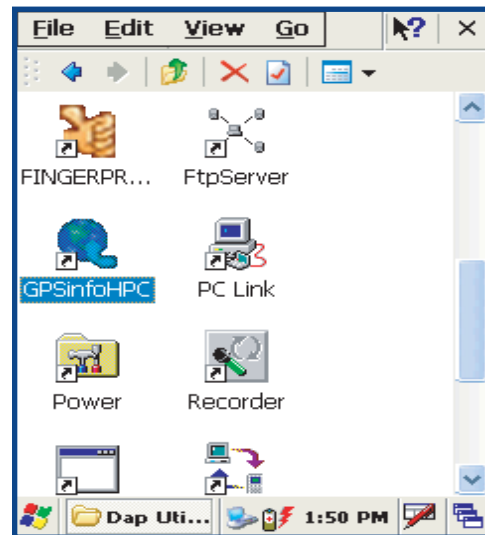
Note: This device **does not** provide navigation utilities or software and is usually controlled by the client application or software. Contact your application specialist or supervisor for further instructions for use.

Testing the GPS

1. Position unit at a 45° angle.



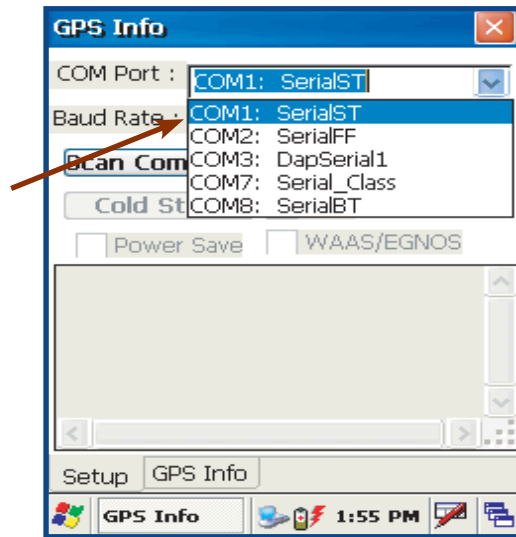
2. Click on:
 - a) Start
 - b) My Device
 - c) DAP Utilities
3. Double-click on **GPSinfoHPC** to start.



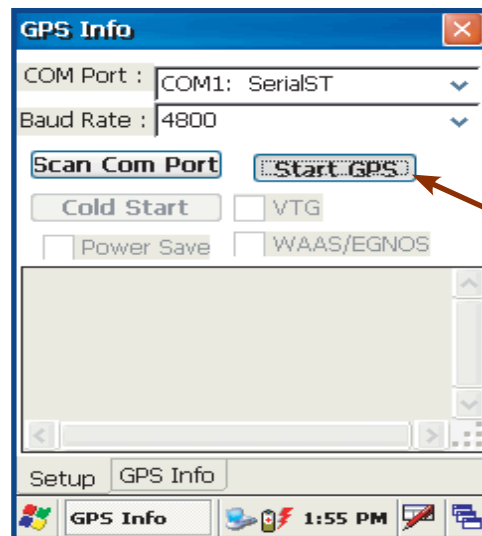
Adaptable Endcap Options

GPS (CONTINUED)

4. Select COM Port: **COM1: SerialST**



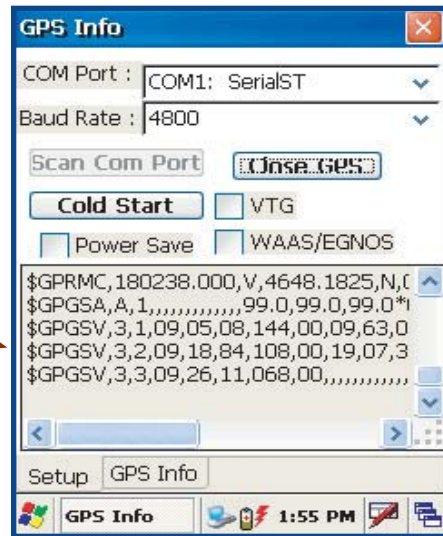
5. Click on "Start GPS"



Adaptable Endcap Options

GPS (CONTINUED)

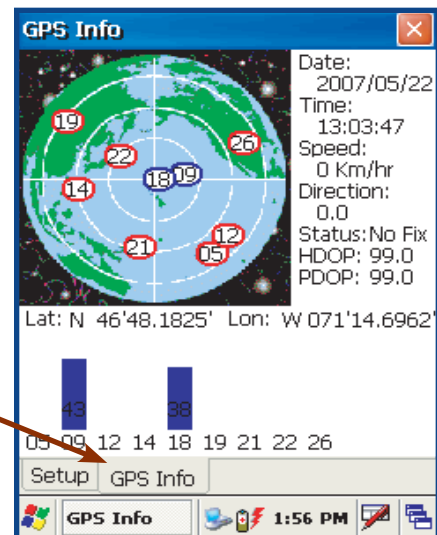
- The following data stream indicates that the GPS is identifying the location.



- Click on **GPS Info** Tab for coordinates.

Note: If the unit has just been re-started, it could take up to a few minutes to obtain the location coordinates.

Note: Location will be provided using longitude and latitude coordinates



Adaptable Endcap Options

CAMERA WITH FLASH

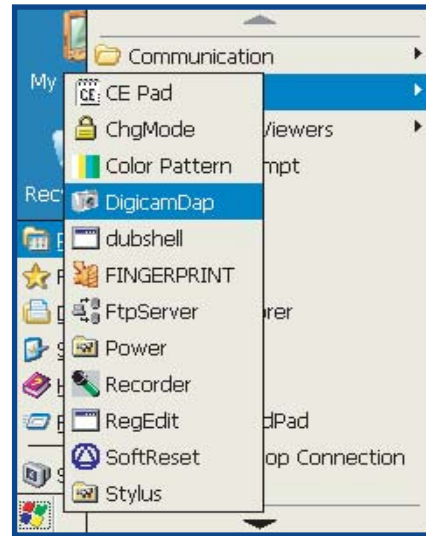
The camera with flash will allow to photograph indoors, outdoors or in darker areas. While in darker areas, activate flash prior to taking a photograph.

Note: This device is installed by DAP Technologies and is controlled by the client application or software. Contact your application specialist or supervisor for further instructions for use. Below are basic instructions to validate functionality.

Testing the Camera

1. Click on:

- a) Start
- b) Programs
- c) DigiCamDap



2. A preview window will display to visualize the area to photograph. Center image in window prior to photographing.

3. Click image to photograph.

4. Once photograph is taken, it will be saved by default in the **TEMP** folder.

5. Drag and drop to folder of choice.



Adaptable Endcap Options

LOW FREQUENCY RFID

RFID is short for **R**adio **F**requency **I**dentification, a technology similar to bar code identification. This system consists of an antenna and a transceiver which read the radio frequency and transfers the information to a processing device, a transponder or "tag". These systems can be used just about anywhere from clothing tags to missiles to pet tags to food --- anywhere that a unique identification system is needed.

The RFID option can read several different identification tags at a distance of approximately 5 to 10 cm (2 to 4 in) however, the distance at which the unit may read will depend on the size and type of the tag.

Note: This device is usually installed in-house at the manufacturer's and is controlled by the client application or software. Contact your application specialist or supervisor for further instructions for use.

HEADSET

The Headset adapter comes standard on all Adaptable Endcaps. This option provides the following:

- a) To hear the clicks and sounds of the keyboard
- b) To record messages
- c) or to listen to instructions

Note: The CE5000B unit will support Mono Headset adapters. (Headsets that are usually compatible with Cellular telephones).



USB HOST

The USB Host comes standard on all Adaptable Endcaps.

Note: This device is controlled by the client application or software. Contact your application specialist or supervisor for further instructions for use.

This option allows to connect any USB Key, USB Keyboard or USB mouse and most digital cameras. Any other peripheral will require a USB driver (**not provided**).

Advanced Settings

ADVANCED BATTERY OPTIONS

To See Power Remaining

1. Under Windows CE 5.0, click on:
 - a) Start
 - b) Settings
 - c) Control Panel
 - d) Power
 - e) Battery

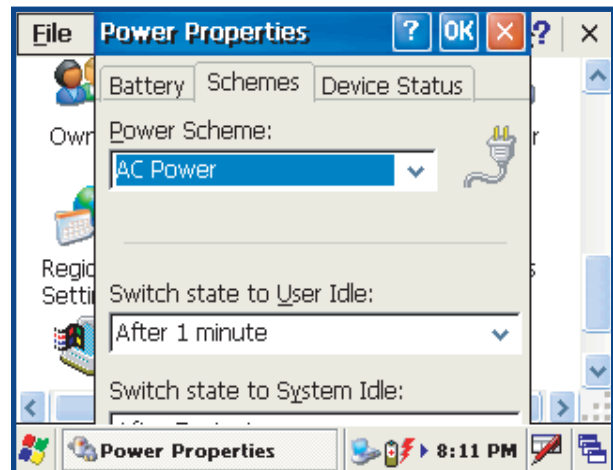


Preserving Power

It is possible to extend battery life by modifying the power delays of the unit, screen and backlighting settings.

To configure power settings:

1. Click on the “Schemes” Tab.
Note: Move Scroll bar up or down, or click the up or down arrows to see the entire menu.



Battery Power Management

All CE5000B units are delivered with a calibrated Main Battery.

1. To setup the screen and backlight delays, click on:
 - a) Start
 - b) Settings
 - c) Control Panel
 - d) _Power
 - e) Power Off
2. Define “Low Level” & “Very Low Level” as per your selection and applications used.

Note: The default settings are 16% for “Low Level” and 5% for “Very Low”.



[Return To Table of Contents](#)

Advanced Settings

BACKGROUND DISPLAY AND CONTRAST ADVANCED SETTINGS

The Screen display has been configured to ensure lighting is optimized in all possible environments and conditions. However, in extreme conditions and outside the normal temperature range of -20°C to +50°C (-4°F to + 122°F), manual readjustment might be necessary.

In extremely low temperatures, press the Blue Key



followed by the Tab Key



ACTIVESYNC COMMUNICATION

Using the Microsoft ActiveSync communication, it is possible to transfer files between a desktop computer and the CE5000B unit. Communication is possible through the serial port or USB client.

Note: With Microsoft Outlook 2002 or later, it is also possible to synchronize information between the desktop computer and the CE5000B unit.

ActiveSync Setup

Note: ActiveSync Client is already installed on the unit and the “ActiveSync Host” must be setup on the desktop computer in order to function. If the host is not installed on the desktop, follow the instructions below.

1. Download the latest version of the Microsoft ActiveSync Software from one of the following sites:

- a) From the **Microsoft Web Site**
- b) From **DAP Technologies Customer Support Web Site @ www.daptech.com**

Note: It is strongly recommended to use ActiveSync 3.8 or higher.

2. Once download is complete, launch the ActiveSync “**Install**” program. A screen will appear prompting you to Setup Microsoft ActiveSync Program.

3. Click **Next**

4. A screen will appear prompting you for what folder to save the program. The **default folder** is recommended.

5. Click **Next**

6. Once installation is completed, click “**Finish**”. If prompted “Create Partnership between Desktop and CE Device”, Click “**Cancel**”.

7. Once the installation has been successfully completed, the ActiveSync Applet will be displayed on your desktop and an icon will be added to your Task Bar. (The Software program will also be available through the Start Menu).

WARNING

Do not connect your CE5000B unit until the installation has completed.

Advanced Settings

PARTNERSHIP WITH ETHERNET CRADLE

Note: The “Ethernet Partnership” is only possible with ActiveSync 3.7 or 3.8.

The Ethernet connection requires the use of a cradle model # CBCE540BE and an Ethernet cable connected between the cradle and your network. Refer to the “**using the Cradle**” section for further instructions.

An initial Ethernet connection normally requires a “Partnership” with your “Host” computer using a serial or USB port. DAP Technologies has made these following programs available to assist in the creation of the “Ethernet Partnership” when using the Ethernet cradle:

- SetPartnerShip.exe (Already installed on the CE5000B unit)
- PartnerShip Server.exe (This program must be downloaded)

Download PartnerShip Server.exe

1. Go to <http://www.support.daptech.com>
2. Refer to CE.NET PUBLIC DOWNLOAD
3. Copy to a folder that will be easily accessible; e.g. Desktop Folder.

Create first Ethernet partnership

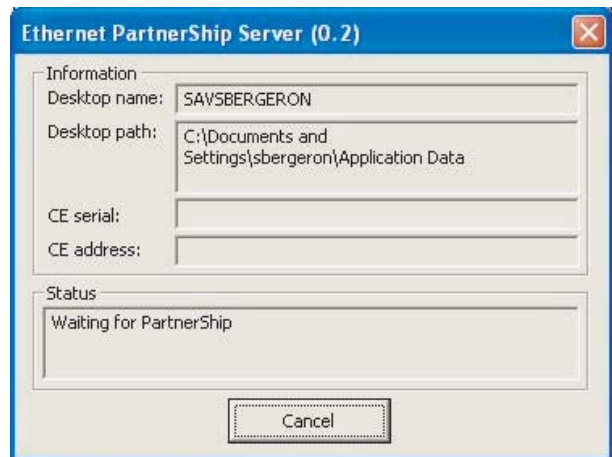
1. Install the CE5000B unit into its Ethernet Cradle and wait until the network has been detected.



Click on arrow to see more icons if network icons are not visible.

Network connection is established.

2. Launch **PartnerShip Server.exe** on the Host computer.



[Return To Table of Contents](#)

Advanced Settings

PARTNERSHIP WITH ETHERNET CRADLE (CONTINUED)

3. To establish PartnerShip, click on:

- a) Start
- b) Communication
- c) Set PartnerShip

4. The Ethernet PartnerShip should be established within a few seconds.

Note: This procedure needs only to be done once to create the first "PartnerShip".

5. To launch ActiveSync, click on:

- a) Start
- b) Program
- c) Communication
- d) ActivSync

Note: For subsequent connections, simply follow step 5 to start ActiveSync.

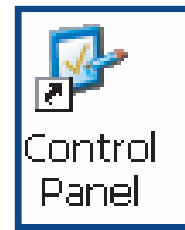


Advanced Settings

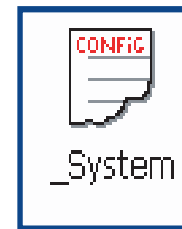
ADVANCED USER INFORMATION

To obtain the most current technical information on your CE5000B unit, you must first register your unit @ [DocuDap Technical Web Site](#).

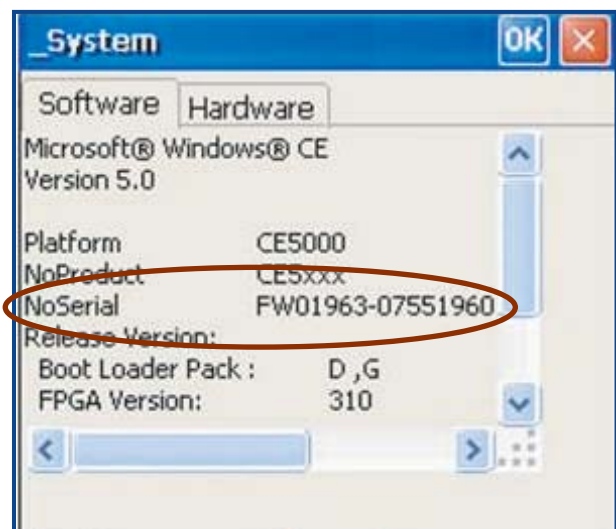
1. Click on Control Panel.



2. Click on the _System Applet.



3. From this _System Applet Window, note the 16 digit serial number.



4. Start your Internet Browser.

5. Go to:
<http://www.daptech.com/DocuDap>

Advanced Settings

ADVANCED USER INFORMATION (CONTINUED)

6. Click on **“Register a Serial number or Access Code”**.

Username:

Password:

[Register a serial number or access code](#)

[Forgot your Password?](#)

7. Enter your CE5000B unit's serial number noted earlier.
8. Enter a valid Email address and your user information and password will be forwarded to you.

DocuDap PARTNER ZONE

Enter your serial number or access code:

[← Back to DocuDAP login](#)

Serial: -

Email:

If you are experiencing difficulties, please contact DocuDAP@daptech.com for assistance.

9. Return to DocuDap Login and enter the information that was provided to you and click **“Submit”**.
10. You may now surf the Technical Web Site for more technical and advanced user information.

Username:

Password:

[Register a serial number or access code](#)








[Forgot your Password?](#)

Companion Programs

This section lists several programs that are included with the CE5000B unit and provides a brief description of their functions. However, **Not all programs are covered.**





It is **not** the intent of this User Guide to describe the applications included. Please refer to [DAP Technologies Technical Web Site](#) for further instructions on DAP Technologies programs included or the [Microsoft Web Site](#) for Microsoft Programs included.

DAP CE5000B PROGRAMS



Icon	Name	Definition
	CE Pad	A Small Test Editor.
	Color Pattern	To verify color screen quality.
	Power Remaining	Display Power Applet.
	Soft Reset	Reset the unit. The supervisor mode is required.
	Recorder	Allows you to playback wave files and recorded messages.
	Change Mode	Switch between the User and Change mode.
	Digicam	Camera Utility.

Companion Programs

MICROSOFT PROGRAMS

Icon	Name	Definition
	Inbox	Send and receive Emails by synchronizing Desktop with CE5000B unit.
	Microsoft Viewer Suite	Will display Excel files, images, PDF, PowerPoint and Word files.
	Internet Explorer	Surf the Web by synchronizing pages with desktop computer or by connecting to Internet.
	Media Player	Play music or video files.

Troubleshooting Guide

Problem / Failure	Recommended Action
<p>Low Battery Messages on the Main Battery.</p>	<ol style="list-style-type: none"> 1. Still some power remains but it is recommended that you replace the battery before Data is lost.
<p>If neither of these 2 icons appear in the Task Bar when using Ethernet Cradle.</p> <div style="text-align: center;">  </div>	<ol style="list-style-type: none"> 1. Verify Network cable is connected on the back of the cradle. 2. Verify Network cable is not defective. 3. Ethernet on-board adapter may be deactivated or in Power Save Mode.
<p>The screen is blank and keyboard does not sound the 'beep' when a key is pressed.</p>	<ol style="list-style-type: none"> 1. Verify that the unit is turned on. 2. Verify that the battery is fully charged.
<p>The unit does not turn on when pressing the F1 key.</p> <div style="text-align: center;">  </div>	<ol style="list-style-type: none"> 1. Verify batteries --- batteries may need re-charging. Once unit is placed on the charger, the unit should turn itself on in the next few seconds and re-start the operating system.
<p>The PC Card does not connect.</p>	<ol style="list-style-type: none"> 1. Verify that the PC Card is inserted properly. Refer back to "Using PC Cards" section for further instructions.
<p>The display contrast is very weak or background very dark.</p>	<ol style="list-style-type: none"> 1. Verify the display contrast settings are appropriately set. Use the contrast keys to adjust the settings. (Refer to "Background Display and Contrast Advanced Settings" for further instructions.
<p>The unit does not turn off automatically or manually.</p>	<ol style="list-style-type: none"> 1. Verify unit is properly connected to the charger. 2. Verify "shutoff" feature is properly configured.

Storage & Maintenance

The CE5000B Unit is a reliable product requiring little maintenance. Only occasional replacement of the battery and the carrying strap is required.

WARNING

There are no user-serviceable parts inside the CE5000B Unit. Do not try to repair the unit as this may affect proper functioning as well as **void** the warranty.

STORAGE

- If the unit is not going to be used for a few days or more, it is recommended to keep the unit directly on the charger.
- If the unit is not going to be used for a few weeks, it is strongly recommended that the unit be fully charged and stored in a location where the temperature will be between +20°C (+68°F) to +25°C (+77°F).
- If the unit has been stored for a long period of time, recharge the battery completely prior to use.

WARNING

- If extended storage time is necessary, it is important to backup all data to ensure no data is lost or corrupted.
- Keeping the unit on the Charger is also possible, however, this may affect the battery life and capacity over time.

CLEANING

Use a normal soft cloth and mild soap to clean the CE5000B unit. Do not use abrasives as these cleansers may damage the finish and scratch the touch screen. Ensure that all compartments are properly closed prior to cleaning unit.

SHIPPING THE UNIT

The CE5000B units have been designed to withstand vibrations and shocks that can occur during normal use of the product. However, should shipping one of these units be required, it is strongly recommended that these be packaged in the same packaging the unit was delivered in, or similar packaging to avoid any damage to the units during transportation.

CARRYING STRAP

To clean the strap, simply use a mild soap and a normal soft cloth. If there is extensive wear on the strap, it may be time to change it.

Storage & Maintenance

BATTERY MAINTENANCE

Main Battery

The high-quality Lithium-Ion battery provided with your unit may be re-charged over 500 times according to the battery manufacturer.

Note: If the battery's duration does not last the normal time-frame specified, it may be time to change it. The main battery should last from 12 to 24 months if used under normal working conditions.

Backup Battery

The Backup Battery will normally not need to be replaced during the expected life of the CE5000B unit. Re-charge as specified after use.

Replacing the Battery

Note: Always turn the unit off before removing the battery. The CE5000B unit uses an approved battery to ensure a quicker charging time, longer battery life and resistance to shock and vibrations. To ensure that the batteries are appropriate for use on DAP Technologies equipment, it is strongly recommended that these be purchased directly through DAP Technologies or one of its distributors. (Check for the DAP or DAP Technologies logo on the battery).

1. Turn off the CE5000B Unit. (Refer to "Turning the Unit Off Manually" Section for further instructions).

2. Using a small Flathead Screwdriver, remove the 4 screws.



3. Remove battery.



[Return To Table of Contents](#)

Storage & Maintenance

BATTERY MAINTENANCE (CONTINUED)

Replacing the Battery (Continued)

4. Replace the battery inserting the left side first. Align the arrow on the battery toward the right side.

Right Side



Left Side

5. Place foam over the battery to ensure a tight fit.



Storage & Maintenance

TOUCH SCREEN MAINTENANCE

The Touch Screen requires minimal maintenance. Only appropriate care when using and cleaning the Touch Screen is required. Use the Stylus provided with the unit when using the Touch Screen to ensure other pointed devices do not damage the screen. When cleaning, ensure to use a mild detergent and soft cloth.

WARNING

- Do Not use abrasives as these may damage the finish and scratch the Touch Screen.
- Replace or clean the Stylus as soon as it seems damaged or dirty.

ADAPTABLE ENDCAP WITH LASER OPTION

Note: The efficiency of the Laser reading will depend on the quality of the plastic window. Any scratch, dirt or finger prints will degrade the reading quality.

1. Clean Adaptable Endcap using a mild detergent and soft cloth to ensure no scratches to the window. (A plastic lens cleaner can also be used for cleaning the window).

QUICK-REFERENCE REPLACEMENT PARTS LIST

Part Description	Part Number
Lithium-Ion Battery	DC800
Carrying Strap	DC801
Stylus (Pen), 5 units per package	DCCE500

Recycling Passport

CE5000B UNIT



The Waste Electrical and Electronic Equipment Directive (WEEE) is a European directive established in 2003 for the collection, recycling and recovery targets for all types of electrical goods.

This European Directive imposes the responsibility for the disposal of waste electrical and electronic equipment on the manufacturers of such equipment.

In accordance to this directive, DAP Technologies will assist you in the proper disposal of your DAP Units.

For further instructions on how to dispose of these units, please refer to our web site:

www.daptech.com



CE Conformity

The CE5240B, CE5240BW, CE5320B & CE5320BW have been tested and are in compliance with the 89/336/EEC European Directive for Electromagnetic Compatibility.

Electromagnetic Emissions & Electromagnetic Immunity

Standards	Definition
EN 55022 (1998)	Conducted, Class B
ENV 50204 (1995)	Radiated Electromagnetic Field from Radio telephones
EN 61000-4-2 (1995)	Electrostatic Discharge
EN 6100-4-3 (1996)	Radiated and Electromagnetic Frequencies
EN 61000-4-6 (1996)	Conducted Perturbations

When Laser Scanner Option is Installed

CEI / IEC Standard	Definition
CEI / IEC 60825-1 Class 2	Laser Safety Approvals
21 CFR Chapter 1, Subpart J, Part 1040.10	Performance Standards for Light Emitting Products (Class II Laser Product)

US Federal (FDA) Regulation

Standard	Definition
FCC Part 15 (92005) Subpart B	Conducted and Radiated Emissions Class B

RADIO FREQUENCY EXPOSURE REQUIREMENTS (only for models with Wireless WAN)

For body worn operation, this product has been tested and meets FCC RF exposure guidelines when used with an accessory that contains no metallic component. Use of other accessories may not ensure compliance with FCC Radio Frequency exposure guidelines. This device shall not be co-located or operating in conjunction with any other antenna or transmitter.

INFORMATION TO USER

This device complies with Part 15 of the FCC Rules. Operation is subject to the following two conditions: (1) This device may not cause harmful interference, and (2) This device must accept any interference received, including interference that may cause undesired operation.

This equipment has been tested and found to comply with the limits for Class B Digital Device, pursuant to Part 15 of the FCC Rules. These limits are designed to provide reasonable protection against harmful interference in a residential installation. This equipment generates and can radiate radio frequency energy and, if not installed and used in accordance with the instructions, may cause harmful interference to radio communications. However, there is no guarantee that interference will not occur in a particular installation. If this equipment does cause harmful interference to radio or television reception, which can be determined by turning the equipment off and on, the user is encouraged to try to correct the interference by one or more of the following measures:

- Reorient or relocate the receiving antenna
- Increase the separation between the equipment and receiver
- Connect the equipment into an outlet on a circuit different from that to which the receiver is connected
- Consult the dealer or an experienced radio/TV technician for help

Any changes or modifications not expressly approved by the party responsible for compliance could void the user's authority to operate the equipment.

For more information about RF exposure, please visit the FCC web site at www.fcc.gov

For more information about the product certification, please contact support@daptech.com

COPYRIGHT POLICY

Any software described in this document is provided under a license agreement or non-disclosure agreement. It is strictly prohibited by law to copy any portion of the software provided by DAP Technologies onto any media format.

DAP is a registered trademark of DAP Technologies. Microsoft, MS-DOS and Windows CE are registered trademarks of Microsoft Corporation. PCM CIA and PC Cards are also registered trademarks of Microsoft Corporation.

Note: A Copyright Policy is also applicable for any software provided by Microsoft on DAP Products. Please refer to **Microsoft End User License Agreement** Section for further information.

Microsoft End-User License Agreement

You have acquired a DAP Technologies device that includes software licensed from Microsoft Corporation. The Microsoft software included in your device, as well as associated media, printed materials, and online documentation are all protected by Copyright Laws and International Copyright Treaties. If you do not agree with this End-User License Agreement (“EULA”), use of this device, or use and copying of, any installed software is strictly prohibited. We strongly recommend that you immediately contact a DAP Technologies Customer Representative for return instructions of the unused unit.

LICENSE GRANT

- The software must only be used with the device provided.
- There are no warranties for the software included.
- Reverse engineering is strictly prohibited.
- Software transfer is allowed but with restrictions. You may permanently transfer rights under this EULA only as part of a permanent sale or transfer of the device as long as the recipient agrees to this EULA. If the software is an upgrade, any transfer must also include all prior versions of the software.

JAVA SUPPORT

The software may contain support for programs written in Java. Java technology is not designed, manufactured, or intended for use or resale as online control equipment in hazardous environments requiring fail-safe performance. These environments include nuclear facilities, aircraft navigation, communication systems, air traffic control, life support machines, or weapons.

Warranty, Merchandise Returns and Extended Warranty

EQUIPMENT AND ACCESSORIES LIMITED WARRANTY

As manufacturer, DAP TECHNOLOGIES will replace or repair, at its discretion, any products that prove to be defective, in either material or workmanship, for a period of TWELVE (12) MONTHS following the purchase date of the "EQUIPMENT" (handheld "MICROFLEX" unit and cradle) and for a period of NINETY (90) days following the purchase date of "ACCESSORIES" (accessories and peripherals) sold by DAP TECHNOLOGIES. The warranty only covers the material and workmanship.

This warranty does not cover damages caused by misuse, abuse, neglect, or damages occurred during shipping or storage; the warranty does not cover any modification or servicing by anyone other than a DAP TECHNOLOGIES Authorized Service Center.

DAP TECHNOLOGIES cannot be held responsible for any damage caused by the misuse of the equipment or by any other software or hardware added. The device and its accessories should not be used in applications where device failure could result in physical harm or loss of life.

The operating system Windows CE and all other software sold or supplied by DAP TECHNOLOGIES are provided as is, without any warranty, either expressed or implied.

In no event shall DAP Technologies be held liable for any direct damages, indirect damages or damages incurred by the loss of present or prospective profits arising from the failure in performance of the equipment. No claim may be made against DAP TECHNOLOGIES whether arising from contractual, extra-contractual or statutory liability.

This warranty hereby excludes all other legal warranty related to the quality of the product or its capacities to fulfill specific purposes, including all warranties granted by the United Nations Convention on Contracts for the International Sales of Goods, the application of such Convention being expressly excluded.

Revised May 2008

WS08-05A1

RETURN MERCHANDISE AUTHORIZATION (RMA) FOR SERVICING

In order to have your product serviced, you must first obtain a Return Material Authorization (RMA) from DAP TECHNOLOGIES. You may then return your equipment, correctly enclosed in its original packaging if possible, to your Value Added Reseller (VAR), an Authorized Service Center, or directly to DAP TECHNOLOGIES. Service under the conditions of this warranty requires prepaid shipment from your facility to a Service Center.

The equipment and its accessories have no user serviceable parts.

To obtain a RMA you can make your request by phone or use our on-line form at:

<http://www.daptech.com/rma>

EXTENDED WARRANTY ON DAP MANUFACTURED PRODUCTS

The original purchaser may, at any time during the initial warranty period, extend the warranty through purchase of a DAP CARE Service Contract. For more information, contact DAP TECHNOLOGIES.