



CE8000B and CE8000BWE User Guide



Agile Performer HandHeld Mobile Computer



Table of Contents

ISO 9001:2000 Certification	5
Introduction	6
Intended Use	6
Product Description	6
Product Illustrations	6
Product Specifications	7
Warning / Caution / Note Definition	7
Symbols	8
Quick Tour	10
CE8640B & CE8640BWE Front View	10
CE8810B & CE8810BWE Front View	11
CE8820B & CE8820BWE Front View	12
CE8000B & CE8000BWE Back View	13
CE8000B & CE8000BWE Side View	14
Getting Started	15
Battery Warnings	15
Main Batteries Very Low	15
Main Battery Expired	15
Installing the Battery	16
Charging the Battery	17
From the Modular Charger	17
From the Communication Cradle	18
From the External Battery Charger	19
Battery Status Indicator Color Definition	20
Operation Guide	21
Turning the Unit On & Off	21
Turn Unit On	21
Turn Unit Off Manually	21
Turn Off the CE8640B Unit	21
Automatic Shut-Off	22
Touch Screen	22
Touch Screen Calibration	22
Using the Touch Screen	23
Using the Keyboard	24
CE8640B	24
CE8800B	25
Function Keys	26
Virtual Keyboard	26
Using PC Cards	28
Inserting PC Cards	28
Removing PC Cards	29
Using SDIO Cards	30
Inserting SDIO Cards	30
Removing SDIO Cards	31

Table of Contents

IrDA interface (Selected mode)	32
Transferring Files in FTP Mode	33
Wireless & BlueTooth Options (BWE versions)	34
Using Wireless	34
Using BlueTooth	35
CE8000B Options	37
Barcode Readers	38
Laser Scanner	38
Testing the Laser Scanner	38
2D Barcode Reader	39
Testing the 2D Barcode Reader	39
Advanced Settings	40
Advanced Battery Options	40
To See Power Remaining	40
Preserving Power	40
Battery Power Management	40
ActiveSync Communication	41
Partnership with Ethernet Cradle	42
Advanced User Information	44
Companion Programs	46
DAP CE8000B Programs	46
Microsoft Programs	47
Troubleshooting Guide	48
Storage & Maintenance	49
Storage	49
Cleaning	49
Shipping the Unit	49
Carrying Strap	49
Battery Maintenance	50
Main Battery	50
Backup Battery	50
Replacing the Battery	50
Touch Screen Maintenance	51
Unit with Laser Option	51
Quick-Reference Replacement Parts List	51
Recycling Passport	52
CE Conformity	53
FCC Statement, Copyright Policy	54
Microsoft End-User License Agreement	55
Warranty	56
International Addresses	57

ISO 9001:2000 Certification

DAP Technologies has documented and implemented a Quality Management System in accordance with ISO 9001:2000 International Standard (Certificate number: 95786).

This International recognition has been made possible thanks to the continual efforts put forth by DAP's Personnel.

In order to ensure continuous improvements to our products and services, we invite you to communicate your comments to our Customer Service Department by dialing:

Canada: 1 (418) 681-9394 or 1 (800) 363-1993

United States: 1(800) 363-1993

Europe: + (800) 8899 1000

or

SalesNA@daptech.com

www.daptech.com

Introduction

INTENDED USE

This User Guide is intended to assist in the operation of the CE8000B series and applies to the CE8640B, CE8800B & CE8820B running Windows CE.NET 5.0 Operating System, Release Pack P or later and manufactured after May 1st, 2009. Should any information in this Guide be incorrect, please report your comments to your local Customer Service Representative nearest you so that this document can be made as accurate as possible.

Note: For optimal use of this User Guide in electronic format, we recommend Acrobat Adobe Reader version 6.0 and higher.

PRODUCT DESCRIPTION

The CE8000B Series is built for use in all environments. It will survive being dropped, being subject to vibration, being used in below freezing conditions or desert heat, making it the ideal work tool for industry type applications within many market segments.

The BWE version includes WLAN radio 802.11b/g and Bluetooth.

PRODUCT ILLUSTRATIONS



Introduction

PRODUCT SPECIFICATIONS

For current product specifications, please contact DAP Technologies, or visit our web site www.daptech.com. **DAP Technologies reserves the right to change specifications without notice.**

WARNING / CAUTION / NOTE DEFINITION

The words WARNING, CAUTION, and NOTE carry special meanings and should be carefully reviewed.

WARNING

Alerts the reader about a situation, which if not avoided, could affect the proper functioning of the unit and result in permanent damage to the unit.

CAUTION

Alerts the reader of a potentially hazardous situation, which if not avoided, may result in minor injury to the user or may cause damage to the equipment. This includes special care necessary for the safe and effective use of the device and the care necessary to avoid any damage that may occur as a result of use or misuse.

Note:

This provides special information to make important instructions clearer.

Symbols



Warning or Caution, pay special attention when this symbol is present.



In accordance with European Directive 2002/96/EC on Waste Electrical and Electronic Equipment (WEEE), this symbol indicates that the product must not be disposed of as unsorted municipal waste, but should be collected separately. Refer to your local distributor for return and/or collection systems available in your country.



Caution must be used when this symbol is present. This symbol indicates a danger for laser radiation.

Safety Precautions

WARNING

- Refer to this Guide when inserting or removing batteries, cables or external peripherals.
 - Operate and store your DAP unit within the temperature limits specified in this Guide.
 - Do not use any pointed objects on the keyboard, door or mechanisms. Doing so may damage the unit.
 - Use the 'Stylus' which has been provided with the unit by Roper Mobile, as it has been designed with a non-abrasive material that cannot scratch or deteriorate the touch screen.
 - Never expose the battery to extreme heat or dispose of by burning.
 - Any attempts to open the case of a CE8000B unit will void the warranty.
 - If you need to use a cable other than the ones provided or recommended by DAP Technologies, we recommend that you contact your Customer Service Representative nearest you.
-

WARNING

For CE8000B units with the Summit WLAN adapter:

- Depending upon the configuration of your unit, it may have the additional Summit Wireless area network (WLAN) adapter. Should it be the case, the device will own a FCC ID #T5MFCE060. The FCC number is located at the back of the unit.
 - To comply with the FCC and other national RF exposure requirements, a device with a Summit WLAN adapter should be kept at a minimum distance of 20 cm from any body parts, except for hands, wrists, feet and ankles.
-

CAUTION

For CE8000B units with the Laser Scanner Option:

Avoid Exposure to - Laser radiation emitted from laser scanner. Do not look directly into the laser light beam.



Quick Tour

CE8640B & CE8640BWE FRONT VIEW

- 1. Function Keys (F1 to F6)
- 2. Backspace Key
- 3. Navigation Key (Left, Right, Top & Bottom)
- 4. Laser Led
- 5. ON/OFF Key
- 6. Folder Key
- 7. Blue Function Key
- 8. Space Key
- 9. Tab Key
- 10. Shift Key
- 11. Battery Status LED Indicator



Quick Tour

CE8810B & CE8810BWE FRONT VIEW

1. Light Sensor
2. Microphone
3. Battery Status Indicator
4. Navigation Key (Left, Right, Top & Bottom)
5. Enter Key
6. Function Key
7. Speaker
8. Function Keys



Quick Tour

CE8820B & CE8820BWE FRONT VIEW

1. Microphone
2. Battery Status Indicator
3. Navigation Key (Left, Right, Top & Bottom)
4. Enter Key
5. Function Key
6. Speaker
7. Function Keys
8. Access to System Key



Quick Tour

CE8000B & CE8000BWE BACK VIEW

1. Carrying Strap
2. Stylus (Pen)
3. PCMCIA Expansion Bay
4. Release Screw for Battery Compartment
5. Battery Compartment
6. Laser Trigger Button



Quick Tour

CE8000B & CE8000BWE SIDE VIEW

1. RJ45 for Ethernet Connection; or 1D/2D BarcodeScanner; or Laser Scanner
2. Charging Connector
3. Carrying Strap
4. Carrying Strap Fastener (available on both sides of the unit)
5. Charging Connectors When Inserted in Cradle
6. IrDA Port (selected model)



Getting Started

WARNING

Upon receiving your CE8000B unit, it is strongly recommended that you first charge the batteries prior to use. These following messages are likely to appear due to the length of time the unit was stored. When the battery reaches the low level, the battery status indicator will flash red. The Main Battery field will be highlighted as “Low” under the Battery or Status Tab. It will remain highlighted as long as the battery level is between 6% and 16%.

BATTERY WARNINGS

Main Batteries Very Low

Following several hours of use or storage, the main battery will become very low and this **warning** will appear when there is still some power remaining.

At 5% the battery status indicator continues to flash and a window will display to indicate to the user that the battery is at a critical level and must be re-charged. This warning shall be displayed approximately every 4 minutes for as long as the battery is below 5%.

Note: It is strongly recommended that the batteries be re-charged immediately to avoid loss of data.

Note: The level at which this warning is to appear can be configured according to preference. Refer to “**Battery Power Management**” for further instructions.

Main Battery Expired

This warning will appear when the power is too low. Turn the unit off immediately and recharge the batteries.

WARNING

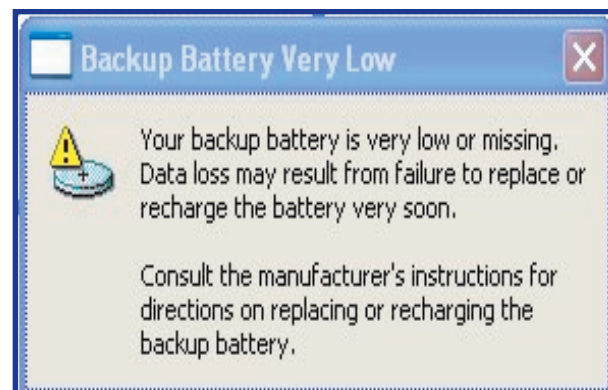
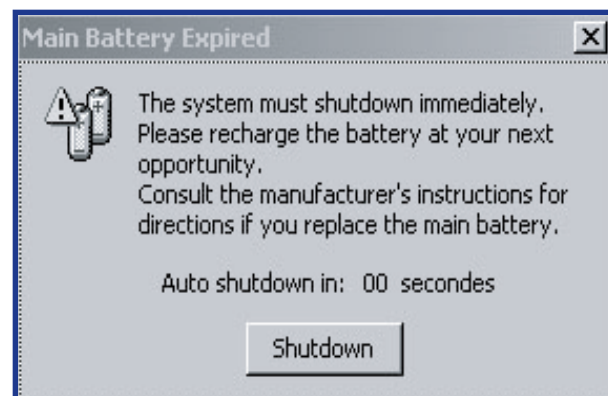
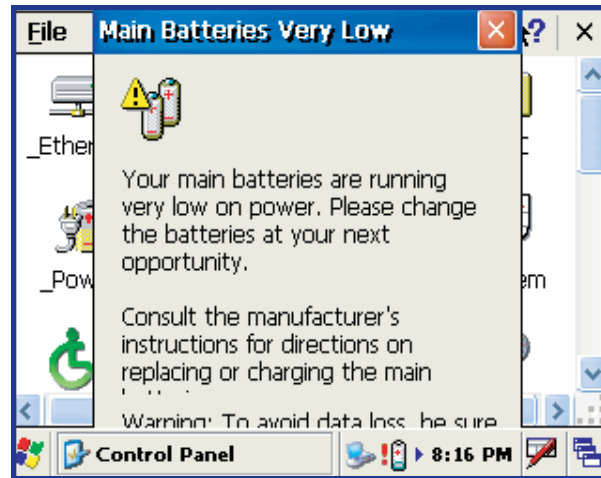
Data may be lost if the unit is not re-charged immediately.

Backup Battery Low

The backup battery will save programs and files in the memory for days. The backup battery is used when replacing the main battery or when the main battery has expired. The backup battery will be re-charged every time the main batteries are charged.

Note: The life of the backup battery will depend on:

- The residual power of the main battery.
- The amount of memory installed in the unit.



Getting Started

INSTALLING THE BATTERY

Note: All CE8000B units are delivered with battery not installed. Install battery prior to charging the unit.

1. Place the battery in the compartment located at the back of the unit.



2. Turn to lock battery pack into position.

⚠ WARNING

If battery pack is not locked into position, unit will not start even if charger is connected to the unit. A warning will display indicating to the user to lock battery pack securely into position.



Getting Started

CHARGING THE BATTERY

Note: To preserve battery integrity, recharging must only take place when the battery is at a temperature between +5°C (41°F) to + 45°C (113°F). The battery status indicator glows yellow if the battery is too hot or too cold to be charged and the charging system is disabled.

WARNING

Never recharge the unit with the battery removed. The unit may reset and can potentially corrupt any unsaved data.

From the Modular Charger

1. Charging with Modular Charger requires one of the following Modular Chargers for your area:
CSCE300-NA (North America - 110 V / 120 V AC Adapter) or the CSCE300-EU (Europe 220 V) or the CSCE300-UK (United Kingdom 220 V).

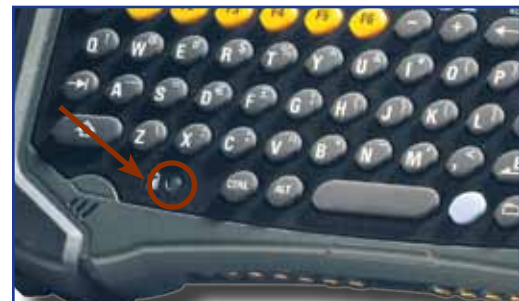


CSCE300-NA
CSCE300-EU
CSCE300-UK

2. Insert connector to unit.
3. Connect the Modular Charger to the wall outlet.



Note: The CE8000B Battery Status indicator will turn red in the next 5 seconds indicating that charging is now in progress. The light will turn green when charging is complete. Charging may take up to 5 hours.



Battery Status indicator on CE8640B

Note: If the unit was turned off, it should turn back on after a few seconds or after 2 to 3 minutes if the main battery charge has been very low for some time. Processing will resume exactly where it was interrupted once re-charging starts.



Battery Status indicator on CE8800B

Getting Started

CHARGING THE BATTERY (CONTINUED)

From the Communication Cradle

1. Cradles are available for office and vehicle use. The installation requires a Modular Charger available from DAP Technologies.

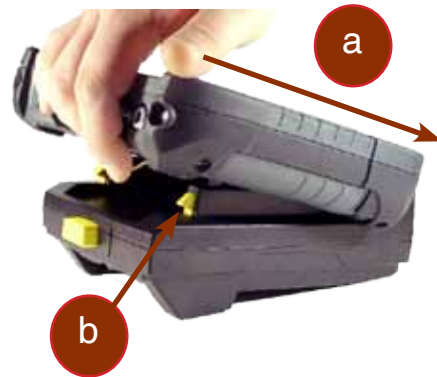
Modular Charger
for **Office** Cradles
CSCE800-NA
CSCE800-EU
CSCE800-UK

Modular Charger for
Vehicle Cradles
1) CS512 with a 240
cm (95 in) power cable

2. Before charging the CE8000B unit, you must first power up the Communication Cradle.
3. Insert the round connector of the Modular Charger into the round connector of the cradle.
4. Connect the Modular Charger to the wall outlet.



5. Slide unit into the cradle, bottom first **(a)**. (The unit will be firmly held into place by the yellow hooks located at the top of the cradle **(b)**).



6. Once charging is complete, remove the unit by pushing the yellow release button **(a)**.
7. Slide unit upwards to remove **(b)**.

WARNING

Ensure unit is inserted correctly onto cradle or charging will not occur and charging pins could be damaged.



Getting Started

CHARGING THE BATTERY (CONTINUED)

From the Communication Cradle (Continued)

Note: The CE8000B Battery Status indicator will turn red in the next 5 seconds indicating that charging is now in progress. The light will turn green when charging is complete. Charging may take up to 5 hours.

Note: If the unit was turned off, it should turn back on after a few seconds or after 2 to 3 minutes if the main battery charge has been very low for some time. Processing will resume exactly where it was interrupted once re-charging starts. For more information on the installation and use of the cradle, refer to the CBCE840 User Guide.



Battery Status indicator on CE8640B



Battery Status indicator on CE8800B

From the External Battery Charger

1. You may also use the External Battery Charger to charge the battery. Remove the main battery from the CE8000B unit.
2. Insert battery into charger.
3. Power up the charger using the appropriate AC/DC adapter. The charge indicator (LED) will be red indicating that the battery is charging. The LED will turn green after approximately 5 hours indicating a full charge.



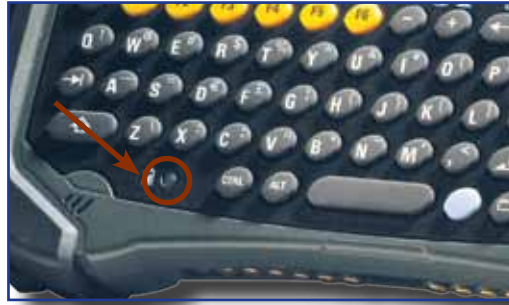
Getting Started

CHARGING THE BATTERY (CONTINUED)

From the External Charger (Continued)

Note: The CE8000B Battery Status indicator will turn red in the next 5 seconds indicating that charging is now in progress. The light will turn green when charging is complete. Charging may take up to 5 hours.

Note: If the unit was turned off, it should turn back on after a few seconds or after 2 to 3 minutes if the main battery charge has been very low for some time. Processing will resume exactly where it was interrupted once re-charging starts.



Battery Status indicator on CE8640B



Battery Status indicator on CE8800B

WARNING

If the charge indicator (LED) flashes, a problem has occurred during the charging or the battery temperature has exceeded its safe charging range of +5°C (41°F) to + 45°C (113°F). Remove the battery from the charger, disconnect the charger for 5 to 10 seconds to remove the error status and try charging again. (If the problem persists, contact a Customer Service Representative nearest you).

Battery Status Indicator Color Definition

Color	Definition
Red	Charger is connected and charging.
Green	Battery is fully charged.
Blinking Red	Warning, low battery
Yellow	Charger detected, but the battery charger temperature is too high or too low to re-charge. Charge will start when temperature is adequate.
Blinking Yellow	Charging disabled by the application program.
No Light	Power from the charger is not detected.

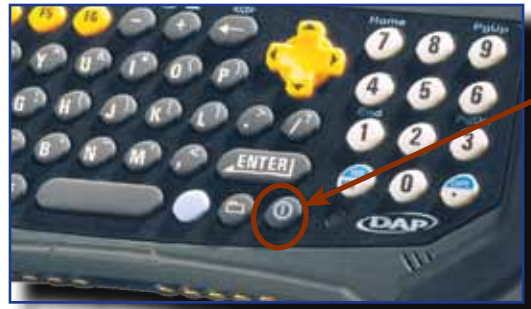
Operation Guide

TURNING THE UNIT ON & OFF

Once charging is complete, the unit will automatically turn itself off after approximately 3 minutes.

Turn Unit On

1. To turn on the CE8640B unit, press on the ON button for about 2 to 3 seconds.



2. To turn on the CE8810B or the CE8820B. Press the ON key located at the back of the unit.



Note: This key has two (2) functions:

- 1) To turn the unit ON.
- 2) To use Scanner (Laser Scanner Key).

WARNING

If the battery power level is very low, it may not be possible to turn the unit on. Ensure battery is fully charged.

Turn Unit Off Manually

1. Click on the Start Button located at the bottom left corner of your screen.
2. Click suspend.



Note: This above instruction is valid for the entire CE8000B series.

Turn Off the CE8640B Unit

1. Click on the blue key followed by the ON/OFF key; one after the other.

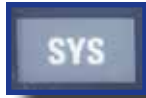


Operation Guide

TURNING THE UNIT ON & OFF (CONTINUED)

Turn Off the CE8800B Unit

1. Click on the **SYS** key.



2. Click on Suspend.



Automatic Shut-Off

If the unit remains inactive for more than 3 minutes, it will turn off automatically in order to save battery. The unit will also save the exact status of your application program and data before shutting down. Simply restart the unit when ready to resume your task where you left off.

Note: When turned off with fully charged batteries, the unit can be stored up to several days without recharging. Refer to 'Storage & Maintenance' Section for further instructions.

TOUCH SCREEN

Touch Screen Calibration

1. Hold your Stylus down until the Cross begins to move.
2. Touch the center of the Cross for a few seconds. Repeat operation as Cross moves to another location.

Carefully press and briefly hold stylus on the center of the target. Repeat as the target moves around the screen.
Press the Esc key to cancel



To access Touch Screen Calibration Menu on the CE8640:

1. Click on:
 - a) Start
 - b) Settings
 - c) Control Panel
2. Select Stylus Applet
3. Click on Calibration Tab and click on Recalibrate.

Operation Guide

TOUCH SCREEN (CONTINUED)

Using the Touch Screen

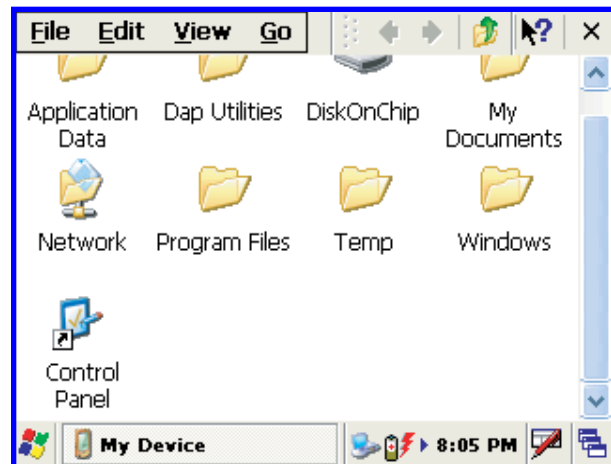
1. To use the touch screen, simply use the Stylus provided with the Unit.

WARNING

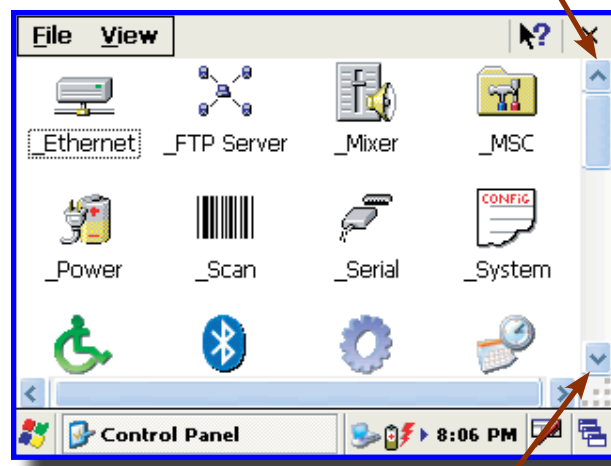
Apply normal pressure when using the Touch Screen. Excessive pressure may permanently damage the screen and hinder performance.



1. By using the Stylus provided, move files or folders by “dragging and dropping” into the folder of your choice.
2. To open a folder, double click with Stylus on the desired folder.
3. To run a program, double click with Stylus on the desired program.



4. To see more objects, use Stylus to slide scroll bar up or down, or click on the up or down arrows from the scroll bar.

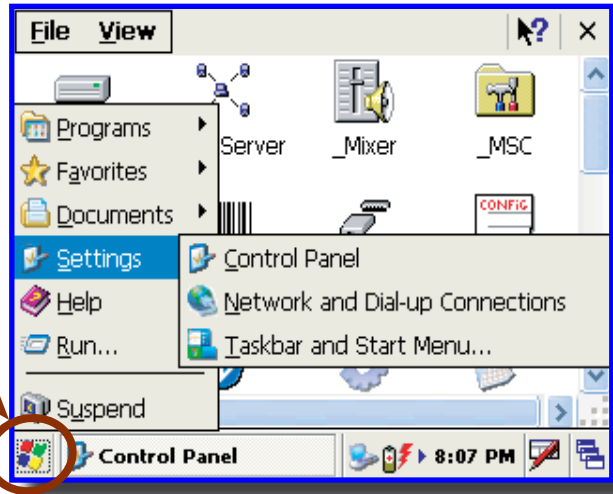


Operation Guide




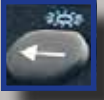

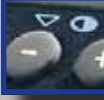
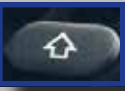

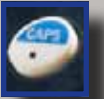
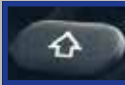

TOUCH SCREEN (CONTINUED)

Using the Touch Screen (Continued)

- To display additional programs or access Control Panel, go to the **Start** Button located at the bottom left of the screen.

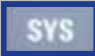
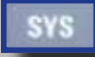



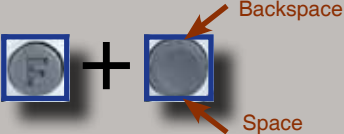



USING THE KEYBOARD CE8640B & BW

Blue Characters	Press the blue key followed by the desired character. e.g.: Pressing the blue key + W will generate the “@”  + 
Screen & Keyboard Backlight	Press the blue key followed by the backspace key; this will turn on the keyboard backlight.  + 
Screen Contrast Adjustment	Press the blue key followed by the + or - (plus or minus) to adjust contrast  + 
Upper Case & Lower Case Letters (once)	Press the shift key followed by any letter to generate an upper case letter. If CAPS Lock is on, this will then generate a lower case letter. Note: Letters are set by default at lower case.  + Letter
Series of Upper Case or Lower Case Letters	 + 
Back Tab	Press Shift followed by the Tab Key  + 

Operation Guide

USING THE KEYBOARD (CONTINUED) CE8810B & BW, CE8820B & BW

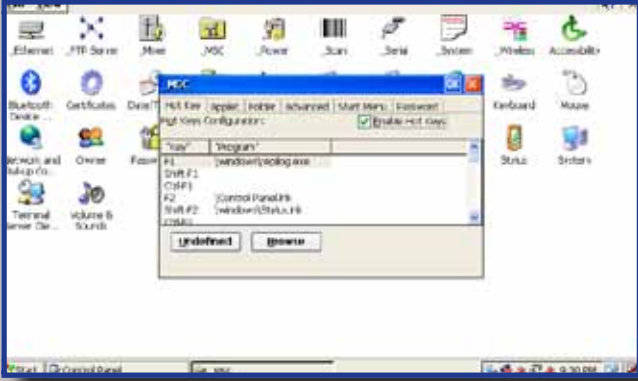
<p>Screen & Keyboard Backlight</p>	<p>Press the System Key (SYS) to access the system applet and adjust backlighting</p> 
<p>Screen Contrast Adjustment</p>	
<p>Upper Case & Lower Case Letters (once)</p>	<p>Using the virtual keyboard, press the shift key followed by any letter to generate an upper case letter. If CAPS Lock is on, this will then generate a lower case letter. Note: Letters are set by default at lower case.</p> 
<p>Series of Upper Case Letters</p>	<p>Using the virtual keyboard, press the "CAP" key for Caps lock function. All letters will then be written in Upper case.</p> 
<p>Escape Function</p>	<p>Press the Function key followed by the Enter key.</p> 
<p>Space & Back Space</p>	<p>To add a space, press the Function key followed by the lower side of the navigation key.</p>  <p>To use backspace, press the Function key followed by the upper side of the navigation key.</p>
<p>Tab & Back Tab</p>	<p>To use tab, press the Function key followed by the right side of the navigation key.</p>  <p>To use a back tab, press the Function key followed by the left side of the navigation key.</p>

Operation Guide

USING THE KEYBOARD (CONTINUED)

Function Keys

Function Keys are used to directly access specific functions to the application being used in unit.

<p>Function Keys</p>	<p>F1 Function is set by default to call "Activsync" communication. No other Function keys have been pre-programmed. These functions are to be configured by the system administrator for use with client's own application.</p> <p>Other functions may also be programmed and may be available through the virtual keyboard. Shift F1 to F6 and CTRL F1 to F6; refer to your system administrator or DAP Technologies Customer Service Team for more information on programming these keys.</p> 
-----------------------------	--

Virtual Keyboard

The virtual keyboard has been included to assist in the entry of data. By clicking the Keyboard icon at the bottom right of the Task Bar, the virtual keyboard will be displayed on the screen.

- Select **"Hide Input Panel"** to hide the Virtual Keyboard.



Operation Guide

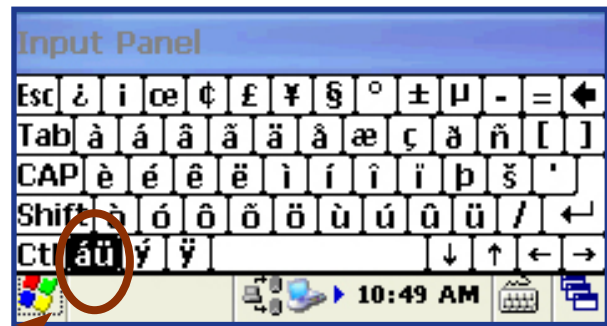
USING THE KEYBOARD (CONTINUED)

Virtual Keyboard (Continued)

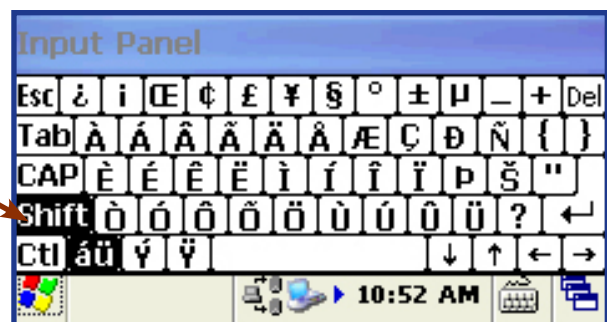
1. Standard Keyboard



2. Press **áü** to toggle between the standard and extended language Keyboard.



3. Press the **Shift** Key on the virtual Keyboard to access additional characters.



Operation Guide

USING PC CARDS

WARNING

The Application may not allow the insertion of a PC Card while it is running. Refer to your Supervisor, the application provider or a DAP Technologies Representative for further instructions.

Inserting PC Cards

1. Turn the unit off.
2. Using a Flathead Screwdriver remove the four screws located on either side of the PC Card Expansion Bay.



3. Remove Expansion Bay.



4. To insert a PC Card, slide it gently into the socket. Once inserted completely, the PC Card will lock into place (you will hear a 'click') and the release button will pop up.
5. Turn stopper to secure PC Card firmly into place.
6. Replace the door to its original position and tighten screws.



WARNING

- Ensure to place PC Card as indicated on the right or you may damage the unit or PC Card.
- Insert PC Card in a clean and dry environment to ensure no dust particles or water enters the unit.

Operation Guide

USING PC CARDS (CONTINUED)

Removing PC Cards

WARNING

The Application may not allow the removal of a PC Card while it is running. Refer to your Supervisor, the application provider or a DAP Technologies Representative for further instructions.

1. Turn the unit off.
2. Using a Flathead Screwdriver remove the four screws located on either side of the PC Card Expansion Bay.



3. Remove Expansion Bay.



4. Press the '**release button**' located to the right of the PC Card opening.
5. Remove PC Card.
6. Replace Expansion Bay and tighten screws.

WARNING

- Remove PC Card in a clean and dry environment to ensure no dust particles or water enters the unit.



Operation Guide

USING SDIO CARDS

WARNING

The Application may not allow the insertion of an SDIO Card while it is running. Refer to your Supervisor, the application provider or a DAP Technologies Representative for further instructions.

Inserting SDIO Cards

1. Turn the unit off.
2. Using a Flathead Screwdriver remove the four screws located on either side of the PC Card Expansion Bay.



3. Remove Expansion Bay.



4. Remove the stopper.



5. To insert a SDIO Card, slide it gently into the socket. Once inserted completely, the SDIO Card will lock into place.
6. Place stopper to secure SDIO Card firmly into place.
7. Replace the door to its original position and tighten screws.

WARNING

- Ensure to place SDIO Card as indicated on the right or you may damage the unit or PC Card.
- Insert SDIO Card in a clean and dry environment to ensure no dust particles or water enters the unit.



Operation Guide

USING SDIO CARDS (CONTINUED)

WARNING

The Application may not allow the removal of an SDIO Card while it is running. Refer to your Supervisor, the application provider or a DAP Technologies Representative for further instructions.

Removing SDIO Cards

1. Turn the unit off.
2. Using a Flathead Screwdriver remove the four screws located on either side of the SDIO Card Expansion Bay.



3. Remove Expansion Bay.



4. Remove stopper.



5. Remove SDIO Card.
6. Replace Expansion Bay and tighten screws.
7. Re-install stopper



WARNING

- Remove SDIO Cards in a clean and dry environment to ensure no dust particles or water enters the unit.

Operation Guide

IRDA INTERFACE (SELECTED MODE)

An IrDA ‘Infrared Data Association’ makes communication & data exchange possible over infrared light. IrDA interfaces are used in palmtop computers, mobile phones, and laptop computers etc., (although today, many laptops no longer offer IrDA in favor of Bluetooth). Often, this interface is used primarily for communication between PCs, to communicate to server or for printing. Refer to your Application Specialist or immediate supervisor for more details regarding the use of this interface from your CE8000B unit. Some basic information follows:

- To communicate using an IrDA interface, the peripheral or remote computer must also be equipped with an IrDA Interface or communication will **not** be possible.
- If both devices are equipped with an IrDA Interface, point the red window located on the side of the unit next to the connector pins, towards the IrDA receptor on the peripheral. (Not different to using an ordinary TV remote control).
- Communication will be possible at a distance not farther than one (1) meter, (3 feet).



Operation Guide

TRANSFERRING FILES IN FTP MODE

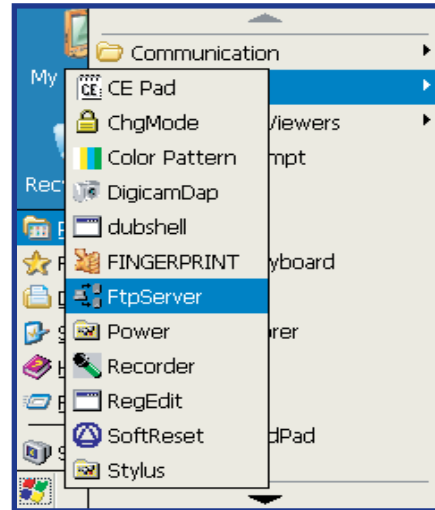
The CE8000B unit includes an FTP Server access which makes transferring files easy and does not require the use of ActivSync.

1. Insert the CE8000B unit into the Office Cradle.

Note: Once unit is inserted this will automatically activate the FTP server. If the FTP server does not activate automatically, follow the steps below.

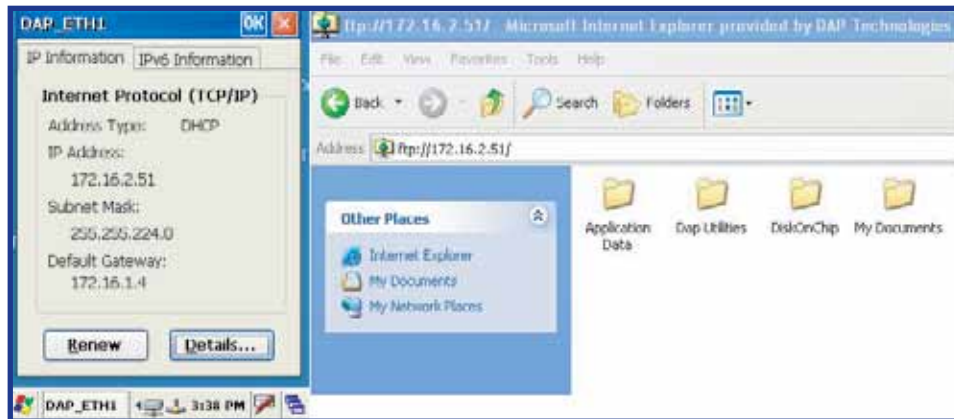
2. Click on:

- a) Start
- b) Program
- c) DAP Utilities
- d) FTP Server



3. Open Internet Explorer on your Desktop Computer then type:

FTP:// <your CE8000B IP address>
i.e.: FTP://192.168.2.34



4. The contents of your CE8000B unit will appear. Simply use the conventional 'Drag and Drop / Copy / Delete' functions to manage its contents.

Operation Guide

WIRELESS & BLUETOOTH OPTIONS (BWE VERSIONS)

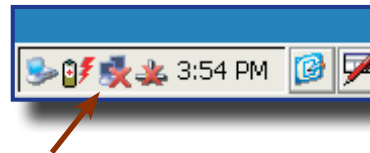
Using Wireless

To set wireless options, click on:

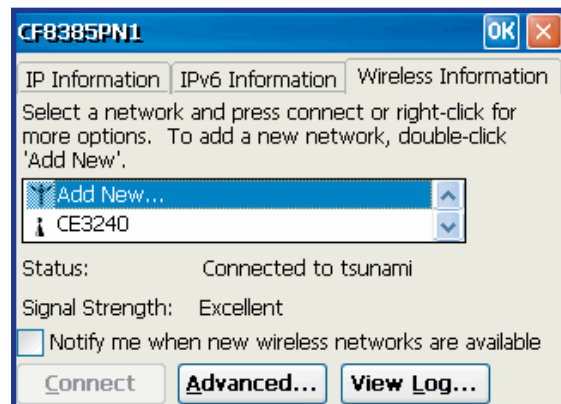
1. Start
2. Settings
3. Control Panel
4. _Wireless
5. Check to activate or un-check the options to deactivate these features.



6. Double-click on the network applet in the Task Bar.
7. Select Wireless information tab.



8. Choose the desired network connection.



Operation Guide

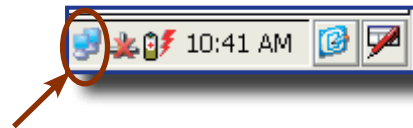
WIRELESS & BLUETOOTH OPTIONS (CONTINUED)

Using Wireless (Continued)

9. To configure the network connection, double click on the desired access point.



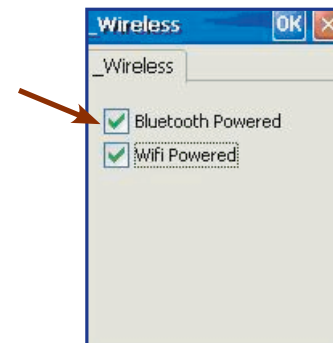
10. Once network connection is established successfully, the network applet will display as active.



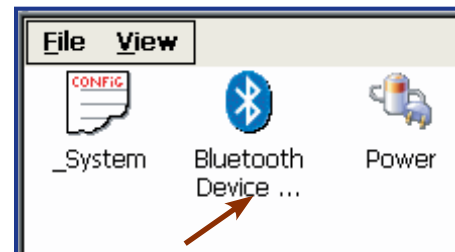
Using BlueTooth

To set wireless options, click on:

1. Start
2. Settings
3. Control Panel
4. _Wireless
5. Check to activate or un-check the options to deactivate these features.



6. Return to Control Panel
7. Select Bluetooth Device

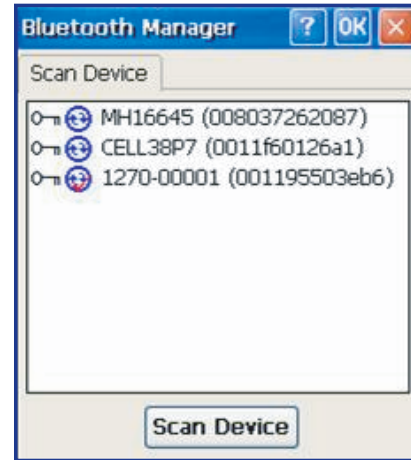


Operation Guide

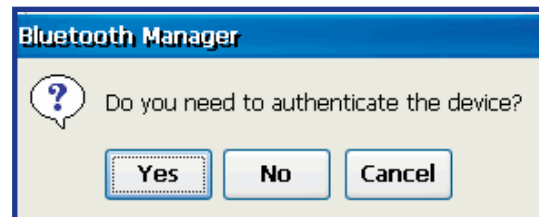
WIRELESS & BLUETOOTH OPTIONS (CONTINUED)

Using BlueTooth (Continued)

8. Use this applet to locate peripheral or delete Bluetooth partnership.
9. Click on Scan to locate peripheral.



10. Authentication might be required, refer to your supervisor for authentication and identification codes.



11. Once authentication is completed, the device will be active.



CE8000B Options

Note: Only one option can be installed on unit at one time.

Part Number	Description
AGE650	Laser Scanner
AGE655	1D/2D Barcode Scanner
AGE301	RJ45 - Ethernet Connection



AGE650



AGE655



AGE301

CE8000B Options

BARCODE READERS

Laser Scanner

The 'Laser Scanner' function will depend on the application used and a special software driver. Refer to your application's User Guide for further instructions. Information included are basic scanning instructions.

Refer to the diagram to the right for right and wrong scanning methods.

Testing the Laser Scanner

1. To test the Laser Scanner, click on:

- a) Start
- b) Program
- c) DAP Utilities
- d) CE Pad

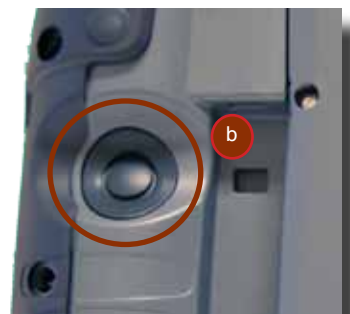
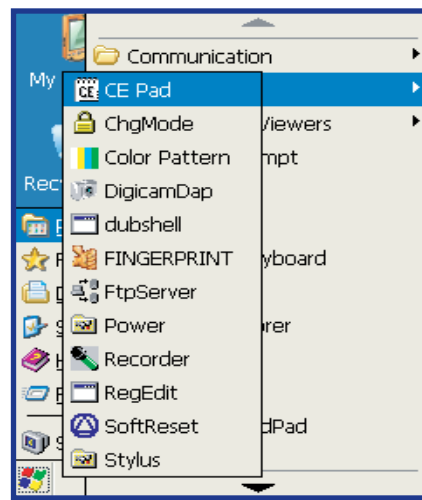
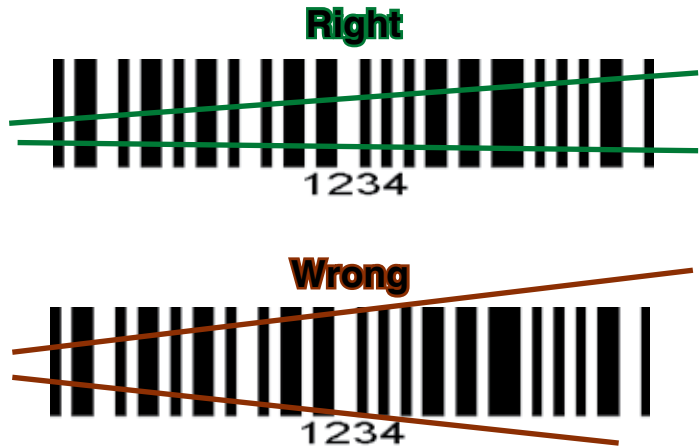
2. To activate scanner, point the top **(a)** of the unit toward the barcode label needed to be scanned.
3. Press the 'SCAN' Key **(b)** and move the unit back and forth so the beam completely crosses the label.
4. Once the label has been decoded, the unit will sound a short 'beep'.

Note: If you keep the Scan key pressed for too long, the unit will stop scanning by itself after a few moments. The unit will sound two (2) beeps to indicate that no barcode has been detected.

Advanced Users: Refer to the CE8000B Technical Guide for further instructions on programming.

CAUTION

- Avoid Exposure to Laser Light Beam.
- Do not intentionally look into the Laser Light Beam.



CE8000B Options

BARCODE READERS (CONTINUED)

2D Barcode Reader

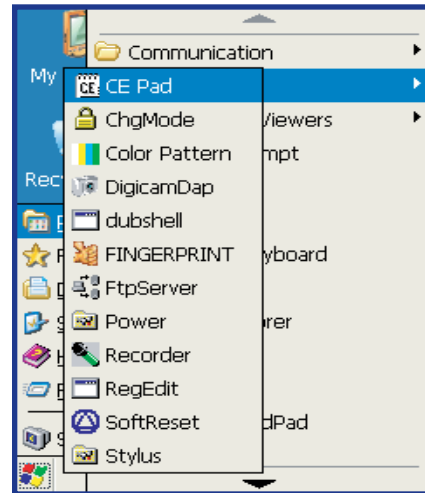
This special option is usually installed and configured in-house at the manufacturer's.

The 2D Barcode Reader is primarily controlled by the client application and a special driver. Therefore, please refer to your application specialist or supervisor for further instructions.

Note: You may also refer to the CE8000B Technical Guide located on DOCUDAP for further instructions on programming.

Testing the 2D Barcode Reader

1. To test the reader, click on:
 - a) Start
 - b) Program
 - c) DAP Utilities
 - d) CE Pad
2. Hold the unit steadily at a distance of 10 cm (4 in), from the barcode
3. To activate reader, press the F3 Key.



WARNING

Do not move the unit while reading or unit will not be able to read barcode.

Note: Unlike the laser scanner, the 2D reader does not “swipe” the barcode, but rather, it takes a reading much like a “photograph” which is then recognized and interpreted by the unit. Reading a barcode can be taken from any angle.

The 2D Barcode Reader will emit a red beam allowing the user to adequately focus on the barcode needing to be read.

Once the reading has been completed, the device will emit a sound. The numeric code will then be displayed on the screen.

You can release the trigger at any time to cancel the reading.

Advanced Settings

ADVANCED BATTERY OPTIONS

To See Power Remaining

1. Under Windows CE 5.0, click on:
 - a) Start
 - b) Settings
 - c) Control Panel
 - d) Power
 - e) Battery

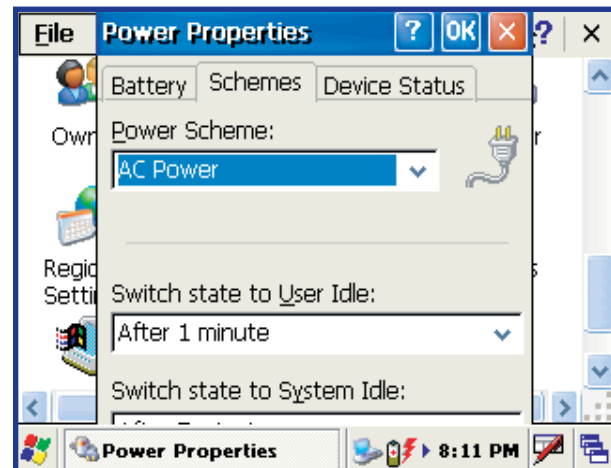


Preserving Power

It is possible to extend battery life by modifying the power delays of the unit, screen and backlighting settings.

To configure power settings:

1. Click on the “Schemes” Tab.
Note: Move Scroll bar up or down, or click the up or down arrows to see the entire menu.

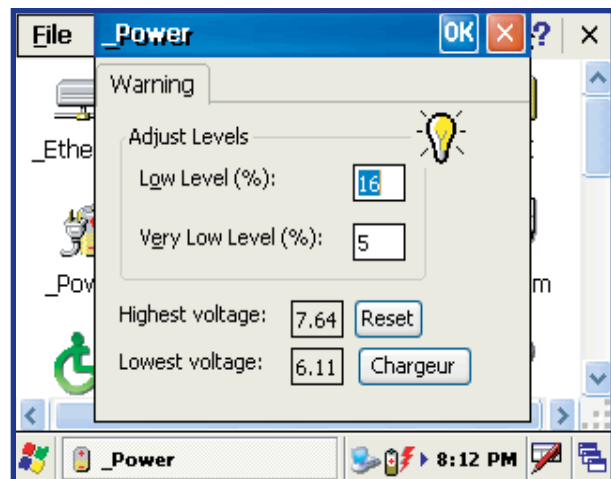


Battery Power Management

All CE8000B units are delivered with a calibrated Main Battery.

1. To setup the screen and backlight delays, click on:
 - a) Start
 - b) Settings
 - c) Control Panel
 - d) _Power
 - e) Power Off
2. Define “Low Level” & “Very Low Level” as per your selection and applications used.

Note: The default settings are 16% for “Low Level” and 5% for “Very Low”.



Advanced Settings

ACTIVESYNC COMMUNICATION

Using the Microsoft ActiveSync communication, it is possible to transfer files between a desktop computer and the CE8000B unit. Communication is possible through the serial port or USB client.

Note: With Microsoft Outlook 2002 or later, it is also possible to synchronize information between the desktop computer and the CE8000B unit.

ActiveSync Setup

Note: ActiveSync Client is already installed on the unit and the “ActiveSync Host” must be setup on the desktop computer in order to function. If the host is not installed on the desktop, follow the instructions below.

1. Download the latest version of the Microsoft ActiveSync Software from one of the following sites:

- a) From the **Microsoft Web Site**
- b) From **DAP Technologies Customer Support Web Site @ www.daptech.com**

Note: It is strongly recommended to use ActiveSync 3.8 or higher.

2. Once download is complete, launch the ActiveSync “**Install**” program. A screen will appear prompting you to Setup Microsoft ActiveSync Program.
3. Click **Next**
4. A screen will appear prompting you for what folder to save the program. The **default folder** is recommended.
5. Click **Next**
6. Once installation is completed, click “**Finish**”. If prompted “Create Partnership between Desktop and CE Device”, Click “**Cancel**”.
7. Once the installation has been successfully completed, the ActiveSync Applet will be displayed on your desktop and an icon will be added to your Task Bar. (The Software program will also be available through the Start Menu).

WARNING

Do not connect your CE8000B unit until the installation has completed.

Advanced Settings

PARTNERSHIP WITH ETHERNET CRADLE

Note: The “Ethernet Partnership” is only possible with ActiveSync 3.7, 3.8 or lower.

The Ethernet connection requires the use of a cradle model # CBCE840-3 or CBCE840-4 and an Ethernet cable connected between the cradle and your network. Refer to the “**using the Cradle**” section for further instructions.

An initial Ethernet connection normally requires a “Partnership” with your “Host” computer using a serial or USB port. DAP Technologies has made these following programs available to assist in the creation of the “Ethernet Partnership” when using the Ethernet cradle:

- SetPartnerShip.exe (Already installed on the CE8000B unit)
- PartnerShip Server.exe (This program must be downloaded)

Download PartnerShip Server.exe

1. Go to <http://www.support.daptech.com>
2. Refer to CE.NET PUBLIC DOWNLOAD
3. Copy to a folder that will be easily accessible; e.g. Desktop Folder.

Create first Ethernet partnership

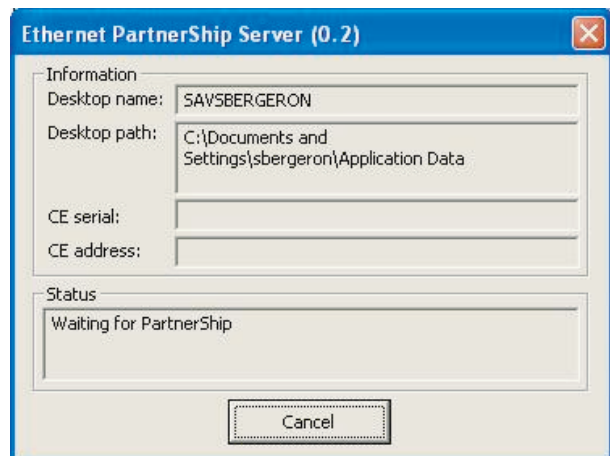
1. Install the CE8000B unit into its Ethernet Cradle and wait until the network has been detected.



Click on arrow to see more icons if network icons are not visible.

Network connection is established.

2. Launch **PartnerShip Server.exe** on the Host computer.



Advanced Settings

PARTNERSHIP WITH ETHERNET CRADLE (CONTINUED)

3. To establish PartnerShip, click on:

- a) Start
- b) Communication
- c) Set PartnerShip

4. The Ethernet PartnerShip should be established within a few seconds.

Note: This procedure needs only to be done once to create the first "PartnerShip".

5. To launch ActiveSync, Click on:

- a) Start
- b) Program
- c) Communication
- d) ActivSync

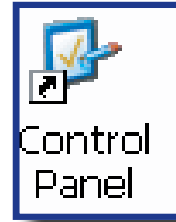
Note: For subsequent connections, simply follow step 5 to start ActiveSync.



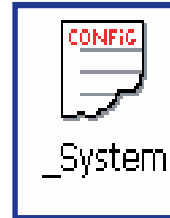
Advanced Settings

ADVANCED USER INFORMATION

To obtain the most current technical information on your CE8000B unit, you must first register your unit @ [DocuDap Technical Web Site](#).

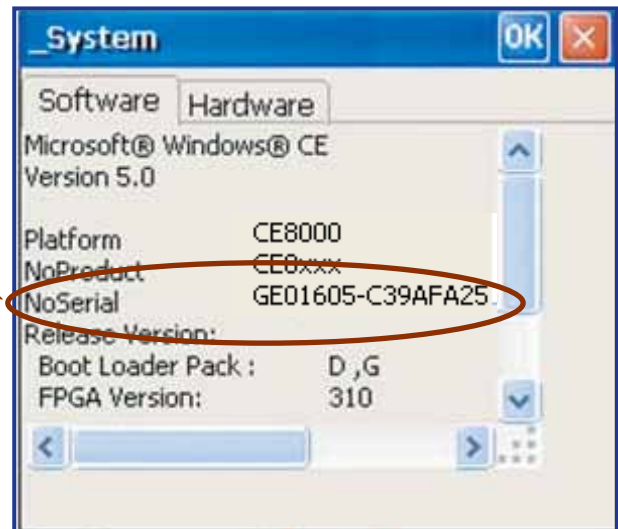


1. Click on Control Panel.



2. Click on the _System Applet.

3. From this _System Applet Window, note the 16 digit serial number.



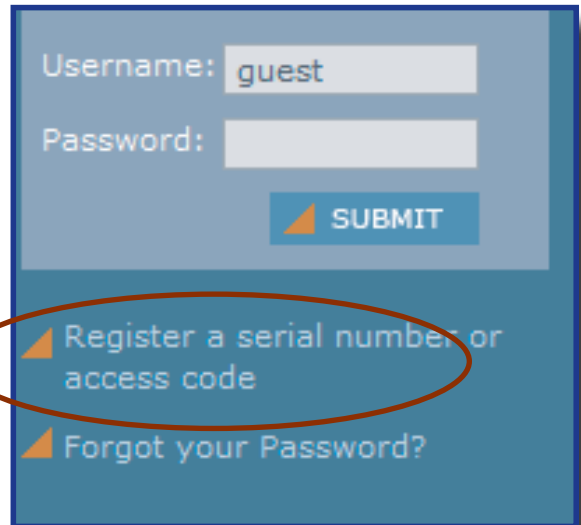
4. Start your Internet Browser.

5. Go to:
<http://www.daptech.com/DocuDap>

Advanced Settings

ADVANCED USER INFORMATION (CONTINUED)

6. Click on “**Register a Serial number or Access Code**”.



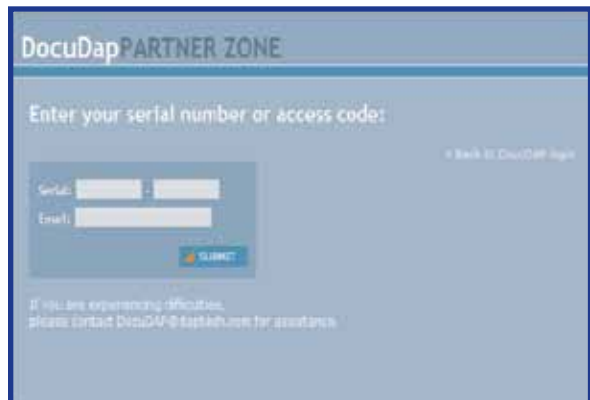
Username:

Password:

[Register a serial number or access code](#)

[Forgot your Password?](#)

7. Enter your CE8000B unit's serial number noted earlier.
8. Enter a valid Email address and your user information and password will be forwarded to you.



DocuDap PARTNER ZONE

Enter your serial number or access code:

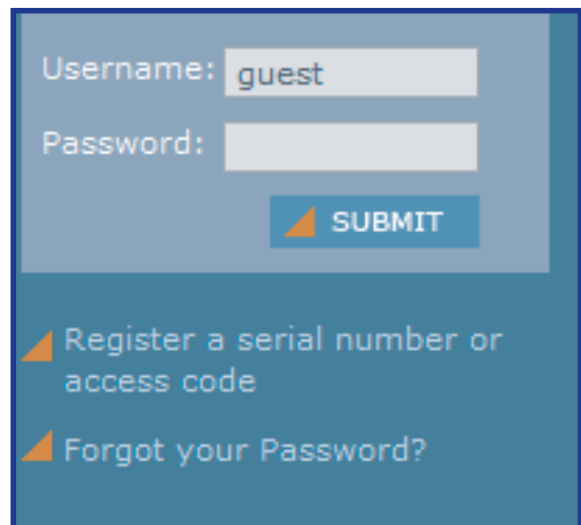
[Back to DocuDap Login](#)

Serial:

Email:

If you are experiencing difficulties, please contact DocuDAP@fast.kh.com for assistance.

9. Return to DocuDap Login and enter the information that was provided to you and click “**Submit**”.
10. You may now surf the Technical Web Site for more technical and advanced user information.



Username:

Password:

[Register a serial number or access code](#)







[Forgot your Password?](#)

Companion Programs

This section lists several programs that are included with the CE8000B unit and provides a brief description of their functions. However, **Not all programs are covered.**





It is **not** the intent of this User Guide to describe the applications included. Please refer to [DAP Technologies Technical Web Site](#) for further instructions on DAP Technologies programs included or the [Microsoft Web Site](#) for Microsoft Programs included.

DAP CE8000B PROGRAMS


Icon	Name	Definition
	CE Pad	A Small Test Editor
	Color Pattern	To verify color screen quality
	Power Remaining	Display Power Applet
	Soft Reset	Reset the unit. The supervisor mode is required.
	Recorder	Allows you to playback wave files and recorded messages.
	Change Mode	Switch between the User and Change mode

Companion Programs

MICROSOFT PROGRAMS

Icon	Name	Definition
	Inbox	Send and receive Emails by synchronizing Desktop with CE8000B unit.
	Microsoft Viewer Suite	Will display Excel files, images, PDF, PowerPoint and Word files.
	Internet Explorer	Surf the Web by synchronizing pages with desktop computer or by connecting to Internet.
	Media Player	Play music or video files

Troubleshooting Guide

Problem / Failure	Recommended Action
<p>Low Battery Messages on the Main Battery.</p>	<ol style="list-style-type: none"> 1. Still some power remains but it is recommended that you replace the battery before Data is lost.
<p>If neither of these 2 icons appear in the Task Bar when using Ethernet Cradle.</p> <div style="text-align: center;">  </div>	<ol style="list-style-type: none"> 1. Verify Network cable is connected on the back of the cradle. 2. Verify Network cable is not defective. 3. Ethernet on-board adapter may be deactivated or in Power Save Mode.
<p>The screen is blank and keyboard does not sound the 'beep' when a key is pressed.</p>	<ol style="list-style-type: none"> 1. Verify that the unit is turned on. 2. Verify that the battery is fully charged.
<p>The unit does not turn on when pressing the ON key.</p>	<ol style="list-style-type: none"> 1. Verify batteries --- batteries may need re-charging. Once unit is placed on the charger, the unit should turn itself on in the next few seconds and re-start the operating system.
<p>The PC Card does not connect.</p>	<ol style="list-style-type: none"> 1. Verify that the PC Card is inserted properly. Refer back to "Using PC Cards" section for further instructions.
<p>The display contrast is very weak or background very dark.</p>	<ol style="list-style-type: none"> 1. Verify the display contrast settings are appropriately set. Use the contrast keys to adjust the settings. (Refer to "Background Display and Contrast Advanced Settings" for further instructions.
<p>The unit does not turn off automatically or manually.</p>	<ol style="list-style-type: none"> 1. Verify unit is properly connected to the charger. 2. Verify "shutoff" feature is properly configured.

Storage & Maintenance

The CE8000B Unit is a reliable product requiring little maintenance. Only occasional replacement of the battery and the carrying strap is required.

WARNING

There are no user-serviceable parts inside the CE8000B Unit. Do not try to repair the unit as this may affect proper functioning as well as **void** the warranty.

STORAGE

- If the unit is not going to be used for a few days or more, it is recommended to keep the unit directly on the charger.
- If the unit is not going to be used for a few weeks, it is strongly recommended that the unit be fully charged and stored in a location where the temperature will be between +20°C (+68°F) to +25°C (+77°F).
- If the unit has been stored for a long period of time, recharge the battery completely prior to use.

WARNING

- If extended storage time is necessary, it is important to backup all data to ensure no data is lost or corrupted.
- Keeping the unit on the Charger is also possible, however, this may affect the battery life and capacity over time.

CLEANING

Use a normal soft cloth and mild soap to clean the CE8000B unit. Do not use abrasives as these cleansers may damage the finish and scratch the touch screen. Ensure that all compartments are properly closed prior to cleaning unit.

SHIPPING THE UNIT

The CE8000B units have been designed to withstand vibrations and shocks that can occur during normal use of the product. However, should shipping one of these units be required, it is strongly recommended that these be packaged in the same packaging the unit was delivered in, or similar packaging to avoid any damage to the units during transportation.

CARRYING STRAP

To clean the strap, simply use a mild soap and a normal soft cloth. If there is extensive wear on the strap, it may be time to change it.

Storage & Maintenance

BATTERY MAINTENANCE

Main Battery

The high-quality Lithium-Ion battery provided with your unit may be re-charged over 500 times according to the battery manufacturer.

Note: If the battery's duration does not last the normal time-frame specified, it may be time to change it. The main battery should last from 12 to 24 months if used under normal working conditions.

Backup Battery

The Backup Battery will normally not need to be replaced during the expected life of the CE8000B unit. Re-charge as specified after use.

Replacing the Battery

Note: Always turn the unit off before removing the battery. The CE8000B unit uses an approved battery to ensure a quicker charging time, longer battery life and resistance to shock and vibrations. To ensure that the batteries are appropriate for use on DAP Technologies equipment, it is strongly recommended that these be purchased directly through DAP Technologies or one of its distributors. (Check for the DAP or DAP Technologies logo on the battery).

1. Turn off the CE8000B Unit. (Refer to "Turning the Unit Off Manually" Section for further instructions).
2. Turn Battery Compartment Screw counter-clockwise to unlock.
3. Remove the battery.
4. Replace the battery ensuring to insert top end of the battery first and towards top of the unit.

CAUTION

- Personal injuries may result if batteries are not handled with care.

WARNING

- If battery becomes unusable, dispose of it immediately.
- Keep the battery away from heat sources, including open fires and direct sunlight.
- Never disassemble the battery.
- Do not place the battery on metal objects as this could short circuit the power contact pins.

Note: The type of main battery used in the CE8000 series is not considered hazardous waste. Refer to your local regulations on how to dispose of battery appropriately.



Storage & Maintenance

TOUCH SCREEN MAINTENANCE

The Touch Screen requires minimal maintenance. Only appropriate care when using and cleaning the Touch Screen is required. Use the Stylus provided with the unit when using the Touch Screen to ensure other pointed devices do not damage the screen. When cleaning, ensure to use a mild detergent and soft cloth.

WARNING

- Do Not use abrasives as these may damage the finish and scratch the Touch Screen.
- Replace or clean the Stylus as soon as it seems damaged or dirty.

UNIT WITH LASER OPTION

Note: The efficiency of the Laser reading will depend on the quality of the plastic window. Any scratch, dirt or finger prints will degrade the reading quality.

1. Clean using a mild detergent and soft cloth to ensure no scratches to the window. (A plastic lens cleaner can also be used for cleaning the window).

QUICK-REFERENCE REPLACEMENT PARTS LIST

Part Description	Part Number
Lithium-Ion Battery	DCCE800-2
Carrying Strap (4 per package)	DCCE801
Stylus (Pen), 5 units per package	DCCE500
Anti-Glare Screen Protector	DCCE816
Second Skin for Keyboard	SS8640

Recycling Passport



The Waste Electrical and Electronic Equipment Directive (WEEE) is a European directive established in 2003 for the collection, recycling and recovery targets for all types of electrical goods.

This European Directive imposes the responsibility for the disposal of waste electrical and electronic equipment on the manufacturers of such equipment.

In accordance to this directive, DAP Technologies will assist you in the proper disposal of your DAP Units.

For further instructions on how to dispose of these units, please refer to our web site:

www.daptech.com.



CE Conformity

The CE8640B, CE8810B & CE8820B have been tested and are in compliance with the 89/336/EEC European Directive for Electromagnetic Compatibility.

Electromagnetic Emissions & Electromagnetic Immunity

Standards	Definition
EN 55022	Radiated & Conducted, Class B
ENV 50204	Radiated Electromagnetic field from Radio Telephones
EN61000-4-6	Radio Frequency Continuous Conducted
EN61000-4-3	Radiated Immunity

When Laser Scanner Option is Installed

CEI / IEC Standard	Definition
CEI / IEC 60825-1	Laser Safety Approvals

US Federal (FDA) Regulation

Standard	Definition
21 CFR Chapter I, Subpart J, Part 1040.10	Performance Standards for Light Emitting Products (Class II Laser Product)

FCC Statement, Copyright Policy

FCC STATEMENT

This equipment has been tested and found to comply with the limits for a Class B digital device and is in compliance with the FCC guidelines from Part 15. These limits are designed to provide reasonable protection against harmful interference when the equipment is operated in a residential environment. This equipment generates, uses, and can radiate radio frequency energy and, if not installed and used in accordance with the instruction manual may cause harmful interference to radio communications. However, there is no guarantee that interference will not occur.

COPYRIGHT POLICY

Any software described in this document is provided under a license agreement or non-disclosure agreement. It is strictly prohibited by law to copy any portion of the software provided by DAP Technologies onto any media format.

DAP is a registered trademark of Roper Mobile. Microsoft, MS-DOS and Windows CE are registered trademarks of Microsoft Corporation. PCM CIA and PC Cards are also registered trademarks of Microsoft Corporation.

Note: A Copyright Policy is also applicable for any software provided by Microsoft on DAP Technologies Products. Please refer to **Microsoft End User License Agreement** for further information.

Microsoft End-User License Agreement

You have acquired a DAP Technologies device that includes software licensed from Microsoft Corporation. The Microsoft software included in your device, as well as associated media, printed materials, and online documentation are all protected by Copyright Laws and International Copyright Treaties. If you do not agree with this End-User License Agreement (“EULA”), use of this device, or use and copying of, any installed software is strictly prohibited. We strongly recommend that you immediately contact a DAP Technologies Customer Representative for return instructions of the unused unit.

LICENSE GRANT

- The software must only be used with the device provided.
- There are no warranties for the software included.
- Reverse engineering is strictly prohibited.
- Software transfer is allowed but with restrictions. You may permanently transfer rights under this EULA only as part of a permanent sale or transfer of the device as long as the recipient agrees to this EULA. If the software is an upgrade, any transfer must also include all prior versions of the software.

JAVA SUPPORT

The software may contain support for programs written in Java. Java technology is not designed, manufactured, or intended for use or resale as online control equipment in hazardous environments requiring fail-safe performance. These environments include nuclear facilities, aircraft navigation, communication systems, air traffic control, life support machines, or weapons.

Warranty

EQUIPMENT AND ACCESSORIES LIMITED WARRANTY

As manufacturer, DAP TECHNOLOGIES will replace or repair, at its discretion, any products that prove to be defective, in either material or workmanship, for a period of TWELVE (12) MONTHS following the purchase date of the "EQUIPMENT" (handheld "MICROFLEX" unit and cradle) and for a period of NINETY (90) days following the purchase date of "ACCESSORIES" (accessories and peripherals) sold by DAP TECHNOLOGIES. The warranty only covers the material and workmanship.

This warranty does not cover damages caused by misuse, abuse, neglect, or damages occurred during shipping or storage; the warranty does not cover any modification or servicing by anyone other than a DAP TECHNOLOGIES Authorized Service Center.

DAP TECHNOLOGIES cannot be held responsible for any damage caused by the misuse of the equipment or by any other software or hardware added. The device and its accessories should not be used in applications where device failure could result in physical harm or loss of life.

The operating system Windows CE and all other software sold or supplied by DAP TECHNOLOGIES are provided as is, without any warranty, either expressed or implied.

In no event shall DAP Technologies be held liable for any direct damages, indirect damages or damages incurred by the loss of present or prospective profits arising from the failure in performance of the equipment. No claim may be made against DAP TECHNOLOGIES whether arising from contractual, extra-contractual or statutory liability.

This warranty hereby excludes all other legal warranty related to the quality of the product or its capacities to fulfill specific purposes, including all warranties granted by the United Nations Convention on Contracts for the International Sales of Goods, the application of such Convention being expressly excluded.

Revised May 2008

WS08-05A1

RETURN MERCHANDISE AUTHORIZATION (RMA) FOR SERVICING

In order to have your product serviced, you must first obtain a Return Material Authorization (RMA) from DAP TECHNOLOGIES. You may then return your equipment, correctly enclosed in its original packaging if possible, to your Value Added Reseller (VAR), an Authorized Service Center, or directly to DAP TECHNOLOGIES. Service under the conditions of this warranty requires prepaid shipment from your facility to a Service Center.

The equipment and its accessories have no user serviceable parts.

To obtain a RMA you can make your request by phone or use our on-line form at:

<http://www.daptech.com/rma>

EXTENDED WARRANTY ON DAP MANUFACTURED PRODUCTS

The original purchaser may, at any time during the initial warranty period, extend the warranty through purchase of a DAP CARE Service Contract. For more information, contact DAP TECHNOLOGIES.

International Addresses

DAP Technologies Worldwide

Office Locations

Canada

875 Charest Boulevard West, Suite 200
Quebec City, Quebec
Canada G1N 2C9
T: (418) 681-9394
F: (418) 681-0799
TF: (800) 363-1993
E: SalesNA@daptech.com

United States

7450 South Priest Drive
Tempe, Arizona
United States, 85283
TF: (800) 363-1993
E: SalesNA@daptech.com

Europe

25 Nuffield Way
Abingdon, OX14 1RL
England
T : + 44 (0) 1235 462130
F: + 44 (0) 1235 462131
TF: + 44 (0) (800) 8899 1000
E: SalesUK@daptech.com

Customer Support

Technical Support Canada & International

+ 1 (418) 681-7833
+ 1 (800) 363-1993
TechSupportCanada@daptech.com

Technical Support USA

+ 1 (518) 293-7824
+ 1 (800) 363-1993
TechSupportUSA@daptech.com

Technical Support EMEA & UK

+ (800) 8899 1000
TechSupportEMEA@daptech.com



Canada

875 Charest Boulevard West
Suite 200
Quebec City, Quebec
Canada G1N 2C9
T: (418) 681-9394
TF: (800) 363-1993
F: (418) 681-0799
E: SalesNA@daptech.com

United States

7450, South Priest Drive
Tempe, Arizona
United States, 85283
TF: (800) 363-1993
E: SalesNA@daptech.com

United Kingdom

25 Nuffield Way
Abingdon OX14 1RL
England
T: + 44 (0) 1235 462130
TF: + 44 (0) 800 8899 1000
F: + 44 (0) 1235 462131
E: SalesUK@daptech.com



Printed in Canada