



*Mercury5 RFID Reader
Installation and Service Guide*

Contents

Mercury5 RFID Reader Installation and Service Guide	1
About this Guide	2
Installation Requirements	3
Performance Considerations	4
Tag Variables	4
Environment	4
Setting the Reader RF Power	5
Reader Installation	6
Install the Reader	7
Install the Antennas	8
Connect the Reader	8
Reader Configuration	10
Reader Service	12
Using the Browser-Based Interface	12
Status Page	13
Query Page	14
Write Page	16
Settings Page	18
Instructions for Modifying the Settings	19
Firmware Upgrade Page	20
Restart Page	21
Diagnostics Page	22
Help Page	23
Rebooting the Reader	24
Using Safe Mode	24
Specifications	26
Electrical	26
Reader	26
Separate Power Supply	26
Environmental	26
Mechanical	26
Reader	26
Supported Tag Protocols	27
Declarations	27
Regulatory Compliance	27

Appendix A	1
Authorized Antennas	1
Antenna Cables	3

Mercury5 RFID Reader Installation and Service Guide

The ThingMagic Mercury5 RFID Reader uses RFID (radio frequency identification) technology to read data stored on RFID tags and labels. The reader operates as an SQL (structured query language) server, providing tag data in response to requests from another application. A separate software application may be used to direct its operation and provide a user interface.

The reader supports UHF (ultra high frequency) antennas, which are available separately. The reader supports multiple configurations of UHF antenna ports and transfers data to a remote computer through a wired 10/100 Ethernet connection.

If you need assistance call the RFID support line at 1-800-555-RFID.

M5 RFID Reader Parts

Reader Version Description	Part No.
4 Port UHF - NA 1/0 Ruggedized	TM-M5-NA-01

About this Guide

This installation and service guide explains how to install the Mercury5 Reader and use the browser-based interface.

Use the instructions provided with the antennas to install and service the antennas.

Other related Mercury5 Reader documents are:

- ◆ Regulatory Information for the User, TM-M5-X-REG
- ◆ Query Protocol Reference Guide, TM-M5-X-RQL
- ◆ Industrial Enclosure Installation Guide, tm p/n

Note

Because customer requirements dictate the placement of reader and antenna components, your ThingMagic representative will supply this information separately.

Installation Requirements

- ◆ The reader is shipped with a certified limited power source with a cable length of 1.8m (6ft).
- ◆ Use only authorized antennas and cables to maintain FCC approval (see [Appendix A](#)).
- ◆ In order to comply with FCC requirements for RF exposure safety, a separation distance of at least 22 cm (8.7 in) needs to be maintained between the radiating elements of the antenna and the bodies of nearby persons.
- ◆ Provide strain relief for all reader connections.
- ◆ The minimum screw size for mounting the reader is #12 (M5). Use suitable wall anchors when mounting to drywall or masonry.
- ◆ A shielded Ethernet cable must be used to communicate with other devices.
- ◆ Multiple readers and antennas can be used in combination to enhance detection at specific locations provided the software application is able to synchronize antenna operation.
- ◆ Recommended minimum configuration for a computer running an application that interfaces with the Mercury5 Reader:
 - Pentium® 400 MHz processor
 - 128MB memory
 - 10 GB hard drive
 - Microsoft® Windows® 2000 or Windows XP operating system
 - T-10/100 Ethernet® port
 - CD-ROM drive

Performance Considerations

Reader performance may be affected by external factors including tag variables and environment.

Performance tests conducted under typical operating conditions at your site are recommended to help you optimize system performance.

Tag Variables

There are several variables associated with tags that can affect reader performance:

- ◆ **Application Surface**—Some materials interfere with tag performance including metal and moisture. Tags applied to items made from or containing these materials may not perform as expected.
- ◆ **Tag Orientation**—Reader performance is affected by the orientation of the tag in the antenna field.
- ◆ **Tag Model**—Many tag models are available. Each model has its own performance characteristics.

Environment

Reader performance may be affected by the following:

- ◆ Metal surfaces such as desks, filing cabinets, bookshelves, and wastebaskets may enhance or degrade reader performance.
- ◆ Mount antennas as far as possible from metal surfaces that are adversely affecting system performance.
- ◆ Devices that operate at 900MHz, such as cordless phones and wireless LANs, can interfere with reader performance.
- ◆ These devices may degrade performance of the reader. The reader may also adversely affect performance of 900MHz devices.
- ◆ Antennas operating in close proximity may interfere with one another, thus degrading reader performance.
- ◆ Interference from other antennas may be eliminated or reduced by using either one or both of the following strategies:
 - Affected antennas may be synchronized by a separate user application using a time-multiplexing strategy.
 - Antenna power can be reduced by reconfiguring the RF Transmit Power setting for the reader.

Product Configuration and Part Numbers

Mercury5 Reader Description /Part Number	Analog Modules	Addressable Read Points	Protocol Support		
			Class 0/1	ISO 18000	Gen2
UHF 4-Readpoint Ruggedized TM-M5-NA/W-02A	1	4	Yes	Yes	Yes

Setting the Reader RF Power

During initial installation, the reader must be properly configured to use the correct RF power to comply with FCC regulations. DO NOT increase the power beyond this level.

The maximum RF power is determined from antenna gain and antenna cable loss using the formula:

$$P_{max} = 36 \text{ dBm} - \text{Antenna Gain} + \text{Cable Loss}$$

For example, if the antenna has a maximum gain of 6 dBi, and the cable has a minimum loss of 0.6 dB, the maximum RF power that may be set is $(36 - 6 + 0.6) = 30.6 \text{ dBm}$.

The Reader RF Power is set through the Settings Page. See the [Status Page](#) on page 13. Note that in no case may the power be set higher than 32.5 dBm.

Reader Installation

The following parts are provided with the reader:

Part Description	Part Number	Qty.
Multi-frequency RFID Reader	TM-M5-NA-0x	1
Power Supply	TM-M5-PS	1
Installation and Service Guide	TM-M5-X-INSTALL	1
Regulatory Information for the User	TM-M5-X-REG	1
Query Protocol Reference Guide	TM-M5-X-RQL	1

Note

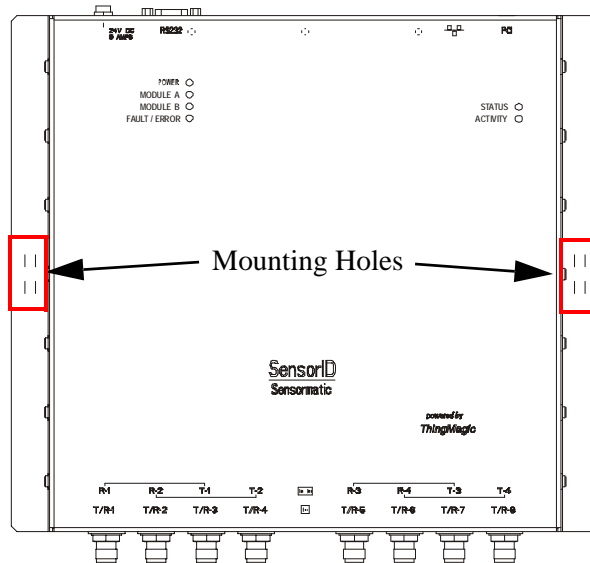
IMPORTANT: Be sure the user receives *Mercury5 Reader Regulatory Information for the User*.

Install the Reader

You can place the reader on a shelf or mount it to a wall.

To mount the reader on a wall use the following instructions:

1. Hold the reader in its mounting location and mark the position of the two mounting screws. The minimum screw size is #12 (M5).



2. Drill holes for the screws and install wall anchors if necessary.
3. Insert the screws and tighten until almost flush with the wall.
4. Slip the reader over the screws and slide down to lock the screws in the keyhole openings.
5. Tighten the screws.

Install the Antennas

The antennas can be mounted directly to a variety of surfaces. Follow the installation instructions provided with the antennas and refer to [Appendix A](#) for information about antennas from different manufacturers.

One to four dual antennas can be connected to the reader, depending on the number of cards installed. Silk-screen markings on the reader identify the cards installed.

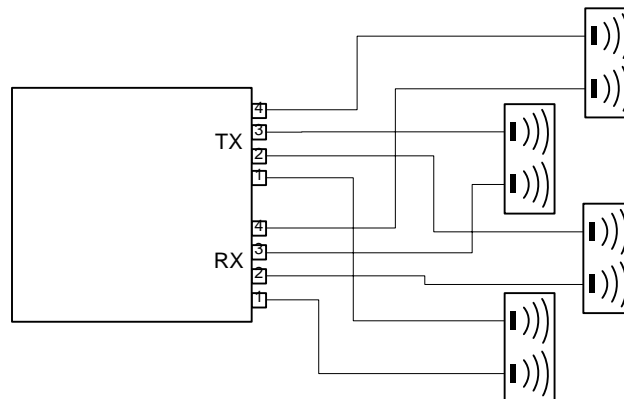
Connect the Reader

1. Connect the required UHF antennas to the ports on the reader (see the figure [Antenna Connection Options](#)).

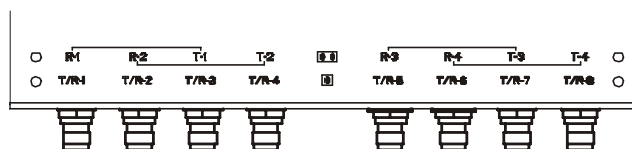
Note

IMPORTANT: Connect antennas to the ports before applying power to the reader. Any port not having an antenna connected to it will be disabled when the reader is powered on.

Antenna Connection Options



2. Verify that all antennas are securely connected.



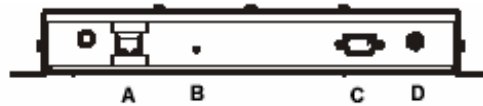
3. Connect the reader to the network by plugging an Ethernet cable into the Ethernet port.

or

Connect the reader to a PC (personal computer) by plugging a crossover Ethernet cable into the Ethernet port.

[If DHCP is to be used, then the network must be connected before powering up the reader.]

4. Plug the transformer provided with the reader into the DC power input connector. Then connect the transformer to a power outlet.



A = RJ-45 Ethernet port

C = RS-232

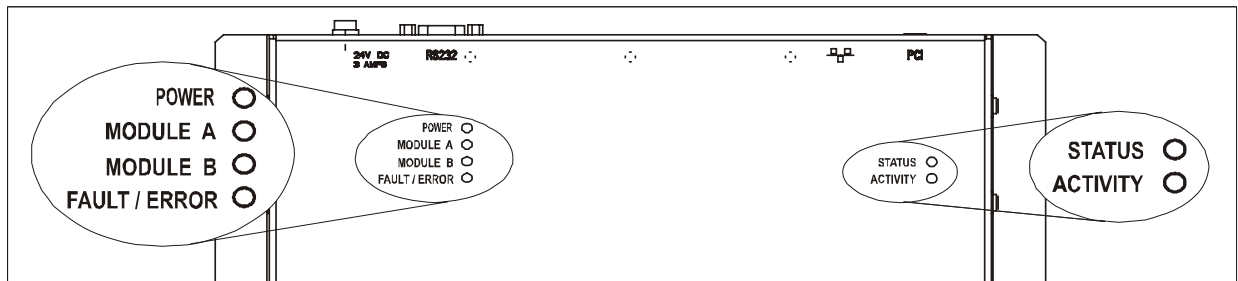
B = Safe Mode button

D = DC power input

When the reader powers up, one green, one yellow, and one red light comes on.

After approximately 30 seconds, all lights except the green one will go out; the green light will blink after the reader finishes its power-on self-test.

The reader is now ready for operation.



Reader Configuration

In some cases, the application software may provide support for reader configuration. If so, follow the instructions provided with the application.

The following procedure describes how to configure the reader directly from a network PC using the browser-based interface.

The reader is shipped with the following default network configuration:

IP Address	10.0.0.101
Subnet Mask	255.0.0.0
Gateway	10.0.0.1

You must know the IP address and subnet mask settings for the network environment in which the reader will be running.

1. Exit any reader applications that are running on the network.

Note

IMPORTANT: Running another reader application while using the browser-based interface may cause a reader error. If this happens, reboot the reader or restart the system using the browser-based interface.

2. Verify that the reader is operational. All LED's should be out except for the green power LED which should be pulsing.
3. Start a Java-enabled web browser from any network-enabled PC. This PC must be configured with an IP address and subnet mask compatible with the reader default settings.
For example:

IP Address	10.0.0.101
Subnet Mask	255.0.0.0

4. Browse to...

http://10.0.0.101

The *Mercury5 Reader* browser-based interface to the tag reader is displayed.

5. Click the **Settings** link in the navigation menu. The Modify Settings page appears.
6. These setting apply to both the LAN interface and the wireless interface. If you wish to use DHCP select the DHCP? Yes radio button; otherwise, enter the required network settings in the IP Address, Subnet Mask, and Gateway fields. The fields will turn red if the gateway is not on the same subnet as the IP address. Then, click the **Save Changes** button.

Note

IMPORTANT: Do not disconnect power until the save process is complete.

7. Set the reader RF power to correspond to antenna and cable types. Refer to [Appendix A](#).
8. Verify that the settings shown are correct. Then, restart the reader by disconnecting the power cable and then reconnecting it (see [Rebooting the Reader](#) on page 24).

It may take several seconds for the reader to restart. If the IP address was changed, you must type the new address into the browser address field to communicate with the reader.

9. Once the system restarts, click **Save Changes**. You are taken to the Settings Modified page. Your changes will be saved and then applied. After the reader reconfigures its network interfaces, it will automatically redirect you to its status page. There is no need to restart the reader.

Note

IMPORTANT: Do not disconnect power while the reader is saving its new configuration.

10. The reader is now ready to receive commands from the network.
11. Use the Query page of the browser-based interface to verify antenna operation.
12. Close the browser window. Start the reader application on the network.

Reader Service

Using the Browser-Based Interface

The Mercury5 Reader browser-based interface communicates directly with the RFID reader. It includes several tools that enable you to monitor reader performance, change reader settings, and upgrade reader firmware.

A navigation menu provides access to the following pages:

- ◆ **Status**—Displays current operational settings.
- ◆ **Query**—Allows the user to set frequency of operation, set antennas, set RF air interface protocols, and read tags.
- ◆ **Write**—Allows the user to write tags; this is only applicable to tags that are writeable.
- ◆ **Settings**—Allows the user to modify network settings.
- ◆ **Firmware**—This page can be used to upgrade the tag reader with new firmware images supplied by ThingMagic.
- ◆ **Restart**—Allows the user to restart the reader.
- ◆ **Diagnostics**—This page provides the current operating settings of the reader.
- ◆ **Help**—This page provides information that is helpful in operating the tag reader.

The browser-based interface can be run from any PC on the network. Care must be taken to configure the PC with an IP address and subnet mask compatible with the current operational settings of the reader.

To start the browser-based interface:

1. Exit all reader applications on the network.

Note

IMPORTANT: Running another reader application while using the browser-based interface may cause a reader error. If this happens, reboot the reader or restart it using the browser-based interface.

2. Start a Java-enabled web browser from any network-enabled PC.
3. Type the IP address of the reader you want to communicate with in the Address field of the browser.
4. A navigation menu and the Current Operational Settings page appear in the browser.

Mercury4 Status	
Oper	Envior Status
Wire	LAN Connection: Online
Setting	Wireless Connection: Disabled
Pinware	Connected Antenna Ports: Port 1: Connected Port 2: Not Connected Port 3: Not Connected Port 4: Not Connected
Restart	Navigation menu
Diagnosis	Radio and AFE Versions
HW	Radio Version: 2.8.45 (2014-08-26T19:55:33.04-00) Site 1: US 2-part IAP (32011161) Site 2: US 2-part IAP (32011161)
	LAN Configuration
	LAN IP Address: 10.0.0.101 LAN Subnet Mask: 255.255.255.0 LAN Subnet: 10.0.0.1 LAN MAC Address: 00:50:7B:00:06:04

Status Page

The Reader Status page shows the current settings of the reader.

Mercury4 Status	
Device Status	
LAN Connection:	Online
Wireless Connection:	Disabled
Connected Antenna Ports:	Port 1: Connected Port 2: Not Connected Port 3: Not Connected Port 4: Not Connected
Radio and AFE Versions	
Radio Version:	2.8.45 (2014-08-26T19:55:33.04-00)
Site 1:	US 2-part IAP (32011161)
Site 2:	US 2-part IAP (32011161)
LAN Configuration	
LAN IP Address:	10.0.0.101
LAN Subnet Mask:	255.255.255.0
LAN Subnet:	10.0.0.1
LAN MAC Address:	00:50:7B:00:06:04

1. Click the Status link in the navigation menu to display the Current Operational Settings page.
2. Close the browser window if you are finished using the browser-based interface.

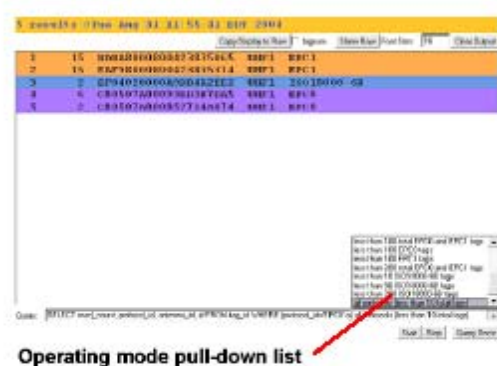
Query Page

Use the Query page to monitor reader performance. The Query page is useful for verifying performance when installation is complete and for troubleshooting performance issues.

The Query field includes a drop-down list (at the bottom-right of the screen) that enables you to specify the operating mode. The operating mode specifies the tag protocols and antenna ports to be used in conjunction with the Query page.

Note

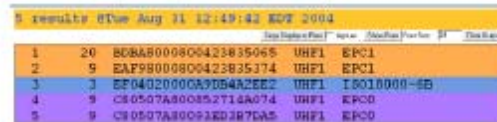
The selected settings **DO NOT** affect reader performance associated with other applications.



The following operating modes are available for use with the Query page:

Selection	Description
EPC1	CC915 protocol tags using both UHF antenna ports
CC915@UHF1	CC915 protocol tags using UHF port 1
CC915@UHF2	CC915 protocol tags using UHF port 2
ALL	All protocols using all ports

1. Click the **Query** link on the navigation menu. The Query page appears.
2. Select the operating mode from the pull-down list.
3. Click the **Start** button to begin reading tags. Tag data is displayed. Each entry shows sequential tag number, number of times tag was read, tag data, antenna, and protocol.



Seq	Count	Tag Data	Antenna	Protocol
1	20	80A80000800423835065	UHFI	EPC1
2	9	EAF98000800423835374	UHFI	EPC1
3	3	EF04020000A9D54A2EE2	UHFI	ISO18000-5B
4	9	C80507A800852714A074	UHFI	EPC0
5	9	C80507A80093ED387CA5	UHFI	EPC0

4. Click **Stop** to stop the tag search.

Note

IMPORTANT: You **MUST** stop the query before exiting the browser-based interface or the reader will continue to poll antennas.

The Query page provides additional options that enable you to control the data that is gathered and how it is displayed:

- ◆ **Bignum** checkbox (when checked) displays the total number of unique tags read. The total is displayed in large red numbers directly over the tags read list.



Seq	Count	Tag Data	Antenna	Protocol
1	20	80A80000800423835065	UHFI	EPC1
2	9	EAF98000800423835374	UHFI	EPC1
3	3	EF04020000A9D54A2EE2	UHFI	ISO18000-5B
4	9	C80507A800852714A074	UHFI	EPC0
5	9	C80507A80093ED387CA5	UHFI	EPC0

- ◆ **Show Raw** button displays raw tag data on the Query page. Each entry shows reader, protocol, antenna, and tag data.

```

rawdata @Tue Aug 31 12:49:42 EDT 2004
-----
7|1|1|0x8DBA8000800423835065
4|1|1|0x8AF98000800423835374
1|8|1|0x8F0402000A90B4A2EE2
3|9|1|0xC80507A800852714A074
3|9|1|0xC80507A80093ED3B7DA5

6|1|1|0x8DBA8000800423835065
3|1|1|0x8AF98000800423835374
1|8|1|0x8F0402000A90B4A2EE2
3|9|1|0xC80507A800852714A074
3|9|1|0xC80507A80093ED3B7DA5

7|1|1|0x8DBA8000800423835065
2|1|1|0x8AF98000800423835374
1|8|1|0x8F0402000A90B4A2EE2
3|9|1|0xC80507A800852714A074
3|9|1|0xC80507A80093ED3B7DA5

```

- ◆ **Hide Raw** button stops the display of raw tag data.
- ◆ **Clear Output** button clears the data displayed.
- ◆ **Query Once** button initiates a single search cycle after clicking **Start**.

Write Page

Use the Write page to replace the EPC data that is encoded on a 915 MHz EPC Class 1 tag.

Double-click an EPC below. Click "Make Update" to create a query for writing the selected EPC to a tag.

Place an EPC915 tag 1-2 feet in front of antenna UHF1. DO NOT place the tag closer

Make Update Make Select

Click Make Update, Make Select, or write your own RQL query here;

Submit Query

Status

Consider the following guidelines when writing to tags:

- ◆ Always place a tag 0.3–0.6m (1–2ft) from the antenna when writing data. The tag may be damaged if it is too close to the antenna.
- ◆ Only unlocked 915 MHz tags can be used. The write function is not supported for 13.56 MHz tag protocols.
- ◆ The data to be written must be exactly 16 hexadecimal characters (numerals from 0–9 and letters from A–F).
- ◆ Always place only one tag in the antenna’s field when writing. If multiple tags are present, they will all be encoded with the same EPC data.
- ◆ Use the antenna connected to UHF1.

To write data to a tag:

1. Click the **Write** link on the navigation menu. The Write page appears.
2. In the top pane, type or paste the 16-character hexadecimal data to be written to the tag.
3. Highlight the hexadecimal data.
4. Click the **Make Update** button. A query designed to write the highlighted data to the tag appears in the center pane.
5. Place the tag 0.3–0.6m (1–2ft) from the antenna connected to UHF1.
6. Verify that no other tags are in the antenna’s field.
7. Click the **Submit Query** button to write the data. If the write was successful, the new tag data appears in the bottom pane.

To read data from a tag:

1. Display the Write page (click the Write link on the navigation menu).
2. Click the Make Select button. A query designed to read data from the antenna connected to UHF1 appears in the center pane.
3. Place the tag to be read within the detection zone of the antenna.
4. Click the Submit Query button to read tag data. Query results appear in the bottom pane.

Settings Page

Use the **Modify Settings** page to change network settings.

Modify Settings

Use the following dialog to change the reader settings. For help on the acceptable values of a given field, please see [Settings Help](#). Note that these settings only affect non-safe mode operation.

Device Settings	
UHF Power (dBm)	<input type="text" value="32.5"/>
Class 1 96-bit Support	On <input checked="" type="radio"/> Off <input type="radio"/>
Hostname ²	<input type="text" value="mercury4"/>
NTP Server ³	<input type="text" value="louis.uofle.edu"/>
Domain Name ³	<input type="text"/>
Primary DNS Server ^{3, 4}	<input type="text"/>
Secondary DNS Server ^{3, 4}	<input type="text"/>
Default Gateway	Lan <input checked="" type="radio"/> Wireless <input type="radio"/>

Lan TCP/IP Settings	
Use DHCP?	Yes <input type="radio"/> No <input checked="" type="radio"/>
Vendor Class Identifier	<input type="text" value="mercury4"/>
Use DHCP-Server supplied hostname	Yes <input type="radio"/> No <input checked="" type="radio"/>
LAN IP Address	<input type="text" value="10.0.0.101"/>
LAN Netmask	<input type="text" value="255.255.255.0"/>
LAN Gateway	<input type="text" value="10.0.0.1"/>

1. Leaving Class 1 96-bit support turned **off** will optimize the reader for better performance by not searching for Class 1 96-bit tags; however, Class 1 96-bit tags will not be read unless this setting is turned on.
2. The hostname will give the device a name; however, resolving the device name from inside your network is dependent upon your DNS server's configuration. With a properly configured DNS and DHCP server the DHCP server will register this name with the DNS server for proper name resolution. If you are not using DHCP you will need to configure the DNS server by hand.
3. When using DHCP, assigning values here will override any DHCP assigned DNS servers. DNS servers are optional; however, if DNS servers are not specified either through DHCP or manually, you will have to specify IP addresses instead of names for such settings as the NTP server.
4. Changing the Wireless Channel is not recommended except for experts. It should only be used to force the Mercury 4 to use a different access point.
5. Note: Changes to NTP servers and DNS servers currently require a reboot.

1. Click the **Settings** link on the navigation menu. The Modify Settings page appears.
2. Enter the required settings.
3. Click the **Save** button to save the new settings.

Note

IMPORTANT: Do not disconnect power until the save process is complete.

The new settings DO NOT take effect until the reader is restarted by rebooting the reader (see [Rebooting the Reader](#) on page 24).

Instructions for Modifying the Settings

Changing these parameters changes the values used on startup. The set of variables that can be changed affects both the network settings and radio settings. Even though basic validity checking is performed, care must be taken to use correct values. Changing between static network settings and DHCP will change what fields are valid--static network settings are ignored when in DHCP mode, and DHCP related settings are ignored when in static IP mode.

dhcp?	This radio button determines whether the tagreader uses DHCP to obtain an IP address or static networking. The default value is Yes.
dhcpcd_ixp1	This parameter sets the flags passed to the dhcpcd process. Typical settings include -h hostname and -t timeout_in_secs. The default value is -t 15 -h Mercury5.
ipaddr_ixp1	This setting specifies the IP address used when the reader uses static addressing. It is an IP address in dotted-quad notation. The default value is 10.0.0.101.
netmask_ixp1	This setting specifies the netmask used when the reader uses static addressing. It is specified in dottedquad notation. The default value is 255.255.255.0.
broadcast_ixp1	This setting specifies the broadcast address used when the reader uses static addressing. It is specified in dotted-quad notation. The default value is 255.255.255.0.
gateway	This setting specifies the gateway to use when the reader uses static addressing. It is specified as device_name/gateway_ip_address. The default value is ixp1/10.0.0.1.
uhf_power_centidbm	This setting specifies the UHF power output level, measured in centidBm. The default value is 3000 (equal to 30.00 dBm.)

Firmware Upgrade Page

The screenshot shows a web form titled "Firmware upgrade". It contains a "Filename:" label followed by a text input field and a "Browse..." button. Below the input field is an "Upgrade" button.

1. Click the **Firmware** link on the navigation menu. The Firmware Upgrade page appears.
2. Place the cursor in the Filename field and type the complete network pathname of the firmware file or click the **Browse** button to locate the new firmware file.
3. Click the **Upgrade** button to download the new firmware to the reader.
4. The status frame at the bottom of the page displays the progress of the upgrade if the web browser supports automatic page reload. Click the **Refresh** button to update the status bar if the web browser does not support automatic page reload.
5. Downloaded firmware IS NOT implemented until the reader is restarted.
6. If an error occurs during the firmware upgrade, use Safe Mode to recover.

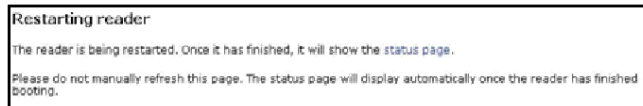
Restart Page

Use the Restart Page to restart the reader.

1. Click the Restart link on the navigation menu. The Restart Reader page appears.



2. To restart the reader, click the Restart System button. A dialog box appears asking if you want to restart the reader.
3. Click OK. The following message appears and remains on the screen until the reader restarts. Then the Status page appears.



Diagnostics Page

The diagnostics page provides a wealth of information, including the current settings of the reader, comprehensive version information, and current status of network interfaces.

Mercury4 Diagnostics

Device Status	
LAN Connection:	Online
Wireless Connection:	Disabled
Connected Antenna Ports:	Port 1: Connected
	Port 2: Not Connected
	Port 3: Not Connected
	Port 4: Not Connected

RadiOS and AFE Versions	
RadiOS Version:	2.0.46 (2004-09-26T18:55:37-04:00)
Slot 1:	US 2-port UHF (02011101)
Slot 2:	US 2-port UHF (02011101)
Kernel Version:	Cannot determine version number.

LAN Configuration	
LAN IP Address:	10.0.0.101
LAN Subnet Mask:	255.255.255.0
LAN Gateway:	10.0.0.1
LAN MAC Address:	00:50:F9:CD:06:24

Other Settings	
Primary DNS Server:	
Secondary DNS Server:	
NTP server:	louie.udel.edu
Uptime:	12:01am up 1 min, load average: 0.06, 0.31, 0.11

View Log File

Click the **View Log** button to view the log file.

There are no log files at this time.

Restart Reader

Click the **Restart System** button to restart the reader.

Help Page

Use the Help page to view descriptions of system operations.

Quick Reference

Status
Displays the current status and configuration of the reader.

Query
Provides a browser-based tag-reading interface.

- Click "Start" to start reading tags.
- Click "Stop" to stop reading tags.
- Click "Show/Hide Raw" to change the output mode.
- Click "Query Once" to run a limited round of tag reading.
- "Stock Queries" provides common query strings.

Write
Provides a browser-based tag-writing interface.

- Select an EPC from the top box (double-click, mouse drag, or Shift-cursor.) You may enter your own EPC's here, too.
- Click "Make Update" to generate a query that will write the selected EPC.
- Click "Submit Query" to execute the query.
- Check the results in the bottom box.

Settings
Displays and changes device settings.

- Click "Save Changes" to apply your changes and save them.

Firmware
Upgrades the reader firmware.

- Browse to a new firmware file and click "Upgrade" to send it to the reader. Reset the system to make the new firmware take effect.

Restart
Provides a means to restart the reader.

Diagnostics
Displays extended diagnostic information about the reader including log files.

For more information, please call 1-866-RFID-101 (1-866-7343-101) to receive technical support.

Rebooting the Reader

Use this procedure to recover from a reader error.

1. Disconnect power from the reader.
2. Re-connect reader power.
3. Wait for at least 60 seconds for the reader to boot up. The Power/Heartbeat LED remains solid green while the reader boots.

When the LED begins blinking, the boot process is complete.

Using Safe Mode

Use the Safe Mode button on the reader connector panel to recover from errors that disable the reader.

Safe mode operation restores factory default settings as follows:

Firmware Version: factory installed version

UHF (915 MHz) RF Transmit Power:30

IP Address:10.0.0.101

Subnet Mask:255.0.0.0

Gateway:10.0.0.1

Although the browser-based interface pages are displayed in red when operating in Safe mode, the reader is fully functional. In most cases, the reader will need to be reconfigured for operation with the reader application after starting in Safe mode.

1. Disconnect power from the reader.
2. Depress and hold the Safe Mode button while restoring power to the reader. Keep the Safe Mode button depressed until the reader boots completely (the green Power/Heartbeat LED blinks).



3. Factory-default settings are restored.

4. Use the browser-based interface to configure the reader for use with your system. This PC must be configured with an IP address and subnet mask compatible with the reader default settings. For example: IP address 10.0.0.10, net mask 255.0.0.0.



5. Click the **Settings** link on the navigation menu and verify the new settings.
6. Restart the reader with the new settings. Once the restart is complete, the reader is no longer in Safe Mode.

Specifications

Electrical

Reader

UHF operating frequency 902–928MHz

Input voltage 24Vdc, 2.0A

Separate Power Supply

Input voltage Nominal 100–240Vac, 50/60Hz

AC line current Nominal 0.5A at 120V

Output voltage Nominal 24Vdc, 2.5A peak

Certified limited power source

Class 2

Environmental

Operating temperature: 0° to 40°C (32° to 104°F)

Relative humidity: 0 to 90% non-condensing

Mechanical

Reader

Length 26.5cm (10.4in)

Width 26.6cm (10.4in)

Width (with mounting bracket) 30.5cm (12in)

Depth 3.8cm (1.5in)

Weight 1.4kg (3 lbs)

Supported Tag Protocols

915 MHz	EPC Class 1
.....	EPC Class 0
.....	ISO 18000-6B
.....	Gen2

Declarations

Regulatory Compliance

EMC.....47 CFR, Part 15

Safety UL 60950

Can/CSA C22.2 No 60950

EN 60950

FCC COMPLIANCE: This equipment complies with Part 15 of the FCC rules for intentional radiators and Class A digital devices when installed and used in accordance with the instruction manual. Following these rules provides reasonable protection against harmful interference from equipment operated in a commercial area. This equipment should not be installed in a residential area as it can radiate radio frequency energy that could interfere with radio communications, a situation the user would have to fix at their own expense.

EQUIPMENT MODIFICATION CAUTION: Equipment changes or modifications not expressly approved by ThingMagic LLC, the party responsible for FCC compliance, could void the user's authority to operate the equipment and could create a hazardous condition.

IMPORTANT USER INFORMATION: In order to comply with FCC requirements for RF exposure safety, a separation distance of at least 22 cm (8.7in) needs to be maintained between the radiating elements of the antenna and the bodies of nearby persons.

Other Declarations

WARRANTY DISCLAIMER: ThingMagic LLC makes no representation or warranty with respect to the contents hereof and specifically disclaims any implied warranties of merchantability or fitness for any particular purpose. Further, ThingMagic LLC reserves the right to revise this publication and make changes from time to time in the content hereof without obligation of ThingMagic LLC to notify any person of such revision or changes.

LIMITED RIGHTS NOTICE: For units of the Department of Defense, all documentation and manuals were developed at private expense and no part of it was developed using Government Funds. The restrictions governing the use and disclosure of technical data marked with this legend are set forth in the definition of “limited rights” in paragraph (a) (15) of the clause of DFARS 252.227.7013. Unpublished - rights reserved under the Copyright Laws of the United States.

TRADEMARK NOTICE: ThingMagic and the ThingMagic logo are trademarks or registered trademarks of ThingMagic LLC. Other product names mentioned herein may be trademarks or registered trademarks of ThingMagic LLC or other companies.

No part of this guide may be reproduced in any form without written permission from ThingMagic LLC.

Appendix A

Authorized Antennas

The only antennas authorized by the FCC for use with the Mercury5 Reader are in the tables below. Detailed information on each antenna is available from their respective manufacturers.

Note

IMPORTANT: No other antennas may be used with the Mercury5 Reader without violating FCC regulations. It is the responsibility of the user to comply with this requirement.

	ThingMagic Dual Antenna	Sensormatic OMNIPOINT Antenna
Model	TM-ANT-2	IDANT10LNA25
Gain	6 dBi max	5.75 dBi max
Connector	Reverse TNC	Reverse TNC
	M/A-COM Dual Antenna	Matrics General Purpose Antenna
Model	MAANAT0141	ANT-GPHP
Part No.		250012-001
Gain	5.9 dBi max.	5.75 dBi max.
Connector	Reverse TNC	Type N
	Alien Dual Antenna (Circular/Linear)	Alien Dual Antenna (RH/LH Circular)
Model	ALR9611-C+L	ALR9611-CR+CL
Gain	6 dBi max.	6 dBi max.
Connectors	integral 20' cable with reverse TNC	integral 20' cable with reverse TNC

	Accusort Ramp Bottom Antenna	Accusort Shelf Antenna
Model	0107161001	0107164001
Gain	10 dBi max.	10 dBi max.
Connectors	Mini UHF	Type N
Cables	2' LMR-195 + circulator + 10' LMR-240 (total loss = 1.45 dB) or 2' LMR-195 + circulator + 20' LMR 240 (total loss 2.25 dB)	2' LMR-195 + circulator + 10' LMR-240 (total loss = 1.55 dB) or 2' LMR-195 + circulator + 20' LMR 240 (total loss 2.35 dB)

Note

The two Accusort antennas are used with a special set of cables and circulator, as noted above. Do not use these antennas with other cables.

Antenna Cables

The only cables authorized by the FCC for use with the Mercury5 are in the table below:

	Long TNC/TNC	Long TNC/N
ThingMagic P/N	TM-M5CAB-TT-P25	TM-M5CAB-TN-P25
Length	25'	25'
Insertion Loss	2.5 dB min.	2.5 dB min.
Cable Type	Cable Type: LMR-195	Cable Type: LMR-195
Connectors	Reverse TNC to Reverse TNC	Reverse TNC to Type N
	Short TNC/TNC	Short TNC/N
ThingMagic P/N	TM-M5CAB-TT-P6	TM-M5CAB-TN-P6
Length	6'	6'
Insertion Loss	0.6 dB min.	0.6 dB min.
Cable Type	LMR-195	LMR-195
Connectors	Reverse TNC to Reverse TNC	Reverse TNC to Type N

