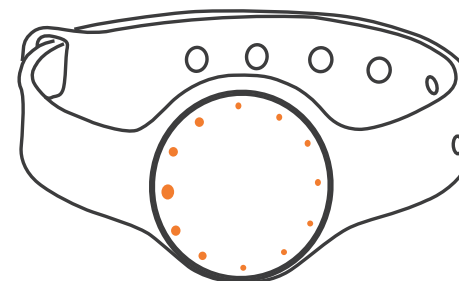


User Manual

Activity Tracker

LS410-B



- Thank you very much for selecting the Transtek Activity Tracker LS410-B.
- Please do read the user manual carefully and thoroughly so as to ensure the safe usage of this product, and keep the manual well for further reference in case you have problems.



Guangdong Transtek Medical Electronics Co., Ltd.

Zone A, No.105 ,Dongli Road, Torch Development District,
Zhongshan,528437,Guangdong,China








TEL:86-760-88282982 www.transtek.cn

Table of Contents

- Symbol Meaning**
 - Symbol Meaning 2
- Overview**
 - General Instructions 3
 - Device Components 3
- Initial Start-Up**
 - Installing and Replacing the Battery 4-5
 - Install the APP and Pair up 6
 - How to Wear the Activity Tracker 7
- Start Measuring**
 - How to Light it up 8
 - How to Use 9
- View the Data**
 - Recall the Data on the APP 10
 - Recall the Data on Activity Tracker 10
- Specifications** 11
- Maintenance** 12
- Warranty** 12
- Warning** 13
- Activity Tracker Care** 13
- Health Disclaimer** 13
- Other Notes** 13
- FCC Statement** 14

♥ Symbol Meaning

The warning signs and symbols are essential to ensure your correct and safe use of this product and protect you and others from injury. Please kindly find the meanings of the warning signs and symbols, which you may encounter in the label and user manual, as follows:

	Caution: These notes must be observed to prevent any damage to the device.		Symbol for "MANUFACTURER"
	Symbol for "DIRECT CURRENT"	 	Symbol for "ENVIRONMENT PROTECTION – Waste electrical products should not be disposed of with household waste. Please recycle where facilities exist. Check with your local authority or retailer for recycling advice"
	The Bluetooth Combination Mark		
	Symbol for "COMPLIES WITH EU REQUIREMENTS"		

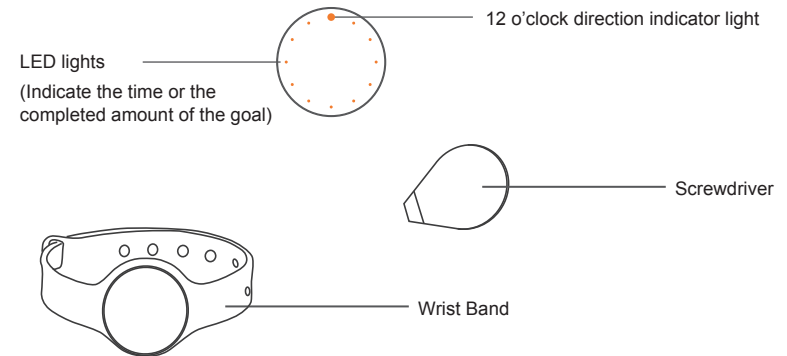
♥ General Instructions

Transtek Activity Tracker LS410-B is designed to measure the walked steps, walked distance and the burned calories. It also can display the time. This device has Bluetooth 4.0 technology, the user can set the personal information, such as height, weight, etc, through the Bluetooth device. And then download the information to Activity Tracker. The data in the Activity Tracker also can be uploaded to the device which supports the Bluetooth 4.0 technology. So the user can check it at anytime.

Main Features:

- a. support the Bluetooth 4.0 technology
- b. 12 pcs yellow LED display the time and completed amount of the goal, 1 pcs red LED indicate low battery
- c. keep a record of the measuring data during 7 days
- d. can connect with the app, set the daily goal steps, and keep a record of steps, walked distance and burned calories through the APP.
- e. track the quality of sleeping (this function can be set on the app, and will be judged by the APP server. If the app doesn't has sleep module, this function won't be shown on the Activity Tracker.)

♥ Device Components



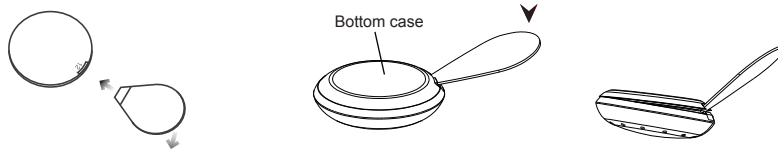
♥ List

1. Activity Tracker LS410-B
2. One CR2032 battery
3. One Screwdriver
4. User Manual

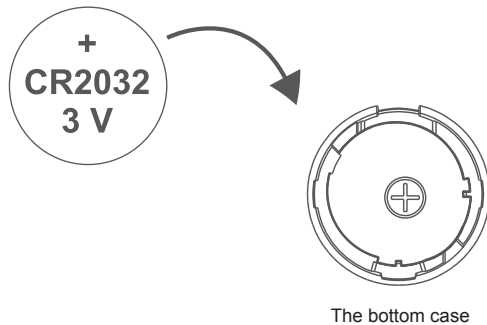
♥ Installing and Replacing the Battery

When you use the Activity Tracker for the first time, please install the battery (1×CR2032) first.

- Insert the matched screwdriver into the notch of the main unit, use it to pry the bottom case of the Activity Tracker open.



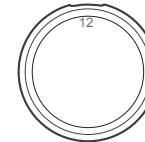
- Install the battery by matching the correct polarity, as shown. (Always select the authorized / specified battery : One CR2032 Lithium Battery)



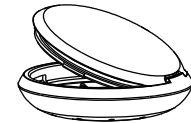
- Close the bottom case. Buckle the place which the bottom case marking "12" and the place which the top case marking "12".



"12" marked in the label of the top case



"12" marked in the bottom case



Buckle the top case and the bottom case

Replace the batteries whenever the below happen

- The red LED light blinks
- The LED display does not light up

⚠ CAUTION

- Remove the battery if the device is not likely to be used for some time.
- The old battery is harmful to the environment, do not dispose with other daily trash.
- Remove the old battery from the device and follow your local recycling guidelines.
- Do not dispose of battery in fire. Battery may explode or leak.

♥ Install the APP and Pair up

Before you use the smartphone which supports Bluetooth 4.0 technology, please turn on the Bluetooth.

Download the TransHealth app from APP Store or Google Play.

Install the APP, and register an account. Then set your personal information (Name, Gender, Birthday, Height and weight).

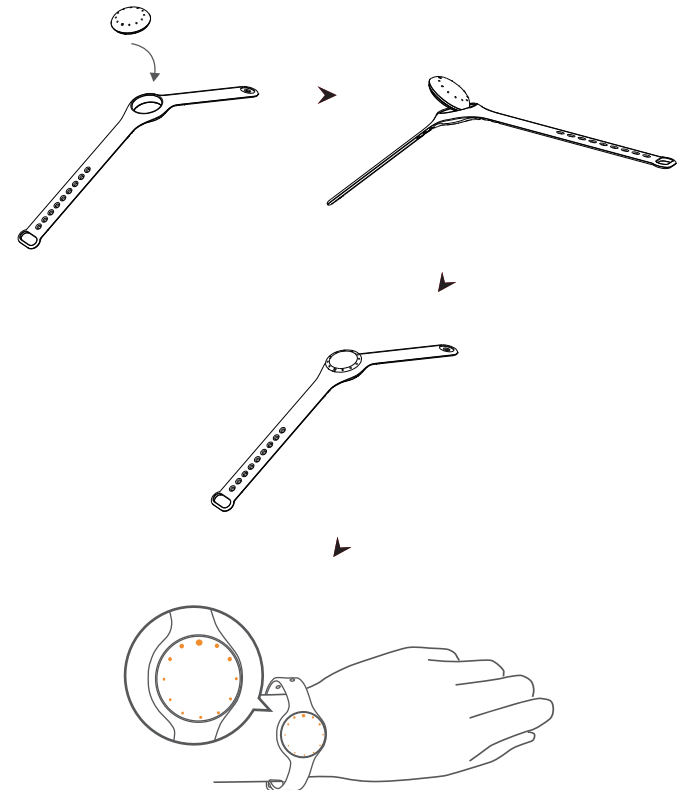
Enter the Device interface to add the device. Click "Add Device or +" to add it. Select the QR code scanner icon, use the smartphone to scan the special QR code which is located on the card for the activity tracker to bind the device, it will synchronize with your smartphone.



The time on Activity Tracker will synchronize with the time on your smartphone. The measuring data will be transmitted to your device which supports Bluetooth 4.0 technology through the Bluetooth. Open the home page of the APP to check the steps you have walked, the walked distance, burned calorie, and healthy diagram.

♥ How to Wear the Activity Tracker

Assemble the main unit into the wristband. Wear the Activity Tracker on the wrist. Make sure the "12 o'clock direction indicator light" must be towards the outer part of the wrist. Choose the suitable length and buckle the button into the corresponding hole tightly.

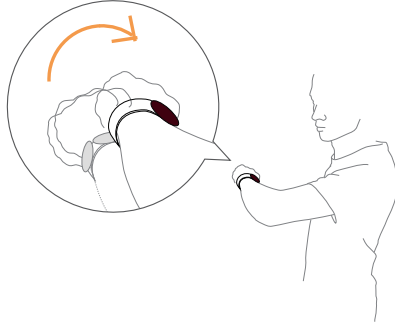


♥ How to Light it up

If the Activity Tracker detect the action of watching, the LED will light up automatically, indicating the Activity Tracker is on. There are two ways to light it up.

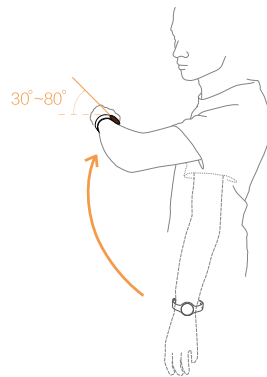
The first way:

The top case is towards outside, rotate your hand towards inside between 30° and 80° to watch normally, the Activity Tracker will light up.



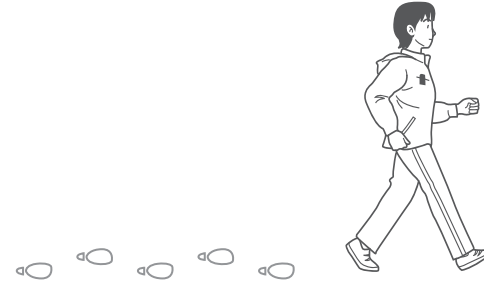
The second way:

Swing the hand from the vertical posture to the position of watching the watch normally, the surface angle is between 30° and 80° , the Activity Tracker will light up.

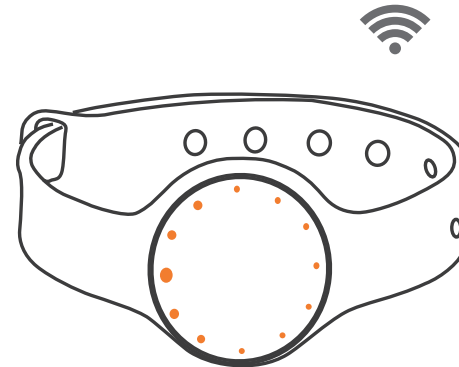


♥ How to Use

Wear the Activity Tracker and start walking.



Turn on the home page of the APP, the data will be transmitted through Bluetooth automatically in the range of 3 meters.



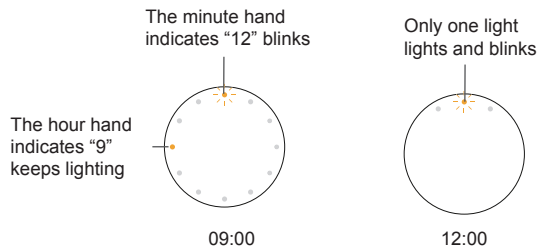
♥ Recall the Data on the APP

Recall the data on the home page of the APP. You can check the steps and distance you have walked, calories burned, and the healthy diagram.

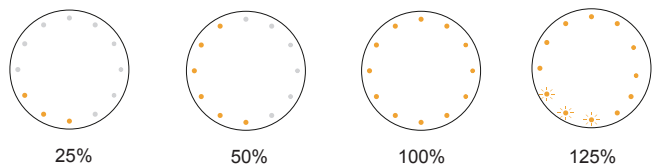
♥ Recall the Data on Activity Tracker

Check the time on Activity Tracker. When the Activity Tracker detects the action of watching, it will turn on and display the current time and completion of walking steps.

Display the current time. The light which keeps lighting indicates the hour hand. The blinking light indicates the minute hand. Only one light lights and blinks means the hour hand overlaps the minute hand. Such as 12:00, 1:05, 2:10, and so on.



Check the steps on Activity Tracker. The lighting lights indicate the completion of walking steps.



Three lights light, indicate you have finished 25% of the goal steps.

Six lights light, indicate you have finished 50% of the goal steps.

All the lights light, indicate you have reached the goal steps.

When it's over the goal steps (100%), the lights of excess part will blink.

♥ Specifications

Product Name	Activity Tracker (LS410-B)
Dimension	Whole size: ϕ 28.7mmx9.0 mm (Approx.)
Net Weight	Approx. 17 g (including the wristband)
Display	12 LED lights display
Steps	0-120000 steps, division 1 step
Calories	0-12000.0 kcal, division 0.1 kcal
Distance	60.0km
Exercise Time	0-23 hours and 59 minutes, division 1 minute
Step Accuracy	500 \pm 15 steps
Power Source	3V,CR2032 Lithium Battery
Working Environment	Temperature: 0 C to 40 C Relative Humidity: \leq 90% RH Atmospheric Pressure: 80 kPa ~ 106 kPa
Storage Environment	Temperature: -20 C to 60 C Relative Humidity: \leq 90% RH Atmospheric Pressure: 50 kPa ~ 106 kPa
Accessories	1. One CR2032 Battery 2. One Screwdriver 3. User Manual
Protection against ingress of water	IP65

About the Accuracy of This Product

This product passes strict inspection before delivery and therefore its accuracy is guaranteed by the manufacturer. Please refer to the above table for the descriptions on accuracy.

WARNING: No modification of this equipment is allowed.

♥ Maintenance

When carrying out usual maintenance, please ensure practice of the following Do's and Don'ts:

- DO use a dry soft cloth to wipe the dust.
- DO use a wet soft cloth, dipped into water and wrung out, to wipe the dirt. Then use a dry soft cloth to dry up the device.
- DON'T wash the device with water or immerse it in water.
- DON'T use propellant, abrasive or other chemicals to wipe the dirt in avoidance of discolor or malfunction.
- DON'T disassemble this device. If you have any problems, please contact Transtek. *(Please refer to [Warranty](#) for contact information)*

♥ Warranty

- Transtek warrants its products free of defects in materials and workmanship in normal use for a period of TWO years from the date of retail purchase.
- This warranty does NOT cover damages caused by misuse or abuse, including but not limited to:
 - Failure caused by unauthorized repairs or modifications;
 - Damage caused by shock or drop during transportation;
 - Failure caused by improper operation inconsistent with the instructions stated in this user manual;
 - Malfunction or damage from failure to provide the recommended maintenance;
 - Damage caused by improper use of power supply.
- Should this device require maintenance (or replacement at our option) under warranty, please deliver the original package to GUANGDONG TRANSTEK MEDICAL ELECTRONICS CO., LTD prepaid. Please return the store receipt (with the retail purchase date) and a note with reasons to return on it as well.

Guangdong Transtek Medical Electronics Co., Ltd.
 Zone A, No.105 ,Dongli Road, Torch Development District,
 Zhongshan,528437, Guangdong,China
 Tel: 86-760-88282982
 Website: <http://www.transtek.cn>

♥ Warning

While your activity tracker is designed to be worn 24/7, its components are electronic and susceptible to damage if used improperly. Please read the safety guidelines on the following pages to ensure proper use and care.

♥ Activity Tracker Care

- Do not tamper with or abuse the activity tracker. For example, without limitation, do not drop, disassemble, open, crush, excessively bend, deform, puncture, shred, microwave, incinerate, paint, or insert foreign objects into the activity tracker.
- Do not use abrasive cleaners to clean your activity tracker.
- Do not expose your activity tracker to extremely high or low temperatures.
- Do not leave your activity tracker near open flames such as cooking burners, candles, or fireplaces.
- Do not bring your activity tracker into contact with any sharp objects. This could cause scratches and damage.
- Do not insert anything into your activity tracker unless otherwise specified in the user instructions. This may damage the internal components.
- Do not attempt to repair, modify, or disassemble your activity tracker; it does not contain any user-serviceable components.

♥ Health Disclaimer

WARNING: THIS ACTIVITY TRACKER IS NOT A MEDICAL DEVICE. The activity tracker and its associated applications should not be used to diagnose, treat, or prevent any disease or medical condition. Always seek the advice of a qualified medical professional before making any changes to your exercise, sleep or nutrition, as doing so may cause severe harm or death.

♥ Other Notes

- Dispose of the activity tracker, the activity tracker's battery in accordance with local regulations. Do not dispose of the battery with regular household waste.
- Recycle your package in accordance with local regulations.

♥ FCC Statement

FCC ID: OU9LS410-B01

This device complies with Part 15 of the FCC Rules. Operation is subject to the following two conditions: (1) this device may not cause harmful interference, and (2) this device must accept any interference received, including interference that may cause undesired operation.

- Caution: The user is cautioned that changes or modifications not expressly approved by the party responsible for compliance could void the user's authority to operate the equipment.
- NOTE: This equipment has been tested and found to comply with the limits for a Class B digital device, pursuant to Part 15 of the FCC Rules. These limits are designed to provide reasonable protection against harmful interference in a residential installation. This equipment generates, uses and can radiate radio frequency energy and, if not installed and used in accordance with the instructions, may cause harmful interference to radio communications. However, there is no guarantee that interference will not occur in a particular installation.
- If this equipment does cause harmful interference to radio or television reception, which can be determined by turning the equipment off and on, the user is encouraged to try to correct the interference by one or more of the following measures:
 - Reorient or relocate the receiving antenna.
 - Increase the separation between the equipment and receiver.
 - Connect the equipment into an outlet on a circuit different from that to which the receiver is connected.
 - Consult the dealer or an experienced radio/TV technician for help.

FCC Radiation Exposure Statement:

- This equipment complies with FCC radiation exposure limits set forth for an uncontrolled environment.
- This transmitter must not be co-located or operating in conjunction with any other antenna or transmitter.