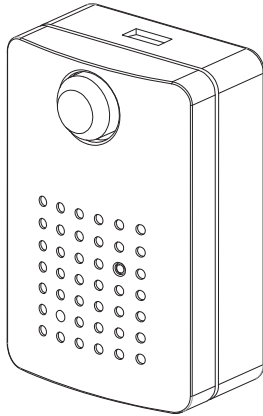


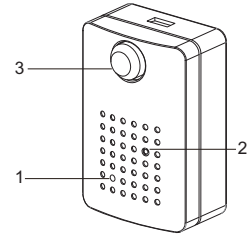
RF_PIR RF_PIR Sensor

Installation Guide



1 Product Layout

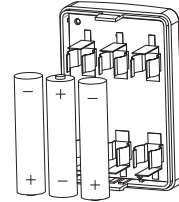
1. Pairing Button
2. LED Light
3. PIR Sensor



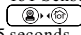
2 Quick Setup

Step1: Battery On

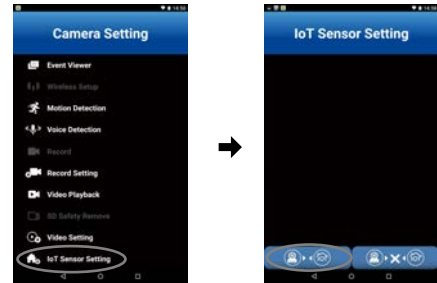
1. Remove the back cover.
2. Install three AAA batteries.



Step2: Sensor Pairing

1. Turn on camera and launch "iSmart-CAM" APP. Go to "Camera Setting" and tap "IoT Sensor Setting".
2. Tap the  then hold the pairing button for 3 seconds within 5 seconds.
3. The sensor type will be displayed after pairing completed.
4. Tap the "RIR Sensor" for detailed settings.

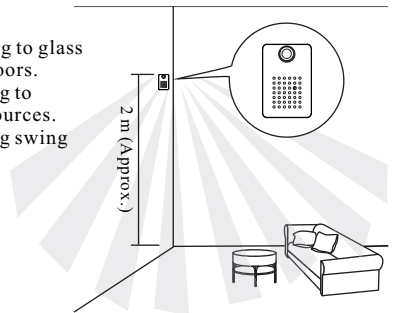
Note: If pairing successfully, the LED will light up for 3 seconds. If failed, the LED will blink.



1

4 Placement

- Note:**
1. Avoid facing to glass windows/doors.
 2. Avoid facing to heat/cold sources.
 3. Avoid facing swing objects.



5 Specification

- Frequency: 2.4G Hz
- Modulation: GFSK
- Dimensions: 64x44x24 mm
- Weight: 21.5 g
- Detect Distance: 3~5m
- Coverage Angle: 110°
- RF Operating Distance: 30m* (indoor)
- Power Supply: 4.5V (AAAx3)
- Battery Life: 1 year* (Triggered twenty times a day)
- Operating Temperature: 0°C ~ 40°C (32°F ~ 104°F)

*Actual operating distance and battery life may vary with the usage patterns and operating environment.


FCC Statement

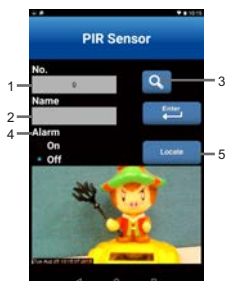
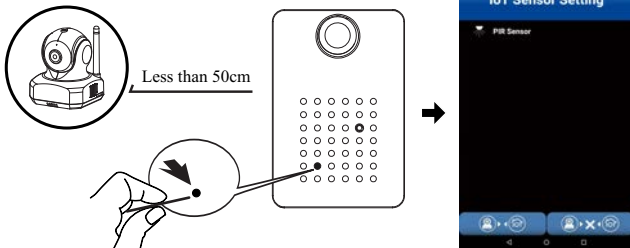
This device complies with Part 15 of the FCC Rules. Operation is subject to the following two conditions: (1) this device may not cause harmful interference, and (2) this device must accept any interference received, including interference that may cause undesired operation.

Caution

- To comply with FCC RF exposure compliance requirements, a separation distance of at least 20 cm must be maintained between the antenna of this device and all persons.
- This Transmitter must not be co-located or operating in conjunction with any other antenna or transmitter.
- Changes or modifications to this unit not expressly approved by the party responsible for compliance could void the user authority to operate the equipment.

3 Sensor Setting

1. **No.** : Sensor Number. Tap it to select other sensor. (No. 0,1,2....)
2. **Name** : Sensor Name
3.  : Search this sensor. If searched, the sensor LED will flash five times.
4. **Alarm On/Off** : "Alarm On" will enable you to receive push message when PIR sensor event is triggered. The interval between checks is 1 minute.
5. **Locate** : The camera will rotate to a preset position when "Alarm On" and PIR sensor event is triggered. Through live view window to position the camera and tap "Locate" to confirm.



2

3

410-000090-00