

# Digital Wireless Child Tracker

- ❑ User's Manual
  - ❑ Manuel d'utilisation
    - ❑ Benutzerhandbuch
      - ❑ Manual del Usuario
        - ❑ Manuale utente





<b>What You Get</b> .....	<b>1</b>
<b>Product Layout</b> .....	<b>2</b>
<b>Important Information</b> .....	<b>4</b>
<b>Setting Up</b> .....	<b>5</b>
■ Set up the Child Unit.....	5
■ Set up the Parent Unit .....	8
■ Check the connection.....	9
<b>Using the Child Tracker</b> .....	<b>10</b>
■ Channel selection function .....	11
■ Adding Child units .....	13
■ Removing Child units .....	13
■ Battery low indicator .....	14
■ Directional indicator function .....	14
■ Warning range setup .....	16
■ Find function .....	17
<b>Features</b> .....	<b>19</b>
<b>Troubleshooting</b> .....	<b>20</b>
<b>Technical Specification</b> .....	<b>21</b>
<b>Care and maintenance</b> .....	<b>21</b>

---

## What You Get



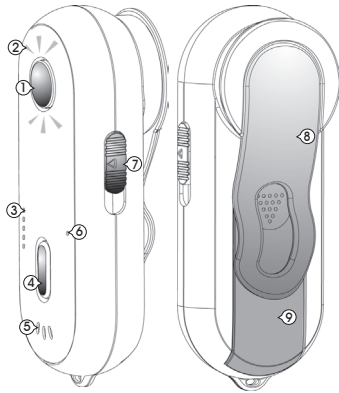
ENGLISH

- Parent Unit
  - Child Unit
    - Child Unit charger
      - Child Unit charger main power adapter
        - LIR2450 Li+ 3.6V rechargeable battery for Child Unit
          - 2 x AAA 1.5V non rechargeable alkaline batteries for Parent Unit
            - User's Manual

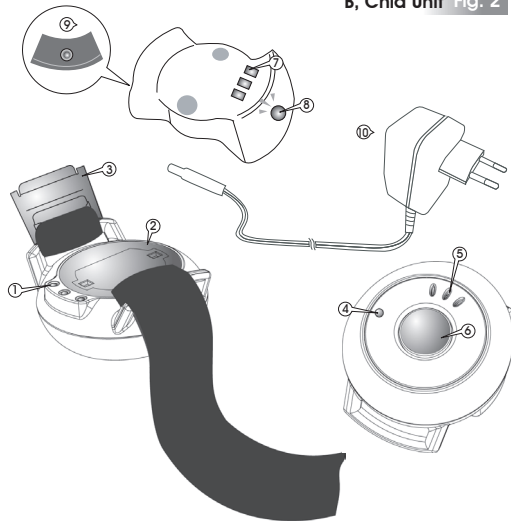


## Product Layout

A, Parent Unit Fig. 1



B, Chid Unit Fig. 2



## What You Get



### A, Parent Unit Fig. 1

- 1 Find button/Initiation child unit button
- 2 Directional indicator LED
- 3 Channel indicator LED
- 4 Channel selection button/Deletion child unit button
- 5 Speaker
- 6 Power/battery low indicator LED
- 7 Power off/warning range <near/normal/far> switch
- 8 Belt clip
- 9 battery cover



### B, Child Unit Fig. 2

- 1 charge sensor
- 2 Battery cover
- 3 Clasp
- 4 Power/battery low indicator LED
- 5 Speaker
- 6 Find button/Initiation child unit button
- 7 Charger sensor
- 8 Charger indicator LED
- 9 power adapter jack
- 10 Charger main power adapter



## **Important Information**

1. If traveling abroad, make sure that the voltage shown on the mains power adapter corresponds to the local mains power before connection to the power supply.
2. To prevent electric shock, do not open the case of the Child Unit and Parent Unit (except battery covers)
3. Risk of explosion if batteries are replaced by an incorrect type. For the Child Unit, always use LIR2450 3.6V Li+ rechargeable battery. For the Parent Unit, suggestion use AAA non rechargeable 1.5V alkaline batteries.

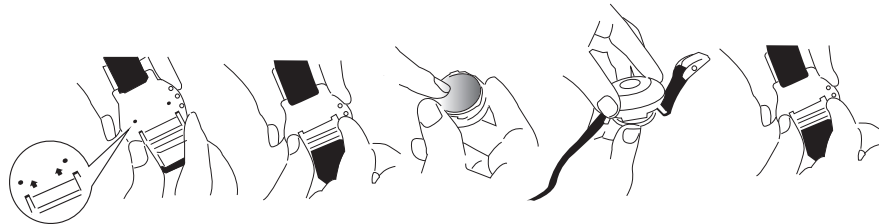


## Set up the Child Unit

**When you use this product for the first time, please charge it.**

### 1. How to install the batteries

- (1) Insert the two belt clips into the battery cover on the back of the Child unit and then open the battery cover by turning it counterclockwise.
- (2) Install the LIR2450 battery into the battery cover and turn the belt clips clockwise to combine the battery cover with the Child unit. (Please note the poles when installing batteries.) In the meantime, the Power LED will light red.

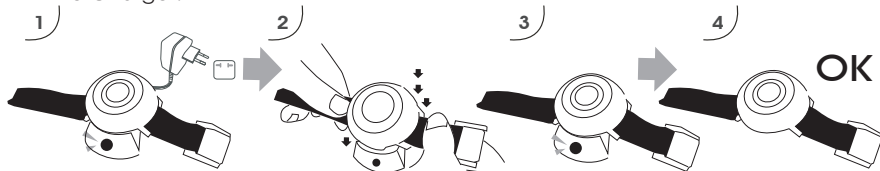




## Setting Up

### 2. How to charge

- (1) Insert the Charger Adapter into the power socket.
- (2) Connect the Charger Adapter with the Charger. In the meantime, the Charger indicator will flash red and green for three times respectively and then go out.
- (3) Connect the Child unit to the Charger in the direction as illustrated, and the Charger indicator will light red to indicate that it is being charged. When the Charger indicator lights green, it indicates the battery is charged completely. (The battery shall be charged fully within three hours depending on how much power left in it.)
- (4) When the battery is completely charged, you can remove the Child unit from the Charger.

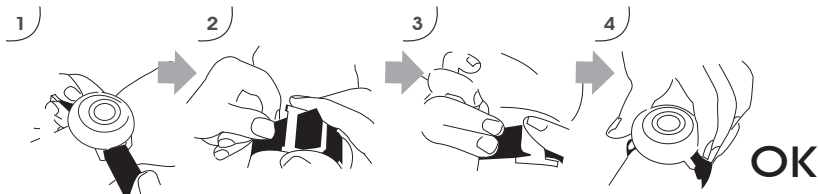






### 3. How to use the belt

- (1) Put the Child unit on the wrist as illustrated.
- (2) Wind the end of the belt without the clasp around your wrist and thread the clip on the inside. And then adjust the belt to the right tension.
- (3) Click the clasp to fix the length of the belt.
- (4) Fold up the tail of the belt and stick it on the fixed belt.

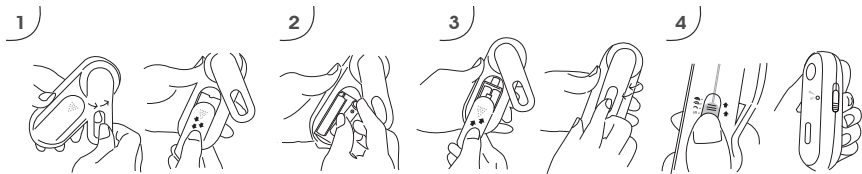




## Setting Up

### Set up the Parent Unit

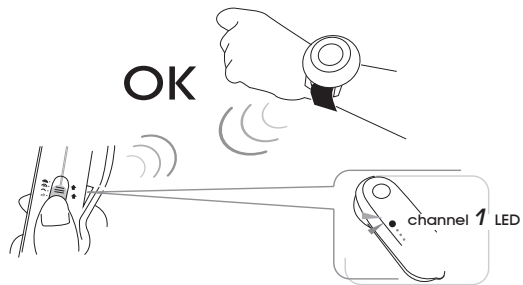
1. Open the battery cover in the direction as illustrated.
2. Install two AAA alkaline batteries in the battery cave in the right direction based on its pole.
3. Close the battery cover on the Parent unit.
4. Turn the OFF switch of the Parent unit to any distance of the warning range: near, normal or far. At this moment, the Power LED will light red.
5. You can wear the Parent unit on your waist.





### Check the connection

When the Parent unit and the Child unit are interconnected, the **channel 1** indicator lighting red and the direction indicator flashing blue suggest the connection is correct.

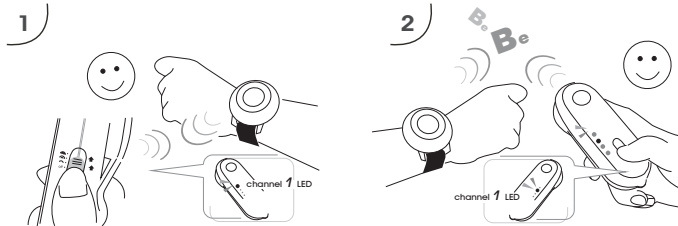




## **Using the Child Tracker**

Please do not put the Child unit in the pocket when you use it. Please wear the Child unit on your child's wrist to get the best direction indication. When the Parent unit is searching the Child unit, please hold the Parent unit tightly in a horizontal position to get the best direction indication.





### Channel selection function

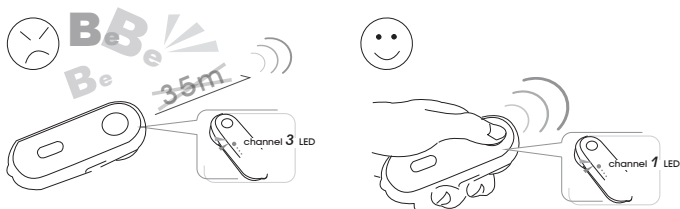
The Parent Unit can be connected up to **4** Child units

a. When you only have one Child unit:

If the Parent unit is corresponding to only one Child unit, the Child unit and the Parent unit will be set as **channel 1** internally. When the Child unit is within the warning range of the Parent unit, the **channel 1** LED will light red. When the Child unit is out of the warning range of the Parent unit, the **channel 1** LED will flash red and the buzzer will beep. At the moment, you can press channel selection button or find button to turn off the buzzer. Because there's only one Child unit, when you press channel selection button the channel won't be switched.



## Using the Child Tracker



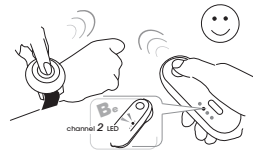
### b. When there are several Child units:

If the Parent unit is corresponding to several Child units, you can press channel selection button to select the Child unit you want to monitor. When the selected Child unit is within the warning range, the channel LED will light red. When the selected Child unit is out of the warning range, the channel LED will flash red. Other channel LEDs of the Parent unit corresponding to configured Child units will light green when the Child units are within the warning range. When the Child units are out of the warning range but within the monitoring range, the LED will flash green. When the Child units are out of valid monitoring range, the channel LED will go out.



### Adding Child units

When you want to add more Child units to the Parent unit, hold both the Find button /initiation child unit button of the Parent unit and the desired Find button/ initiation child unit button of the Child unit for 8 seconds. Then the buzzers of both Parent and Child units will beep to inform you the Child unit is added. The channel of newly added Child unit will automatically be set at the lowest channel that hasn't been set.



### Removing Child units

When you want to remove any Child units from the Parent unit, please hold the channel selection button/deletion child unit button for 8 seconds. Then the buzzer of the Parent unit will beep to inform you the Child unit is removed. Please note that when you complete removing, the Child unit and the Parent unit can not be connected. If you want to connect them, please repeat the steps described in Adding Child Units. to connect them, please repeat the steps described in Adding Child Units.





## Using the Child Tracker

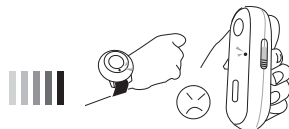
### Battery low indicator

a. Parent unit:

When the battery power is low, the Power LED will flash red as a warning, please replace with new batteries.

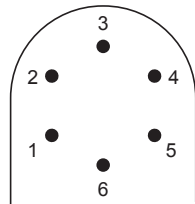
b. Child Unit:

When the battery power is low, the Power LED will flash red as a warning, please put the Child unit in the charger to charge the battery. It is recommended that the batteries shall be removed to extend the battery life when not used.



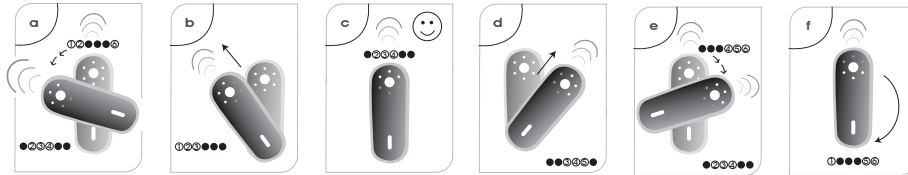
### Directional indicator function

There are 6 blue LED indicators on the Parent unit as shown in the figure. When three of the LEDs are flashing at the same time, it suggests that the Child unit is in this direction with an angle of 120 degrees. When only one of the LEDs is flashing, it suggests that the Child unit is in this direction with an angle of 60 degrees. When all the 6 LEDs go off, it suggests that the Child unit is out of the monitoring range. In this case, the Channel indicator becomes red.





## Using the Child Tracker



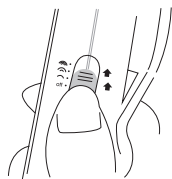
- When Indicator **1** flashes or Indicator **1, 2** and **6** flash at the same time, it indicates the monitored Child units is in the relative position of the left-half of the Parent unit. At this moment, please stay where you are and hold the Parent unit. Then turn counterclockwise until LED **2, 3** or **4** lights up.
- When Indicator **2** flashes or Indicator **1, 2** and **3** flash at the same time, it indicates the monitored Child units is in the relative position of the front left of the Parent unit. At this moment, please hold the Parent unit and move toward front-left to search for the Child unit.
- When Indicator **3** flashes or Indicator **2, 3** and **4** flash at the same time, it indicates the monitored Child units is in the relative position of the front of the Parent unit. At this moment, please hold the Parent unit and move forward to search for the Child unit.
- When Indicator **4** flashes or Indicator **3, 4** and **5** flash in the same time, it indicates that the Child units being monitored is in the relative position of the front right of the Parent unit. In the meantime, please hold the Parent unit and move front-right to search for the Child unit.
- When Indicator **5** flashes or Indicator **4, 5** and **6** flash at the same time, it indicates the monitored Child units is in the relative position of the right-half of the Parent unit. At this moment, please stay where you are and hold the Parent unit. Then turn clockwise until LED **2, 3** or **4** lights up.
- When Indicator **6** flashes or Indicator **1, 5** and **6** flash at the same time, it indicates the monitored Child units is in the relative position of the back of the Parent unit. At this moment, please hold the Parent unit and turn 180 degree.

*Note: The LEDs will be flashing quicker when the Parent unit is getting closer to the Child unit. Meanwhile, when the Parent unit is getting further away from the Child unit, the LEDs will be flashing slower.*



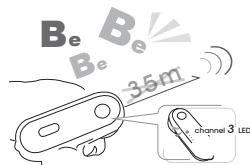
## Using the Child Tracker

) 5~10m )) 8~20m ))) 15~30m



### Warning range setup

There is a Power and Warning Range (Far, Normal and Near) switch on the lateral side of the Parent unit. When the switch is turned to **)**, it indicates the warning range is set at 5~10m. When the switch is turned to **))**, it's 8~20m. When the switch is turned to **)))**, it indicates the warning range is set at the farthest, i.e. 15~30m. The user can set the distance of the warning range based on the environment and requirement. When the distance between the Child unit and the Parent unit is within the warning range, the channel LED will light red or green. When the distance between the Child unit and the Parent unit is out of the warning range, the channel LED will flash red or green and the buzzer of the Parent unit will beep as a warning. At this moment, you can press Find button or channel selection button to turn off the buzzer. Then press channel selection button again to select the desired channel of the direction to monitor.

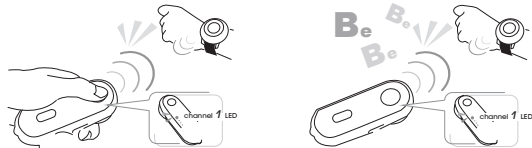




### Find function

a. How to use the Parent unit to call the Child unit:

- When you use the Parent unit to search for the Child unit, in addition to the directional LED indicators, you can also do so by pressing the Find button.
- When you press the Find button, the buzzers in the Child and Parent units will beep. You can also find the Child unit by following the beep sound.
- The beep sound will become quicker if the Parent unit is getting closer to the Child unit. Meanwhile, when the Parent unit is getting further away from the Child unit, the beep sound will become slower.
- You can turn off the buzzers on the Child and Parent units by pressing the Find button again on the Parent unit.

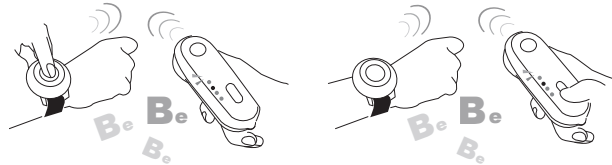




## Using the Child Tracker

### b. How to use the Child unit to call the Parent unit:

The user can also use the Child unit to call the Parent unit actively. When the Find button on the Child unit is pressed, the buzzer on the Parent unit will beep as a warning. At this moment, if the Find button or channel selection button on the Parent unit is pressed, the buzzer will turn off.





- Both units fully portable with up to 50m range.
- LEDs to guide the parent to the child instantly.
- Each parent unit is capable of monitoring 4 separate child units.
- When the Parent unit is getting closer to the Child unit, the LEDs will be flashing quicker and the beep sound will become quicker.
- Setting warning range - You can set distance between Child Unit and Parent Unit (Near range / Normal range / Far range).
- The user can use the Child unit to call the Parent unit actively.
- Low power detection - When the battery power is low, the power LED will flash red as a warning.



## **Troubleshooting**

### **If you are not getting any signal at all**

- Please check if you turn on the power switch on the Parent unit.
- Please check if the power LED on the Parent unit lights red. If not, please check whether the batteries are installed in the right direction.
- If the batteries installed in the Parent unit are in the right direction, please replace with new batteries.
- Please check if the power LED on the Child unit lights red. If not, please check whether the batteries are installed in the right direction.
- If the batteries installed in the Child unit are in the right direction, please put the Child unit on the charger to charge the battery.
- If the power LED of both the Child unit and Parent unit light red but the channel LED is not lit, please add Child units by following the procedures described above.

### **There's something wrong with the direction indication**

- Please make sure that the child wears the Child unit on his or her wrist to get the best direction indication.
- Please make sure that when you use the Parent unit to search the direction of the Child unit, you have held the Parent unit tightly in a horizontal position to get the best direction indication.
- The direction indication may be slightly inaccurate if the user uses this product in a smaller and enclosed room. It is ideal for uses in public places, such as parks or shopping malls.

## Technical Specification/Care and maintenance



### Technical Specification

#### System

Radio Frequency	2477.5 to 2482.5 MHz, Direct Sequence Spread Spectrum
Operating Range Typical	50 meters/150 feet light of sight
Warning Range	5 to 30 meters/15 to 90 feet

#### Parent Unit

Power Supply	2 x AAA 1.5V non rechargeable alkaline batteries
Dimension	W:45mm H:45mm D:11.5mm
Weight	50g
Operating temperature	0 C ~ 40 C (32 F ~ 104 F )

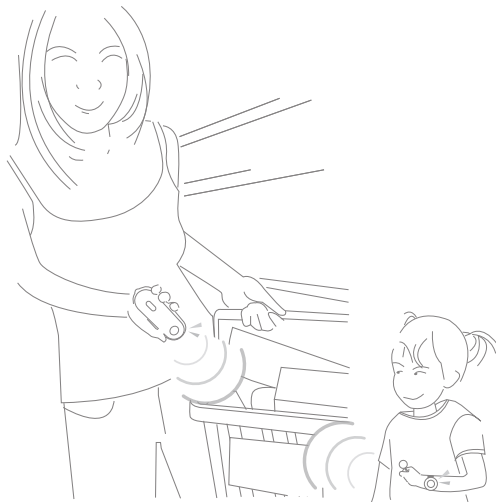
#### Child Unit

Power Supply	1 x AC power adapter DC 6V 200 mA 1 x LIR2450 Li+ 3.6V rechargeable battery
Dimension	W:45mm H:110mm D:140mm
Weight	34g
Operating temperature	0 C ~ 40 C (32 F ~ 104 F )

Specifications are subject to change without notice.

### Care and maintenance

- Remove batteries from the unit if you do not plan to use it for a period of time.
- Dispose of used batteries in an environmentally friendly manner.
- Clean the child finder with a damp cloth.



<b>Ce Que Vous Obtenez</b> .....	<b>23</b>
<b>Légende des fonctions</b> .....	<b>24</b>
<b>Informations importantes</b> .....	<b>26</b>
<b>Installation</b> .....	<b>27</b>
■ Installation de l'Unité Enfant .....	27
■ Installer l'Unité Parents .....	30
■ Contrôlez la connexion .....	31
<b>Utilisation du Traqueur Enfant</b> .....	<b>32</b>
■ Fonction de choix des Canaux .....	33
■ Ajouter des Unités Enfant .....	35
■ Retirer des Unités Enfant .....	35
■ Indicateur de faibles batteries .....	36
■ Indicateur de Fonction directionnelle .....	36
■ Installation de l'Avertissement de .....	38
■ Fonction de Trouver .....	39
<b>Caractéristiques</b> .....	<b>41</b>
<b>Dépannage</b> .....	<b>42</b>

---



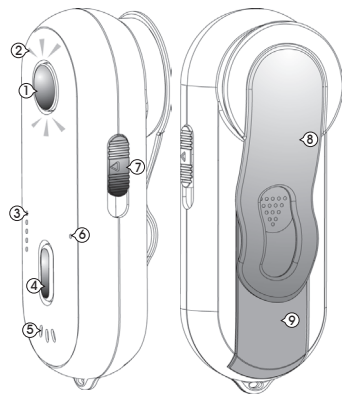


- Unité Parents
  - Unité Enfant
    - Chargeur d'Unité Enfant
      - Prise d'Adaptateur de chargeur d'Unité Enfant
        - Batterie rechargeable LIR2450 Li+ 3.6V pour l'Unité Enfant
        - 2 piles alcalines non rechargeables AAA 1.5V pour l'Unité Parent
        - Manuel Utilisateur

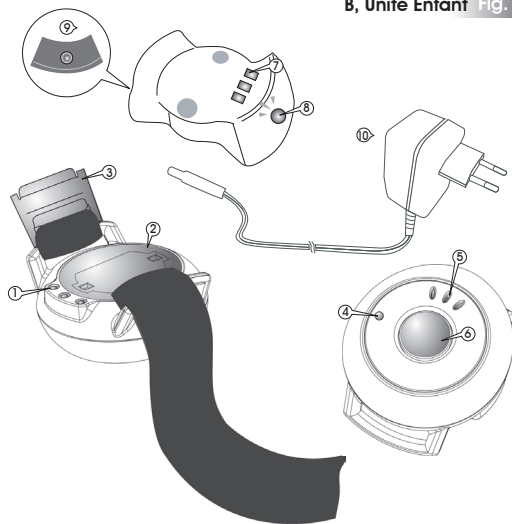


## Légende des fonctions

A, Unité Parent Fig. 1



B, Unité Enfant Fig. 2





## Légende des fonctions



### A, Unité Parent Fig. 1

- 1 Bouton trouver Bouton d'initiation Unité Enfant
- 2 Indicateur de direction LED
- 3 Indicateur de Canal LED
- 4 Bouton de sélection de Canal/bouton efface Unité Enfant
- 5 Haut parleur
- 6 Puissance/indicateur de batterie de faible puissance LED
- 7 Arrêt puissance/signal de proximité près/normal/
- 8 Attache de ceinture
- 9 couvercle de batteries



### B, Unité Enfant Fig. 2

- 1 capteur de charge
- 2 couvercle de batteries
- 3 Attache
- 4 Puissance/indicateur de batterie de faible puissance LED haut Parleur
- 5 Bouton de trouver/bouton d'invitation Unité Enfant
- 6 Capteur du Chargeur
- 8 Indicateur de chargeur LED
- 9 fiche de prise d'adaptateur
- 10 Prise d'adaptateur du Chargeur



## **Informations importantes**

1. Si vous voyagez à l'étranger, assurez-vous que la tension montrée sur la prise de l'adaptateur correspond à la puissance de forces locale avant le raccordement à l'alimentation d'énergie.
2. Pour empêcher toute décharge électrique, n'ouvrez pas le boîtier de l'Unité Enfant et de l'Unité Parent (à part les couvercles des compartiments batteries)
3. Pour prévenir tout risque d'explosion n'utilisez pas de batteries d'un type incorrect. Pour l'Unité Enfant, utilisez toujours la batterie rechargeable LIR2450 de 3.6V Li+. Pour l'Unité Parent, nous recommandons des piles alcalines non rechargeables de 1.5V AAA.

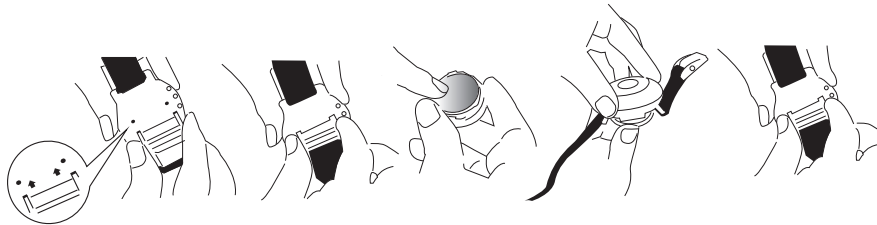


## Installation de l'Unité Enfant

**Quand vous employez ce produit pour la première fois, veuillez le mettre en charge.**

### 1. Comment installer les batteries

- (1) insérez les deux barrettes de ceinture dans le couvercle de batterie au le dos de l'Unité Enfant et puis ouvrez le couvercle de batterie en le tournant dans le sens contraire des aiguilles d'une montre.
- (2) Installez la batterie LIR2450 dans le couvercle de batterie et tournez les barrettes de ceinture dans le sens des aiguilles d'une montre pour combiner le couvercle de batterie avec l'Unité Enfant. (Veuillez noter les pôles +/- en installant la batterie.) A ce moment, la lumière LED rouge de puissance s'allume.

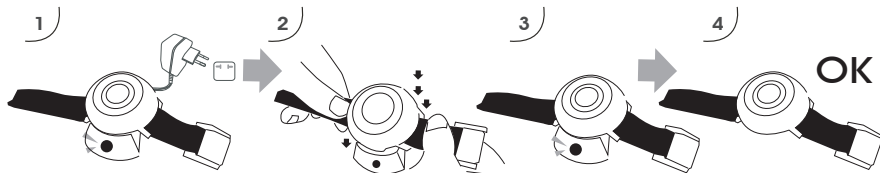




## Installation

### 2. Comment charger

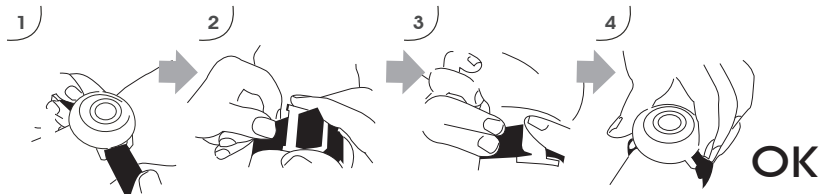
- (1) Insérez l'Adaptateur de Chargeur dans la prise électrique.
- (2) Branchez l'Adaptateur de Chargeur au Chargeur. L'indicateur de chargeur clignotera rouge et vert trois fois respectivement et puis s'éteindra.
- (3) Reliez l'Unité Enfant au Chargeur comme illustré, et l'indicateur de Charge passera au rouge pour indiquer qu'il est en Charge. Quand les voyants l'indicateur de Charge passe au vert, cela indique que la batterie est chargée complètement. (La batterie sera chargée entièrement dans un délai de suivant le degré de charge restant dans la batterie.)
- (4) Lorsque la batterie est complètement chargée, vous pouvez débrancher l'Unité Enfant du chargeur.





### 3. Comment utiliser la ceinture

- (1) Mettez l'Unité Enfant sur le poignet comme illustré.
- (2) Enroulez l'extrémité de la ceinture sans l'attache autour de votre poignet et enflez les barrettes à l'intérieur. Et ajustez alors la ceinture sur à la bonne tension.
- (3) Cliquez l'attache pour fixer la longueur de la ceinture.
- (4) Pliez la queue de la ceinture et collez-la sur la ceinture fixe.

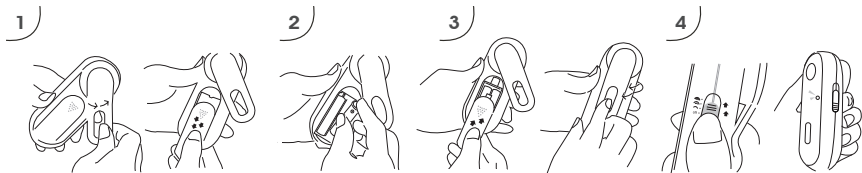




## Installation

### Installer l'Unité Parents

1. Ouvrez le couvercle des piles dans la direction suivant l'illustration.
2. Installez les deux piles alcalines AAA. dans l'emplacement des piles dans la bonne direction basée sur les pôles +/-.
3. Fermez le couvercle des piles sur l'Unité Parents.
4. Tournez le commutateur de l'Unité Parents à n'importe quelle distance de la gamme d'avertissement : près, normale ou loin. Alors, la lumière LED rouge de la puissance s'allume.
5. Vous pouvez porter l'Unité Parents à votre taille.

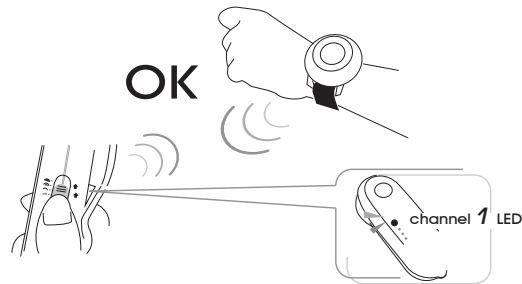






### Contrôlez la connexion

Lorsque l'Unité Parents et l'Unité Enfant sont interconnectés, l'indicateur du canal 1 s'allumera en rouge, et l'indicateur de direction clignotera en bleu, ce qui indique que la connexion est correcte.

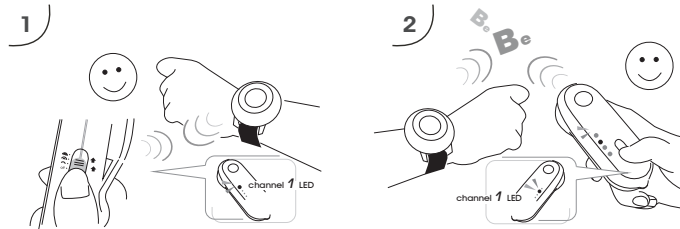




## **Utilisation du Traqueur Enfant**

Veillez ne pas mettre l'Unité Enfant dans sa poche quand vous l'employez. Veuillez passer l'Unité Enfant sur le poignet de votre enfant pour obtenir une meilleure indication de direction. Quand l'Unité Parents trouver l'Unité Enfant, tenez svp l'Unité Parents étroitement en position horizontale pour obtenir une meilleure indication de direction.





### Fonction de choix des Canaux

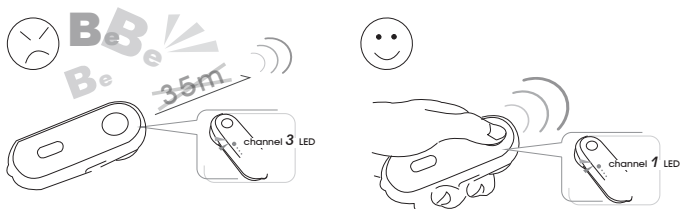
L'Unité Parents peut être reliée jusqu'à **4** Unités Enfant

a. Quand vous avez seulement une Unité Enfant :

Si l'Unité Parents ne correspond qu'à une Unité Enfant, l'Unité Enfant et l'Unité Parents seront placées sur le **canal 1** intérieure. Quand l'Unité Enfant est dans la marge d'avertissement de l'Unité Parents, la LED du **canal 1** s'allumera en rouge. Quand l'Unité Enfant est hors de la gamme d'avertissement de l'Unité Parents, le LED du **canal 1** clignotera rouge et le bipper fera bip-bip. Vous pouvez alors appuyer sur le bouton de choix de canal ou le bouton de recherche pour arrêter le bipper. Puisqu'il n'y a seulement qu'une unité d'enfant, quand vous appuyer sur le choix de canal, le canal ne sera pas commuté.



## Utilisation du Traqueur Enfant



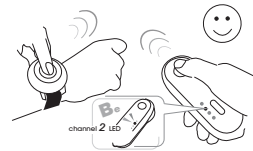
### b. Quand il y a plusieurs Unités Enfant :

Si l'Unité Parent correspond à plusieurs l'Unités Enfant, vous pouvez appuyer sur le bouton de choix de canal pour choisir l'Unité Enfant que vous voulez surveiller. Quand l'Unité Enfant choisie est dans la marge d'avertissement, le LED rouge du canal, s'allumera. Quand l'unité choisie d'enfant est hors de la gamme d'avertissement, le LED du canal clignotera en rouge. Les autres LED des canaux de l'Unité Parents correspondant aux l'Unité Enfant configurées s'allumeront en vert quand les Unités Enfant sont dans la marge d'avertissement. Quand les Unité Enfant sont hors de la gamme d'avertissement mais dans la marge de surveillance, le LED vert clignotera. Quand les unités d'enfant sont hors de gamme de surveillance valide, le canal LED s'éteindra.



### Ajouter des Unités Enfant

Quand vous voulez ajouter plus d'Unité Enfant à l'Unité Parents, retenez les boutons Trouver/initiation Unité enfant de l'Unité Parents et le bouton désiré de Trouver de l'Unité Enfant pendant dix secondes. Puis les bippers des Unités Parents et Enfant feront bip-bip pour vous informer que l'Unité Enfant est ajoutée. Le canal de la nouvelle Unité Enfant supplémentaire sera automatiquement placé sur le canal le plus bas restant.



### Retirer des Unités Enfant

Quand vous voulez retirer une des Unité Enfant à partir de l'Unité Parents, retenez svp le bouton de choix de canal/effacement Unité enfant pendant dix secondes. Alors le bipper de l'unité de parents fera bip-bip pour vous informer que l'Unité Enfant est enlevée. Veuillez noter quand vous retirer complètement, l'Unité Enfant et l'Unité Parents ne peuvent pas être connectées. Si vous voulez les relier, répétez svp les étapes décrivant l'ajout d'Unités d'enfant.

