

CAPTURING VIDEO

Film Mode

The transmitter will always power up in **Film Mode**. Film Mode is the easiest to fly (see "Controlling Aton" on page 7 for flight control instructions).

Install the included landing gear and fixed camera mount to the Aton; then, use your GoPro® or other action camera and accessories (not included)* to capture aerial video.

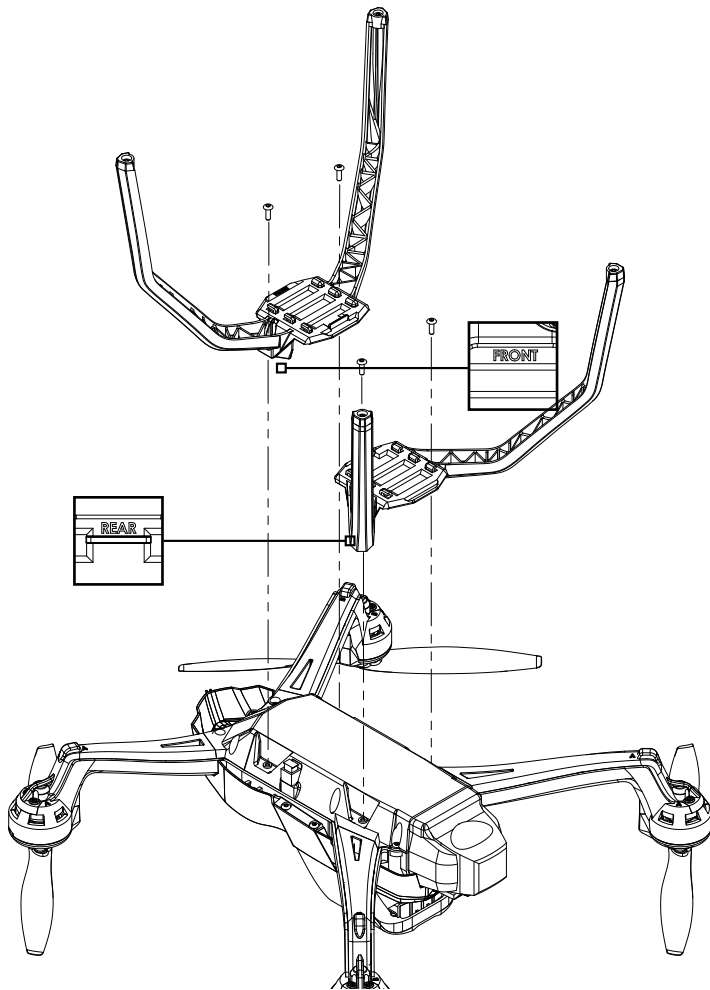
IMPORTANT: Consult local laws and ordinances before installing and operating any type of photograph-capable or video recording device on this model.

WARNING: To prevent radio interference and loss of control, always disable Wi-Fi on your GoPro® or other action camera (if so equipped) **BEFORE** flying the Aton.

WARNING: Some GoPro® cameras, specifically the Hero 3 and Hero 4 series with LCD screen, are known to produce radio frequency emissions that could interfere with Aton's ability to acquire GPS satellite communications. The Aton is equipped with shielding to help protect it from these radio frequency emissions. Use caution with these cameras and test in a safe area to be sure Aton is acquiring GPS satellites and setting a Return to Home location when these cameras are attached, powered on, and recording video. **DO NOT** operate Aton with these cameras if you are not connected to GPS (four green LEDs on the Status Bar).

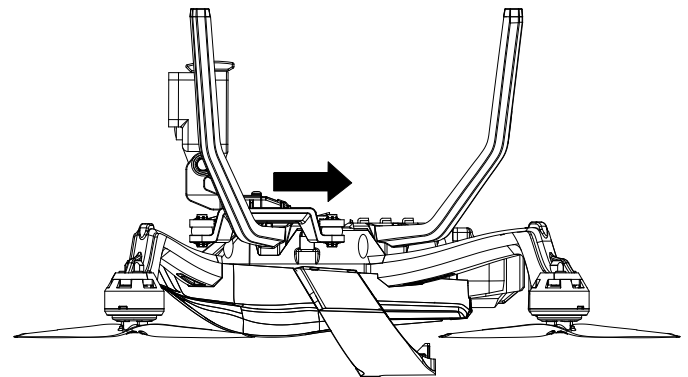
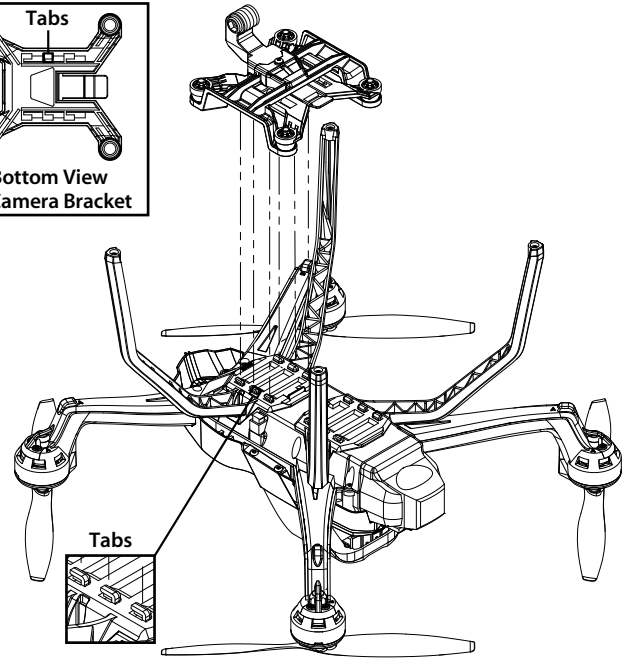
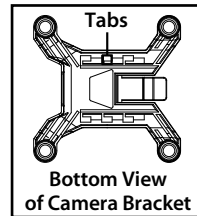
1. LANDING GEAR INSTALLATION

Use the included 2.6x8mm screws to mount the front and rear landing gear to the helicopter.

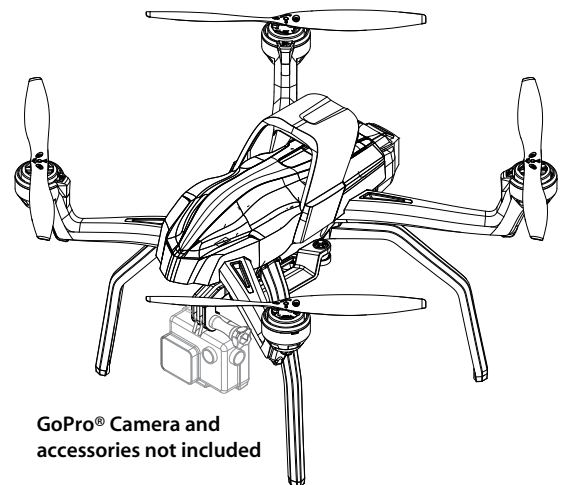


2. CAMERA BRACKET INSTALLATION

Attach the fixed camera mount to the front landing gear by aligning the tabs. Slide the mount toward the rear of the helicopter until the tabs snap into place.



FINAL ASSEMBLY



GoPro® Camera and accessories not included