

# Operating the i-Ball



## Switch on the i-Ball

You will find the power switch lever at the side of the i-Ball. Move it to the middle position to switch on the device.



Upper position switch "Off" - Power off the i-Ball.  
Middle position switch "On" - Power on the i-Ball.  
Lower position switch - "Config" - Configuration of SSID and password.

## Connect your PC or mobile phone(with Wi-Fi) to i-Ball

Connect your PC or mobile phone(with Wi-Fi) to the Trek i-Ball using your web browser, browse and key in <http://iball.com>

(a) Right click on the network icon on the system tray.



(d) PC connecting to the i-Ball.



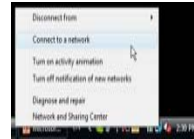
(b) Click refresh button to discover i-Ball, if your computer is not connected to i-Ball yet



(e) Once connected, PC is ready to view and play.



(c) Select "Trek i-Ball" and click "Connect".



(f) Enter <http://iball.com> to your web-browser.



## View and Play

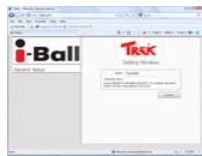
Depends on your PC or mobile phone configuration, choose between "Stream", "Java", or "Javascript" to view the video transmitted from i-Ball.

You could click on the control buttons (on your web browser) to adjust the contrast and brightness level of the i-Ball.

## SSID & Password setting

1. Move the power switch lever to the SSID position.  
2. Similarly, connect your PC or mobile phone (with Wi-Fi) to the i-Ball (Trek iBall), in your web browser, key in <http://iball.com> or <http://192.168.2.1/>

(a) General Setup menu allows you to the SSID and Security Key (for PC or mobile phone to access the i-Ball). In factory default, the SSID is "Trek iBall" and there is no Security Key.



(b) As an example, below shows the setting of SSID to "HomeWatch" and Security Key to "1234567890". Click "Save" to activate the new setting.

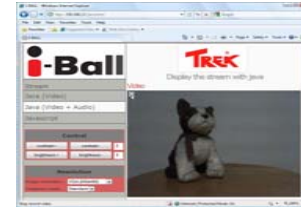


## Video recording and Snapshot

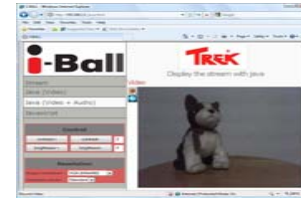
1. As before, use your web browser to view the video stream from i-Ball. Select the Java (Video + Audio) method to play the video from i-Ball.

2. Below describes how to record a video and how to take a snap shot with i-Ball.

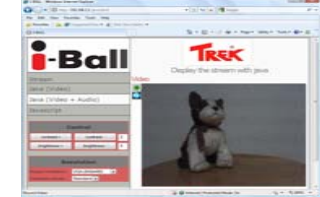
(a) Move the mouse cursor to the " " icons at the top left hand corner of the video window.



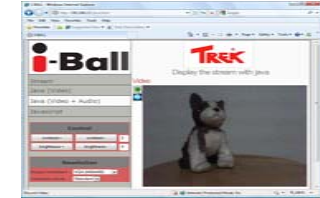
(c) Click the green Record button to start recording the video (and audio). Note that the Record button will turn red in colour.



(b) You would see a pull-down menu of the Record button and the Snap Shot button. When you are not recording, the Record button is green in colour.

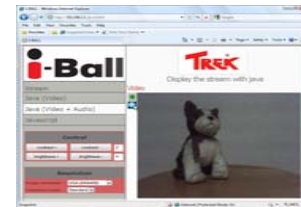


(d) Click on the red colour button to end the video recording. Note that the Record button will turn green again.

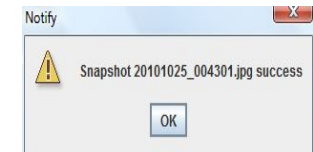


3. If you like to take a snap shot, click on the Snap Shot button, as described below

(a) Click the " " icons at the top left hand corner of the video window.



(b) You would get following window, telling you the file name of the captured picture.



4. In the Windows OS, you could find the video and picture files in your Documents folder  
If you double click the video file and your Windows Explorer could not play the format (in particular, Motion JPEG format), you would need to install a third party video codec, e.g., the Media Player Codec Pack from <http://www.mediaplayercodecpack.com/>.

THIS DEVICE COMPLIES WITH PART 15 OF THE FCC RULES. OPERATION IS SUBJECT TO THE FOLLOWING TWO CONDITIONS:

- (1) THIS DEVICE MAY NOT CAUSE HARMFUL INTERFERENCE AND
- (2) THIS DEVICE MUST ACCEPT ANY INTERFERENCE RECEIVED, INCLUDING INTERFERENCE THAT MAY CAUSE UNDESIRE OPERATION.

### FCC Radiation Exposure Statement

This equipment complies with FCC RF radiation exposure limits set forth for an uncontrolled environment. This equipment should be installed and operated with a minimum distance of 20 centimeters between the radiator and your body.

TREK 2000 International LTD - 30 Loyang Way #07-13/14/15 Singapore 508769

Tel : (65)-6546 6088 Fax : (65)-6546 6066

Sales enquiries : [sales@trek2000.com.sg](mailto:sales@trek2000.com.sg) | Technical support : [support@trek2000.com.sg](mailto:support@trek2000.com.sg)  
[www.flu-card.com](http://www.flu-card.com) | [www.trek2000.com.sg](http://www.trek2000.com.sg) | [www.thumbdrive.com](http://www.thumbdrive.com)

\*Specifications and appearance are subject to change without notice

TREK 2000 International LTD - 30 Loyang Way #07-13/14/15 Singapore 508769

Tel : (65)-6546 6088 Fax : (65)-6546 6066

Sales enquiries : [sales@trek2000.com.sg](mailto:sales@trek2000.com.sg) | Technical support : [support@trek2000.com.sg](mailto:support@trek2000.com.sg)  
[www.flu-card.com](http://www.flu-card.com) | [www.trek2000.com.sg](http://www.trek2000.com.sg) | [www.thumbdrive.com](http://www.thumbdrive.com)

\*Specifications and appearance are subject to change without notice