

AVERATEC™

All-In-One PC User's Guide



Regulations Information

FCC-B Radio Frequency Interference Statement

This equipment has been tested and found to comply with the limits for a Class B digital device, pursuant to part 15 of the FCC rules. These limits are designed to provide reasonable protection against harmful interference in a residential installation. This equipment generates, uses and can radiate radio frequency energy and, if not installed and used in accordance with the instructions, may cause harmful interference to radio communications. However, there is no guarantee that interference will not occur in a particular installation. If this equipment does cause harmful interference to radio or television reception, which can be determined by turning the equipment off and on, the user is encouraged to try to correct the interference by one or more of the following measures :

- ✓ Reorient or relocate the receiving antenna.
- ✓ Increase the separation between the equipment and receiver.
- ✓ Connect the equipment into an outlet on a circuit different from that to which the receiver is connected.
- ✓ Consult the dealer or an experienced radio TV technician for help.

Note

- ✓ *The changes or modifications not expressly approved by the party responsible for compliance could void the user's authority to operate the equipment.*
- ✓ *Shield interface cables and AC power cord, if any must be used in order to comply with the emission limits.*

FCC RF Radiation Exposure Statement

This equipment complies with FCC RF radiation exposure limits set forth for an uncontrolled environment. This equipment should be installed and operated with a minimum distance of 20 centimeters between the radiator and your body. This transmitter must not be co-located or operated in conjunction with any other antenna or transmitter.

FCC Conditions

This device complies with part 15 of the FCC Rules. Operation is subject to the following two conditions :

1. This device may not cause harmful interference.
2. This device must accept any interference received, including interference that may cause undesired operation.



For better environmental protection, waste batteries should be collected separately for recycling or special disposal.

Optical Device Drive Notice

CAUTION

- ✓ *This appliance contains a laser system and is classified as a "CLASS 1 LASER PRODUCT." To use this model properly, read the instruction manual carefully and keep this manual for your future reference. In case of any trouble with this model, please contact your nearest "AUTHORIZED service station." To prevent direct exposure to the laser beam, do not try to open the enclosure.*

Macrovision Notice

This product incorporates copyright protection technology that is protected by U.S. patents and other intellectual property rights. Use of this copyright protection technology must be authorized by Macrovision, and is intended for home and other limited viewing uses only unless otherwise authorized by Macrovision. Reverse engineering or disassembly is prohibited.

Safety Instructions

1. Read the safety instructions carefully and thoroughly.
2. Save this User Guide for possible use later.
3. Keep this equipment away from humidity and high temperature.
4. Lay this equipment on a stable surface before setting it up.
5. The openings on the enclosure are used for air convection and to prevent the equipment from overheating. Do not cover the openings.
6. Make sure that the power voltage is within its safety range and has been adjusted properly to the value of 100-240V before connecting the equipment to the power inlet.
7. Place the power cord in a way that people are unlikely to step on it. Do not place anything on the power cord.
8. Always unplug the power cord before inserting any add-on card or module.
9. All cautions and warnings on the equipment should be noted.
10. If any of the following situations arises, get the equipment checked by a service personnel:
 - ✓ The power cord or plug is damaged.
 - ✓ Liquid has penetrated into the equipment.
 - ✓ The equipment has been exposed to moisture.
 - ✓ The equipment has not worked well or you can not get it work according to Users Manual.
 - ✓ The equipment was dropped and damaged.
 - ✓ The equipment has obvious signs of breakage.
11. Never pour any liquid into the opening that could damage the equipment or cause an electrical shock.

-
12. Do not leave the equipment in an unconditioned environment with a storage temperature of 60°C (140°F) or above, which may damage the equipment.
 13. To prevent explosion caused by improper battery replacement, use the same or equivalent type of battery recommended by the manufacturer only.

WEEE Statement

(English) Under the European Union ("EU") Directive on Waste Electrical and Electronic Equipment, Directive 2002/96/EC, which takes effect on August 13, 2005, products of "electrical and electronic equipment" cannot be discarded as municipal waste anymore and manufacturers of covered electronic equipment will be obligated to take back such products at the end of their useful life.

(Deutsch) Gemäß der Richtlinie 2002/96/EG über Elektro- und Elektronik-Altgeräte dürfen Elektro- und Elektronik-Altgeräte nicht mehr als kommunale Abfälle entsorgt werden, die sich auf 13. August, 2005 wirken. Und der Hersteller von bedeckt Elektronik-Altgeräte gesetzlich zur gebrachten Produkte am Ende seines Baruchbarkeitsdauer zurückzunehmen.

(Français) Au sujet de la directive européenne (EU) relative aux déchets des équipement électriques et électroniques, directive 2002/96/EC, prenant effet le 13 août 2005, que les produits électriques et électroniques ne peuvent être déposés dans les décharges ou tout simplement mis à la poubelle. Les fabricants de ces équipements seront obligés de récupérer certains produits en fin de vie.

(English) As of this writing, the e-waste legislation is undergoing review in the United States Congress. "WEEE" legislation for the United States will be limited to the individual States.

(Русский) В соответствии с директивой Европейского Союза (ЕС) по предотвращению загрязнения окружающей среды использованным электрическим и электронным оборудованием (директива WEEE 2002/96/EC), вступающей в силу 13 августа 2005 года, изделия, относящиеся к электрическому и электронному оборудованию, не могут рассматриваться как бытовой мусор, поэтому производители вышеперечисленного электронного оборудования обязаны принимать его для переработки по окончании срока службы.

(Español) Bajo la directiva 2002/96/EC de la Unión Europea en materia de desechos y/o equipos electrónicos, con fecha de rigor desde el 13 de agosto de 2005, los productos clasificados como "eléctricos y equipos electrónicos" no pueden ser depositados en los contenedores habituales de su municipio, los fabricantes de equipos electrónicos, están obligados a hacerse cargo de dichos productos al término de su período de vida.

(Nederlands) De richtlijn van de Europese Unie (EU) met betrekking tot Vervuiling van Elektrische en Electronische producten (2002/96/EC), die op 13 Augustus 2005 in zal gaan kunnen niet meer beschouwd worden als vervuiling. Fabrikanten van dit soort producten worden verplicht om producten retour te nemen aan het eind van hun levenscyclus..

(Srpski) Po Direktivi Evropske unije ("EU") o odbačenju elektronske i električne opreme, Direktiva 2002/96/EC, koja stupa na snagu od 13. Avgusta 2005, proizvodi koji spadaju pod "elektronsku i električnu opremu" ne mogu više biti odbačeni kao običan otpad i proizvođači ove opreme biće prinuđeni da uzmu natrag ove proizvode na kraju njihovog uobičajenog veka trajanja.

(Polski) Zgodnie z Dyrektywą Unii Europejskiej ("UE") dotyczącą odpadów produktów elektrycznych i elektronicznych (Dyrektywa 2002/96/EC), która wchodzi w życie 13 sierpnia 2005, tzw. "produkty oraz wyposażenie elektryczne i elektroniczne" nie mogą być traktowane jako śmieci komunalne, tak więc producenci tych produktów będą zobowiązani do odbierania ich w momencie gdy produkt jest wycofywany z użycia.

(TÜRKÇE) Avrupa Birliği (AB) Kararnamesi Elektrik ve Elektronik Malzeme Atığı, 2002/96/EC Kararnamesi altında 13 Ağustos 2005 tarihinden itibaren geçerli olmak üzere, elektrikli ve elektronik malzemeler diğer atıklar gibi çöpe atılmayacak ve bu elektronik cihazların üreticileri, cihazların kullanım süreleri bittikten sonra ürünleri geri toplamakla yükümlü olacaktır.

(ČESKY) Podle směrnice Evropské unie ("EU") o likvidaci elektrických a elektronických výrobků 2002/96/EC platné od 13. srpna 2005 je zakázáno likvidovat "elektrické a elektronické výrobky" v běžném komunálním odpadu a výrobci elektronických výrobků, na které se tato směrnice vztahuje, budou povinni odebírat takové výrobky zpět po skončení jejich životnosti.

(MAGYAR) Az Európai Unió („EU“) 2005. augusztus 13-án hatályba lépő, az elektromos és elektronikus berendezések hulladékairól szóló 2002/96/EK irányelve szerint az elektromos és elektronikus berendezések többé nem kezelhetők lakossági hulladékként, és az ilyen elektronikus berendezések gyártói köteleessé válnak az ilyen termékek visszavételére azok hasznos élettartama végén.

(Italiano) In base alla Direttiva dell'Unione Europea (EU) sullo Smaltimento dei Materiali Elettrici ed Elettronici, Direttiva 2002/96/EC in vigore dal 13 Agosto 2005, prodotti appartenenti alla categoria dei Materiali Elettrici ed Elettronici non possono più essere eliminati come rifiuti municipali: i produttori di detti materiali saranno obbligati a ritirare ogni prodotto alla fine del suo ciclo di vita..

Table of Content

What is the Averatec All-In-One PC?	1
Turning On and Shutting Off	2
Using the Wireless Keyboard, Mouse and Remote Control	4
Adjusting the Brightness of the Monitor	8
Adjusting the Speaker Volume	9
Connecting Your Multi-Channel Speakers	10
Using the Optical Drive	12
Connect to the Internet	15
Using Your Webcam	16
Using the Wireless LAN	18
Using the Multi-Card Reader	20
Watching TV	21
System SETUP	25
Expanding the Main Memory	32

What is the Averatec All-In-One PC?

The Averatec All-In-One PC is an all inclusive desktop PC that is designed for quick installation and easy use without taking up much desk space.

Features

Integrated PC and LCD Monitor

The Averatec All-In-One PC is equipped with a 22" LCD monitor and fully functional PC. Nothing else is needed. The All-In-One PC is designed to be a complete plug-and-play system.

Less Cabling and More Portability

The Averatec All-In-One PC eliminates all those messy cables, enhances system portability and results in less clutter.

Everything's Included!

The Averatec All-In-One PC includes everything necessary to be immediately productive. An industry-leading 22" widescreen LCD monitor coupled with an advanced Intel® Pentium® processor to handle all your entertainment and productivity applications. Additionally, the Averatec All-In-One PC comes with the following features:

- A huge, super-fast hard drive for all your storage requirements.
- A convenient slot-loading Dual Layer DVD burner, making access a breeze.
- A web cam for video chatting, recording and picture taking.
- A wireless full-size keyboard and mouse for ultimate comfort.
- A wireless remote to drive your Microsoft® Media Center experience.

Turning On and Shutting Off

Turning on

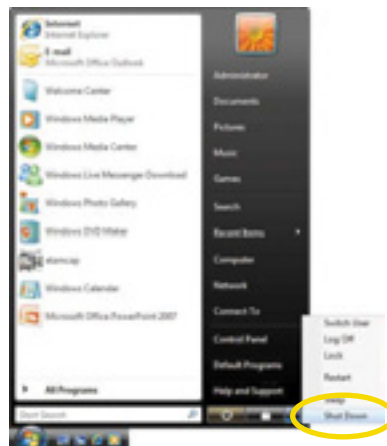
Press the power button on the right side of the PC.



Turning off

Case 1 Click <Start> to turn off computer.

Click start and select <Shut Down>. Turn off computer screen displays.



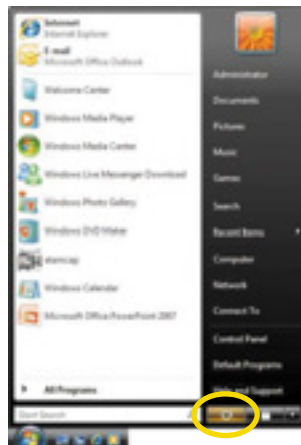
Case 2 Press the power button on the right side of the PC.

After closing all programs, the PC will be turned off. If the system is operating abnormally, you can reboot the PC by holding down the Power button until the PC turns off. Then press the Power button again to boot back up.



Case 3 Power saving mode.

Saves your session and puts the computer in a lower-power state so that you can quickly resume working.



Using the Wireless Keyboard, Mouse and Remote Control

Inserting the batteries

To use the wireless keyboard, mouse and remote control, you will need to install the batteries.

1. Place the wireless keyboard, mouse and remote control upside down and remove the battery covers from them.
2. Insert the batteries into the wireless devices. Be sure to install the battery with the correct polarity.
3. Replace the cover of the wireless devices.

Wireless mouse



Wireless keyboard



Remote control



-
4. Set the ON/OFF switch to the ON position on the bottom side of the mouse.



Turning on the computer

Turn on the computer by pressing the power button on the right side, then check each wireless device works properly with your computer.



Re-setting the ID Channel with Your Wireless Devices

Your wireless devices were connected and sync'd to the computer at the factory setting, so you can use them with your computer without any additional sync'ing.

If you need to re-set the ID channel of your system and wireless devices for any reason, follow these instructions:

Wireless keyboard

1. Press the connect button on the right side of the computer with a tip of a pencil or paperclip for 1 to 2 seconds.
2. Press the connect button on the bottom of the wireless keyboard for 2 to 5 seconds.



Wireless mouse

1. Turn on the wireless mouse.
2. Press the connect button on the right side of the computer with a tip of a pencil or paperclip for 1 to 2 seconds.
3. Press the connect button on the bottom of the wireless mouse for 2 to 5 seconds



Remote control

1. Press the connect button on the right side of the computer with a tip of a pencil or paperclip for 1 to 2 seconds.
2. Press the <Back> and <More> buttons simultaneously for 3 to 5 seconds on the remote control.

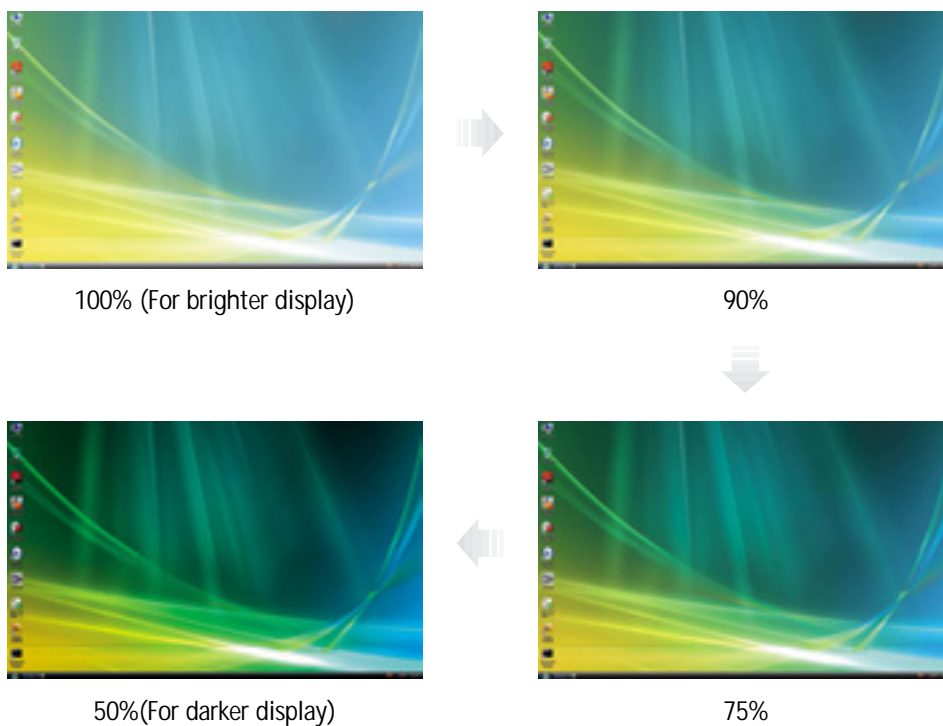


Adjusting the Brightness of the Monitor

You can adjust the brightness by clicking the brightness control button on the right side of the LCD panel. There are 4 levels of LCD brightness adjustment available. Each press of the brightness control button will cycle through each level.



Using the brightness control button



Adjusting the Speaker Volume

The Speaker volume level can be adjusted easily with the button located on the bottom side of the LCD panel.

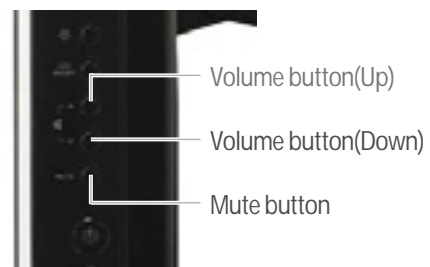


Volume button (Up/Down)

To adjust the volume level, press the top volume button to increase the volume level and the bottom volume button to decrease the volume level.

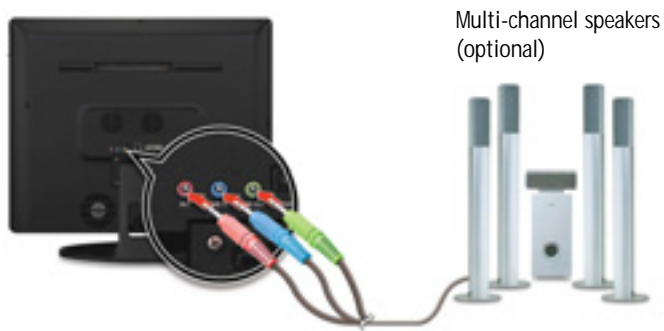
Mute button

To mute the speaker sound, press it once to enable mute and press it again to disable mute.



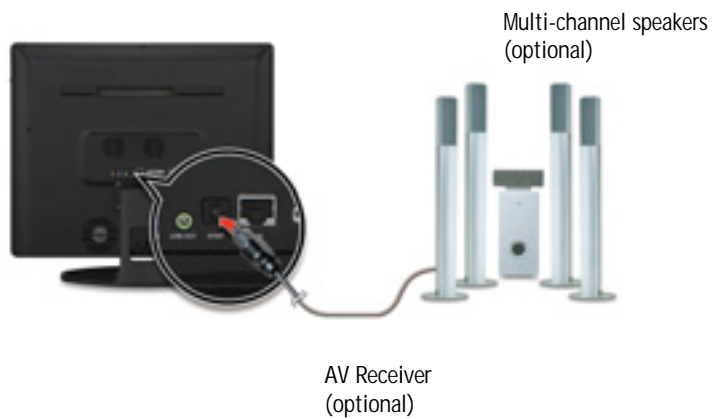
Connecting Your Multi-Channel Speakers

Connect the speakers to microphone, line-in and line-out jacks



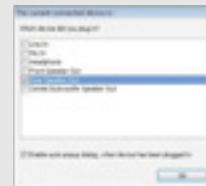
Or

Connect the speakers to SPDIF jack



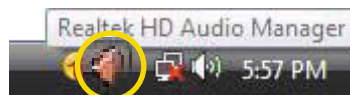
Note

- ✓ Connecting the speakers will cause a window to appear confirming detection of the device.
- ✓ When configured for 5.1 audio speaker setup, the MICROPHONE, LINE-IN and LINE-OUT all function as INPUT JACKS).



To use multi-channel speakers you should verify that the sound setting is adjusted correctly. To set the multi-channel speakers, follow these steps.

1. Double click **Realtek HD Audio Manager** icon.



2. Click Speaker Configuration tab and click 5.1 speaker.



3. Click **OK** button.



Adjusting volume

The Averatec All-In-One PC has built-in speakers on the front and back of the system. You can adjust the volume by clicking the volume adjustment buttons located on the right side of the LCD panel and / or by using the volume control feature in Windows Vista.

Using the Optical Drive

The Averatec All-in-One PC is fitted with a slot-type or slim-type optical drive (COMBO or DVD Recorder).

Slot-loading CD drive

1. Insert CD/DVD

With the system powered on, insert a CD/DVD into the CD/DVD drive. (Slide the CD/DVD into the system with the disc label facing up. If the label side is facing down, the CD will be ejected automatically after two minutes.)



2. Eject CD/DVD

Press the <Eject CD/DVD> button to eject the CD.



Tray-loading CD drive

1. Press the Eject button of the CD/DVD drive.



2. **Insert CD/DVD**

Insert CD/DVD in the CD/DVD drive and place CD/DVD label side front. Press the CD/DVD Drive.



3. **Eject CD/DVD**

Press the Eject button of the CD/DVD drive on the right side of the Averatec All-In-One PC. You can then remove the CD/DVD.

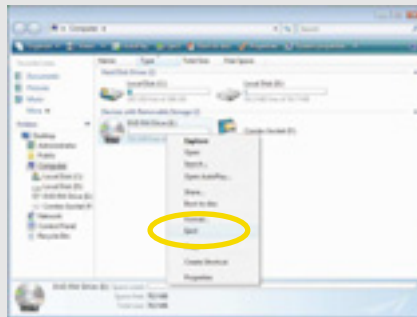
Note

- ✓ This system is fitted with a slot-loading or tray-loading optical drive. CDs that are not of the standard size cannot be used in this product.



CD 120mm

- ✓ If you can not eject a CD/DVD from the drive, click Start, choose **Computer**, right-click on the CD/DVD drive that the CD/DVD is in and choose **Eject** in the popup menu.



- ✓ Make sure CD/DVD is not inserted upside down. (CD label side facing toward front of PC).
- ✓ Labels on CD/DVD may cause noise when CD/DVD drive is working. Remove labels on CD/DVD for safe use.

Connect to the Internet

1. Press the power button and the Windows Vista start screen will appear. Connect a LAN cable to the LAN connector as shown in the figure below.



2. Configure the communication settings for the system based on your communication environment. When connecting to the Internet via an internet service provider, contact the service provider for more information on required communication settings.
3. Launch Internet Explorer or other communication software.



Using Your Webcam

You can take photos and chat with your friends.

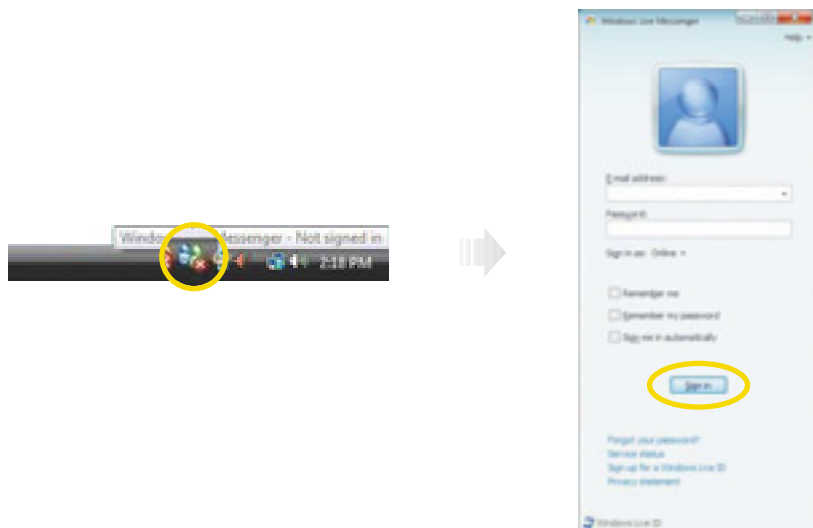
Take photos

Double click the Webcam program. An amber light on the webcam LED indicates your PC is ready to take photos.

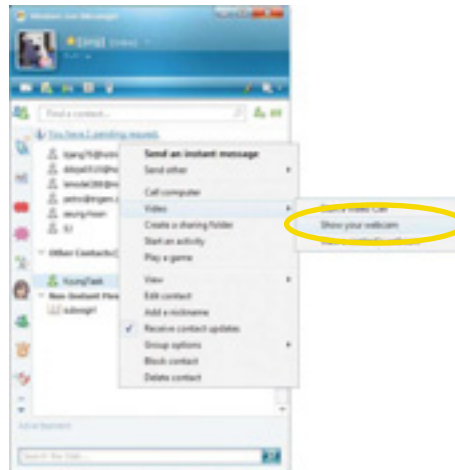
Video chatting

To chat with video, both your system and the system of the person you want to chat with must have a web camera or a CCD camera installed. You also need to download and install a messenger program. The screen that you will see varies depending on the type of the messenger program you're using.

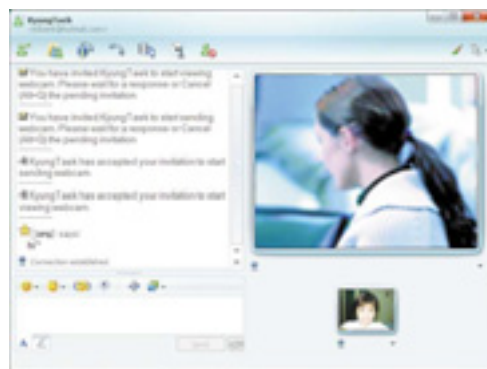
1. Run the messenger program to register your user email address. When the messenger is ready, double-click on the **Windows Messenger** icon. Select **Sign in**.



2. Right-click on your chat partner and then select Show your webcam, as illustrated below.



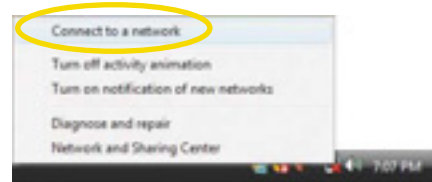
3. Now you're ready to start chatting!



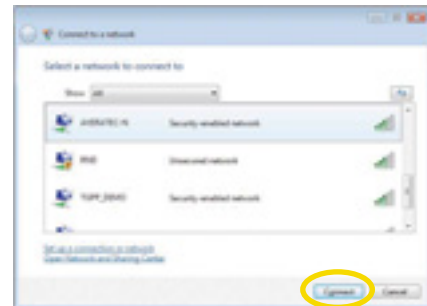
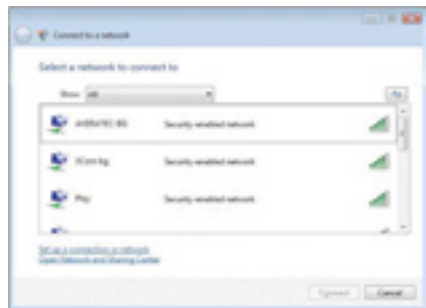
Using the Wireless LAN

To use a wireless network in an office environment where APs (Access Points) are installed, see the following instructions. (The example used here explains how to use the basic Windows configuration features to configure the system. You can also use the program that comes with the wireless LAN card to configure the network.)

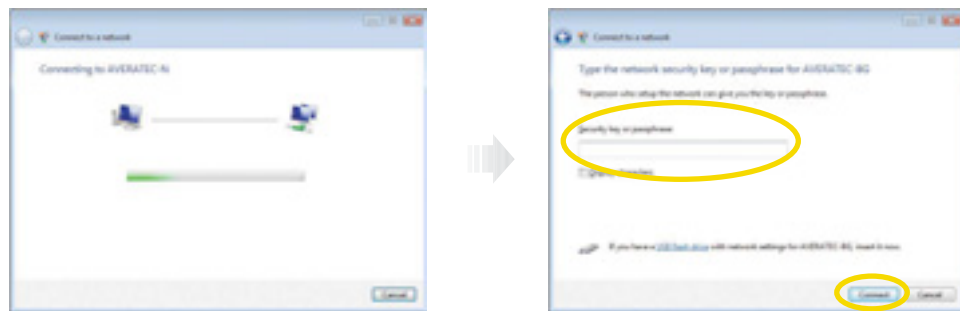
1. Right-click on the **Wireless Network** icon on the status bar, and then select **Connect to a network**.



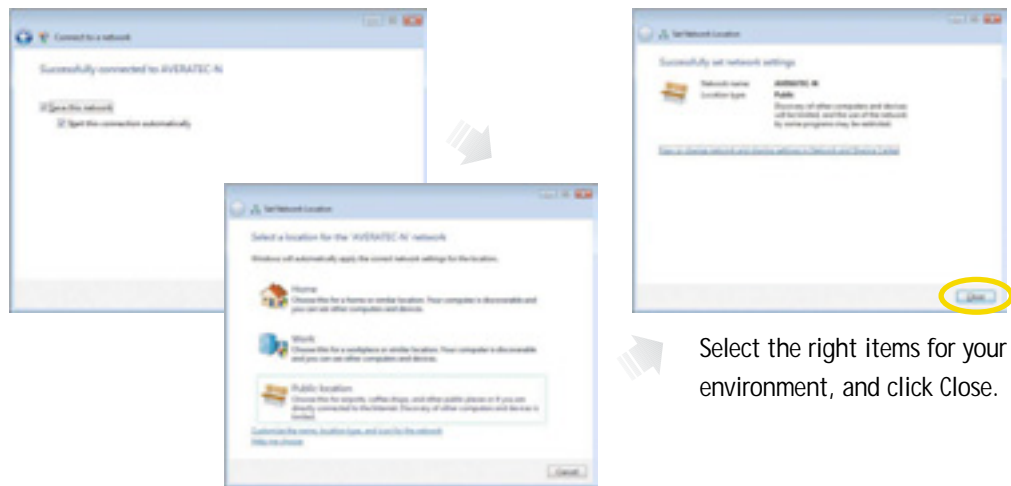
2. If there is an AP-enabled environment, a list of available APs will appear. Click the item you want to connect to, and click **Connect**.



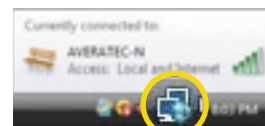
-
3. A window will appear displaying **Connecting to xxxxx** (Where XXXXX is the name of your router/AP). If a **Security key or password** is set up, a window will appear where you can enter the security key or password. Enter the security key or password, and click **Connect**. (The window will not appear if no security key or password is set up.)



4. When the **Successfully connected to xxxxx** window appears, confirm the settings and then click **Close**.



5. Once connection is successfully established, the network icon on the status bar will change its shape.



Using the Multi-Card Reader

Averatec's All-In-One PC accepts 4 types of multi-media cards into the multi-card reader slot on the right side of the PC.

Multi-Media card

SD (Secure Digital™), MS-PRO™, MS-PRO™ Duo, MS(Memory Stick™), MMC(MultiMediaCard™), RS-MMC

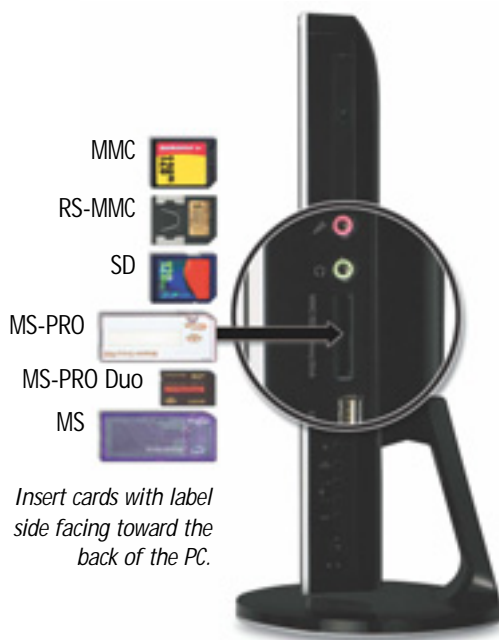
Inserting the multi-media card

To insert correctly, refer to the pictures. The cards are not inserted completely, the tip of the cards will remain out of the slot. (Insert cards with label side facing toward the back of the PC.)

Removing multi-media card

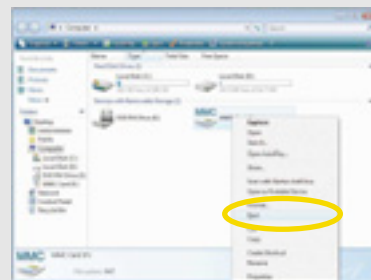
Grip the tip of the card and take it out from the slot.

(Do not remove the card while you are using it, as you could corrupt the contents.)



Note

- ✓ Click the <Start> menu and select **Computer**. On the **Computer** screen, right-click on the **Combo Socket** icon and select **Eject**.
- ✓ This does not physically eject the media card. However, it does ensure all data is written to the media card prior to the physical removal of the card



Watching TV

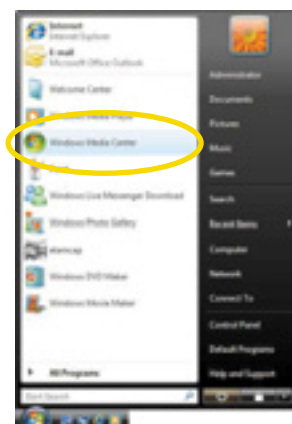
You can connect a TV Antenna to the PC.

Connecting an external antenna cable directly to the system to watch TV

1. Connect Antenna cable to TV tuner.



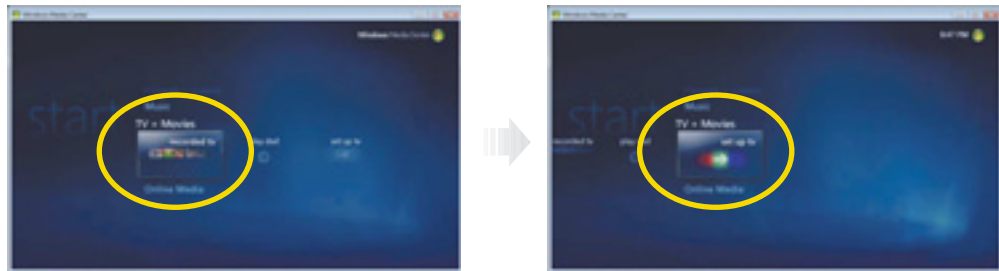
2. Click **Start**, and then select **Windows Media Center**.



Note

✓ When the **Start** screen appears, on your first use, select **Quick Installation** and then click <OK>.

3. Click **TV + Movies**. To set up the TV , follow the instructions on the screens.



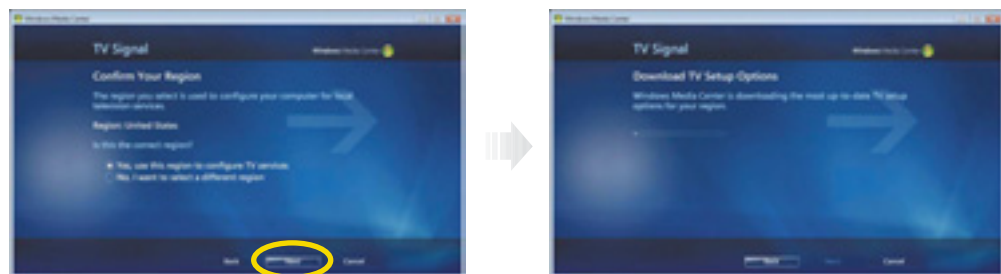
4. When the TV Signal screen appears, click **Next**.



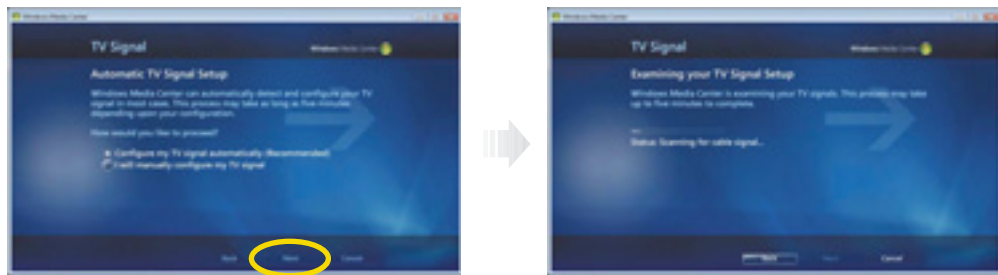
Note

✓ *If you haven't already done so, connect to the Internet.*

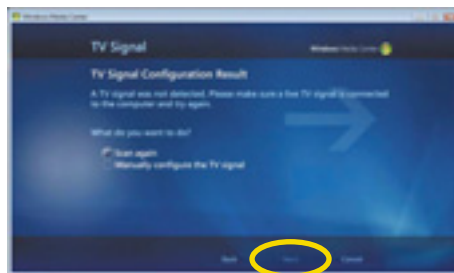
5. When the **Confirm Your Region** screen appears, choose your region and then click **Next**.



-
6. When the **Automatic TV Signal Setup** screen appears, select how you would like to proceed and then click **Next**. (Choosing **Configure my TV signal automatically** is recommended here.)



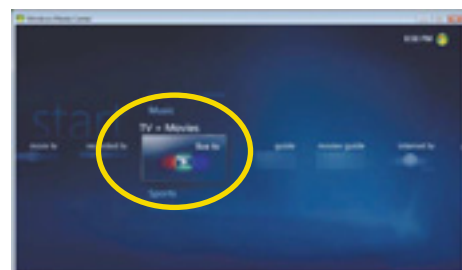
7. If TV signals are configured normally, select **Yes** and then click **Next**. (If necessary, you can manually configure TV signals.)



8. When the **Guide** screen appears, follow the online instructions to install the program. (The installation method varies depending on the user environment.)



9. In the **TV+Movies** menu, move to **live TV** and click on it. Now you are set to watch TV.



System SETUP

For System Setup, setup only the items that you need. Note that incorrect settings of Setup items could result in system malfunction.

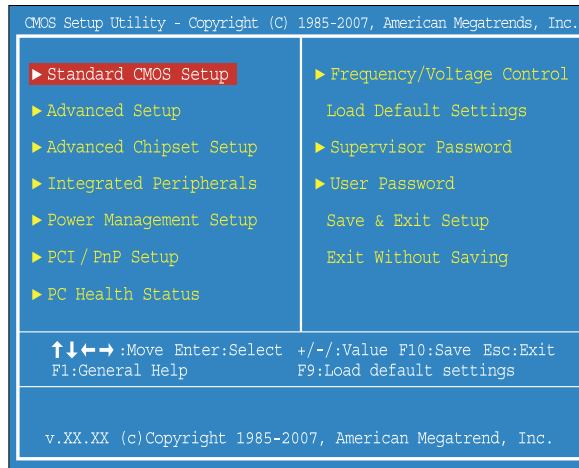
Start System Setup

After powering on the system, press to enter the System Setup screen.

BIOS Action Keys

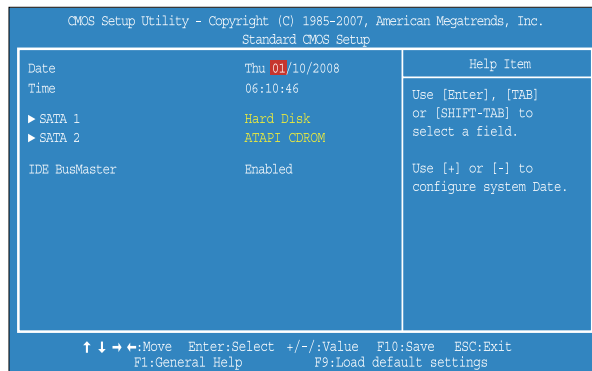
Function Key	Command	Description
ESC	Exit	Leaves a sub-menu to return to the previous menu OR exits the BIOS setup while saving changes.
Enter	Select	Shows the Sub Menu
F1	General Help	Shows the Help Screen
F10	Save and Exit	Saves changes and reboots the computer.
<Tab>	Select a field	Selects the next field.
↑ ↓ → ←	Select an item	Selects the next item.
-, +	value	Selects the next value within a field.

BIOS Setup Menu



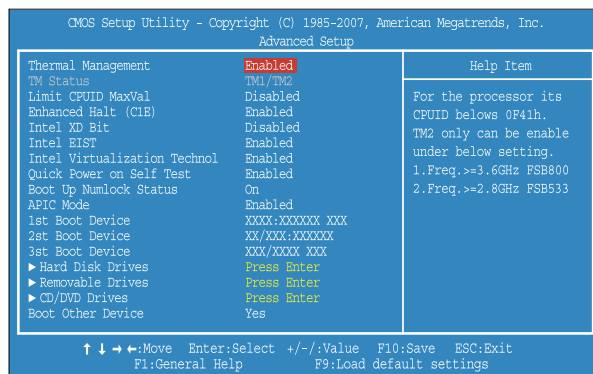
Standard CMOS Setup Menu

Sets most standard specifications for the system, such as the time, date, HDD settings, and FDD size and capacity.



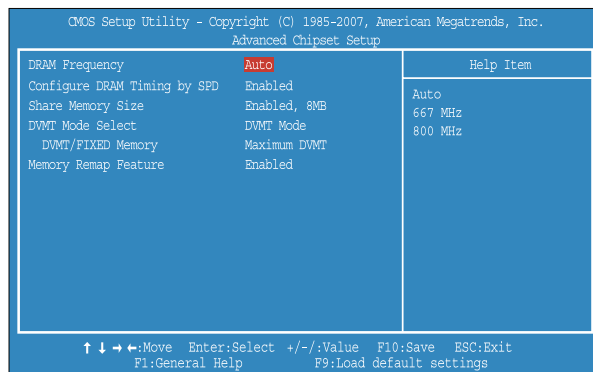
Advanced Setup Menu

Sets up key items related to the system's performance, and options about booting.



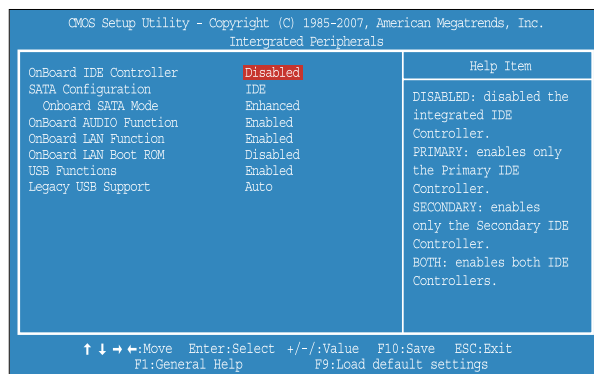
Advanced Chipset Setup Menu

Consists of DRAM Frequency, Configure DRAM Timing by SPD, and Share Memory Size.



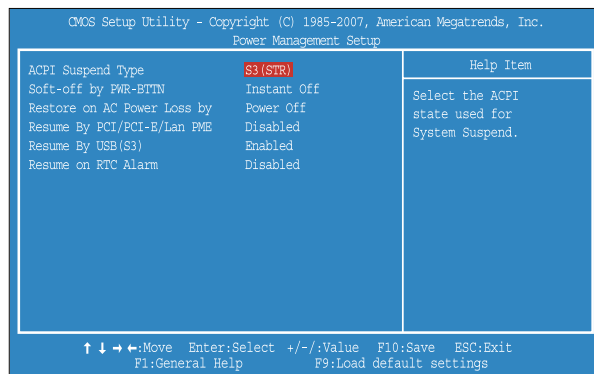
Integrated Peripherals Menu

Sets up options about the chipset built into the main board. Sets up options about the internal speaker.

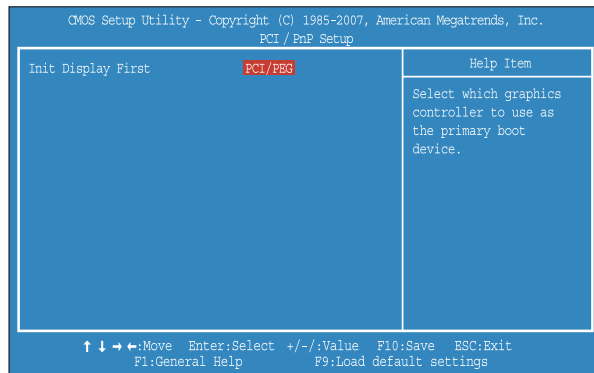


Power Management Setup Menu

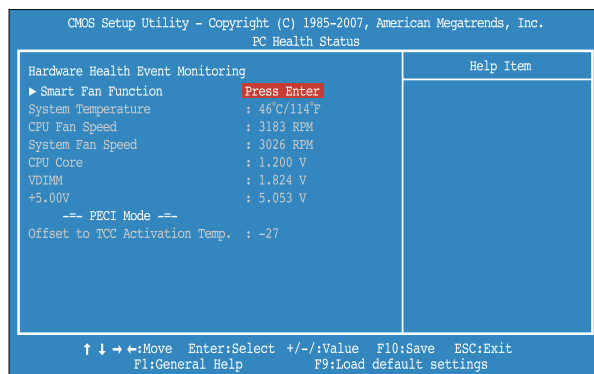
Sets up options for managing system power.



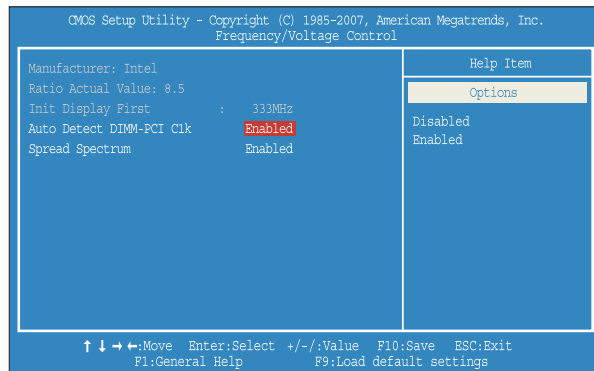
PCI/PnP Setup Menu



PC Health Status Menu

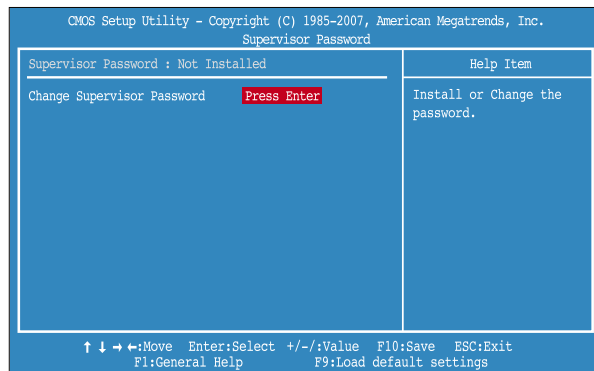


Frequency/Voltage Control Menu



Supervisor/User Password Menu

Sets up a password to prevent any unauthorized user from accessing the system.



Set up Password

1. On the initial System Setup screen, press < → > to go to the **Supervisor Password** menu and then press <Enter>.
2. Go to **Change Supervisor Password**, and then press <Enter>.

3. On the following screen, enter the password and then press <Enter>.

Enter New Password	<input type="password"/>
Confirm New Password	<input type="password"/>

Then enter the same password again and press <Enter>.

4. If you entered the correct password, the following window will appear. Press <Enter>.

Password installed
[OK]

This completes setting up a password.

The Supervisor Password is at a higher level than the User Password.

Supervisor Password is

Shows the setup status of the Supervisor Password: Installed, if a Supervisor Password is set, or Not Installed.

User Password is

Shows the setup status of the User Password: Installed, if a User Password is set, or Not Installed.

Change Supervisor Password

Setting up a password helps you prevent unauthorized users from accessing the system. In the factory settings, no password is installed. A password can have up to six alphanumeric characters and/or numbers.

Expanding the Main Memory

There may come a time when you want to expand the main memory capacity. When expanding the main memory, make sure that the specifications of any newly added memory and the currently installed memory are the same. The following instructions are provided to those who are familiar with system assembly/disassembly in order to help them to find the memory specification. If you are not familiar with system assembly/disassembly or do not know your memory specification, you should not perform the memory upgrade. Please contact customer support for assistance.

The motherboard has two DIMM sockets, which can accommodate up to 4.0 GB of memory. If new memory is installed, its type, size and speed are automatically checked by the system BIOS.

Each of the DIMM sockets supports the following memory specification:

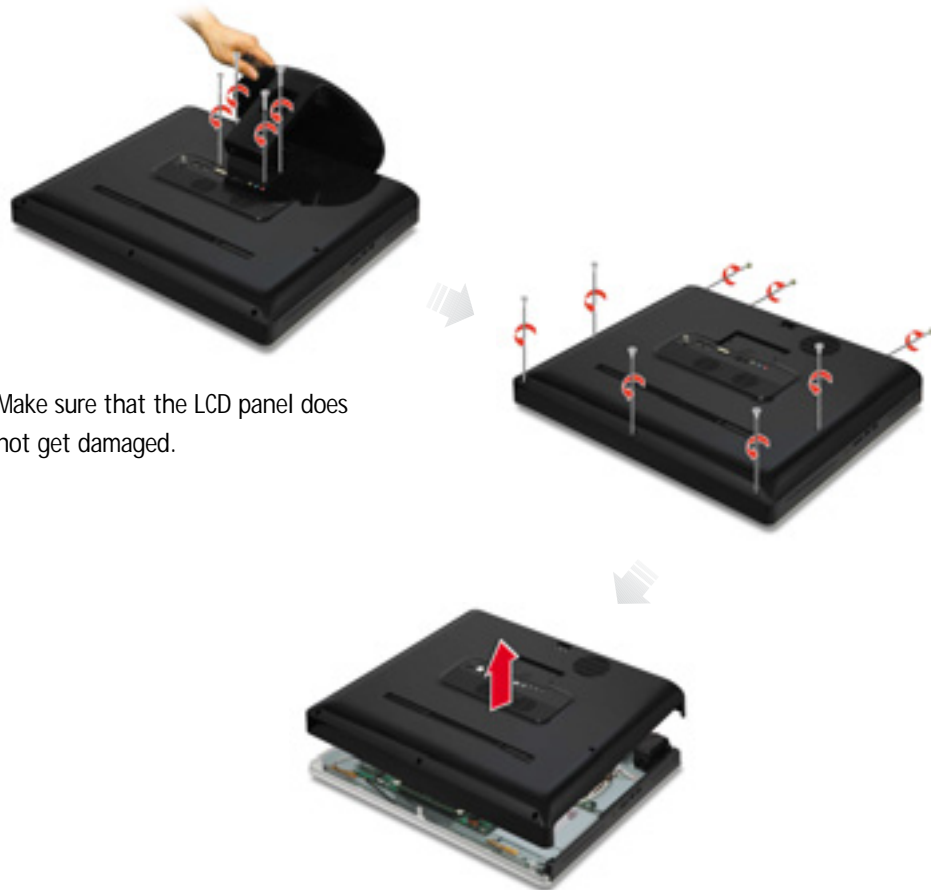
240-pin DDR2 SDRAM Socket, Dual-Channel Support, 667/800 MHz DDR2 SDRAM Memory Interface.

The appearance of the DIMM memory in the figure may not reflect the actual memory, depending on the system model.

1. Before proceeding, make sure that the system is turned off, that you are wearing an anti-static wrist strap (available in most computer shops), and that your workspace is dust and smoke-free.

2. **Removing the system cover**

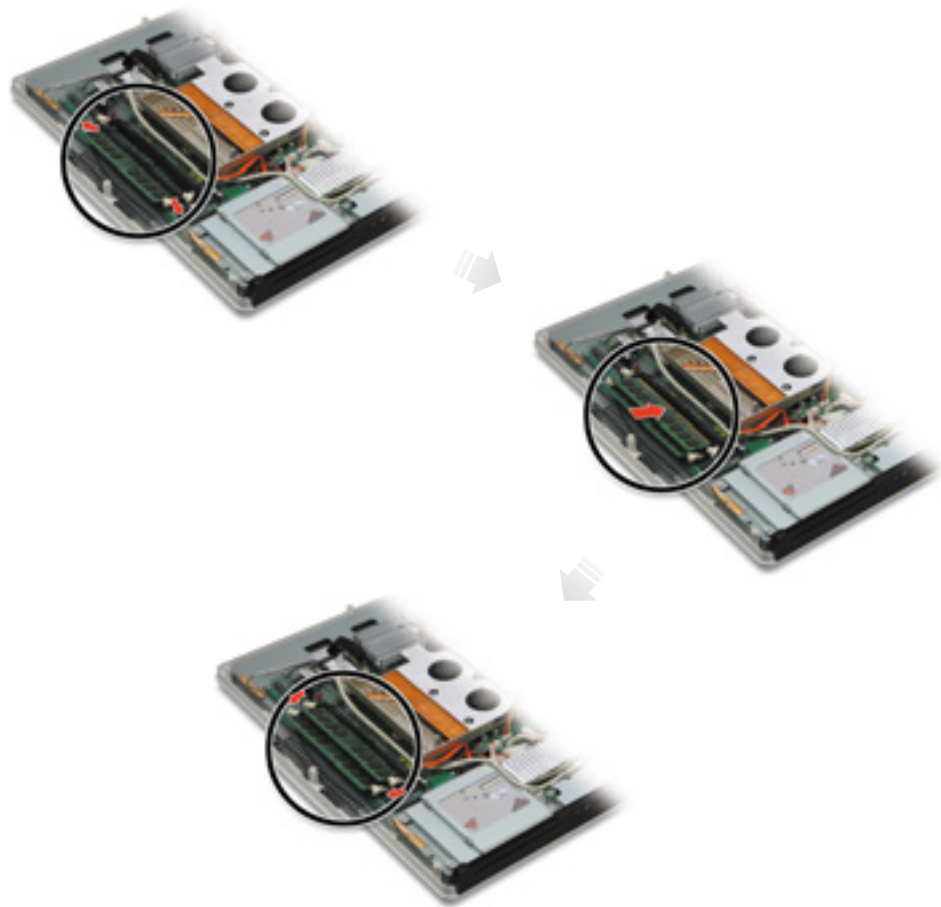
Place the system on an open flat surface and remove the screws and back cover as shown in the figure.



3. Mounting the main memory

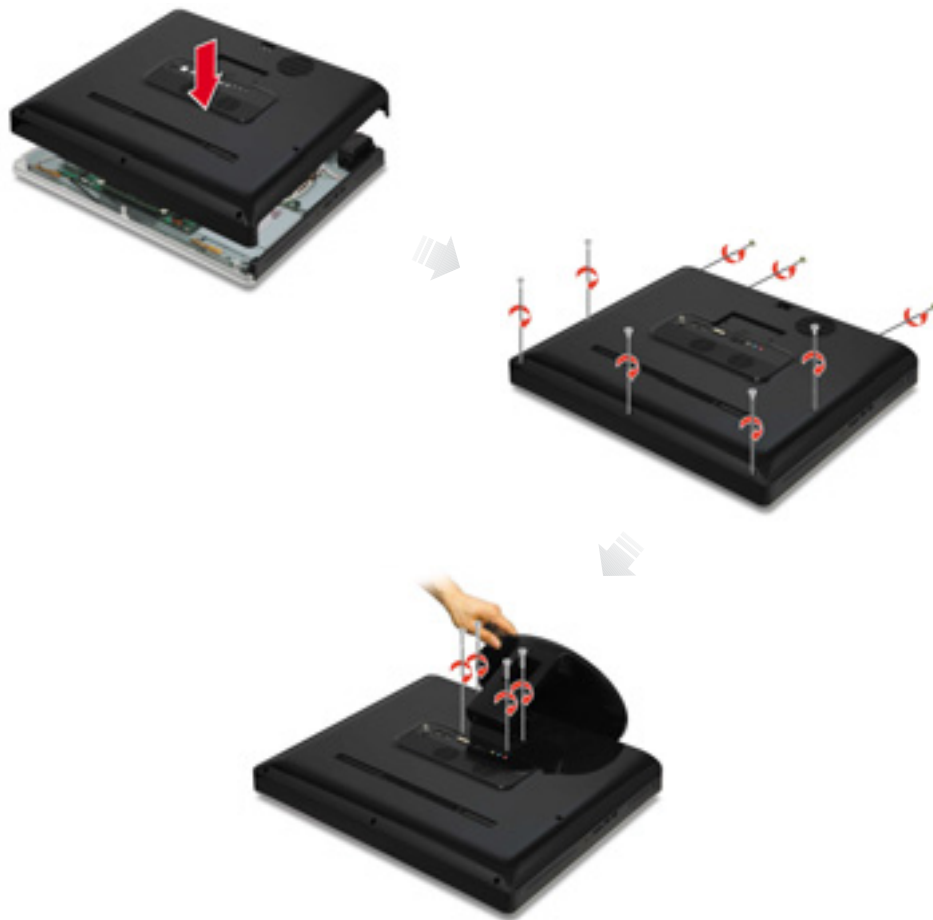
If you want to continue to use your existing memory, you will not need to remove it.

- 1) Make sure that the ejector clips on both sides of the socket are in the open position.
- 2) Align the notches of the DIMM memory with the slot keys of the socket, this allows the memory to be inserted. Gently push the memory into the slot until both ejector clips rise to the lock position.



4. Replacing the system cover

Connect the close the back cover and attach the screws. Make sure that the LCD panel does not get damaged.



5. Checking memory capacity

Once memory installation is complete, restart the system. If an error message related to the memory capacity appears upon booting, press the Del key to enter the system setup screen. Save the setting and exit.