



FCC ID: C8VPT1400

---

## ATTACHMENT E.

- User Manual -

---

**HCT CO., LTD.**

SAN 136-1, AMI-RI, BUBAL-EUP, ICHEON-SI, KYOUNGKI-DO, 467-701, KOREA  
TEL:+82 31 639 8517 FAX:+82 31 639 8525 [www.hct.co.kr](http://www.hct.co.kr)

**Report No. : HCTR0909FR10**

**1/1**

**AVERATEC**  
*My Life, My Style*



**AVERATEC PT1400**  
*User's Guide*

# Regulatory Information

## FCC-B Radio Frequency Interference Statement

This equipment has been tested and found to comply with the limits for a Class B digital device, pursuant to part 15 of the FCC rules. These limits are designed to provide reasonable protection against harmful interference in a residential installation. This equipment generates, uses and can radiate radio frequency energy and, if not installed and used in accordance with the instructions, may cause harmful interference to radio communications. However, there is no guarantee that interference will not occur in a particular installation. If this equipment does cause harmful interference to radio or television reception, which can be determined by turning the equipment off and on, the user is encouraged to try to correct the interference by one or more of the following measures:

- ▶ Reorient or relocate the receiving antenna.
- ▶ Increase the separation between the equipment and receiver.
- ▶ Connect the equipment into an outlet on a circuit different from that to which the receiver is connected.

- Note**
- The changes or modifications not expressly approved by the party responsible for compliance could void the user's authority to operate the equipment.
  - Shield interface cables and AC power cord, if any must be used in order to comply with the emission limits.

### FCC Conditions

This device complies with part 15 of the FCC Rules. Operation is subject to the following two conditions:

1. This device may not cause harmful interference.
2. This device must accept any interference received, including interference that may cause undesired operation.

### FCC RF Radiation Exposure Statement

1. This transmitter must not be co-located or operating in conjunction with any other antenna or transmitter.
2. This equipment complies with FCC RF radiation exposure limits set forth for an uncontrolled environment. To maintain compliance with FCC RF exposure compliance requirements, avoid direct contact to the transmitting antenna during transmitting.
3. Any changes or modifications (including the antennas) made to this device that are not expressly approved by the manufacturer may void the user's authority to operate the equipment.

### RF Exposure Warning

This equipment complies with FCC RF exposure limits set forth for an uncontrolled environment. This equipment must not be co-located or operating in conjunction with any other antenna or transmitter.

SAR Value: 0.023 W/kg



For better environmental protection, waste batteries should be collected separately for recycling or special disposal.

## Battery Notice

**CAUTION** RISK OF EXPLOSION IF BATTERY IS REPLACED BY AN INCORRECT TYPE. DISPOSE OF USED BATTERIES ACCORDING TO THE INSTRUCTIONS.

## Ethernet Notice

This equipment is intended for indoor use only and all the wiring is designed for indoor use.

## Safety Instructions

- 1.** Read the safety instructions carefully and thoroughly.
- 2.** Save this User Guide for later use.
- 3.** Keep this equipment away from humidity and high temperature.
- 4.** Lay this equipment on a stable surface before setting it up.
- 5.** The openings on the enclosure are used for air convection and to prevent the equipment from overheating. Do not cover the openings.
- 6.** Make sure that the power voltage is within its safety range and has been adjusted properly to the value of 100~240V before connecting the equipment to the power inlet.
- 7.** Place the power cord in a way that people are unlikely to step on it. Do not place anything on the power cord.
- 8.** Always unplug the power cord before inserting any add-on card or module.
- 9.** All cautions and warnings on the equipment should be noted.
- 10.** If any of the following situations arises, get the equipment checked by a service personnel:
  - ▶ The power cord or plug is damaged.
  - ▶ Liquid has penetrated into the equipment.
  - ▶ The equipment has been exposed to moisture.

- ▶ The equipment has not worked well or you can not get it work according to the Users Manual.
  - ▶ The equipment was dropped or damaged.
  - ▶ The equipment has obvious signs of breakage.
- 11.** Never pour any liquid into the computer as this will damage the equipment or cause an electrical shock.
  - 12.** Do not leave the equipment in an unconditioned environment with a storage temperature of 60°C (140°F) or above, as this may damage the equipment.
  - 13.** To prevent explosion caused by improper battery replacement, use the same or equivalent type of battery recommended by the manufacturer only.

## WEEE Statement

<p>(English) Under the European Union ("EU") Directive on Waste Electrical and Electronic Equipment, Directive 2002/96/EC, which takes effect on August 13, 2005, products of "electrical and electronic equipment" cannot be discarded as municipal waste anymore and manufacturers of covered electronic equipment will be obligated to take back such products at the end of their useful life.</p>
<p>(Deutsch) Gemäß der Richtlinie 2002/96/EG über Elektro- und Elektronik-Altgeräte dürfen Elektro- und Elektronik-Altgeräte nicht mehr als kommunale Abfälle entsorgt werden, die sich auf 13. August, 2005 wirken. Und der Hersteller von bedeckt Elektronik-Altgeräte gesetzlich zur gebrachten Produkte am Ende seines Baruchbarkeitsdauer zurückzunehmen.</p>
<p>(Français) Au sujet de la directive européenne (EU) relative aux déchets des équipement électriques et électroniques, directive 2002/96/EC, prenant effet le 13 août 2005, que les produits électriques et électroniques ne peuvent être déposés dans les décharges ou tout simplement mis à la poubelle. Les fabricants de ces équipements seront obligés de récupérer certains produits en fin de vie.</p>
<p>(Русский) В соответствии с директивой Европейского Союза (ЕС) по предотвращению загрязнения окружающей среды использованным электрическим и электронным оборудованием (директива WEEE 2002/96/EC), вступающей в силу 13 августа 2005 года, изделия, относящиеся к электрическому и электронному оборудованию, не могут рассматриваться как бытовой мусор, поэтому производители вышеперечисленного электронного оборудования обязаны принимать его для переработки по окончании срока службы.</p>
<p>(Español) Bajo la directiva 2002/96/EC de la Unión Europea en materia de desechos y/o equipos electrónicos, con fecha de rigor desde el 13 de agosto de 2005, los productos clasificados como "eléctricos y equipos electrónicos" no pueden ser depositados en los contenedores habituales de su municipio, los fabricantes de equipos electrónicos, están obligados a hacerse cargo de dichos productos al término de su período de vida.</p>
<p>(Italiano) In base alla Direttiva dell'Unione Europea (EU) sullo Smaltimento dei Materiali Elettrici ed Elettronici, Direttiva 2002/96/EC in vigore dal 13 Agosto 2005, prodotti appartenenti alla categoria dei Materiali Elettrici ed Elettronici non possono più essere eliminati come rifiuti municipali: i produttori di detti materiali saranno obbligati a ritirare ogni prodotto alla fine del suo ciclo di vita..</p>

<p>(Nederlands) De richtlijn van de Europese Unie (EU) met betrekking tot Vervuiling van Elektrische en Electronische producten (2002/96/EC), die op 13 Augustus 2005 in zal gaan kunnen niet meer beschouwd worden als vervuiling. Fabrikanten van dit soort producten worden verplicht om producten retour te nemen aan het eind van hun levenscyclus..</p>
<p>(Srpski) Po Direktivi Evropske unije ("EU") o odbačenoj eelektronskoj i električnoj opremi, Direktiva 2002/96/EC, koja stupa na snagu od 13. Avgusta 2005, proizvodi koji spadaju pod "elektronsku i električnu opremu" ne mogu više biti odbačeni kao običan otpad i proizvođači ove opreme biće prinuđeni da uzmu natrag ove proizvode na kraju njihovog uobičajenog veka trajanja.</p>
<p>(Polski) Zgodnie z Dyrektywą Unii Europejskiej ("UE") dotyczącą odpadów produktów elektrycznych i elektronicznych (Dyrektywa 2002/96/EC), która wchodzi w życie 13 sierpnia 2005, tzw. "produkty oraz wyposażenie elektryczne i elektroniczne" nie mogą być traktowane jako śmieci komunalne, tak więc producenci tych produktów będą zobowiązani do odbierania ich w momencie gdy produkt jest wycofywany z użycia.</p>
<p>(TÜRKÇE) Avrupa Birliği (AB) Kararnamesi Elektrik ve Elektronik Malzeme Atığı, 2002/96/EC Kararnamesi altında 13 Ağustos 2005 tarihinden itibaren geçerli olmak üzere, elektrikli ve elektronik malzemeler diğer atıklar gibi çöpe atılmayacak ve bu elektronik cihazların üreticileri, cihazların kullanım süreleri bittikten sonra ürünleri geri toplamakla yükümlü olacaktır.</p>
<p>(ČESKY) Podle směrnice Evropské unie ("EU") o likvidaci elektrických a elektronických výrobků 2002/96/EC platné od 13. srpna 2005 je zakázáno likvidovat "elektrické a elektronické výrobky" v běžném komunálním odpadu a výrobci elektronických výrobků, na které se tato směrnice vztahuje, budou povinni odebrat takové výrobky zpět po skončení jejich životnosti.</p>
<p>(MAGYAR) Az Európai Unió („EU”) 2005. augusztus 13-án hatályba lépő, az elektromos és elektronikus berendezések hulladékairól szóló 2002/96/EK irányelve szerint az elektromos és elektronikus berendezések többé nem kezelhetőek lakossági hulladékként, és az ilyen elektronikus berendezések gyártói kötelesek válnak az ilyen termékek visszavételére azok hasznos élettartama végén.</p>
<p>(English) As of this writing, the e-waste legislation is undergoing review in the United States Congress. "WEEE" legislation for the United States will be limited to the individual States.</p>



## Before You Read

The information in this user's guide is subject to change without notice.

TriGem Computer, Inc. shall not be liable for technical or editorial errors or omissions contained herein; nor for incidental or consequential damages resulting from the furnishing, performance, or use of this material.

AVERATEC is a trademark or registered trademark of TriGem Computer, Inc. in the United States and/or other countries. All other product and brand names are trademarks of their respective owners.

© 2009 TriGem Computer, Inc. All rights reserved.

**Note** Depending on the model, your computer's components may vary and look slightly different than those pictured.

## Release History

Version	Revision Note	Date
1.0	First Release	08, 2009

# Table of Contents

**Before You Start**

- Regulatory Information i
- Optical Device Drive Notice iii
- Battery Notice iii
- Ethernet Notice iii
- Macrovision Notice iii
- Safety Instructions iv
- WEEE Statement vi
- Before You Read vii
- Release History vi

**Chapter 1 About Your System**

- Unpacking 1-1
- What is the Averatec PT1400 1-2
- Overview 1-4

**Chapter 2 Setting Up Your System**

- Installing the System 2-1
- Connecting the Optional Devices 2-2
- Installing the Battery 2-3
- Connecting the Power Cord 2-4
- Turning On Your System 2-5

Setting Up Windows XP for the First Time	2-6
Turning Off Your System	2-9

### Chapter 3 Using Your System

Using the Stylus Pen	3-1
Secondary LCD Pivot Calibration	3-5
Using the DVsn Button	3-10
Special Function Buttons	3-11
Using the DVsn, PT, and BEAM Control Program	3-13
Connecting to the Internet	3-17
Using the Battery	3-20
Using Windows XP	3-22
Using the HOLD Switch	3-26

### Chapter 4 Using the Multimedia Features

Adjusting the Speaker Volume	4-1
Using the Webcam	4-3

### Chapter 5 System SETUP (BIOS)

Entering Setup	5-1
System Setup Options	5-2

## Appendix A Specifications

Product Specifications	A-1
------------------------	-----

Chapter

1

# About Your System

## Unpacking

First, unpack the system from the shipping carton and check all items carefully. If any item is damaged or missed, please contact your local dealer immediately. Keep the box and packing materials in case you need to ship the unit in for service in the future.

The package should contain the following items:

- ▶ Averatec PT1400 system
- ▶ Quick Start Guide
- ▶ 20V AC Adapter
- ▶ AC Cord
- ▶ Battery
- ▶ Primary LCD Cover

## What is the Averatec PT1400

Congratulations on your purchase of the system. Your system features the latest advances in portable computing technology. The system's modular design provides maximum expandability without compromising portability.

### Dual LCD Monitor

- Easy to operate dual Touch LCD Monitors with simultaneous (two-way) viewing via the pivot function.
- Offers all the functions of both a PDA and Pocket PC without the limitations.
- Maintains all the similar functions of your typical Windows-based PC.

### Presentation Support Function

- Full-screen presentation with simple one-button operation.

### Multimedia Function

- Built-in fully functional camera allows for operation of all built-in applications as well as imaging and audio recording.
- Convenient camera programs with touch button.
- Dual speaker with high fidelity sound.

### **Support of Wireless Communication and High-speed Data-transportation**

- Increased mobility with the wireless LAN
- High-speed data transport support with external devices, via the built-in USB 2.0 ports

### **Convenient Mobility / Splendid Design**

- Employed external icon-touch button for simple design and convenient operation.
- 14-inch notebook size with high mobility.

## Overview

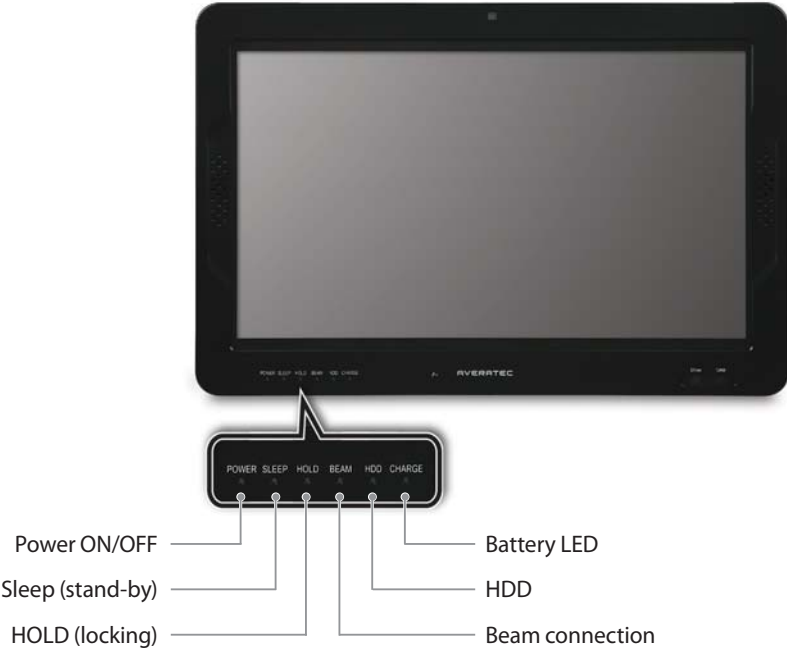
- Note**
- External appearance and color of the computer may be different from the picture.
  - Shape and size of the icon on the product may differ.

### Front View



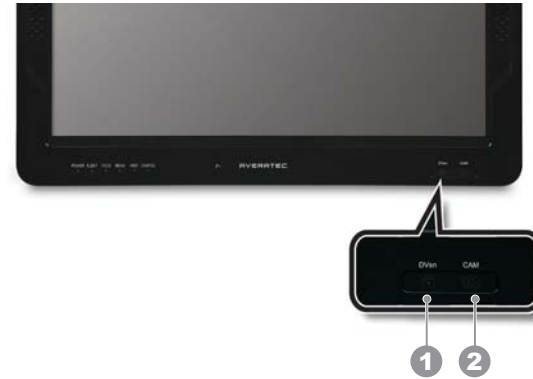


LED indicators



## Touch sensor buttons

1. DVsn(LCD screen change)  
This function is used to change the LCD screen into dual mode, extended mode, or switching mode.
2. CAM(camera)  
Operates the camera to record and replay video.



### CAUTION

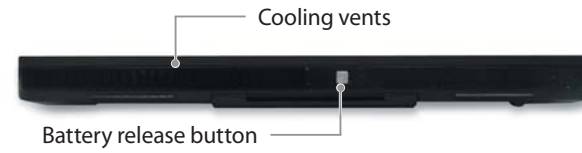
- Touch sensor button only works when the computer is ON.
- Use the touch sensor button with clean and dry hands. Remove any moisture from your hands or surface of the button in humid environments.
- Touch sensor button normally works with slight touch. Do not press on it to forcefully. Touch sensor button may be damaged by a strong shock.
- Do not use pointed items such as a knife or ball point pen. Pointed things may damage the touch sensor button.
- When you press the touch sensor button, be careful not to touch other functions. Accurately press the required function of touch sensor button with your fingertip.
- Touch sensor button may not operate normally when you wear gloves or when the product is covered by vinyl or other types of screen protectors.
- Due to the sensitivity of the touch panel, it is recommended to avoid any contact with any conductive materials.

### Back Side

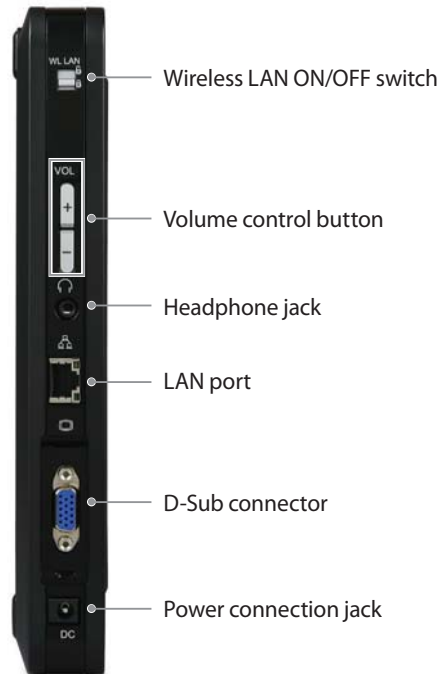
1. Secondary LCD
2. Stand



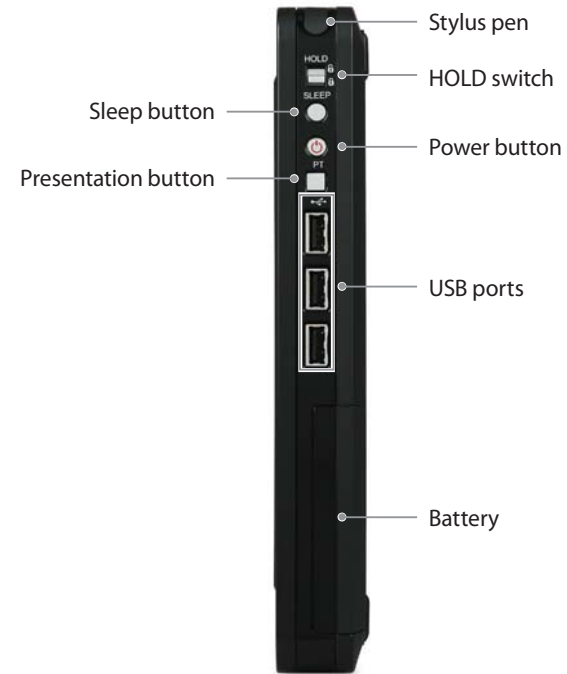
### Top and Bottom Side



## Left Side



## Right Side



Chapter

2

# Setting Up Your System

## Installing the System

### Unfolding the Stand



Pull down the stand support plate to the locking position.

### Rotating the Secondary LCD



Turn the secondary LCD clockwise.  
Do not turn it counter-clockwise.

### Removing the LCD Cover



## Connecting the Optional Devices

### 1. Connect to the Internet



**Note** You can also connect to the Internet using the wireless LAN.

### 2. Connect the audio peripherals



### 3. Connect the keyboard and mouse (USB)(Not included)



### 4. Connect the display device (optional)



## Installing the Battery

To install the battery, insert it into the battery slot. The installed battery pack charges automatically any time the computer is connected to the AC adapter.



**WARNING** Only use batteries that are approved by an authorized dealer. All batteries are not the same and therefore should not be treated as such. Using the wrong battery could cause serious damage to your computer and yourself through toxic emissions.

**CAUTION** To avoid the danger of explosion, do not incorrectly replace the battery. Replace only with same or equivalent type recommended by the manufacturer. Discard used batteries according to the manufacturer's instructions or local laws.



## Connecting the Power Cord

Plug the power cord into the AC power receptacle on the back panel and then plug the other end of the power cord into an appropriately grounded electrical outlet.



**Warning** To avoid receiving an electric shock, be sure to plug the cord into the system before plugging it into the wall socket.

**CAUTION** To protect your computer and other devices during a lightning storm, or when it is left unattended and unused for long periods of time, unplug the computer and other devices from the wall outlet and disconnect the antenna or cable system. This will help to prevent damage to the computer and other devices due to lightning and power line surges.

# Turning On Your System

To turn on your system, press the power button.



## Setting Up Windows XP for the First Time

If you are about to use the system for the first time, you must go through the Windows XP user registration process after starting up. For details on the user registration procedure, please refer to the following. (Some details may vary depending on the system model. However, this will not affect your ability to use your system.)

1. After you press the power button, the start screen for Microsoft Windows will appear. To start Windows XP, please click **Next**.
2. After reading "**The End User License Agreement**" that is displayed on the screen, select "**Yes, I accept**" and then click **Next**.



3. After selecting "Help protect my PC by turning on Automatic Updates now," you should click **Next**.



4. Now you must specify the name and description of your computer, and then click **Next**. If you don't want to specify these at this time, simply click **Skip**.



5. After selecting the appropriate method for internet connection, click **Next**. If you want to establish a connection later, then click **Skip**. (The dialogue box that asks, "How do you want to connect to the internet?" may not appear, depending on your model type.)



6. A dialogue box will appear, asking you "Ready to register with Microsoft?" Select "No, not at this time." and then click **Next**.



7. When a dialogue box saying "Thank you!" appears, click **Finish**.



8. The Windows XP start will appear.



## Turning Off Your System

To turn off your system, follow the below:

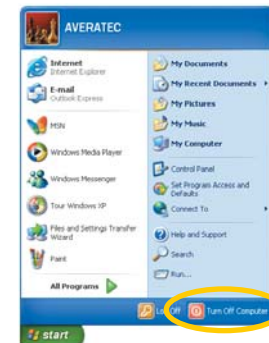
### Case 1 Click the Shut Down button

Click **Start** > **Shut Down**. The computer will shut down automatically.

### Case 2 Press the power button on the right side of the system

Press the power button once and let go. The PC will automatically attempt to close any running applications and shut down.

**Note** If the system is operating abnormally, you can reboot the system by pressing and holding down the power button until the system turns off. Press the power button again, once, to restart the system.



**Case 3** **Power saving mode**

You can enter into the power saving mode by pressing the SLEEP button on the right side of your system or by setting the Windows XP.

This mode saves your session and puts the computer in a lower-power state so that you can quickly resume working.



Chapter

3

# Using Your System



## Using the Stylus Pen

You can use the touchscreen with your fingers or the stylus pen.





### Pull out the Stylus Pen

1. Pull out the stylus pen from the slot located on the upper right side of your system.
2. After using the stylus pen, replace it in the slot again.



- Note**
- With the stylus pen you can directly press onto the LCD screen instead of using a mouse.
  - Only operate the product with the stylus pen or fingers. The LCD may be damaged if a pointed or sharp object is used.
  - For long term use, it is recommended to connect a mouse.

## Functions of Stylus Pen

Mouse	Stylus Pen Operation	Function
Click	One touch	 Press an item once with the pen to choose it.
Double click	Two touches	 Press an item twice with the pen to choose it.
Right click	Keep pressing	 Press and hold the touchscreen with the pen about 3 seconds, then a pop-up menu will appear.
Drag	Drawing	 Put the pen on an item and drag it to where you want.

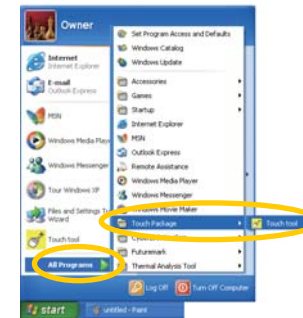
## Touchscreen Calibration

You should calibrate the touchscreen:

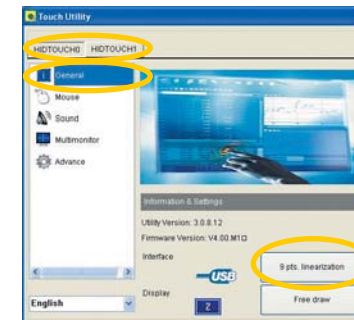
- When you use the system for the first time
- When you can't control the pen pointer
- When the pen is not accurate

To calibrate the touchscreen, follow these steps:

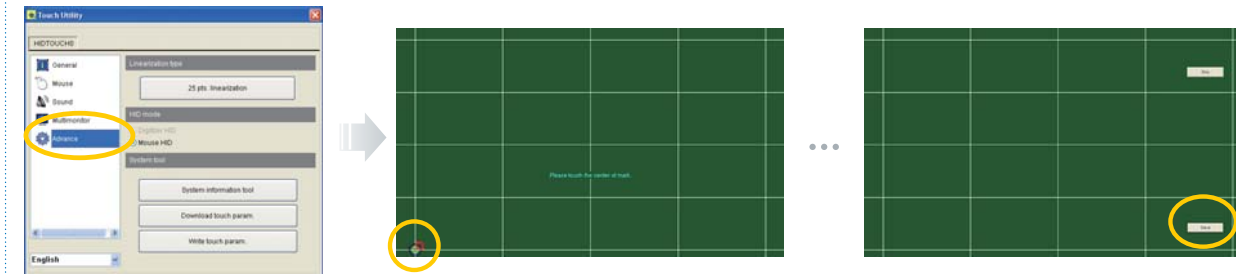
1. Press **Start > All Programs > Touch Package > Touch tool.**



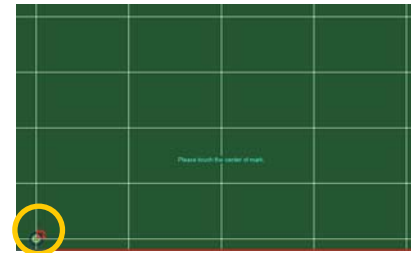
2. Select the LCD tab that you want to calibrate and press the **9 pts. Linearization** button in the **General** menu. (The **HIDTOUCH0** tab is for the secondary LCD and **HIDTOUCH1** is for the primary LCD.)



**Note** For more accurate calibration, you can change the points from 9 to 25. To change the points, choose the **Advance** tab and press the **25 pts. linearization** button.



**3.** To calibrate the touchscreen, follow the message on the screen.

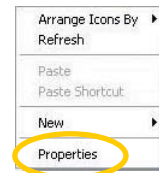


**4.** When you finish the calibration, press the **Save** button to save the setting value.

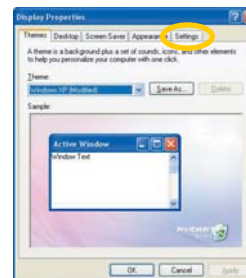
## Secondary LCD Pivot Calibration

The secondary LCD supports the screen pivot and touch pivot. You can calibrate the touch pivot when it is not working. To calibrate, follow these steps:

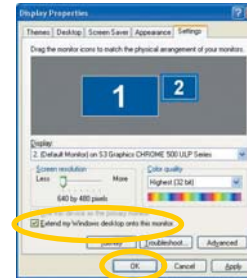
1. Press and hold the empty desktop with the stylus pen about 3 seconds.
2. The pop-up menu will appear.
3. Choose the **Properties** menu.



4. When the **Display Properties** window appears, select the **Settings** tab.

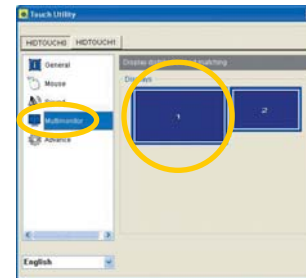


5. Click the secondary LCD icon, check the "Extend my Windows desktop onto this monitor." option, and click **OK**.



6. Click **Start > All Programs > Touch Package > Touch tool**.

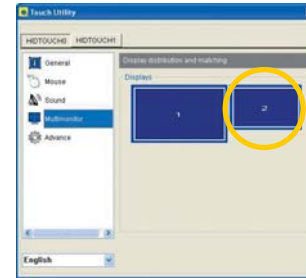
7. Select the **Multimonitor** menu and the primary LCD icon on the **Displays** area.



8. Press the primary LCD to align.



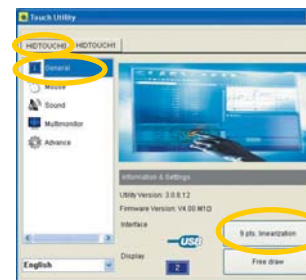
9. Select the secondary LCD icon on the **Displays** area.



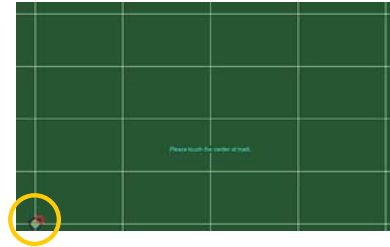
10. Press the secondary LCD to align.



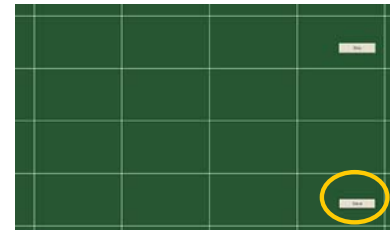
11. Select the **HIDTOUCH0** tab, the **General** menu, and **9 pts. linearization**.



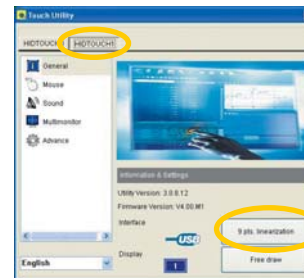
12. To calibrate the secondary LCD, follow the messages on the screen.



13. If you finish the calibration, select the **Save** button.

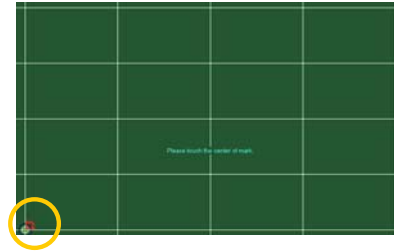


14. Select the **HIDTOUCH1** tab and **9 pts. linearization**.

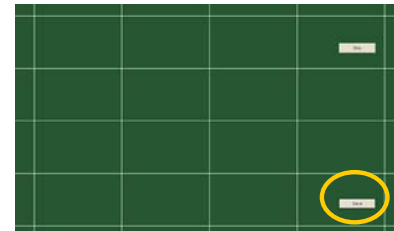




**15.** To calibrate the primary LCD, follow the messages on the screen.



**16.** If you finish the calibration, select the **Save** button.



**17.** To reboot your system, click **Start > Turn Off Computer**, and select the **Turn Off** button.

## Using the DVsn Button

You can change the display mode by pressing the **DVsn** button



There are 3 display modes available: **Clone mode**, **Extended mode**, and **Switching mode**.



Clone mode (default)



Extended mode



Switching mode

**Note** When you press the **DVsn** button, the **DVsn Control** window automatically appears on the screen. For more information, refer to "Using the DVsn and PT Control Program."

## Special Function Buttons

There are two special buttons (SLEEP and PT) on the right side of your system.

### SLEEP Button

To enter into the power saving (stand-by) mode, follow these steps:

1. Press the **SLEEP** button on the right side of the front panel.



2. Your system enters into the power saving mode and the **SLEEP** led is light on.

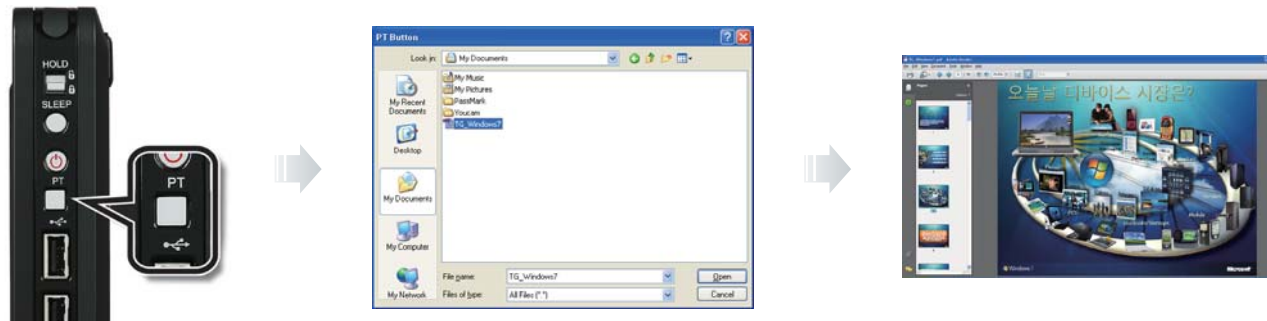
3. Press the **Power** or **PT** button to resume from the power saving mode.



## PT Button

You can see the presentation file through the secondary LCD or the connected external display device by pressing the PT button.

1. To prepare the presentation, reserve the file that you want to present. To reserve the file, refer to "Using the DVsn, PT, and BEAM Control Program."
2. Set the secondary LCD for presentation (extended mode or switching mode) or connect the external display device to the D-sub connector, turn on the connected device, and set the **BEAM Control** option to **14"+3rd**.
3. Press the **PT** button on the system.
4. You can see the reserved presentation file through the secondary LCD or the connected external display device.



**Note** When you connect the external display device and set the **BEAM Control** option to **14"+3rd**, the **BEAM** led light will be on. If you connect an external display device, the secondary LCD will not be displayed.

## Using the DVsn, PT, and BEAM Control Program

You can control the functions of the DVsn and PT buttons and the display by using the control program.

### DVsn Control

To control the DVsn function, follow these steps:

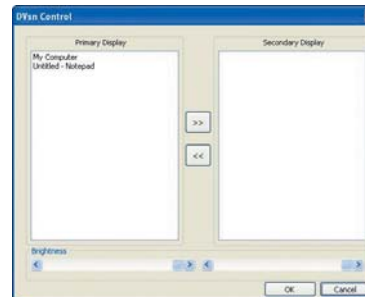
1. Click the **AVERATEC Utility** icon on the taskbar.



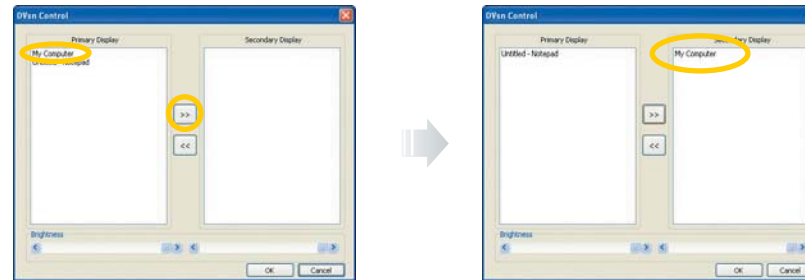
2. Click **DVsn**.



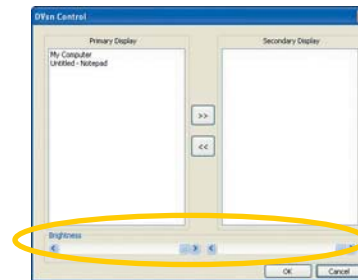
3. The **DVsn Control** window appears.



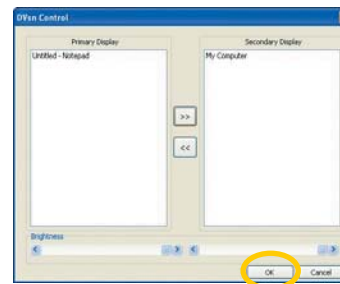
4. You can choose the primary or secondary LCD for displaying the opened window.



5. You can also control the brightness of the primary and secondary LCDs by sliding the control bars.



6. After finishing the control, click **OK**.



## PT Control

To control the PT function, follow these steps:

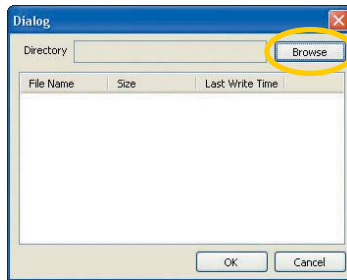
1. Click the **AVERATEC Utility** icon on the taskbar.



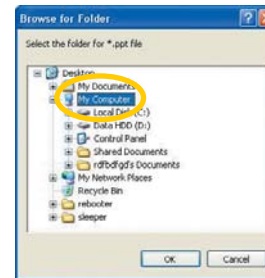
2. Click **PT**.



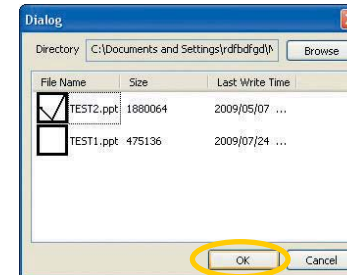
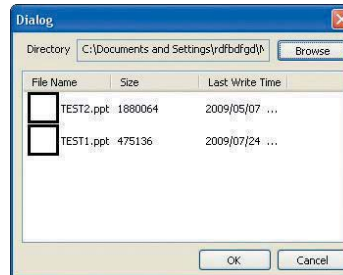
3. When the Dialog window appears, click the **Browse** button.



4. When the **Browse for Folder** window appears, select the folder that you want.



5. Choose the file for presentation and click **OK**.



## BEAM Control

To control the external display device, follow these steps:

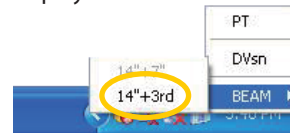
1. Connect an external display device to your system and turn it on.
2. Click the **AVERATEC Utility** icon on the taskbar.



3. Click **BEAM**.



4. Select the **14"+3rd** menu for the external display device.



5. The **BEAM** led light will be on and you can see the screen through the connected external display device.





## Connecting to the Internet

You can use the Internet by connecting to a wired or wireless network that is available to you.

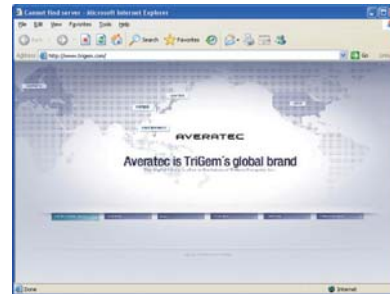
### Using the Wired LAN

To use the wired LAN, follow these steps:

1. Connect a LAN cable to the LAN connector as shown in the figure.



2. Configure the communication settings for the system based on your communication environment. When connecting to the Internet via an Internet service provider, contact the service provider for more information on required communication settings.
3. Launch Internet Explorer or other communication software.



## Using the Wireless LAN

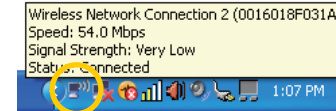
To use a wireless network in an office environment where APs (Access Points) are installed, see the following instructions. (The example used here explains how to use the basic Windows configuration features to configure the system. You can also use the program that comes with the wireless LAN card to configure the network.)

1. Select the **WL LAN** switch to ON position to turn on the wireless LAN function. When wireless LAN is enabled, the Wireless LAN LED lights.

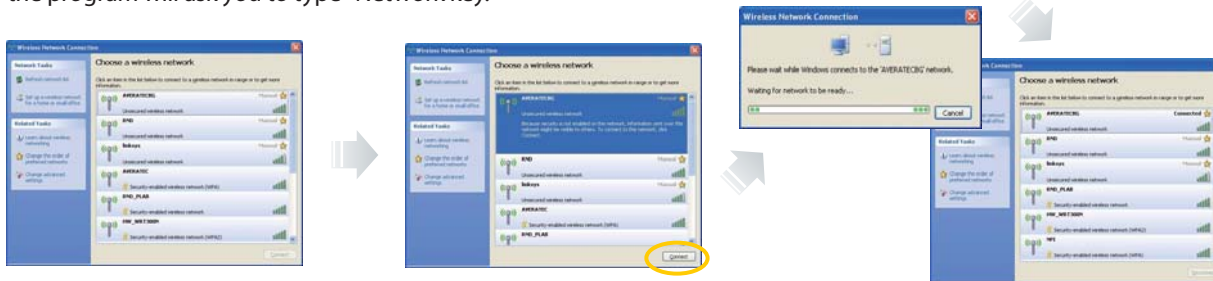


**Note** The connection message will appear on task bar when the possible wireless LAN connection is detected.

2. Click the wireless network connection icon and the program of **Wireless Network Connection** will be launched.



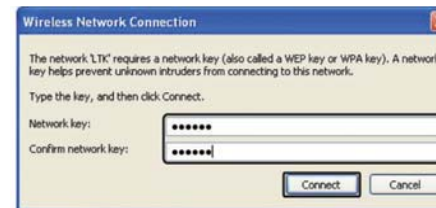
3. Select a wireless network from the list that appears, and then click **Connect** button. If the network you is security enabled, the program will ask you to type "Network key."



- Note**
- Click **Refresh network list**, if there is no wireless network in the list.
  - If your network is one that supports "Wireless Provisioning Services," you might be asked to download additional files that will allow your notebook to connect to the network.
  - If you connect to a unsecured wireless network, the warning message will appear. Click **Connect** to connect or click **Cancel** to quit the dialog box. After setting up the security, connect the wireless LAN again.

4. Type **Network key** and **Confirm network key**, click **Connect** to connect the wireless LAN.

- Note**
- If the network key is automatically provided by the network, the connection will be made automatically, and the program will not request you type the network key.



## Using the Battery

### Installing the Battery

Insert the battery into the battery slot.

### Removing the Battery

1. Turn off the system.
2. Push and hold the battery release button and remove the battery.

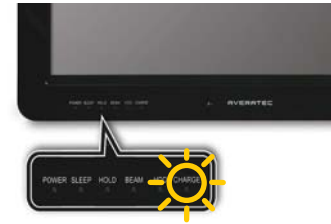


## Charging the Battery

The battery pack is automatically charged when you connect the AC adapter to the system. You can check the battery status by the color of the CHARGE LED indicator.

### CHARGE LED indicator

LED color	Status	Description
Orange	On	Charging battery
	Blinking	Battery charge is low
White	On	Battery is fully charged
Off	-	Battery is fully charged in the battery mode
		No charging in the battery mode

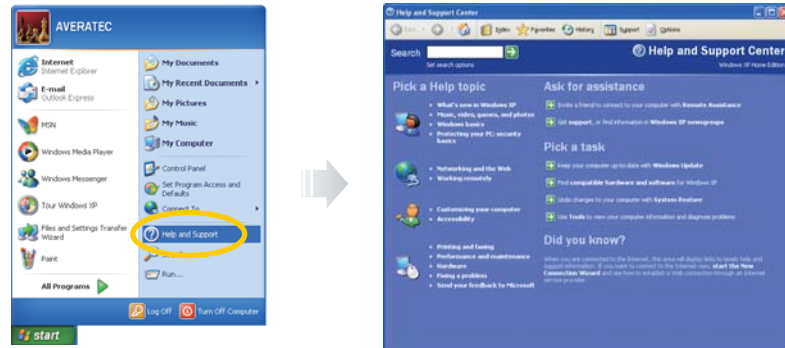


**CAUTION** When the battery is low, you may not be able to boot your system with only the battery power. Try charging the battery or connecting the AC adapter before attempting to turn on your system. If you see the low battery warning message or hear the alarm sound, immediately save your working data or connect the AC adapter before the system shuts down and the data is lost.

# Using the Windows

## Help Windows

For Windows XP help, click **Start ► Help and Support**.



## Desktop

Desktop may vary differently on the software installed in your system with different or additional shortcuts.



### Recycle Bin

Used for storing deleted files in case you want to recover and save it in your system. The files will only be deleted from the Recycle Bin permanently only if you empty it by right clicking your mouse and selecting "Empty Recycle Bin."

### Start Button

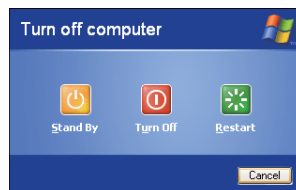
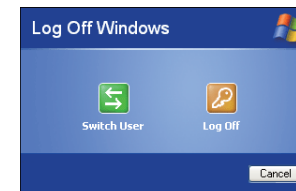
Allows easy access to all Windows programs.

The Start menu allows you to adapt and show the programs used most frequently.



**Log Off** will enable the current user to log off and allows a new user to log on.

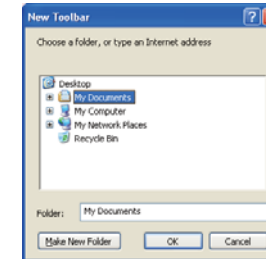
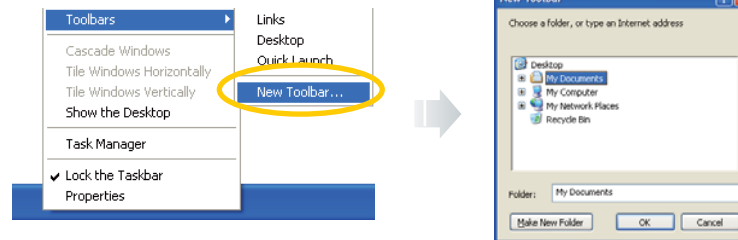
**Turn Off Computer** allows you to **Turn off, Restart**, or enter **Stand By** mode for power saving purposes.



## Taskbar

When you open a program, its icon is displayed at the taskbar for you to conveniently move between programs by clicking the relevant button.

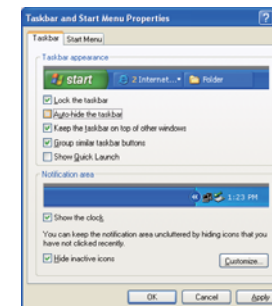
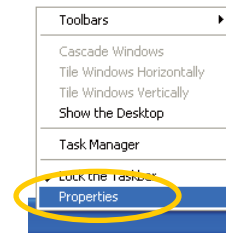
To add or remove toolbars from the taskbar: right click an empty spot on the taskbar, select **Toolbars** ► **New Toolbar**.



## Notification

The icons that appear here are for quick access to some programs and computer functions that you frequently used. To prevent Windows XP from hiding icons:

From an empty spot on the **Taskbar**, right click your mouse and select the **Properties**, remove the checked mark on the **Auto-hide the taskbar**.

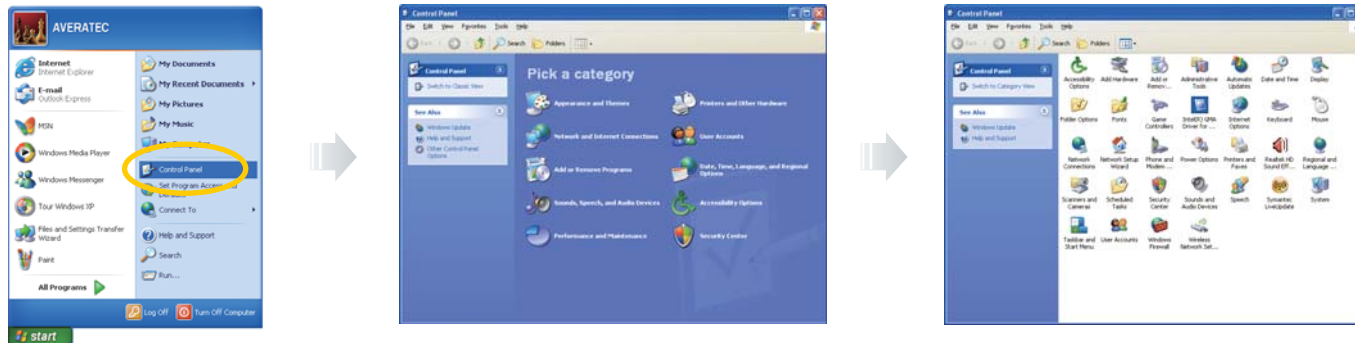




## Control Panel

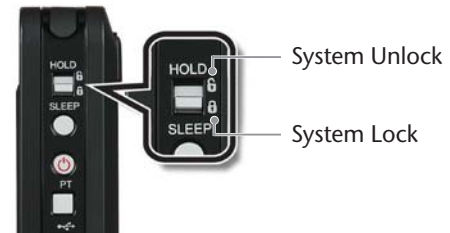
It is in this area that you can change how Windows looks and works. Click **Start ▶ Control Panel**.

There are two interfaces - **Classic View** and **Category View**.



## Using the HOLD Switch

You can lock all functions of your system by using the HOLD switch. Move the HOLD switch to the locked position to lock all functions of your system. To unlock the system, switch to the unlocked position again.



In the lock mode, the following functions will not work:

- Primary and secondary LCD touch panels
- Sleep button
- Power button
- PT button

Chapter

4

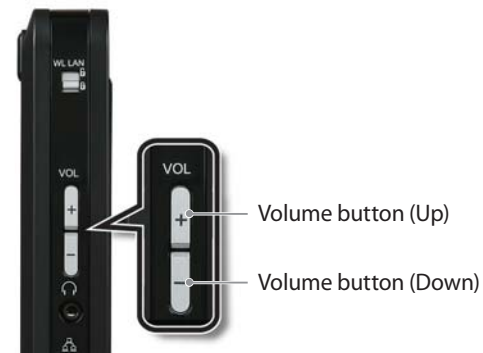
# Using the Multimedia Features

## Adjusting the Speaker Volume

Your system has built-in speakers on the left and right sides of the LCD panel. You can adjust the volume by pressing the volume adjustment buttons located on the left side of the LCD panel and / or by using the volume control feature in Windows XP.

### Volume Buttons

To adjust the volume level, use the volume up and down buttons on the left side of your system.

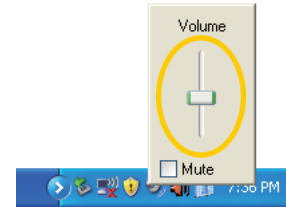


### Volume Control Program

You may also change the volume by using the vertical slider which appears after clicking the volume icon on the work presentation bar.



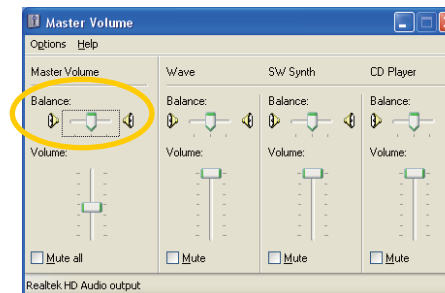
1. Increase the sound by moving the slider up.
2. Decrease the sound by moving the slider down.



3. Silence the system by clicking **Mute**.



4. Click the volume icon twice to see master volume window.




5. Here, you may separately modify the items you want.

## Using the Webcam

Using the built-in webcam, you can take photos and chat with your friends.


### Take photos

To take photos, follow the next steps:

1. Double click the CyberLink YouCam icon(  ) on the desktop, or press the CAM button that is located on lower-front side of the system.
2. The **CyberLink YouCam** will run and a green light on the webcam LED indicates your PC is ready to take photos.



3. Click the **Snapshot** button(  Snapshot ) on the **CyberLink YouCam** screen.

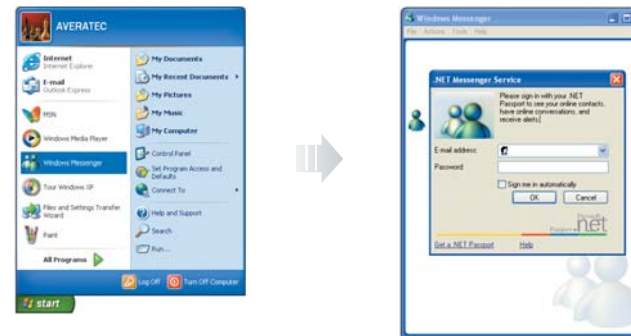
**Note** For more information, please refer to the Help Section of the program. You can access Help by clicking the help button(  ) on the upper right side of the screen.

## Video chatting

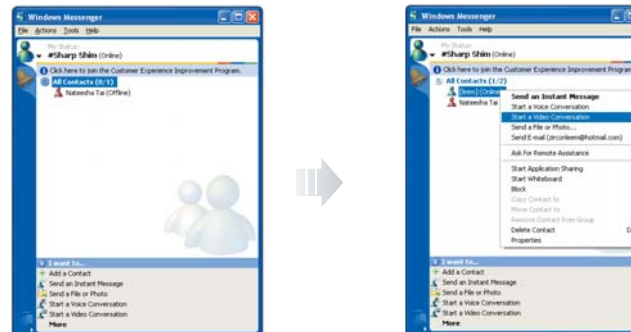
To chat with video, both your system and the system of the person you want to chat with must have a web camera or a CCD camera installed. You also need to download and install a messenger program. The screen that you will see varies depending on the type of the messenger program you're using.

1. Run the messenger program to register your email address. When the messenger is ready. Click **Start > Windows Messenger**. Select **Sign in**.

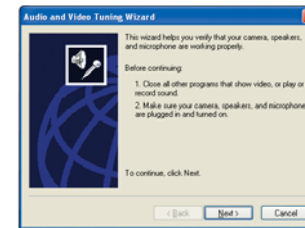
**Note** This is an example using Microsoft's MSN Messenger. Other messenger applications may vary.



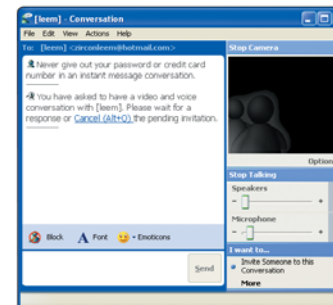
2. Right-click on your chat partner and then select **Start a Video Conversation**, as illustrated below.



**Note** If the web-camera setting is not configured, you will see the below screen. Run the wizard to setup the webcam by following the message on the screen.



3. Now you're ready to start video chatting.





Chapter

5

# System SETUP (BIOS)

For System Setup, change only the items that you need. Note that incorrect manipulation of Setup items could result in a system malfunction.

## Entering Setup

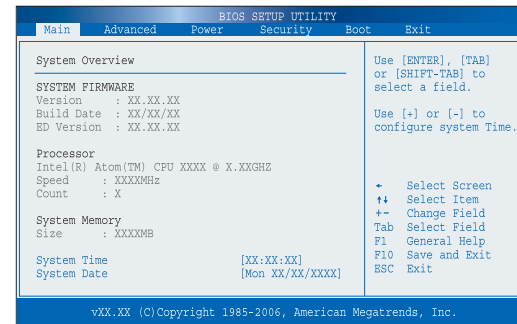
After powering on the system, press <Del> to enter the System Setup screen.

### BIOS Action Keys

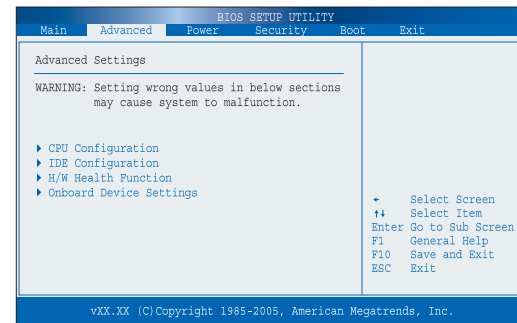
Function Key	Command	Description
ESC	Exit	Leaves a sub-menu to return to the previous menu OR exits the BIOS setup while saving changes.
Enter	Select	Shows the Sub Menu
F1	General Help	Shows the Help Screen
F9	Default Setting	Saves default setting
F10	Save and Exit	Saves changes and reboots the computer.
<Tab>	Select a field	Selects the next field.
↑ ↓ → ←	Select an item	Selects the next item.
, +	value	Selects the next value within a field.

# System Setup Options

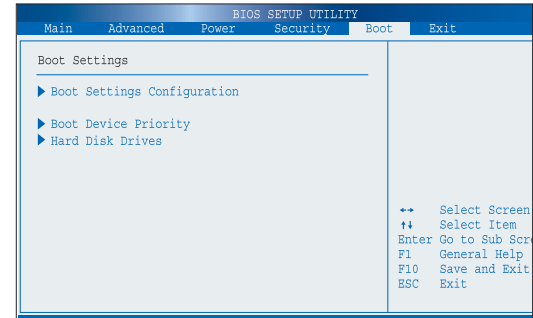
## Main Menu



## Advanced Menu



## Boot Menu

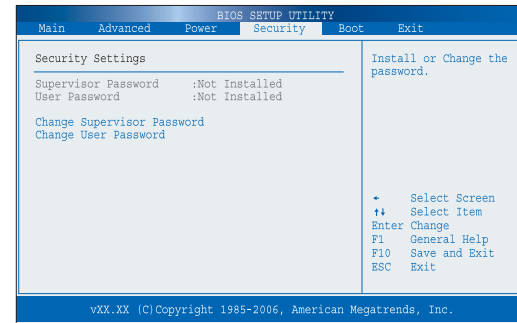


## Power Menu



## Security Menu

Sets up a password to prevent any unauthorized users from accessing the system.



### Supervisor Password

Shows the setup status of the Supervisor Password: Installed, if a Supervisor Password is set, or Not Installed.

### User Password

Shows the setup status of the User Password: Installed, if a User Password is set, or Not Installed.

### Change Supervisor Password

Setting up a password helps you prevent unauthorized users from accessing the system. The system does not come with a password enabled. A password can have up to six alphanumeric characters and/or numbers.

The Supervisor Password is at a higher level than the User Password.

### Set up Supervisor Password

1. On the initial System Setup screen, Go to **Change Supervisor Password**, and then press **Enter**.
2. On the following screen, enter the password and then press Enter.

Enter New Password	<input type="password"/>
--------------------	--------------------------

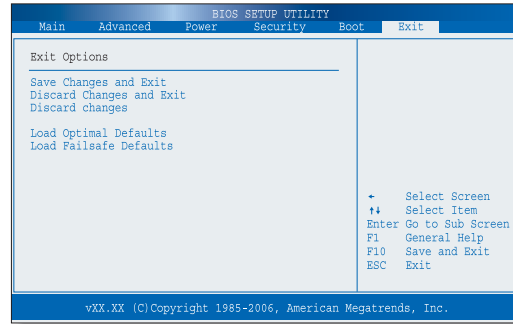
Then enter the same password again and press Enter.

Confirm New Password	<input type="password"/>
----------------------	--------------------------

3. If you entered the correct password, the following window will appear. Press **Enter**.  
This completes setting up a password.

Password installed
[OK]

## Exit Menu



### **Save Changes and Exit**

Save the changes you have made and exit the utility.

### **Discard Changes and Exit**

Exit the utility without saving the changes you have made.

### **Discard Changes**

Abandon your changes and reload the prior configuration.

### **Load Optimal Defaults**

Select this item to load the default settings for optimal system performance.

Appendix

A

# Specifications



## Product Specifications

Product specifications may be different according to models. Please refer to the catalogue offered when you purchase the product.

Feature	Specifications
CPU	Intel® Atom Z520
OS	Microsoft Windows XP Edition SP3
Chipset	Intel® US15W
Memory	1GB SO-DIMM, DDR2 533MHz
HDD	120GB / 160GB / 250GB / 60GB / 80GB
Graphic System	- S3 CHROME 530 ULP - 256MB External Graphics Memory
Display	- Primary LCD : 14.0" Wide TFT-LCD with LED Backlight Design (1366×768) - Secondary LCD : 7.0" Wide TFT-LCD with LED Backlight Design (1024×600)
Sound System	High Definition Audio
LAN	1000 BASE-TX/100BASE-TX/10BASE-T
Wireless LAN	802.11 b/g/n
Pointing device	Touch Screen
Camera	1.3M / USB2.0
Speaker	Stereo Speaker (0.5W+0.5W)
Power Supply	65W, AC Adapter, 100 ~ 240V, 20V / 2.25A
System Size and Weight	- Size: 362.23 mm (W) X 245.6 mm (H) X 32.1 mm (D) (Secondary LCD Folding) 362.23 mm (W) X 370.3 mm (H) X 32.1 mm (D) (Secondary LCD Unfolding) - Weight: 2.5 kg

Feature	Specifications
Environmental Requirement	Temperature - Operation: +5 oC to 35 oC - Storage: -10 oC to 55 oC
	Humidity - Operation: 30 % to 80 % (noncondensing) - Storage: 20 % to 90 %
Interface	- Right: HOLD Switch, Buttons (Sleep, Power, and PT), USB 2.0 x 3 - Left: WLAN On/Off Switch, Volume Up/Down Buttons, Headphone Jack, RJ-45 Jack, D-Sub 15pin Connector, Power Jack - Front: Webcam, Internal MIC, Stereo Speakers, Touch Buttons (DVsn and CAM) LED Status Indicators (POWER, SLEEP, HOLD, BEAM, HDD, and CHARGER) - Touch Screen
Battery	Lithium ion Battery (11.1V, 3400mAh)
AC adapter	Input 100-240V, 50/60Hz

**AVERATEC**

*My Life, My Style*