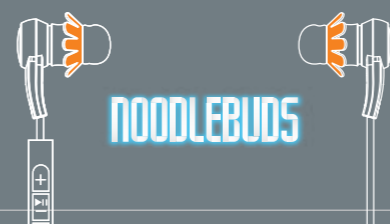


# USER GUIDE

Wireless Bluetooth Earbuds

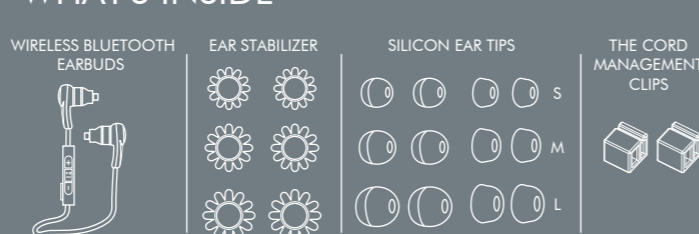


## INDEX

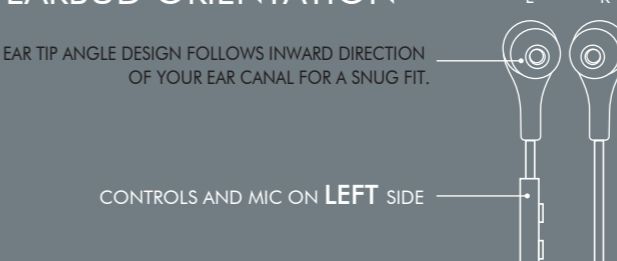
BASIC SETUP	02
SETTING UP AND FITTING	02
OVER-EAR FITTING	14
USING THE EARBUDS	30
ACCESSORIES	31
CHARGING THE BATTERY	31
PAIRING	33
COMMANDS	37
SPECIFICATION	38
WARRANTY	39

## SETTING UP AND FITTING

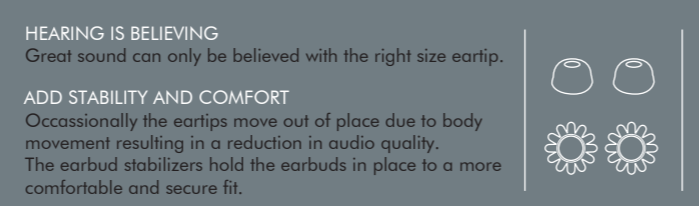
### 01 WHAT'S INSIDE



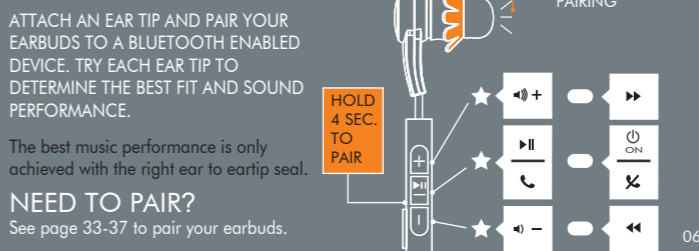
### 02 EARBUD ORIENTATION



### 03 THE RIGHT SIZE FOR GREAT SOUND PERFORMANCE



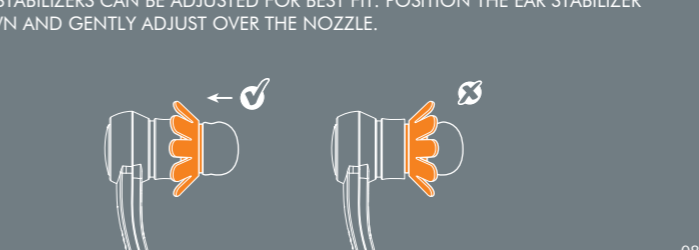
### 04 PROPER FITTING



### 05 COMFORT AND SECURITY



THE EAR STABILIZERS CAN BE ADJUSTED FOR BEST FIT. POSITION THE EAR STABILIZER AS SHOWN AND GENTLY ADJUST OVER THE NOZZLE.



THE STABILIZERS ARE ONLY AVAILABLE FOR THE TYPE OF EAR TIPS INDICATED IN THE ILLUSTRATION.

ROTATE THE STABILIZER SO IT FITS UNDERNEATH THE RIM OF THE EAR STEM. ONCE ADJUSTED, THE STABILIZER FITS UNDER THE EAR STEM AND CREATES A COMFORTABLE SNUG FIT.

### 06 Connected



## OVER-EAR FITTING

THE OVER-EAR FITTING OPTION IS DESIGNED FOR PURE LISTENING PLEASURE. THE MICROPHONE AND CONTROLS ARE LOCATED BEHIND THE EAR IN THIS FITTING OPTION. WHILE OVER-EAR FITTING IS A GREAT WAY TO LISTEN TO MUSIC, SOME ADJUSTMENT IS REQUIRED TO FIT THE EARBUDS CORRECTLY.

### 01 YOU CHOOSE YOUR EAR TIPS FOR COMFORT AND STABILITY...

NOW IT'S TIME TO EXPERIENCE PURE MUSIC PLEASURE. THIS IS THE OVER-EAR FITTING OPTION. IT IS NOT NECESSARY TO REMOVE THE EARBUD STABILIZERS TO ADJUST THEM FOR AN OVER-EAR FITTING.

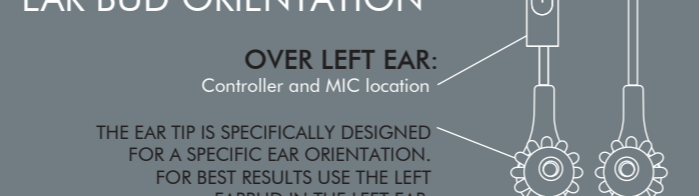
### 02 COMFORTABLY SECURED

INSERT THE EARBUD IN YOUR EAR AND ADJUST AS THE EAR STABILIZER NEEDED FOR MAXIMUM COMFORT. IT IS BEST TO TEST EACH EAR TIP TO DETERMINE THE BEST FIT AND SOUND PERFORMANCE.

INSTALL THE EAR STABILIZER OVER THE EARBUD AS SHOWN. TO ADJUST THE FIT, ROTATE THE STABILIZER ON THE EARBUD.

THE EARBUD AND EAR TIP DESIGN IS INTENDED TO FIT COMFORTABLY IN THE EAR CANAL. IN COMBINATION WITH THE EARBUD STABILIZER, YOUR EARBUDS MAKE LISTENING TO MUSIC SHEER ECSTASY.

### 03 EAR BUD ORIENTATION



### 04 CORD MANAGEMENT CLIPS



OVER-EAR MODE REQUIRES LESS CORD, SO BEFORE FITTING, INSTALL THE CORD MANAGEMENT CLIPS TO SECURE THE SLACK FOR A CUSTOMIZED FIT. SEE NEXT STEPS.

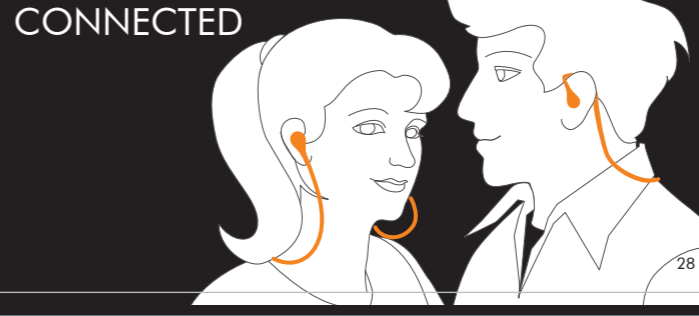
MAKE AN "S" SHAPE WITH THE MIDDLE SECTION OF THE CORD.

INSERT CORD INTO THE 2 SLOTS IN EACH CLIP AS SHOWN.

USE YOUR FINGER TO GENTLY INSERT THE EARBUDS IN YOUR EAR.

TAKE OFF HEADPHONES, INSERT CORD INTO THE FINAL ROUNDED SLOTS, PUT HEADPHONES BACK ON, NOW YOU ARE READY TO GO!

### 05 CONNECTED



## ACCESSORIES

- Wireless bluetooth earbuds
- Carrying case
- 3 earbuds pairs (S/M/L)
- 1 ear stabilizer pair
- 2 cord management clips
- 1 USB cable
- 1 quick start guide

## CHARGING

Before using your Bluetooth earbuds, make sure you fully charge them to extend the life of the battery. To access the USB port (controller box), pull back the cover to expose the USB port. Insert the USB cable into the port. The LED light starts red and turns blue once charging is complete. A full charging requires up to 1.5 hours. To check earbuds' battery status, turn earbuds on, top volume up or down to trigger a status response. Note: When listening to music, top Pause and wait for blue LED to flash rapidly. Top volume up or down to trigger a status response.

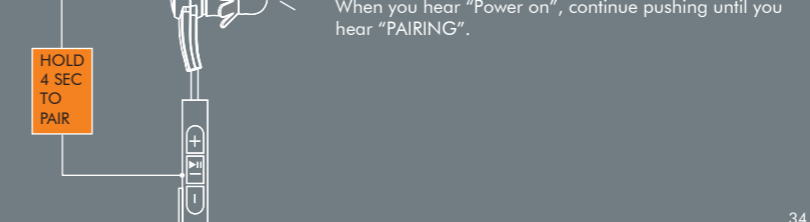
## LED STATUS

Red (USB cable connected): Charging  
Blue (USB cable connected): Charged  
Red+Blue (Alternating): Pair Mode  
LED Off: Powered Off  
Voice Prompts: Top the + & - buttons to change language\*. Press the + & - buttons for 2 seconds to toggle Voice Prompt on. Press the + & - buttons for 5 seconds to toggle Voice Prompt off.

## PAIRING TO YOUR PHONE / MUSIC DEVICE THE FIRST TIME

- Press and hold the audio/call button for more than four seconds. The LED flashes an alternating red and blue indicating the pairing process is ongoing.
- Turn on the Bluetooth on your phone/device and allow it to search for new devices.
- Select the [NOODLEBUDS] to initiate pairing. If a password is necessary, enter 0000. After successfully pairing to your phone/device, an audible prompt "Headset connected" is heard.
- If the pairing is not successful, power down the earbuds by pressing the audio/call button for four seconds. Repeat the pairing process once again.

## PAIRING MODE: ALTERNATING RED AND BLUE LEADS



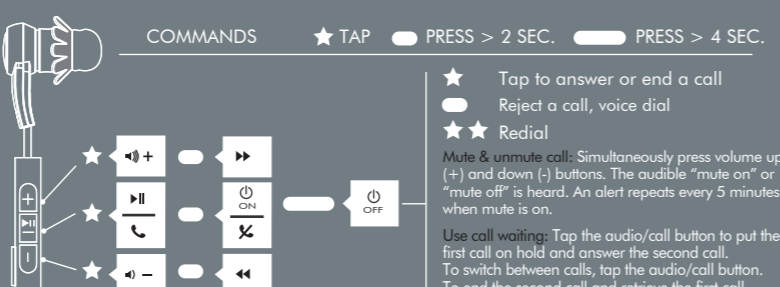
## PAIRING WITH A BLUETOOTH ADAPTER

- Once the initial pairing has taken place, you may want or require to pair to other smart devices.
- Set the earbuds in pairing mode: If earbuds are powered off, press and hold the audio/call button until the audible "pairing" sounds. The LED alternates between blue and red to indicate a pairing mode.
  - Activate the Bluetooth function on your smart device and allow it to search for devices.
  - On your smart device list, select [NOODLEBUDS]. If a password is necessary, enter 0000. After successfully pairing to your phone/device, an audible prompt "headset connected" is heard.

## PAIRING WITH SEVERAL BLUETOOTH DEVICES

Once a device is paired to the Handsfree Bluetooth Earbuds, you do not need to pair it again. Up to eight smart devices can be paired to the earbuds. Follow the same instructions as provided previously to pair new devices. Once the total of eight devices are paired and upon pairing the ninth device, the oldest paired device will be deleted from the memory list. Switching between paired devices is easy. Turn off the Bluetooth function on the smart devices to disconnect them from the Wireless Bluetooth Earbuds. Turn on the Bluetooth function of the device that requires the connection and, from the device list, press the [NOODLEBUDS] to re-connect.

## COMMANDS



## SPECIFICATIONS

Bluetooth v4.2 (Bluetooth LE) support  
Profile: HFP v1.2, HSP v1.2, A2DP v1.2, AVRCP v1.4  
Frequency Range: 2400 - 2483.5 MHz  
Power: 0 dBm (max) 10 dBm  
Audio Codec: SBC, AAC, aptX  
Frequency Response: 20 Hz - 20 kHz  
Impedance: 16 Ohm  
Weight: 14.5g

## WARRANTY, CARE & MAINTENANCE

Full warranty, care and maintenance details at <http://www.noodlebuds.com>

## REGISTER YOUR DEVICE TO RECEIVE UPDATE INFORMATION

<http://www.noodlebuds.com>

## GREAT MUSIC REQUIRES GOOD EARS

Avoid prolonged periods of use and excessive audio levels. The use of earbuds around road traffic is not advisable.