



Rugged Tablet Computer **User's Manual**

Yuma 2

© 2012 Trimble Navigation Limited. All rights reserved.

TRADEMARKS

Trimble and the Globe & Triangle logo are trademarks of Trimble Navigation Limited, registered in the United States Patent and Trademark Office and in other countries. Yuma 2 is a trademark of Trimble Navigation.

Microsoft, Windows, and the Windows logo are either registered trademarks or trademarks of Microsoft Corporation in the United States and/or other countries. Microsoft products are licensed to OEMs by Microsoft Licensing, Inc., a wholly owned subsidiary of Microsoft Corporation.

The Bluetooth® word mark and logos are registered trademarks owned by Bluetooth SIG, Inc.

All other brand and product names are trademarks or registered trademarks of their respective owners.

NOTE

Display images shown may vary slightly from actual display. Information in this manual is subject to change without notice.

Contents

CHAPTER 1: Getting Started	1-1
Unpacking	1-2
Device Overview	1-3
Front View.....	1-3
Rear View	1-5
Bottom View.....	1-6
Installing the Stylus	1-7
Removing the Stylus.....	1-7
Installing the SIM Card	1-8
Installing the Battery Packs	1-9
Connecting to AC Power	1-10
Turning the Tablet Computer On and Off	1-11
Turning On.....	1-11
Turning Off.....	1-12
CHAPTER 2: Operating Your Tablet Computer	2-1
Using the Touch Screen	2-2
Calibrating the Screen	2-3
Using the Input Panel	2-4
Opening the Input Panel.....	2-5
Managing the Input Panel.....	2-5
Using the Control Panel	2-6
Using the Hotkeys.....	2-6
Using the Hotkey Configuration Tool	2-7
Adjusting Volume	2-11
Adjusting Screen Brightness.....	2-11
Using Wireless LAN	2-12
Turning the Wireless Antenna On and Off	2-12
Connecting to a Wireless Network.....	2-13

Using Bluetooth	2-14
Turning the Bluetooth Adapter On and Off.....	2-14
Pairing with Bluetooth Devices	2-14
Configuring Bluetooth Settings	2-17
Using 3G Network	2-18
Connecting to 3G Network.....	2-18
Using AirCard® Watcher.....	2-19
Configuring AirCard® Watcher Settings.....	2-21
Using GPS.....	2-24
Position	2-24
Satellites	2-25
Using the Accelerometer / Compass	2-26
Activating the Accelerometer	2-26
Using the Compass	2-26
Using the Camera	2-28
Opening the Camera	2-28
Shooting Photos	2-29
Recording Videos	2-30
Playing Videos	2-31
Working With Photos	2-32
Working with Videos	2-38
Managing Camera Application Settings.....	2-42
CHAPTER 3: Expanding Your Tablet Computer	3-1
Connecting USB Devices	3-2
Connecting HDMI Devices	3-3
Connecting Audio Devices	3-4
CHAPTER 4: Managing Power	4-1
Battery Pack.....	4-2
Charging the Battery Pack.....	4-2
Checking the Battery Level.....	4-3
Replacing the Battery Pack	4-4
Power Management	4-5
Power Saving Tips.....	4-6
CHAPTER 5: Using BIOS Setup and System Recovery.....	5-1
BIOS Setup	5-2
When to Use	5-2
How to Use	5-2

CHAPTER 6: Maintenance and Troubleshooting	6-1
Taking Care of the Tablet Computer.....	6-2
Location Guidelines	6-2
General Guidelines.....	6-2
Cleaning Guidelines.....	6-2
Touchscreen Guidelines	6-2
Troubleshooting.....	6-3
APPENDIX A: Specifications	A-1
Tablet Computer Specifications.....	A-1
APPENDIX B: Regulatory Information	B-1
Important Information	B-2
Safety Information (EN)	B-3
Safety Information (FR)	B-4
About the Batteries	B-5
About the Adapter	B-5
FCC Regulations	B-6
RF Exposure Information (SAR)	B-7
IC Regulations.....	B-7
Important Note	B-8

Preface

This manual contains information that will help you operate this rugged tablet computer. It is divided into six chapters and two appendices.

- **Chapter 1: Getting Started**, takes you through the process of setting up your tablet computer and identifying its external components.
- **Chapter 2: Operating Your Tablet Computer**, tells you how to use the tablet computer's components and features.
- **Chapter 3: Expanding Your Tablet Computer**, provides information on installing and using peripheral devices.
- **Chapter 4: Managing Power**, provides information on power management.
- **Chapter 5: Using BIOS Setup and System Recovery**, describes the BIOS Setup utility that configures the tablet computer's BIOS settings and system recovery utility that reinstalls Windows to the tablet computer.
- **Chapter 6: Maintenance and Troubleshooting**, provides information on caring for your tablet computer, and gives solutions to common problems you may encounter when using the tablet computer.
- **Appendix A**, provides technical specifications of the Tablet Computer.
- **Appendix B**, provides regulatory information and safety notices on your tablet computer.

Notational Conventions

Throughout this manual, the following conventions are used to distinguish elements of text.

NOTE: Identifies additional information that requires special attention.

TIP: Identifies additional information that provides optional methods for ease of use.

CAUTION: Identifies important information that, if not followed, may result in loss of data or damage to the tablet computer..

WARNING: Identifies important information that, if not followed, may result in damage to properties or danger to users.

Hardware and keyboard keys are shown in a bold typeset. For example:

Press the **F1** key to complete.

A title, command, setup item, value, option, or button that you can see on the screen is shown in boldface. For example:

Select **When I press the power button**, set it to **Shut down**, and then tap the **Save changes** button.

Getting Started

Congratulations on purchasing this rugged tablet computer. The rugged design allows you to use it in harsh outdoor environments. You can use it under blazing heat, subzero cold, driving rain or dusty surroundings – places you could not take a consumer-grade tablet computer.

This chapter tells you step by step how to get the tablet computer up and running. You will find instructions for the following procedures:

- Unpacking
- Device Overview (An Explanation of External Components and their Functions)
- Installing the Stylus
- Installing the SIM Card
- Installing Battery Packs and Connecting to AC Power
- Turning the Tablet Computer On and Off

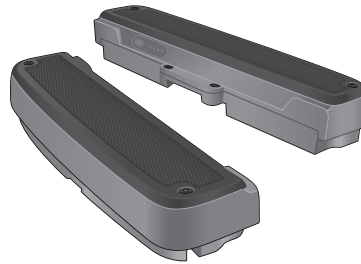
Unpacking

After unpacking the shipping carton, you should find these standard items. Inspect all items. If any item is damaged or missing, notify your dealer immediately.

√ Tablet Computer



√ Battery Pack x 2



√ Power Adapter



√ Power Cord and Plugs



√ Stylus



√ Tether for Stylus



√ Cleaning Cloth

√ Screen Protector Film

√ Windows 7 Certificate of Authenticity Label (COA)

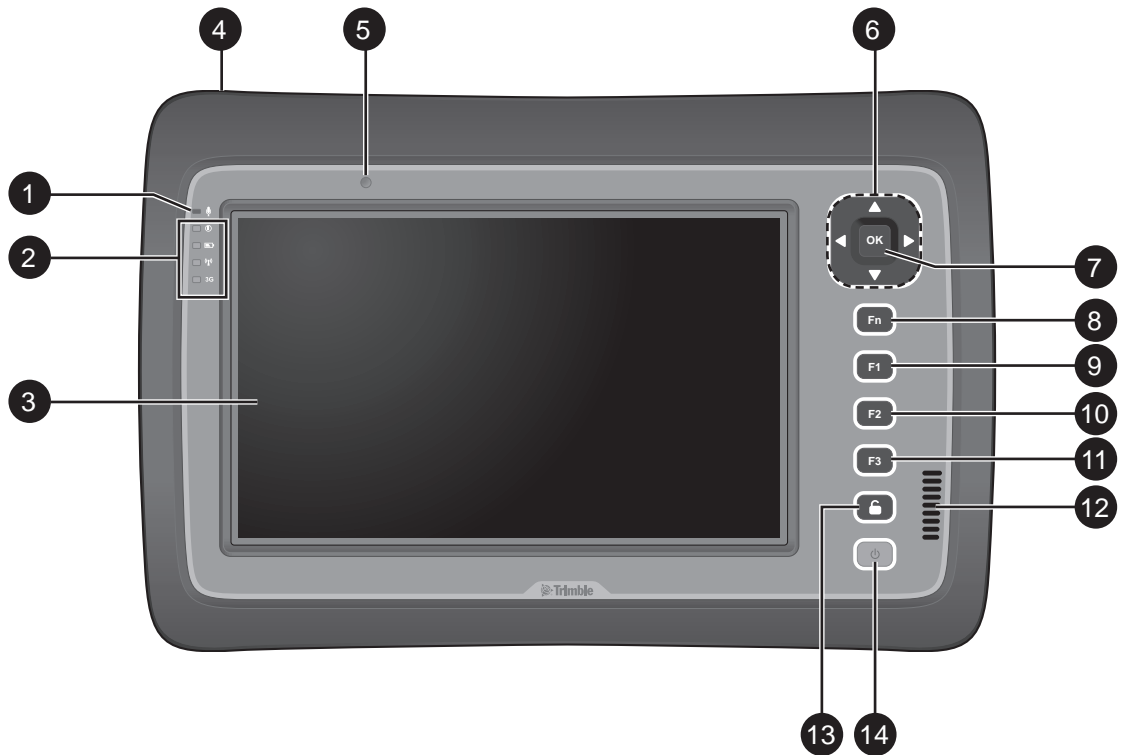
√ Quick Start Guide

Keep the shipping carton and packaging materials in case you need to ship or store the tablet computer in the future.



NOTE: Actual items may slightly differ depending on the model you purchased.

Device Overview

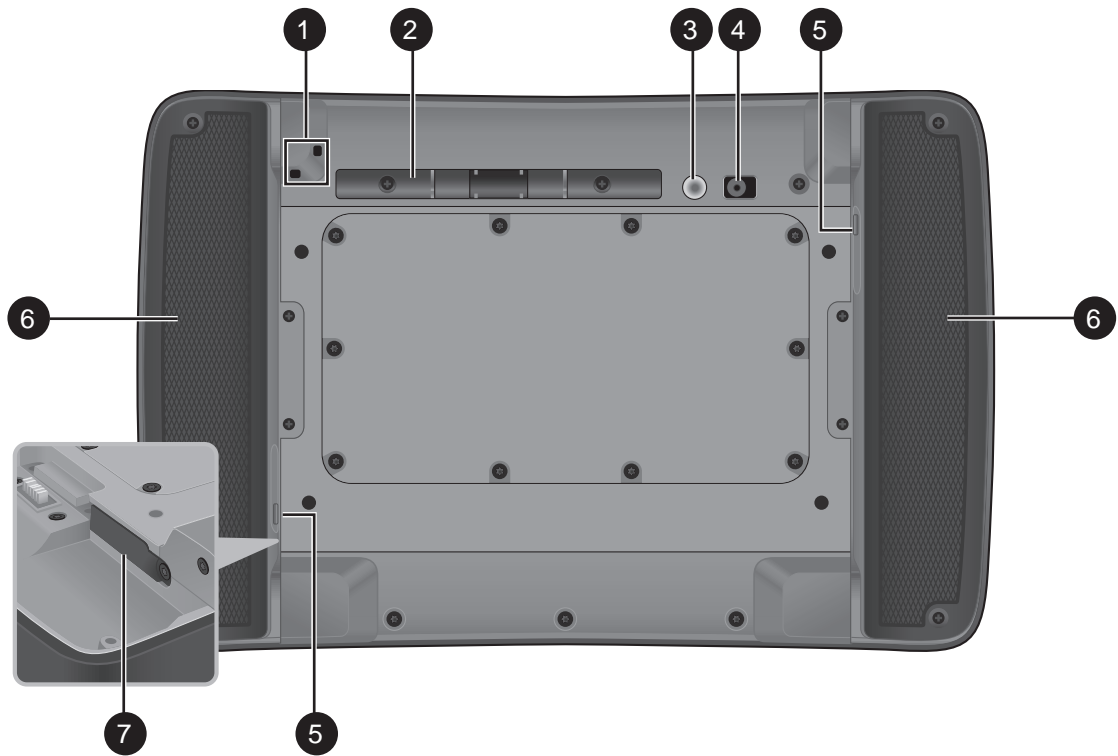
Front View



No.	Item	Description
1	Microphone	Use for talking and other interactive applications.
2	LED Indicators	Shows the current status of the tablet computer.
	ⓘ Power	<ul style="list-style-type: none"> Solid green: Tablet computer is turned on Blinking green: Tablet computer is in sleep mode. Off: Tablet computer is turned off.
	🔋 Battery	<ul style="list-style-type: none"> Solid amber: Battery is charging Solid green: Battery is fully charged. Blinking red: Battery power is low.
	📶 Wireless	Solid green: Wireless antenna is enabled. Off: Wireless antenna is disabled.
	3G 3G	Solid green: 3G data connection is active. Off: 3G data connection is inactive. Note: 3G LED is not available in all models.

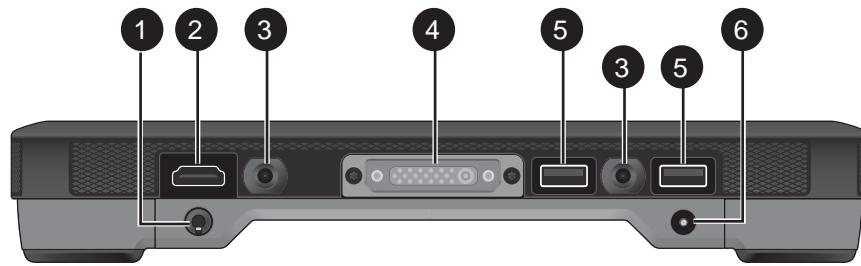
No.	Item	Description
3	Touch Screen	Displays and receives information for the tablet computer.
4	Kensington Lock	Provides lock mechanism security.
5	Ambient Light Detector	Detects surrounding light and adjusts the screen brightness according to the ambient light.
6	Directional Buttons	Serves as the up / down / left / right arrow keys.
7	OK Button	Serves as the Enter key.
8	Fn (Function) Button	<ul style="list-style-type: none"> • Press to display the button functions and toggle between Button Setting A, B, and C. • Press Fn + F1 / F2 / F3 to open the corresponding applications. For example: <ul style="list-style-type: none"> • Fn + F1: Virtual keyboard • Fn + F2: Internet Explorer • Fn + F3: ALS Auto/Manual
9	F1 Button	Press to launch Windows Help .
10	F2 Button	Press to launch F2 command in Windows.
11	F3 Button	Press to launch F3 command in Windows.
12	Speaker	Sends out sound and voice from your tablet computer.
13	Pad Lock Button 	Press to access the log-in menu, similar as pressing Ctrl + Alt + Del on a computer.
14	Power Button 	<ul style="list-style-type: none"> • Short press to turn the tablet computer on. • When powered on, short press to enable sleep mode. • When powered on, long press to turn the tablet computer entirely off.

Rear View

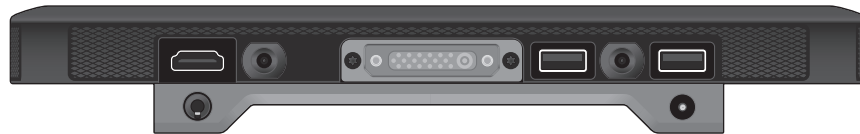


No.	Item	Description
1	Eyelet	Holds the tether strap.
2	Stylus Holder	Stores the stylus.
3	Camera Flash	Provides flash lighting for use with the camera.
4	CMOS Camera	Allows you to use the camera features.
5	Battery Capacity Indicator	Press the button to light the battery capacity LEDs. More lit LEDs indicate more battery power. The LEDs automatically go off after 5 seconds.
6	Battery Packs	Supplies power to your tablet computer when external power is not connected.
7	SIM Card Slot	Stores the SIM card which provides 3G data connection to your tablet computer.

Bottom View



With Battery Packs



With Battery Packs Removed

No.	Item	Description
1	Audio Connector (Line in / Line out)	Connects to a set of headphones, external speakers, or an audio recording device with 3.5 mm jack.
2	HDMI Connector	Connects to an HDMI device such as an external monitor.
3	Docking Holes	Docking holes to support a docking station (optional).
4	Docking Connector	Connects to a docking station (optional).
5	USB Ports	Each port connects to a USB device, such as a USB flash drive, mouse, printer, keyboard, etc.
6	Power Connector	Connects to the AC adapter.

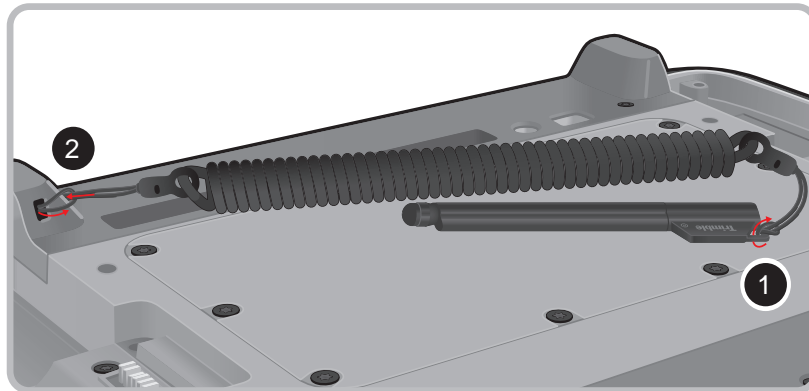
Installing the Stylus

Your tablet computer comes with a stylus for use with the touch screen.

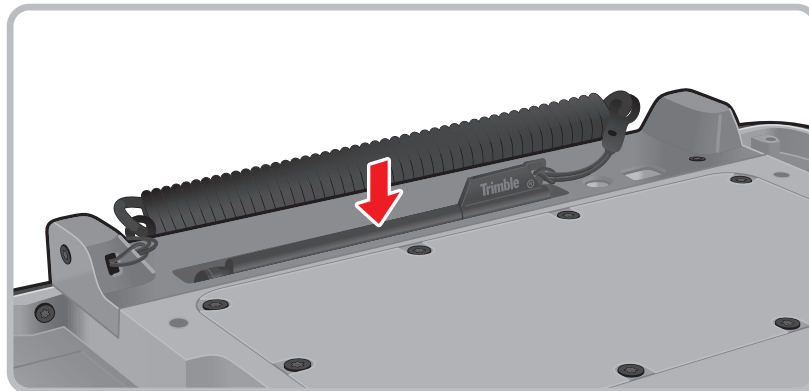
The stylus holder at the back of the tablet computer provides a convenient place to store the stylus.

Perform the following to prepare and install the stylus to your tablet computer:

1. Loop one end of the tether to the stylus eyelet.
2. Loop the other end of the tether to the tablet computer eyelet.



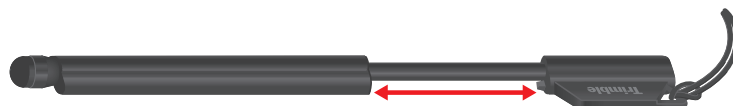
3. Push the stylus on the stylus holder until it locks into place.



Removing the Stylus

Lift the stylus by its tab to remove it from the stylus holder.

For convenience of use, pull the tab to extend the stylus length.

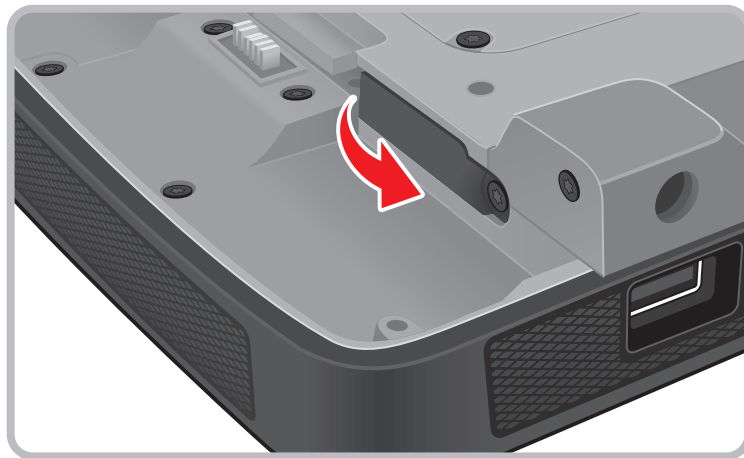


Installing the SIM Card

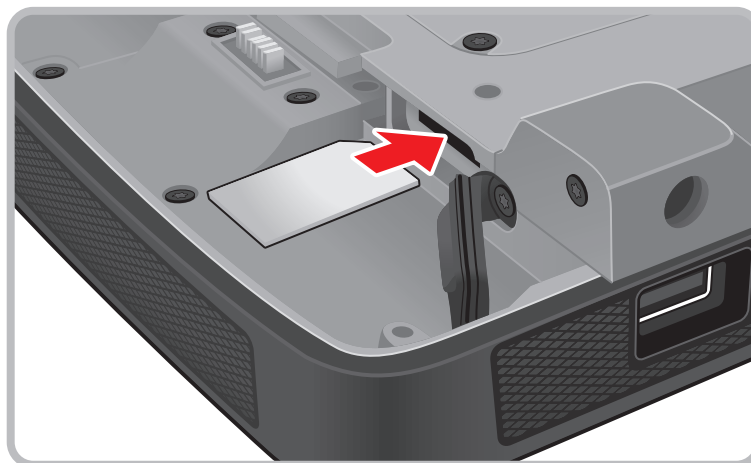
The tablet computer supports data connection using 3G SIM cards.

Perform the following to install the SIM card to your tablet computer:

1. With battery packs removed, locate the SIM card slot on the back of the tablet computer.
2. Open the SIM card slot cover.



3. Insert the SIM card with the gold contacts facing down.



4. Close the SIM card slot cover.

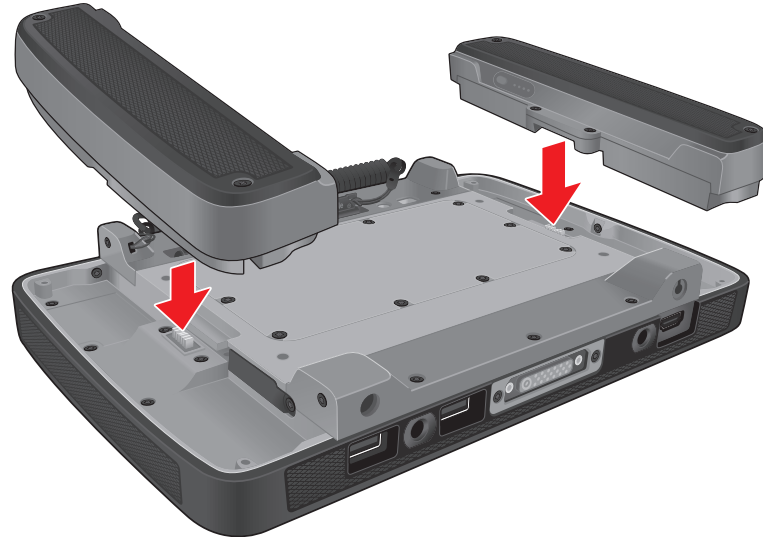
NOTE:

- SIM cards must be purchased separately.
- CDMA and GSM SIM cards are supported.
- To avoid damage to the card and ensure network connectivity, turn off the device power before installing or removing the SIM card.
- For more information on connecting to 3G network, see "Using 3G Network" on page 2-18.

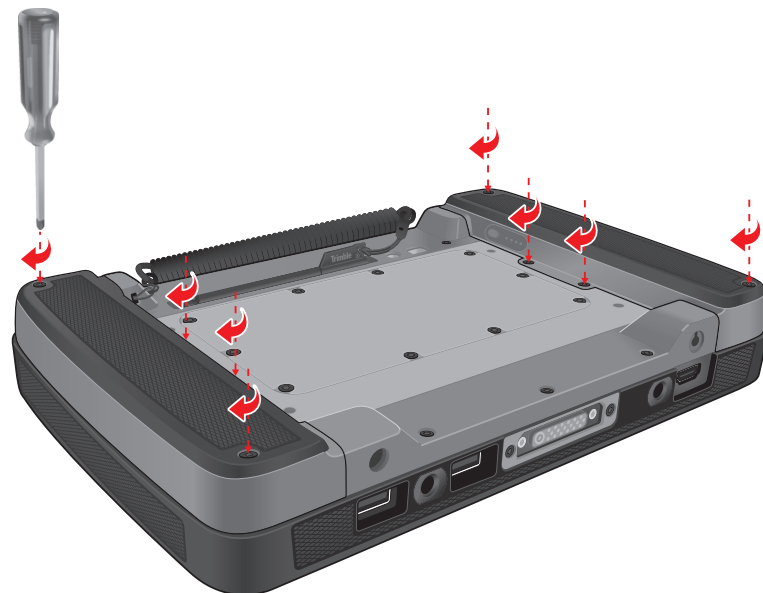
Installing the Battery Packs

Perform the following to install the battery packs to your tablet computer.

1. Place the tablet computer face down on a flat even surface.
2. Fit the two battery packs into place on both sides.



3. Using a small Phillips #1 screwdriver, secure the four screws on each battery taking care not to over tighten.



NOTE: For best results, use a small number 1 Phillips screwdriver.

CAUTION: Do not over torque the screws when installing the batteries.

4. Connect the tablet computer to AC power to charge the battery packs. See “Connecting to AC Power” on page 1-10.

Connecting to AC Power

The tablet computer operates either on the external AC power or internal battery power. It is recommended to use AC power when you start up the tablet computer for the first time.

CAUTION: Use only the AC adapter included with your tablet computer. Using other AC adapters may damage the tablet computer.

Perform the following to connect the tablet computer to AC power:

1. With the battery packs installed, plug the DC cord of the AC adapter into the power connector of the tablet computer.
2. Plug the female end of the AC power cord into the AC adapter.
3. Then plug the male end of the AC power cord into an electrical outlet.



When the AC adapter is connected, the battery packs are charging. The battery LED indicator (🔋) shows three different states:


- **Solid amber:** Battery is charging
- **Solid green:** Battery is fully charged.
- **Blinking red:** Battery power is low.

CAUTION:

- When you disconnect the AC adapter, disconnect from the electrical outlet first and then from the tablet computer. A reverse procedure may damage the AC adapter or the tablet computer.
- When unplugging the connector, always hold the plug head. Never pull on the cord.

Turning the Tablet Computer On and Off

Turning On

1. Make sure that the tablet computer is either connected to AC power or the battery packs are charged.
2. Press the power button . Notice the screen remains blank for 8 ~ 10 seconds but the power LED lights up.



The power LED indicator (①) shows two different states:

- **Solid green:** Tablet computer is turned on
- **Blinking green:** Tablet computer is in sleep mode.
- **Off:** Tablet computer is turned off.



In cold temperature environments, the power LEDs will light up after 2 seconds.

Turning Off

To turn off the tablet computer, use the “**Shut Down**” command of your operating system.

CAUTION: Wait until the screen is black and the LED activity has ceased before turning the computer back on. This may take 5 seconds or longer.

When you finish a working session, you can stop the tablet computer by shutting it down or leaving the tablet computer in Sleep or Hibernation mode:

To stop in this mode...	Do this...
Off	Use the Windows Start Menu and follow the shut down procedure.
	You can force the tablet computer to turn off by pressing and holding the power button  for more than 6 seconds. This is not the recommended method, but may be necessary if the system is locked up.
Hybrid Sleep	Short press the power button  or use the Windows Start Menu to put the tablet computer in Hybrid Sleep mode.
Hibernation	Use the Windows Start Menu to put the tablet computer in hibernation mode.

Press the power button to resume or turn on the tablet computer from any of these modes. See “Power Management” on page 4-5 for more information.

NOTE: By configuring the BIOS Setup Utility, you can have the tablet computer automatically start up or resume when the external AC power is plugged in. See “BIOS Setup” on page 5-2 for more information.

Operating Your Tablet Computer

This chapter provides information about the use of the tablet computer and describes the operating basics of these components and features:

- Touch Screen
- Input Panel
- Control Panel
- Wireless LAN Features
- Bluetooth Features
- 3G Network Features
- GPS Features
- Accelerometer / Compass Features
- Camera

Using the Touch Screen

The touch screen is a touch-sensitive device that allows you to control and make selections on the tablet computer by controlling the location of the pointer on the screen.

CAUTION:

- Do not use sharp, pointed objects or rough gloves on the touch screen. These objects may scratch the screen. Use only the spring-tip end of the stylus, the tip of your finger or woven fiber, conductive gloves suitable for touch screens.



Here are some common terms that you should know when using the touch screen.

Term	Action
Tap	Tap gently on the touch screen to select or open an item. Tapping is the same as clicking the left mouse button of a PC.
Double-tap	Rapidly tap twice on the touch screen. This action is similar to double-clicking the left mouse button of a PC.
Tap and hold	Tap and hold the stylus lightly on the display. A big circle appears to indicate that a pop-up menu will soon appear. Lift up the stylus and a pop-up menu appears. Select the desired function. This action is similar to a right mouse click on a PC.
Drag	Hold the stylus on the screen and drag across the screen to select text and images or move icons to a new location.

For more customized stylus settings, go to **Start > Control Panel > Pen and Touch**.

Calibrating the Screen

When there is a noticeable discrepancy in the placement of the stylus on the screen and the indicated position of the on-screen pointer, re-calibrate the screen.

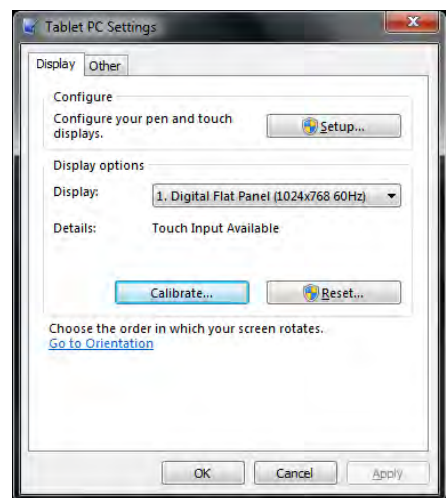
There are two types of calibrations:

- **Reset:** This resets the screen calibration to the factory default settings.
- **Manual Calibration:** This allows users to manually calibrate the screen.

To reset the screen calibration

Perform the following to reset the screen calibration to its default settings:

1. Tap **Start > Control Panel > Tablet PC Settings**.
2. On the **Display** tab, tap **Reset**.



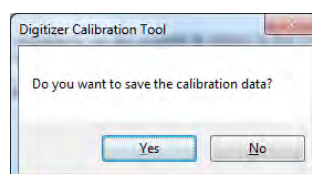
To manually calibrate the screen

Perform the following to manually calibrate the screen:

1. Tap **Start > Control Panel > Tablet PC Settings**.
2. On the **Display** tab, tap **Calibrate**.
3. Tap the cross-hair with the stylus as it moves around the screen.



4. When calibration is complete, tap **Yes** to close the calibration utility screen.



Using the Input Panel

The Tablet Computer Input Panel is a virtual keyboard that allows you to enter text and perform various keyboard functions.

There are two types of Input Panels for you to use:

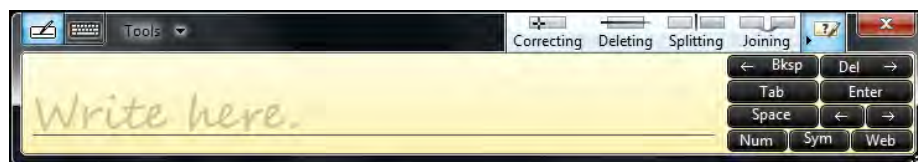
- **Touch Keyboard**

Allows you to enter text by tapping the keys with the stylus, like pressing the keys on a standard keyboard.



- **Writing Pad**

Allows you to write on the writing pad, like writing on a piece of paper. Your handwriting will be converted into typed text.

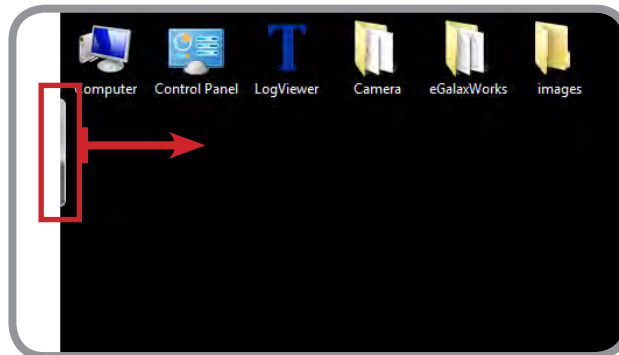


Opening the Input Panel



To open the Input Panel

There are two ways to open the Input Panel.

- Press Fn + F1
- From the left side of the screen, drag the edge of the Input Panel towards the center.



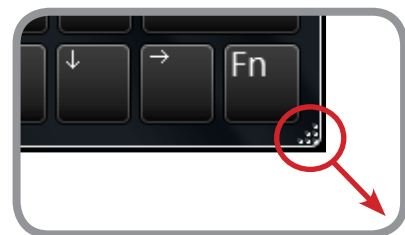
To switch between keyboards

To switch between the Touch Keyboard and the Writing Pad, tap  or  at the upper left corner of the Input Panel.

Managing the Input Panel

To change the Input Panel size

To increase the size of the Input Panel, select the lower right corner of the Input Panel and drag.



To position the Input Panel

The Input Panel floats on top of the screen by default. To move the Input Panel to an area on the screen, place the stylus on the title bar and drag the Input Panel to a new location on the screen.

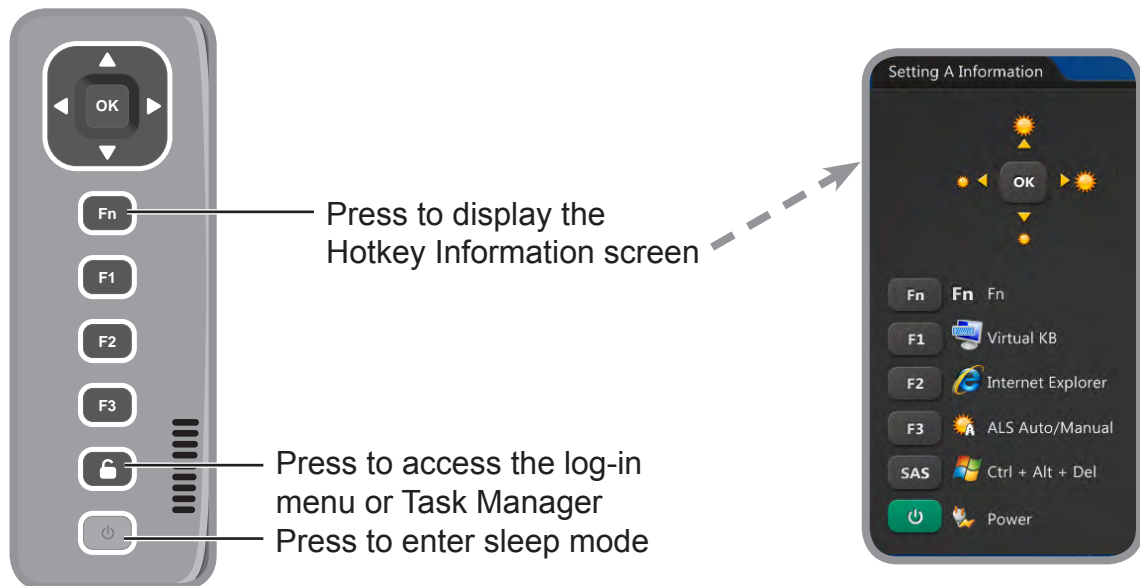
To dock the Input Panel

You can dock the Input Panel so that it is anchored at the top or the bottom of the screen. On the Input Panel, tap **Tools** > **Docking**, and tap **Dock at top of screen** or **Dock at bottom of screen**.

NOTE: For more information on using the Input Panel, see Windows' online help.

Using the Control Panel

The Control Panel provides shortcuts for you to utilize the applications and functions of your Tablet Computer, such as opening an application, adjusting the brightness setting or volume, and others.



Using the Hotkeys

Press and release the Fn key to temporarily display the **Hotkey Information** screen. The buttons have four settings: **Setting Default**, **Setting A**, **Setting B**, and **Setting C**.

By pressing a hotkey or a combination, you can open an application, enable functions, or bring up the Input Panel.

By default, the following hotkeys are configured with the corresponding applications:

	Hotkeys	Applications to Access
Setting Default (Main Level)	▲ / ▼ / ◀ / ▶	Up, Down, Left, Right
	F1	Windows Help
Setting A (First Level)	Fn + ▲ / ▼ / ◀ / ▶	Adjust Brightness
	Fn + F1	Virtual Keyboard (Input Panel)
	Fn + F2	Internet Explorer
	Fn + F3	ALS Auto/Manual

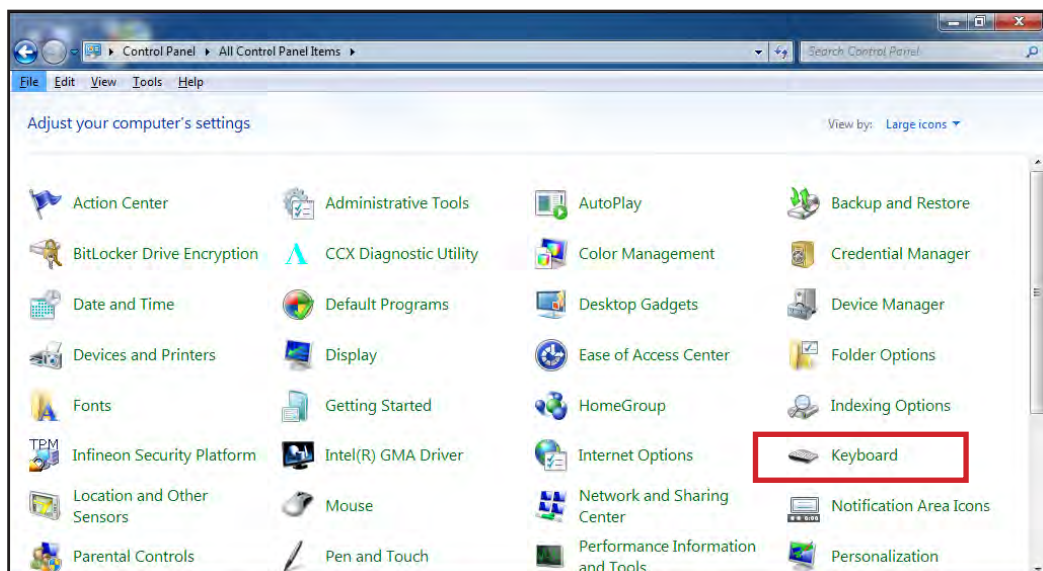
	Hotkeys	Applications to Access
Setting B (Second Level)	Fn + Fn + ▲ / ▼ / ◀ / ▶	Adjust Volume
	Fn + Fn + F1	Wifi
	Fn + Fn + F2	Bluetooth
	Fn + Fn + F3	3G
Setting C (Third Level)	Fn + Fn + Fn + ▲ / ▼ / ◀ / ▶	Up, Down, Left, Right
	Fn + Fn + Fn + F1	F1
	Fn + Fn + Fn + F2	F2
	Fn + Fn + Fn + F3	Microsoft Website

Using the Hotkey Configuration Tool

To suit your needs, you can modify the associated applications or commands to hotkey combinations using the **Hotkey Configuration Tool**.

To Open the Hotkey Configuration Tool

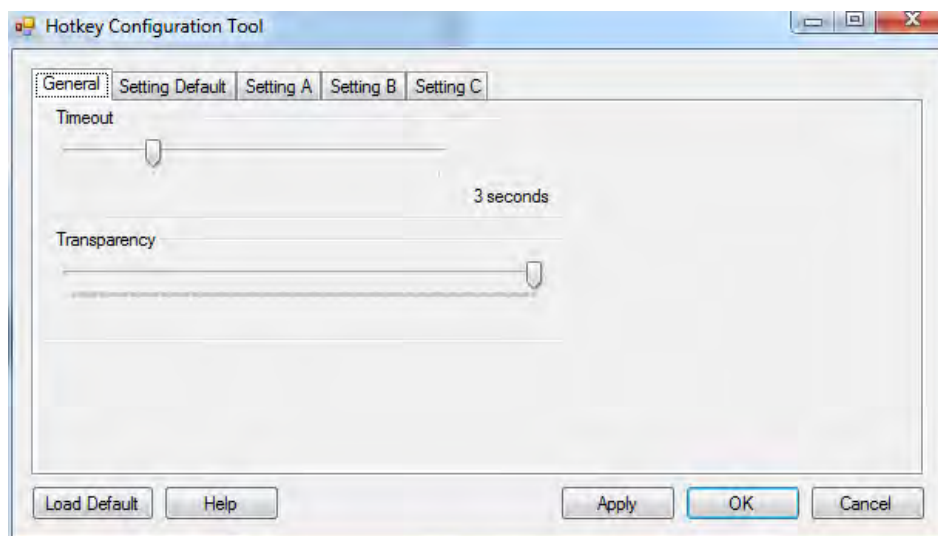
1. Tap **Start > Control Panel > Keyboard**.



2. The Keyboard Properties screen appears. Tap the **Hotkey setting** tab.



3. Tap **Configuration Tool** to open the **Hotkey Configuration Tool** screen.



The Hotkey Configuration Tool has five page tabs:

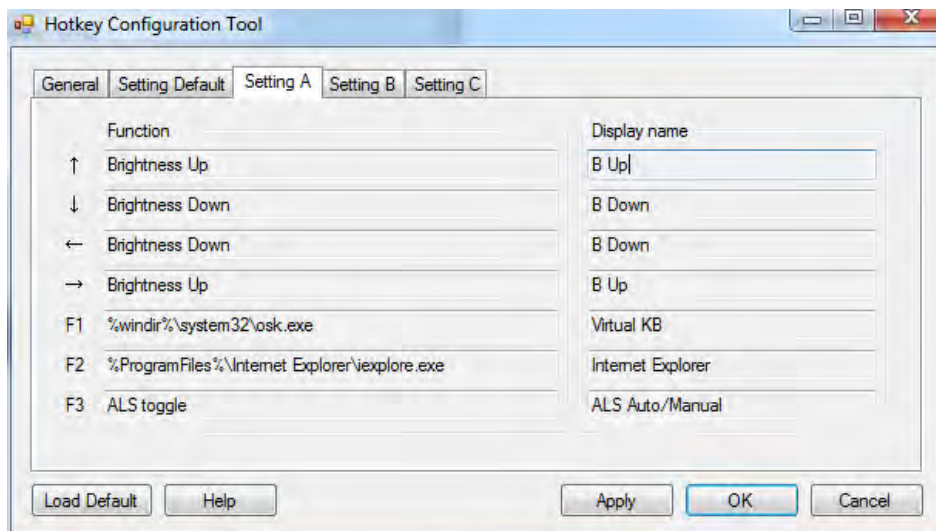
- **General:** To configure the hotkey screen timeout and transparency.
- **Setting Default:** To configure the main hotkeys.
- **Setting A:** To configure the first level hotkey combination.
- **Setting B:** To configure the second level hotkey combination.
- **Setting C:** To configure the third level hotkey combination.

To adjust screen timeout and transparency

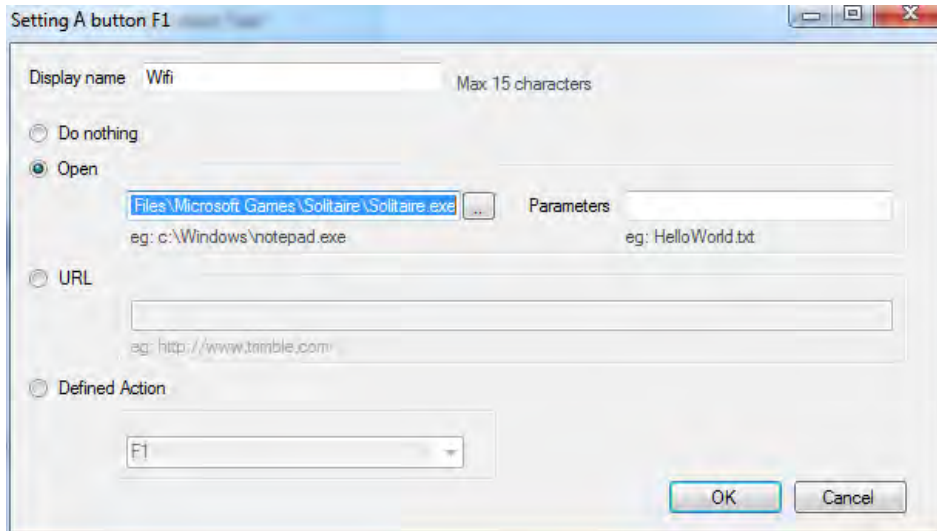
1. Open the **Hotkey Configuration Tool**.
2. On the **General** tab, do the following:
 - Slide the **Timeout** bar to the left or right to decrease or increase the Function key screen timeout (in seconds).
 - Slide the **Transparency** bar to the left or right to adjust the Function key screen transparency.
3. Tap **Apply** to apply changes.

To configure the hotkeys

1. Open the **Hotkey Configuration Tool**.
2. Tap one of the following tabs:
 - **Setting Default**: To configure the main level hotkeys ▲, ▼, ◀, ▶, F1, F2, F3 on the control panel.
 - **Setting A**: To configure the first level hotkeys. First level hotkeys refer to hotkey combination Fn + ▲ / ▼ / ◀ / ▶ / F1 / F2 / F3.
 - **Setting B**: To configure the second level hotkeys. Second level hotkeys refer to hotkey combination Fn + Fn + ▲ / ▼ / ◀ / ▶ / F1 / F2 / F3.
 - **Setting C**: To configure the third level hotkeys. Third level hotkeys refer to hotkey combination Fn + Fn + Fn + ▲ / ▼ / ◀ / ▶ / F1 / F2 / F3.



3. Tap the field box of the hotkey that you want to modify. The screen below appears.



4. On the **Display name** box, type a name for the hotkey (maximum of 15 characters only).
5. Tap one of the following buttons:
 - **Do nothing:** To do nothing when the hotkey is pressed.
 - **Open:** To assign an application that will open when the hotkey is pressed. Tap to select the application.
 - **URL:** To set a URL address that will open when the hotkey is pressed. Type the URL address on the box.
 - **Defined Action:** To perform an action or command when the hotkey is pressed. Tap the box and select the action or command from the list.
6. Tap **OK** to go back the previous screen.
7. Tap **OK** to close the screen.

Adjusting Volume

By default, you may perform the following to adjust the volume of your Tablet Computer:

- To increase volume, press Fn + Fn, then press ▲ or ► repeatedly.
- To decrease volume, press Fn + Fn, then press ▼ or ◀ repeatedly.

Adjusting Screen Brightness

By default, you may perform the following to adjust the screen brightness of your Tablet Computer:

- To increase brightness, press Fn, then press ▲ or ► repeatedly.
- To decrease brightness, press Fn, then press ▼ or ◀ repeatedly.

Using Wireless LAN

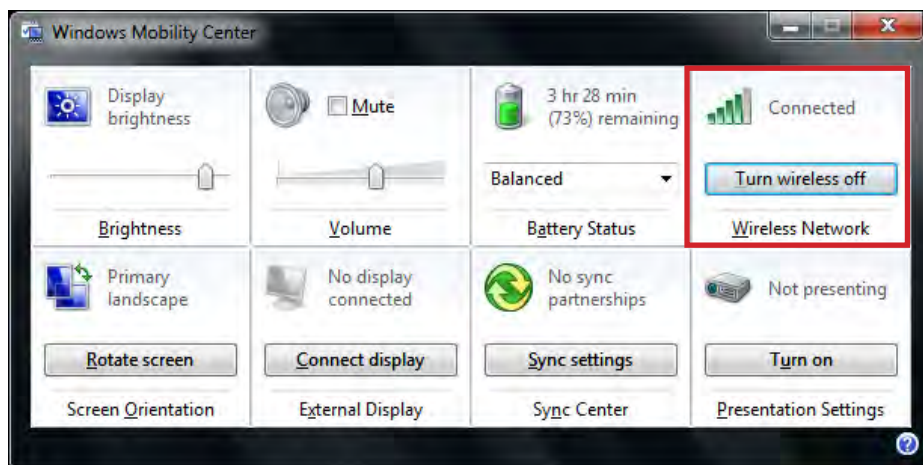
Your Tablet Computer has a built-in wireless antenna which automatically detects wireless networks that are within range.

It takes approximately 30 seconds for your Tablet Computer to make a successful wireless connection and approximately 10 seconds to disconnect.

Turning the Wireless Antenna On and Off


By default, the wireless antenna is turned on. In case you need to turn the wireless antenna on or off, perform the following:

1. Tap **Start > Control Panel > Windows Mobility Center**.
2. To turn the wireless antenna on or off, tap **Turn wireless on** or **Turn wireless off**.



Connecting to a Wireless Network

Perform the following to connect to a wireless network:

1. Make sure that the wireless radio is “on” (The Wireless LED indicator in solid green and the Wireless network icon on the taskbar shows .
2. Tap the Wireless Network icon () on the taskbar.
3. In the list of available networks, tap a network.



4. Tap **Connect**.
5. If the network requires authentication, enter the security key or passphrase.

NOTE:

- Once you are connected to a wireless network, Windows saves the network profile and will automatically connect to that network when it is in range.
- For more information on connecting to a wireless network, see Windows's online help.

Using Bluetooth

Your Tablet Computer has integrated Bluetooth capability for short-range wireless communication between Bluetooth-enabled devices.

By default, the Bluetooth feature is enabled as indicated by the Bluetooth icon (📶) on the taskbar; but your Tablet Computer is not visible to other devices. To make your Tablet Computer visible, check the **Discovery** box in Bluetooth settings (see “Configuring Bluetooth Settings” on page 2-17).

Turning the Bluetooth Adapter On and Off

In case you need to turn the Bluetooth adapter on or off, perform the following:

1. Tap the Bluetooth On (📶) or Bluetooth off (📶 off) icon on the taskbar.
2. A pop up menu appears. Tap **Turn adapter on** or **Turn adapter off**.

NOTE: If the Bluetooth icon is not shown on the taskbar, tap Start > Devices and Printers. Under Devices, tap and hold the Bluetooth adapter icon, a pop up menu appears. Tap Bluetooth settings, then check **Show the Bluetooth icon in the notification area**, and tap OK.

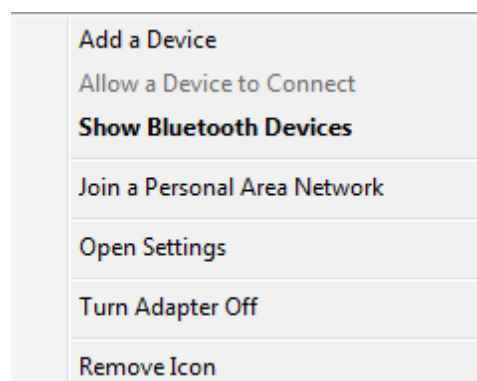
Pairing with Bluetooth Devices

Before you can pair with Bluetooth devices for the first time, you need to add and save the device profile to your Tablet Computer.

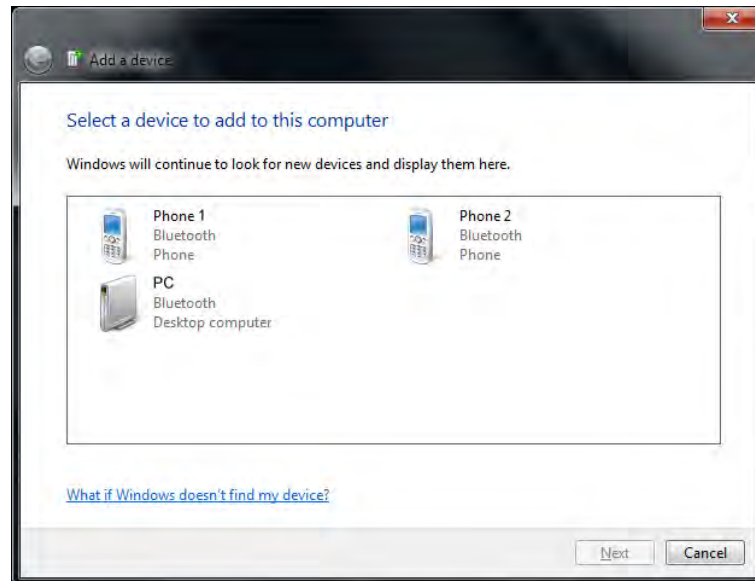
To add and pair a Bluetooth device

Perform the following to pair your Tablet Computer with Bluetooth devices:

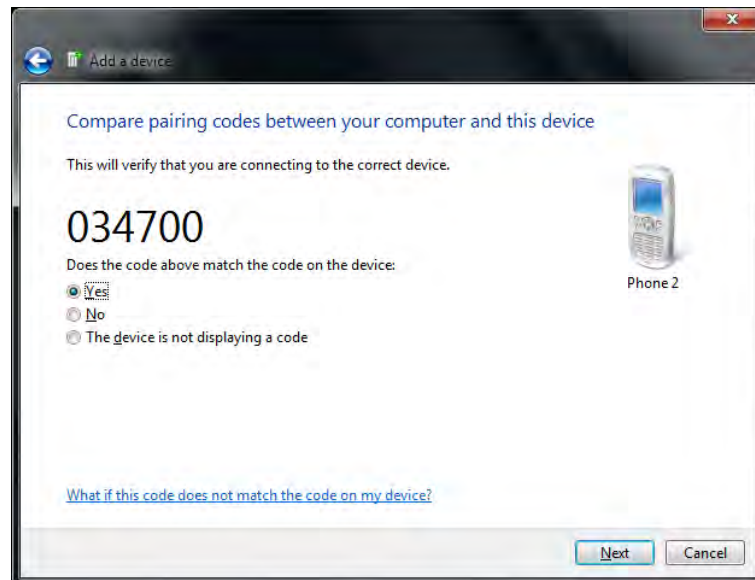
1. Make sure the Bluetooth adapter is on as indicated by the Bluetooth icon (📶) on the taskbar.
2. Tap the Bluetooth icon (📶) to display a pop up menu.



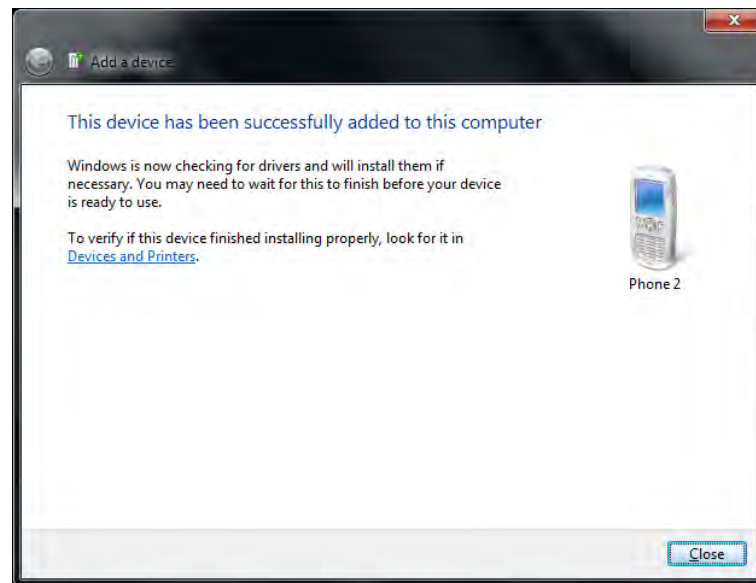
3. Tap **Add a Device**. The Tablet Computer will scan for Bluetooth devices within range.
4. Tap the device you want to pair with, then tap **Next**.



5. Depending on the device you are pairing, you may be prompted to enter or verify the pairing code. The pairing code entered or shown on your Tablet Computer and the Bluetooth device must be the same. Tap **Next** to continue.



6. Windows will check for the device driver and install, if necessary. Tap **Close** to close the screen.



Depending on the paired Bluetooth device, you may use your Tablet Computer speakers to listen to music played from the Bluetooth device, transfer files, and more.

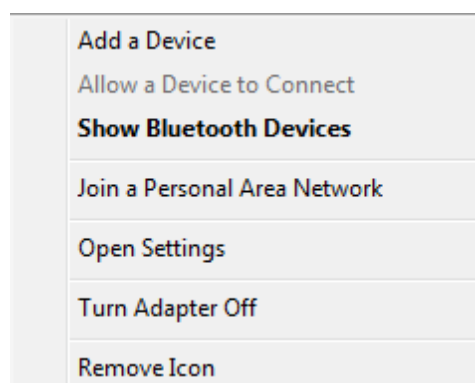
NOTE: For more information on using Bluetooth features, see Windows online help.

To reconnect to a Bluetooth device

Once a Bluetooth device has been paired with your Tablet Computer, you do not need to enter or verify the pairing code as you did the first time.

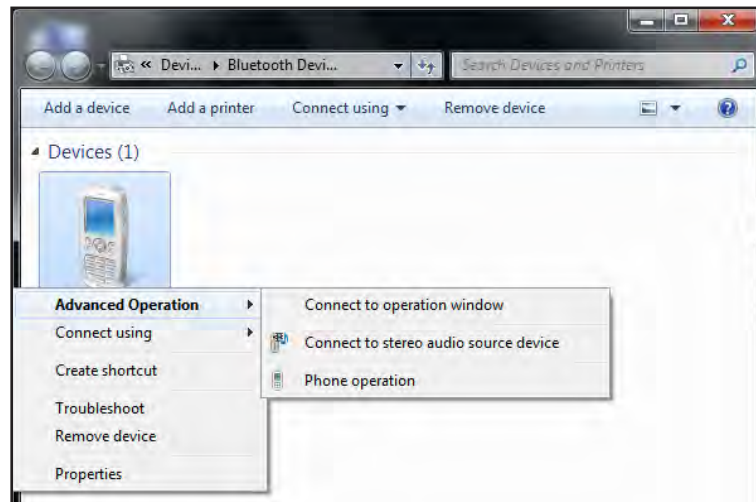
To reconnect to a Bluetooth device, perform the following:

1. Make sure the Bluetooth adapter is on as indicated by the Bluetooth icon (📶) on the taskbar.
2. Tap the Bluetooth icon (📶) to display a pop up menu.

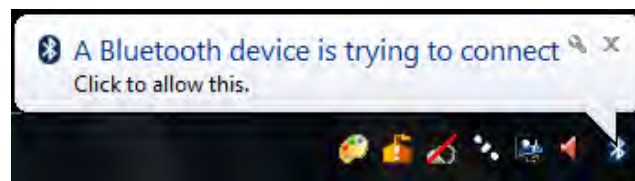


3. Tap **Show Bluetooth Devices**.

4. Tap and hold the Bluetooth device to display the pop up menu.
5. Tap **Advanced Operation**, then tap the applicable connection operation.



When a Bluetooth device wants to pair with your Tablet Computer, a pop up message appears on the taskbar, tap the message to pair with the device.



Configuring Bluetooth Settings

The Bluetooth Settings allows you to configure how you want to connect to Bluetooth devices, sync data, and other options. To access the settings, tap and hold the Bluetooth icon (📶) on the taskbar, and tap **Open Settings**.

Using 3G Network

Your Tablet Computer may have 3G network capabilities that provide wireless connection to the Internet using a SIM card with data subscription.

NOTE: The 3G network feature is an optional item.

Connecting to 3G Network

Your Tablet Computer comes with Sierra Wireless AirCard® Watcher, an application that allows you to connect to the Internet using your SIM card and keeps you informed of your wireless connection status. Perform the following to connect to your 3G network:

1. Install a SIM card to your Tablet Computer (see “Installing the SIM Card” on page 1-8).
2. Open the AirCard® Watcher application (tap **Start > All Programs > Sierra Wireless > AirCard Watcher**).

The application detects the SIM card and displays network information on the AirCard® Watcher main screen.



TIP: To open AirCard® Watcher faster, create a desktop shortcut icon or configure one of the hotkeys to open the application (see “Using the Hotkeys” on page 2-6). Alternatively, you can set AirCard® Watcher to open and connect automatically with your 3G network (see “To configure 3G network profiles” on page 2-22).








3. Tap **Connect** to connect to the 3G network.











Once connected, the AirCard® Watcher main screen displays the network connection information, such as signal strength, connection speed, and bitrate transfer. For more information on using the application, see “Using AirCard® Watcher” on page 2-19.

Using AirCard® Watcher


The AirCard® Watcher main screen

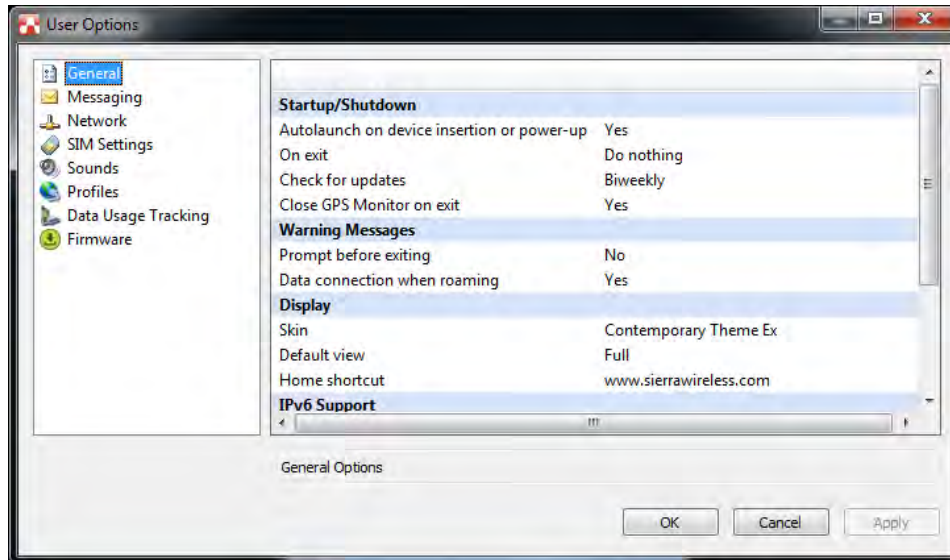


No.	Item	Description
1	 3G On/Off	<ul style="list-style-type: none"> Green: 3G network is on. Red: 3G network is off.
	 Signal Strength	<ul style="list-style-type: none"> Green: Indicates the network signal strength. More lit bars indicates stronger signal. Red: No signal.
	 Network Type	Indicates the network connection type.
2	Toolbar	Tap an icon to access the function.
	 Wireless Profile	Tap to view and modify wireless network profile.
	 SMS	Tap to open SMS Express to send and receive SMS messages on your Tablet Computer. NOTE: Your data plan subscription must support this feature to be able to send and receive SMS messages on your Tablet Computer.
	 History	Tap to view the usage history and clear the bitrate counters.
	 Airplane Mode	Tap to enable airplane mode. When this feature is enabled, the icon turns red. Tap the icon again or tap Turn Radio On to disable airplane mode.

No.	Item	Description
2	 AirCard GPS	Tap to open AirCard GPS Monitor.
	 Settings	Tap to access the AirCard® Watcher settings. See “Configuring AirCard® Watcher Settings” on page 2-21.
	 Help	Tap to view the help file.
3	Network Name	Displays the name of the SIM card network provider.
4	Data Transfer Rate	Displays the upstream and downstream transfer information.
5	 Home	Tap to open the Sierra Wireless website.
6	 Speed Graph	Tap to display a graphical table of the data transfer speed.
7	 Menu	Tap to access the application menu.
	 Minimize	Tap to minimize the application to the system tray.
	 Restore	Tap to toggle the display between full view and compact view.
	 Close	
8	Connect / Disconnect Button	Tap to connect or disconnect from the 3G network.
9	Network Info	A graphical display of the network connection type.
10	Speed	Indicates the network connection speed.
11	 Customer Support	Tap to open Sierra Wireless support website.

Configuring AirCard® Watcher Settings

On the AirCard® Watcher main screen, tap the Settings () icon to display the screen below.



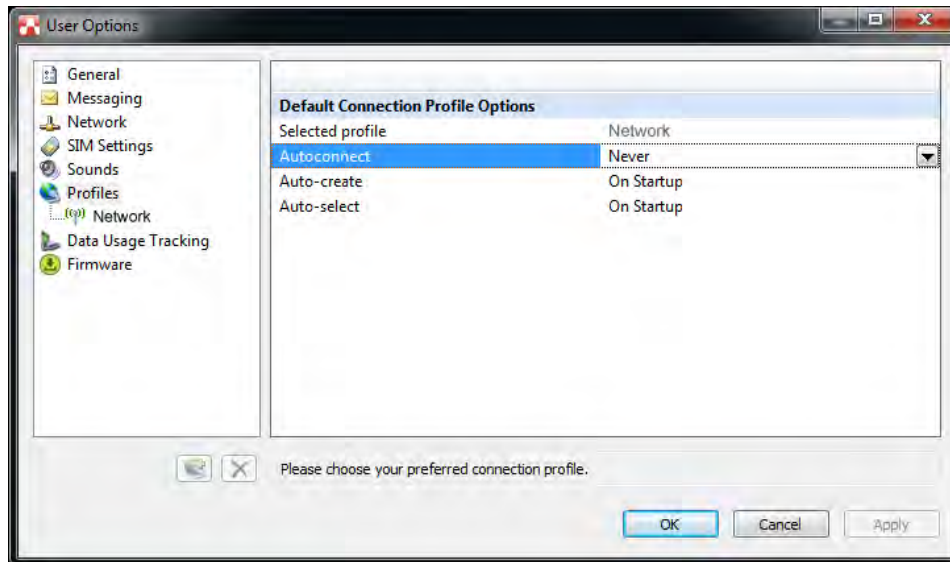
Tap a menu item on the left panel to display the corresponding settings on the right. The following menus are available:


Menu	Description
General	Configures startup/shutdown settings, warning messages, display properties, and others.
Messaging	Configures message settings such as service center number, default storage, and message notification.
Network	Configures network mode and radio technology.
SIM Settings	Enables SIM security settings.
Sounds	Enables sound alert when network is connected, disconnected or when a new message is received.
Profiles	Configures network profiles and auto-connect functions. See “To configure 3G network profiles” on page 2-22.
Data Usage Tracking	Enables data usage tracking and configures data subscription rate plan settings. This feature is useful when you have limited data rate plan to help you monitor and control your Internet usage.
Firmware	Displays firmware information.

To configure 3G network profiles

Once a SIM card is used in your Tablet Computer, its network profile is created. You can view network information, such as profile name, access point name (APN), TCP/IP settings, and more. You can also set AirCard® Watcher to automatically connect to the 3G network at startup.

1. On the AirCard® Watcher main screen, tap the Wireless Profile (📶) icon.



NOTE: Alternatively, you can also access the Profiles menu, by tapping , and then **Profiles** on the left panel.

2. On the **Profiles** menu, the following items are displayed:
 - **Selected profile:** Displays the name of your 3G network.
 - **Autoconnect:** Tap the field and then select one of the following:
 - **Never:** Do not auto-connect to network.
 - **While not roaming:** Automatically connects to network while within the local network coverage.
 - **Always (even when roaming):** Automatically connects to network even when roaming outside the local network coverage.

NOTE: Connecting to your network while roaming may incur additional charges. Check with your service provider for details.

- **Auto-create:** Tap to automatically create a connection profile when using a new SIM card.
 - **Auto-select:** Tap to automatically select the best connection profile for the current SIM.
3. Tap **Apply** to save the settings.

4. To view the SIM card information, tap the network name on the left panel.
5. Tap **OK** to close the screen.

Using GPS

Your Tablet Computer has a GPS (Global Positioning System) receiver module built in and includes the **Trimble GPS Information** software.

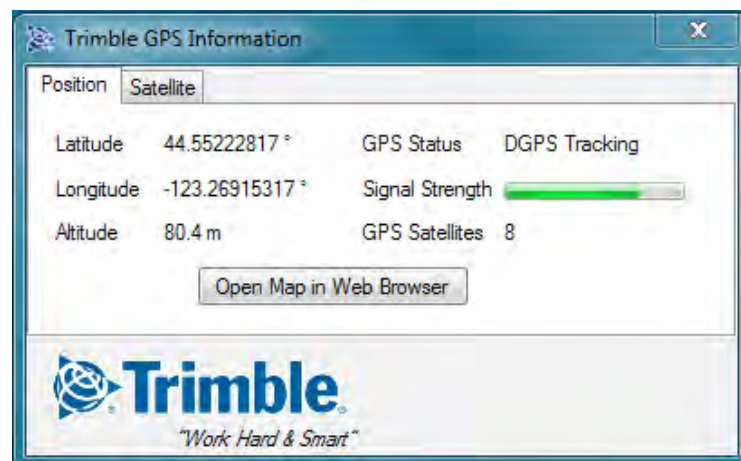
Trimble GPS Information is an application that allows you to manage the following:

- Position
- Satellites

To open **Trimble GPS Information**, tap **Start > All Programs > Trimble > Trimble GPS Information**.

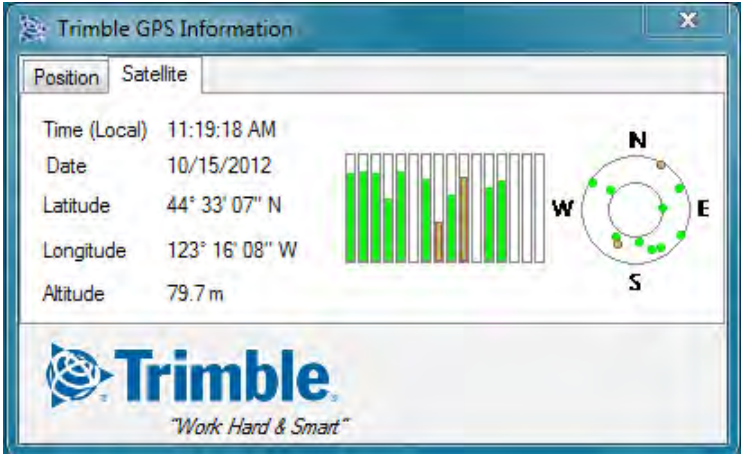
Position

The Position tab provides an overview of your location and system status. Click the **Open Map in Web Browser** button to view your location on the map.



Satellites

The Satellites tab displays the coordinates of your location as viewed from the satellites, including the date and time and satellite altitude.



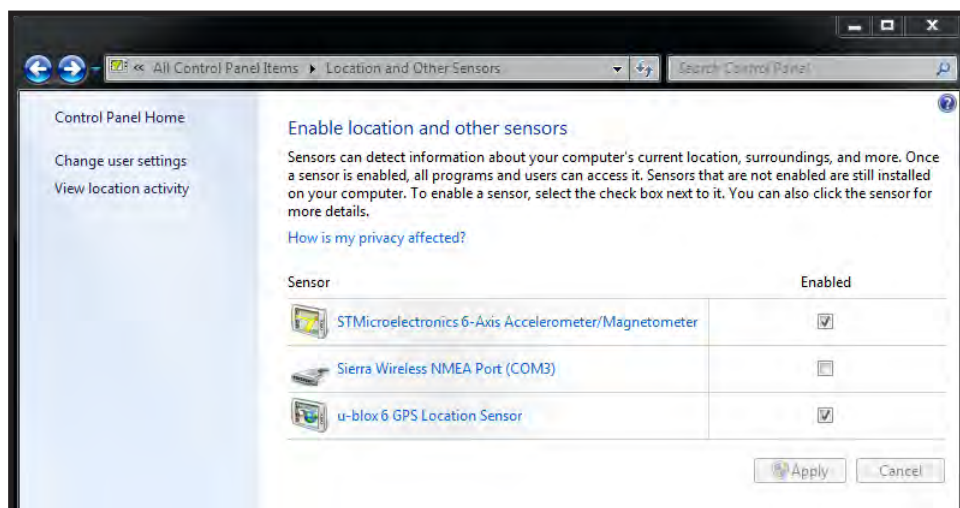
Using the Accelerometer / Compass

Your Tablet Computer has a built in accelerometer sensor and comes with a compass application. The accelerometer detects your location, surroundings, and more. You can use the compass application to point the direction to where you are heading.

Activating the Accelerometer

By default, the accelerometer is enabled on your Tablet Computer. However, if you need to disable and re-enable this feature again, perform the following:

1. Tap **Start > Control Panel > Location and Other Sensors**.



2. On the **STMicroelectronics 6-Axis, Accelerometer/Magnetometer Enabled** box, tap to enable or disable this feature.
3. Tap the **Apply** button to save changes.

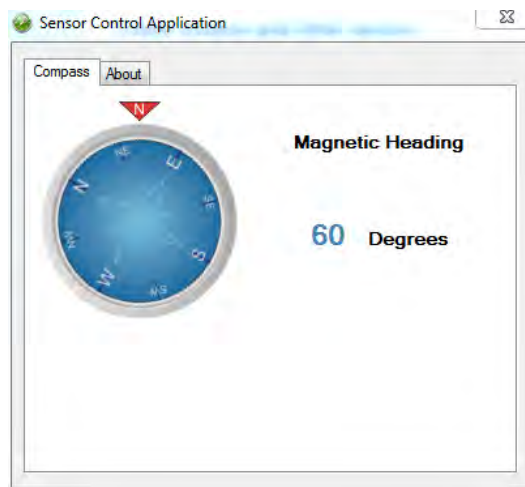
Using the Compass

The **Sensor Control Application** is a compass application that points the direction to where you are heading just like a mechanical compass does.

To open the compass application, tap **Start > All Programs > STMicroelectronics > Sensor Control Application**.

To use the compass

Hold the Tablet Computer with both hands in front of you. Face the direction to where you are heading. The screen displays your direction.



To recalibrate the compass

Rotate and then turn the Tablet Computer to recalibrate the compass.

Using the Camera

Your Tablet Computer has a built-in camera for taking photos and videos. Photos can be captured with GPS location data.



Opening the Camera





1. Tap **Start > All Programs > Trimble > Camera > Camera**. The camera screen appears.
2. Tap the screen to show the camera control buttons.

The Camera Screen


The camera has two capture modes: Photo mode and Video mode. By default, the camera opens to Photo mode. Below is the Photo mode camera screen, similar screen appears in Video mode.



No.	Item	Description
1	Preview Thumbnail	<ul style="list-style-type: none"> • Displays the thumbnail of the last captured photo or video. • Tap to open the captured photo or video file for viewing.
2	Change Mode Icon	Toggles between video and photo modes.
	 Video mode	Tap to change to video mode.
	 Photo mode	Tap to change to photo mode.

No.	Item	Description
3	Camera Screen	Shows the object to capture.
4	 Shutter Button	<ul style="list-style-type: none"> Indicates the camera is in photo mode. Tap the shutter button to capture a photo.
	 Record Button	<ul style="list-style-type: none"> Indicates the camera is in video mode. Tap the record button to record a video.
5	Date Stamp	Indicates date stamping is included when capturing photos. NOTE: Available only in Photo mode.
6	Resolution	<ul style="list-style-type: none"> Indicates the current camera resolution. Tap repeatedly to change to a different resolution setting.
7	 Close Button	Tap to close the camera.
8	GPS Tag	Indicates GPS tagging is included when capturing photos. NOTE: Available only in Photo mode.
9	 Menu Button	Tap to display the camera menu.

Shooting Photos

1. Open the camera.
2. Focus on your subject.
3. Tap  to capture the photo.

To change the photo resolution

- To change the photo resolution, repeatedly tap the resolution on the upper-right corner of the screen. The available options vary depending on the current aspect ratio setting. See “To set the aspect ratio and resolution” on page 2-34.


To switch to Video mode

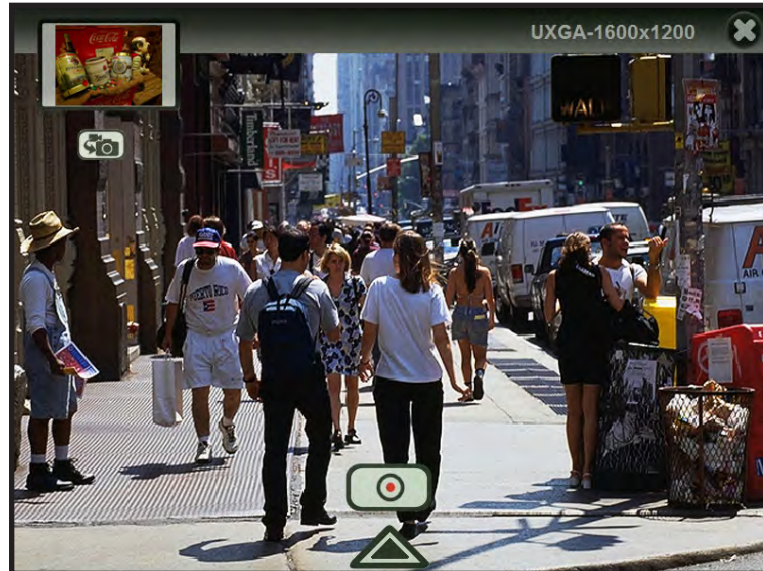
- To switch to Video mode, tap .


To configure photo settings

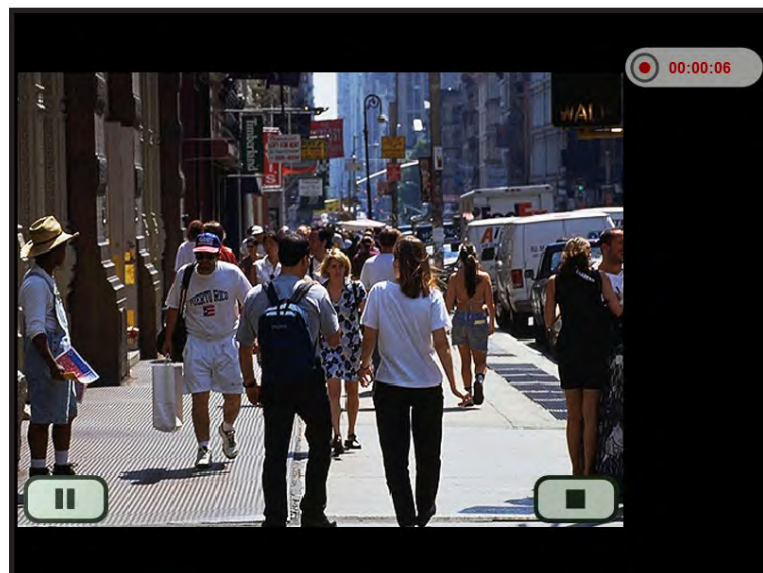
- To configure the photo settings, tap . See “Working With Photos” on page 2-32 for more information.

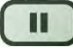


Recording Videos

1. Open the camera.
2. Tap  to change to Video mode.



3. Focus on your subject.
4. Tap  to start the recording. The recording screen appears.



5. To pause the recording, tap . Then tap  to resume the recording.
6. When done, tap  to stop the recording.

To change the video resolution

- To change the video resolution, tap the resolution on the upper-right corner of the screen to toggle the settings:



To switch to Photo mode

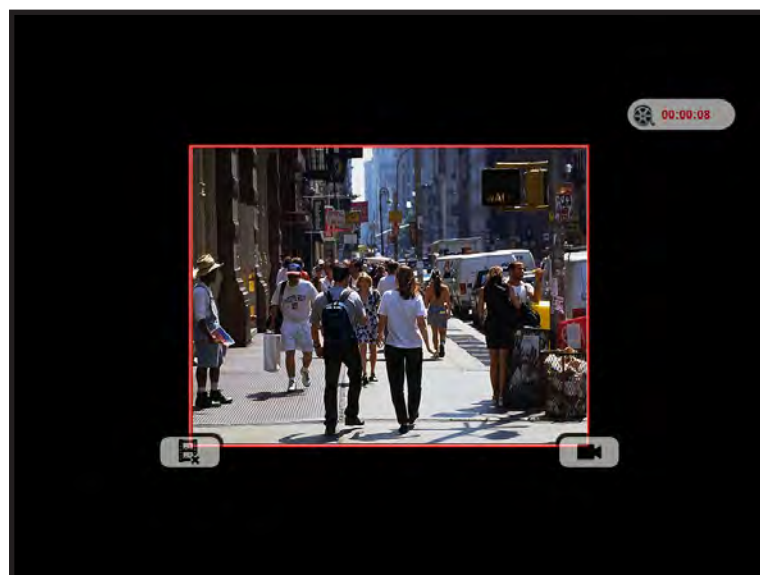
- To switch to Photo mode, tap .


To configure video settings

- To configure the video settings, tap . See “Working with Videos” on page 2-38 for more information.

Playing Videos

When Video Review is enabled in video settings, the video is automatically previewed after the recording stops.



- To delete the recording, tap .
- To save the recording and close the video review, tap .