

**EAR FORCE®**  
**X12**

## Quick Start Guide

For the full user guide, please go to [www.turtlebeach.com/products/X12](http://www.turtlebeach.com/products/X12)



Watch Turtle Beach product training videos at:  
[Youtube.com/TurtleBeachVideos](http://Youtube.com/TurtleBeachVideos)



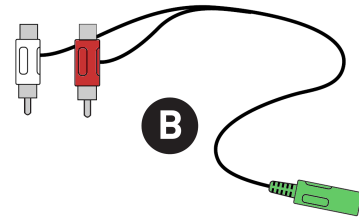
Product support and warranty  
information:  
[TurtleBeach.com/support](http://TurtleBeach.com/support)

### Package Contents



**A**

Ear Force X12 Headset with In-line Amplifier



**B**

RCA Splitter Cable



**C**

Xbox 360® Talkback Cable\*



**D**

User Guide

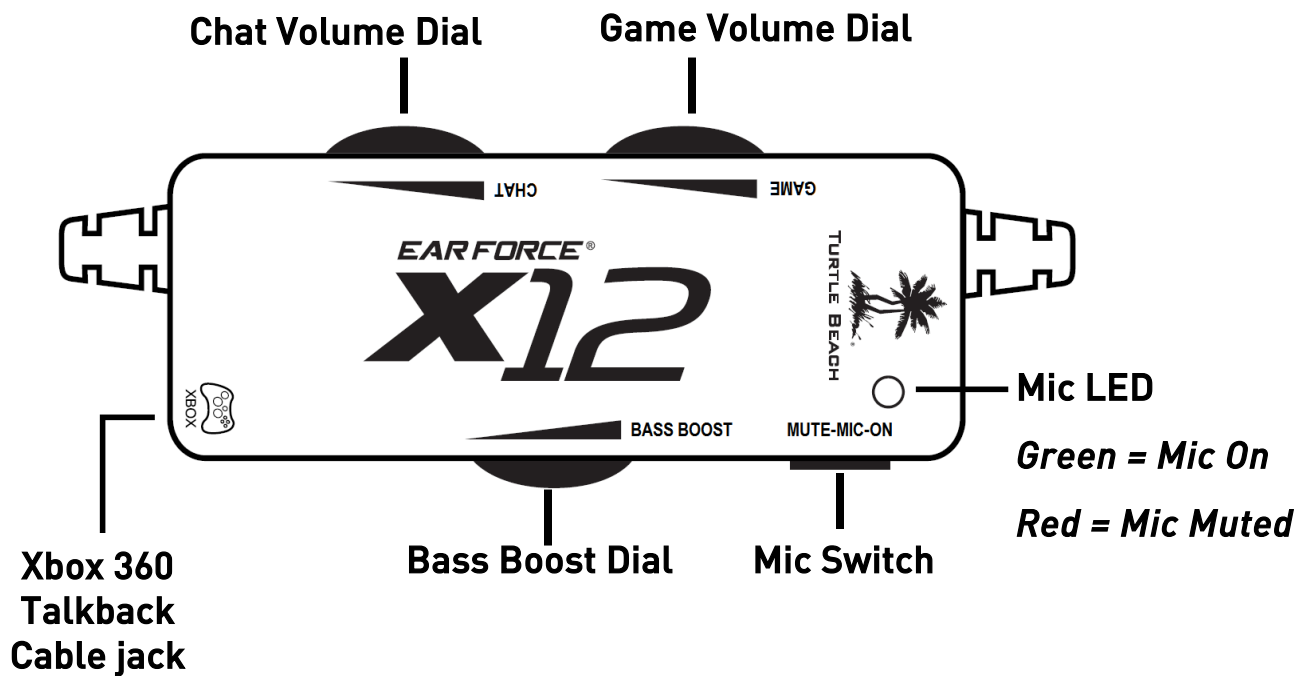


**E**

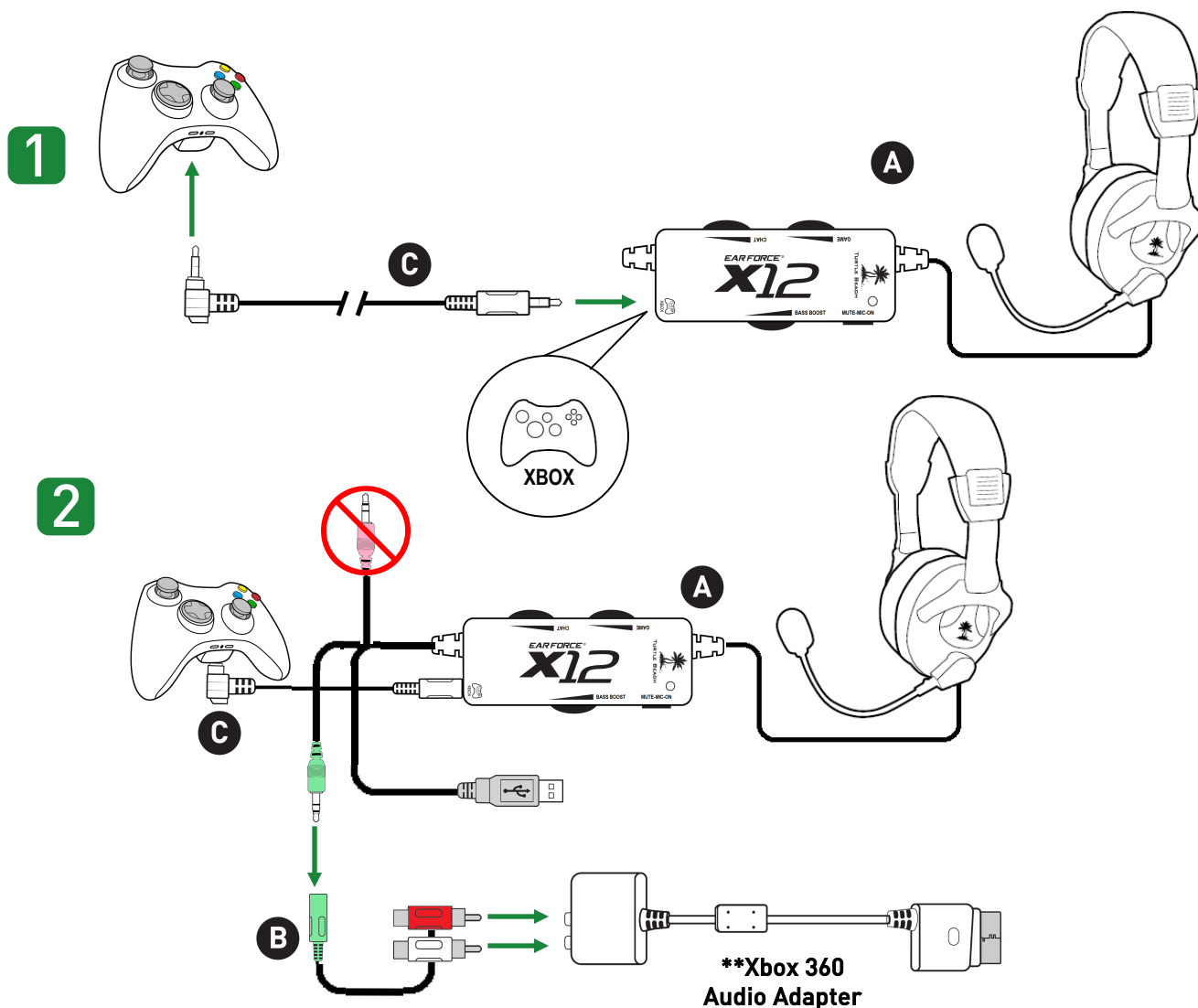
Turtle Beach Sticker

\* For best Xbox LIVE chat performance, use with official Microsoft Xbox 360 products.

# Headset/Amplifier Controls



# Xbox 360 Setup – HDMI

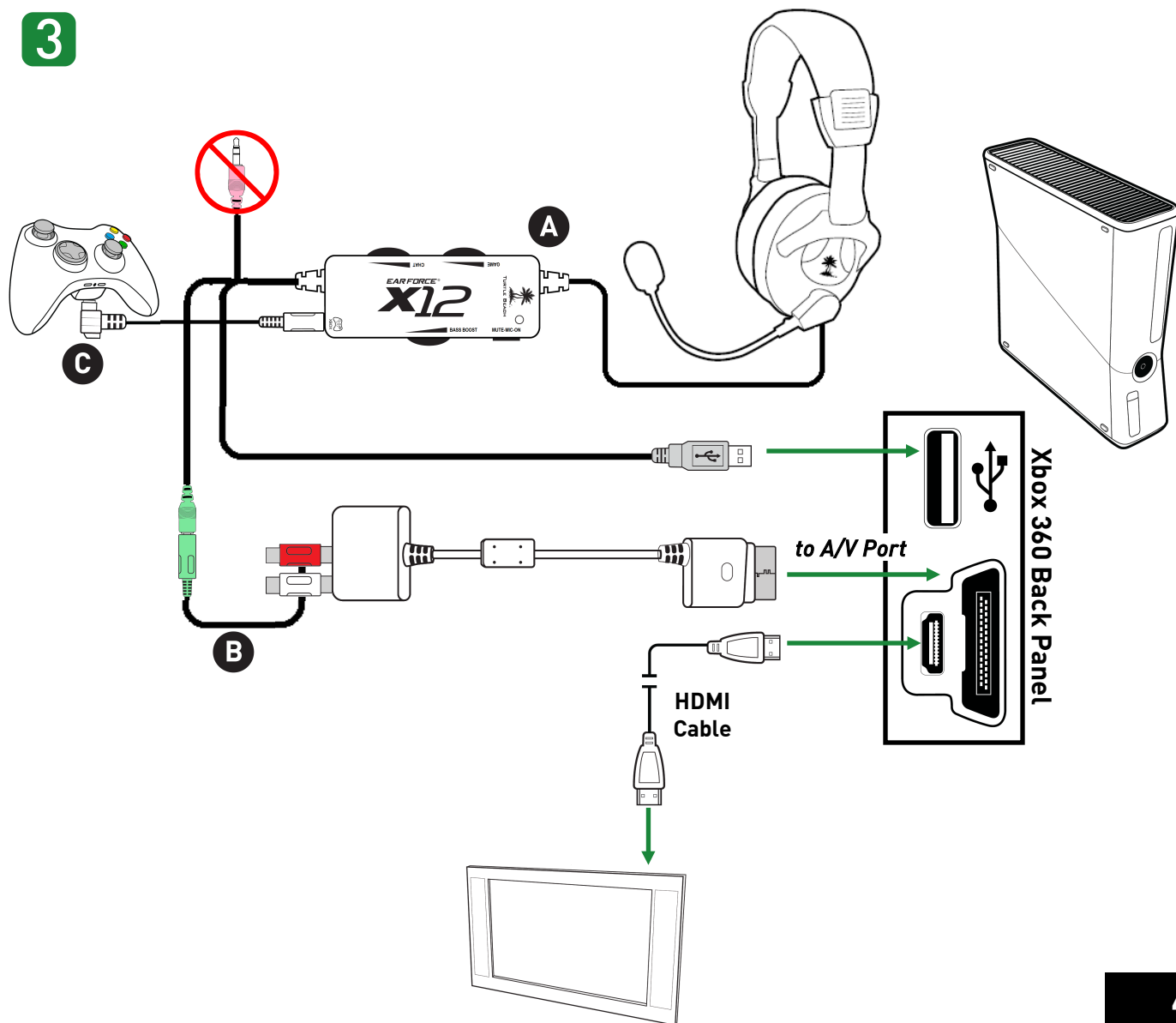


\* An **Xbox 360 Audio Adapter** (available on [TurtleBeach.com](http://TurtleBeach.com)) is required only if your TV does not have red/white AUDIO OUT RCA jacks, and if you are using an HDMI cable to connect your game console to your TV.

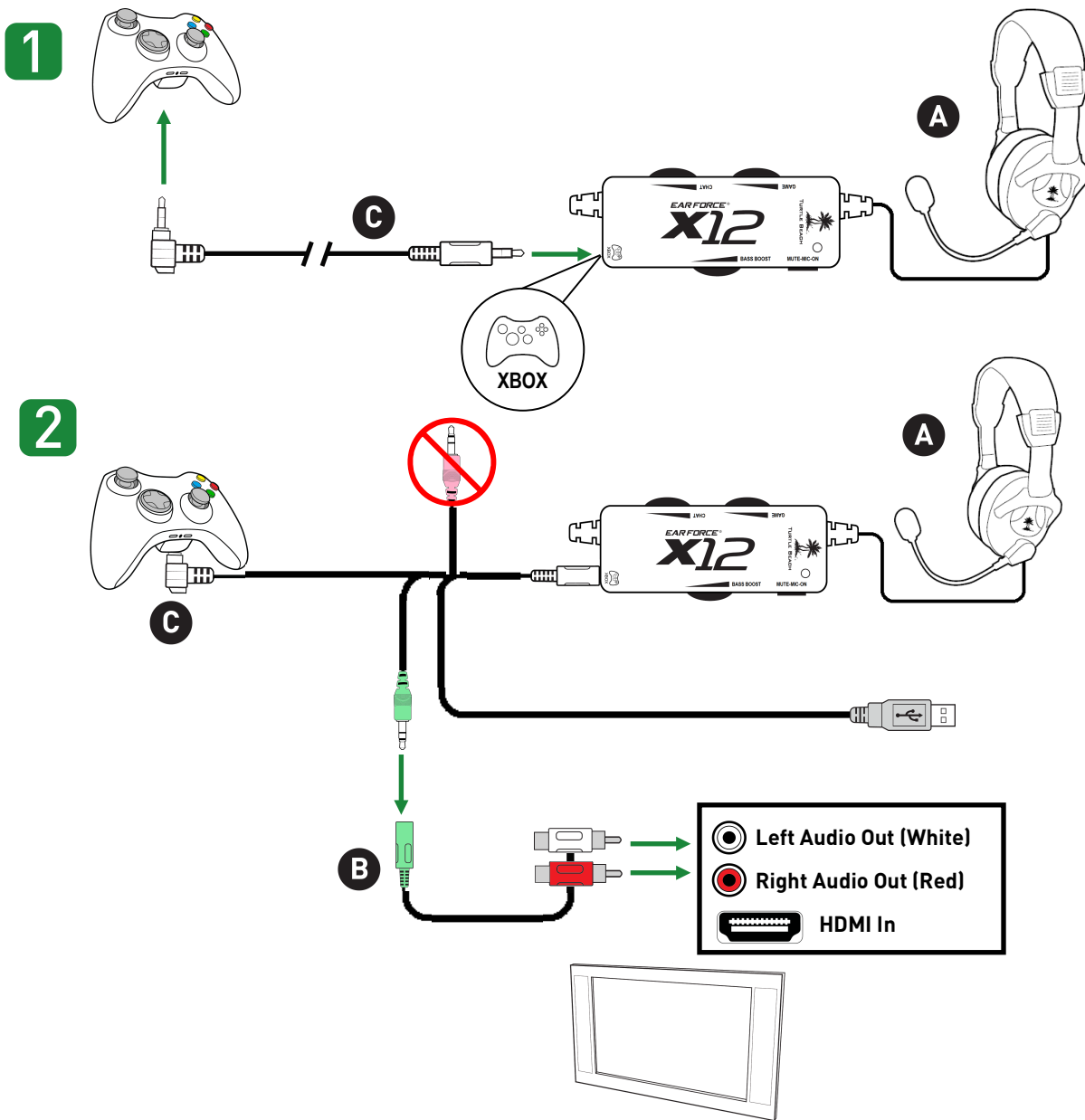
**NOTE:** AUDIO IN jacks will not send sound out to your headset; you need AUDIO OUT.

## Xbox 360 Setup – HDMI (Continued)

3

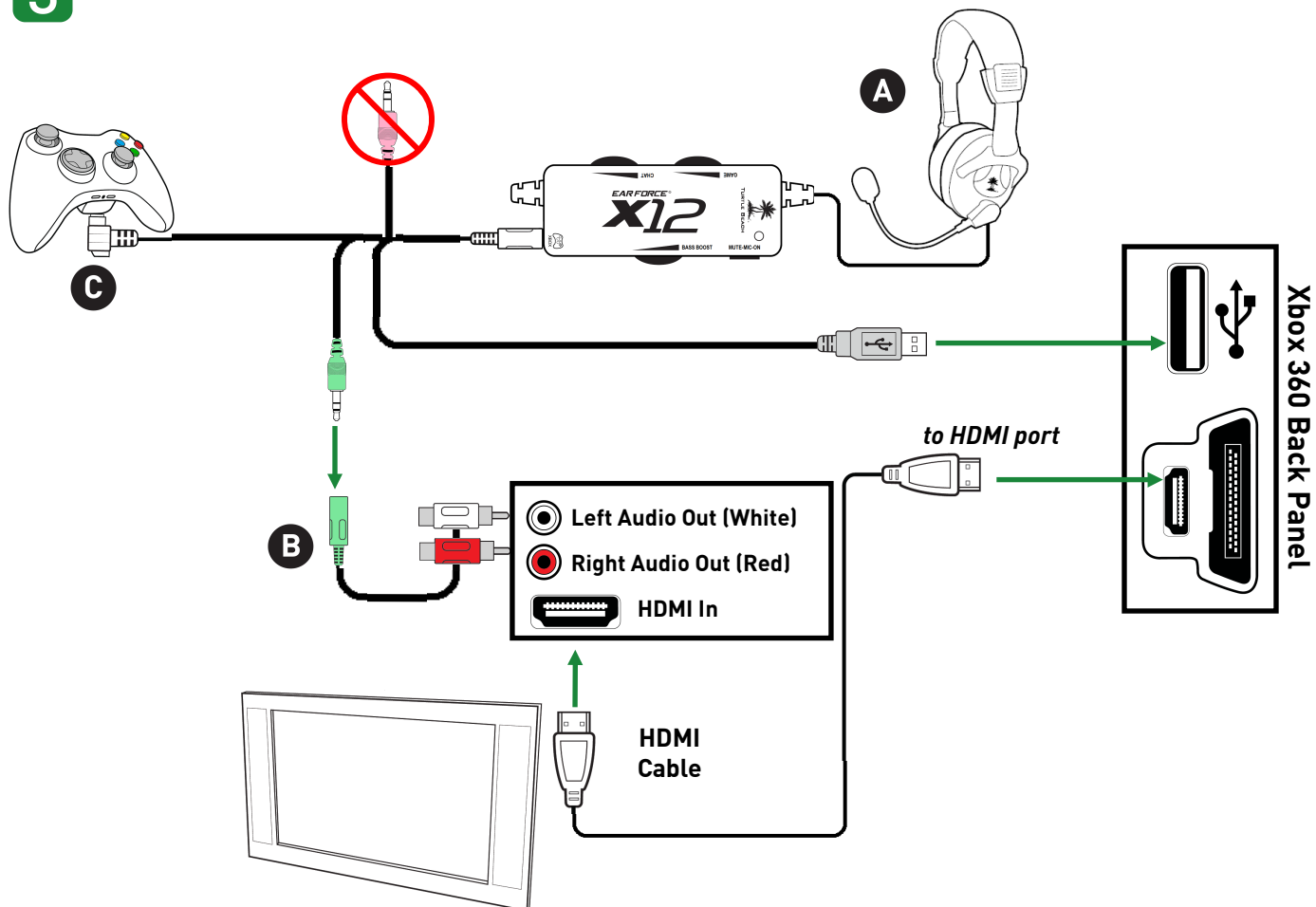


# Xbox 360 Setup – HDMI Alternate

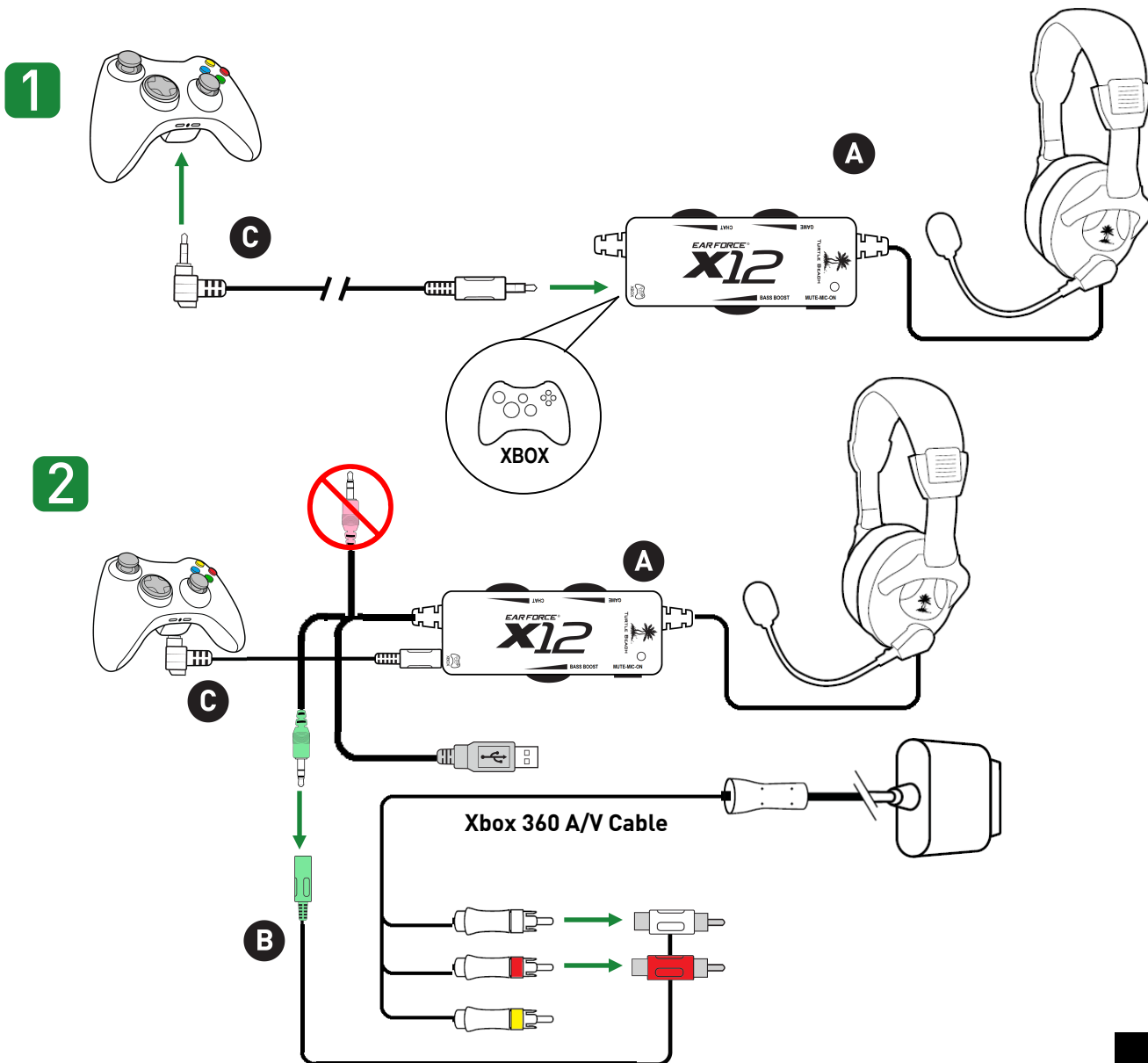


## Xbox 360 Setup – HDMI Alternate (Continued)

3

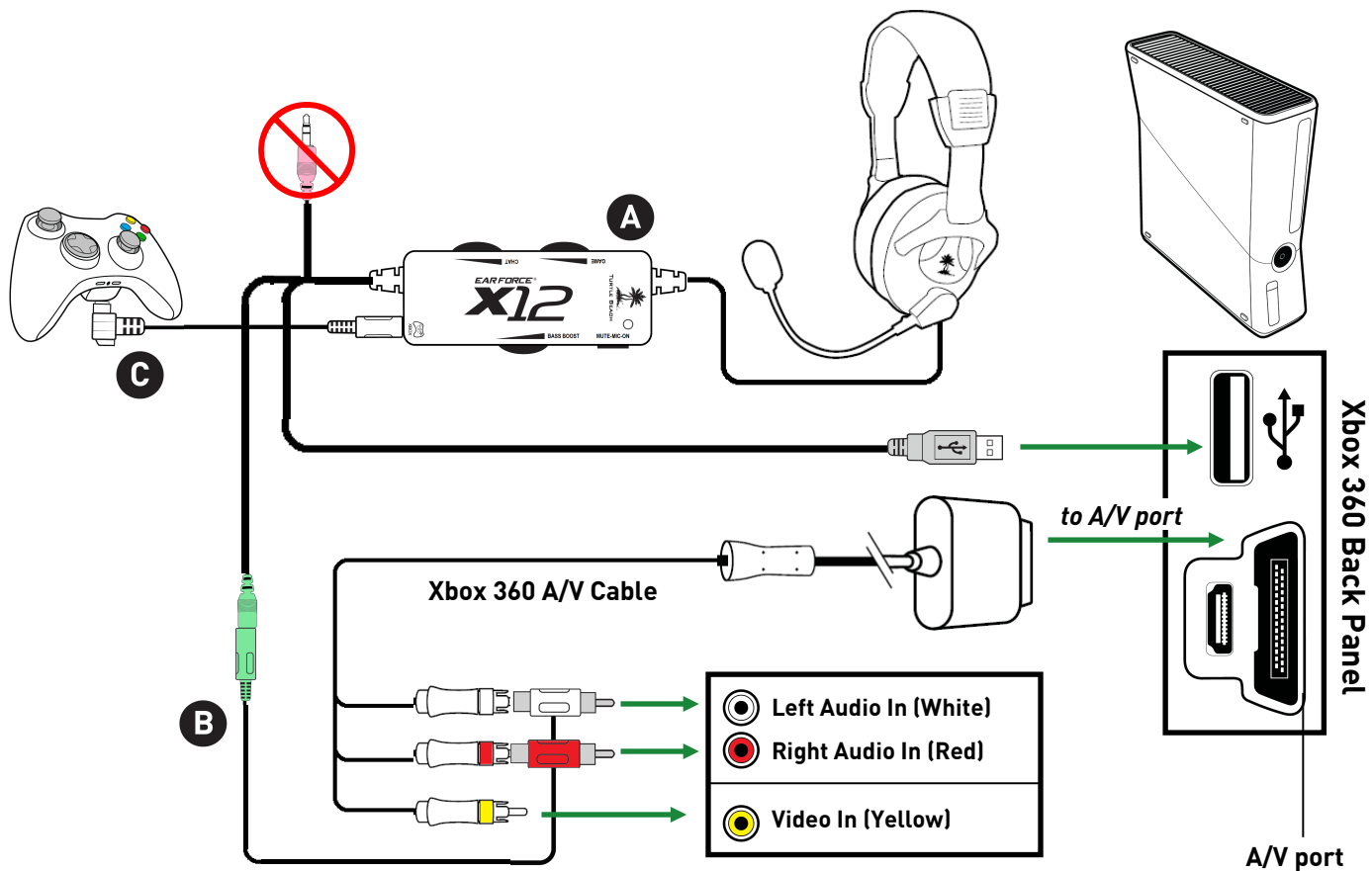


# Xbox 360 Setup – RCA



## Xbox 360 Setup – RCA (Continued)

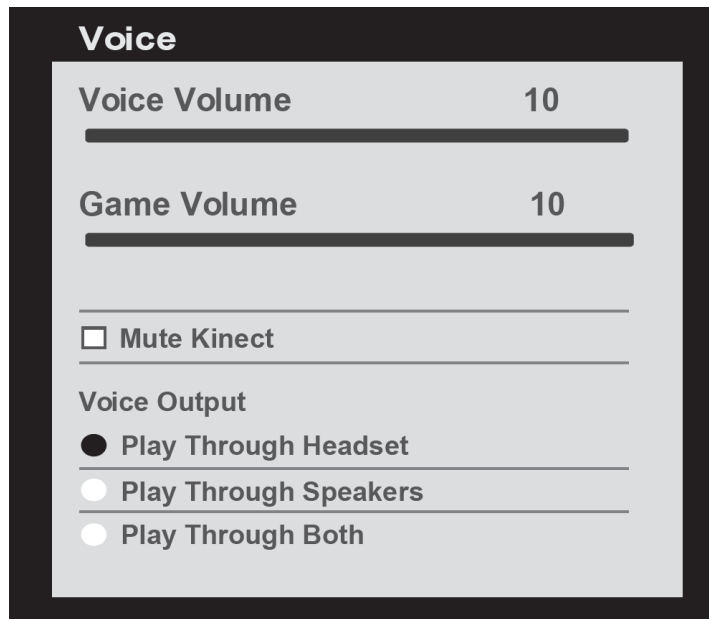
3



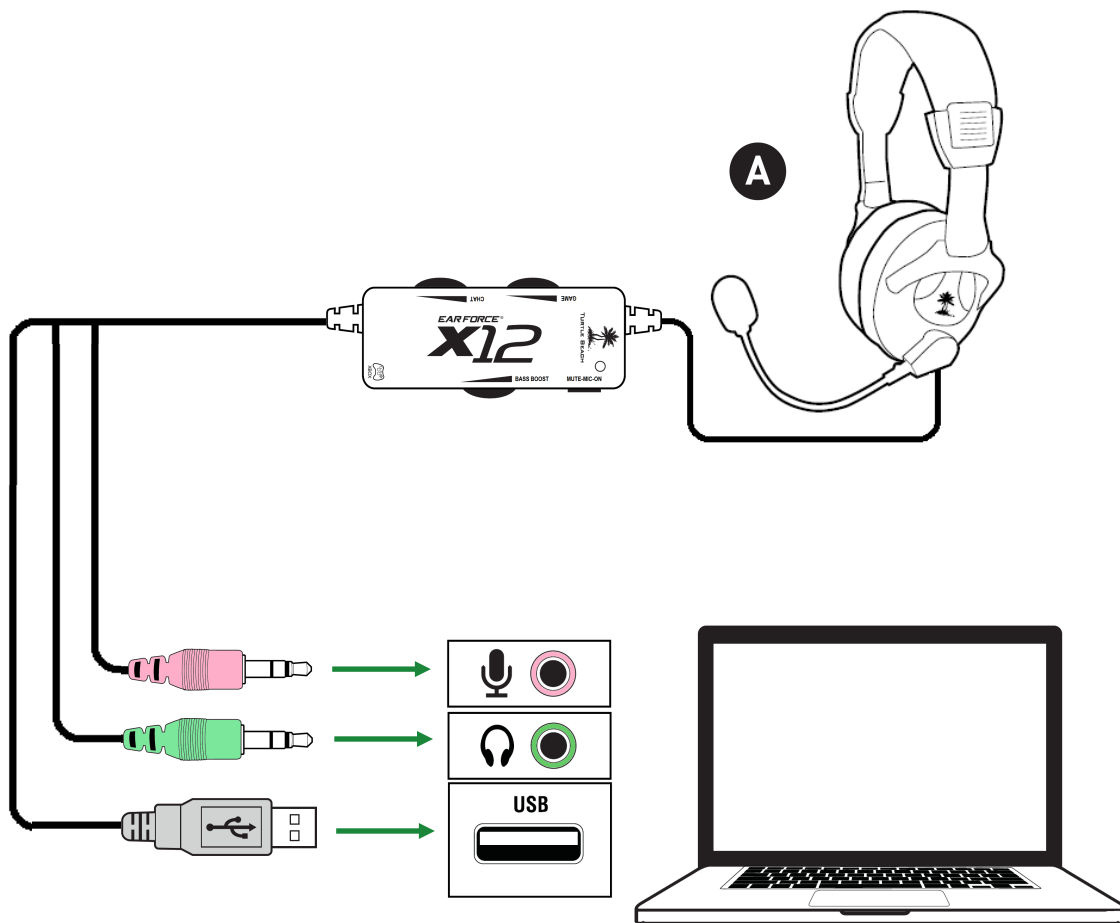


# Xbox 360 Chat Configuration

- 1 Press the silver Xbox Guide button on your Xbox 360 controller. Go to **Settings > Preferences > Voice**.
- 2 • Set **Voice Volume** to “10”
- 3 • Set **Game Volume** to “10”
- 4 • Set **Voice Output** to “Play Through Headset”

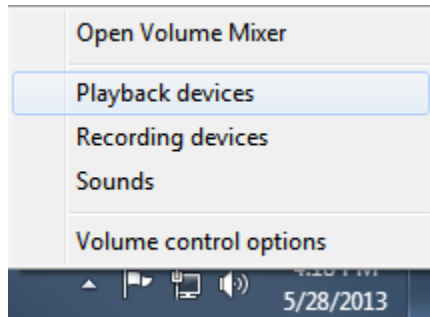


# PC Connections

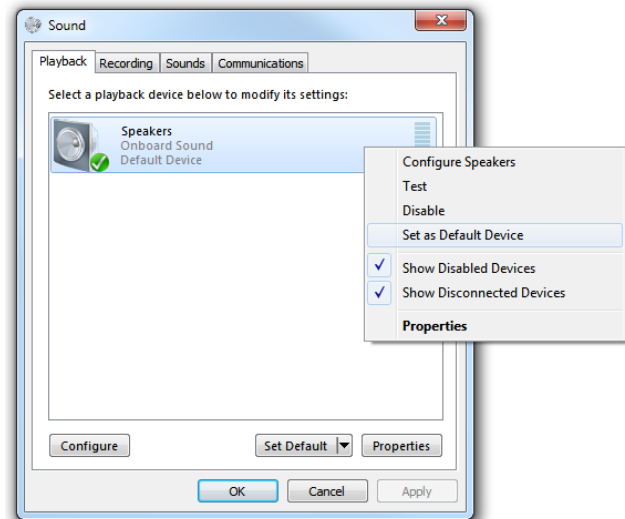


# PC Setup

- 1 Right-click the Speaker icon in your task bar and select **“Playback devices”**.



- 2 Right-click **“SPEAKERS”** and select **“Set as Default Device”**.



- 3 Click the **“Recording”** tab, then right-click **“Microphone”** and select **“Set as Default Device”**.

If you speak into the mic, you should see the green bars on the right move.

- 4 Click the **“OK”** button at the bottom of the window to exit.

