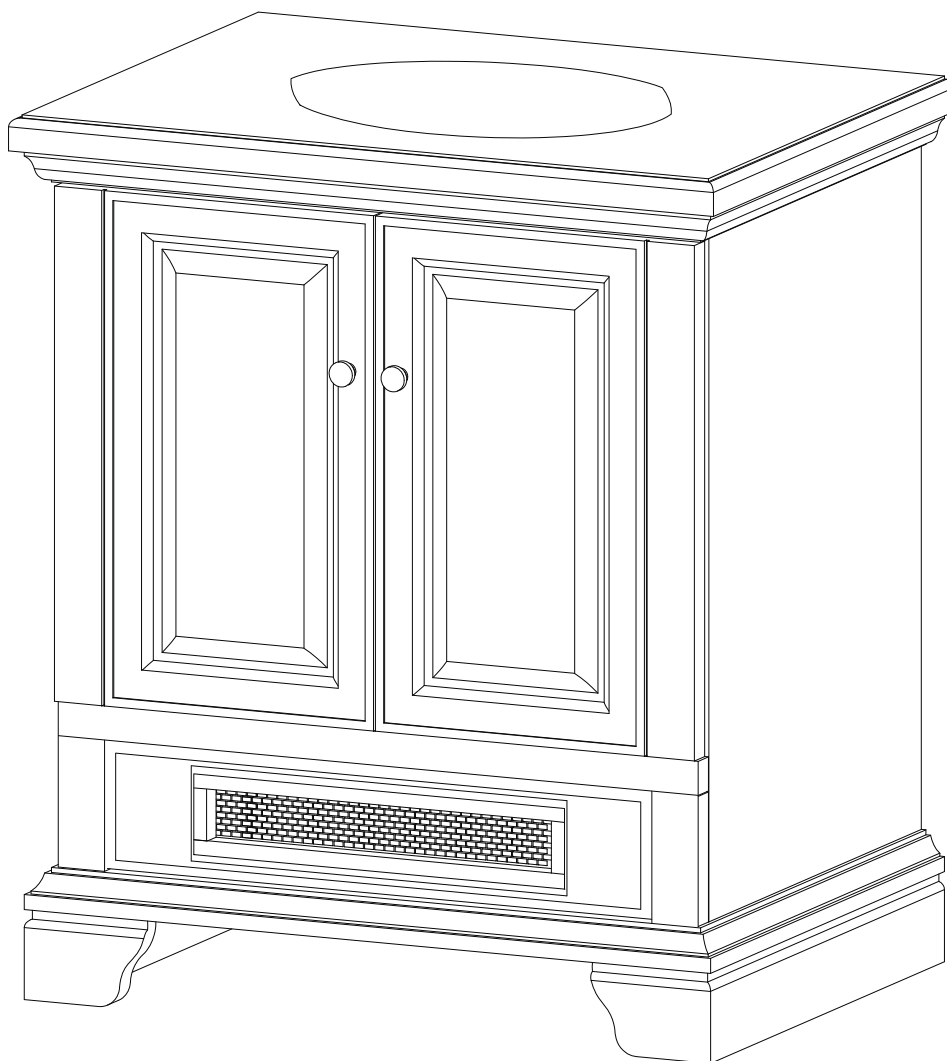


# BATH VANITY WITH HEATER INSTRUCTION MANUAL

MODEL # 15II500ARA

**IMPORTANT:  
RETAIN FOR FUTURE REFERENCE  
READ CAREFULLY**



## Questions, problems, missing parts?

Twin-Star International, Inc.  
Delray Beach, FL 33445  
Made in China  
Printed in China  
©2012, Twin-Star International, Inc.

V020917

## For Customer Service:

[www.twinstarhome.com](http://www.twinstarhome.com)

866-661-1218



8:30 a.m. - 5:30 p.m., EST, Monday-Friday

# IMPORTANT INSTRUCTIONS

---

Please read and understand this entire manual before attempting to assemble, operate or install the product. If you have any questions regarding the product or assembly, please call customer service at 1-866-661-1218, 8:30 a.m.-5:30 p.m., EST, Monday-Friday.

When using electrical appliances always follow basic precautions to reduce the risk of fire, electrical shock, and injury to persons including the following:

1. Read all instructions before using this appliance.
  2. This appliance is hot when in use. To avoid burns do not touch hot surfaces with bare skin. Keep combustible materials such as furniture, pillows, bedding, papers, clothes and curtains at least 3 ft / 0.9 m from the front of this appliance.
-  **WARNING:** In order to avoid overheating do not cover the heater.
-  **WARNING:** Use extreme caution when operating heater near children and the invalid.
3. The appliance is not to be used by children or persons with reduced physical, sensory or mental capabilities, or lack of experience and knowledge unless they have been given instruction or are being supervised.
  4. This appliance is not a toy. Supervise children when they are close to heater.
  5. If possible, always unplug this appliance when not in use.
  6. Do not operate any heater with a damaged cord or plug, after the appliance malfunctions, or if it has been dropped or damaged in any manner.
  7. If the supply cord is damaged it must be replaced by the manufacturer, it's service agent or similarly qualified persons in order to avoid a hazard.
  8. Only a qualified service person should repair this product.
  9. Under no circumstances should this heater be modified. Parts having to be removed for servicing must be replaced prior to operating this heater again.
  10. Do not use outdoors.
  11. Do not run cord under carpeting. Do not cover cord with throw rugs, runners or the like. Arrange cord away from traffic areas and where it will not be tripped over.
  12. To disconnect this appliance turn controls to the off position and then remove plug from outlet.
  13. Connect to properly grounded outlets only.
  14. This appliance must be electrically grounded in accordance with local codes or, in the absence of local codes, with the current CSA C22.1 Canadian Electrical Code or for U.S.A. installations, follow local codes and the National Electrical Code, ANSI/NFPA NO.70.
  15. The heater must not be located immediately below a socket-outlet.
  16. Do not insert or allow foreign objects to enter any ventilation or exhaust opening as this may cause an electric shock, fire, or damage to the appliance.
  17. To prevent a possible fire do not block air intakes or exhaust in any manner. Do not use on soft surfaces, like a bed, where opening may become blocked.
  18. This appliance has hot and arcing or sparking parts inside. Do not use in areas where gasoline, paint or flammable liquids are used or stored. This heater should not be used as a drying rack for clothing. Do not hang Christmas stockings or other decorations on or near this product.
  19. Use this appliance only as described in the manual. Any other use not recommended by the manufacturer may cause fire, electric shock or injury to persons.
  20. There is a thermostat limiter inside the heater. When inner temperature is overheating or abnormal heating occurs the thermostat protective device will cut off the power supply to avoid damage to the fireplace or risk of fire.

# IMPORTANT INSTRUCTIONS

21. Always plug heater directly into a wall outlet/receptacle. Never use with an extension cord or relocatable power tap (outlet/power strip).
22. Reference Fig. 1 for grounding instructions. This heater is for use on 120 volts. The cord has a plug as shown in Fig. 1A. An adapter as shown in Fig. 1C is available for connecting three-blade grounding type plugs to two-slot receptacles. The grounding pin extending from the adapter must be connected to a permanent ground such as a properly grounded outlet box. The adapter should not be used if a three-slot grounded receptacle is available.

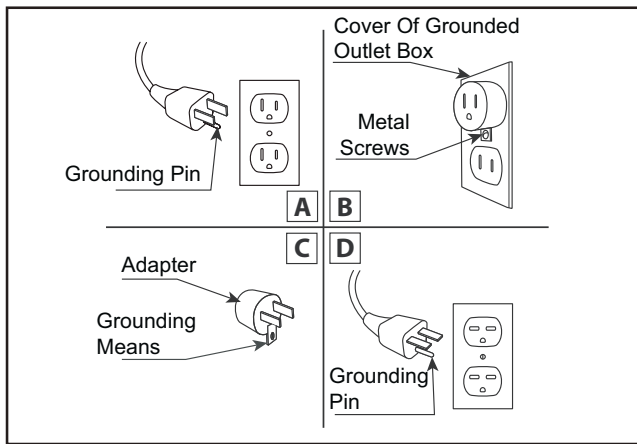


Fig. 1

**SAVE THESE  
INSTRUCTIONS**

For product warranty registration please visit:  
**[www.twinstarhome.com/registration](http://www.twinstarhome.com/registration)**

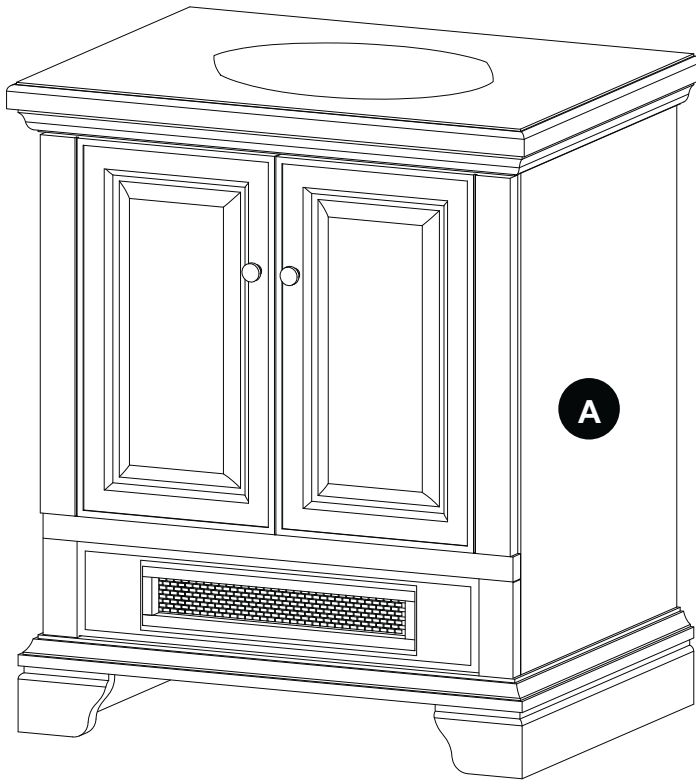
Before setting up this product please record the model number and serial number of this product in the spaces below for registration and warranty reference.

**Heater Model Number**

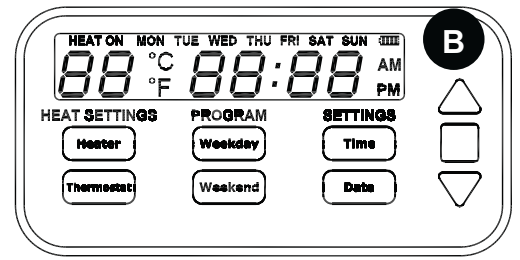
**Serial Number**

**PACKAGE CONTENTS**

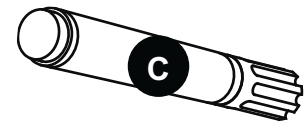
**Fig. 2**



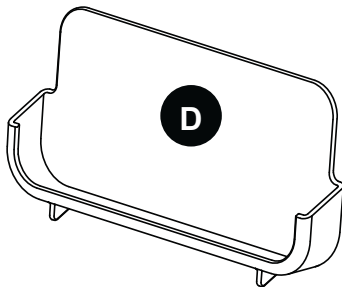
Bath Vanity with Heater



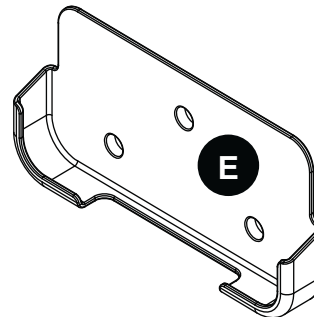
Remote Control



Touch-up Pen



Counter-top Remote Stand



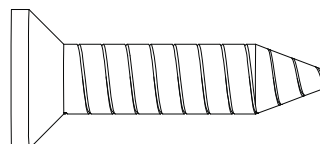
Wall Mounted Remote Holder

Part	Description	Quantity
A	Bath Vanity with Heater	1
B	Remote Control	1
C	Touch-up Pen	1
D	Counter-top Remote Stand	1
E	Wall Mounted Remote Holder	1

**HARDWARE CONTENTS**

**AA**

Screw  
0.2 in. x 1.5 in.



x 3

## HEATER LOCATION

When choosing a location for your new heater be sure that the general instructions are followed. Also, for best effect, install the heater out of direct sunlight.

## ELECTRICAL CONNECTION

A 15 AMP, 120 Volt, 60 Hz circuit with a properly grounded outlet is required. Preferably, the heater will be on a dedicated circuit as other appliances on the same circuit may cause the circuit breaker to trip or the fuse to blow when the heater is in operation. The unit comes standard with 6 feet (1.8 m) three wire cord, exiting from the rear of the heater.

**CAUTION:** Do not exceed the current rating of the current tap. Always plug heaters directly into a wall outlet/ receptacle. Never use with an extension cord or relocatable power tap (outlet/power strip).

## ELECTICAL SPECIFICATIONS (15II500ARA)

Voltage	120 V~, 60 Hz
Amps	12.5 Amps
Watts	1500 Watts

## CLEARANCE TO COMBUSTIBLES

Keep electrical cords, drapery, furniture and other combustibles at least 3 feet (0.9 m) from the front and sides of the heater.

## CLEANING TRIM

Clean the trim using a soft cloth, slightly dampened with citrus oil based product and buff with a clean soft cloth. **DO NOT** use brass polish or household cleaners as these products will damage the metal trim. Citrus oil based products can be obtained at supermarkets or hardware stores.

## HEATER PLUG & MAIN POWER SWITCH

The heater is equipped with a ground fault circuit indicator plug. Plug the heater directly into a standard 120V outlet; the light will indicate correct function.

1. Press the TEST button, if the indicator light goes out function is correct.
2. Press the RESET button, if the indicator becomes re-lit function is normal.
3. The Heater has a main power switch on the back of the heater enclosure. Ensure that the main power switch is in on the ON position as shown in Fig. 4.

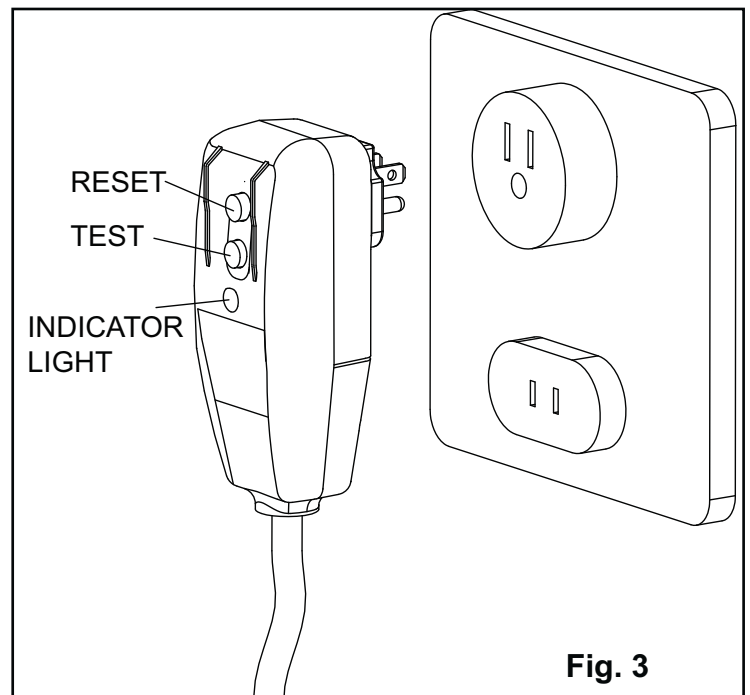


Fig. 3

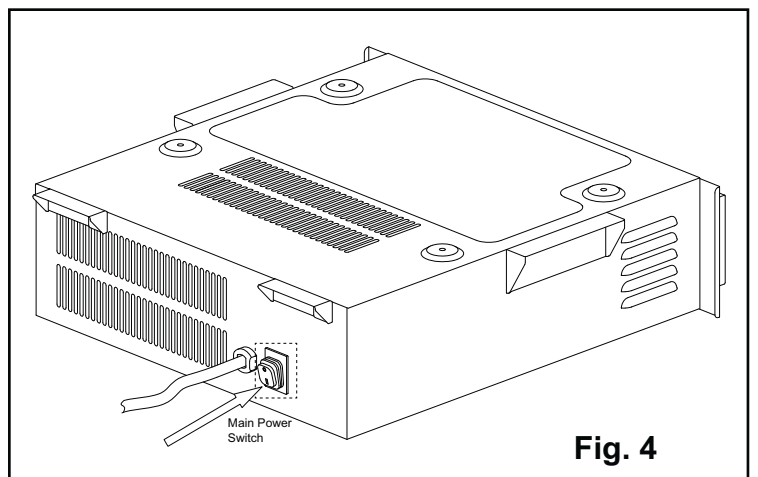


Fig. 4

# Remote Control Installation

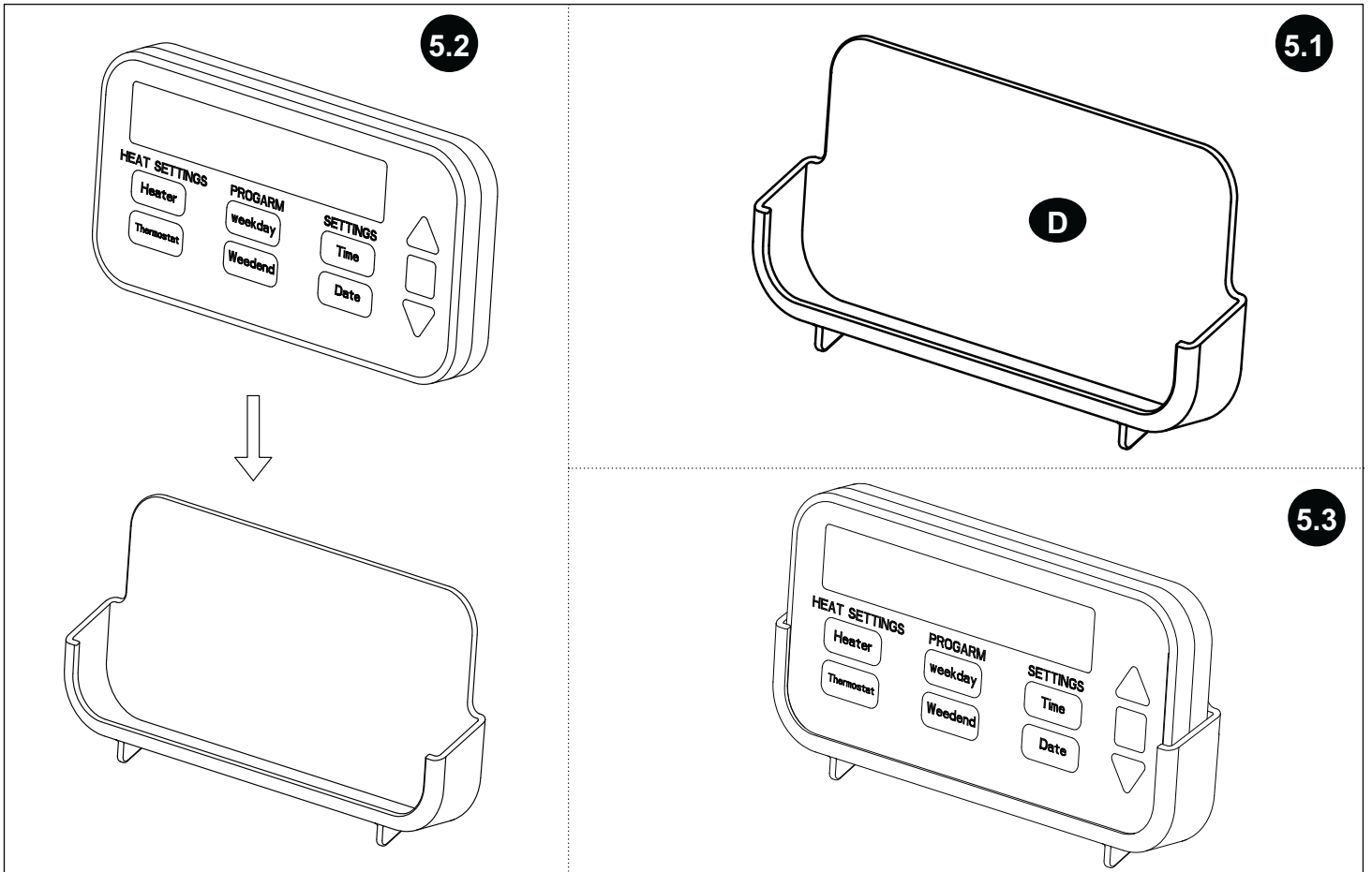


Fig. 5

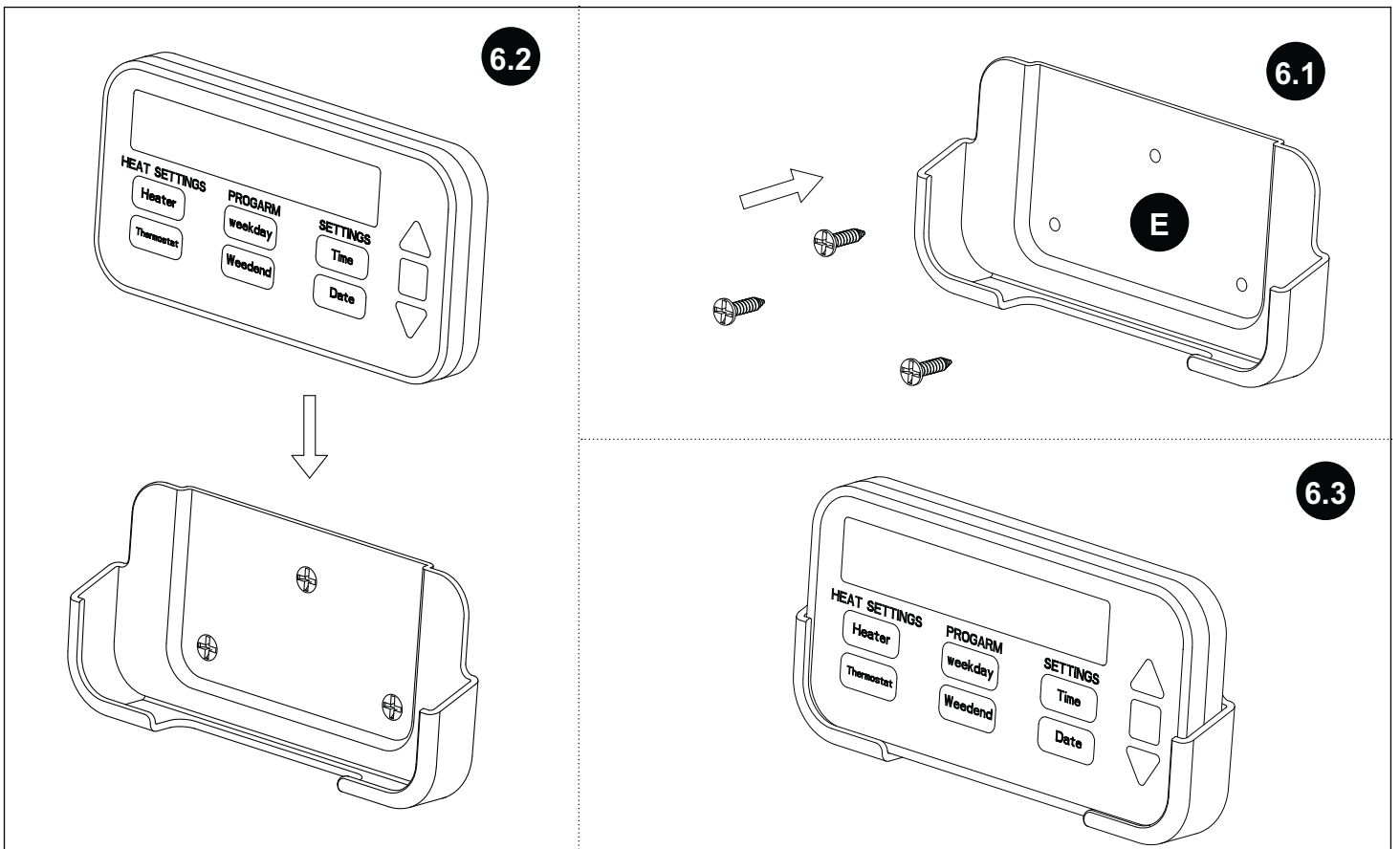
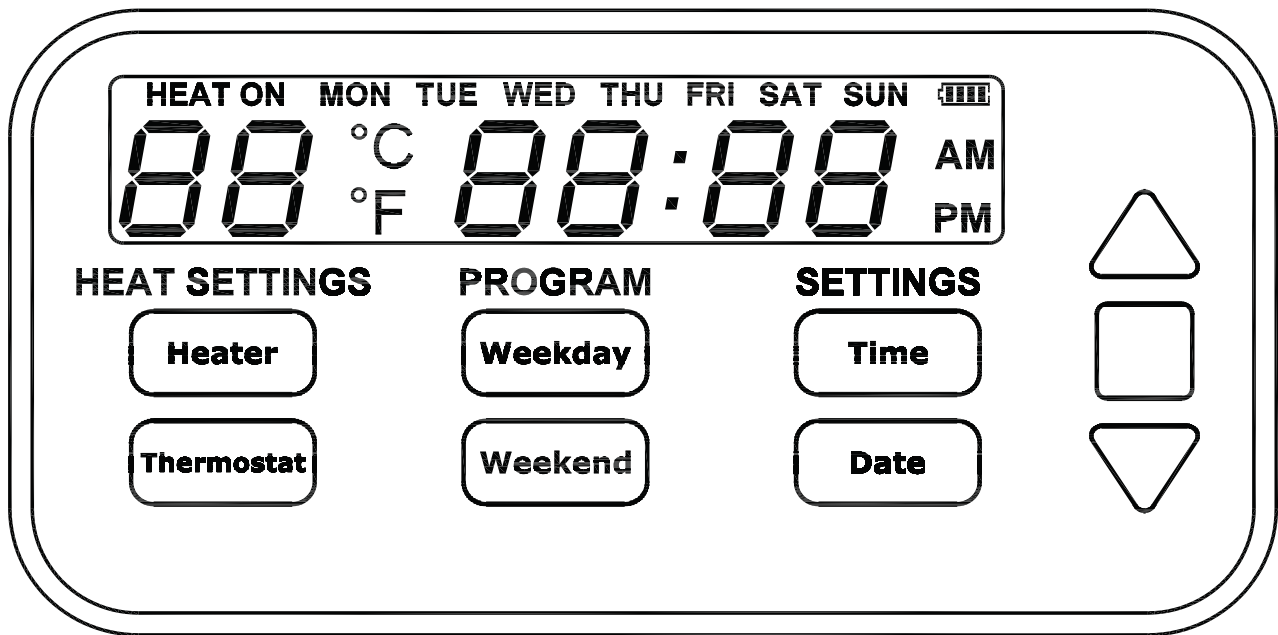


Fig. 6

# OPERATING INSTRUCTIONS • CONTROL FUNCTIONS



## Heater Functions:

**To Turn On or Off the Heater:** Press the HEATER button which will turn on or off the heater regardless of the programmed settings.

**To Adjust the Thermostat:** Press the the THERMOSTAT button; the temperature display will start to flash. Use the UP and DOWN buttons to select the desired thermostat setting. The thermostat adjustable range is 50°F to 97°F (10°C - 36°C.)

**To Change Between °F and °C:** Press and hold the HEATER button for 4 seconds.

## Setting the Time and Date:

**To Set the Time:** Press the TIME button, the hours will start to flash. Use the up and down arrows to adjust the hours, press enter to adjust the minutes next then press enter to select AM or PM.

**To Set the Date:** Press the DATE button, the day of the week will start to flash, use the up and down buttons to select the day of the week then press enter.

## Setting the Program:

**Weekday or Weekend Program:** the heater has two programs that can be individually set:

- Weekday: Monday - Friday
- Weekend: Saturday and Sunday

**To Set the Program:** press WEEKDAY or WEEKEND on the control panel to set either program.

- The starting time that the heater will turn on will begin to flash first; set the desired start time then press ENTER on the remote control.
- Next the display will be flashing the run length of the program. Select the desired run length then press enter.  
For example if the Weekday starting time was set at 8:00am and the run length at 2:00 then the heater will run Monday - Friday 8:00am - 10:00am.
- While the program is running it will use the current thermostat setting; adjust the thermostat to the desired temperature.

## **REPLACING THE REMOTE CONTROL BATTERIES**

---

When the remote control stops operating, or it's range seems reduced, it is time to replace the batteries. To extend the life of the batteries remove the batteries if the remote control won't be used for a long period of time.

1. The battery compartment is located on the back end of the remote.
2. Press the small tab inward as you slide the battery door open and remove the old batteries.
3. Insert (2) AAA batteries, making sure the + and - sides of the battery match the inside of the battery compartment.
4. Replace the battery door.

### **CAUTION:**

- Always purchase the correct size and grade of battery suitable for the intended use.
- Replace all batteries of a set at the same time.
- Clean the battery contacts and also those of the device prior to battery installation.
- Ensure the batteries are installed correctly with regard to polarity (+ and -).
- Remove batteries from equipment which is not to be used for an extended period of time.
- Remove used batteries promptly.

**Note:** Do not mix old and new batteries.

Do not mix alkaline, standard (carbonzinc), or rechargeable (nicad, nimh, etc) batteries.

**Caution: Do not ingest batteries.**

If batteries have been swallowed, contact the municipal poison control center.

## **DISPOSAL OF USED BATTERIES**

---

Batteries may contain hazardous substances which could endanger the environment and human health. Batteries shall not be treated as municipal waste. Batteries should be disposed of at an appropriate collection point for recycling.

By ensuring the used batteries are disposed of correctly, you will help prevent potential negative consequences for the environment and human health. The recycling of materials will help to conserve natural resources.

For more information about recycling of used batteries please contact your local municipality waste disposal service.

**NOTE:** This equipment has been tested and found to comply with the limits for Class B digital device, pursuant to part 15 of the FCC Rules. These limits are designed to provide reasonable protection against harmful interference in a residential installation. This equipment generates, uses, and can radiate radio frequency energy and, if not installed and used in accordance with the instructions, may cause harmful interference to radio or television reception. Interference can be determined by turning the equipment off and on. The user is encouraged to try to correct the interference by trying one or more of the following measures:

- Reorient or relocate the receiving antenna.
- Increase the separation between the equipment and the receiver.
- Connect the equipment into an outlet on a circuit different from that to which the receiver is connected.
- Consult the dealer or an experienced radio/TV technician for help.

## **FCC STATEMENT**

1. This device complies with Part 15 of the FCC Rules. Operation is subject to the following two conditions:
  - (1) This device may not cause harmful interference and
  - (2) This device must accept any interference received, including interference that may cause undesired operation
2. Changes or modifications not expressly approved by the party responsible for compliance could void the user's authority to operate the equipment.



# TROUBLESHOOTING GUIDE

PROBLEM	SOLUTION
1. Heater does not blow warm air.	1a. The ambient temperature is higher than the thermostat setting. 1b. Unplug the unit from the wall outlet for 2 hours. After 2 hours plug the unit back into wall outlet, and operate as normal. 1c. Check if the air inlet is blocked.
2. Low airflow at higher temperatures.	2a. Check if the air inlet is blocked.
3. The heater does not run in the program.	3a. Check that the thermostat is higher than the room temperature.
4. The heater is not responding to signals from the remote control.	4a. The remote and heater body may have become unpaired. To re-pair the remote and heater press and hold the HEATER and ENTER buttons simultaneously. The heater body will emit a long beep to indicate pairing was successful. 4b. See display to judge if no power of battery. 4c. Remote can be operate the unit within 7 m. Need to see if there have a long distance between remote control and heater body.
5. The heater does not work.	5a. Check the main power switch on the back of heater if it is in the ON position; 5b. The indicator light on the power cord not lit. Press the RESET button, if the indicator becomes re-lit function is normal.



**WARNING:** Make sure the power is turned off before proceeding. Any electrical repairs or rewiring of this unit should be carried out by a licensed electrician in accordance with national and local codes.

If repairing or replacing any electrical component or wiring, the original wire routing, color coding and securing locations must be followed.



**WARNING:** Electrical outlet wiring must comply with local building codes and other applicable regulations to reduce the risk of fire, electrical shock and injury to persons.



**WARNING:** Do not use this heater if any part of it has been under water. Immediately call a qualified service technician to inspect the heater and replace any part of the electrical system.



**Warning:** Disconnect power before attempting any maintenance or cleaning to reduce the risk of fire, electrical shock or personal injury.



**Warning:** During any service of this appliance, the power to the unit must be turned off. First turn the main power switch to the "OFF" position. Then remove the electrical plug from the wall outlet.

## **1-YEAR LIMITED WARRANTY**

---

The manufacturer warrants that your new vanity heater is free from manufacturing and material defects for a period of one year from date of purchase, subject to the following conditions and limitations.

1. Install and operate this electric heater in accordance with the installation and operating instructions furnished with the product at all times. Any unauthorized repair, alteration, willful abuse, accident, or misuse of the product shall nullify this warranty.
2. This warranty is non-transferable and is made to the original owner, provided that the purchase was made through an authorized supplier of the product.
3. The warranty is limited to the repair or replacement of part(s) found to be defective in material or workmanship, provided that such part(s) have been subjected to normal conditions of use and service, after said defect is confirmed by the manufacturer's inspection.
4. The manufacturer may, at its discretion, fully discharge all obligations with respect to this warranty by refunding the wholesale price of the defective part(s).
5. Any installation, labor, construction, transportation, or other related costs/expenses arising from defective part(s), repair, replacement, or otherwise of same, will not be covered by this warranty, nor shall the manufacturer assume responsibility for same.
6. The owner/user assumes all other risks, if any, including the risk of any direct, indirect or consequential loss or damage arising out of the use, or inability to use the product, except as provided by law.
7. All other warranties – expressed or implied –with respect to the product, its components and accessories, or any obligations/liabilities on the part of the manufacturer are hereby expressly excluded.
8. The manufacturer neither assumes, nor authorizes, any third party to assume, on its behalf, any other liabilities with respect to the sale of the product.
9. The warranties as outlined within this document do not apply to non accessories used in conjunction with the installation of this product.
10. This warranty gives you specific legal rights, and you may also have other rights which vary from state to state.

### **This warranty is void if:**

- a. The heater is subjected to prolonged periods of dampness or condensation.
- b. There is any unauthorized alteration, willful abuse, accident, or misuse of the product.
- c. You do not have the original receipt of purchase.

### **IF WARRANTY SERVICE IS NEEDED**

Contact the manufacturer at [www.twinstarhome.com](http://www.twinstarhome.com) or call our customer service department at 1-866-661-1218, 8:30 a.m.-5:30 p.m., EST, Monday-Friday. Make sure you have your warranty, your sales receipt, location of purchase and the model/serial number of your product.