

# Rugged Tablet PC

 User's Manual



# Table of Contents

BEFORE YOU START .....	4
PACKAGE CONTENTS .....	4
PRODUCT OVERVIEW .....	5
<i>Front View</i> .....	5
<i>Back View</i> .....	6
<i>Bottom View</i> .....	7
<i>Left View</i> .....	7
<i>Right View</i> .....	8
STATUS INDICATORS .....	8
<b>GETTING STARTED .....</b>	<b>9</b>
INSTALLING THE BATTERY .....	9
<i>Charging the Battery</i> .....	9
<i>When to replace the Battery Pack</i> .....	10
<i>Removing the Battery</i> .....	10
CONNECTING THE POWER .....	11
<i>Connecting the AC Adapter</i> .....	11
<i>Using Battery Power</i> .....	11
STARTING YOUR TABLET PC .....	12
<i>Turning On Your Device</i> .....	12
<i>Turning Off Your Device</i> .....	12
<b>OPERATING YOUR TABLET PC .....</b>	<b>13</b>
SWITCHING THE SCREEN PANEL (WINDOWS 8 ONLY) .....	13
<i>Start screen</i> .....	13
<i>Desktop</i> .....	14
<i>Apps view</i> .....	16
USING THE QUICK MENU .....	17
<i>Quick Menu Overview</i> .....	17
<i>Configuring the SETUP Menu Settings</i> .....	20
USING THE CAMERA .....	25
<i>Built-in Camera Application (Windows 8 only)</i> .....	25
<i>Durabook Camera Scan Application (Windows 7 only)</i> .....	26
<b>MAKING CONNECTIONS .....</b>	<b>30</b>
INSTALLING THE MEMORY CARD .....	30
INSTALLING THE SIM CARD .....	31
CONNECTING THE MICROPHONE/HEADSET .....	31
CONNECTING USB DEVICES .....	32
CONNECTING TO WIRELESS CONNECTIONS .....	33

<b>USING THE BIOS SETUP UTILITY .....</b>	<b>37</b>
BIOS SETUP MENU .....	37
MAIN MENU .....	39
ADVANCED MENU .....	40
BOOT MENU.....	41
SECURITY MENU .....	42
SAVE & EXIT MENU .....	43
<b>SPECIFICATIONS .....</b>	<b>44</b>
<b>APPENDIX .....</b>	<b>49</b>
COPYRIGHT.....	49
REGULATORY STATEMENT.....	49
<i>Federal Communications Commission Statement.....</i>	<i>49</i>
<i>Declaration of Conformity .....</i>	<i>49</i>
<i>RF exposure warning.....</i>	<i>50</i>
<i>Canada, Industry Canada (IC) Notices.....</i>	<i>50</i>
<i>Battery Disposal .....</i>	<i>51</i>
<i>CLASS 1 LASER PRODUCT .....</i>	<i>51</i>
SAFETY INSTRUCTIONS .....	53

# Before You Start

Congratulations on your purchase of this tablet PC.

This rugged tablet PC is portable and provides users with maximum mobile computing experience in a wide range of working environments. Before you begin using your tablet PC, read this chapter to familiarize yourself with the main components installed in the system.

## Package Contents

If any of following items is damaged, please contact your retailer.



Tablet PC



AC adapter



Power cord



Stylus Pen



Hand strap



X-strap

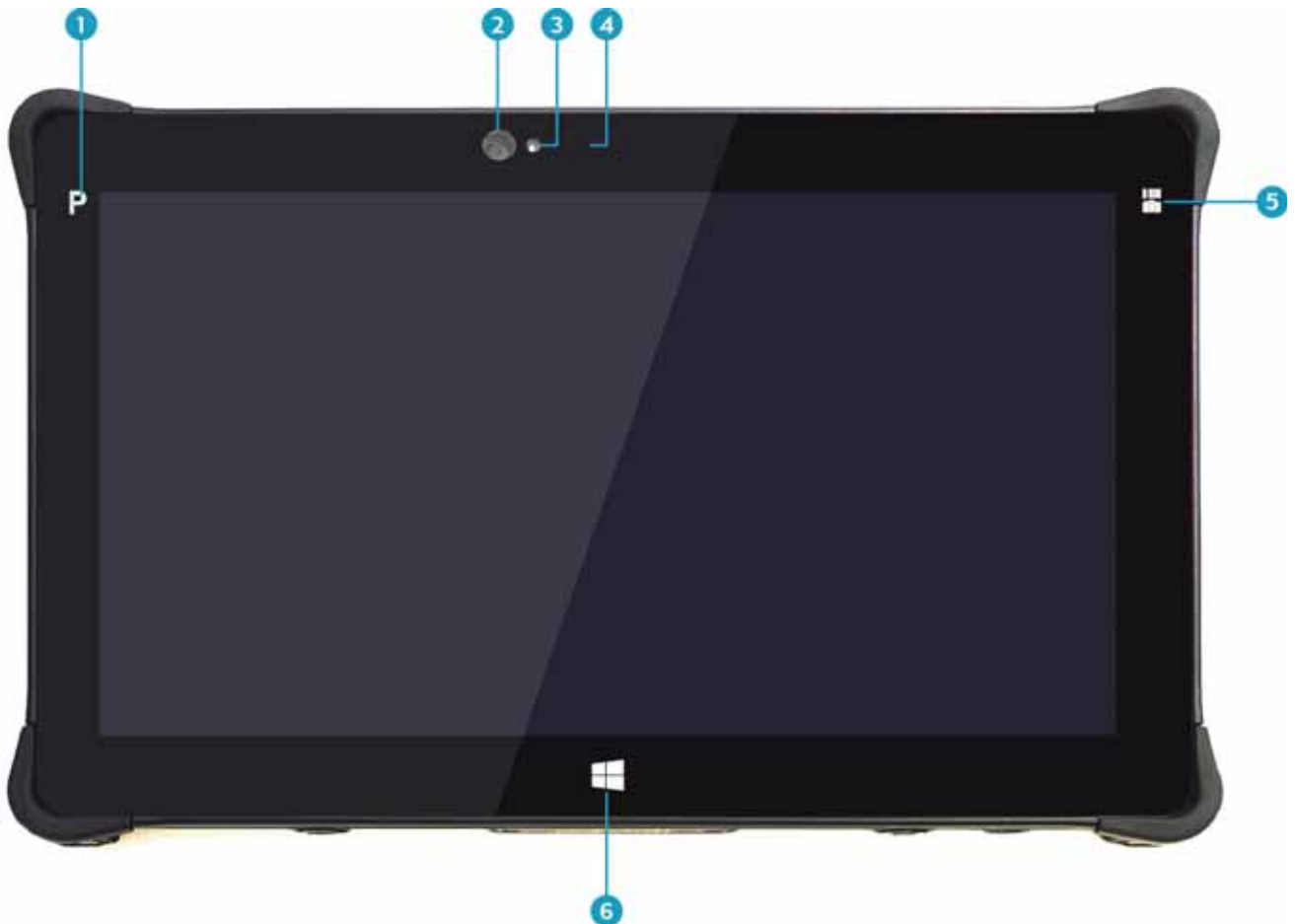


### NOTE

- The pictures are for reference only, actual items may slightly differ.

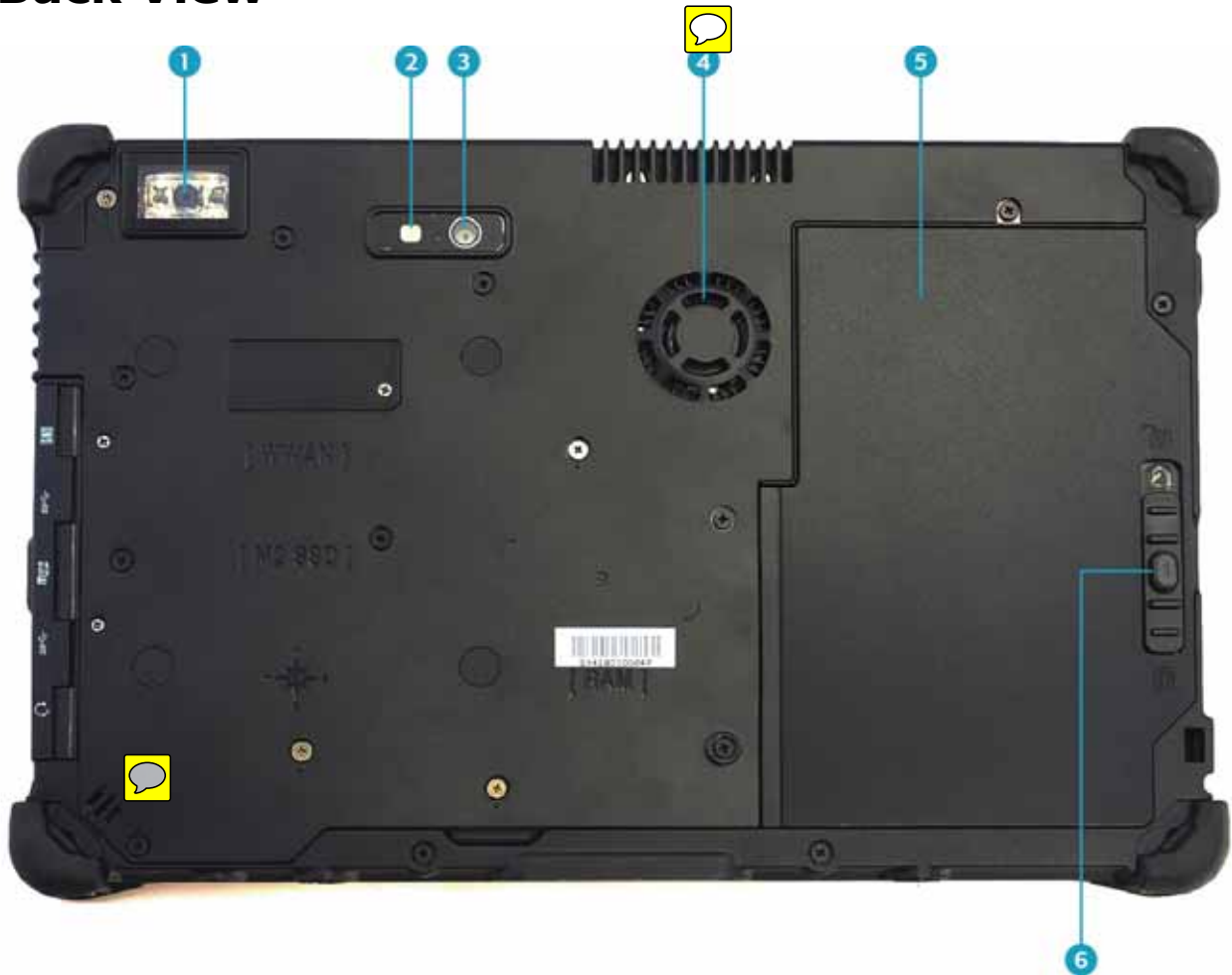
# Product Overview


## Front View



No.	Item	Description
1	Program button	Tap to enter the chosen program. (user definition)
2	Front camera	Use for video conference.
3	Ambient light sensor	Use to detect the current level of visible light in the surrounding environment.
4	Microphone	Record the surrounding sound.
5	Function button	The button functionality can be assigned via Quick Menu. <ul style="list-style-type: none"> <li>• Scanner button: Press to trigger the Barcode scan function if the barcode scanner is enabled.</li> <li>• Camera button: Press to take a picture.</li> </ul>
6	Home key	Tap to return to the Start screen (Windows 8 only).

## Back View



No.	Item	Description
1	Barcode scanner	Scan barcodes.
2	Camera LED flash	Provide additional lighting when taking pictures under low light environment.
3	Rear camera	Use to take pictures.
4	Speaker	Emit sound. 
5	Battery compartment	Contain the battery.
6	Battery latch release button	Press and hold the button to slide the battery latch to the unlock position.

## Bottom View



No.	Item	Description
1	Audio Combo jack	Connect a headphone or an external speakers or microphone.
2	USB 3.0 ports (x2)	Connect USB 3.0 peripheral devices.
3	Memory card slot	Use to insert memory cards to transfer pictures, music, and data between your Tablet PC and flash compatible devices. The card reader supports SD (Secure Digital), SDXC, SDHC, Mini-SD (with adapter), Micro-SD (with adapter).
4	SIM card slot	Use to insert a SIM card for WWAN, Gobi 3000, or LTE module connection.

## Left View



No.	Item	Description
1	Power button	Press to turn your tablet PC on or off.
2	Volume buttons	Press to adjust the volume level.
3	Kensington lock slot	Connect a Kensington-compatible tablet PC security lock.

## Right View






No.	Item	Description
1	Docking connector	Connect the tablet PC to a docking station.
2	DC-in jack	Connect the power adapter.

## Status Indicators

The status indicators in the upper side of the tablet PC light up when a particular function of the tablet PC is active.



Icon	Item	Description
	Power	The LED always lights on (green) when the system is running. When the system is in sleep mode, the LED blinks.
	RF	Indicate the status of RF (WLAN, WWAN, or Bluetooth) communication. The LED always lights on (blue) when the function is enabled.
	Battery	Indicate the battery status: <ul style="list-style-type: none"> <li>• Green: when battery is fully charged (95% or above)</li> <li>• Orange: when battery is charging</li> <li>• Flashing orange: charging error</li> <li>• Red: when battery capacity is lower than 10%</li> <li>• Off: when discharged</li> </ul>



# Getting Started

This chapter will help you get started using the device.

## Installing the Battery

To install the battery, follow the steps below:

1. Align and insert the battery to the battery compartment.
2. Push completely until the battery locks into place.



3. Slide the battery latch to the lock position to secure the battery.



## Charging the Battery

The Lithium-ion battery is not fully-charged upon purchase.

To charge the battery, follow the steps below:

1. Install the battery to your tablet PC. See procedures above.
2. Connect the AC adapter to the DC-in jack of your tablet PC.
3. Connect the AC adapter to the power cord.
4. Plug the power cord to an electrical outlet.

## **When to replace the Battery Pack**

The battery performance gradually decreases over time and usage. We recommend you to replace your battery pack after 18 to 24 months of usage.

## **Removing the Battery**

To remove the battery, follow the steps below:

1. Press and hold the battery latch release button to slide the battery latch to the unlock position.



2. Remove the battery out of the battery compartment.



# Connecting the Power

Your tablet PC can be powered up using the AC adapter or the Lithium-ion battery.

## Connecting the AC Adapter

The AC adapter powers up your tablet PC and charges the battery.



1. Connect the AC adapter to the DC-in jack of your tablet PC.
2. Connect the AC adapter to the power cord.
3. Plug the power cord to an electrical outlet.

## Using Battery Power

1. Install a charged battery in the battery compartment.
2. Remove the AC adapter (if plugged). Your tablet PC will automatically use the battery power.




### NOTE

- If your tablet PC is connected to an electrical outlet and the battery is installed, your tablet PC uses power from the electrical outlet.

# Starting Your Tablet PC

## Turning On Your Device

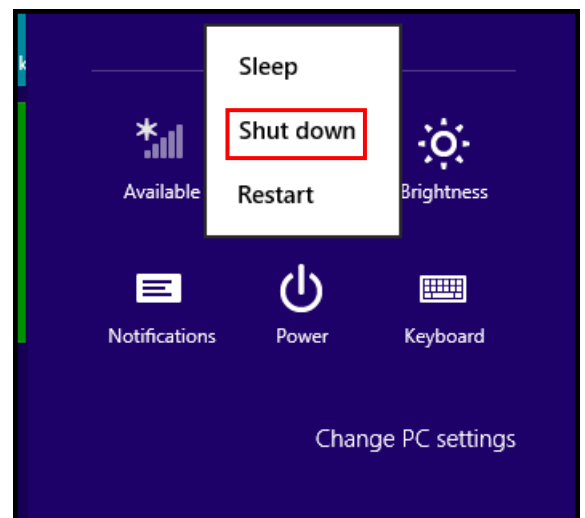
Press the  button until the Power LED lights up.

## Turning Off Your Device

It is important to properly shut down your tablet PC to avoid the loss of unsaved data. To shut down your tablet PC, do the following:

### On Windows 8

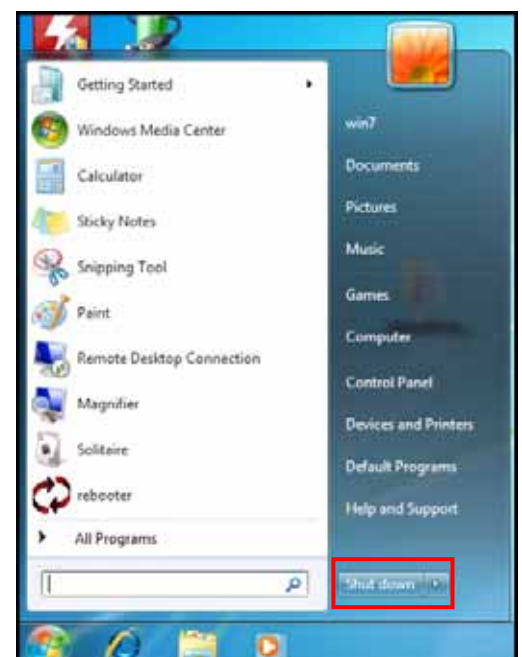
1. On the Start screen, swipe in from the right edge of the screen, then tap **Settings**.
2. Tap **Power** > **Shut down**.



### On Windows 7

Click **Start** () > **Shut down**.

Wait for your tablet PC to turn off power completely before removing the power source (if necessary).



# Operating Your Tablet PC

This chapter will guide you on how to use your Tablet PC.

## Switching the Screen Panel (Windows 8 only)

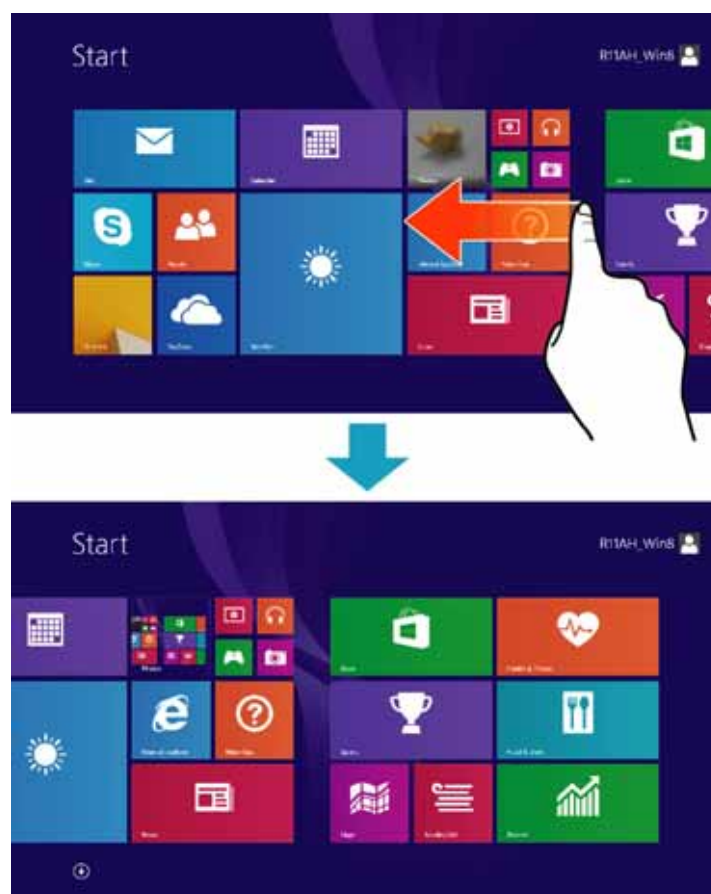
On Windows 8, there are three major user interfaces (UI) that you need be familiar with:

- Start Screen
- Desktop
- Apps View

### Start screen

The Start screen is where you can quick access to your favorite applications, people, website, and etc.



- Tap the desired app icon to launch the application.
- Swipe your finger to left or right to switch panels.

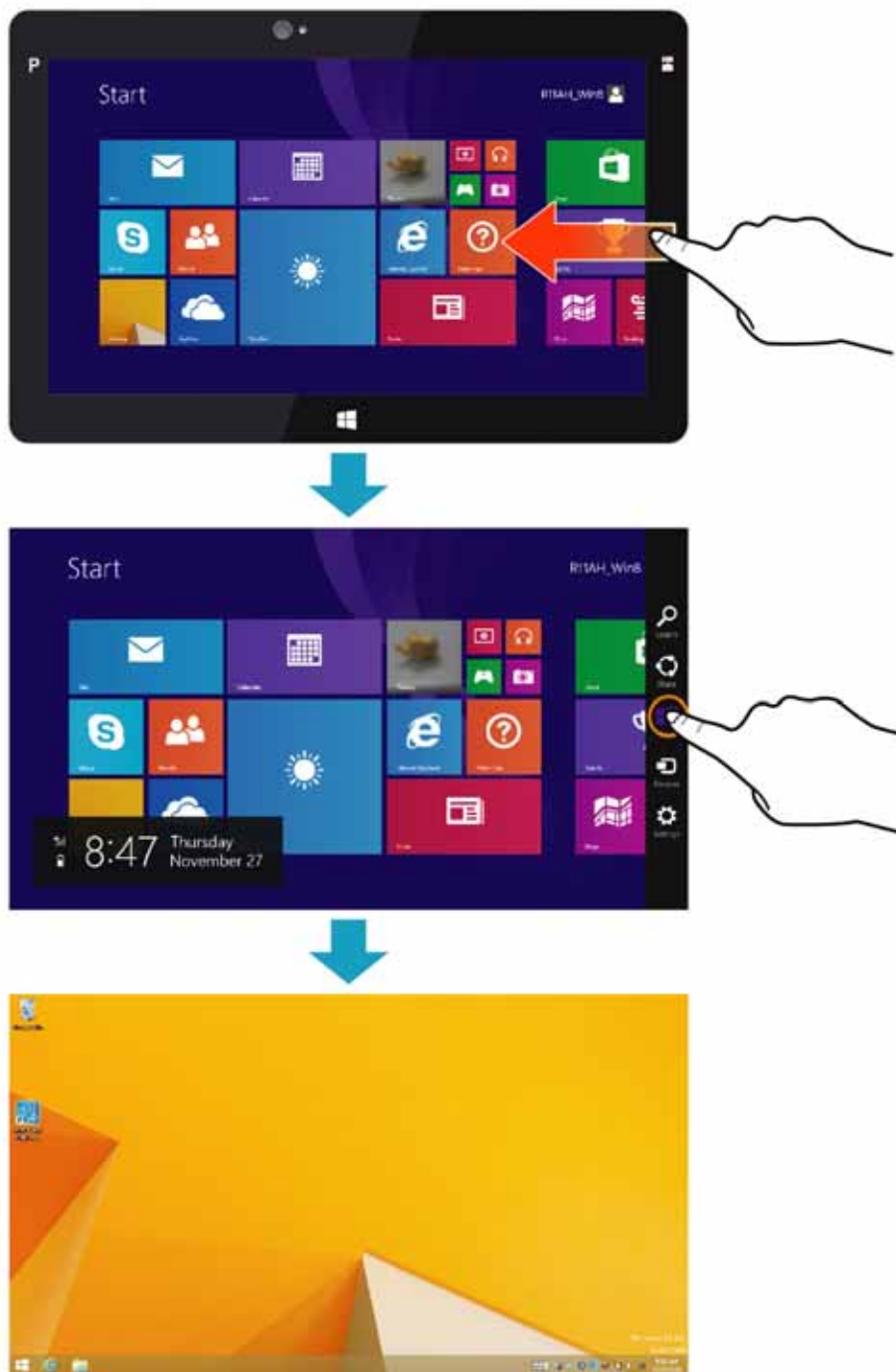


- Swipe in from the right edge of the screen to access the Start screen task bar and select the desired option.

## Desktop

The desktop view is similar as other Windows operating system. You can customize the desktop wallpaper and pin your favorite application on the task bar.

To switch to Desktop view, tap **Desktop** (  ) or swipe in from the right edge of the screen, then tap **Start** (  ).

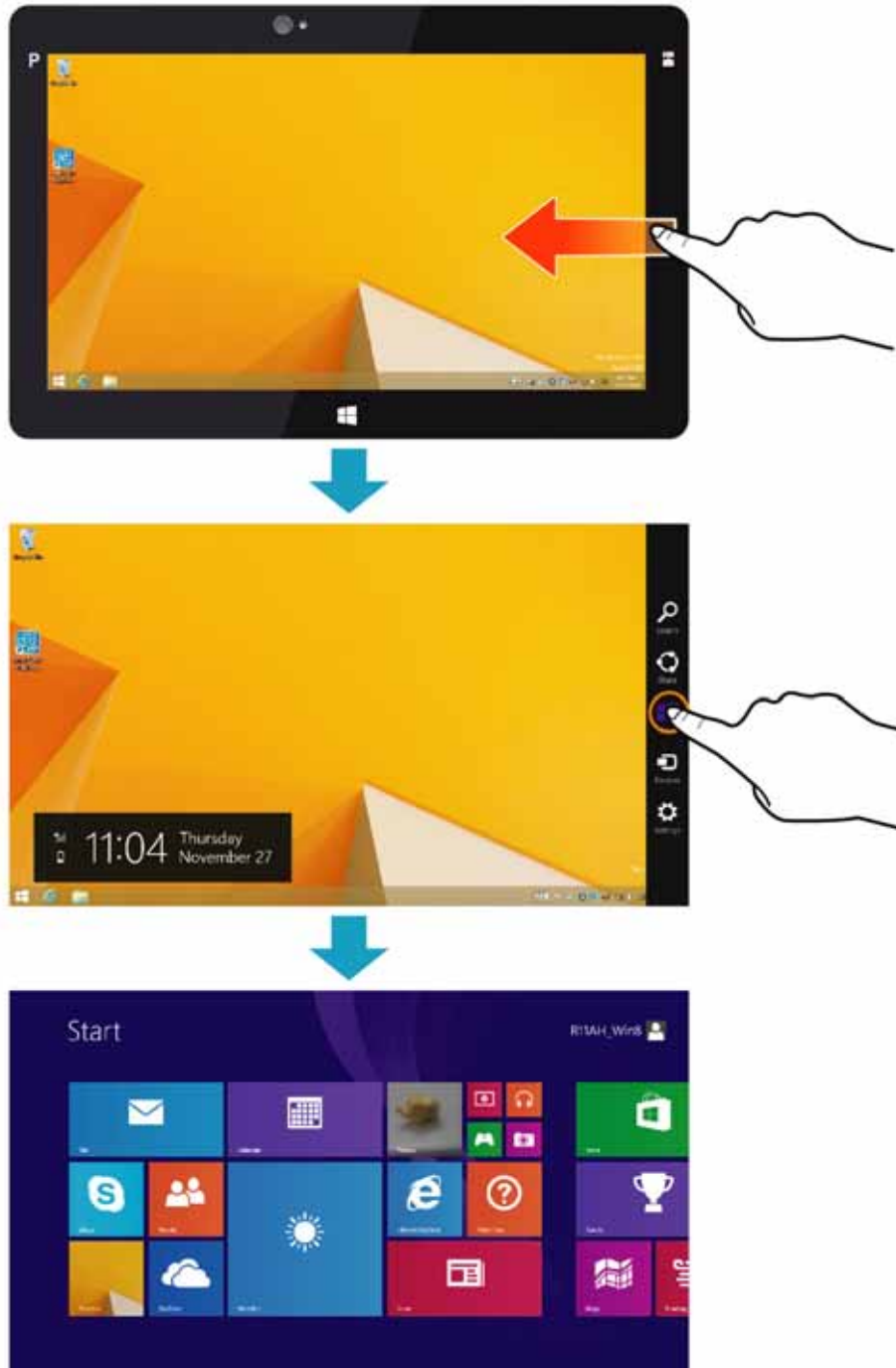


To switch to Start screen, do the following: swipe in from the right edge of the screen, then tap **Start** (☐).



**NOTE**

- You can also directly switch to Start screen by tapping ☐ on the task bar.





## Apps view

In Apps view, you can open an application, pin the desired application to Start or the Desktop task bar.

To switch to Apps view, do one of the following:

- slide up from the middle of the Start screen.



- click the arrow icon (⏴) on the left corner of the Start screen.



 **NOTE**

- For more information on Windows 8 basic operations, please visit <http://windows.microsoft.com/en-us/windows-8/getting-around-tutorial>.

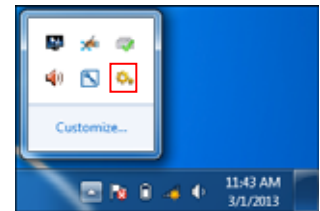


# Using the Quick Menu

To enter the Quick menu:



- On Windows 8: In Apps view, tap **Quick Menu** (⚙️).
- On Windows 7: Tap the arrow on the task bar to display hidden icons. Then tap the Quick Menu icon (⚙️).



## Quick Menu Overview










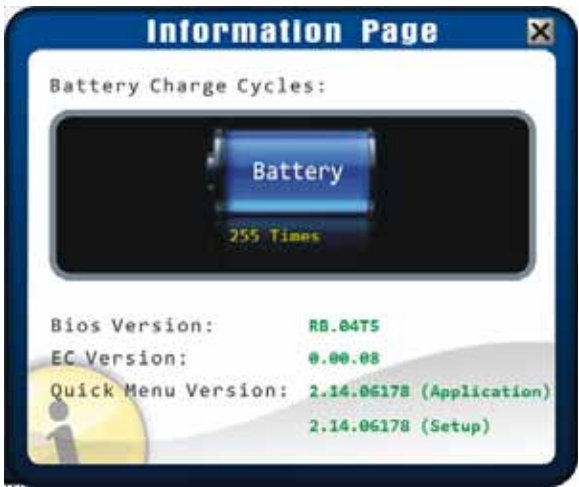


Windows 8







Windows 7

Icon	Item	Description
	Airplane mode	Tap the icon to enable/disable airplane mode.  <b>NOTE</b> <ul style="list-style-type: none"> <li>• When the Airplane mode is enabled, the wireless network (WLAN and WWAN), Bluetooth, and GPS will be automatically disabled.</li> </ul>
	WLAN	Tap the icon to enable/disable the Wi-Fi (WLAN) function.
	WWAN/GPS	Tap the icon to enable/disable the WWAN/GPS function.
	WWAN	Tap the icon to enable/disable the WWAN function.

## Operating Your Tablet PC

Icon	Item	Description
	Bluetooth	Tap the icon to enable/disable the Bluetooth function.
	GPS	Tap the icon to enable/disable the GPS function. 
	Auto-rotate	Tap the icon to enable/disable the Auto-Rotate screen function.
	Setup	Tap the respective tab to set hotkey, light sensor, external GPS antenna, and external WWAN antenna settings. For details, refer to "Configuring the SETUP Menu Settings". 
	Information	Tap the icon to view the battery charge cycle, Bios version, EC version, and Quick Menu version. 
	Keyboard	Tap the icon to display/hide the on-screen keyboard. 

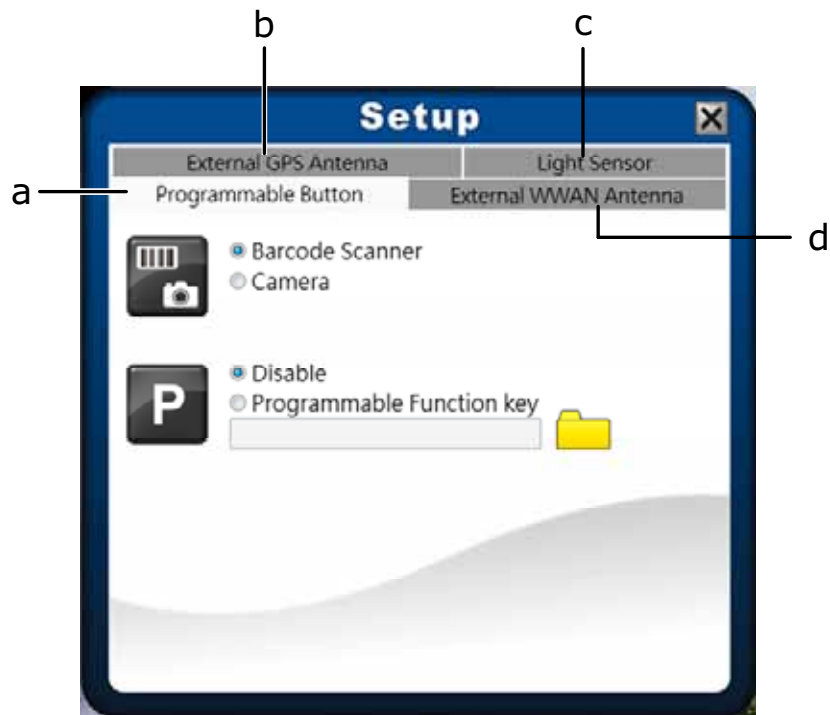
Icon	Item	Description
	Mobility center	Tap the icon to adjust brightness, screen orientation, volume, external display, battery status, sync, wireless network, and presentation settings.  
	Barcode	Tap the icon to trigger the Barcode Scanner function.
	External Devices	Tap the icon to enable Auto switch to the external WWAN/GPS antenna affixed on the vehicle dock: <ul style="list-style-type: none"> <li>• If users set "Dock with external WWAN antenna" in quick menu, the device will be auto switched to external WWAN antenna when docking.</li> <li>• If users set "Dock without external WWAN antenna" in quick menu, the device will NOT be auto switched to external WWAN antenna when docking.</li> <li>• If users set "Dock with external GPS antenna" in quick menu, the device will be auto switched to external GPS antenna when docking.</li> <li>• If users set "Dock without external GPS antenna" in quick menu, the device will NOT be auto switched to external GPS antenna when docking.</li> </ul>

 **NOTE**

- If the icon is gray (i.e. ) , this indicates the current function is disabled.

## Configuring the SETUP Menu Settings

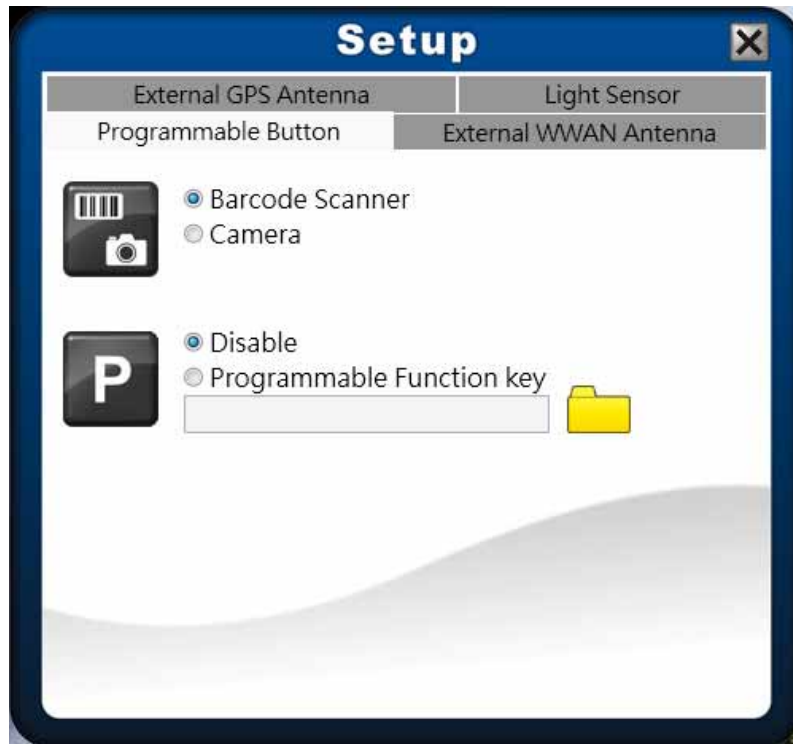
In Quick Menu, you can set the following settings via Setup menu:




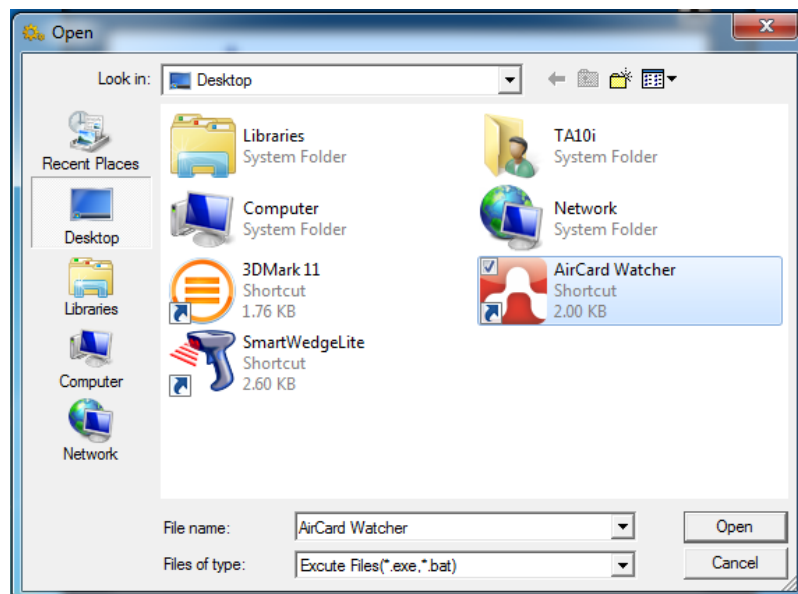
- a. Programmable Button
- b. External GPS Antenna
- c. Light Sensor
- d. External WWAN Antenna

## Configuring Hotkey

Tap the **Programmable Button** tab to configure the **Function** or **Program** button.

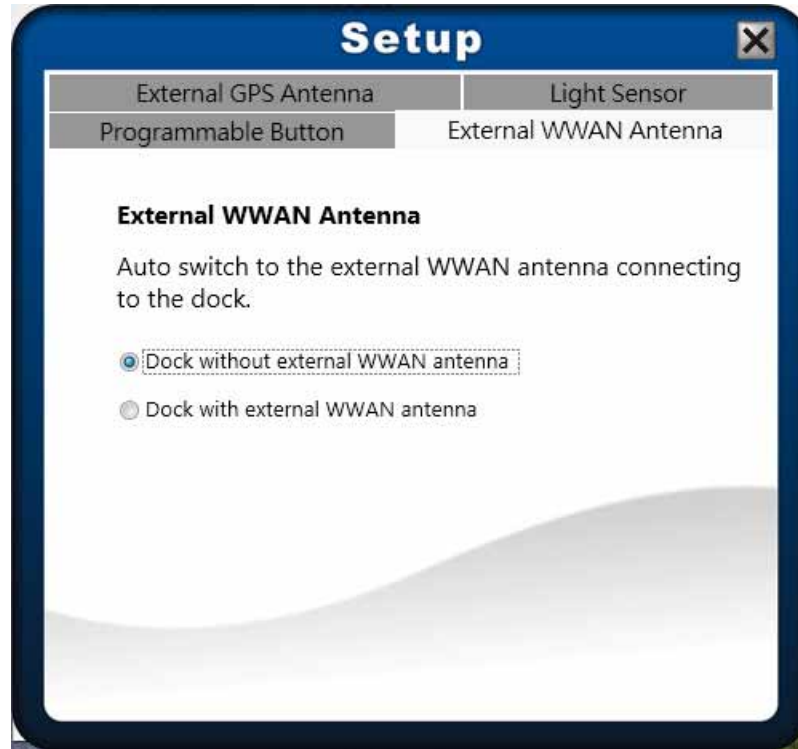


- If the device is not installed with a barcode scanner, the **Function** button can be set as the shutter button when using the Camera.
- To assign an application to the **Program** button, do the following:
  - I. Tap the folder icon (  ) to set up an application for the **Program** button.
  - II. Select the desired application and tap **Open**.



## Configuring External WWAN Antenna Switching Mode

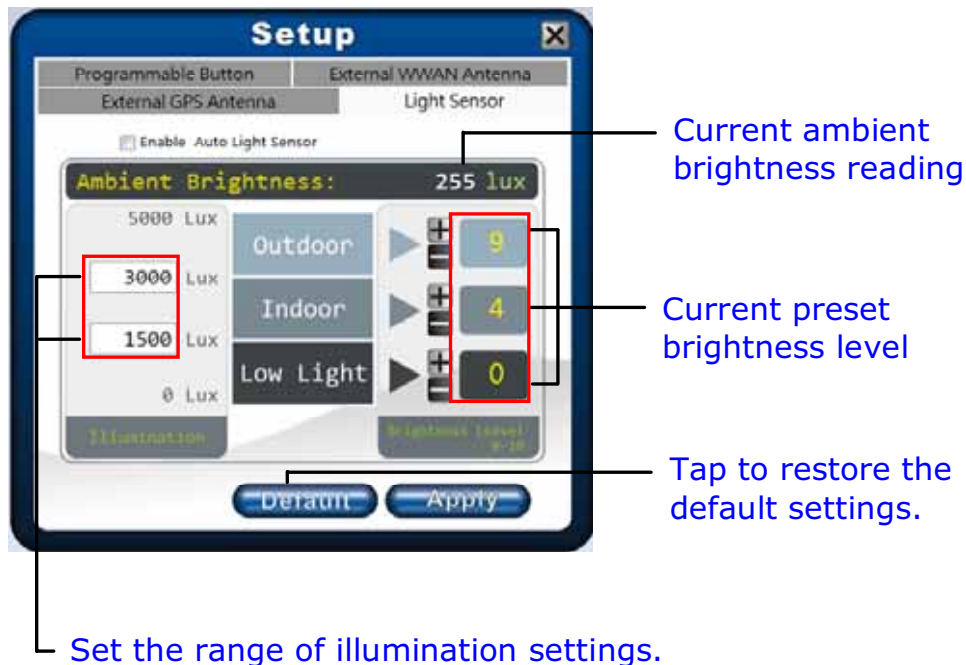
Tap the **External WWAN Antenna** tab to enable/disable the device to automatically switch to the external WWAN antenna when it is affixed on a docking station.



- **Dock with external WWAN antenna:** The device automatically switches to the external WWAN antenna when docking.
- **Dock without external WWAN antenna:** The device will disable the auto switch function to the external WWAN antenna when docking.

## Configuring Light Sensor Settings

Tap the **Light Sensor** tab to enable/disable the automatic light sensor function, specify and adjust the brightness level.





To setup the light sensor settings, do the following:

- To customize the illumination range according to the ambient lighting, enter the desired value in the first and second data box.

As an example in the above illustration:

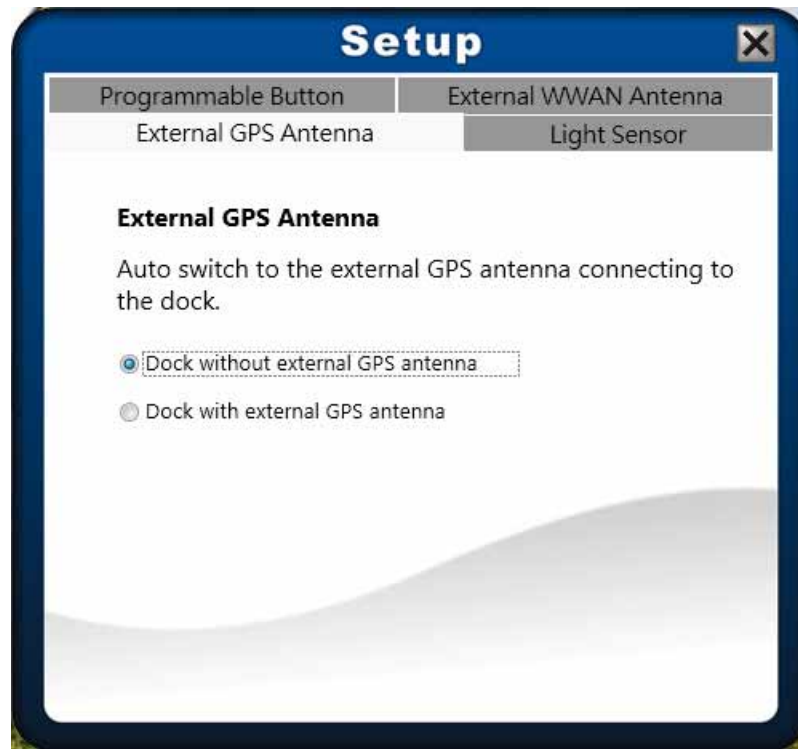
- Outdoor (5000 ~ 500 lux)
- Indoor (500 ~ 50 lux)
- Low Light (50 ~ 0 lux).

- To adjust the brightness level according to the ambient light, tap  or  to adjust the setting (0~10).
- To save all preset settings, tap **Apply**.
- To enable the automatic light sensor function, tap the **Enable Auto Light Sensor** checkbox.

The system will automatically adjust the LCD brightness according to the preset settings.

## Configuring External GPS Antenna Switching Mode

Tap the **External GPS Antenna** tab to enable/disable the device to automatically switch to the external GPS antenna when it is affixed on a docking station.




- **Dock with external GPS antenna:** The device automatically switches to the external GPS antenna when docking.
- **Dock without external GPS antenna:** The device will disable the auto switch function to the external GPS antenna when docking.



# Using the Camera

## Built-in Camera Application (Windows 8 only)

1. On Start screen, tap .
2. Compose your image.



3. Tap  or touch the screen to capture the photo.

To record a video, tap  to start recording. Then tap  to stop recording.




## Durabook Camera Scan Application (Windows 7 only)

This tablet PC supports **Durabook Camera Scan** application that enables users to take photos using the device camera.

### Launch the application

There are two ways to launch the application:





- Double-click "DuraBook Camera Scan"  on desktop.
- Tap **Start** > **All Programs** > **DuraBook**.






### Take Photos

Press the Record button  to capture the pictures.


### View Photos

- Press the Forward or Backward button "/" to view the recorded photos.
- Press the Play button "" to switch to Playback mode.
- In Playback mode, press the Preview button "" to switch back to Camera mode.


## Delete Photos

1. Press the Play button "" to switch to Playback Mode.
2. Use the Forward or Backward button "" to select the photo that you want to delete.
3. Press the Delete button "" and then choose **Yes** to delete the current photo.

## Record GPS Coordinates (Geotagging)

 is the GPS signal status located on the top right corner of the main program. GPS device must be implemented in the system for locating the positions and recording the coordinates when capturing photos. If GPS coordinates are not able to be received, the last coordinates would be used instead.

### GPS status indicator

 GPS device is working properly

 GPS device is not available

 GPS signals are unstable

If the user decided to use the external USB GPS device, do the following:

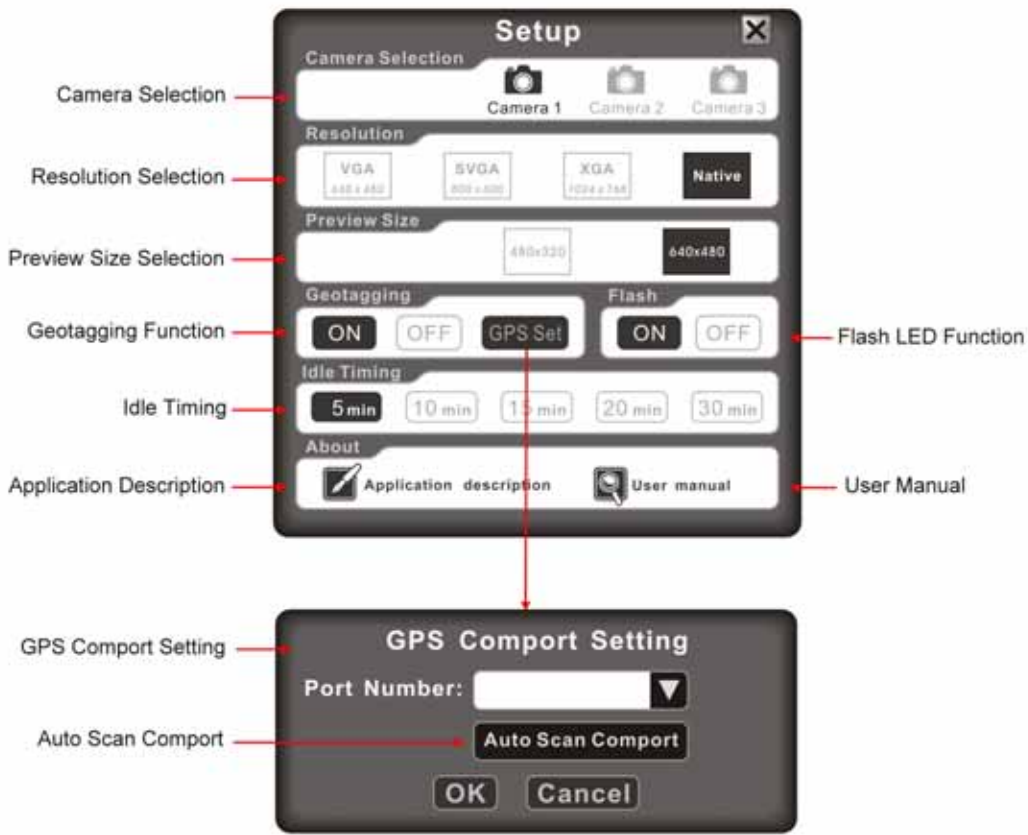
1. Press the Setup button "" to enter the Setup menu.
2. Tap  > **Auto Scan Comport.**

The detected Port Number is displayed on the screen.




## Operating Your Tablet PC



### How to Make Adjustments on Features:

Press the Setup button "⚙️" to enter the Setup menu.







### Camera Selection:

There are three cameras that you can select:  Camera 1  Camera 2  Camera 3.

-  "Camera 1" – the camera is available and ready to use.
-  "Camera 1" - the camera is not available.

Press the Leave button "❌" after you have chosen the desired camera.


### Resolution:

There are four resolution options that you can select:    .

If the Camera does not support these four resolutions, a "Change Resolution Error" message will appear on the screen. Press the Leave button "❌" to exit. (Native: maximum resolution)

**Preview Size:**

There are two preview size options that you can select:  .

Press the Leave button "" after you have chosen the desired preview size.

**Geotagging:**

Tap **ON** to enable the Geotagging feature.

Press the Leave button "" to exit.



**NOTE**

- The Geotagging feature will only be activated if the tablet PC is equipped with the GPS module.
- The camera logs the GPS position accurately if photos are taken outdoor.

**Flash:**

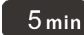


When capturing photos under the low light environment, tap **ON** to turn on the LED Flash.




**NOTE**

- The effective flash range is 50cm.

**Idle Timing:**

There are five Idle Timing options that you can select:    

.

Press the Leave button "" after you have chosen the desired time.



**NOTE**

- When the system is left idle for a certain period of time, the camera module(s) would then stop running. It would be up and running again once user wakes up the "DuraBook" application.

# Making Connections

This chapter will guide you on installing peripheral devices to maximize the use of your tablet PC.

## Installing the Memory Card

Your Tablet PC supports different types of memory cards to provide faster data transfer. Supported types are as follows:

- SD card
- SDHC card
- SDXC card
- Mini-SD card (with adapter)
- Micro-SD card (with adapter)
- MS card (Memory Stick/PRO)
- MMC card

To insert a memory card:

1. Push down and pull to open the I/O port cover.
2. Push the memory card into the memory card slot until it clicks into place.



# Installing the SIM Card

You can use a SIM card for wireless internet access.



## NOTE

- Check the availability of service and plan rates of data connection with your network service provider.

To insert a SIM card:

1. Push down and pull to open the I/O port cover.
2. Push a valid SIM card into the SIM card slot until it clicks into place.



# Connecting the Microphone/Headset

Your tablet PC is equipped with audio combo jack that enables you to use the headset or microphone.

- ❖ To connect to a headset, open the I/O port cover and plug the stereo headphone cable into the audio combo jack of your device.



- ❖ To connect to a microphone, open the I/O port cover and plug the microphone cable into the audio combo of your device.



## NOTE

- The headset and microphone are not included in the package. They are sold separately.

# Connecting USB Devices

You can connect your tablet PC to other USB devices, such as a mouse, keyboard, digital camera, printer, or an external hard disk drive.



1. Push down and pull to open the I/O port cover.
2. Connect one end of the USB cable to the USB port of your device.
3. Connect the other end of the cable to the USB device (if necessary).



## **NOTE**

- The USB cable is not included in the package. It is sold separately or it may come with your USB device.




# Connecting to Wireless Connections

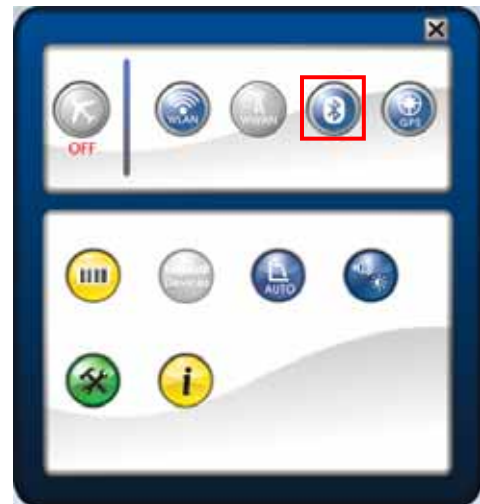
Your tablet PC can connect and communicate with other Bluetooth-enabled devices.


## Connecting to a Bluetooth Device

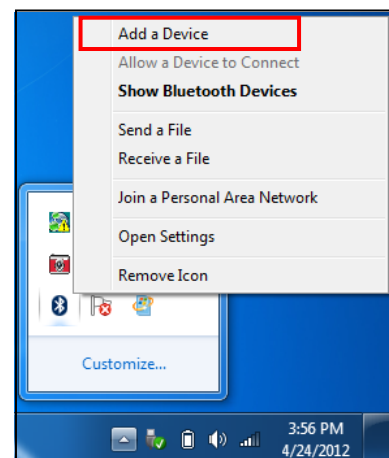
Your tablet PC can connect and communicate with other Bluetooth-enabled devices.

To add a device, follow the steps below:

1. Open the Quick menu.
2. Tap the Bluetooth icon (  ) to turn on the Bluetooth function.



3. Tap the arrow on the task bar to display hidden icons.
4. Tap the Bluetooth icon (  ).
5. Tap **Add a Device**. The system starts scanning for Bluetooth devices and displays the available devices.



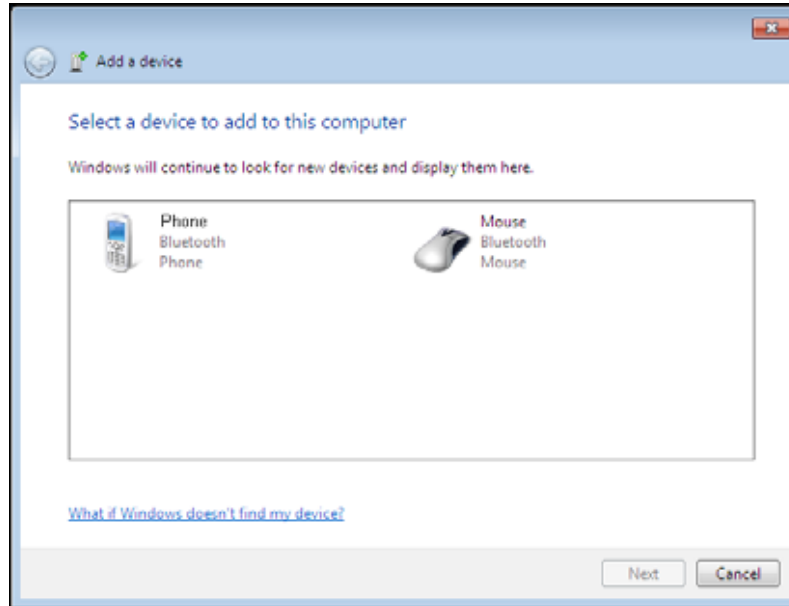
### NOTE

- If the device that you want to add does not appear on the screen, please check if the device is turned on and discoverable.

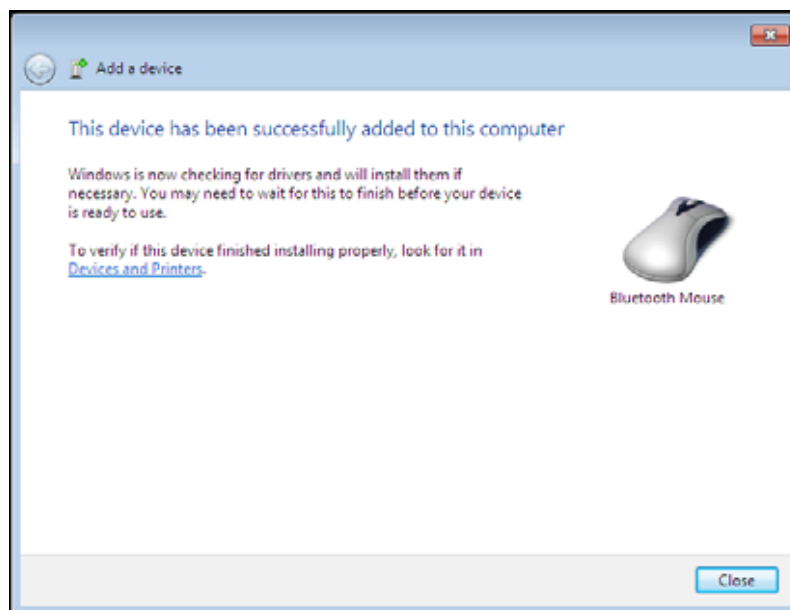
## Making Connections

---

6. Tap on a device, then tap **Next** to continue.



7. Tap **Close** to complete the pairing connection.




### NOTE

- Most Bluetooth-enabled devices need to be paired with your tablet PC. The PIN you enter on the tablet PC must be the same PIN to be entered on the other Bluetooth device.
- Once a partnership has been created, connecting to that device again will no longer require entering the PIN.


## Connecting to a Wireless Local Area Network

Your tablet PC comes with a WLAN module. A wireless network can be added either when the network is detected or by manually entering the settings information.

To connect, follow the steps below:

1. Open the Quick menu.
2. Tap the WLAN icon (  ) to turn on the wireless network function.




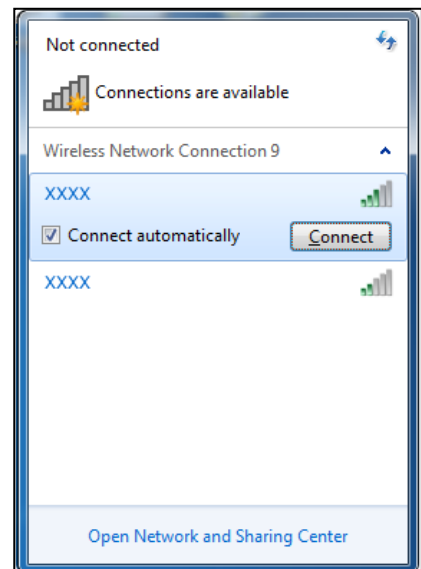
3. Tap the wireless network icon (  ) on the task bar.
4. Available wireless network connections are displayed. Tap the desired wireless network.
5. Tap **Connect**.  
Some networks require a network security key or a password.



**TIP**

Check **Connect automatically** box to automatically connect to this network when it is available.

6. Enter the network security key.
7. Tap **OK**.
8. After the connection is established, you can see the wireless icon (  ) in the Notification area.




**NOTE**

- Wi-Fi access requires service from a wireless service provider. Contact your service provider for more information.
- Actual wireless connectivity will depend on system configuration. Please contact your dealer for more information.

### Connecting to a Wireless Wide Area Network (WWAN)

With **WWAN** function, it allows your tablet PC to connect to the Internet using mobile or cellular data networks.

To enable the function, follow the steps below:

1. Insert a valid SIM card into the SIM card slot.
2. Open the Quick menu.
3. Tap the WWAN icon (  ) to turn on the WWAN function.



4. Launch **AirCard Watcher** application.
5. Tap **Connect** to enable the Internet connection via mobile data network.



6. To disconnect the connection, tap **Disconnect**.



# Using the BIOS Setup Utility

Your tablet PC has a BIOS setup utility which allows you to configure important system settings, including settings for various optional functions of the tablet PC. This chapter explains how to use the BIOS setup utility.

## BIOS Setup Menu

The BIOS Setup Utility allows you to configure your Tablet PC basic settings. When you turn your tablet PC on, the system reads this information to initialize the hardware so that it can operate correctly. Use the BIOS setup utility to change your tablet start-up configuration. For example, you can change the security and power management routines of your system.

### Starting the BIOS Setup Utility

You can only enter the BIOS setup utility as the tablet PC is booting, that is between the time you turn on the tablet PC and before the Windows interface appears.

If your tablet PC is already on, shut down your tablet PC completely (power off) and restart it and then press the **Delete** button to enter the setup utility.



#### NOTE

- You have to connect your device with an external keyboard first before starting the BIOS Setup Utility.



## Navigating and Entering Information in BIOS

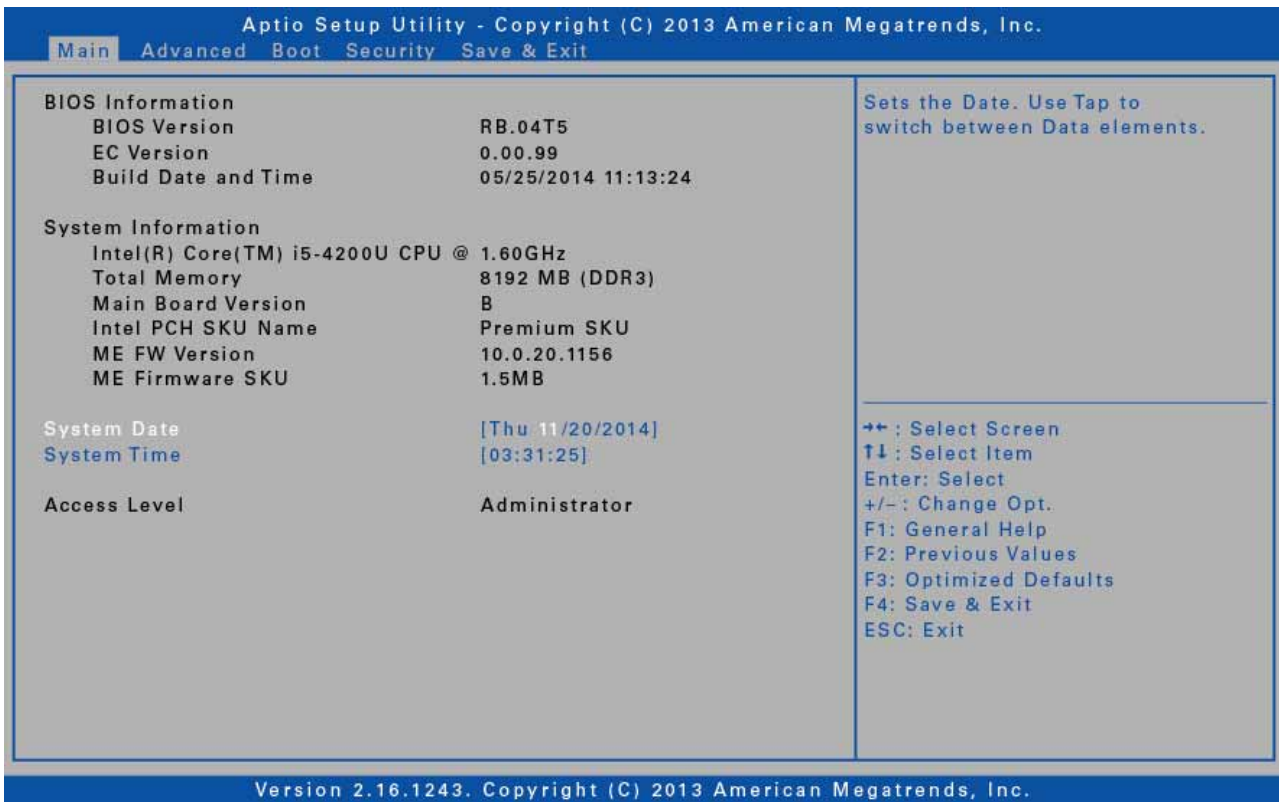
Use the following keys to move between fields and to enter information:

Keyboard	Description
← →	Selects screen.
↓ ↑	Moves up/down to select items.
<b>Enter</b>	Confirms the selection and enters the selected menu screen.
<b>+ / -</b>	Changes an option for the selected items.
<b>F1</b>	Displays the Help screen.
<b>F2</b>	Invokes the previous values.
<b>F3</b>	Loads optimized default values.
<b>F4</b>	Saves the changes and exits Setup.
<b>Esc</b>	Exits any section. If you wish to exit the BIOS utility without saving changes or go to the main menu, then press this key.

Users are allowed to enter new values to replace the default settings in certain fields, and the rest of the fields are specified by system default parameters and cannot be modified by users. Reverse the attribute of the main options and press the **Enter** button to enter into the submenu. Press the **Esc** button to return to the previous configuration page.

# Main Menu

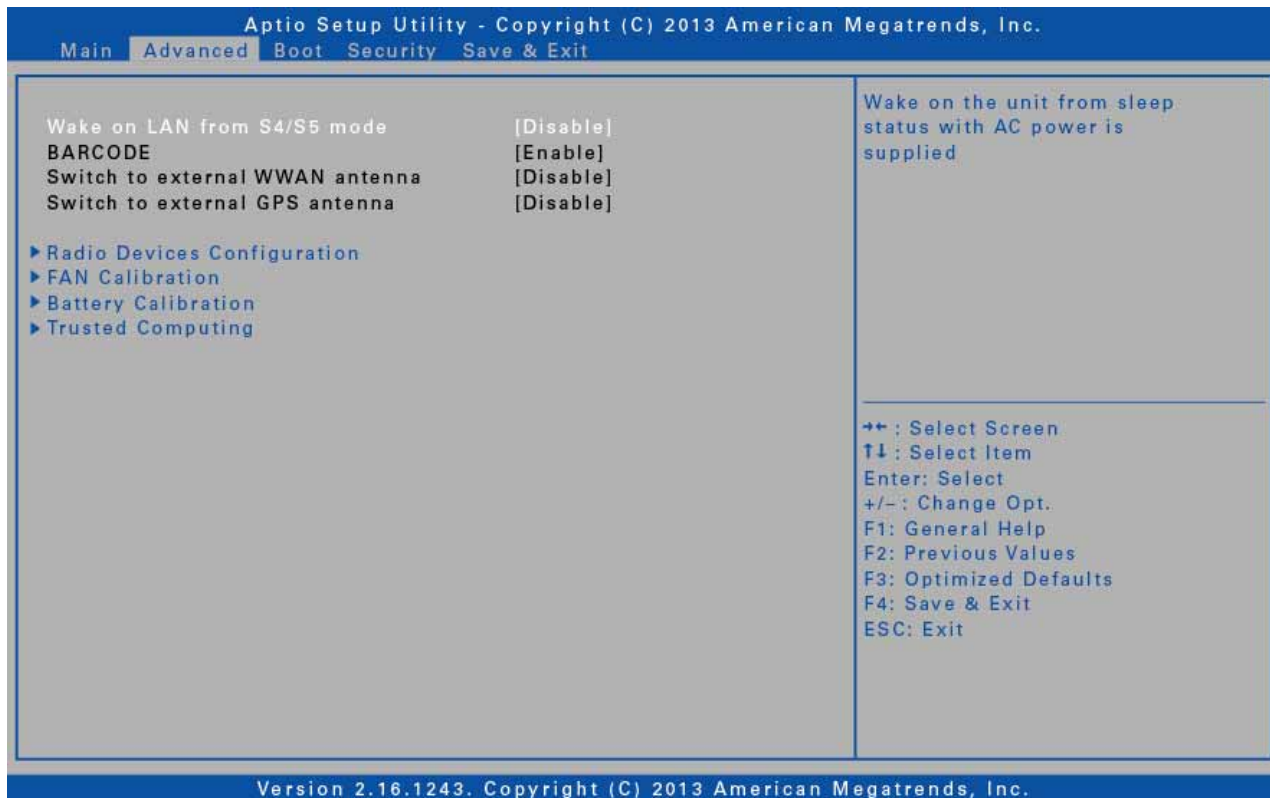
The Main menu displays the system overview information about the device, including the system date and time.



Item	Description
BIOS Information	Display the BIOS version detected during boot up.
System Information	Display the CPU type and speed, total memory, mainboard version, Intel PCH SKU name, ME FW version, and ME Firmware SKU.
System Date	Set the system date.
System Time	Set the system time.
Access Level	Display the access level user.

# Advanced Menu

The Advanced menu allows you to configure specific system settings.

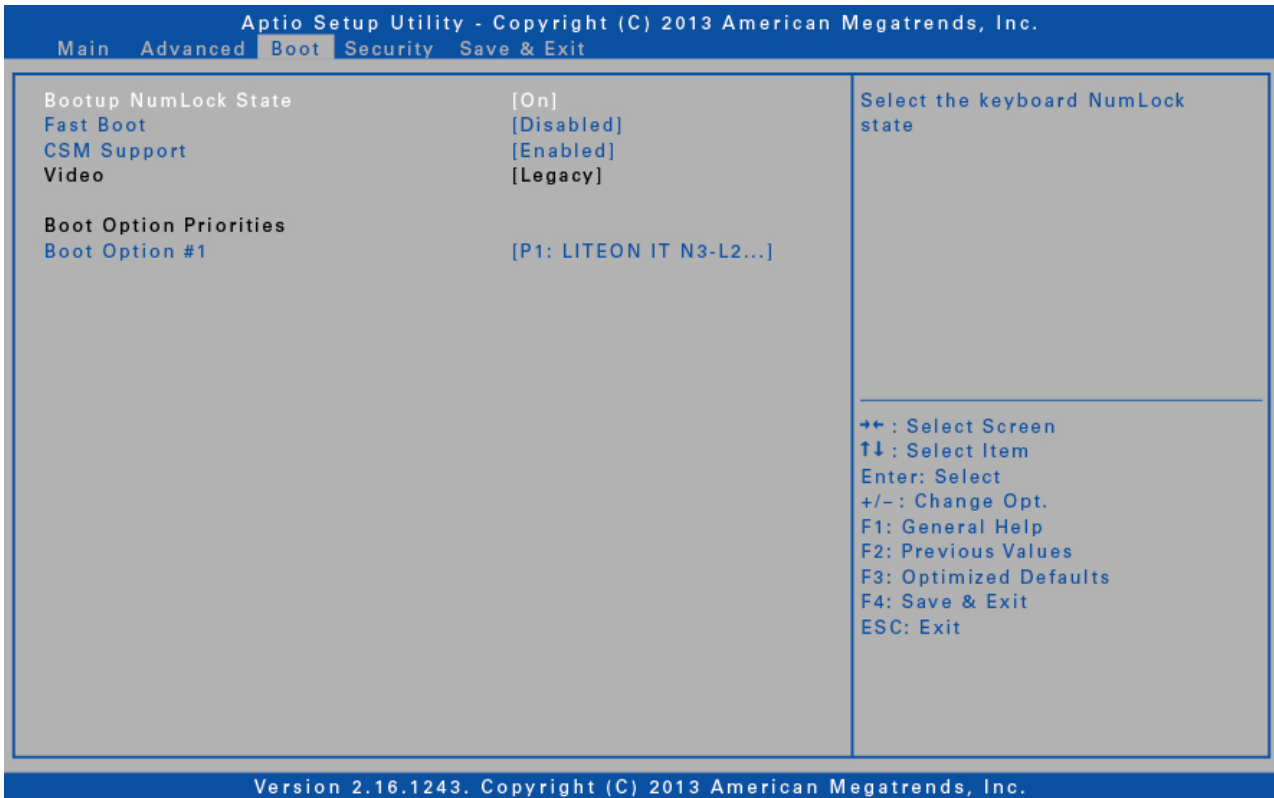


Item	Description
Wake on LAN from S4/S5 mode	Enable/disable the system to wake on the unit from Sleep status when the AC power is connected.
BARCODE	Display the barcode function status.
Switch to external WWAN antenna	Display the status of auto switch function to external WWAN antenna when docking.
Switch to external GPS antenna	Display the status of auto switch function to external GPS antenna when docking.
Radio Devices Configuration	Enable/disable radio devices.
FAN Calibration	Enable you to do fan calibration.
Battery Calibration	Enable you to do battery calibration.
Trusted Computing	Configure Trusted Computing settings.



# Boot Menu

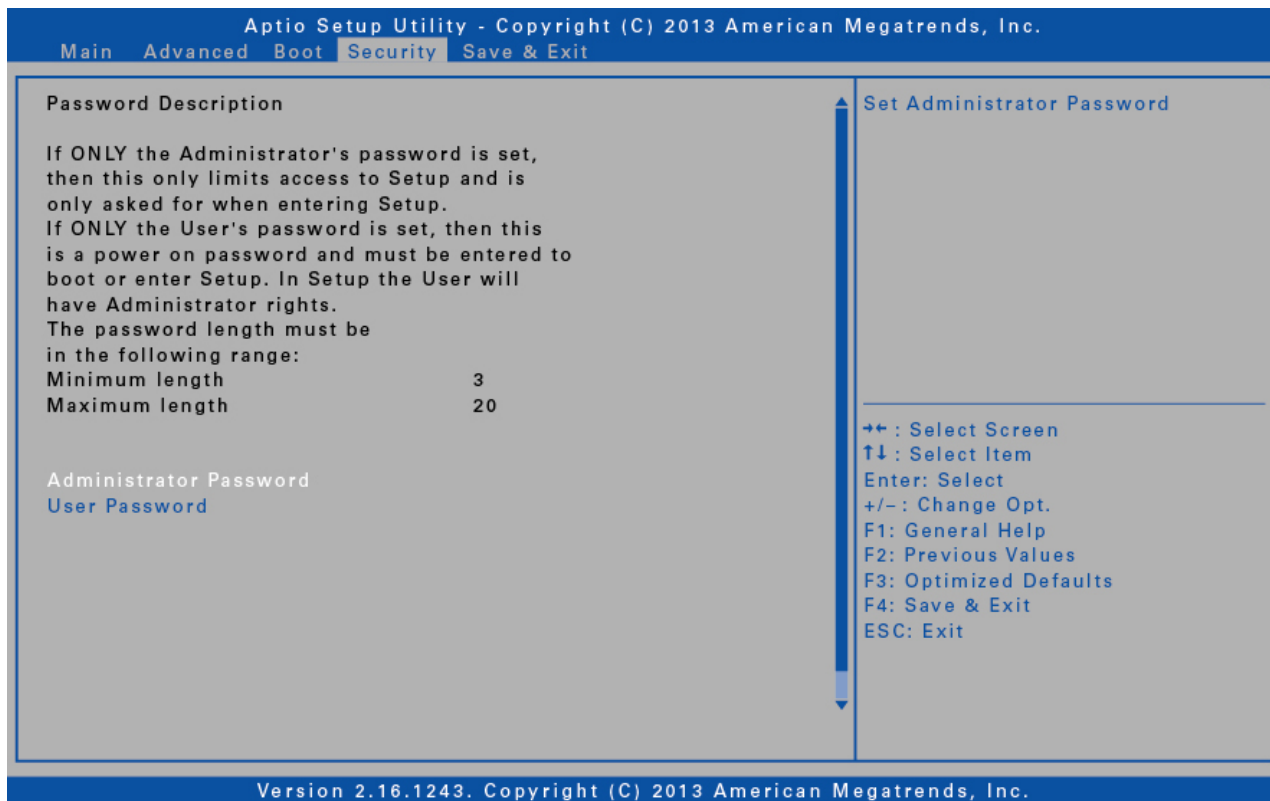
The Boot menu allows you to configure the boot settings and boot sequence.



Item	Description
Bootup NumLock State	Select the keyboard NumLock state.
Fast Boot	Enable/disable boot with initialization of a minimal set of devices required to launch active boot option. It has no effect for BBS boot options.
CSM Support	Enable/disable the system to launch an older OS.
Video	Control the execution of the selected Video OpROM type.
Boot Option Priorities	Set the system boot order.

# Security Menu

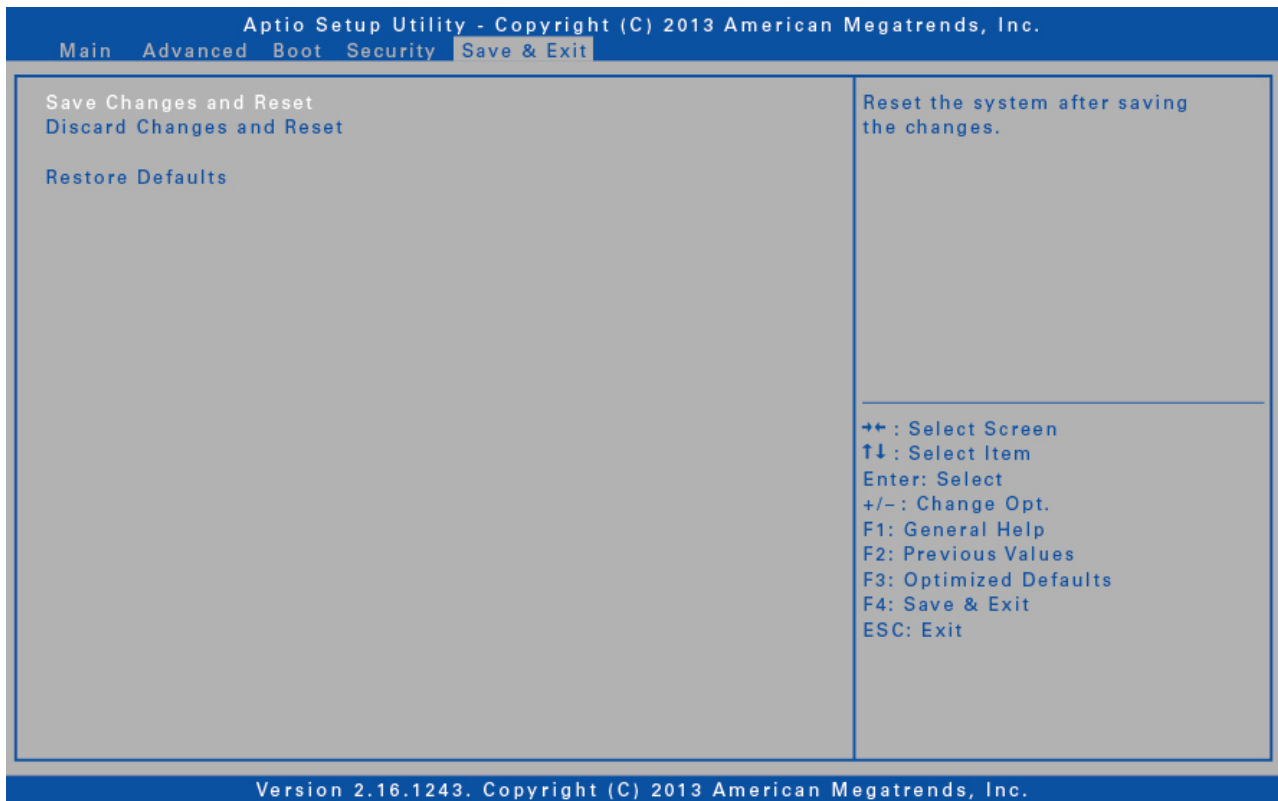
The Security menu allows you to set or change the Administrator and User passwords.



Item	Description
Administrator Password	Create or change the Administrator password.
User Password	Create or change the User password.

# Save & Exit Menu

The Save & Exit menu allows you to save/discard the changes and restore the default values for all setup options before leaving the BIOS Setup Menu.



Item	Description
Save Changes and Reset	Reset the system after saving the changes.
Discard Changes and Reset	Reset the system setup without saving any changes.
Restore Defaults	Restore the default values for all the setup options.

# Specifications

Item	Category	Specifications
CPU	Type & Speed	<ul style="list-style-type: none"> <li>Intel Haswell U series CPU i3/i5/i7</li> <li>Intel Haswell Y series CPU</li> </ul>
System Memory	Main Memory	<ul style="list-style-type: none"> <li>DDR3L 1333</li> <li>One 204-pin DDR3L SODIMM socket for 4GB, 8GB</li> </ul>
	Maximum Memory	8 GB
Mass Storage	SSD	<ul style="list-style-type: none"> <li>M2-SATA SSD 64GB/128GB (M2 Type, 2242)</li> <li>One M2 Socket for SSD 2242-D5-B</li> <li>M2 SSD is a CTO Option</li> </ul>
Video	LCD Display & Touch Panel	<p><b>Standard</b></p> <ul style="list-style-type: none"> <li>Power Button suspend to Ram (User selectable in OS Power Management Menu) 11.6" HD (1366x768 resolution) TFT LCD LED backlighting, brightness Before Touch Typical: 400nits (min: 340nits)</li> <li>Capacitive multi-touch panel After touch Typical: 360 nits (min: 306 nits)</li> </ul> <p><b>Advanced</b></p> <ul style="list-style-type: none"> <li>Power Button suspend to Disk (User selectable in OS Power Management Menu) Optional 11.6" HD (1366x768 resolution) TFT High Brightness LCD Before Touch Typical:800 nits (min: 680 nits)</li> <li>AR capacitive multi-touch panel After touch Typical:736 nits (min: 625 nits)</li> </ul> <p><b>Note:</b></p> <ul style="list-style-type: none"> <li>High brightness LCD with capacitive multi touch is through optical bonding</li> <li>Drop ball spec 227g, 90 cm</li> </ul> <p>All the glasses of touch panel are tempered glass.</p>
Audio	Features	<ul style="list-style-type: none"> <li>Intel high definition audio</li> <li>One speaker, sound pressure 80dB at 0.5M Average at 0.8, 1K, 1.2K, and 1.5KHz with nominal power</li> <li>One microphone</li> </ul>
Expansion Slot		<ul style="list-style-type: none"> <li>One Micro SD card slot</li> <li>Support SDHC, SDXC</li> </ul>

Item	Category	Specifications
Communications	Network/ Wireless	<ul style="list-style-type: none"> <li>▪ Intel Centrino Wireless AC 7260 (M2 socket type 2230)( WLAN 1x1 a/b/g/n/AC, Bluetooth 4.0 Class 1)</li> <li>▪ One M2 Socket for WLAN 2230-S3-E</li> <li>▪ Optional integrated M2 module (Type 3042)for WWAN/GPS EM7355 Module &amp; EM7305 module for Europe</li> <li>▪ One M2 Socket for WWAN3042-S3-B</li> <li>▪ GPS active antenna(CTO) and WWAN antenna(CTO)</li> <li>▪ Optional independent GPS module which is co-located in the location of WWAN M2 module</li> <li>▪ WWAN/GPS is a CTO option (One SIM Card slot)</li> </ul>
Other I/O Devices	Document Camera	<ul style="list-style-type: none"> <li>▪ Optional Integrated rear facing 5Mega Pixel camera at the back of unit</li> <li>▪ With LED flash light with 1500mcd, viewing angle 120°</li> <li>▪ LED flash light can be triggered when taking a photo</li> <li>▪ Support GeoTagging in the EXIF of JPEG file</li> <li>▪ Stable image: &lt;35°C</li> <li>▪ Document camera is a CTO option</li> </ul>
	Web Cam	Full HD Camera on the top of the front panel
	Barcode Scanner	<p>Optional Barcode scanner, support 1D, 1D/2D barcode (CTO). When the scanner successfully reads a bar code, the scanner will sound beep.</p> <p><b>1D/2D</b></p> <ul style="list-style-type: none"> <li>▪ (Optional) Intermec EA11+ ED30 with RS-232 interface Angle: 38.9° (Horizontal), 25.4°(Vertical) Range: 3.4- 83 cm Print Contrast: Min. 25% Ambient light condition: 0~100,000Lux</li> <li>▪ (Optional) Intermec EA31+ ED30 with RS-232 interface (Design Ready) Range: 5.5 -75 cm</li> </ul> <p><b>Note:</b></p> <ul style="list-style-type: none"> <li>• Barcode Scanner is Located on the back side of unit.</li> <li>• EA11&amp;EA31&amp;EV14 are designed in the same location.</li> <li>• Barcode Scanner is a CTO option.</li> </ul>

## Specifications

Item	Category	Specifications
Other I/O Devices	I/O Ports	<ul style="list-style-type: none"> <li>▪ Two USB3.0</li> <li>▪ One 3.5mm Audio combo jack for Mic/headset(CTIA standard)</li> <li>▪ One docking connector</li> <li>▪ One Expansion connector for Ext. devices on the back top side of the unit (1 x power, 1 x RS-232, 2 x USB 2.0)</li> <li>▪ DC-in Jack</li> </ul> <p><b>Note:</b></p> <ul style="list-style-type: none"> <li>• An I/O door (located on the right side of the unit) is designed to cover the USB port, audio jack, Micro SD card slot.</li> <li>• SIM card can be changed by opening the I/O door</li> </ul> <p><b>RF connectors located at the bottom (Factory Option)---</b>(Dual antenna connectors that can pass-through wireless connections including WWAN and GPS)</p> <p>RF switch board is CTO</p> <p>(Docking connector includes 1 x power, 1 x USB 3.0 (Including USB 2.0), 1 x HDMI)</p>
	NFC/RFID	<ul style="list-style-type: none"> <li>▪ Optional Ext. RFID reader support ISO 15693, 14443A/B stand, NFC ISO 18092 (work within 2cm) (Design/interface Ready)</li> <li>▪ NFC/RFID is a CTO option (located on the back side of unit)</li> </ul>
	MSR and Smart card reader	<ul style="list-style-type: none"> <li>▪ Optional Ext. Magnetic Stripe Reader support ANSI/ISO 7810, ISO 7811-1/6, 7813, JIS X6301, X6302, AAMVA</li> <li>▪ Two-frequency coherent phase (F2F) recording methods</li> <li>▪ ISO Track1 - IATA , Track2 - ABA and Track3 - THRIFT decoding methods</li> <li>▪ Bi-directional card reading</li> <li>▪ Supplies 54 byte value</li> <li>▪ Encrypts all track data and the value</li> <li>▪ Card speed through the unit may vary from 3 ips to 100 ips (7 cm/s to 250 cm/s)</li> </ul> <p>Optional ext. smart card reader slot meets ISO 7816. MSR/smart card module is a CTO option.</p> <p><b>Note:</b> MSR module doesn't support IP65 feature.</p>

Item	Category	Specifications
Other I/O Devices	Digitizer	Optional digitizer and active stylus pen with USB interface battery-charger. <b>Note:</b> The digitizer ONLY can be for the high brightness LCD.
	G-sensor, Gyroscope, and E-compass	<ul style="list-style-type: none"> <li>▪ Build-in G sensor auto switch Landscape/Portrait mode</li> <li>▪ E-compass and G-sensor auto rotate the map to the user's facing direction.</li> <li>▪ G-sensor and Gyroscope calculate the car's traveling distance when GPS can't receive the signals.</li> </ul> <b>Note:</b> <ul style="list-style-type: none"> <li>• For Windows 7: Default: ONLY one G-sensor, design G-sensor on the motherboard.</li> <li>• For Windows 8: Default: G-sensor, Gyroscope, and E-compass</li> <li>• Design 9 axis sensor on the daughter board.(CTO)</li> </ul>
	Light Sensor	Built in light ambient light sensor
Power	AC Adapter	<ul style="list-style-type: none"> <li>▪ Output: 19V, 3.42A; 65W</li> <li>▪ Input: 100V-240V, 50Hz-60Hz</li> <li>▪ Plug type: L shape</li> <li>▪ Plug length and diameters: 12mm, 5.5mm</li> </ul>
	Battery Module	<ul style="list-style-type: none"> <li>▪ One main battery pack in a unit.</li> <li>▪ Lithium polymer battery pack (11.1V, 4130 mA, 3S1P, 46 W)</li> <li>▪ Charging time: 3.5hrs to fully charge only one battery pack in the unit when system is off (Charging Environment Temperature in 25°C)</li> </ul> <b>Note:</b> Remove battery without using tool.
	Battery Life	7 hrs depends on configuration (LCD brightness $\geq$ 60 nits, Battery Mark 4.0.1/ Life test Method) *Battery life's test configuration depends on QRS report
Dimension & Weight		11.6" TFT HD B116XAN03.0 AUO <ul style="list-style-type: none"> <li>▪ Dimension: 298.5*192.0*20 mm</li> <li>▪ Weight: 1.23 kg (with main battery without optional devices)</li> </ul> <b>Note:</b> The depth of the barcode scanner area is 24.4 mm. The other area of system is 20 mm.

## Specifications

Item	Category	Specifications
Environment	Temperature / Humidity	<p>Operating Temperature : -10°C~ 55°C (Test Method: MIL-810G 501.5 Procedure II Modified)</p> <p><b>Note:</b></p> <ul style="list-style-type: none"> <li>• The battery charging when the ambient temperature 0°C~ 45°C (±3°C)</li> <li>• The battery discharging temperature when the ambient temperature -10~55°C</li> </ul> <p>Storage Environment Temperature : -33°C ~71°C</p> <p><b>Test Method:</b></p> <ul style="list-style-type: none"> <li>▪ High temperature Storage, MIL-810G, Method 501.5 Procedure I climatic category A1 – Hot Dry. (Modified)</li> <li>▪ Low temperature Storage, MIL-STD-810G, Method 502.5, Procedure I climatic category C1 – Basic Cold</li> </ul> <p>Operating Humidity: 95% (based on QRS test condition)</p>
	Battery / Adapter Power Mode	<p><b>Battery mode:</b></p> <ul style="list-style-type: none"> <li>▪ Back side skin spec: delta T &lt; =20 degree C at Ta=25</li> <li>▪ Panel skin spec: delta T &lt; = 20 degree C at Ta=25</li> <li>▪ Vertical test</li> </ul> <p><b>Adapter Power mode:</b></p> <p>Panel skin: delta T &lt; = 20 degree C at Ta=25 in charging</p>

*\*Design and Specifications are subject to change without prior notice.*



---

# Appendix

## Copyright

Copyright© 2014. All rights reserved.

No part of this user manual may be transmitted, stored in a retrieval system, or translated into any language or computer language, in any form or by any means, without the prior written permission of the manufacturer. Information is subject to change without prior notice.

## Regulatory Statement

### Federal Communications Commission

#### Statement

This equipment has been tested and found to comply with the limits for a Class B digital device, pursuant to Part 15 of the FCC Rules. These limits are designed to provide reasonable protection against harmful interference in a residential installation. This equipment generates, uses, and can radiate radio frequency energy and, if not installed and used in accordance with the instructions, may cause harmful interference to radio communications. However, there is no guarantee that interference will not occur in a particular installation. If this equipment does cause harmful interference to radio or television reception, which can be determined by turning the equipment off and on, the user is encouraged to try to correct the interference by one or more of the following measures:

- Reorient or relocate the receiving antenna.
- Increase the separation between the equipment and the receiver.
- Connect the equipment into an outlet on a circuit different from that to which the receiver is connected.
- Consult the dealer or an experienced radio/TV technician for help.

Shielded interconnect cables and shielded AC power cable must be employed with this equipment to insure compliance with the pertinent RF emission limits governing this device. Changes or modifications not expressly approved by the system's manufacturer could void the user's authority to operate the equipment.

#### Declaration of Conformity

This device complies with part 15 of the FCC rules. Operation is subject to the following conditions:

## Appendix

---

- This device may not cause harmful interference
- This device must accept any interference received, including interference that may cause undesired operation.

## RF exposure warning

This equipment must be installed and operated in accordance with provided instructions and must not be co-located or operating in conjunction with any other antenna or transmitter. End-users and installers must be provided with antenna installation instructions and transmitter operating conditions for satisfying RF exposure compliance.

SAR Value (stand-alone): 1.20W/kg

SAR Value(simultaneous transmission): 1.41W/kg

This device is operation in 5.15 – 5.25GHz frequency range, then restricted in indoor use only, Outdoor operations in the 5150~5250MHz is prohibit.

This device is slave equipment, the device is not radar detection and not ad-hoc operation in the DFS band.

## Canada, Industry Canada (IC) Notices

This Class B digital apparatus complies with Canadian ICES-003 and RSS-210. Operation is subject to the following two conditions: (1) this device may not cause interference, and (2) this device must accept any interference, including interference that may cause undesired operation of the device.

### Radio Frequency (RF) Exposure Information

The radiated output power of the Wireless Device is below the Industry Canada (IC) radio frequency exposure limits. The Wireless Device should be used in such a manner such that the potential for human contact during normal operation is minimized.

This device has been evaluated for and shown compliant with the IC Specific Absorption Rate ("SAR") limits when installed in specific host products operated in portable exposure conditions.

### Canada, avis d'Industry Canada (IC)

Cet appareil numérique de classe B est conforme aux normes canadiennes ICES-003 et RSS-210.

Son fonctionnement est soumis aux deux conditions suivantes : (1) cet appareil ne doit pas causer d'interférence et (2) cet appareil doit accepter toute interférence, notamment les interférences qui peuvent affecter son fonctionnement.

**Informations concernant l'exposition aux fréquences radio (RF)**

La puissance de sortie émise par l'appareil de sans fil est inférieure à la limite d'exposition aux fréquences radio d'Industry Canada (IC). Utilisez l'appareil de sans fil de façon à minimiser les contacts humains lors du fonctionnement normal.

Ce périphérique a été évalué et démontré conforme aux limites SAR (Specific Absorption Rate – Taux d'absorption spécifique) d'IC lorsqu'il est installé dans des produits hôtes particuliers qui fonctionnent dans des conditions d'exposition à des appareils portables.

**Battery Disposal**

THIS PRODUCT CONTAINS A LITHIUM-ION OR NICKEL-METAL HYDRIDE BATTERY. IT MUST BE DISPOSED OF PROPERLY. CONTACT LOCAL ENVIRONMENTAL AGENCIES FOR INFORMATION ON RECYCLING AND DISPOSAL PLANS IN YOUR AREA.

**CLASS 1 LASER PRODUCT****LASERSCHUTZKLASSE 1 PRODUKT TO EN60825**

**CAUTION** THIS APPLIANCE CONTAINS A LASER SYSTEM AND IS  
**(ATTENTION):** CLASSIFIED AS A "CLASS 1 LASER PRODUCT." TO USE THIS MODEL PROPERLY, READ THE INSTRUCTION MANUAL CAREFULLY AND KEEP THIS MANUAL FOR FUTURE REFERENCE. IN CASE OF ANY TROUBLE WITH THIS MODEL, PLEASE CONTACT YOUR NEAREST "AUTHORIZED SERVICE STATION." TO PREVENT DIRECT EXPOSURE TO THE LASER BEAM, DO NOT TRY TO OPEN THIS ENCLOSURE.

**ANNEX IV****Symbol for the marking of electrical and electronic equipment**

The symbol indicating separate collection for electrical and electronic equipment consists of the crossed-out wheeled bin, as shown below. The symbol must be printed visibly, legibly and indelibly.



## Appendix

---

### **CAUTION FOR ADAPTER**

THE TABLET PC IS FOR USE WITH DEDICATED AC ADAPTER.

### **BATTERY SAFETY**

DANGER OF EXPLOSION IF BATTERY IS INCORRECTLY REPLACED.  
REPLACE ONLY WITH THE SAME OR EQUIVALENT TYPE RECOMMENDED BY THE  
MANUFACTURER. DISPOSE OF USED BATTERIES ACCORDING TO THE  
MANUFACTURER'S INSTRUCTIONS.

### **CAUTION FOR RJ-45**

The RJ-45 jack is not used for telephone line connection.

---

# Safety Instructions

These safety instructions should always be observed to ensure safe operation when handling the device.

- Do not place this device on an unstable table or surface. The device may fall, causing serious damage to its housing and components.
- Do not cover the device, or block the air ventilation holes of the device with any other objects.
- Do not use any sharp object to tap on the display screen.
- Do not expose the device to direct sunlight and dusty environments.
- Keep the device away from excessive heat and humidity.
- Keep liquids away from the device.
- Keep the device away from any magnetic emitting devices as this may affect the quality of the wireless signal reception.
- When using an AC adapter:
  - ✓ Place this device in a location that is close enough to an electrical outlet to accommodate the length of the power cord.
  - ✓ Operate this device only with the type of power source indicated on the device marking label.
  - ✓ Disconnect the AC adapter from the electrical outlet if the device is not being used for an extended period of time.
- When cleaning the device,
  - ✓ Be sure to turn off the device properly and unplug the AC adapter before cleaning.
  - ✓ Wipe the device with a clean, dry cloth.
  - ✓ Do not use abrasive cleaners to clean the device.
- Do not attempt to disassemble or repair this device. Doing so will void the warranty.