
User's Manual

Table of Contents

Table of Contents

CHAPTER 1	1
INTRODUCTION.....	1
<i>Getting Started</i>	<i>2</i>
<i>Inventory</i>	<i>3</i>
<i>Safety and Maintenance</i>	<i>4</i>
<i>Checklists</i>	<i>5</i>
<i>Features.....</i>	<i>6</i>
<i>Where to Look For Information</i>	<i>6</i>
<i>Quick Start.....</i>	<i>7</i>
<i>Loading Windows.....</i>	<i>8</i>
<i>Adjusting the Volume.....</i>	<i>9</i>
<i>Adjusting the Brightness.....</i>	<i>9</i>
<i>Turning off Your Computer</i>	<i>10</i>
<i>Making a Startup Disk.....</i>	<i>10</i>
<i>Tips for New Owners.....</i>	<i>11</i>
CHAPTER 2	13
GETTING STARTED.....	13
<i>Hardware and Software</i>	<i>14</i>
<i>Front View.....</i>	<i>15</i>
<i>Rear View</i>	<i>17</i>
<i>Right View</i>	<i>17</i>
<i>Bottom View</i>	<i>18</i>
<i>LED Status Indicators</i>	<i>19</i>
<i>Power Indicators.....</i>	<i>19</i>
<i>Function Keys.....</i>	<i>20</i>
<i>Numeric Keypad.....</i>	<i>20</i>
<i>Touchpad.....</i>	<i>20</i>
<i>Connecting the Printer</i>	<i>22</i>
<i>Smart Card (Integrated Circuit Card) Reader.....</i>	<i>22</i>
<i>The Graphics System.....</i>	<i>23</i>
CHAPTER 3	28
MAKING CONNECTIONS.....	28
<i>Making Connections.....</i>	<i>29</i>
<i>Left Side Connectors</i>	<i>29</i>
<i>Right Side Connectors (Optional)</i>	<i>30</i>
<i>Rear Side Connectors.....</i>	<i>31</i>
CHAPTER 4	32
POWER MANAGEMENT	32

Table of Contents

<i>Power Management</i>	33
<i>Monitoring Battery Power</i>	34
<i>Power Saving Modes</i>	35
<i>Power Saving Tips</i>	36
<i>When to Replace the Battery</i>	37
<i>Heat Considerations</i>	37
CHAPTER 5	39
USING THE BIOS SETUP UTILITY	39
USING THE BIOS SETUP UTILITY	40
<i>Main Menu</i>	40
<i>Advanced Menu</i>	41
<i>Boot Menu</i>	42
<i>Security Menu</i>	44
<i>Exit Menu</i>	45
APPENDIX A	46
INSTANT RECOVERY SOFTWARE	46
APPENDIX B	60
FAQ & STATEMENT	60
<i>Frequently Asked Questions</i>	61
<i>Statements</i>	63
<i>European Notice</i>	64
<i>SAFETY CAUTION</i>	65
<i>Canadian Department of Communications</i>	65
<i>Battery Disposal</i>	66
<i>CAUTION FOR ADAPTER</i>	66
<i>BATTERY CAUTION</i>	66
<i>CLASS 1 LASER PRODUCT</i>	66

Chapter 1

Introduction

Getting Started

Congratulations on your purchase of the Notebook computer! Your new notebook features the most innovative advances in portable computing technology. It combines state-of-the-art ergonomics with sophisticated architecture to provide you with a personal computer that is compact, powerful, and easy to use. Designed for a wide range of general, business, and personal productivity applications, the notebook is an ideal choice for use in the office, at home, and on the road.

For maximum expandability without compromising portability, the notebook accommodates a number of modules, including Optical Drive, three USB ports, one Express card and one 4 in 1 card slot. The high capacity hard disk drive provides you with plenty of storage space for multimedia files and applications.

This Manual contains all the information you need to set up and use your new notebook. It describes all the features of the notebook in an easy-to-read yet thorough manner.

Inventory

This computer system is designed for years of productive and pleasurable computing. Use this section to keep details of your purchase. This information will be required should you need to make repairs to your notebook during the warranty period. Update this section when you add new options.

DATE OF PURCHASE: _____

PLACE OF PURCHASE: _____

DEALER'S NAME: _____

DEALER'S ADDRESS: _____

TELEPHONE: _____

E-MAIL ADDRESS/WWW: _____

CONTACT PERSON: _____

MODEL NUMBER: _____

SERIAL NUMBER: _____

BIOS VERSION: _____

The serial number is on the label (with a bar code) on the bottom side of the computer. The BIOS revision number will appear briefly on the screen after turning on the computer, before the graphic BIOS screen appears. Press the Del key to enter BIOS setup screen.

Safety and Maintenance

You can use your computer under a wide range of environmental conditions. However, to ensure long use and continued high performance, consider the following factors when setting up your computer:

- Follow all warnings and instructions noted in this documentation and in the Windows Help program.
- The first time you use your computer, we recommend that you carefully read the Making Connections section of this manual and initialize the battery to ensure optimum battery performance.
- Unplug the computer from the power outlet before cleaning. Use a damp cloth for cleaning. Do not use aerosols, solvents, or strong detergents.
- Do not use the computer near open water or other liquids. Never spill liquid onto the computer.
- Do not place the computer in an unstable location where it might slip or be knocked over. Serious damage could result from a fall.
- Slots and openings in the system cabinet are for ventilation purposes. Do not block or cover these openings or the system could overheat. Do not use or store the computer near a source of heat or dust.
- On the base or rear panel of this notebook, there is a label with information on the power requirements of this system. These requirements must be followed. If you are unsure of your local power supply, consult your dealer or local Power Company.
- Do not step on or place anything on the power cord.
- If you use the computer with an extension cord, ensure that the total ampere ratings of all the devices sharing the extension do not exceed the rating of the extension cord or the rating of the wall outlet.
- Never push foreign objects into the computer through any of the slots or openings. Dangerous voltages are present, which could cause electric shock or fire, or damage sensitive components.
- For best results, use a power strip with a built-in surge protector. Do not use inferior extension cords as this may result in damage to your computer.

- Set the computer on a flat, stable surface. To prevent damage to the computer's hard disk drive, avoid using the computer where it will be exposed to strong vibration.

Checklists

After opening the package, carefully inspect the contents. If any of the items is missing or appear damaged, contact your dealer. The shipping carton should contain the following:

STANDARD

- A notebook computer with a hard disk drive
- An internal battery
- An Optical drive
- An AC adapter with power cord

OPTIONS

The following items are normally optional, but some vendors may include them in the standard package. Some items may not be available in some countries, or some vendors may choose not to carry all the items.

- 2GB or 4GB DDRIII SODIMM memory cards

CAUTION: When purchasing any of the accessories listed above, purchase only those accessories that are approved for use with your computer. The above accessories are proprietary items. Your system vendor can obtain these approved accessories. If you use items that are not approved for use with this computer, you may cause your computer to malfunction, or to emit or receive electro-magnetic radiation in excess of local regulations. For non-proprietary accessories such as PC cards or printers, ensure that the accessory functions properly in your computer before making the purchase. Your system vendor may be able to recommend reliable brands and models.

Features

High Capacity Hard Disk Drive

The computer has a high capacity hard disk drive, to store your favorite programs and large multimedia files.

Built-in Modem/LAN Capability

A built-in 56k modem and 10/100/1000 Mbps Ethernet port allows you to access the Internet or a local area network (LAN).

LCD

Your computer has an easy-to-view WXGA or WXGA+ LCD panel.

Built-in Stereo Speakers and Microphone

The stereo speakers and internal microphone enable you to run a variety of multimedia applications.

Convenient Audio Control

The conveniently located audio control knob enables you to easily adjust the volume to the stereo speakers.

Where to Look For Information

About Your Computer

This User's Manual describes the key elements of your computer. New users can find a simple step-by-step orientation in the Quick Start section of this chapter.

Quick Start

Turning on the Computer for the First Time

1. Connect the AC adapter power cord to the AC adapter.
2. Connect the AC adapter to the DC power port on the left side of your computer.
3. Connect the AC adapter power cord to an AC outlet.
4. Slide the cover latch in the direction of the arrows to open the LCD.
5. Open the LCD panel to a comfortable viewing angle.
6. Press the power button to turn on the power.

Note: The battery is not fully charged. Allow your battery to fully charge before using it (i.e., before disconnecting AC power). Calibrating the battery before use is also highly recommended. Refer to Chapter 5, *Power Management*, for further information.

Use the touchpad to move the cursor on the screen. Move your finger across the pad to control the cursor, and press the right and left buttons beneath with your thumb. These buttons have the same functions as the right and left buttons of a standard mouse. You can also click or double-click by tapping on the touchpad.

Loading Windows

The following section is for installing the Windows operating system only. If you are installing a different operating system, please check with your vendor for installation details.

Your computer will begin loading Windows once you turn on the power. Wait a few seconds for Windows setup to load. The Windows setup will prompt you for the product key number, shown to the right:



Note: The product key is on a sticker attached to the bottom of the Notebook.

Type your name, and, if applicable, the name of your company.

Read the End User's License Agreement. Click **Next** to accept it.

Enter the product key number. You can find this on the Certificate of Authenticity on a sticker attached to the computer. Click **Finish**.

The Start Wizard will prompt you to set the date, and your local time.

After the Start Wizard updates your system settings, the Welcome to Windows screen will appear. You may disable this feature by clearing the check box labeled **show this screen each time Windows starts**.

Some software comes preloaded with Windows. New users can familiarize themselves with this software by selecting Programs from the start menu, then clicking on programs to run them.

Adjusting the Volume

You can adjust the volume with hot key combination as below:

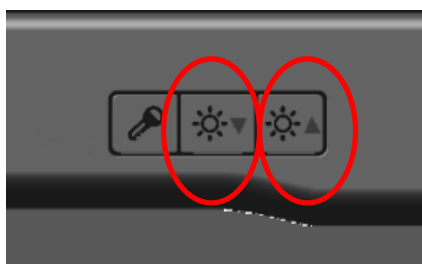
- Fn + F8 decreases the volume
- Fn + F9 increases the volume
- Fn + F10 Mute the volume

Alternatively, you can adjust the volume with the Windows volume control applet located on the taskbar.



Adjusting the Brightness

Use the following hot key to adjust the LCD panel brightness:

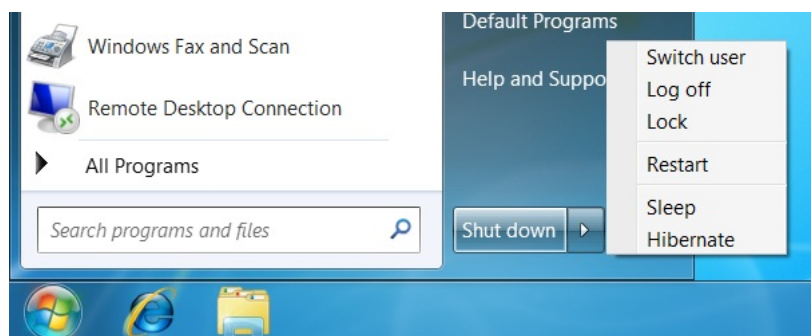


Turning off Your Computer

Turning off the computer properly is important to maintaining your computer.

1. On the Start menu.

2. Click **Shut down**



If you are going to be away from the computer for a short period, there are ways of conserving power without shutting down the system. See Chapter 4, *Power Saving Modes*, for details.



Warning: Shutting off the computer improperly may result in data loss.

Making a Startup Disk

If you have trouble starting Windows, the startup disk can be used to start your computer and fix many problems. Refer to the Windows user manual for instructions.

Tips for New Owners

Take responsibility for backup

Back up files often. Users who need to manage large amounts of data may wish to use backup devices such as USB drive. If you use your notebook as a networked workstation with system backup, talk to the system administrator about backup procedures for your notebook.

Don't leave passwords anywhere on your notebook or carrying case

Be careful when placing your notebook on an airport security conveyor belt

In most airports, security conveyor belts are safe for computers. If you are not sure, ask the security staff. You should keep a close eye on your computer. When you are in a hurry, make sure that you walk away with the correct notebook computer!

Tape your business card to the notebook and accessories

In the workplace, notebooks and accessories may often look exactly alike, leading to equipment mix-ups. Prevent such mix-ups by placing your name on your equipment.

Develop ergonomic work habits

The science of ergonomics studies the relationship between health and a suitable work environment. For more information on ergonomics, contact your nearest computer bookstore, or local library. The Internet also has information on this and other related subjects.

Never take the notebook anywhere without the carrying case

A broken screen or case can be costly to repair. Prevent accidents by carrying the computer in a suitable carrying case.

Consider using a lock

For added security, consider purchasing a Kensington lock to put into the Kensington lock hole on the back side of your computer. Use the Kensington lock to secure the computer to a desk or table.



Note: Using a computer for extended periods of time with a poor workstation setup and incorrect work habits can cause health problems.

Chapter 2

Getting Started

Hardware and Software

This chapter introduces the different components and controls of your notebook computer, including the hardware components, the software, and the audio and video systems.

Getting Started

Before you begin using your computer, read this chapter to familiarize yourself with the main components installed in the system. Lift the LCD screen and open up the computer.

Front View

1. Web CAM
2. Finger printer Reader
3. Quick button
4. LCD direction button
5. Program button
6. Slien button
7. LED Indicator
8. Brightness up
9. Brightness down
10. SAS button
11. Touchpad
12. Touchpad button
13. LCD latch
14. Handle

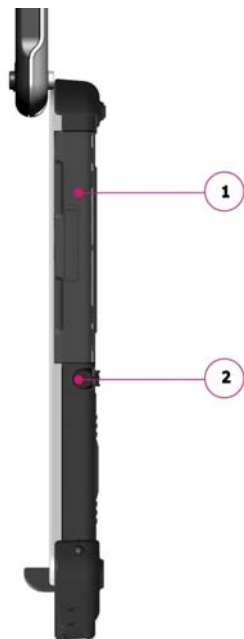


Rear View



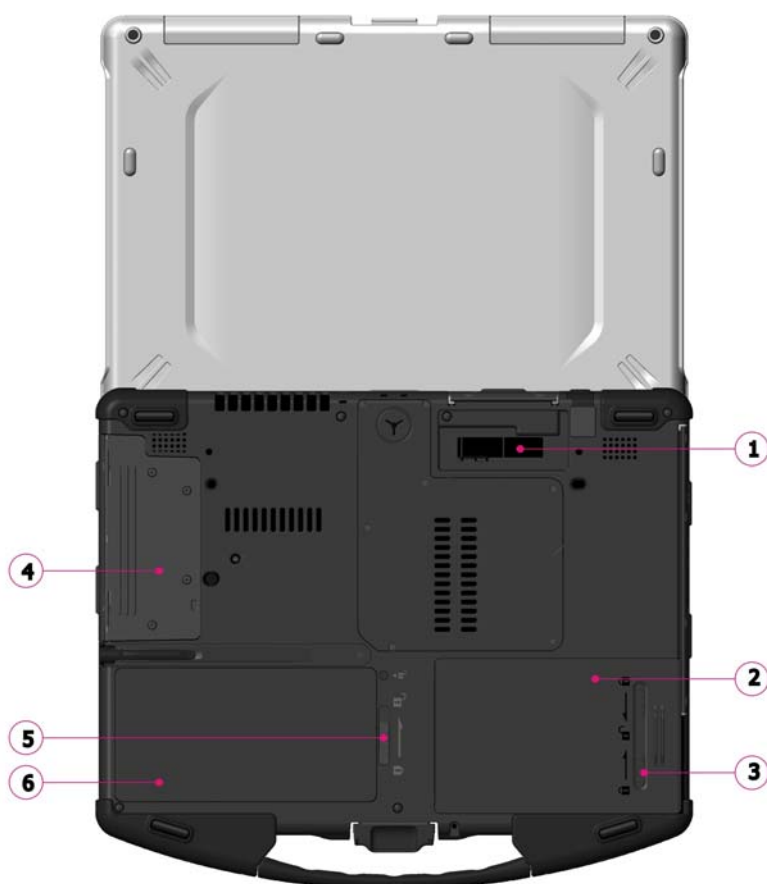
1. Kensington lock
2. VGA/Lan door
3. DC-in Jack

Right View



1. I/O door
2. Stylus

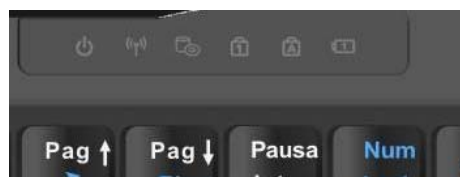
Bottom View


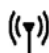



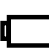


1. Docking port
2. HDD cover
3. HDD Locker
4. I/O cover
5. Battery release latch with lock function
6. Battery cover

LED Status Indicators



The status indicators in the upper left corner of the keyboard light up when a particular function of the computer is active. Each indicator is marked with a symbol.




	Power indicator	Power On/Off.
	WLAN	WLAN On/Off.
 u.4	HDD/Optical Drive	The computer is reading information from the optical drive or HDD.
	Number-Lock	The keyboard is in Num-Lock mode.
	Caps-Lock	The keyboard is in Caps-Lock mode.
	Battery	Battery status.

Power Indicators

The power indicators show which power source the system is using. The power indicators remain active and viewable even when the LCD panel is closed.

Icon	Light	Description
	Blue	Power is on and the AC adapter is in use
	Flash blue	Power is in suspend mode
	Blue	RF

Chapter 3

	Green	Fully Charged
	Orange	Battery is charging
	Flashing Orange	Low battery

Function Keys

Hold the Fn key while pressing the numbered function key.

Function key	Description
Fn + F3	Touch pad on/off
Fn + F4	Suspend Mode
Fn + F5	Toggles between LCD/CRT displays
Fn + F8	Volume decreases
Fn + F9	Volume increases
Fn + F10	Mute

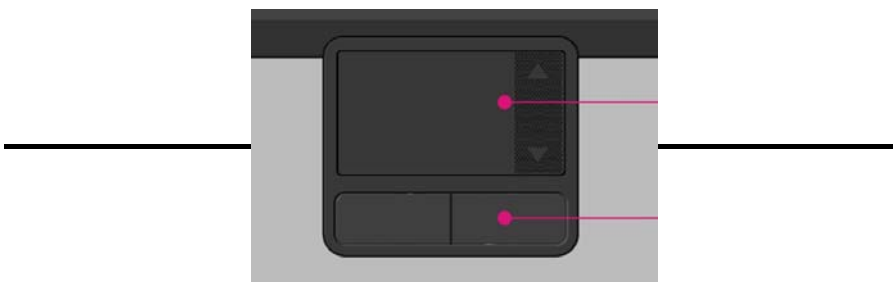
Numeric Keypad

The embedded numeric keypad consists of ten keys that make number intensive input more convenient. Press <NumLock> to enable or disable the numeric keypad.



Touchpad

The touchpad is a pressure sensitive pointing device that provides all the features of a two-button mouse. Its primary function is to move the cursor around the screen.



Touchpad

Touchpad buttons

The instructions listed below describe how to use the touchpad.

1. First, place your fingers on the keyboard in the normal typing position. The touchpad is easily accessible by moving either your left or right thumb off the space bar and on to the touchpad.
2. Gently move your thumb across the pressure-sensitive touchpad in the direction you want the cursor to move. The pad detects the change in pressure and moves the cursor in the corresponding direction.
3. The touchpad offers another method of making selections in a software program. It is called double-tapping. This function corresponds to double-clicking with a mouse. Once the cursor has been moved to the object you want to select, lightly double-tap the pressure sensitive touchpad. This double-tapping on the touchpad will select the desired item and prompt the software to perform the related operation.
4. The buttons located directly below the touchpad are the same in function as those on a two-buttoned mouse. Clicking these buttons makes selections, drags objects, or performs a variety of other functions depending on the software. To select an object, first move the pointer over the object you want to select, and then press the left button one time. The functions of these buttons are software specific.
5. Double-clicking is a common technique for selecting objects or launching programs from icons. Once you have moved the pointer over the object you wish to select, rapidly press the left button two times. This action is commonly referred to as “double-clicking” an object.

Dragging

There are two ways to drag:

- Move the pointer to the desired location then press down the left button. While still holding down the left button, move the pointer to the desired location. Release the button.

- Move the pointer to the desired location. Tap the touchpad twice quickly as if you were double-clicking; however do not remove your finger after the second tap. Move the cursor to the desired location. Lift your finger to finish dragging.

Adjust the touchpad settings by selecting Settings/Control Panel/Mouse/Buttons. These settings allow you to change the orientation of the touchpad from right-handed to left-handed and fine tune the pointer movement and timing of clicks.

Touchpad Precautions

The Touchpad is a pressure-sensitive device. If not properly cared for, it can be easily damaged. Please take note of the following precautions.

- Make sure the touchpad does not come into contact with dirt, liquids or grease.
- Do not touch the touchpad if your fingers are dirty.
- Do not rest heavy objects on the touchpad or the touchpad buttons.

Scrolling lines

If you are scrolling through a document, you may find that using the scrolling line is more restful to your hand than holding down a mouse button. The scrolling line is located on the touchpad.

Connecting the Printer

To connect a printer to your notebook via the USB port, use the supplied USB to printer adapter cable.

Smart Card (Integrated Circuit Card) Reader

A smart card is typically a “credit card” sized form factor with a small-embedded computer chip. There are different of smart cards: memory cards, processor cards and security cards.

The Graphics System

Your computer has a high-performance graphics system, which can easily handle the demands of today's multimedia computing.

Screen Controls

Brightness

Function keys can increase or decrease the brightness of the monitor.

- <Fn> + <F6> decreases the LCD panel brightness
- <Fn> + <F7> increases the LCD panel brightness

Resolution

- Click My Computer/Control Panel/Display/Settings. Click the Settings tab. The dialog box indicates the monitor resolution.
- Use the slide bar to adjust the resolution. Normally, you should use the resolution the LCD or monitor was designed for.



Note: Using a lower resolution than the screen was designed for will reduce the area of the display. Using the computer in DOS mode may produce the same effect, because it uses a 640 by 480 resolution by default. You can stretch these low resolution displays to full screen size by selecting either the Expanded Display or Display Expansion Mode features in the BIOS utility. However, the stretching may cause distortion, especially to fonts.

High Resolution with an external monitor

Higher resolution modes may be used, as long as the monitor supports them.

Connecting to an External Monitor

The notebook has a VGA monitor port to connect your computer to an external monitor.

Using the VGA monitor port

- Locate the 15-pin VGA monitor port on the right side of your notebook and connect the video signal cable from the external monitor (or the VGA adapter) to the monitor port.
- Connect the power cable from the external monitor to a power outlet and turn on the monitor.

Chapter 3

- On your notebook, click the right touchpad button on the Windows desktop to open the desktop menu. Click **Properties** to open the Display Properties window.
- In the Display Properties window, click **Advanced** in the Settings tab. Click the **Display Modes** tab.
- Under Driver mode, you can select the appropriate options to change the display to an external monitor.
- Adjustments to screen resolution and color depth can also be made in this dialog box.

Dual Displays

With Windows system, you may use an external monitor simultaneously with your notebook's LCD. You may also use the external monitor only and disable the LCD or only use the LCD. To do this you may first need to enable the multiple display settings in Windows.

1. Click taskbar **Show hidden icons**
2. Choose **Intel® Graphics Media Accelerator for Mobile**.
3. Click **Graphic Properties**
4. Click the **Settings** tab.



These options are described below.

<u>Single</u>	You can choose which device to apply as the Primary display.
----------------------	--------------------------------------------------------------

	In Single mode, the video display hot key combination is available—you can cycle the video output by pressing the Fn + F5 keys.
<u>Mirror</u>	In Mirror mode, the video display hot key combination is available—you can cycle the video output by pressing the Fn + F5 keys. If the external CRT is connected, the display on the LCD and the CRT is the same.

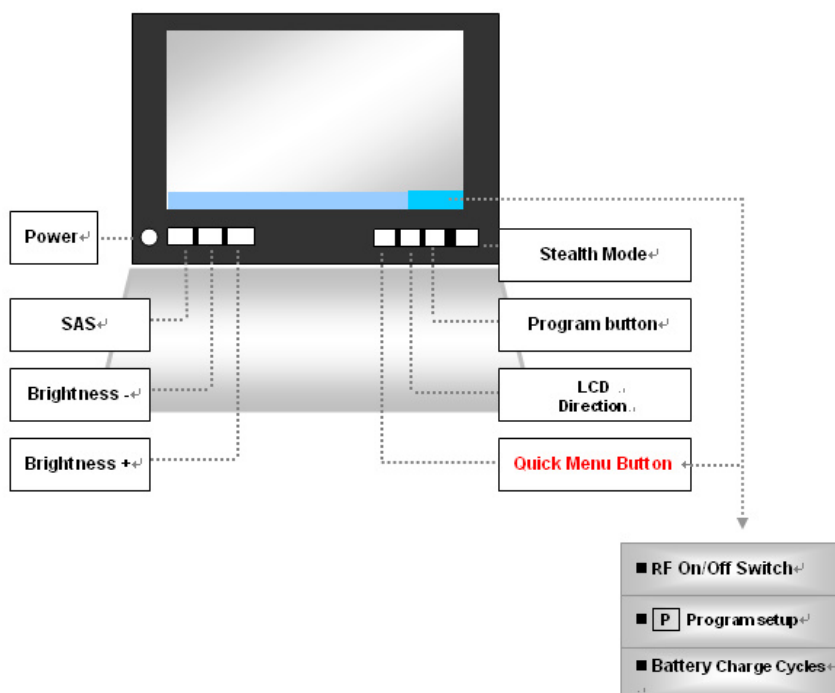


Tip: To ensure trouble-free video output, the first time you use an external monitor, change the output in the Display Properties dialog box. After successfully switching modes, you may use the video function keys.




Note: Light or dark dots may appear on the LCD due to technical limitations of LCD manufacturing. This will not effect normal operation of the LCD.


Quick Menu & OSD



1. **RF off, WLAN, WWAN, Bluetooth, GPS:** When press RF off, all of WLAN, WWAN, Bluetooth, GPS will stop working. If the user wants to use Bluetooth, for example, just press “Bluetooth” again.

Note: WLAN and WWAN will not work in the same time

2. **Program setup:** Press the icon  on the quick menu, it will popup a window that the user can choose programs. (Then, the chosen program will link to program key (program button), when the user press program button, the program can be used directly).

About program setting, use “path link” for use setting. Users can press the setting up icon  and it can show program name.

Default: suggest to set up as: Windows Explorer

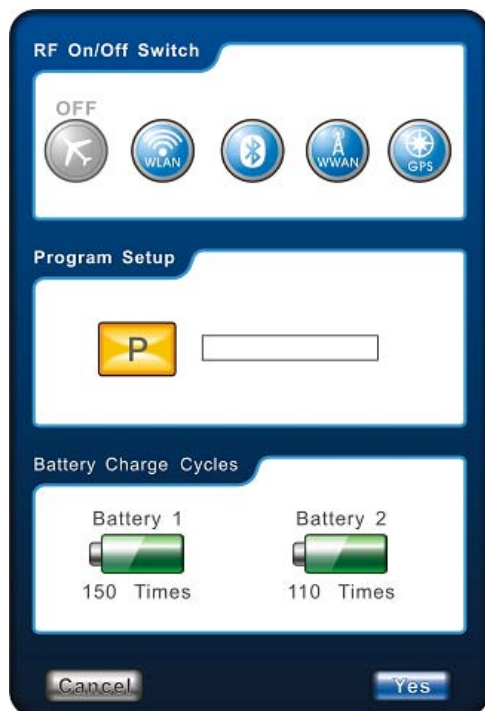
3. **Battery charge cycles:** shows charge cycles of each battery.

When battery does not exist, the battery icon will become “gray”.

OSD

Indicate the status of brightness and volume

The OSD will show up for 5 seconds after the button or key is pressed.



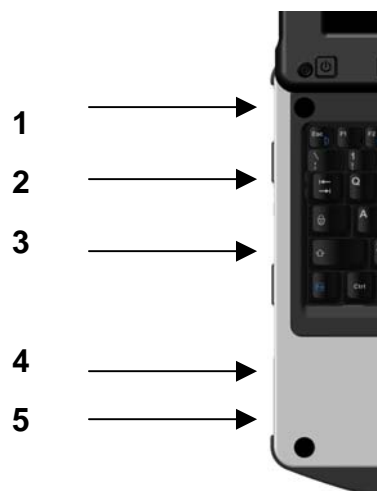
Chapter 3

Making Connections

Making Connections

Your computer is equipped with a full array of ports and connectors, including standard input/output (I/O) ports for quickly and easily adding peripheral devices such as printers, keyboards, and mice. Refer to documentation included with individual devices for details on connecting these devices to your computer. Along with the standard ports found on most computers, your computer also includes IEEE 1394 ports, modem and LAN ports, offering advanced communications technology.

Left Side Connectors



1. USB 2.0(Universal Serial Bus) Ports

The Universal Serial Bus (USB) is the latest standard for attaching monitors, input devices, scanners, and other devices to a PC. USB devices can be chained together on a single cable.

2. e-SATA/USB 2.0 combo Ports

3. SDHC Card Reader

4. Audio-out Jack

Connect a stereo headset or external speakers to this jack to listen to multimedia.

5. Microphone-in Jack

Connect a microphone to this jack to record.

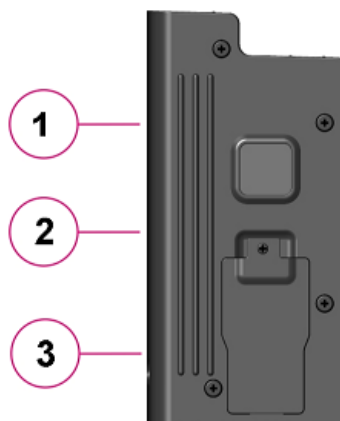
Right Side Connectors (Optional)

1. & 3. Optical USB 2.0

The Universal Serial Bus (USB) is the latest standard for attaching monitors, input devices, scanners, and other devices to a PC. USB devices can be chained together on a single cable.

2. D-sub serial port

The D-sub serial port provides the connection for RS232 interface device.



Other Optional I/O Modules

I/O module 2: USB 2.0 x1, Smart card reader x1

I/O module 3: WWAN 3G module that support HSDPA/EVDO or Gobi 2000 module or GPS mini card module, Support Ext. antenna connector

I/O module 4: Optional 2nd 2M pixel auto-focus camera module

The optional I/O module can be access for CTO purpose by removing the door on the lower cover.

Rear Side Connectors



1. VGA Out (External Video) Port

The 15-pin VGA port can be used to connect your computer to an external monitor. (See the Graphics System in chapter 2 for more information).

2. LAN RJ-45 Jack

With the built-in Ethernet LAN combo, you can make LAN connections. Connection speed is up to 1000 Mbps.

3. DC-in Jack

Connect the DC power cable from the AC adapter to this jack.

Chapter 4

**Power
Management**

Power Management

Battery Calibration

The first time you use a battery, you should calibrate it. The calibration process empties and charges the battery one time. This allows the Windows battery gauge to accurately monitor battery status. To calibrate a battery, follow these steps:

1. Plug in the AC adapter.
2. Restart the computer and when the startup screen appears, press **Del** key to enter the BIOS Setup Utility.
3. In the BIOS Setup Utility, select Advance settings, choose Battery calibration, and then press enter.

Battery Calibration will take from 4 to 8 hours, depending on how much power the battery may already contain.

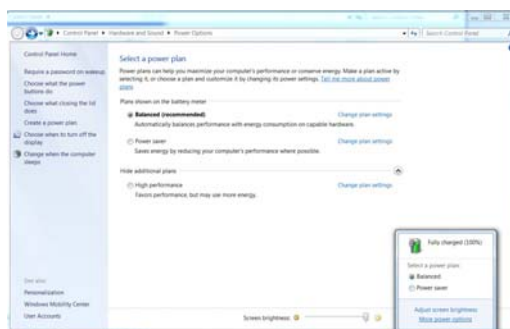


Note: For optimum performance, we recommend calibrating the battery again every three months. Each time you charge and discharge a battery, it loses a tiny part of its storage capacity, so that, over time, it will store less than its potential charge. Similarly, if you do not use the battery for a few days, it will slowly self-discharge, and when it is recharged, it will hold less than 100% of the potential charge.

Monitoring Battery Power

There are two ways to monitor how much power the battery has left.

1. Click start/Control Panel/Power Options; then click Power Meter.
2. Moving the cursor to the battery icon on the taskbar is the simplest way to check on battery power status.



If you do not see the battery icon, enable it in Start /Control Panel/Power Options. Choose the Advanced tab and click “Always show icon on the taskbar.”

Low Battery Alarms

How your computer responds to a low battery condition is set under Start/Control Panel/Power Options/Alarms.

Two different power alarms can be enabled or disabled: the Low Battery Alarm, and the Critical Battery Alarm. Use the slide bar to set the power level at which the alarms are activated. Click on the Alarm Action button to choose whether the alarm sounds, displays a message, or both.



Warning: When battery power is low, the Notebook will display a warning on the screen. Take immediate action, such as saving files or connecting to the AC adapter, or data may be lost.

When the computer alerts you that the battery is low, immediately do one of the following:

- Connect the AC power adapter
- Save your work, turn off the computer and replace the discharged battery with a charged battery (See *Changing the Battery* below).

Do not restart the computer until you have connected to an AC adapter, or replaced the discharged battery with a charged battery.

Battery Charging

When you use the AC adapter to connect your Notebook to a power outlet, the internal battery will automatically begin to recharge. While the battery is charging, the Battery Charge icon on the Indicator panel will be active. When the battery is fully charged, the Battery Charge icon will turn off.

If your computer is turned off or standby mode, a fully discharged battery will take about 3 hours to recharge.

Power Saving Modes

Adjust the default power management settings in the Power Options/Advanced dialog box in the Control panel. The Power Options Properties dialog box allows you to set different actions to take when the computer is left idle for a certain amount of time.

Suspend Mode

There are several possible settings for suspend mode, which can be selected in the Power Management dialog box: You may have the notebook standby, suspend, or you can power off the computer altogether.

Initiating Suspend Mode

There are four ways to initiate suspend mode. The settings can be adjusted in the Power Management dialog box:

- The computer will automatically enter suspend mode when not used for a set period of time.
- Selecting the Stand by button in the Shut down Windows dialog box.
- Closing the screen cover (assuming no external monitor has been connected).
- Pressing the power button (if enabled in power settings).
- Pressing the suspend function key <Fn> + <F4>.

Power Button Settings

The function of the power button can be set to Shutdown or Standby in the Power Management Properties dialog box in the Windows Control Panel. However, holding the power button down for more than four seconds will force a power off while operating under any situation, resulting in the loss of any unsaved information.

Power Saving Tips

- Avoid operating the audio and video applications when using battery power. Operating a video or audio equipment increases the computer's power requirements.
- Decreasing monitor brightness can also save power. Decrease brightness by pressing hot key "Brightness down". Increase it by pressing hot key "Brightness up".

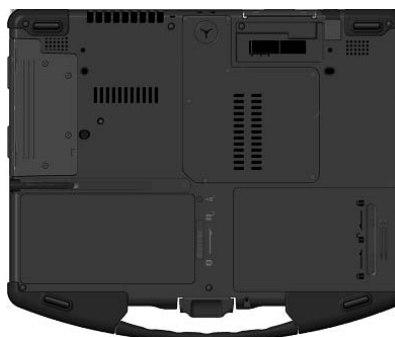
When to Replace the Battery

Over time, the battery's capacity gradually decreases. We recommend that you replace your battery when you notice that it begins to store significantly less charge.

Changing the Battery

Change the main battery pack as follows:

3. Turn off the computer.
4. Close the screen cover and turn the computer over.
5. Slide the side battery latch away from the battery. Continue to hold it until the battery is removed.
6. Remove the battery.
7. Make sure the replacement battery is properly orientated. Slide back the side battery latch then insert the battery into the battery compartment. Check that the latch locks back into position.



Heat Considerations

The computer's processor has been specially designed to consume little power, and generates very little heat. However, working in a hot environment, or working for long periods may raise the temperature. Your computer takes the following steps to lower temperature:

- The cooling fan will automatically turn on. You may feel air coming from a vent at the left side when this happens.
- If the temperature continues to rise, processor activity will be reduced. You may notice a slight loss of performance when this happens.



Warning:

1. It is better to charge the system for 16 hours or longer when users receive the system at the first time.
 2. Please remove AC adapter first, and then replace main battery after system entering into S3 mode (suspend to RAM).
 3. Please make sure all USB devices are removed when users replace main battery in S3 mode (suspend to RAM).
-

Chapter 5

Using the BIOS Setup Utility

Using the BIOS Setup Utility

Your notebook has a BIOS setup utility which allows you to configure important system settings, including settings for various optional functions of the computer. This chapter explains how to use the BIOS setup utility.

BIOS Setup Menu

The setup uses a menu interface to allow the user to configure their system. The features are

MAIN: Allows the user to specify system time and system date and the system overview.

Advanced: Allows the user to set BIOS function .

Boot: Allow the user to set the boot sequence

Security: Allows the user to set the password for system.

Exit: Exit option

Main Menu

Aptio SETUP UTILITY

Main	Advanced	Boot	Security	Exit
BIOS Information				
BIOS Version				R1.00
Build Date				01/09/2010
EC Version				3.32.0
ME Version				6.1.1.10.1052
UUID				00020003000400050006000700080009
Serial Number				1234567890
Processor Information				
Type				Intel(R) Core(TM) i5 CPU U 540 @ 1.20GHz
Speed				1197MHz
Memory Information				
Total Memory				4096 MB (DDR3 800)
System Date				[Sat 02/20/2010]
System Time				[19:14:50]
Version 2.00.1201. Copyright © 2009 American Megatrends, Inc.				

System Time (hh/mm/ss) :**System Date (week mm/dd/yyyy) :**

Allows the user to set the time and date.

The Time is displayed in 24 hours format.

The Date can be set from January 1st, 1980 to December 31, 2099

The values set in these two fields take effect immediately.

Advanced Menu**Aptio SETUP UTILITY**

Main Advanced Boot Security Exit	
Advanced Setting	Options (1) IDE Mode. (2) AHCI Mode.
SATA Mode [AHCI Mode]	←→ Select Screen
FAN Calibration	↑↓ Select Item
Battery Calibration	+ - Change Option
Wake on LAN from S4/S5 mode [Disable]	F1 General Help
Bluetooth [Disable]	F10 Save and Exit
WLAN [Disable]	ESC Exit
WWAN [Disable]	
GPS [Disable]	
Trusted Computing	
Version 2.00.1201. Copyright © 2009 American Megatrends, Inc.	

FAN Calibration :

Allows user to Start Fan Learning.

[Enter]

Default is "Enter".

Battery Calibration:

Allows user to Start Battery Learning.

[Enter]

Default is "Enter".

Boot Menu

Aptio SETUP UTILITY

Main Advanced Boot Security Exit	
Boot Option Priorities	Set the system boot order
Boot Option #1 [P0: TOSHIBA MK50..]	←→ Select Screen
Boot Option #2 [Built-in EFI Shell]	↑↓ Select Item
Boot Option #3 [Realtek PXE B02..]	+ - Change Option
Hard Drive BBS Priorities	F1 General Help
Network Device BBS Priorities	F10 Save and Exit
	ESC Exit
Version 2.00.1201. Copyright © 2009 American Megatrends, Inc.	

Boot Option #1

Allow the user to select 1st boot device.

[HDD]

[CD/DVD]

[Network]

[Disabled]

Default is "HDD".

Boot Option #2

Allow the user to select 2nd boot device.

[HDD]

[CD/DVD]

[Network]

[Disabled]

Default is "CD/DVD".

Boot Option #3

Allow the user to select 3rd boot device.

[HDD]

[CD/DVD]

[Network]

[Disabled]

Default is "Network".

Security Menu

Aptio SETUP UTILITY

Main Advanced Boot Security Exit	
<p>Password Description</p> <p>If ONLY the Administrator's password is set, Then this only limits access to Setup and is Only asked for when entering Setup</p> <p>If ONLY the User's password and must be entered to Boot or enter Setup. In Setup the User will Have Administrator rights</p> <p>Administrator Password</p> <p>User Password</p>	<p>Set Setup Administrator Password</p> <p>←→ Select Screen</p> <p>↑↓ Select Item</p> <p>Enter Change</p> <p>F1 General Help</p> <p>F10 Save and Exit</p> <p>ESC Exit</p>
Version 2.00.1201. Copyright © 2009 American Megatrends, Inc.	

Exit Menu

BIOS SETUP UTILITY

Main Advanced Boot Security Exit	
Exit Options	Exit system setup after saving the changes.
Save Changes and Exit	F10 key can be used for this operation.
Discard changes and Exit	
Discard Changes	←→ Select Screen
Load Optimal Defaults	↑↓ Select Item
	Enter Go To Sub Screen
	F1 General Help
	F10 Save and Exit
	ESC Exit
V02.65 ©Copyright 1985-2004, American Megatrends, Inc.	

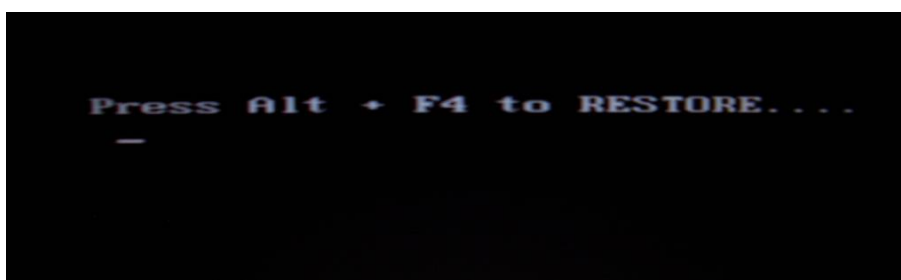
Appendix A

Instant Recovery Software

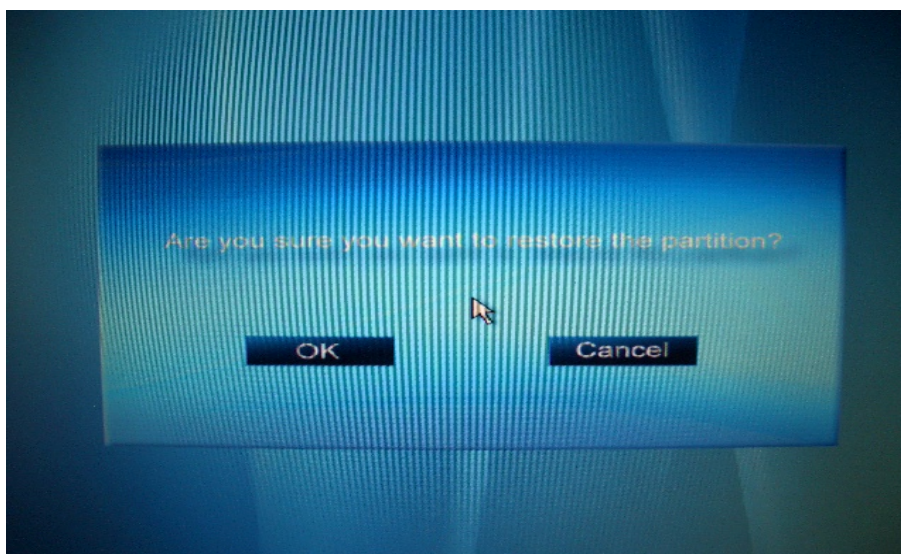
Instant Recovery Software

No need to locate a recovery CD to restore your software settings, it is already pre-installed on your notebook hard drive. Simply follow the steps below and restore your notebook to the original factory settings.

1. Press power button boot System , then press Alt+F4 to start the recovery

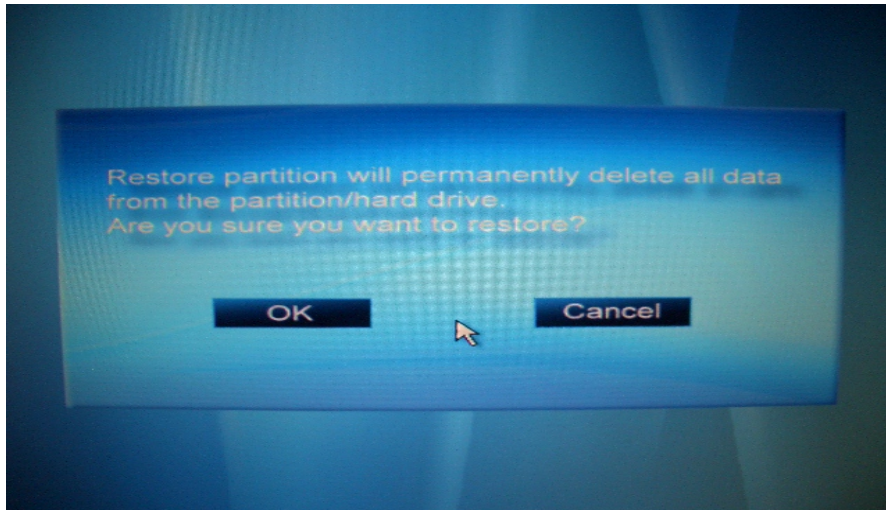


2. "Are you sure you want to restore the partition?" Please click "OK"

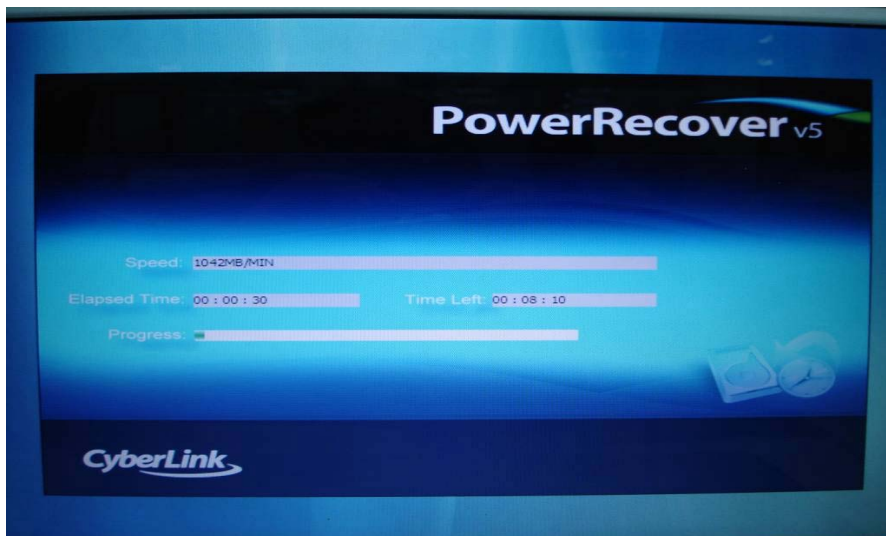


Appendix A

3. Warning message for double confirmation , please click “OK”



4. Start to recover system



5. Restore operation completed, please click “Quit” to finish all of the recovery procedure



Appendix B
FAQ & Statement

Frequently Asked Questions

Q: My screen seems to time out too quickly. I have to constantly hit a key or move the mouse in order to bring it back. How can I adjust the screen time-out?

A: This is part of Windows Power Management. Access Power Management by clicking on **Start / Settings / Control Panel / Power Management**. Adjust the display time-out by selecting a time next to the Turn off monitor option. You may also select different time-out values for adapter and battery power states.

Q: I've heard that cleaning up and rearranging files on the hard drive will improve the startup speed of my programs. How do I do this?

A: Hard disk maintenance can improve the startup speed of programs. This maintenance includes deleting unnecessary files, and defragmenting, which rearranges data into more efficient groupings. Windows includes utilities for performing these maintenance tasks. Run Disk Cleanup to remove unnecessary files, and Disk Defragmenter to defragment the hard drive. For more information, refer to Windows documentation.

Q: What kind of external microphone can I use with my notebook computer?

A: You will need to use a self-amplifying microphone.

Q: There is feedback noise coming from my speakers. What can I do?

A: Double click on the Speaker icon on the task bar. Then, under Microphone Balance, check the Mute box.

Q: Because of a software problem, I was unable to shut down power normally. I pressed the power button to force a power off, but it didn't work. How can I force a power off?

A: Make sure you press the power button for at least 4 seconds. Normally, this will force a power off. If this does not work, you can

shut down the computer by inserting a needle into the reset button pinhole. (The reset button locates on the computer bottom side.)

Q: Why can't I charge the battery of my portable computer after it was out of use for some time?

A: After portable computers have not been used for a long time (more than one month), the batteries will go into the low voltage protection mode due to data back-ups and natural electrical discharge. At that point, restoring normal voltage will require slow charging over a period of several hours. Calibration can be performed after the battery has returned to a normal condition.

Q: My computer alerts "CMOS Battery Low", what can I do?

A: If you keep your computer in no power situation (unplug the computer from the power outlet and remove battery at the same) over 45 days, your data in CMOS will be lost.

Please reconfigure your CMOS by following steps:

1. Press **DEL or F2** to enter the BIOS setup utility.
2. Select "**Restore Defaults?**" When you see the following prompt, choose <Yes> and then press <Enter>.

Load Optimized Defaults? [Yes] [No]

3. Select "**Save Changes and Exit**". When you see the following prompt, choose <Yes> and then press <Enter> to restart your computer.

Save configuration and exit? [Yes] [No]

Statements

Federal Communications Commission Statement

This equipment has been tested and found to comply with the limits for a Class B digital device, pursuant to Part 15 of the FCC Rules. These limits are designed to provide reasonable protection against harmful interference in a residential installation. This equipment generates, uses, and can radiate radio frequency energy and, if not installed and used in accordance with the instructions, may cause harmful interference to radio communications. However, there is no guarantee that interference will not occur in a particular installation. If this equipment does cause harmful interference to radio or television reception, which can be determined by turning the equipment off and on, the user is encouraged to try to correct the interference by one or more of the following measures:

- Reorient or relocate the receiving antenna.

Increase the separation between the equipment and the receiver.

Connect the equipment into an outlet on a circuit different from that to which the receiver is connected.

Consult the dealer or an experienced radio/TV technician for help.

Shielded interconnect cables and shielded AC power cable must be employed with this equipment to insure compliance with the pertinent RF emission limits governing this device. Changes or modifications not expressly approved by the system's manufacturer could void the user's authority to operate the equipment.

RF exposure warning

This equipment must be installed and operated in accordance with provided instructions and must not be co-located or operating in conjunction with any other antenna or transmitter. End-users and installers must be provide with antenna installation instructions and transmitter operating conditions for satisfying RF exposure compliance.

SAR Value: 0.150 W/kg

Industry Canada Warnings

Operation is subject to the following two conditions: (1) this device may not cause interference, and (2) this device must accept any interference, including interference that may cause undesired operation of the device.

European Notice

Products with the CE Marking comply with both the EMC Directive (89/336/EEC) and the Low Voltage Directive (73/23/EEC) issued by the Commission of the European Community.

Compliance with these directives implies conformity to the following European Norms:

- **EN 55022** (CISPR 22) Radio Frequency Interference
- **EN 55024** (EN61000-4-2, EN61000-4-3, EN61000-4-4, EN61000-4-5, EN61000-4-6, EN61000-4-8, EN61000-4-11, EN61000-3-2, EN61000-3-3) Generic Immunity Standard
- **EN 60950-1** (IEC 60950-1) Product Safety

R&TTE (CE) MANUAL REGULATORY REQUIREMENT (WLAN - IEEE 802.11b/g)

- **802.11b Restrictions:**
- European standards dictate maximum radiated transmit power of 100mW EIRP and frequency range 2.400-2.4835GHz.
- In France, the equipment must be restricted to the 2.4465-2.4835GHz frequency range and must be restricted to indoor use."

CE Declaration of Conformity

CE 0984 !

Is herewith confirmed to comply with the requirements set out in the Council Directive on the Approximation of the Laws of the Member States relating to Electromagnetic Compatibility (89/336/EEC), Low-voltage Directive (73/23/EEC) and the Amendment Directive (93/68/EEC), the procedures given in European Council Directive 99/5/EC and 89/336/EEC.

The equipment was passed. The test was performed according to the following European standards.

- EN 300 328 V1.7.1 (2006-05)
- EN 301 489-1 V.1.4.1 (2005-09) / EN 301 489-17 V.1.2.1 (2002-04)
- EN 50371:2002
- EN 60950-1:2001

SAFETY CAUTION

To reduce the risk of fire, use only No. 26 AWG or larger telecommunication line cord.

IMPORTANT SAFETY INSTRUCTIONS

When using your telephone equipment, basic safety precautions should always be followed to reduce the risk of fire, electric shock and injury to persons, including the following:

Do not use this product near water, for example, near a bathtub, wash bowl, kitchen sink or laundry tub, in a wet basement or near a swimming pool.

Avoid using a telephone (other than a cordless type) during an electrical storm. There may be a remote risk of electric shock from lightning.

Do not use the telephone to report a gas leak in the vicinity of the leak.

Use only the power cord and batteries indicated in this manual. Do not dispose of batteries in a fire. They may explode. Check with local codes for possible special disposal instructions.

Canadian Department of Communications

This class B digital apparatus meets all requirements of the Canadian Interference-causing Equipment Regulations.

Battery Disposal

THIS PRODUCT CONTAINS A LITHIUM-ION OR NICKEL-METAL HYDRIDE BATTERY. IT MUST BE DISPOSED OF PROPERLY. CONTACT LOCAL ENVIRONMENTAL AGENCIES FOR INFORMATION ON RECYCLING AND DISPOSAL PLANS IN YOUR AREA.

CAUTION FOR ADAPTER

THIS NOTEBOOK COMPUTER IS FOR USE WITH DEDICATED AC Adapter.

BATTERY CAUTION

DANGER OF EXPLOSION IF BATTERY IS INCORRECTLY REPLACED.

REPLACE ONLY WITH THE SAME OR EQUIVALENT TYPE RECOMMENDED BY THE MANUFACTURER. DISPOSE OF USED BATTERIES ACCORDING TO THE MANUFACTURER'S INSTRUCTIONS.

CLASS 1 LASER PRODUCT

LASERSCHUTZKLASSE 1 PRODUKT TO EN60825

CAUTION: THIS APPLIANCE CONTAINS A LASER SYSTEM AND IS CLASSIFIED AS A "CLASS 1 LASER PRODUCT." TO USE THIS MODEL PROPERLY, READ THE INSTRUCTION MANUAL CAREFULLY AND KEEP THIS MANUAL FOR FUTURE REFERENCE. IN CASE OF ANY TROUBLE WITH THIS MODEL, PLEASE CONTACT YOUR NEAREST "AUTHORIZED SERVICE STATION." TO PREVENT DIRECT EXPOSURE TO THE LASER BEAM, DO NOT TRY TO OPEN THIS ENCLOSURE.

ANNEX IV

Symbol for the marking of electrical and electronic equipment

The symbol indicating separate collection for electrical and electronic equipment consists of the crossed-out wheeled bin, as shown below. The symbol must be printed visibly, legibly and indelibly.

