

# WS4936/WS4936EU (433MHz)/WS8936 (868MHz) Series

## Wireless Smoke Detector

### Installation and Operating Instructions

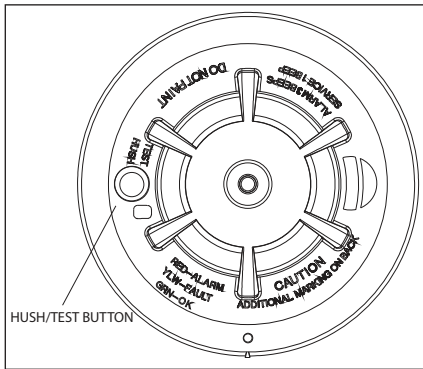
Read this instruction sheet thoroughly before installation and use of the WS4936 / WS4936EU/ WS8916

#### Introduction

The WS4936 / WS4936EU / WS8936 is a wireless photoelectric smoke detector with a fixed temperature and rate of rise heat detector, and an internal piezoelectric alarm. Four versions are available: US version (UL), Canadian version (ULC), International version (EU), and Australian version (AUS).

**NOTE:** Heat detection based on rate of rise has not been investigated by UL/ULC.

**NOTE:** AU and EU versions do not include a fixed temperature heat alarm, but **DO** include a rate of rise alarm.



#### Operation

Approximately every 7 to 8 seconds the unit tests for a smoke or heat alarm condition. During this sequence the unit also performs self diagnostics, and checks for tampers and faults. During normal operation the green LED will flash every 12 seconds and the sounder will not sound.

#### Smoke Alarm

The smoke detector will go into alarm when the signal level exceeds the "alarm" threshold and automatically restore when the signal level falls below the alarm "restore" threshold. During an alarm the LED will flash 1/second and the sounder will sound the evacuation temporal pattern (UL, EU, ULC).

#### Alarm Silencing

This smoke alarm is provided with an automatically resettable alarm silencing feature. When the sensor is in alarm, by pressing the Test/Silence/Reset button it will silence the local annunciation of the alarm and transmit an alarm restoral event to the control panel. The LED will flash every 8 seconds (for up to 10 minutes) to indicate the alarm has been silenced.

The flashing LED will stop when the unit returns to normal operation. The alarm silence feature has a fixed time setting that desensitizes the smoke alarm for 8 minutes.

Alarm silencing does not disable the smoke alarm but rather reduces its smoke sensitivity. Following the silenced period the smoke alarm restores automatically to its intended operation. If smoke around the unit is dense enough to suggest a potentially dangerous situation, it will stay in alarm, or may return to the alarm state quickly.

#### Detector Trouble

When the detector has a general fault, the yellow LED blinks once every four seconds and there is a chirp every 48 seconds. After 12 hours, the panel will display a loss of supervision message.

Status	LEDs	Sounder (do not pulse the sounder and LED concurrently)
Normal	Green flash every 12 seconds	Off
Heat Alarm	Red flash every 1 second	ANSI S3.41 temporal 3
Heat Test	Red flash every 1 second	ANSI S3.41 temporal 3
Smoke Alarm	Red flash every 1 second	ANSI S3.41 temporal 3 (press button to hush for 5-10 minutes)
Smoke Test	Red flash every 1 second	ANSI S3.41 temporal 3 (press button to hush for 5-10 minutes)
Test Alarm	Red flash every 1 second	ANSI S3.41 temporal 3
Freeze Warning	3 yellow flashes every 4 seconds	Off
Detector Trouble	Yellow flash every 4 seconds	One chirp every 48 seconds
Low Battery	Yellow flash every 12 seconds	One chirp every 48 seconds (press button to hush for 12 hours)
Detector Dirty	Yellow flash every 8 seconds	One chirp every 48 seconds
Power-up	Red, yellow, green, flash sequence	One chirp at the end of the power-up sequence
Tamper	Red, yellow, green flash sequence every 12 seconds	Off

Table 1: Detector and Status Indication



29009523R001

## Detector Dirty Feature

When the detector has been contaminated, the yellow LED blinks once every 8 seconds and there is a chirp every 48 seconds. Refer to the MAINTENANCE section for cleaning the detector. After 12 hours, the panel will display a loss of supervision message.

## Heat Alarm

The heat detector (UL/ULC versions only) will go into alarm when the heat signal level exceeds the heat alarm threshold (135°F/57°C); and will automatically restore when the heat signal level falls below the heat alarm threshold (restore). The detector will also go into heat alarm if there is a rapid increase in the temperature over a short period of time. During an alarm the LED will flash 1/second and the sounder will sound the evacuation temporal pattern (UL, EU) or continuous beeps (ULC).

## Tamper

The removal of the detector from the mounting plate initiates a "tamper" transmission. The tamper condition is restored after the detector is mounted on the plate.

## Wireless Transmissions

A supervisory message is transmitted at 64 minute intervals (12 minutes in EU model) to the control panel. If the signal is not received the control panel determines that the detector is missing.

The detector transmits the following:

- **Alarm / Alarm Restore** - (heat or smoke alarm). Transmitted at time of occurrence.
- **Tamper / Tamper Restore** - (tamper switch activated) 10 second maximum delay on restore before transmission.
- **Low Battery** - (battery voltage falls below threshold). Battery voltage is tested & transmitted at the time of a supervisory or other transmissions.
- **Trouble** - (detector fault or sensor compensation limit reached). Troubles are transmitted at the time of occurrence (one trouble per supervisory interval).

## Batteries

**NOTE:** The batteries must be replaced by service persons only.

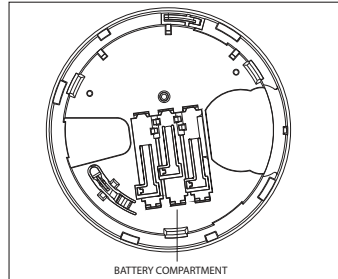
The wireless smoke heat alarm is powered by 3 AAA Duracell Procell PC2400 or 3 AAA Energizer E92 batteries (included). The detector regularly checks for a low battery. If a low battery is detected, the transmitter sends a low battery message to the control panel, which displays the detector's ID at low battery. In addition, the yellow LED of the detector will blink every 12 seconds. The detector's sounder will chirp every 48 seconds (yellow LED continues to blink) until the batteries are replaced. Pressing the hush button will silence the chirps for 12 hours, if no other trouble conditions exist. The batteries should be replaced WHEN the chirps begin. Be sure to replace the batteries with fresh ones.

## Battery Installation and Replacement

To replace batteries:

1. Remove the detector from its mounting base by twisting the detector counterclockwise. Remove and dispose of the batteries according to local regulations.
2. To ensure a proper power-down sequence, wait a minimum of 20 seconds before installing new batteries.
3. Install 3 new AAA batteries (available from a local Duracell or Energizer dealer) in the battery compartment. If

the batteries are incorrectly inserted, please remove them carefully with a non-conductive tool and correctly re-insert them.



4. Re-install the detector on its mounting base by turning the detector clockwise until the mating marks align.
5. After the power-up sequence, the green LED should blink once every 12 seconds to indicate normal operation. If the batteries are not installed correctly, the detector will not operate and the batteries may be damaged. If the detector does not power up, check that the batteries are installed correctly and fully charged.
6. Test the detector (as described later).

CONSTANT EXPOSURES TO HIGH OR LOW TEMPERATURES OR HIGH HUMIDITY MAY REDUCE BATTERY LIFE.

## Installation Instructions

The WS4936 / WS4936EU / WS8936 Series wireless smoke detector shall be installed and used within an environment that provides the pollution degree max 2 and overvoltages category II in NON HAZARDOUS LOCATIONS, indoor only. The equipment is designed to be installed by SERVICE PERSONS only; (SERVICE PERSON is defined as a person having the appropriate technical training and experience necessary to be aware of hazards to which that person may be exposed in performing a task and of measures to minimize the risks to that person or other persons.)

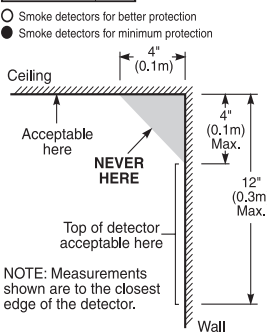
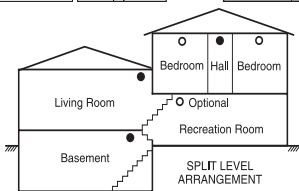
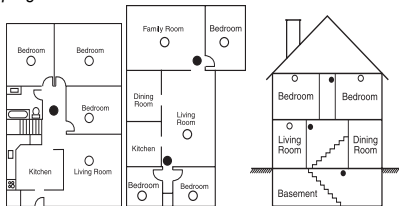
### 1. Smoke Detector Placement

On smooth ceilings, detectors may be spaced 9.1m (30 feet) apart as a guide. Other spacing may be required depending on ceiling height, air movement, the presence of joists, uninsulated ceilings, etc. Consult National Fire Alarm Code NFPA 72 Chapter 11, CANULC-S553-02 or other appropriate national standards for installation recommendations.

- Do **NOT** locate smoke detectors at the top of peaked or gabled ceilings; the dead air space in these locations may prevent the unit from detecting smoke. Avoid areas with turbulent air flow, such as near doors, fans or windows. Rapid air movement around the detector may prevent smoke from entering the unit.
- Do **NOT** locate detectors in areas of high humidity.
- Do **NOT** locate detectors in areas where the temperature rises above 38°C (100°F) or falls below 5°C (41°F).
- Do **NOT** locate detectors directly above a sink, stove or oven.
- Do **NOT** locate detectors within 5 feet (1.5m) of any cooking appliance.

Install Smoke detectors in accordance with NFPA 72, Chapter 11.

"Smoke detectors shall be installed outside of each sleeping area in the immediate vicinity of the bedrooms and on each additional story of the family living unit, including basements and excluding crawl spaces and unfinished attics. In new construction, a smoke detector also shall be installed in each sleeping room."



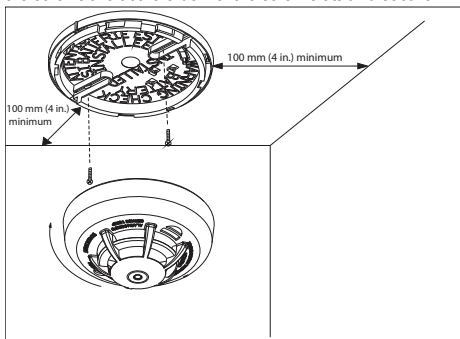
## 2. Mount Smoke Detector Backplate

**NOTE:** These alarm devices should only be installed by a competent engineer / technician.

This device should not be used with a guard.

Once a suitable location is found, mount the detector backplate.

Install the mounting base on the ceiling or on the wall (if local ordinances permit) using screw locations as required. Use the two screws and anchors provided. Maneuver the base so the screws are at the elbow of the screw slots and secure.



## 3. Mounting

Fit the detector inside the base by aligning it over the base (detector's alignment notch should be slightly offset from the mounting base tamper release tab) then turn the detector clockwise until it clicks in place.

## 4. Test Unit

**NOTE:** The central monitoring station (if used) should be notified prior to the test being generated. This will prevent a false alarm and an unnecessary response from the central monitoring station.

Initiate test by pressing the test button for 5 seconds minimum. Alarm activation is indicated by the flashing LED, the sounder, and transmission of the alarm signal to the control panel. The detector restores to normal when the test button is released.

**NOTE:** Allow a minimum of 20 seconds after power up and , after test, alarm or tamper restore activations. Do not use test button when smoke is present.

**NOTE:** If the detector is in one of the following states when a test is initiated; it will not enter an alarm state.

- Tamper, (detector not installed on mounting plate)
- Compensation Trouble
- Other internal faults that could prevent a smoke or heat alarm

## 5. Device Enrollment

The 6-digit serial number located on the back of the smoke detector housing must be enrolled into the alarm control panel with Installer programming. Refer to the receiver Installation Manual for details. For placement tests remove detector from backplate for one second (tamper) then reattach. Wait at least 30 seconds for test result before activating again.

## Owner's Instructions

### Fire Safety In The Home

Most fires occur in the home, and to minimize this danger, it is recommended that a household fire safety audit be conducted and a family escape plan be developed.

### Household Fire Safety Audit

1. Are all electrical appliances and outlets in safe condition? Check for frayed cords, overloaded lighting circuits, etc. If you are uncertain about the condition of your electrical appliances or household service, have a professional evaluation.
2. Are all flammable liquids safely stored in closed containers, and in a cool and well ventilated area? Cleaning the unit with flammable liquids should be avoided.
3. Are hazardous materials (i.e., matches) out of the reach of children?
4. Are furnaces and wood burning appliances properly installed, clean, and in good working order? If in doubt, have a professional evaluation.

### Family Escape Planning

There is often very little time between the detection of a fire and the time it becomes deadly. Because of this, it is very important that a family escape plan be developed and rehearsed.

- Every family member should participate in the escape plan.
- Study the possible escape routes from each location within the house. Since many fires occur at night, special

attention should be given to the escape routes from sleeping quarters.

- It is essential that escape from a bedroom be possible without opening the interior door. Consider the following when making your escape plans:
- Ensure that doors and windows that open to the outside are easily opened. Ensure that they are not painted shut and that the locking mechanisms operate smoothly.
- If opening or using the exit is too difficult for children, the elderly or handicapped, plans for their rescue should be developed. This plan includes making sure that those who are to perform the rescue can promptly hear the fire warning signal.
- If the exit is above the ground level, an approved fire ladder or rope should be provided, as well as training in its use.
- Exits on the ground level should be kept clear. Be sure to remove snow from exterior patio doors in the winter and that outdoor furniture or equipment does not block exits.
- The family should have a predetermined assembly point where everyone can be accounted for; for example, across the street or at a neighbor's house.
- Once everyone is out of the house, call the Fire Department.
- A good plan emphasizes a quick escape. Do not investigate first or attempt to fight the fire, and do not attempt to rescue belongings or valuables as this takes up time. Once outside, do not re-enter the house; wait for the Fire Department.
- Write the plan down and rehearse it frequently so that should an emergency ever arise, everyone will know what to do. Revise the plan as conditions change; for example, when there are more or fewer family members in the home or if there are changes to the house.
- Make sure your fire warning system is operational by conducting weekly tests. If you are unsure about system operation, contact your smoke detector installer or dealer.
- DSC recommends that you contact your local Fire Department and request further information on home fire safety and escape planning. If available, have your local fire prevention officer conduct an in-house fire safety inspection.

## Testing Your Smoke Detector

*Follow the test procedure described here or contact your smoke detector dealer or installer for testing instructions. DSC recommends that you test the entire alarm system at least once a week to verify the operation of all system functions.*

### Smoke Detector Unit Test

Initiate test by pressing the test button for 5 seconds (min.), the sounder makes clicking noises during this time. Press the button until the unit alarm sounds, an alarm should be sent to the control panel. When the button is released, the alarm should cease. If this does not occur, ensure batteries are the correct type, in good condition and are installed correctly (see 3. Install Batteries in the Installation Instructions section).

Upon completing the functional testing of the smoke detector, check the unit's sensing chamber to ensure proper operation. To test the sensing chamber, wave a lit cotton wick or punk stick around the outside of the unit until a generous amount of smoke enters the sensing chamber or the unit alarms. If the smoke detector does not function properly, call your smoke detector installer or dealer for service.

## Owner's Maintenance

The smoke detector is designed to require minimum maintenance. If the case becomes dusty, vacuum with a small brush attachment. If the case is greasy, wipe the case gently with a soft cloth slightly dampened with soapy water.

**Never disassemble the smoke detector; there are no user serviceable parts inside the unit. You may only remove detector from backplate to replace batteries if not serviced by installer. When replacing the batteries, follow the instructions specified within the Installation Instructions, Item 3 Install Batteries.**

**Never paint the unit. Paint may prevent smoke from entering the unit. If you are planning renovations or repainting, contact your installer and ask that the unit be temporarily removed until work is complete.**

If the unit is located in an area where it is exposed to high levels of dust or insects and causes false alarms, it may require service; contact your smoke detector installer or dealer.

Testing and maintenance procedures shall be in accordance with CAN/ULC-S552-02.

## Specifications

- Regulatory Listing: UL268/ULC-S531
- Diameter: 5 in (125 mm)
- Height: 2.5 in (63 mm)
- Weight (including battery): 8.75 oz (243 g)
- Color: White
- Spacing rating: 70 ft (21.3 m)
- Sensitivity: 1.26 - 2.39%/foot obscuration
  - Alarm Sensitivity (threshold) EU: complies with EN14604
  - Alarm Sensitivity (threshold) UL: 3.0±0.8%/ft obscuration, ULC: 2.0±0.5 %/ft obscuration
- Audible Signal (ANSI Temporal 3): 85dBA min. in alarm
- Sounder Alarm Pattern UL, ULC, EU: evacuation temporal pattern
- Operating Temperature: 40° to 100°F (4.4° to 37.8°C)
- Operating Temperature with Heat Detector: 32°-100°F (0°-37.8°C)
- Operating Temperature for Smoke Alarm (Australian version): 41°-113°F (5°-45°C)
- Heat Alarm: 135°F (57°C)
- Humidity: 15%-90% RH, non-condensing
- Approved Batteries: 3 AAA Energizer E92 or Duracell Procell PC2400
- Alarm Silencing (ULC Model) 8 minutes automatically resettable
- Supervisory Transmission Frequency UL, ULC: 64 min. intervals
- Supervisory Transmission Frequency EU: 12 minute intervals
- Low Battery Detection: Low battery 14 days remaining

## Limited Warranty

Digital Security Controls warrants that for a period of twelve months from the date of purchase, the product shall be free of defects in materials and workmanship under normal use and that in fulfillment of any breach of such warranty, Digital Security Controls shall, at its option, repair or replace the defective equipment upon return of the equipment to its repair depot. This warranty applies only to defects in parts and workmanship and not to damage incurred in shipping or handling, or damage due to causes beyond the control of Digital Security Controls such as lightning, excessive voltage, mechanical shock, water damage, or damage arising out of abuse, alteration or improper application of the equipment.

The foregoing warranty shall apply only to the original buyer, and is and shall be in lieu of any and all other warranties, whether expressed or implied and of all other obligations or liabilities on the part of Digital Security Controls. Digital Security

Controls neither assumes responsibility nor authorizes any other person purporting to act on its behalf to modify or to change this warranty, nor to assume for it any other warranty or liability concerning this product.

In no event shall Digital Security Controls be liable for any direct, indirect or consequential damages, loss of anticipated profits, loss of time or any other losses incurred by the buyer in connection with the purchase, installation or operation or failure of this product.

**Smoke Detectors:** Smoke detectors that are a part of this system may not properly alert occupants of a fire for a number of reasons, some of which follow. The smoke detectors may have been improperly installed or positioned. Smoke may not be able to reach the smoke detectors, such as when the fire is in a chimney, walls or roofs, or on the other side of closed doors. Smoke detectors may not detect smoke from fires on another level of the residence or building.

Every fire is different in the amount of smoke produced and the rate of burning. Smoke detectors cannot sense all types of fires equally well. Smoke detectors may not provide timely warning of fires caused by carelessness or safety hazards such as smoking in bed, violent explosions, escaping gas, improper storage of flammable materials, overloaded electrical circuits, children playing with matches or arson.

Even if the smoke detector operates as intended, there may be circumstances when there is insufficient warning to allow all occupants to escape in time to avoid injury or death.

**Warning:** Digital Security Controls recommends that the entire system be completely tested on a regular basis. However, despite frequent testing, and due to, but not limited to, criminal tampering or electrical disruption, it is possible for this product to fail to perform as expected.

**Important Information:** Changes or modifications not expressly approved by Digital Security Controls could void the user's authority to operate this equipment.

## EULA

**IMPORTANT - READ CAREFULLY:** DSC Software purchased with or without Products and Components is copyrighted and is purchased under the following license terms:

This End-User License Agreement ("EULA") is a legal agreement between You (the company, individual or entity who acquired the Software and any related Hardware) and Digital Security Controls, a division of Tyco Safety Products Canada Ltd. ("DSC"), the manufacturer of the integrated security systems and the developer of the software and any related products or components ("HARDWARE") which You acquired.

If the DSC software product ("SOFTWARE PRODUCT" or "SOFTWARE") is intended to be accompanied by HARDWARE, and is NOT accompanied by new HARDWARE, You may not use, copy or install the SOFTWARE PRODUCT. The SOFTWARE PRODUCT includes computer software, and may include associated media, printed materials, and "online" or electronic documentation. Any software provided along with the SOFTWARE PRODUCT that is associated with a separate end-user license agreement is licensed to You under the terms of that license agreement.

By installing, copying, downloading, storing, accessing or otherwise using the SOFTWARE PRODUCT, You agree unconditionally to be bound by the terms of this EULA, even if this EULA is deemed to be a modification of any previous arrangement or contract. If You do not agree to the terms of this EULA, DSC is unwilling to license the SOFTWARE PRODUCT to You, and You have no right to use it.

### SOFTWARE PRODUCT LICENSE

The SOFTWARE PRODUCT is protected by copyright laws and international copyright treaties, as well as other intellectual property laws and treaties. The SOFTWARE PRODUCT is licensed, not sold.

#### 1. GRANT OF LICENSE This EULA grants You the following rights:

**Software Installation and Use** - For each license You acquire, You may have only one copy of the SOFTWARE PRODUCT installed.

**Storage/Network Use** - The SOFTWARE PRODUCT may not be installed, accessed, displayed, run, shared or used concurrently on from different computers, including a workstation, terminal or other digital electronic device ("Device"). In other words, if You have several workstations, You will have to acquire a license for each workstation where the SOFTWARE will be used.

**Backup Copy** - You may make back-up copies of the SOFTWARE PRODUCT, but You may only have one copy per license installed at any given time. You may use the back-up copy solely for archival purposes. Except as expressly provided in this EULA, You may not otherwise make copies of the SOFTWARE PRODUCT, including the printed materials accompanying the SOFTWARE.

#### 2. DESCRIPTION OF OTHER RIGHTS AND LIMITATIONS

**Limitations on Reverse Engineering, Decompilation and Disassembly** - You may not reverse engineer, decompile, or disassemble the SOFTWARE PRODUCT, except and only to the extent that such activity is expressly permitted by applicable law notwithstanding this limitation. You may not make any changes or modifications to the Software, without the written permission of an officer of DSC. You may not remove any proprietary notices, marks or labels from the Software Product. You shall institute reasonable measures to ensure compliance with the terms and conditions of this EULA.

**Separation of Components** - The SOFTWARE PRODUCT is licensed as a single product. Its component parts may not be separated for use on more than one HARDWARE unit.

**Single INTEGRATED PRODUCT** - If You acquired this SOFTWARE with HARDWARE, then the SOFTWARE PRODUCT is licensed with the HARDWARE as a single integrated product. In this case, the SOFTWARE PRODUCT may only be used with the HARDWARE as set forth in this EULA.

**Rental** - You may not rent, lease or lend the SOFTWARE PRODUCT. You may not make it available to others or post it on a server or web site.

**Software Product Transfer** - You may transfer all of Your rights under this EULA only as part of a permanent sale or transfer of the HARDWARE, provided You retain no copies, You transfer all of the SOFTWARE PRODUCT (including all component parts, the media and printed materials, any upgrades and this EULA), and provided the recipient agrees to the terms of this EULA. If the SOFTWARE PRODUCT is an upgrade, any transfer must also include all prior versions of the SOFTWARE PRODUCT.

**Termination** - Without prejudice to any other rights, DSC may terminate this EULA if You fail to comply with the terms and conditions of this EULA. In such event, You must destroy all copies of the SOFTWARE PRODUCT and all of its component parts.

**Trademarks** - This EULA does not grant You any rights in connection with any trademarks or service marks of DSC or its suppliers.

### 3. COPYRIGHT

All title and intellectual property rights in and to the SOFTWARE PRODUCT (including but not limited to any images, photographs, and text incorporated into the SOFTWARE PRODUCT), the accompanying printed materials, and any copies of the SOFTWARE PRODUCT, are owned by DSC or its suppliers. You may not copy the printed materials accompanying the SOFTWARE PRODUCT. All title and intellectual property rights in and to the content which may be accessed through use of the SOFTWARE PRODUCT are the property of the respective content owner and may be protected by applicable copyright or other intellectual property laws and treaties. This EULA grants You no rights to use such content. All rights not expressly granted under this EULA are reserved by DSC and its suppliers.

**EXPORT RESTRICTIONS** - You agree that You will not export or re-export the SOFTWARE PRODUCT to any country, person, or entity subject to Canadian export restrictions.

**CHOICE OF LAW** - This Software License Agreement is governed by the laws of the Province of Ontario, Canada.

**ARBITRATION** - All disputes arising in connection with this Agreement shall be determined by final and binding arbitration in accordance with the Arbitration Act, and the parties agree to be bound by the arbitrator's decision. The place of arbitration shall be Toronto, Canada, and the language of the arbitration shall be English.

### LIMITED WARRANTY

**NO WARRANTY** - DSC PROVIDES THE SOFTWARE "AS IS" WITHOUT WARRANTY. DSC DOES NOT WARRANT THAT THE SOFTWARE WILL MEET YOUR REQUIREMENTS OR THAT OPERATION OF THE SOFTWARE WILL BE UNINTERRUPTED OR ERROR-FREE.

**CHANGES IN OPERATING ENVIRONMENT** - DSC shall not be responsible for problems caused by changes in the operating characteristics of the HARDWARE, or for problems in the interaction of the SOFTWARE PRODUCT with non-DSC-SOFTWARE or HARDWARE PRODUCTS.

**LIMITATION OF LIABILITY; WARRANTY REFLECTS ALLOCATION OF RISK** - IN ANY EVENT, IF ANY STATE IMPLIES WARRANTIES OR CONDITIONS NOT STATED IN THIS LICENSE AGREEMENT, DSC'S ENTIRE LIABILITY UNDER ANY PROVISION OF THIS LICENSE AGREEMENT SHALL BE LIMITED TO THE GREATER OF THE AMOUNT ACTUALLY PAID BY YOU TO LICENSE THE SOFTWARE PRODUCT AND FIVE CANADIAN DOLLARS (CAD \$5.00). BECAUSE SOME JURISDICTIONS DO NOT ALLOW THE EXCLUSION OR LIMITATION OF LIABILITY FOR CONSEQUENTIAL OR INCIDENTAL DAMAGES, THE ABOVE LIMITATION MAY NOT APPLY TO YOU.

**DISCLAIMER OF WARRANTIES** - THIS WARRANTY CONTAINS THE ENTIRE WARRANTY AND SHALL BE IN LIEU OF ANY AND ALL OTHER WARRANTIES, WHETHER EXPRESSED OR IMPLIED (INCLUDING ALL IMPLIED WARRANTIES OF MERCHANTABILITY OR FITNESS FOR A PARTICULAR PURPOSE) AND OF ALL OTHER OBLIGATIONS OR LIABILITIES ON THE PART OF DSC. DSC MAKES NO OTHER WARRANTIES. DSC NEITHER ASSUMES NOR AUTHORIZES ANY OTHER PERSON PURPORTING TO ACT ON ITS BEHALF TO MODIFY OR TO CHANGE THIS WARRANTY, NOR TO ASSUME FOR IT ANY OTHER WARRANTY OR LIABILITY CONCERNING THIS SOFTWARE PRODUCT.

**EXCLUSIVE REMEDY AND LIMITATION OF WARRANTY** - UNDER NO CIRCUMSTANCES SHALL DSC BE LIABLE FOR ANY SPECIAL, INCIDENTAL, CONSEQUENTIAL OR INDIRECT DAMAGES BASED UPON BREACH OF WARRANTY, BREACH OF CONTRACT, NEGLIGENCE, STRICT LIABILITY, OR ANY OTHER LEGAL THEORY. SUCH DAMAGES INCLUDE, BUT ARE NOT LIMITED TO, LOSS OF PROFITS, LOSS OF THE SOFTWARE PRODUCT OR ANY ASSOCIATED EQUIPMENT, COST OF CAPITAL, COST OF SUBSTITUTE OR REPLACEMENT EQUIPMENT, FACILITIES OR SERVICES, DOWNTIME, PURCHASERS TIME, THE CLAIMS OF THIRD PARTIES, INCLUDING CUSTOMERS, AND INJURY TO PROPERTY.

DSC recommends that the entire system be completely tested on a regular basis. However, despite frequent testing, and due to, but not limited to, criminal tampering or electrical disruption, it is possible for this SOFTWARE PRODUCT to fail to perform as expected.

# Regulatory Information

This product has been approved by the California State Fire Marshal (CSFM) pursuant to section 13144.1 of the California Health and Safety Code. See CSFM Listing No. 7272-1273:125 for allowable values and/or conditions for use concerning material presented in this document. The approval is subject to re-examination, revision and possible cancellation.

The smoke alarm WS4936 / WS4936EU / WS8936 has a recommended service life of 10 years under normal conditions of use. Please refer to the label applied to the device indicating the recommended replacement year.

For servicing the unit or replacement batteries please call your installation company that provided you with the alarm system.

**NOTE:** In Australia, the device shall not be installed in locations where the normal ambient temperature is lower than 41°F (5°C) or higher than 113°F (45°C). This manual shall be used in conjunction with the Installation Manual of the alarm control panel. All the instructions specified within that manual must be observed.

## FCC Compliance Statement

**CAUTION:** Changes or modifications not expressly approved by DSC could void your authority to use this equipment.

This equipment generates and uses radio frequency energy and if not installed and used properly, in strict accordance with the manufacturer's instructions, may cause interference to radio and television reception. It has been type tested and found to comply with the limits for Class B device in accordance with the specifications in Subpart 'B' of Part 15 of FCC Rules, which are designed to provide reasonable protection against such interference in any residential installation. However, there is no guarantee that interference will not occur in a particular installation. If this equipment does cause interference to television or radio reception, which can be determined by turning the equipment off and on, the user is encouraged to try to correct the interference by one or more of the following measures:

- Re-orient the receiving antenna
- Relocate the alarm control with respect to the receiver
- Move the alarm control away from the receiver
- Connect the alarm control into a different outlet so that alarm control and receiver are on different circuits.

If necessary, the user should consult the dealer or an experienced radio/television technician for additional suggestions. The user may find the following booklet prepared by the FCC helpful: "How to Identify and Resolve Radio/Television Interference Problems". This booklet is available from the U.S. Government Printing Office, Washington, D.C. 20402, Stock # 004-000-00345-4.

## Industry Canada Compliance Statement:

This Class B digital apparatus meets all requirements of the Canadian interference-causing equipment regulations.

Cet appareil numérique de la Classe B respecte toutes les exigences de règlement sur le matériel brouilleurdurdu Canada.

IC:160A-WS4936

The term "IC:" before the radio certification number only signifies that Industry Canada technical specifications were met.

# DSC

From Tyco Security Products

©2015 Tyco Security Products. All Rights Reserved.  
Tech Support: 1-800-387-3630 (Canada & U.S.)  
or 905-760-3000 • www.dsc.com

This device complies with FCC Part 15 and IC License-exempt RSSs. Operation is subject to the following two conditions: (1) this device may not cause interference, and (2) this device must accept any interference, including interference that may cause undesired operation of the device.

Le présent appareil est conforme aux CNR d'Industrie Canada applicables aux appareils radio exempts de licence. L'exploitation est autorisée aux deux conditions suivantes : (1) l'appareil ne doit pas produire de brouillage, et (2) l'utilisateur de l'appareil doit accepter tout brouillage radioélectrique subi, même si le brouillage est susceptible d'en compromettre le fonctionnement.

Hereby, DSC, declares that this device is in compliance with the essential requirements and other relevant provisions of Directive 1999/5/EC.

The complete R&TTE Declaration of Conformity can be found at [http://www.dsc.com/listings\\_index.aspx](http://www.dsc.com/listings_index.aspx)

(CZE) DSC jako výrobce prohlašuje, že tento výrobek je v souladu se všemi relevantními požadavky směrnice 1999/5/EC.

(DAN) DSC erklærer herved at denne komponent overholder alle vigtige krav samt andre bestemmelser gitt i direktiv 1999/5/EC.

(DUT) Hierbij verklaart DSC dat dit toestel in overeenstemming is met de eisen en bepalingen van richtlijn 1999/5/EC.

(FIN) DSC vakuuttaa laitteen täyttävän direktiivin 1999/5/EC olennaiset vaatimukset.

(FRE) Par la présente, DSC déclare que ce dispositif est conforme aux exigences essentielles et autres dispositions pertinentes de la Directive 1999/5/EC.

(GER) Hierdurch erklärt DSC, daß dieses Gerät den erforderlichen Bedingungen und Voraussetzungen der Richtlinie 1999/5/EC entspricht.

(GRE) Δια του παρόντος, η DSC, δηλώνει ότι αυτή η συσκευή είναι σύμφωνη με τις ουσιώδεις απαιτήσεις και με όλες τις άλλες σχετικές αναφορές της Οδηγίας 1999/5/EC.

(ITA) Con la presente la Digital Security Controls dichiara che questo prodotto è conforme ai requisiti essenziali ed altre disposizioni rilevanti relative alla Direttiva 1999/05/CE.

(NOR) DSC erklærer at denne enheten er i samsvar med de grunnleggende krav og øvrige relevante krav i direktiv 1999/5/EF.

(POL) DSC oświadcza, że urządzenie jest w zgodności z zasadniczymi wymaganiami oraz pozostałymi istotowymi postanowieniami Dyrektywy 1999/5/WE.

(POR) Por este meio, a DSC, declara que este equipamento está em conformidade com os requisitos essenciais e outras determinações relevantes da Directiva 1999/5/EC.

(SPA) Por la presente, DSC, declara que este equipo está en conformidad con los requisitos esenciales y otros requisitos relevantes de la Directiva 1999/5/EC.

(SWE) DSC bekräftar härmed att denna apparat uppfyller de väsentliga kraven och andra relevanta bestämmelser i Direktivet 1999/5/EC.



1134-CPR-XXXX

EN14604: 2005/AC:2008

DSC, Toronto, Canada

Smoke Alarm Device