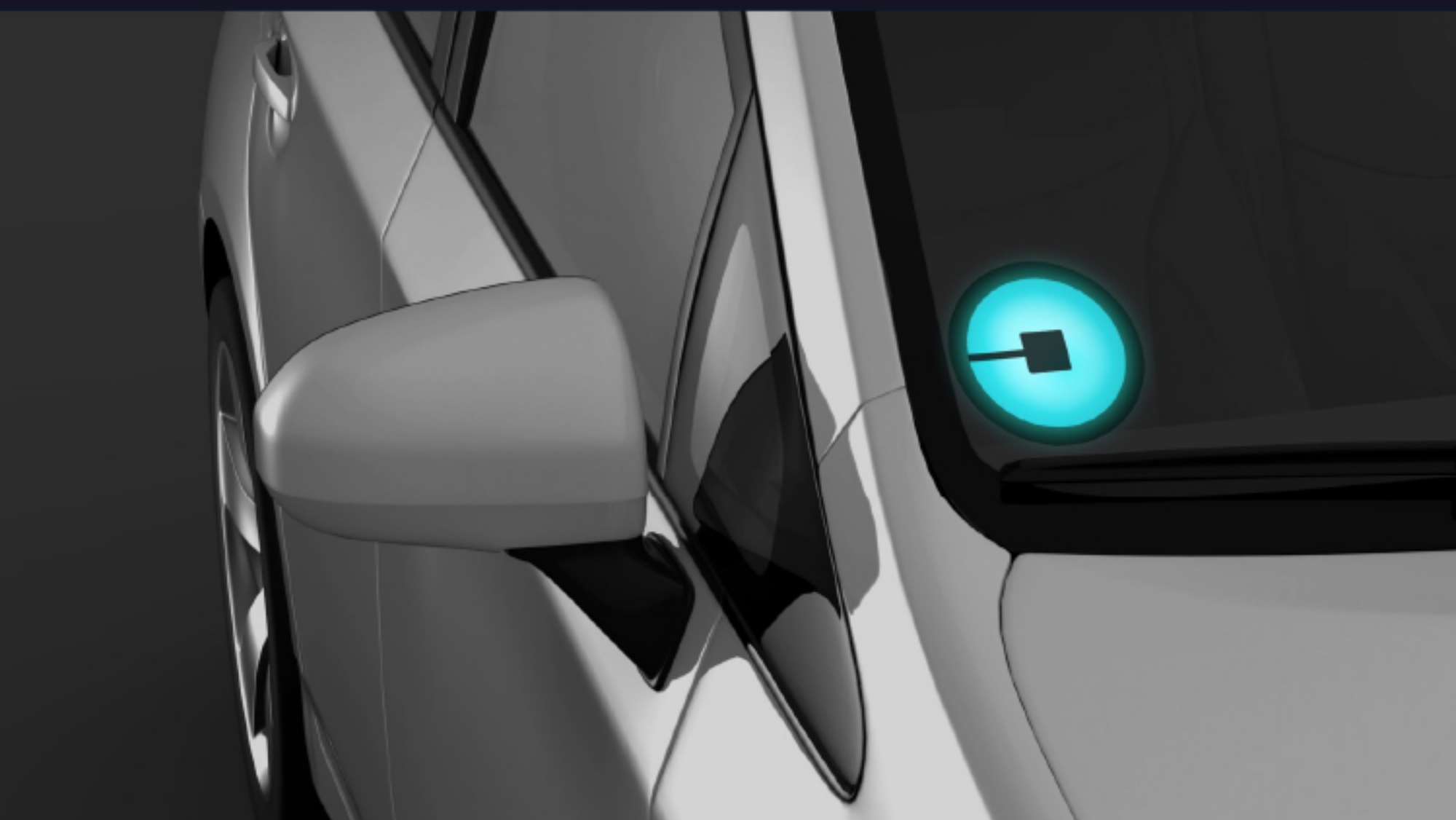




Installation Guide



Uber is about connection—connecting riders with reliable transportation, drivers with a way to earn, people with each other.

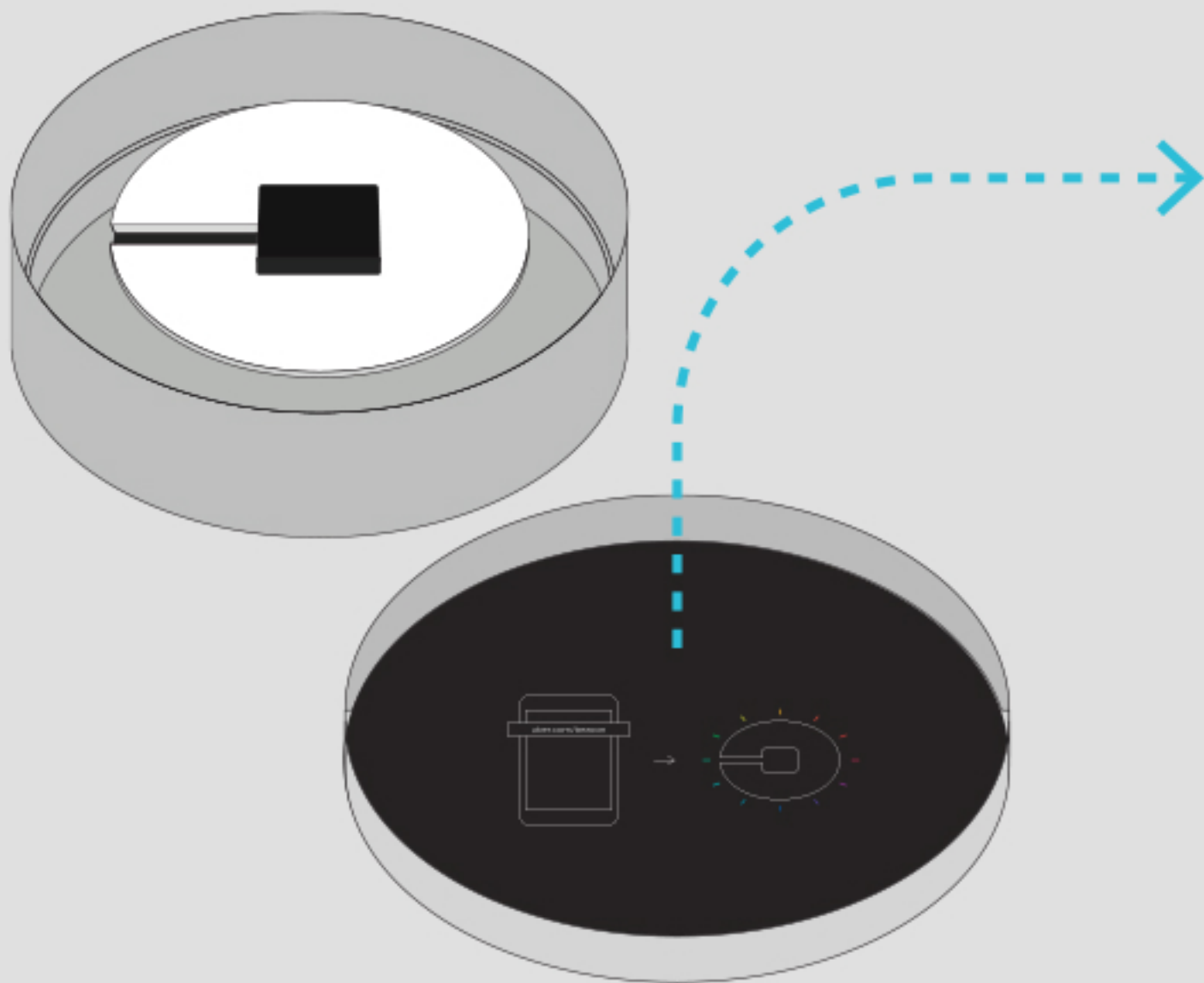
And now it's easier than ever to connect with your riders. The Uber Beacon glows in the color that your rider chooses, so they can quickly find your car and you'll know you're picking up the right person.

Read on to learn how to set up your Uber Beacon so you can continue providing excellent service to the riders of your city.

[NEXT](#)



Installation Guide

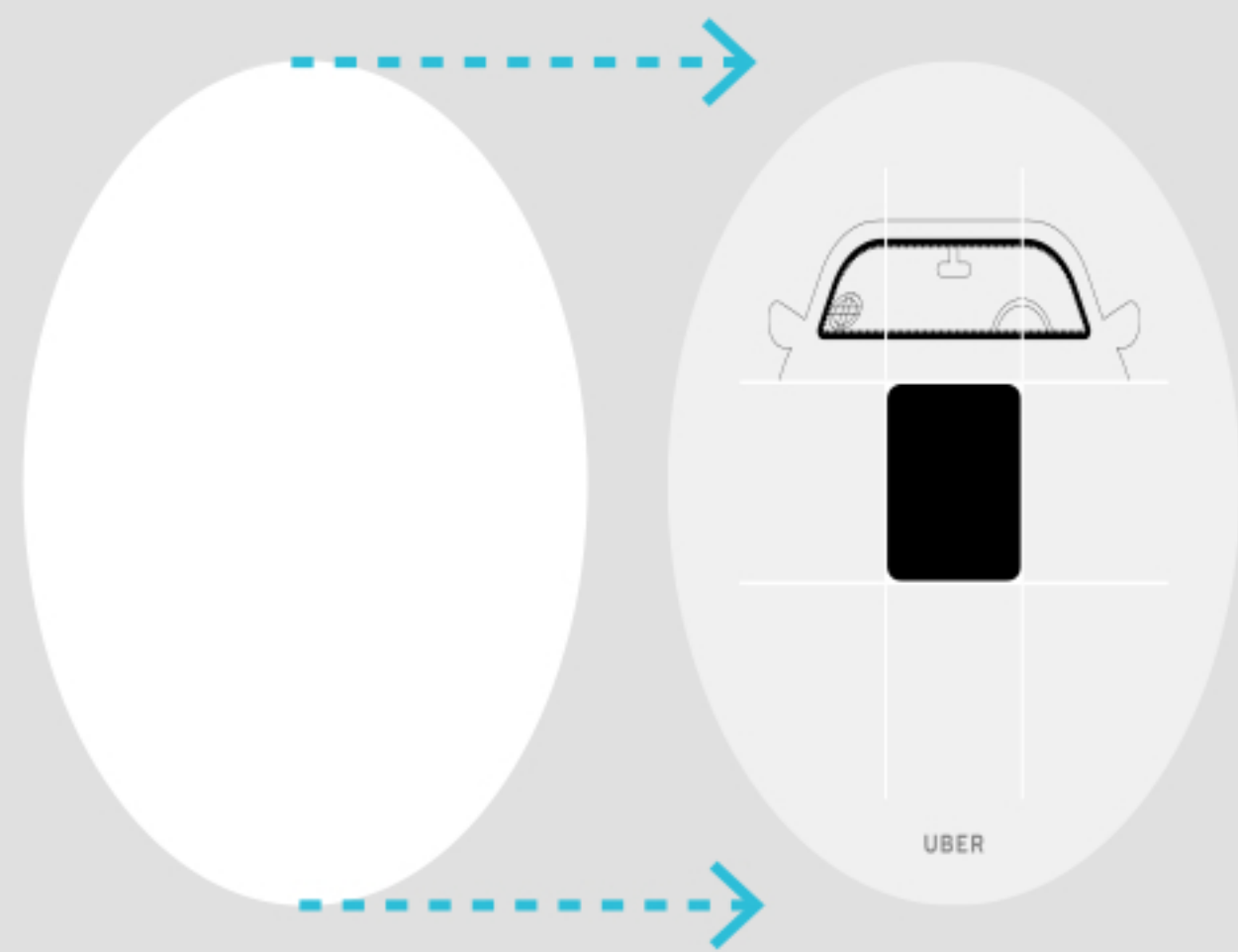


Locate the template

Remove the insert from the inside of the lid and turn it over.



Installation Guide

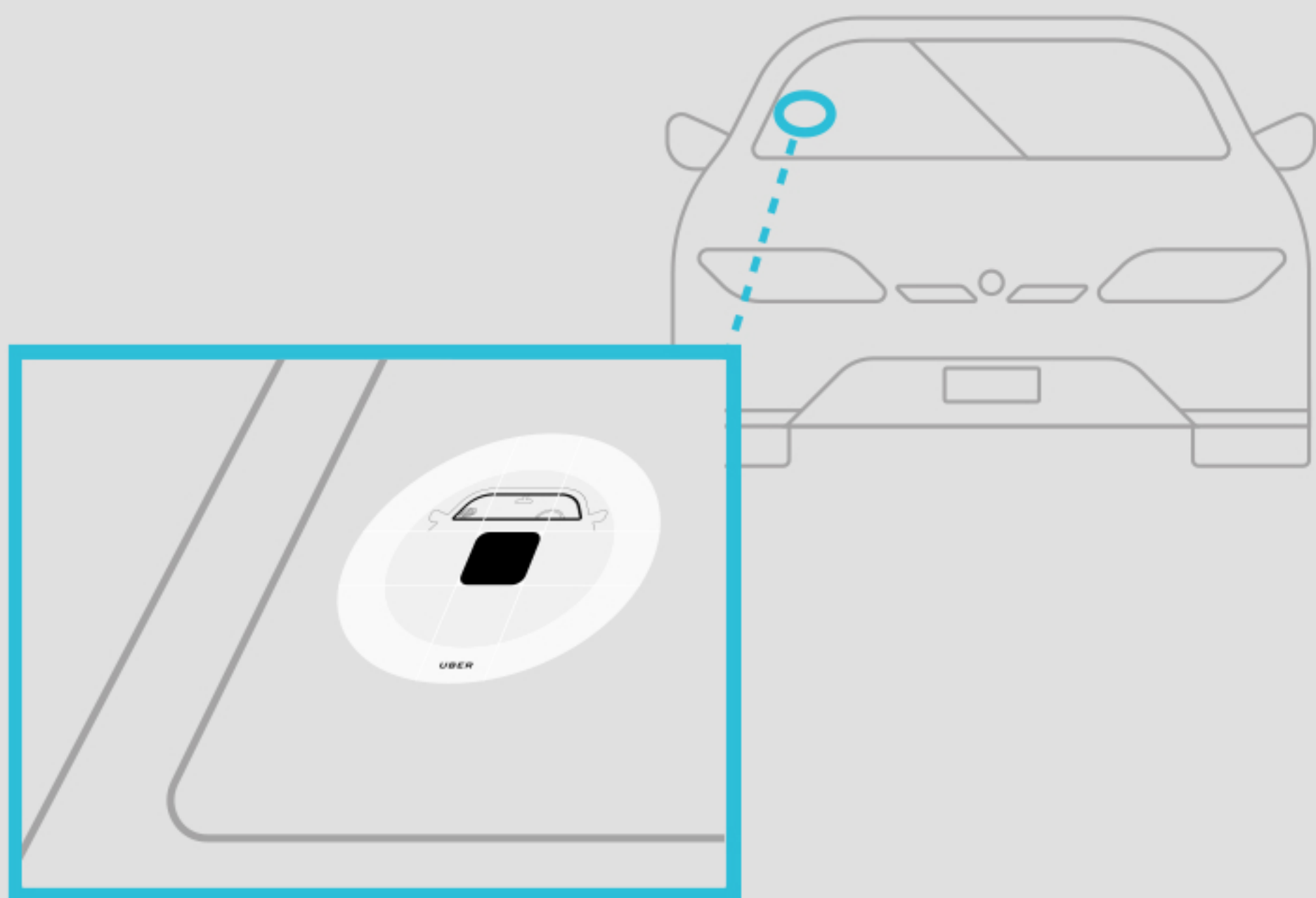


Separate the template

Peel back the clear template from the paper insert.



Installation Guide

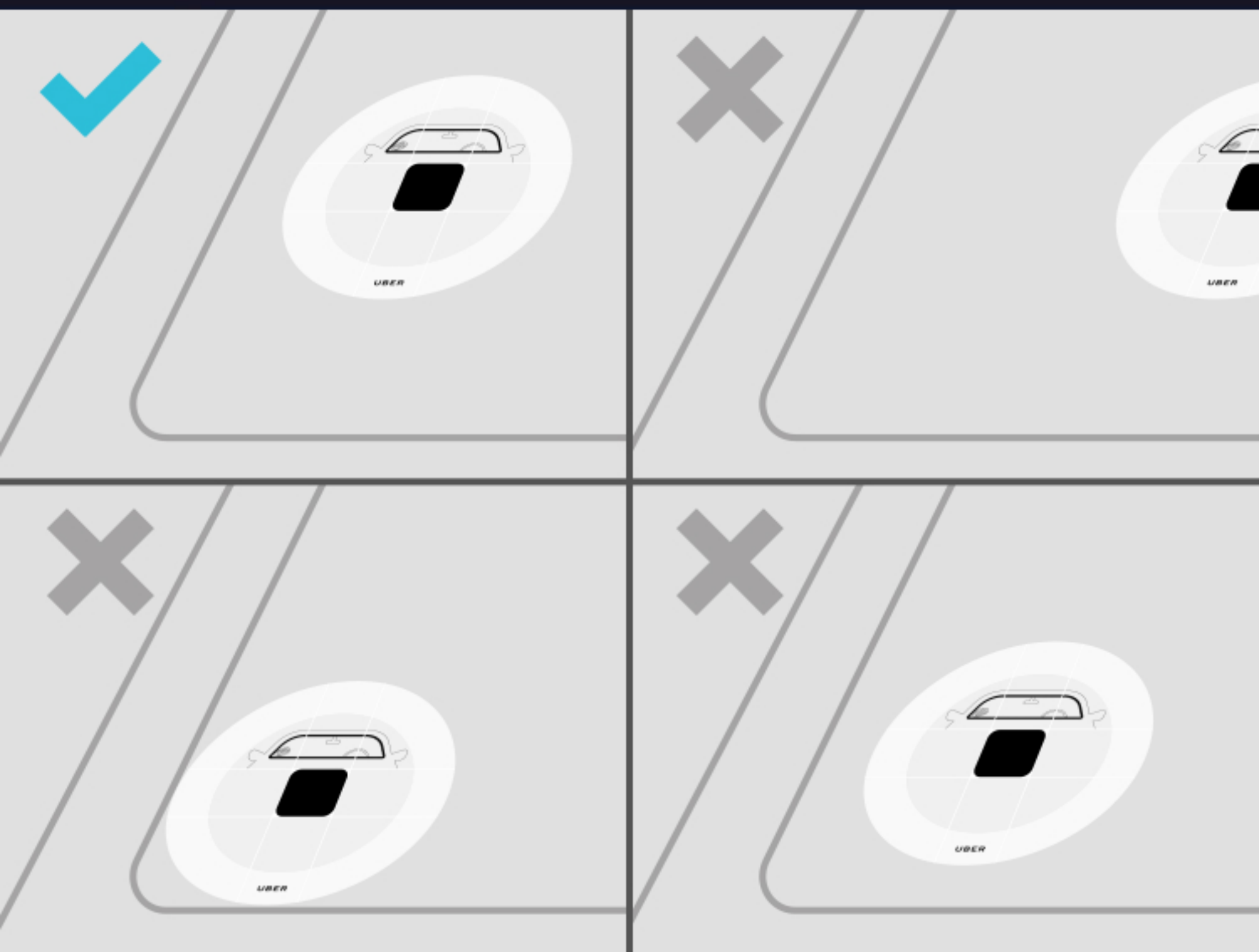


Position the template

Place the template on the outside of your front windshield.



Installation Guide

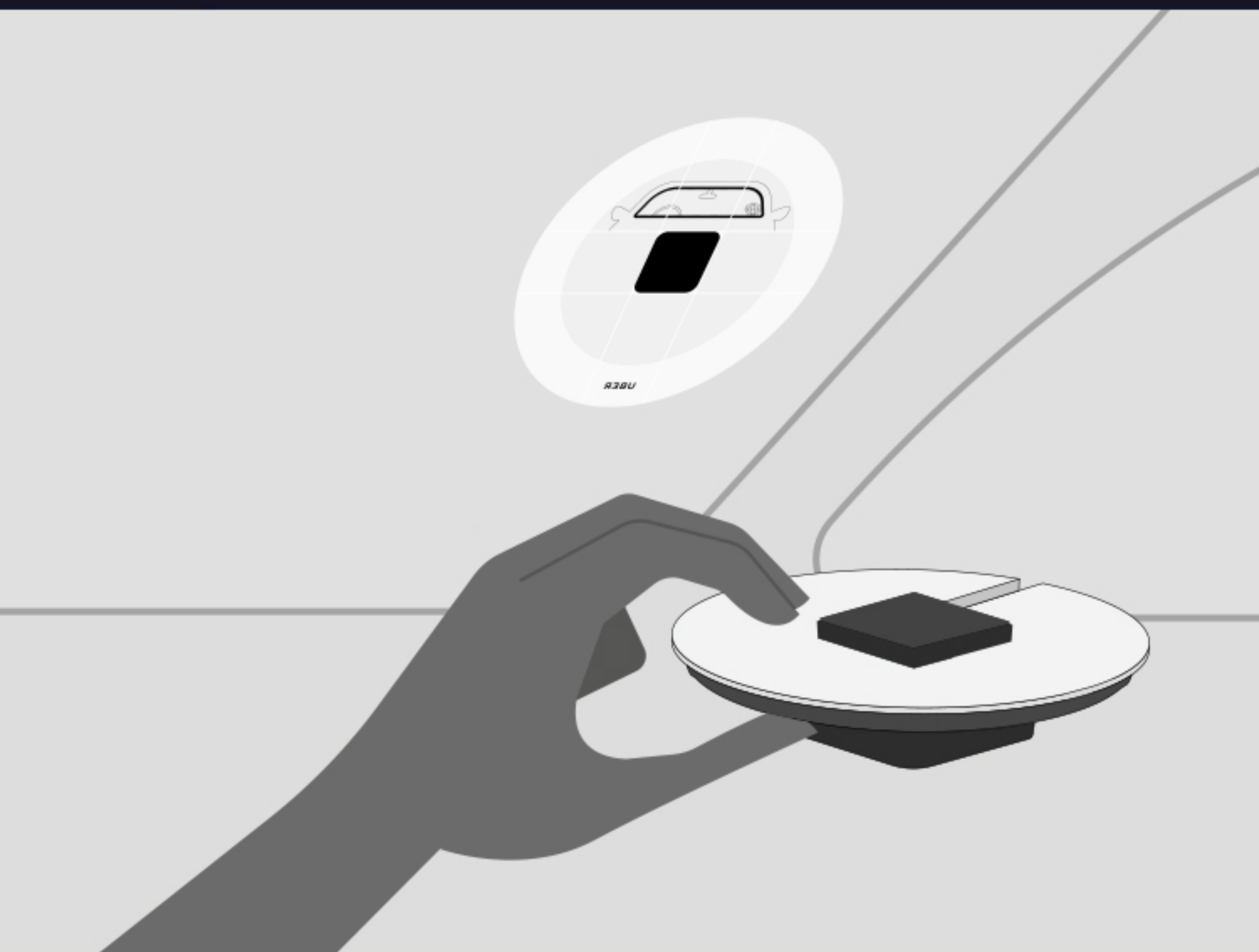


Make sure placement is correct

Leave clearance on the bottom and left side and ensure the Uber logo is at the bottom of the template.



Installation Guide

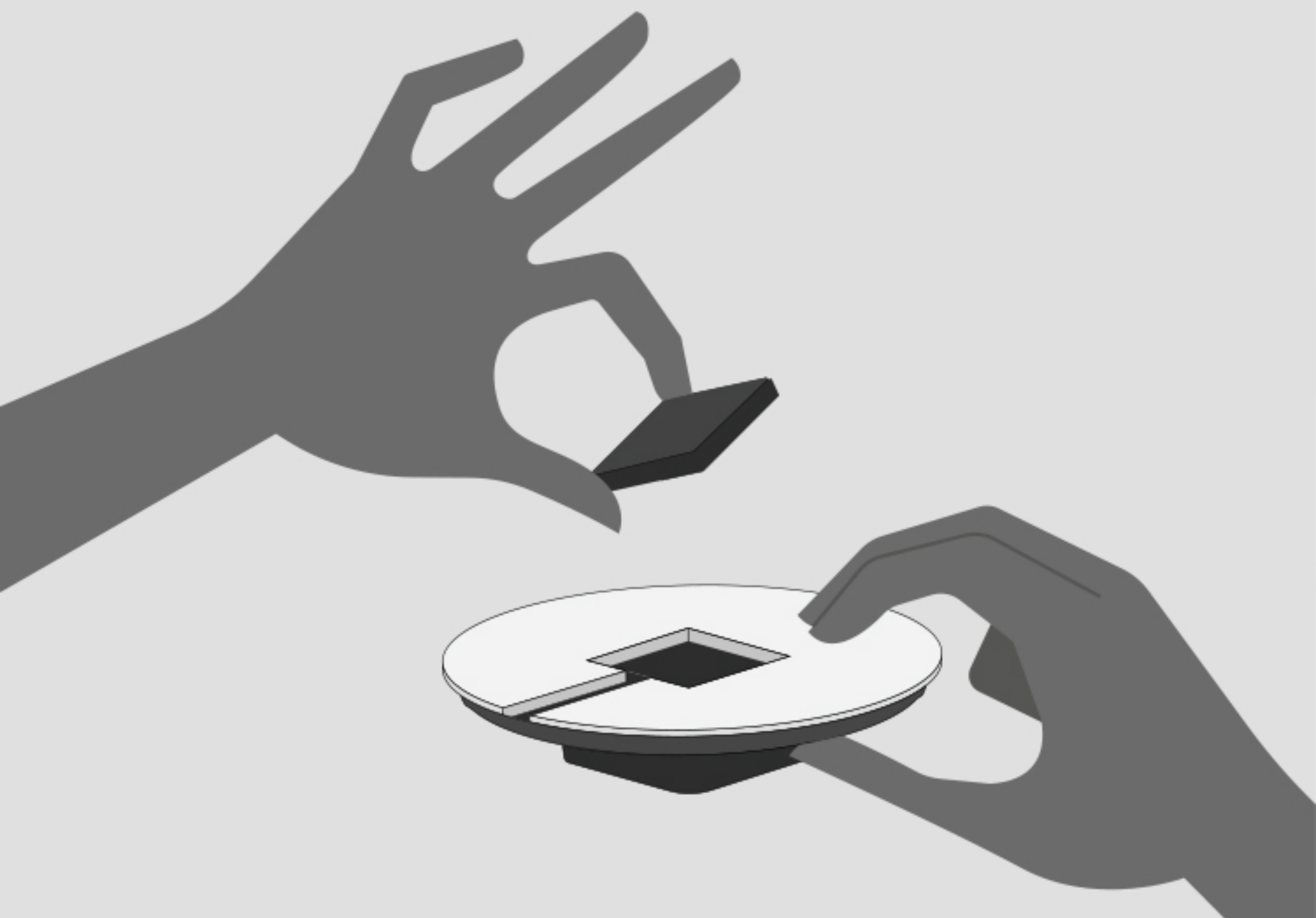


Get into the passenger seat

Remove the Uber Beacon from the box. Use the alcohol wipe to clean the part of the windshield that is covered by the template.



Installation Guide

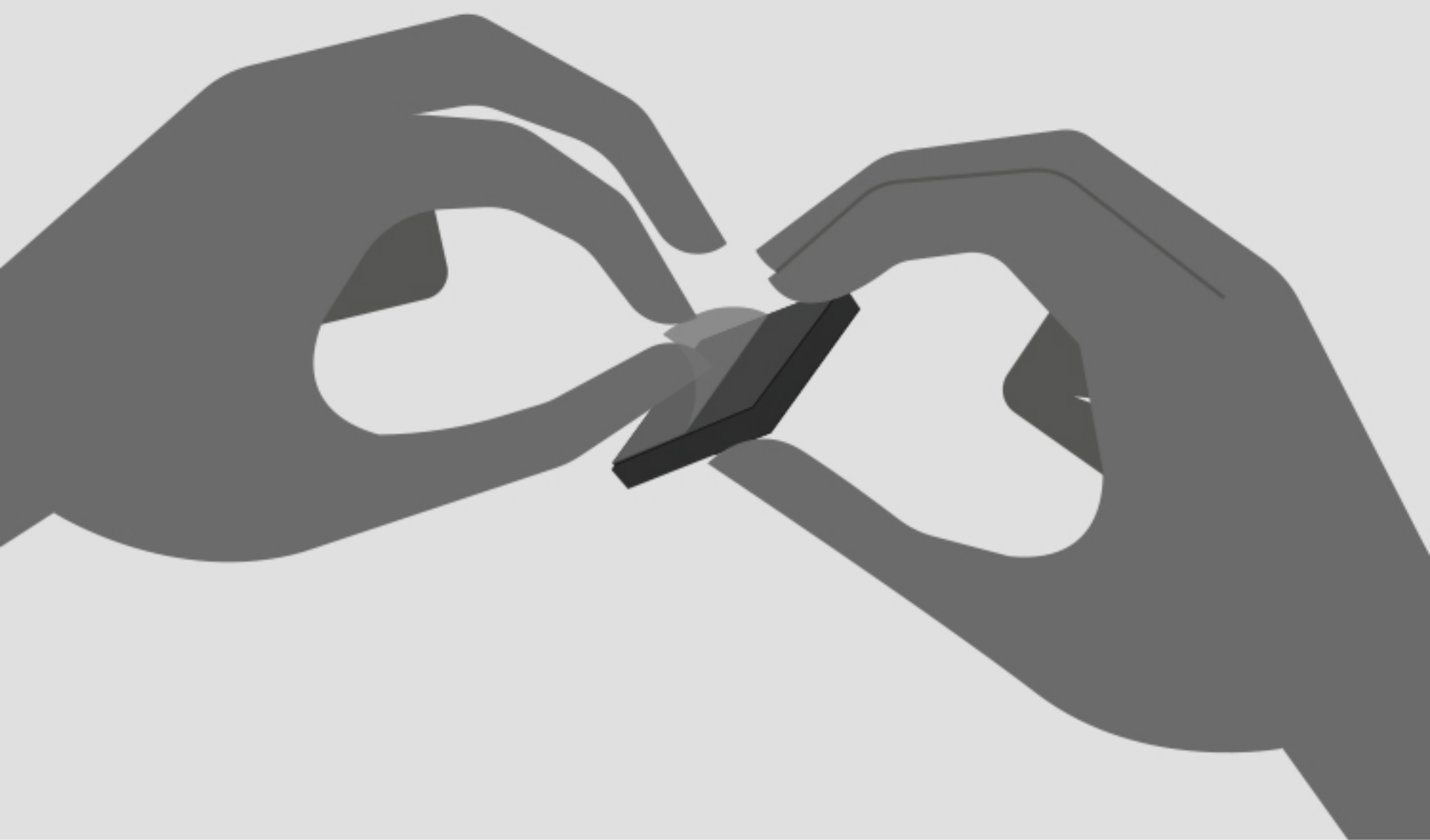


Remove the square magnet

Pull the plastic tab to pop the magnet off of the Beacon.



Installation Guide

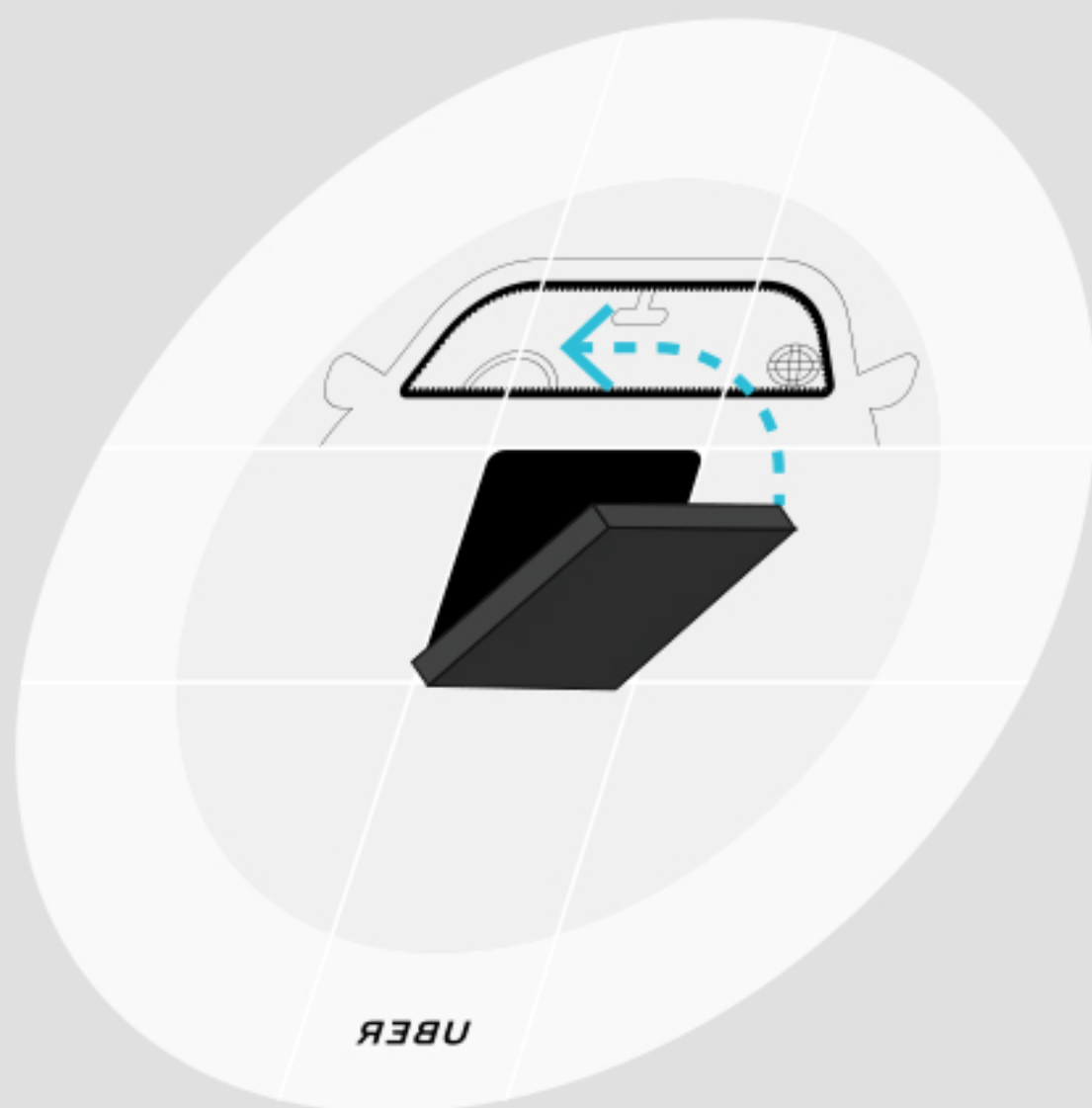


Prepare the magnet

Remove the plastic tab from the magnet, exposing the adhesive layer.



Installation Guide

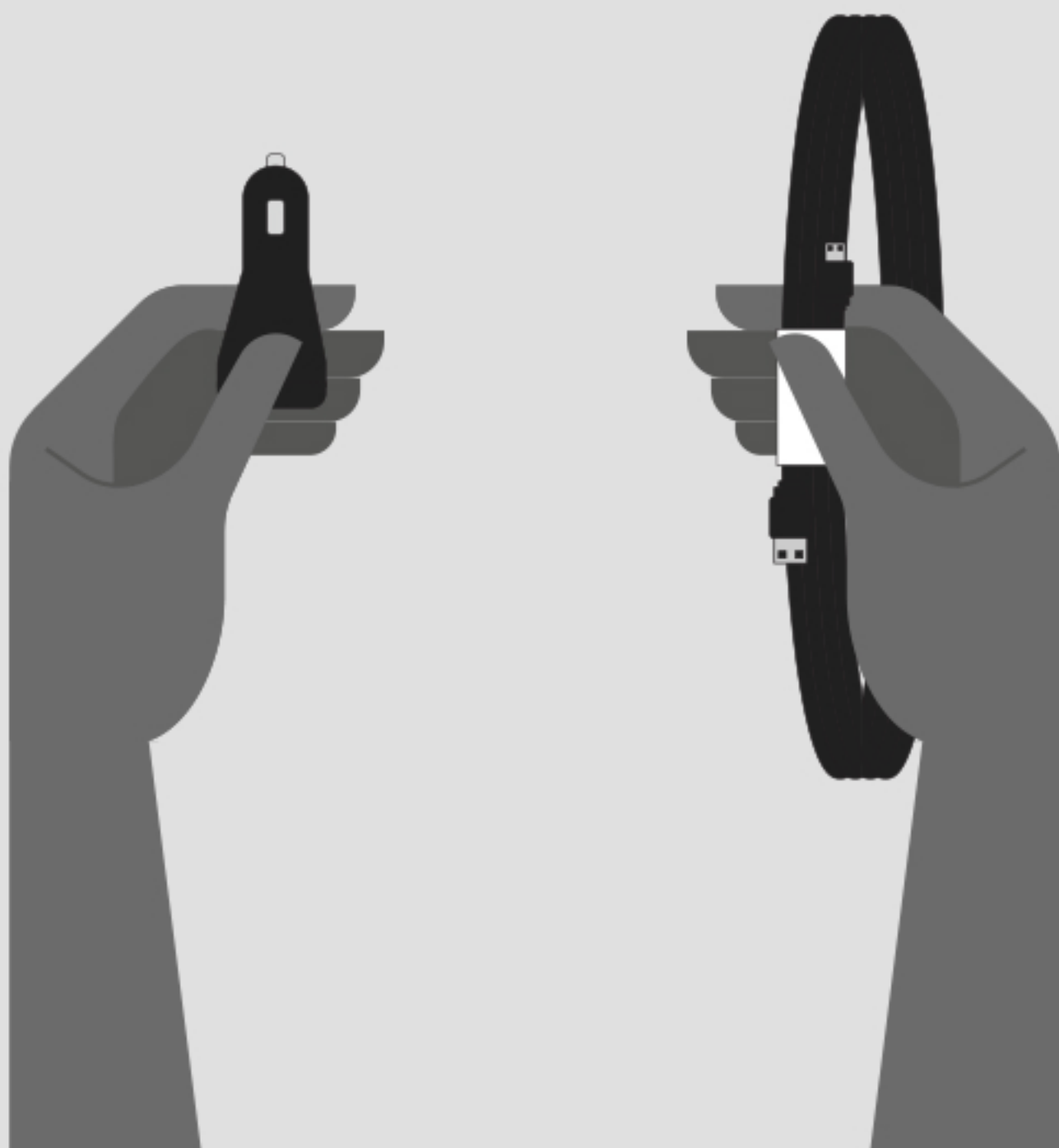


Place the magnet

Line the magnet up with the black square on the template. Make sure the adhesive side is facing the windshield. Press and hold it for 3 seconds.



Installation Guide

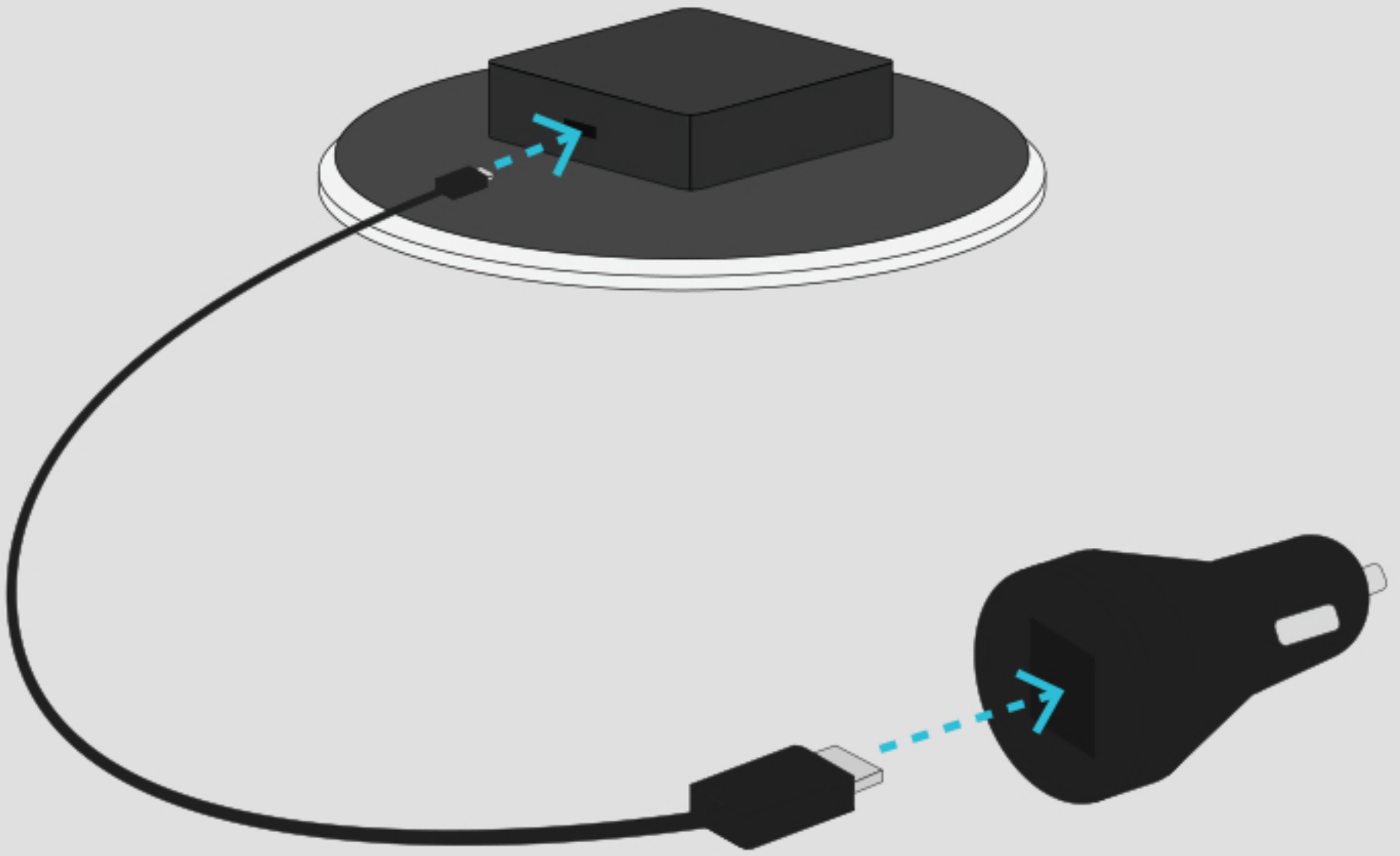


Remove the charger and cord

You'll find them at the bottom of the box.



Installation Guide

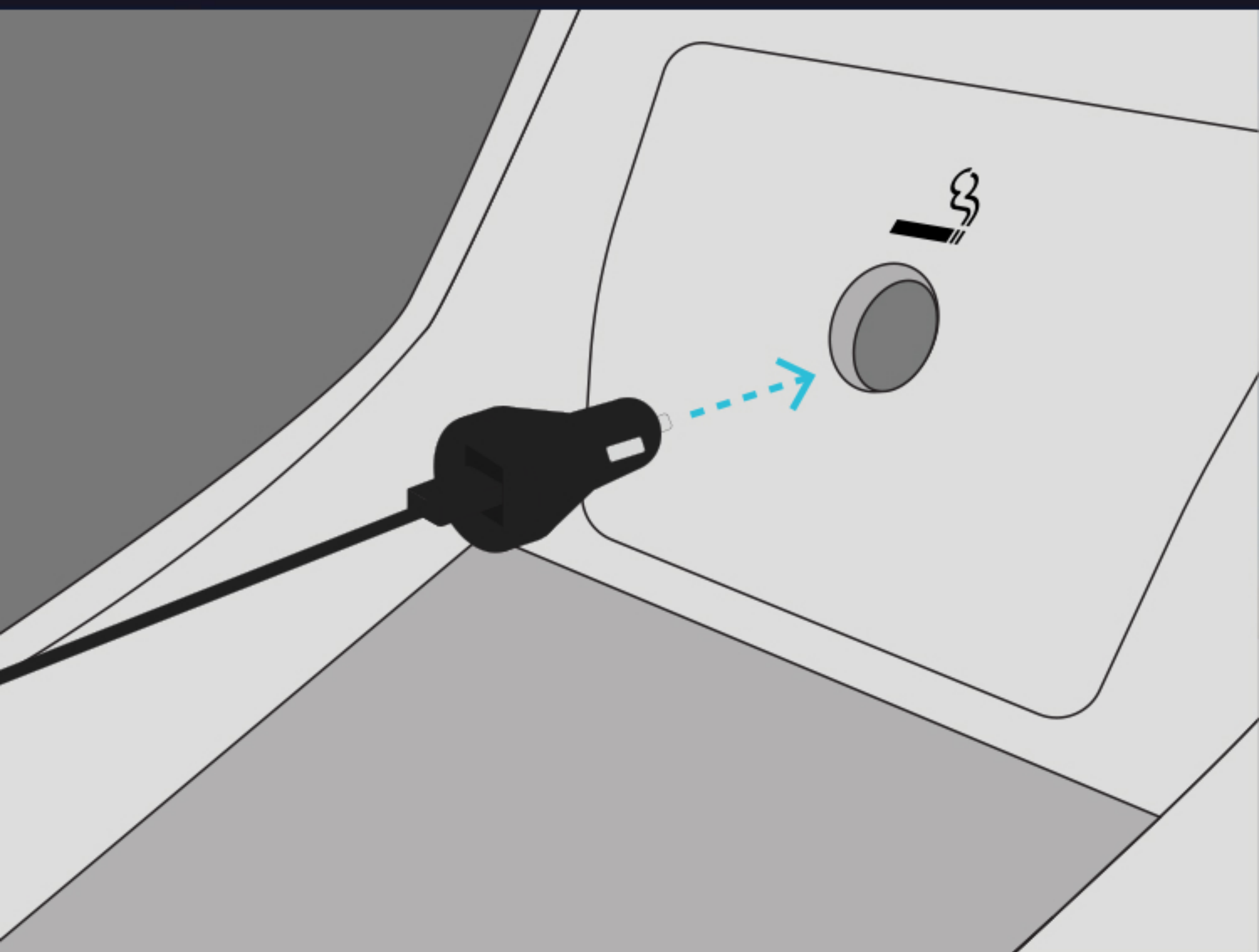


Connect the USB cord

Plug one end into the Beacon and the other end into the charger.



Installation Guide

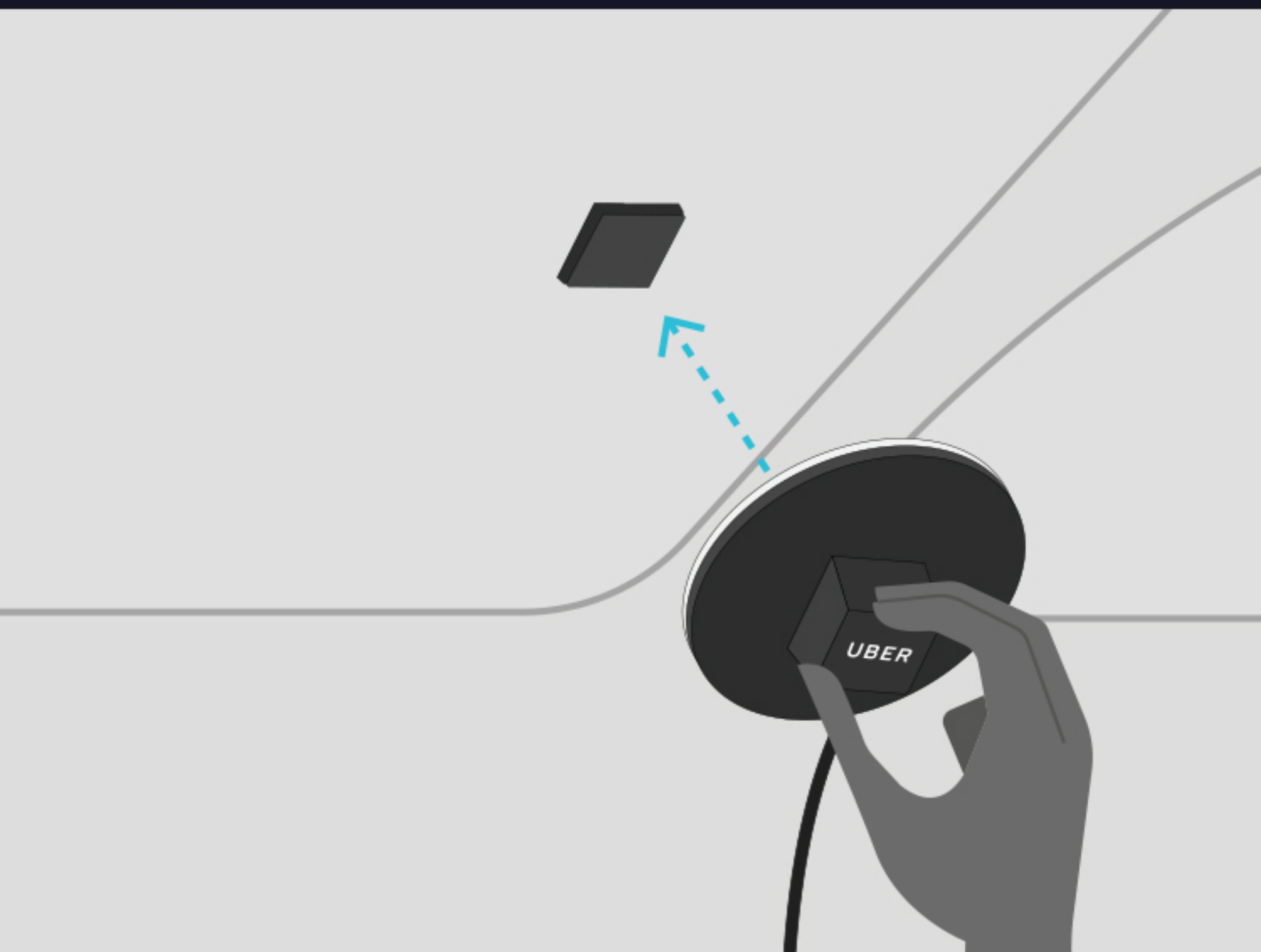


Plug in the charger

It fits into your car's DC connector. If your car has a USB port, plug the cord directly into it.



Installation Guide

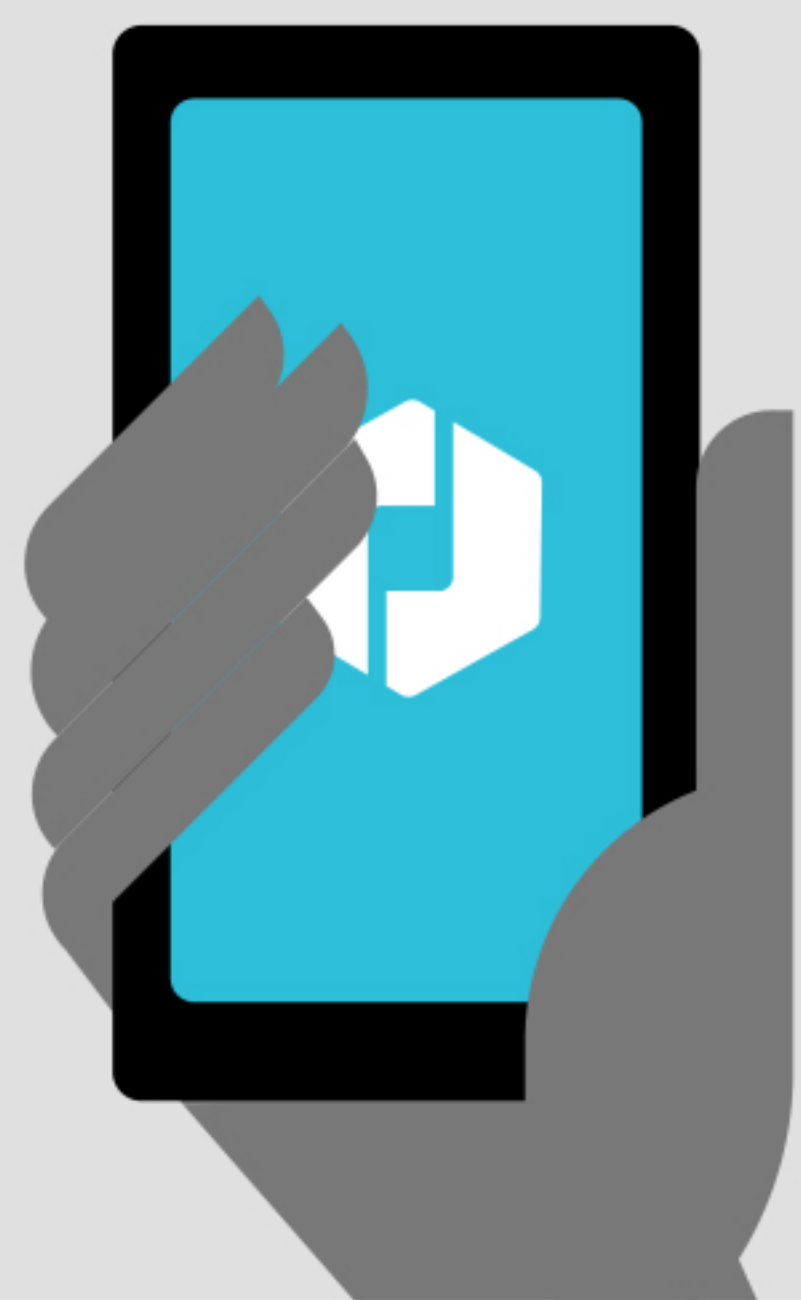


Attach the Beacon

Line up the center of the Beacon with the magnet and attach—it will click into place. Make sure the Uber logo on the back is not upside down.



Installation Guide



Pair with the app

Make sure your Bluetooth is turned on. Open the Uber Partner app and select Beacon to sync your device.



Installation Guide



Remove the template

You can discard the template on the exterior of your windshield.



Installation Guide

Regulatory Information

Per FCC 15.19(a)(3) and (a)(4) This device complies with part 15 of the FCC Rules. Operation is subject to the following two conditions: (1) This device may not cause harmful interference, and (2) this device must accept any interference received, including interference that may cause undesired operation.

Changes or modifications made by the user that is not expressly approved by Uber Technologies could void the user's authority to operate the equipment.