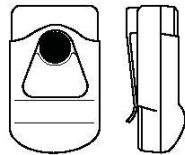


# Learn Mode Water Resistant Pendant Panic Button Installation Instructions

## Introduction

This panic button can be used throughout the premises for police, medical, or auxiliary alarm activation. When the sensor button is pressed, the built-in transmitter sends a signal to the panel (Figure 1 below).

**Figure 1: 60-578 Pendant Panic Button**



The water-resistant design helps prevent damage in case the sensor accidentally gets wet.

The sensor can be worn using the built-in belt clip or it can be mounted on a wall in a location convenient for the customer, using the optional wall-mount holder (kit number 80-116). Each kit includes the following:

- 5 wall-mount holders;
- 5 pieces of double-sided tape;
- 10 plastic anchors; and
- 10 Phillips-head screws.

You will also need a small Phillips screwdriver (if installing the optional wall-mount holder).

## Installation guidelines

Use the following guidelines when installing this button:

- The transmitter in the button has an open-air range of up to 1,000 ft. (305 m), but the installation environment may influence this range.
- When mounting on a wall, determine the best location for each panic button so it is easily accessible.
- The 3.5 VDC lithium battery will last at least 12 months.

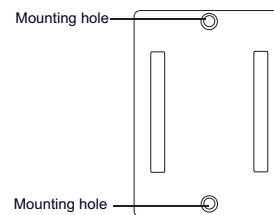
## Installation

You can mount the optional wall-mount holder, using anchors and screws or double-sided tape.

### To mount the holder with anchors and screws:

1. Place the holder on the wall at the desired location and mark the mounting holes with a pencil (Figure 2 below).

**Figure 2: Mounting with screws**

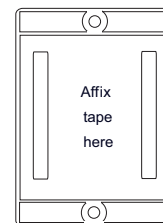


2. Secure the holder to the wall with the screws supplied. Use the anchors supplied where studs are not present.

### To mount the holder with double-sided tape:

1. Peel off the colored backing from the double-sided tape and place it on back of the holder (Figure 3 below).

**Figure 3: Mounting with double-sided tape**



2. Peel off the other backing and firmly press the holder against the mounting surface.

## Programming

This section describes the basic steps for adding the sensor to panel memory. For complete instructions, refer to the specific panel's documentation.

### To program the sensor:

1. Set the panel in program mode.
2. When prompted by the panel, enter the appropriate group number (groups 00 through 07).

**Note:** For UL installations where the holder is used, the sensor must be added as a fixed type (sensor groups 00, 02, 04, or 05).

3. When prompted by the panel, select the desired sensor number.
4. When prompted by the panel, trip the sensor by pressing the sensor button.
5. Exit from program mode.

## Sensor test

### To test the sensor:

1. Set the system to the Dealer Sensor Test mode.
2. Press the button on the sensor.
3. Count the number of signals received by the panel, indicated by interior siren beeps. Seven to eight beeps are considered acceptable.
4. Test the sensor from several locations within the premises to check for consistent response.

## Battery replacement

### To replace the sensor battery:

1. To disassemble the sensor, remove the two screws on the back of the sensor and separate the front and back plastic.

**Caution:** You must be free of static electricity before handling the transmitter circuit board. Touch a grounded, bare metal surface before touching the circuit board, or wear a grounding strap.

2. Remove the old battery from its holder and install the new battery, observing polarity

**Caution:** Install only the same size and type of battery. Do not substitute another size or type of battery.

3. Reassemble the sensor.

**Note:** Be sure to assemble the sensor correctly to ensure water resistance. Be especially careful not to nick or damage the rubber gasket lining.

4. Test the sensor as described in "Sensor test" above.

## Lithium battery disposal

Lithium batteries that are no longer usable are considered hazardous waste. Be sure to properly dispose of the old battery. Contact your local city government for hazardous waste disposal laws.

## Specifications

Compatibility	All Interlogix Security Learn Mode panels
Power source	3.6 VDC Saft or Tekcell lithium battery
Enclosure	Water-resistant and shock-resistant
Dimensions (LxWxD)	2.25 x 1.75 x 0.75 in. (5.71 x 4.44 x 1.90 cm)

## Regulatory information

Manufacturer	UTC Fire & Security Americas Corporation, Inc. 1275 Red Fox Rd., Arden Hills, MN 55112-6943, USA
FCC compliance	This device complies with part 15 of the FCC Rules. Operation is subject to the following two conditions: (1) This device may not cause harmful interference, and (2) this device must accept any interference received, including interference that may cause undesired operation. Changes or modifications not expressly approved by Interlogix can void the user's authority to operate the equipment.  FCC ID: B4Z-612-H2OPANIC
IC compliance	IC: 1175C-612PANIC  This Class B digital apparatus complies with Canadian ICES-003. Cet appareil numérique de la classe B est conforme à la norme NMB-003 du Canada. Le fonctionnement est soumis aux deux conditions suivantes : (1) cet appareil peut ne pas provoquer d'interférences et (2) cet appareil doit accepter toutes interférences, y compris les interférences pouvant provoquer un fonctionnement non désiré de l'appareil.
U.S. patents	4,855,713, 4,864,636, and others pending.

## Contact information

For contact information, see [www.utcfireandsecurity.com](http://www.utcfireandsecurity.com) or [www.interlogix.com](http://www.interlogix.com).

For technical support, toll-free: 888.437.3287 in the US including Alaska, Hawaii, Puerto Rico, and Canada. Outside the toll-free area, contact your dealer.

Copyright © 2014 Interlogix, a UTC Fire & Security Company.  
All rights reserved.