



QUICK START GUIDE

Wall Mount AP

Packing List

- 1 x AP
- 1 x Quick Start Guide
- 1 x Warranty Card

UTT™ | WA Series WiFi AP
Enterprise WiFi System SN:0904-0007-003

1 Product Overview

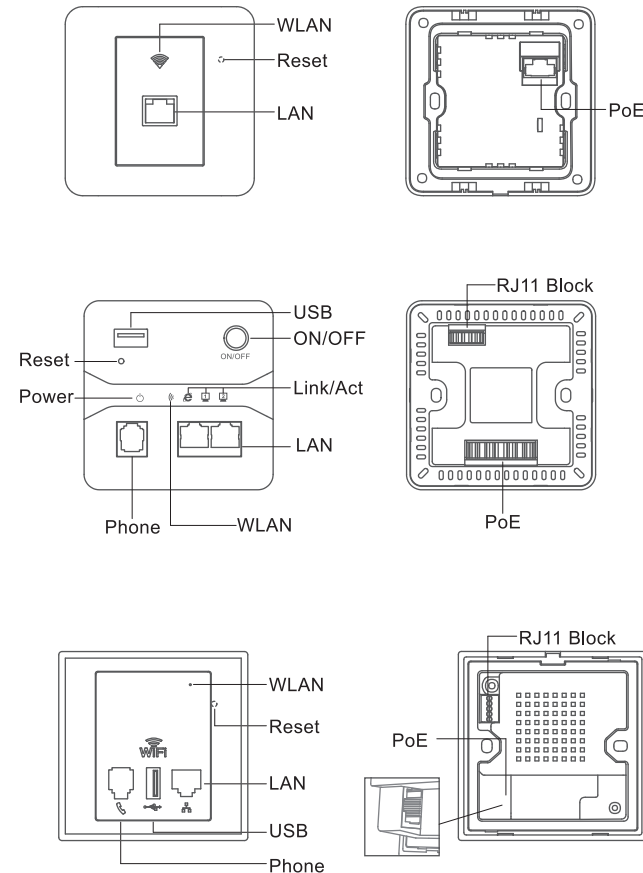
Thank you for purchasing the UTT WA Series Wall Mount WiFi AP.

The UTT WA Series Wall Mount AP is a best-in-class 802.11N 2.4G indoor Access Point specifically designed for business-class wireless network such as hotels, coffee shops, shopping centers, restaurants and university campus.

With a standard installation design and a stylish appearance, the UTT WA Series AP fit nicely into a standard 86x86 type wall jack and seamlessly blends in with most interior decorations in an office or a room. With integrated 802.3af Power over Ethernet, it allows installation in areas where power outlet is not readily available.

The UTT WA Series Wall Mount AP can also be managed by UTT WX Series WLAN Controller when working in FIT Mode. The WX Series WLAN Controller User Guides are available for download at www.uttglobal.com/download/

2 Button & Interface



LED	Description
Power	Power LED will be on when AP is powered on.
WLAN	After the AP is powered on and wireless is enabled, WLAN LED will blink when transmitting/receiving wireless data.
Link/Act	Link/Act LED will be on when a valid link is established on the corresponding port, it will blink when transmitting/receiving data on the port.

Button/Interface	Description
Reset	With the AP powered on, press the Reset button(uncover the cover of WA1300N/WA1505N) with a bent paperclip for 5 seconds until the WLAN LED goes off. The AP will restart itself and reset the device to factory default settings.
ON/OFF	Power switch button.
LAN	The LAN port (100Mbps) is used to connect to network devices, such as a computer, or a switch.
USB	The USB port is used to charge external devices(mobile phone, pads).
Phone	The Phone port is used to connect to a telephone.
PoE	The PoE port is used to connect the power. Power can be provided by a UTT PoE Switch or a 802.3af PoE injector.
RJ11 Block	The RJ11 block is used to connect to a 4-core telephone cable.

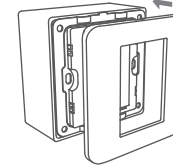
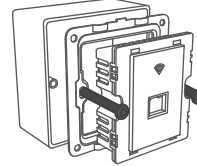
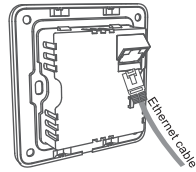
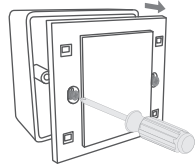


Address: 3F, Building 9, No.518 Xinzhuang Road, Caohejing
Songjiang Hi-Tech Park, Shanghai 201612, P. R. China
Phone: +86 21-67766519, 67766527
Global Sale's Office Number: +1(626)722-5032
Fax: +86 21-67766518
Email: uttglobal@utt.com.cn
Skype Customer Service: uttglobal
Official Website: www.uttglobal.com
Copyright ©2014 UTT Technologies Co., Ltd. All rights reserved.

3 Hardware Installation

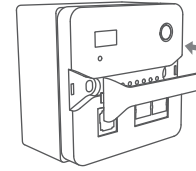
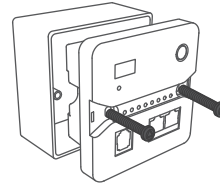
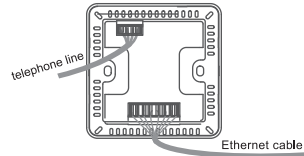
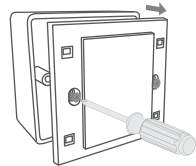
I.WA1300N

- 1 Uncover the cover of 86-type wall jack with a screwdriver.
- 2 Connect the Ethernet cable from the PoE switch to the PoE port on the back of the AP.
- 3 Tighten the screws to fix the AP.
- 4 Install the AP cover to complete hardware installation.



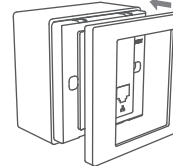
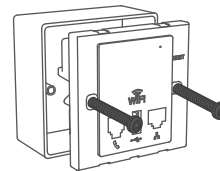
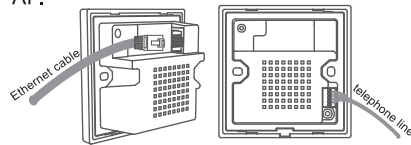
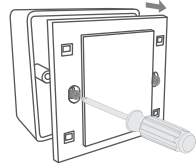
II.WA1500N

- 1 Uncover the cover of 86-type wall jack with a screwdriver.
- 2 Connect the Ethernet cable from the PoE switch to the PoE punch down block and the telephone line to the RJ11 Block on the bottom of the AP.
- 3 Tighten the screws to fix the AP.
- 4 Install the AP cover to complete hardware installation.



III.WA1505N

- 1 Uncover the cover of 86-type wall jack with a screwdriver.
- 2 Connect the Ethernet cable from the PoE switch to the PoE port and the telephone line to the RJ11 Block on the bottom of the AP.
- 3 Tighten the screws to fix the AP.
- 4 Install the AP cover to complete hardware installation.



4 Configuring the Device

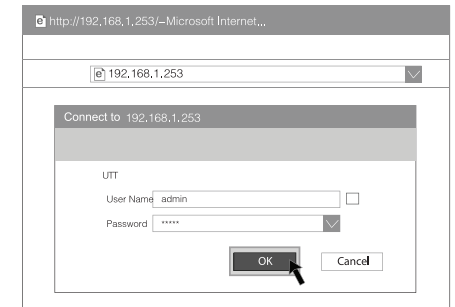
NOTE: Please assign your computer a static IP address within the same range as the AP's IP address(192.168.1.253 by default). See more on *Appendix: Computer Configuration*.

- 1 Launch a web browser, such as Internet Explorer or Mozilla Firefox.

In the address field enter the AP's IP Address(192.168.1.253) and press the Enter key.

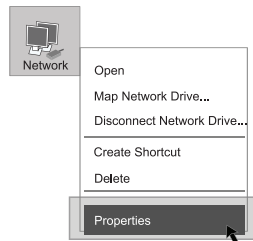


- 2 Enter the default user name of admin and password of admin in the User Name and Password fields, click "OK" to access the AP's Web GUI.

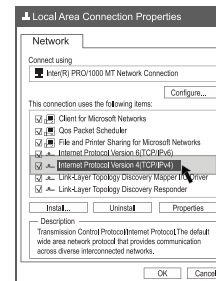


Appendix: Computer Configuration [Windows 7]

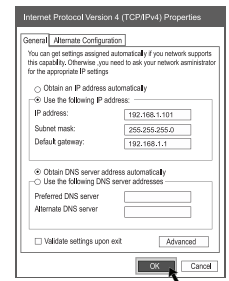
- 1 Click "Start→ Control Panel → Network and Internet→ Network and Sharing Center → Change Adapter Settings". Right click "Local Area Connection" and select "Properties".



- 2 Double click "Internet Protocol Version 4 (TCP/IPv4)" to open the Internet Protocol Version 4(TCP/IPv4) Properties window.



- 3 Select "Use the following IP address", enter the static IP address (a free IP address in 192.168.1.0/24) in IP address field, 255.255.255.0 in Subnet mask field, and enter the IP address of your default gateway in Default Gateway field. Click "OK" to finish the configuration.



This device complies with Part 15 of the FCC Rules. Operation is subject to the following two conditions:

1. This device may not cause harmful interference, and 2. This device must accept any interference received, including interference that may cause undesired operation.

Note: This equipment has been tested and found to comply with the limits for a Class B digital device, pursuant to part 15 of the FCC Rules. These limits are designed to provide reasonable protection against harmful interference in a residential installation. This equipment generates, uses and can radiate radio frequency energy and, if not installed and used in accordance with the instructions, may cause harmful interference to radio communications. However, there is no guarantee that interference will not occur in a particular installation. If this equipment does cause harmful interference to radio or television reception, which can be determined by turning the equipment off

and on, the user is encouraged to try to correct the interference by one or more of the following measures:

—Reorient or relocate the receiving antenna.

—Increase the separation between the equipment and receiver.

—Connect the equipment into an outlet on a circuit different from that to which the receiver is connected.

—Consult the dealer or an experienced radio/TV technician for help.

Caution: Any changes or modifications not expressly approved by the party responsible for compliance could void the user's authority to operate this equipment.

FCC Radiation Exposure Statement

This equipment complies with FCC RF radiation exposure limits set forth for an uncontrolled environment. This equipment should be installed and operated with a minimum distance of 20 centimeters between the radiator and your body.