

Business Wireless Router Quick Guide

Packing List

- 1 x Wireless Router
- 1 x Power Adapter
- 1 x Quick Guide
- 1 x Warranty Card
- 1 x Accessories Kit
- 1 x Category 5 (Cat 5) Ethernet cable

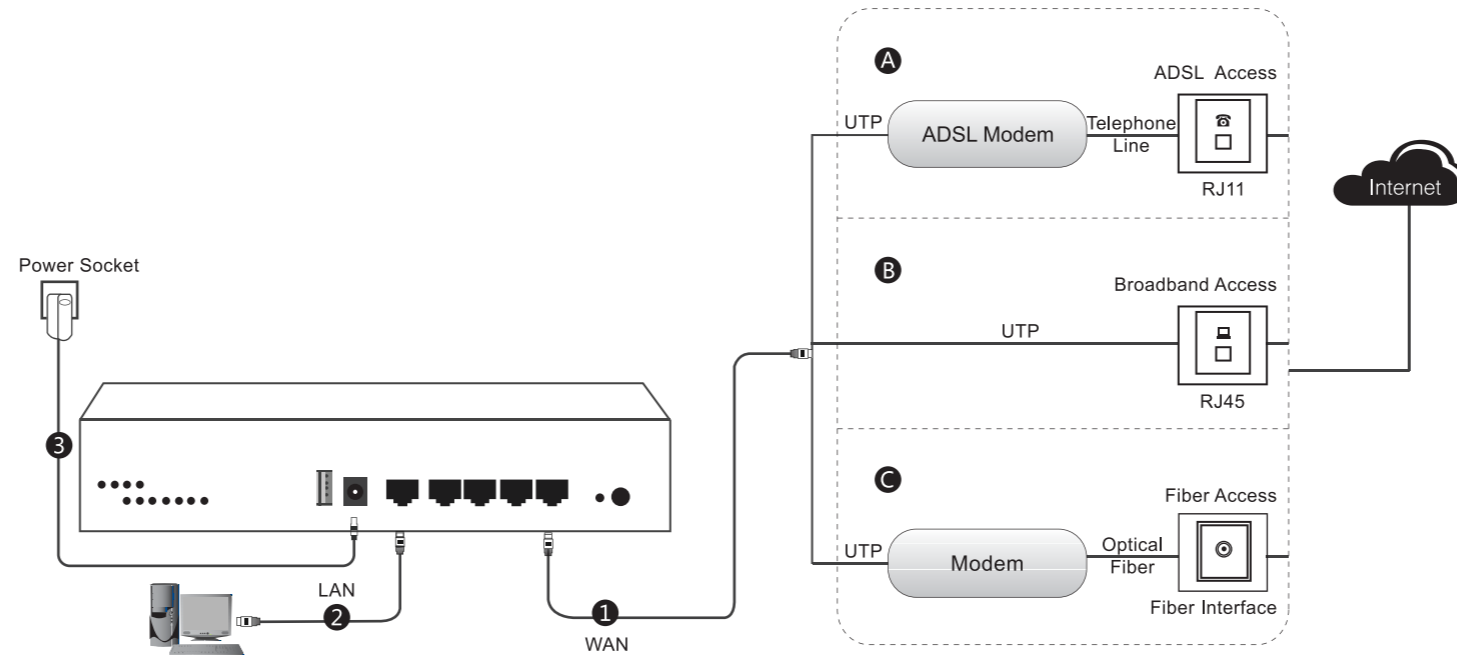
Optional

- 1 x User Manual

If any of the parts are incorrect, missing, or damaged, please contact with local distributor. Keep the carton, including the original packing materials, in case you need to return the product for repair.
SN: 0904-0003-008

1 Hardware Installation

Please install the Device according to step 1, 2 and 3, and choose the WAN Access Type. If it's ADSL Access, please choose A; if it's Broadband Access, please choose B; if it's Fiber Access, please choose C.



Note:

1. Please shut down the Device and disconnect all cables connecting to the device during thunderstorms to avoid lightning strike.

Interface/Button	Description
WAN	The Interface is used to your Providers Internet Uplink.
LAN	The LAN interface are used to connect the wired computers,hubs, switches,and other Ethernet network devices on the LAN to the Device.
USB	Connect the device (such as: flash disk) with USB interface,specific features vary by the product model.
TF	Connect TF card for storing shared data.
Turbo	Amplify wireless transmitting power.
PWR	Connect the external power adapter.
Reset	Reset current settings to Factory Default Settings.While the Device is powered on,use a pin or paper clip to press and hold the Reset button for more than 5 seconds,and then release the button.After that,the Device will restart with factory default settings.

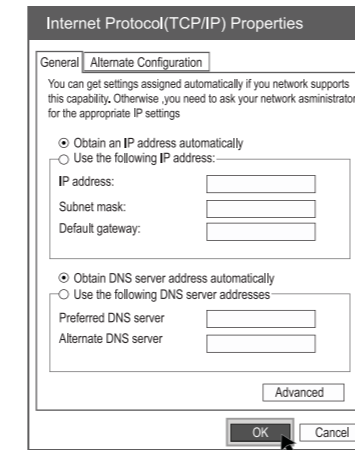
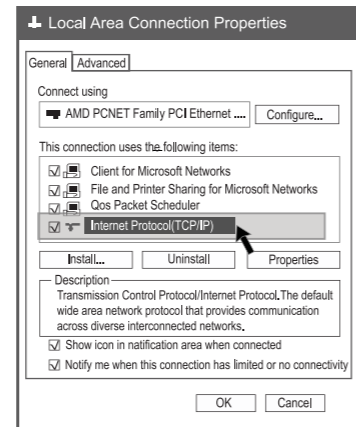
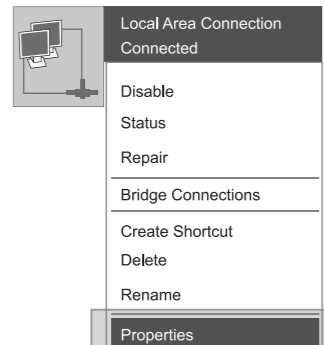
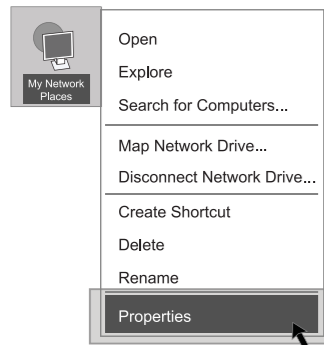
LEDs	Description
PWR	The Power LED is on when the Device is powered on.
SYS	The SYS LED blinks when the system is operating properly.
USB	The USB LED is on when the USB interface is connected.
2.4G	The 2.4G LED is on when 2.4GHz Wireless is enabled.The LED blinks when transmitting/receiving 2.4G wireless Data.
WAN	The LED is on when Ethernet cable connection is normal.The WAN LED blinks when the WAN port is sending or receiving data.
LAN	The LED is on when Ethernet cable connection is normal.The LAN LED blinks when the LAN port is sending or receiving data.
Turbo	The Turbo LED blinks when the function is enabled.

2. Please install the equipment in a place away from the High Power Radio or Radar Station.
3. Important Safety Instructions KEEP THIS DEVICE AWAY FROM WATER!
4. Please use default power adapter.

2 Computer Configuration

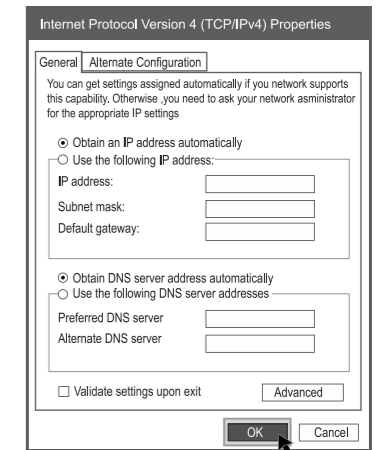
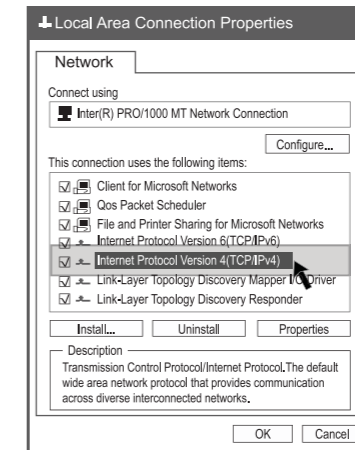
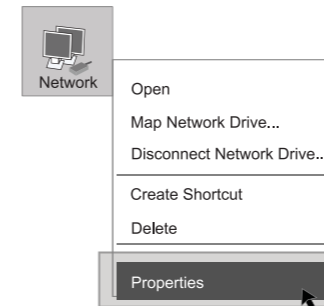
Windows XP

- 1 Right click "My Network Places", choose "Properties".
- 2 Right click "Local Area Connection", choose "Properties".
- 3 Double click "Internet Protocol (TCP/IP)".
- 4 Choose "Obtain an IP Address automatically" and "Obtain DNS server address automatically", click "OK". It will go back to "Local Area Connection Properties", click "OK".



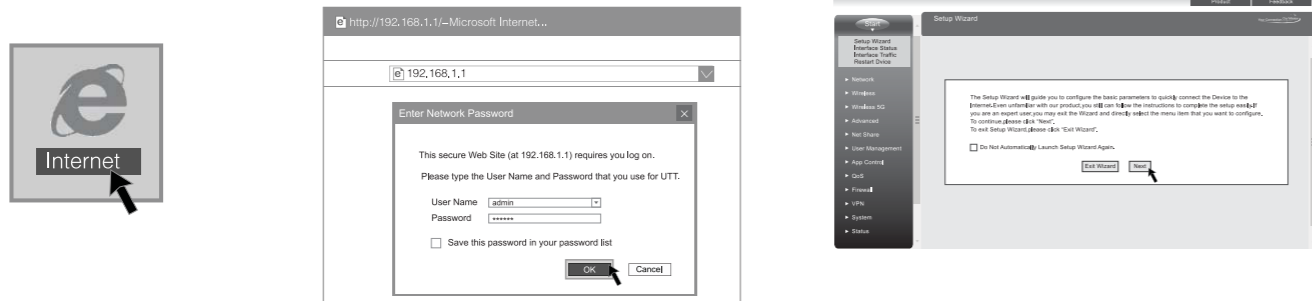
Windows 7

- 1 Click "Start → Control Panel → Network and Connection → Local Area Connection", right click "Local Area Connection", choose "Properties".
- 2 Double click "Internet Protocol Version 4 (TCP/IPv4)".
- 3 Choose "Obtain an IP Address automatically" and "Obtain DNS server address automatically", click "OK". It will go back to last interface, click "OK".

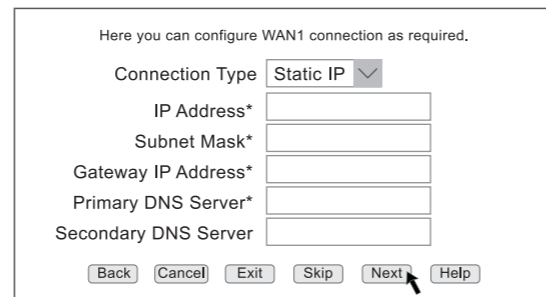
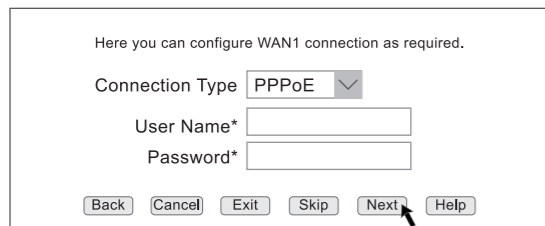


3 Router Configuration

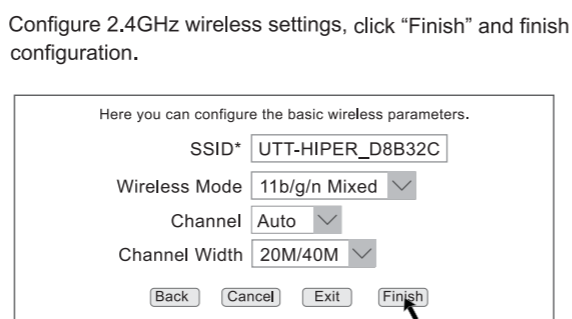
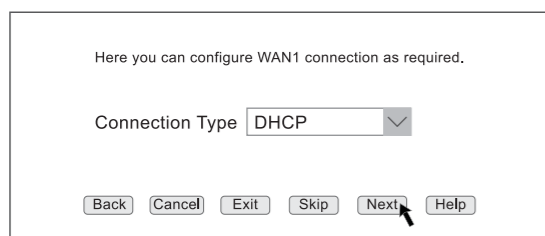
- 1 Open a web browser.
- 2 Type "http://192.168.1.1" in the address field of your browser, press "Enter" key, enter user name and password in the pop-up login interface, default user name and password are both admin(Lowercase letters), click "OK".
- 3 Enter the router configuration interface "Start" → "Setup Wizard", click "Next".



- 4 Select Connection Type, configure your Internet settings, click "Next".
 - A If your ISP provides you with account, password, please choose "PPPoE".
 - B If your ISP provides you with IP Address, Subnet Mask, Gateway, DNS Address, please choose "Static IP".
 - C If your ISP doesn't offer any data, please choose "DHCP".

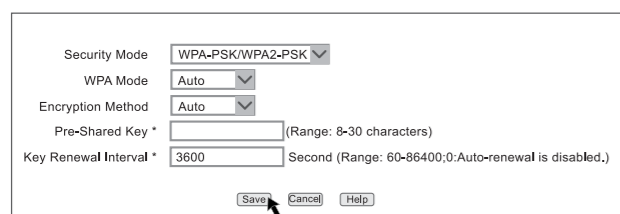


- 6 Wireless security configuration.



- 6 Wireless security configuration.

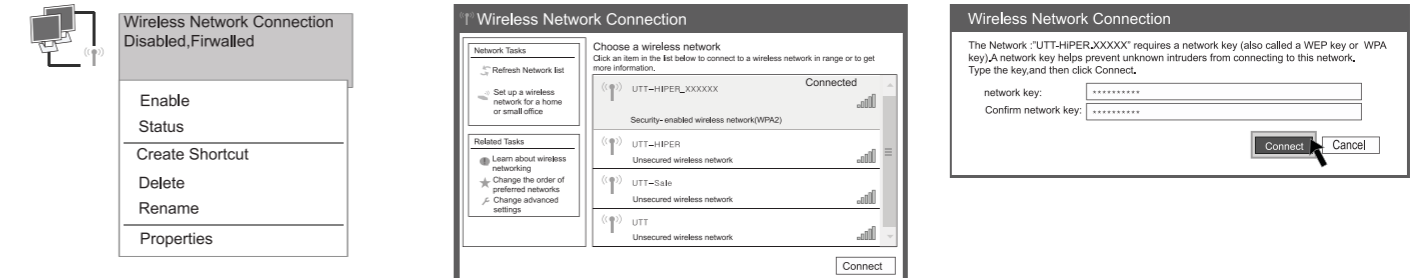
To ensure the security of your wireless network, it is strongly recommended to configure your wireless password, go to "Wireless → Security" page to configure wireless security mode separately.



4 Wireless Network Configuration

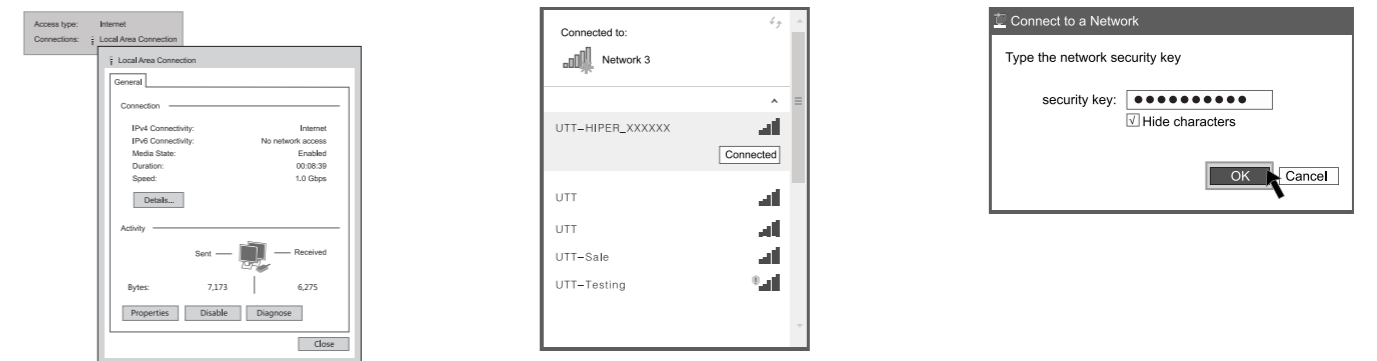
Windows XP

- 1 Click "Start→ Control Panel→ Network and Connection→ Wireless Network Connection",make sure wireless network connection is enabled.
- 2 Click icon in the task bar.Please choose the wireless network you are going to connect in the pop-up list and click "Connect".
- 3 Input wireless password that has been set in the pop-up screen and click "Connect".



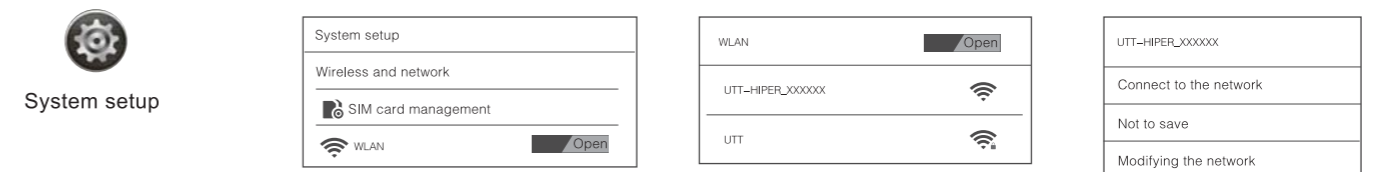
Windows 7

- 1 Click "Start→ Control Panel→ Network and Connection→ Network and sharing centre→Change Adapter Settings",make sure wireless network connection is enabled.
- 2 Click icon in the task bar.Please choose the wireless network you are going to connect in the pop-up list and click "Connect".
- 3 Input wireless password that has been set in the pop-up screen and click "OK".



Android

- 1 Click "System setup".
- 2 Open the WLAN,and click network list.
- 3 Please click the wireless network you are going to connect.
- 4 Click "Connect to the network".



iOS

- 1 Click "setup".
- 2 Click "WLAN".
- 3 Open the WLAN.
- 4 Please click the wireless network you are going to connect.



This device complies with Part 15 of the FCC Rules. Operation is subject to the following two conditions:

1. This device may not cause harmful interference, and 2. This device must accept any interference received, including interference that may cause undesired operation.

Note: This equipment has been tested and found to comply with the limits for a Class B digital device, pursuant to part 15 of the FCC Rules. These limits are designed to provide reasonable protection against harmful interference in a residential installation. This equipment generates, uses and can radiate radio frequency energy and, if not installed and used in accordance with the instructions, may cause harmful interference to radio communications. However, there is no guarantee that interference will not occur in a particular installation. If this equipment does cause harmful interference to radio or television reception, which can be determined by turning the equipment off and on, the user is encouraged to try to correct the interference by one or more of the following measures:

—Reorient or relocate the receiving antenna.

—Increase the separation between the equipment and receiver.

—Connect the equipment into an outlet on a circuit different from that to which the receiver is connected.

—Consult the dealer or an experienced radio/TV technician for help.

Caution: Any changes or modifications not expressly approved by the party responsible for compliance could void the user's authority to operate this equipment.

FCC Radiation Exposure Statement

This equipment complies with FCC RF radiation exposure limits set forth for an uncontrolled environment. This equipment should be installed and operated with a minimum distance of 20 centimeters between the radiator and your body.