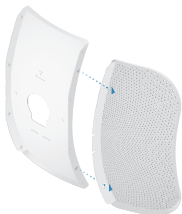


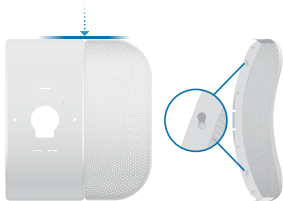
## Hardware Installation

The LiteBeam AC was designed for outdoor use and quick mounting on a pole.

1. Assemble the antenna reflector by attaching the *Side Reflector Panels* to the *Center Reflector Panel*:
  - a. Insert the heads of the two mounting studs on the *Center Reflector Panel* into the large opening of the slotted holes of the *Side Reflector Panel*.

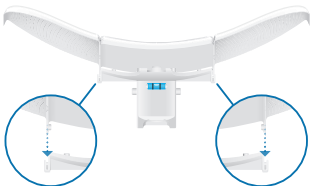


- b. Slide the *Side Reflector Panel* down until the top edges of the panels align. The *Side Reflector Panel* is captured when both heads of the mounting studs are positioned over the narrow opening of the slotted holes.



- c. Repeat the assembly for the other *Side Reflector Panel*.

2. Hold the reflector assembly by hand (do not use a tabletop or flat surface) and insert the *Feed Receiver* into the reflector assembly to secure the panels:
- Align the arrows on the *Center Reflector Panel* and the *Feed Receiver*, and insert both edges of the *Side Reflector Panels* and *Center Reflector Panels* into the *Securing Arms* of the *Feed Receiver*.



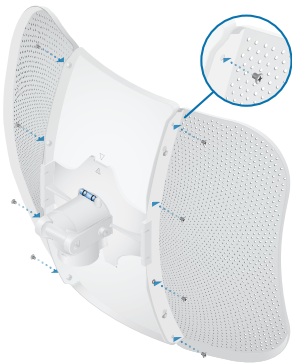
- Insert the *Feed Receiver* into the *Center Reflector Panel* by pressing the top and bottom snap hooks into the slots of the *Center Reflector Panel*.



- !** **WARNING:** Do not install the *Feed Receiver* into the reflector assembly by pushing down onto a tabletop or other flat surface as this can deform the panels. Hold the reflector assembly by hand.



- c. For additional support, there are eight machine screws that secure the *Side Reflector Panels* to the antenna assembly.



3. Insert the *Antenna Feed* into the *Feed Receiver* until the feed locks into place.



4. Turn the *Port Cover* counterclockwise to reveal the *Ethernet Port* on the *Antenna Feed*.

