

5. Take one end of an Ethernet cable and push it through the rubber housing on the *Port Cover* and connect it to the *Ethernet Port*.



6. Reattach the *Port Cover* to the *Feed Receiver* by turning it clockwise until it is secure.

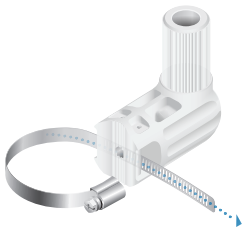


## Pole Mounting

1. Attach the *Elevation Mount* to the *Feed Receiver* by lining up the notches with the pins on the *Feed Receiver* and pressing forward until the *Elevation Mount* snaps on.



2. Open the *Metal Strap* and feed it through the slot of the *Azimuth Mount*.



3. Wrap the *Metal Strap* around the pole. Use a 7 mm socket wrench or screwdriver to turn the screw clockwise and securely fasten the strap to the pole.



4. Attach the *Elevation Mount* to the *Azimuth Mount* as shown below. Do not tighten the *Wingnuts* completely until the LiteBeam assembly has been adjusted and aimed properly.



5. Aim the *Antenna Feed* toward the other end of the wireless link. Use the bubble level on the back of the *Feed Receiver* to ensure proper level alignment.



6. Lock the aim by hand-tightening the *Wingnuts* clockwise on both the *Elevation Mount* and the *Azimuth Mount*.



## Connecting Power

1. Connect the Ethernet cable from the LiteBeam AC to the **POE** port on the *Power Adapter*.
2. Connect an Ethernet cable from your LAN to the **LAN** port on the *Power Adapter*.
3. Connect the *Power Cord* to the *Power Adapter*, and then plug the *Power Cord* to a power outlet.



## Mounting the PoE Adapter (Optional)

1. Remove the *PoE Mounting Bracket* from the adapter, place the bracket at the desired location, and mark the two holes.
2. Pre-drill the holes if necessary, and secure the bracket using two fasteners (not included).
3. Align the adapter's slots with the tabs of the *PoE Mounting Bracket*, and then slide the adapter down.



## Accessing airOS via Wi-Fi

Verify connectivity in the airOS Configuration Interface. There are two methods, the UMobile App and Web Portal. Both are available for 15 minutes immediately after you power on the device. If necessary, you can power cycle the LiteBeam AC to re-enable its Wi-Fi.

Proceed to the appropriate instructions:

### UMobile App

1. Download the UMobile app from the App Store (iOS) or Google Play™ (Android).



2. Connect your device's Wi-Fi to the LiteBeam AC SSID named: **LBE-5AC-Gen2:<MAC Address>**



**Note:** Ensure that DHCP is enabled on your Wi-Fi adapter.

3. Launch the app.
4. Tap the LiteBeam 5AC on the *Connections* screen.

