

Hardware Information Guide



LiteStation9 *900MHz Outdoor Wireless Bridge*



System
Processor: MIPS, 180MHz

Ports
Up to (2) RJ-45
(1) MMCX Antenna
(1) u.FI Antenna

Receive Sensitivity

Rate	Level
1 Mbps	-97 dBm, +/- 2dB
2 Mbps	-96 dBm, +/- 2dB
5.5 Mbps	-92 dBm, +/- 2dB
11 Mbps	-92 dBm, +/- 2dB
6 Mbps	-94 dBm, +/- 2dB
9 Mbps	-93 dBm, +/- 2dB
11 Mbps	-92 dBm, +/- 2dB
12 Mbps	-91 dBm, +/- 2dB
18 Mbps	-90 dBm, +/- 2dB
24 Mbps	-86 dBm, +/- 2dB
36 Mbps	-83 dBm, +/- 2dB
48 Mbps	-77 dBm, +/- 2dB
54 Mbps	-74 dBm, +/- 2dB

POE
Up to +18V DC

Dimensions
4x3x0.5 in
0.2 kg

Transmit Power

Rate	Current
1-24 Mbps	26 dBm, +/- 1dB
36 Mbps	24 dBm, +/- 1dB
48 Mbps	22 dBm, +/- 1dB
54 Mbps	21 dBm, +/- 1dB



INSTALLATION INSTRUCTIONS

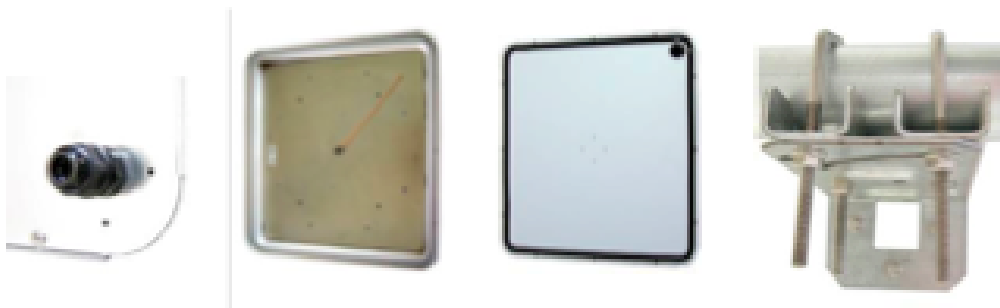
Step 1: Install the Cable Feed thru. The cable feedthru is designed for sealing outdoor rated CAT5 cable. Other cables can be used, just check for good seal.

Step 2: Install cable assembly to the SMA female connector. Install electronics equipment. Install grounding clip by loosening one of the screws on the antenna plate and slipping grounding clip under the screw head and tightening the screw.

Step 3: Install 12 captive screws into the plastic cover. Screws are designed to stay in place once installed. The backpanel comes with an integral gasket attached. Attach the backpanel with the 12 screws. Tighten all the screws lightly, then perform final tightening in a criss-cross pattern so that all screws are tightened evenly.

Step 4: Decide if installation will be Vertically Polarized (VPOL) or Horizontally Polarized (HPOL). The antenna is vertically polarized when the cable feedthru is in the lower left corner. Likewise the antenna is horizontally polarized when the cable feedthru is in the lower right corner. (as viewed from the back of the antenna). **NOTE:** The antenna must always be oriented so that the cable feedthru is on the bottom to avoid any moisture buildup within the compartment.

Step 3: Install the bracket. The pictures below will help in determining the proper bracket orientation to give the desired results.



Regulatory Information

FCC Statement

This equipment has been tested and found to comply with the limits for a Class B digital device, pursuant to Part 15 of the FCC Rules. These limits are designed to provide reasonable protection against harmful interference in a residential installation.

The equipment generates, uses and can radiate radio frequency energy and, if not installed and used in accordance with the instructions, may cause harmful interference to radio communications. However, there is no guarantee that interference will not occur in a particular installation. If this equipment does cause harmful interference to radio or television reception, which can be determined by turning the equipment off and on, the user is encouraged to try to correct the interference by one of the following measures:

- Reorient or relocate the receiving antenna
- Increase the separation between the equipment and receiver
- Consult the dealer or an experienced radio/TV technician for help

To assure continued compliance, any changes or modifications not expressly approved by the party responsible for compliance could void the user's authority to operate this equipment.

FCC Radiation Exposure Statement

This equipment complies with the FCC RF radiation exposure limits set forth for an uncontrolled environment. This equipment should be installed and operated with a minimum distance of 20 centimeters between the radiator and your body.

This device complies with Part 15 of the FCC Rules. Operation is subject to the following two conditions:

- (1) This device may not cause harmful interference, and
- (2) This device must accept any interference received, including interference that may cause undesired operation.

This transmitter must not be co-located or operating in conjunction with any other antenna or transmitter.

The antennas used for this transmitter must be installed to provide a separation distance of at least 20cm from all persons and must not be located or operating in conjunction with any other antenna or transmitter

CAUTION

- 1.) To comply with FCC RF exposure compliance requirements, a separation distance of at least 20cm must be maintained between the antenna of this device and all persons.
- 2.) This transmitter must not be collocated or operating in conjunction with any other antenna or transmitter

Limited End User Product Warranty

Pursuant to all provisions described herein, Ubiquiti Networks products are warranted for (1) year from the date of purchase against defects in the build materials and workmanship. Ubiquiti or its reseller shall use commercially reasonable efforts to promptly correct a nonconformity.

The above warranty is void if the alleged defect cannot be verified by Ubiquiti or if, as determined by Ubiquiti, the product failure was due to tampering, abuse, misuse, accident, shipping, handling, or storage; or if the product has been installed, used, or maintained in a manner not described in the product user manual, if the product has been altered in any way, or if product serialization has been altered. Any attempt to disassemble or repair the product by anyone other than Ubiquiti immediately voids this warranty.

This warranty applies only to the original End User purchaser of the product and may not be transferred to any other individual or entity.

By using the product, the original End User purchaser agrees to and is bound by these terms and conditions. In the event that a product fails to meet this warranty and Ubiquiti's authorized reseller is notified in writing of such failure within the warranty period, Ubiquiti shall, at its own discretion, either repair the product or replace it with the same or a functionally-equivalent product free of charge. Replacement products may contain refurbished materials in whole or in part. Ubiquiti will honor this warranty provided the product is returned through an authorized Ubiquiti reseller or dealer with shipping charges prepaid, along with a proof of purchase describing the original purchase date and product serial numbers if applicable. The authorized reseller must acquire a Return Materials Authorization (RMA) number from Ubiquiti prior to returning any product. Ubiquiti does not accept shipments of defective products without shipping charges prepaid.