



**UniFi<sup>®</sup>**  
**WiFi BaseStationXG**

Quad-Radio 802.11ac  
Wave 2 Access Point with  
Dedicated Security and  
Beamforming Antenna

Model: UWB-XG-BK

QUICK START GUIDE

# Introduction

Thank you for purchasing the Ubiquiti Networks® UniFi® Quad-Radio 802.11ac Wave 2 Access Point with Dedicated Security and Beamforming Antenna. This Quick Start Guide is designed to guide you through installation and includes warranty terms.



**IMPORTANT:** The UWB-XG-BK requires the UniFi Controller v5.7 or higher, available at: [www.ubnt.com/download/unifi](http://www.ubnt.com/download/unifi)

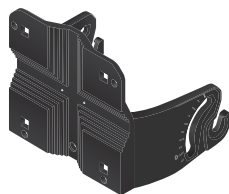
## Package Contents



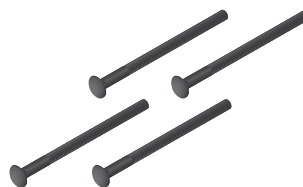
UniFi Wi-Fi BaseStation



Adjustment Bracket



Pole Clamp



Carriage Bolts  
(Qty. 4)



Flange Nuts  
(Qty. 4)



Lag Screws  
(Qty. 4)



Gigabit PoE  
(50V, 1.2A)



Power Cord



Quick Start  
Guide

**TERMS OF USE:** Ubiquiti radio devices must be professionally installed. Shielded Ethernet cable and earth grounding must be used as conditions of product warranty. TOUGH Cable™ is designed for outdoor installations. It is the professional installer's responsibility to follow local country regulations, including operation within legal frequency channels, output power, and Dynamic Frequency Selection (DFS) requirements.

## Installation Requirements

- 13 mm wrench
- Category 5 (or above) UTP cable



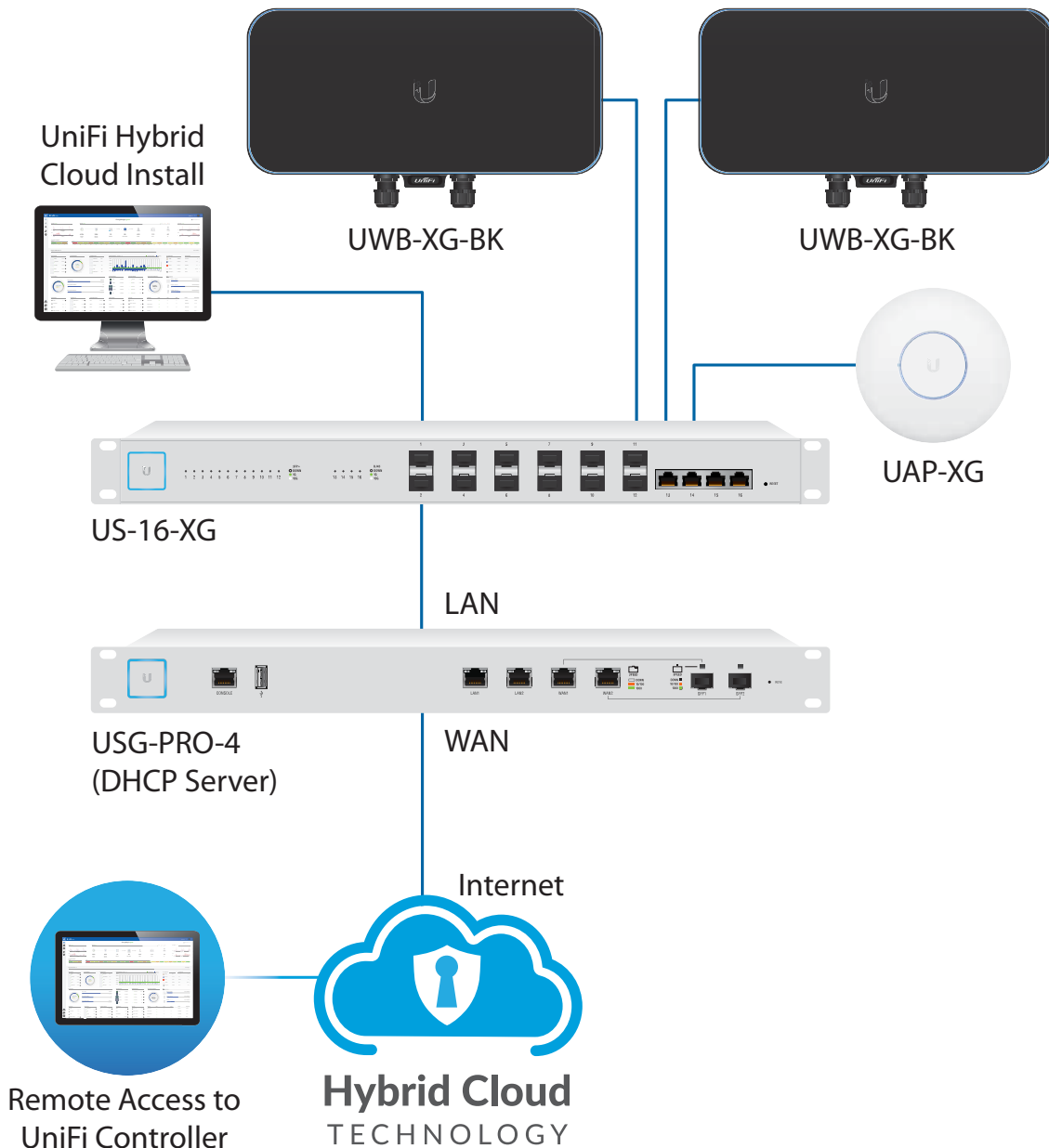
**Note:** The UWB-XG model may be installed indoors or outdoors; however, the UWB-XG-BK model must only be installed indoors. Due to its darker color, it can potentially overheat if installed outdoors.

## System Requirements

- Linux, Mac OS X, or Microsoft Windows 7/8/10
- Java Runtime Environment 1.8 or above recommended
- Web Browser: Google Chrome (Other browsers may have limited functionality.)
- UniFi Controller software v5.7 or newer (available at: [www.ubnt.com/download/unifi](http://www.ubnt.com/download/unifi))

## Network Topology Requirements

- A DHCP-enabled network (for the AP to obtain an IP address as well as for the wireless clients after deployment)
- A UniFi Cloud Key or management station running the UniFi Controller v5.7 (or newer) software, located either on-site and connected to the same Layer 2 network, or off-site in the cloud or NOC

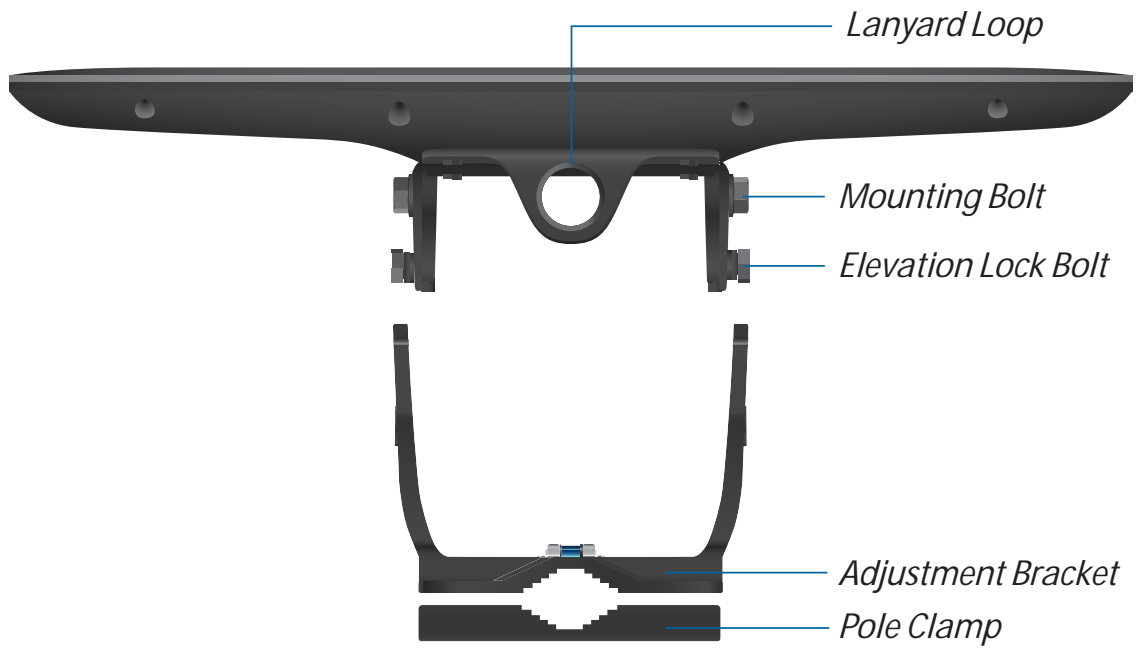


*Sample Network Diagram*

All UniFi devices support off-site management controllers. For setup details, see the User Guide on the website: [www.ubnt.com/download/unifi](http://www.ubnt.com/download/unifi)

# Hardware Overview

## Top View



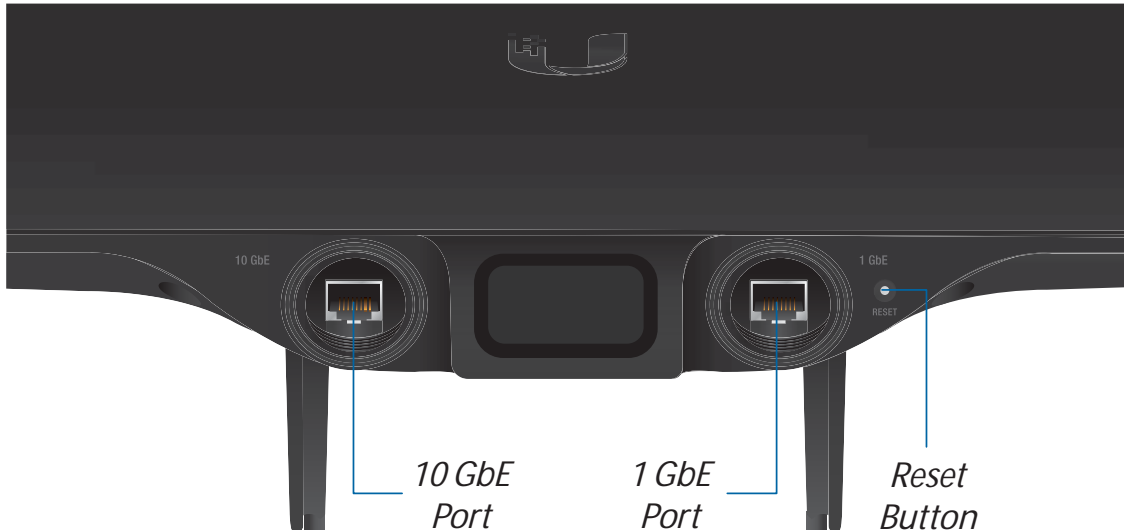
## LED

The RGB LED is set to the factory defaults below; however, the color and lighting pattern are software-controllable.



LED Color	Status
White	Factory default, waiting to be integrated.
Flashing White	Initializing.
Alternating White/Blue	Device is busy; do not touch or unplug it. This usually indicates that a process such as a firmware upgrade is taking place.
Blue	Indicates the device has been successfully integrated into a network and is working properly.
Quickly Flashing Blue	This is used to locate an AP. When you click <b>Locate</b> in the UniFi Controller software, the AP will flash. It will also display the location of the AP on the map.
Steady Blue with Occasional Flashing	Indicates the device is in an isolated state (all WLANs are brought down until an uplink is found).

## Ports



**10 GbE** The *10 GbE* port is a 1/10 Gbps Ethernet port used to connect to the LAN and DHCP server. It can also be used to connect the power.

**!** **Note:** The UWB-XG-BK can be powered using an 802.3bt PoE switch or the included *Gigabit PoE* adapter. For instructions, see *Powering the UniFi AP*.

**1 GbE** The *1 GbE* port is a 10/100/1000 Ethernet port used for bridging. It can also be used to connect the power.

**Reset** The *Reset* button serves two functions for the UWB-XG-BK:

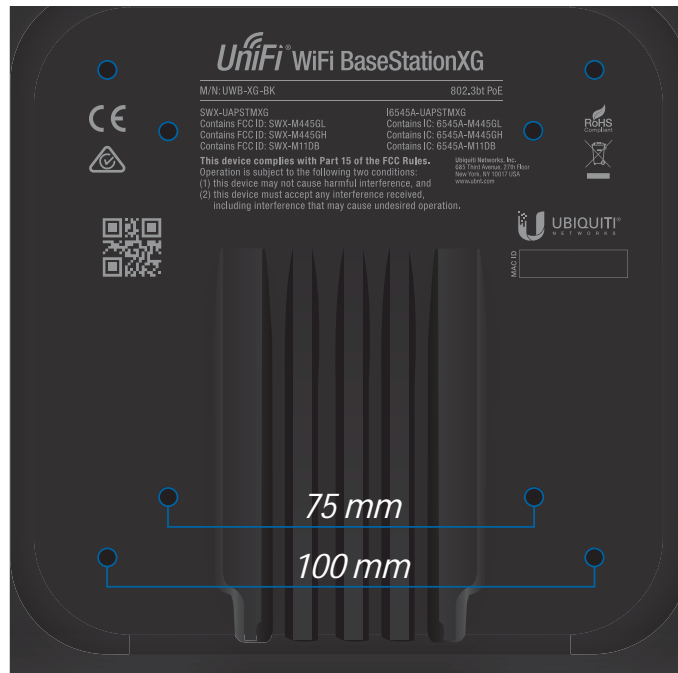
- **Restart** Press and release the *Reset* button quickly.
- **Restore to Factory Default Settings** Press and hold the *Reset* button for more than five seconds.

## VESA Mounting

If you choose to use your own mount, remove the four M4 x 10 screws from the back of the UWB-XG-BK and detach the pre-installed mount.



The 8-hole mounting pattern on the back of the UWB-XG-BK follows the VESA MIS-D standard and can be used with mounts that comply with this standard. Use either the 100 x 100 mm or 75 x 75 mm square hole pattern with M4 x 10 screws.



640-00366-05



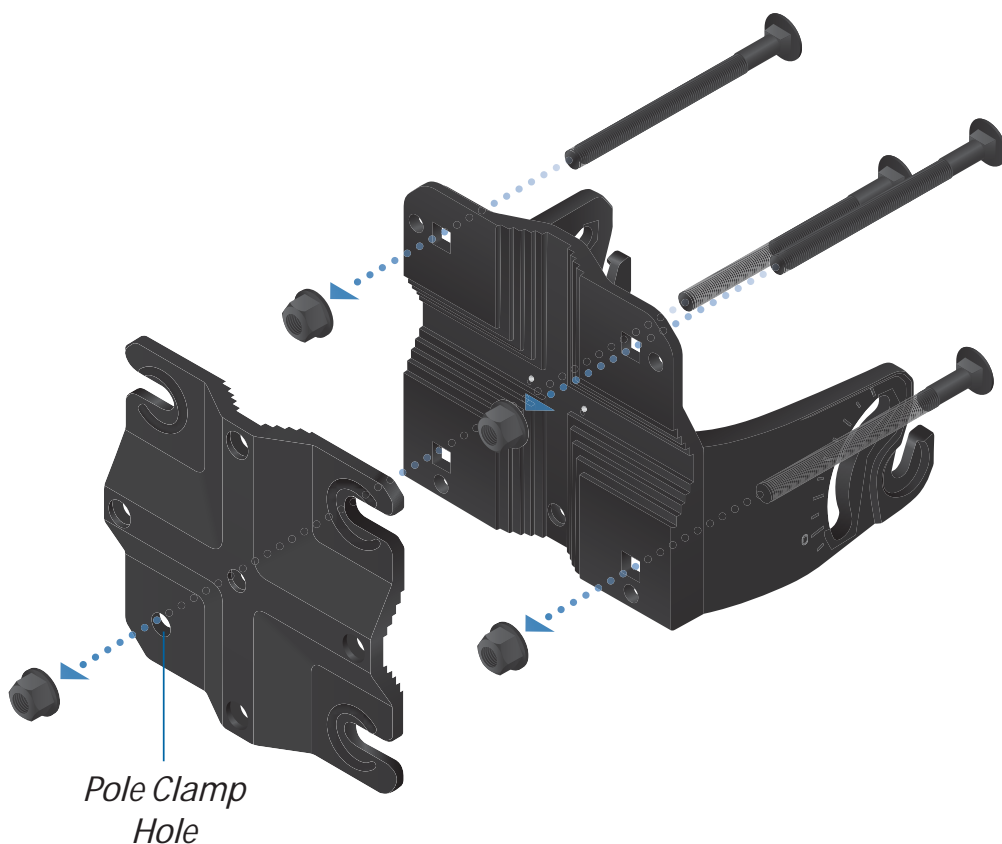
## Hardware Installation

The UWB-XG-BK can be mounted on a pole or wall. Proceed to the appropriate instructions for your installation.

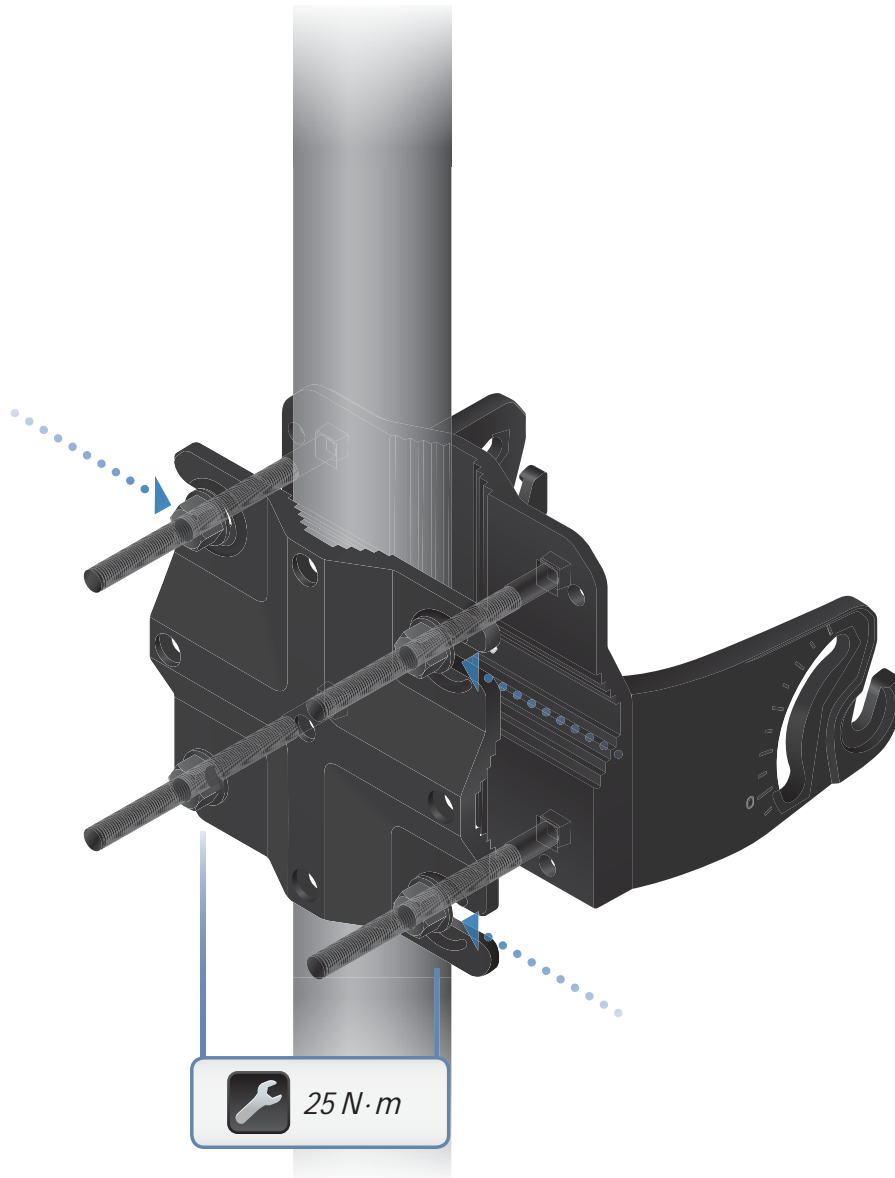
**!** **Note:** The UWB-XG model may be installed indoors or outdoors; however, the UWB-XG-BK model must only be installed indoors. Due to its darker color, it can potentially overheat if installed outdoors.

### Pole Mount

1. Attach the *Pole Clamp* to the *Adjustment Bracket*.
  - a. Hold the *Adjustment Bracket* with its clamps facing you.
  - b. Insert the *Carriage Bolts* through the rectangular holes of the *Adjustment Bracket*.
  - c. Slide the single hole of the *Pole Clamp* over the corresponding *Carriage Bolt*.
  - d. Place one *Flange Nut* on each bolt.

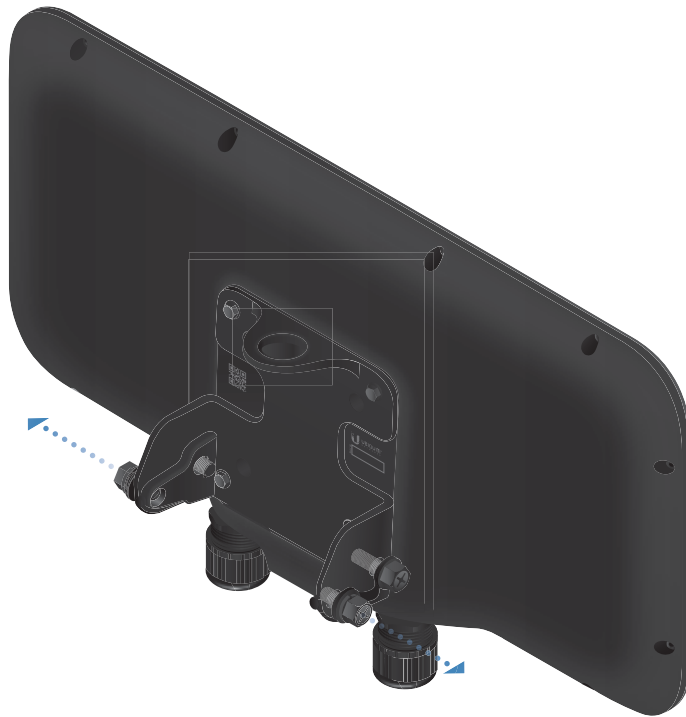


2. Mount the *Adjustment Bracket* on the pole and secure it.
  - a. Place the *Adjustment Bracket* against the pole.
  - b. Slide the three slots of the *Pole Clamp* over the corresponding *Carriage Bolts*.
  - c. Tighten the *Flange Nuts* of the bolts to 25 N·m to secure the *Adjustment Bracket* to the pole.



 **Note:** The mounting assembly can accommodate a Ø 20 - 80 mm pole.

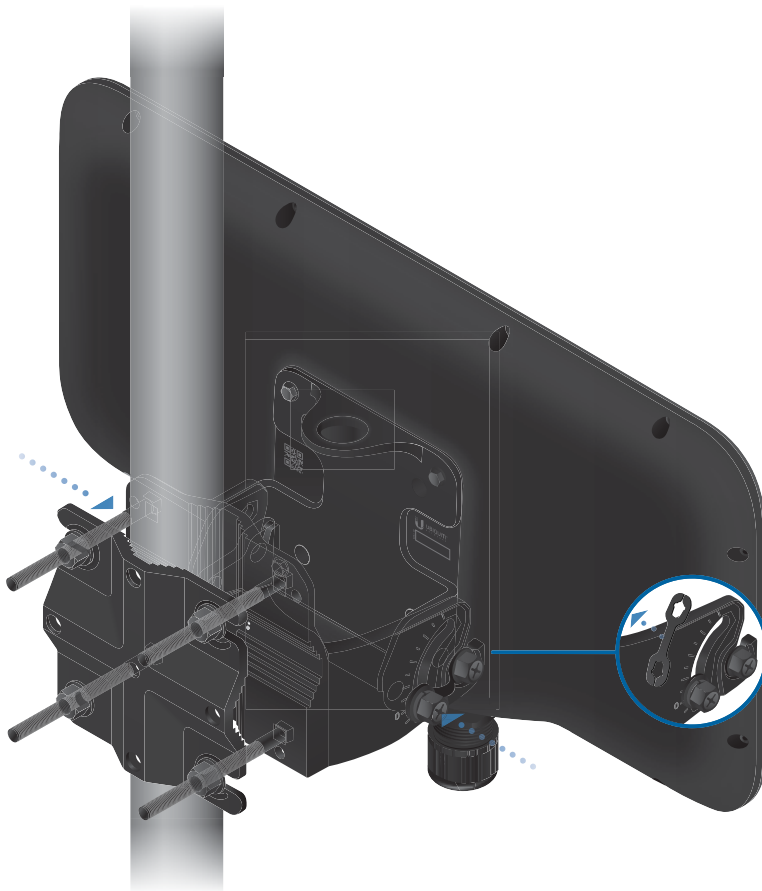
3. Loosen and remove the *Elevation Lock Bolts* on the UWB-XG-BK. (The lanyards will retain the bolts.)



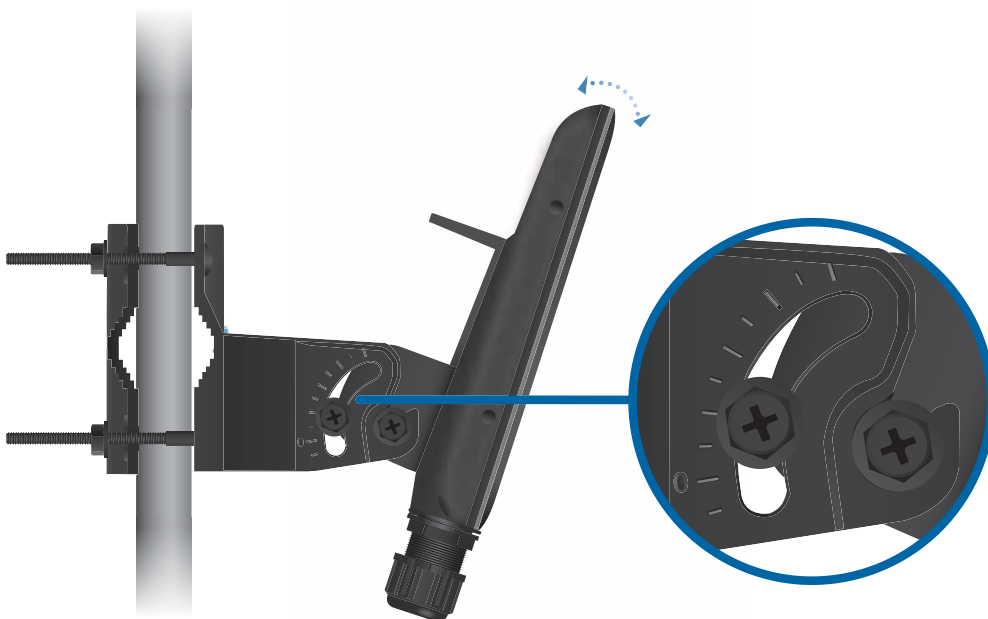
4. Lift the UWB-XG-BK and align the *Mounting Bolts* with the slots on the *Adjustment Bracket*. Seat the *Mounting Bolts* in the slots.



5. Insert the *Elevation Lock Bolts* into the adjustment slots. Remove the lanyards and then tighten the bolts by hand.



6. Pivot the UWB-XG-BK until it reaches the desired elevation angle (+10 to -80°). Then tighten all bolts.



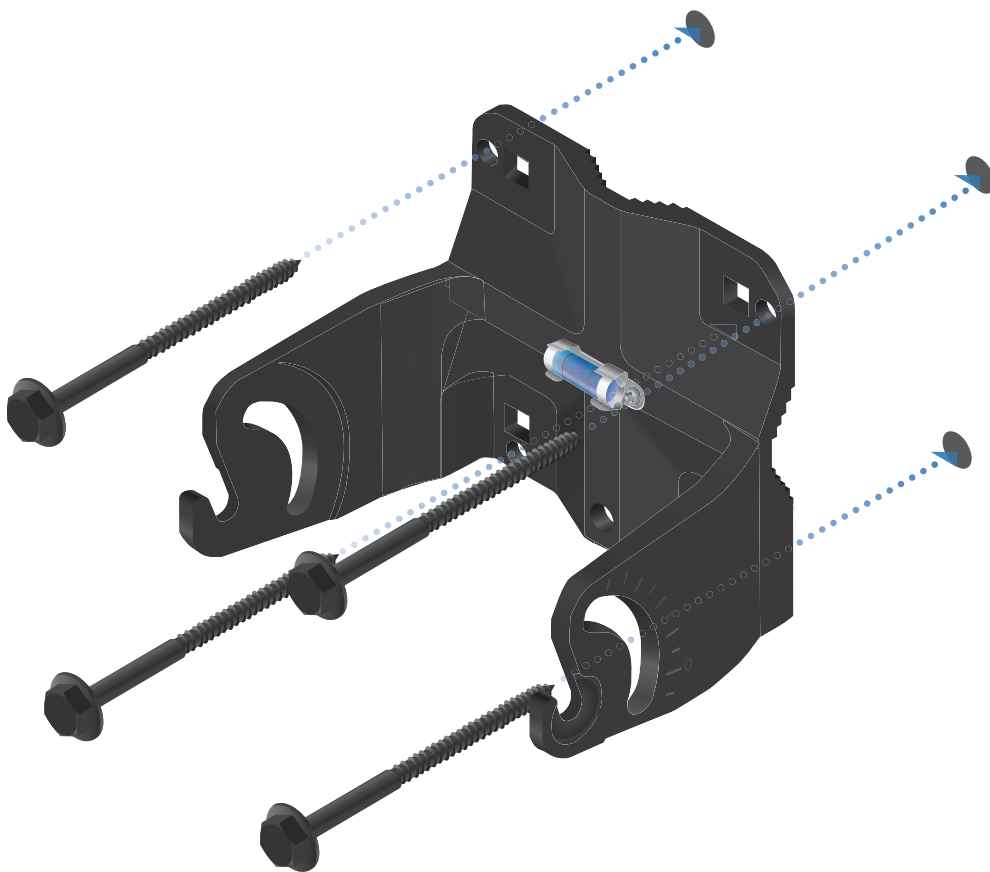
7. Proceed to *Connecting Ethernet*.

## Wall Mount

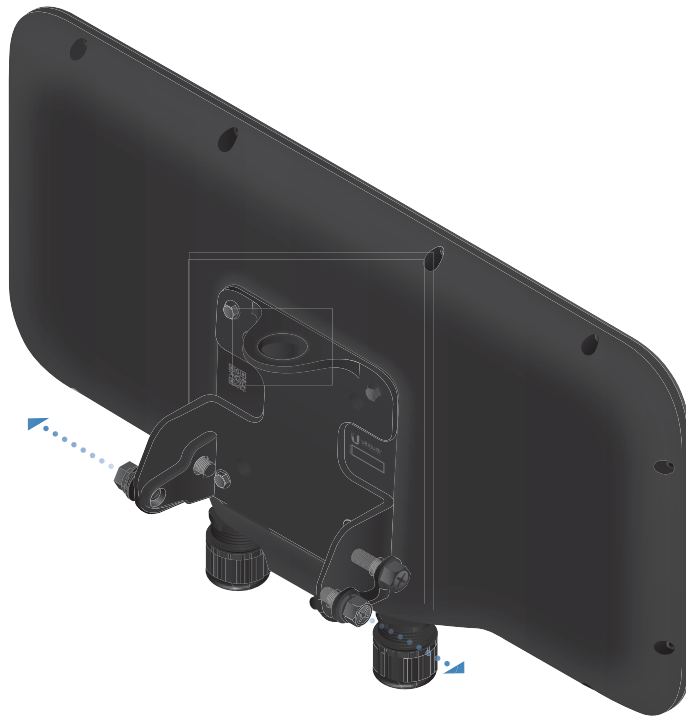
To mount the UWB-XG-BK on a wall, securely attach the *Adjustment Bracket* to the wall using the four *Lag Screws*.

 **Note:** The *Adjustment Bracket* must attach directly to a stud or other stable structure.

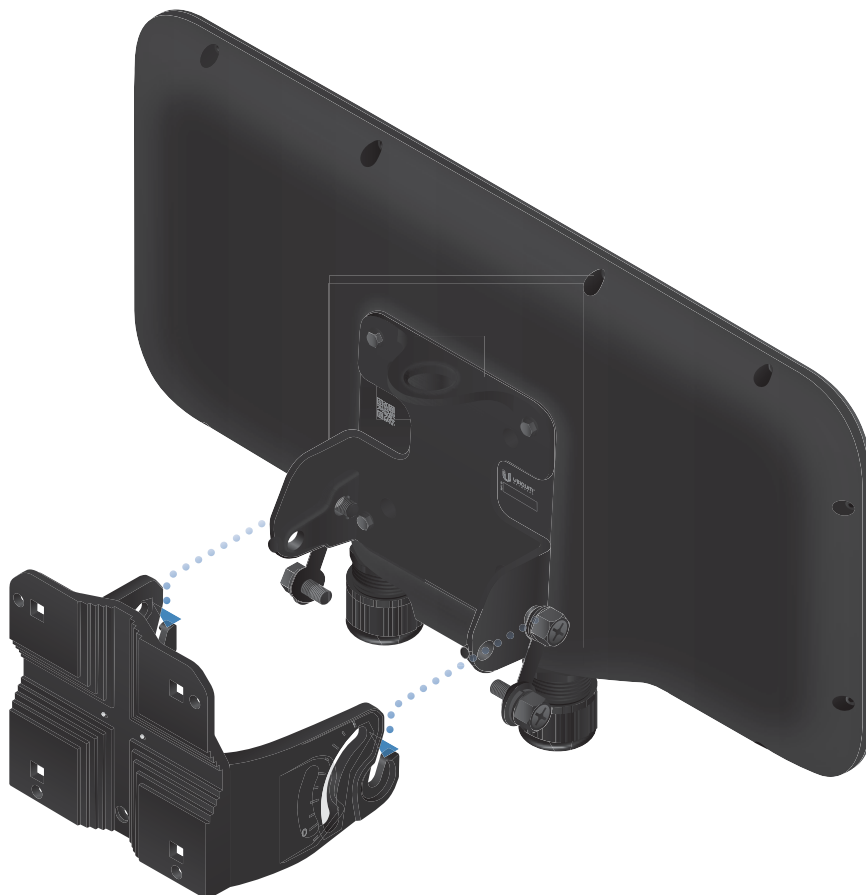
1. Locate the stud.
2. Position the *Adjustment Bracket* on the stud, ensuring that at least two circular holes are centered on the stud.
3. Mark all four circular holes on the wall.
4. Drill pilot holes as necessary.
5. Secure the *Adjustment Bracket* to the wall with four fasteners.



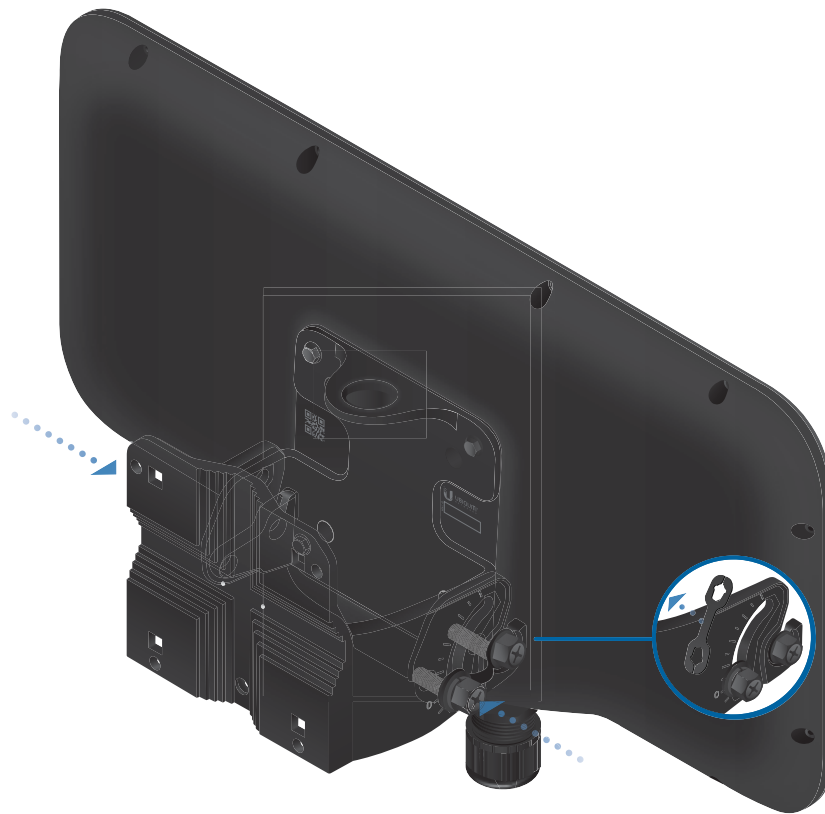
6. Loosen and remove the *Elevation Lock Bolts* on the UWB-XG-BK. (The lanyards will retain the bolts.)



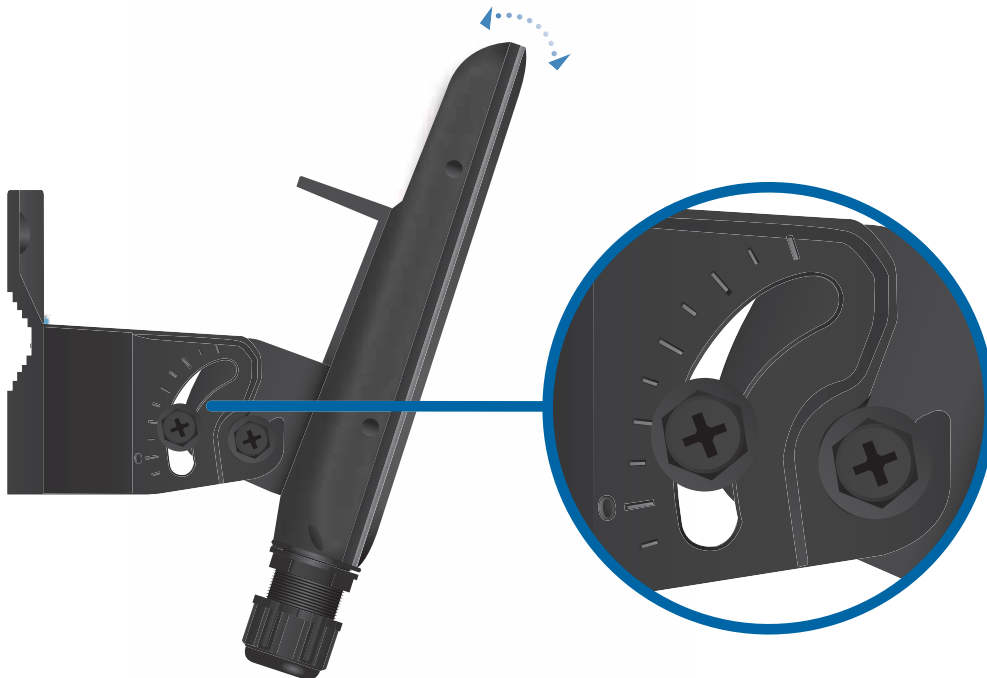
7. Lift the UWB-XG-BK and align the *Mounting Bolts* with the slots on the *Adjustment Bracket*. Seat the *Mounting Bolts* in the slots.



8. Insert the *Elevation Lock Bolts* into the adjustment slots. Remove the lanyards and then tighten the bolts by hand.




9. Pivot the UWB-XG-BK until it reaches the desired elevation angle (+10 to -80°). Then tighten all bolts.

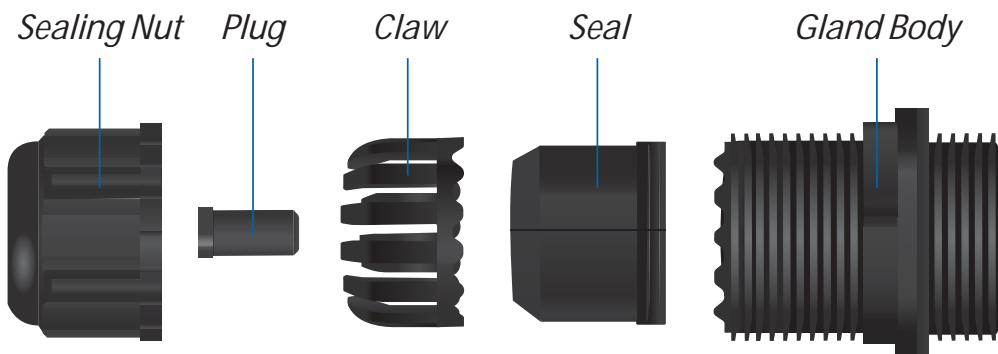


10. Proceed to *Connecting Ethernet*.

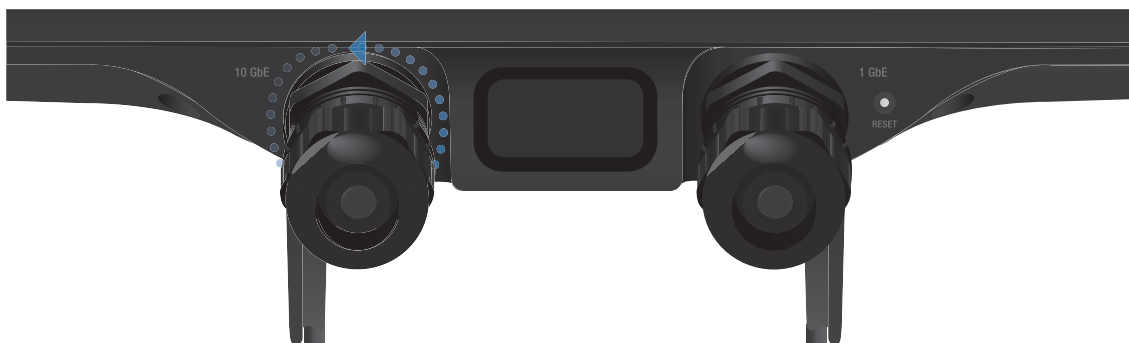
## Connecting Ethernet

 **Note:** If you are using TOUGH Cable, we recommend attaching the TOUGH Cable Connector(s) after you insert the cable(s) into the cable gland(s).

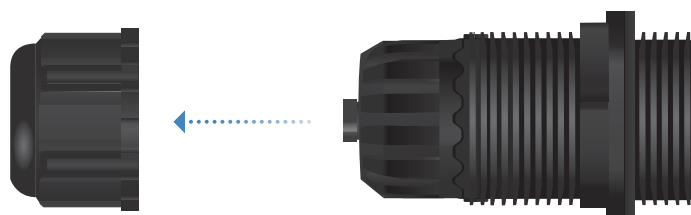
The cable gland is comprised of the following components:



1. Rotate the cable gland counterclockwise to remove it.



2. Rotate the *Sealing Nut* counterclockwise to remove it.



3. Remove the *Seal* with *Claw* from the *Gland Body*.

