



Ubiquiti Networks, Inc.  
 778 N. First St.  
 San Jose, CA 95112  
 (408)-385-1103

# WS5 MANUAL

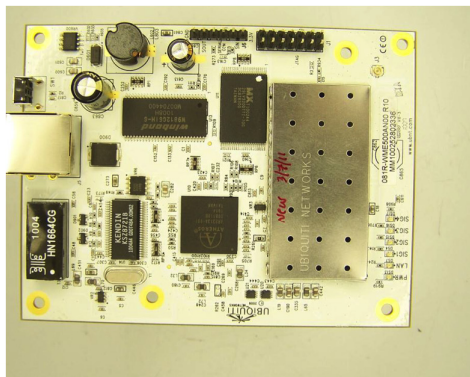
## MODULAR USAGE

The WS5 hi-power mini-PCI 802.11a radio card module has been specifically designed for use in outdoor wireless applications where additional link gain is critical. It is compatible with existing Atheros linux drivers and is capable of operation in the 5725-5850 MHz frequency range. Power and frequency limits are hard programmed into the radio card EEPROM, but card compatibility can be achieved with any Atheros Linux based software.

It is necessary that the system integrators perform all applicable retesting and certification for their final system configurations.

## EXAMPLE OEM SYSTEM USAGE

802.11a Long-Range 5GHz Station



Pac Wireless Roo Tenna Antenna/Enclosure



Software Driver

ATHEROS  
 PUBLIC  
 MADWIFI Driver

© Pacific Wireless



## WS5 IMPORTANT MODULAR APPROVAL INFORMATION

This device is intended only form OEM integrator under the following conditions:

- 1) The antenna must be installed such that 86.2 cm is maintained between the antenna and users, and
- 2) The transmitter module may not be co-located with any other transmitter or antenna.

**IMPORTANT NOTE:** In the event that these conditions cannot be met (for example certain laptop configurations or co-location with another transmitter), then the FCC authorization is no longer considered valid and the FCC ID cannot be used on the final product. In these circumstances, the OEM integrator will be responsible for re-evaluating the end product (including the transmitter) and obtaining a separate FCC authorization.

### End Product Labeling

This transmitter module is authorized only for use in devices where the antenna may be installed such that 86.2 cm may be maintained between the antenna and users (for example access points, routers, wireless ADSL modems, and similar equipment). The final end product must be labeled in visible area with the following:

“Contains TX FCC ID SWX-WS5:

### End Product Manual Information

The user manual for end users must include the following information in a prominent location “**IMPORTANT NOTE:** To comply with FCC RF exposure compliance requirements, the antenna used for this transmitter must be installed to provide a separation distance of at least 86.2 cm from all persons and must not be co-located or operating in conjunction with any other antenna or transmitter.”



## WS5 IMPORTANT OPERATION INFORMATION

### FCC Notice to Users and Operators

NOTE: This equipment has been tested and found to comply with the limits for a Class A digital device, pursuant to part 15 of the FCC Rules. These limits are designed to provide reasonable protection against harmful interference when the equipment is operated in a commercial environment. This equipment generates, uses, and can radiate radio frequency energy and, if not installed and used in accordance with the instruction manual, may cause harmful interference to radio communications. Operation of this equipment in a residential area is likely to cause harmful interference in which case the user will be required to correct the interference at his own expense.

### Safety Information

The Federal Communications Commission (FCC) with its action in ET docket 96-8 has adopted a safety standard for human exposure to RF electromagnetic energy emitted by FCC certified equipment. The AP-ONE meets the uncontrolled environmental limits found in OET-65 and ANSI C95.1, 1991.

The following are guidelines to insure safe operation of the AP-One:

- Do not touch or move the antennas while the unit is transmitting or receiving
- Do not hold any component containing a radio such that the antenna is very close to or touching any exposed parts of the body, especially the face or eyes, while transmitting
- Do not operate the radio or attempt to transmit data unless the antenna is connected, otherwise, the radio may be damaged.

- Use in specific environments:

--Do not operate a portable transmitter near unshielded blasting caps or in an explosive environment unless it is a type especially qualified for such use.

--The use of wireless devices in hazardous locations is limited to the constraints posed by the safety directors of such environments.

--The use of wireless devices on airplanes is governed by the Federal Aviation Administration (FAA)

--The use of wireless devices in hospitals is restricted to the limits set forth by each hospital

- Antenna use

--The antenna(s) used for this device must be installed to provide a separation distance of at least 86.2 cm from all persons and must not be co-located or operating in conjunction with any other antenna or transmitter.