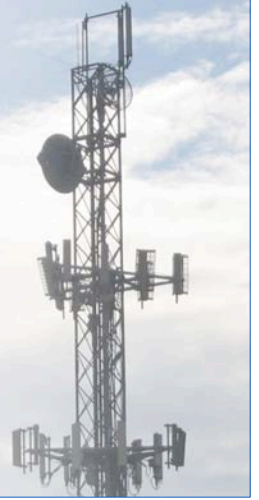
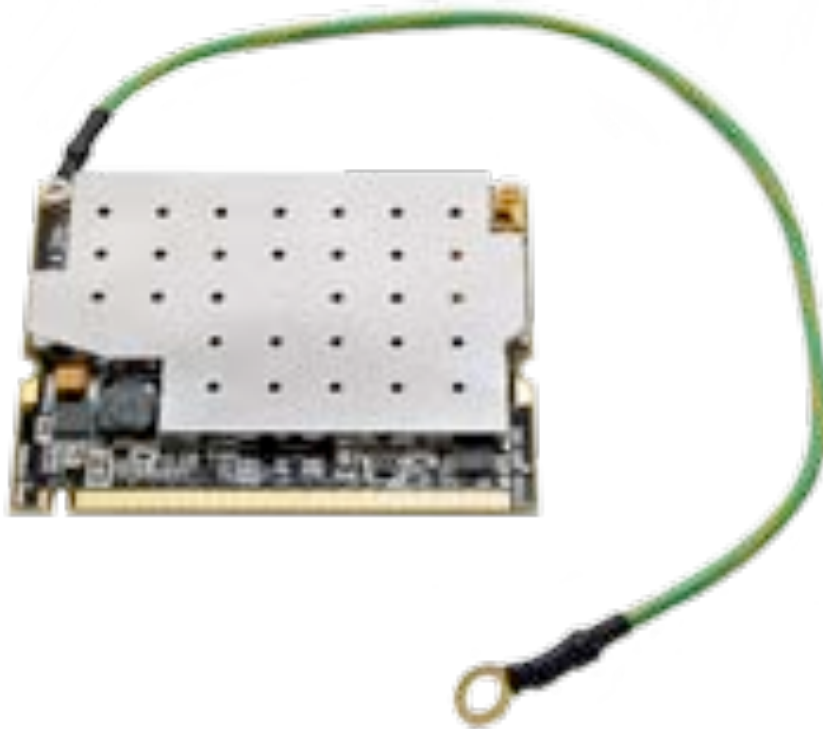




**XTREMERange2**  
Carrier-Class 2.4GHz 802.11b/g Radio Module



# OEM INTEGRATION GUIDE



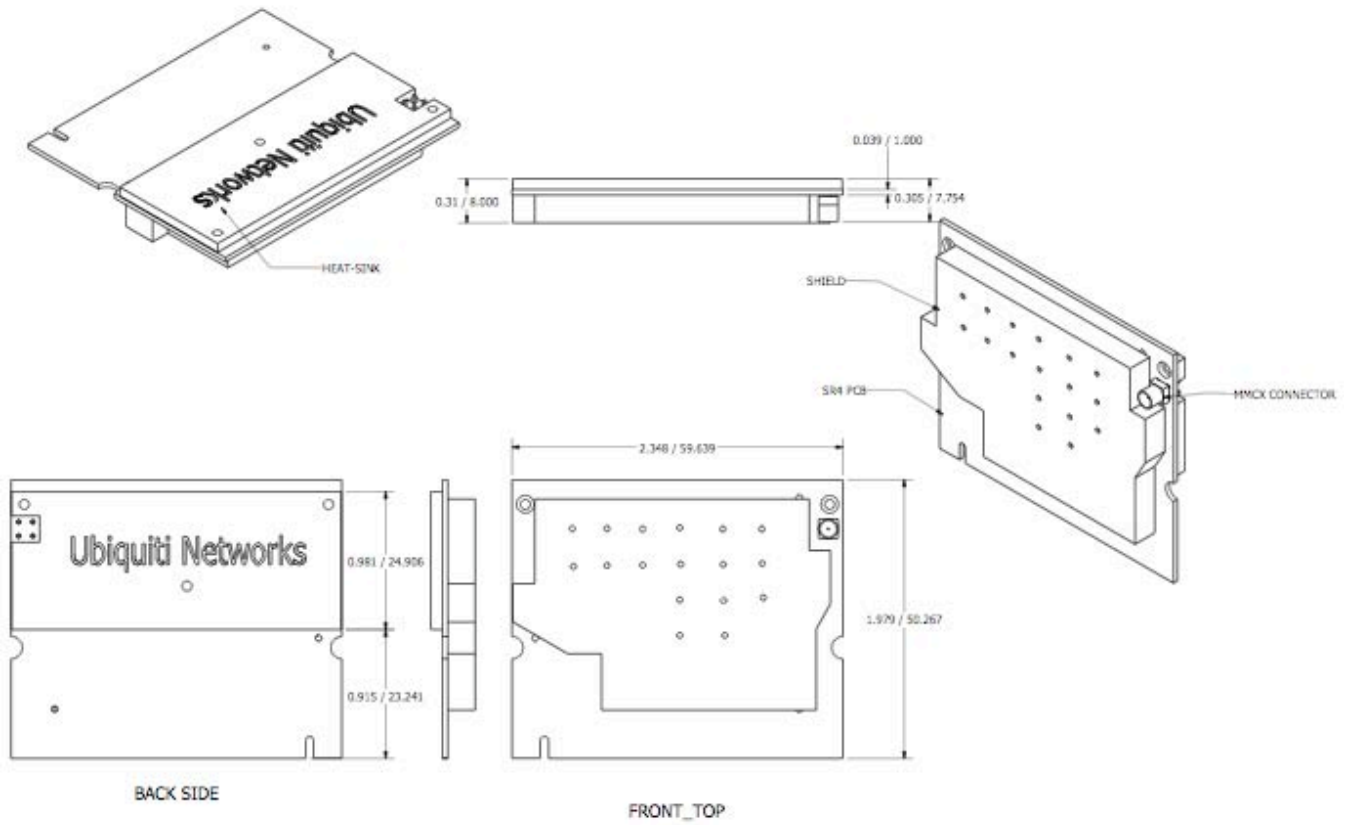
# XTREMERange2

## TECHNICAL SPECIFICATIONS

CARD INFORMATION			
Chipset	Atheros, 6th Generation, AR2316		
Radio Operation	IEEE 802.11b/g, 2.4GHz		
Interface	32-bit mini-PCI Type IIIA		
Operation Voltage	3.3VDC		
Antenna Ports	Single MMCX		
Temperature Range	-40C to +80C (extended temp version up to +95C)		
Security	WPA, WPA2, AES-CCM & TKIP Encryption, 802.1x, 64/128/152bit WEP		
Data Rates	6Mbps, 9Mbps, 12Mbps, 24Mbps, 36Mbps, 48Mbps, 54Mbps		
TX Channel Width Support	5MHz / 10MHz / 20MHz / 40MHz		
RoHS Compliance	YES		
REGULATORY INFORMATION			
Wireless Modular Approvals	FCC Part 15.247, IC RS210		
RADIO OPERATING FREQUENCY 2412-2462 MHz (2312-2732 MHz*)			
TX SPECIFICATIONS		RX SPECIFICATIONS	
	DataRate	TX Power	Tolerance
802.11b	1Mbps	26 dBm	+/-1dB
	2Mbps	26 dBm	+/-1dB
	5.5Mbps	26 dBm	+/-1dB
	11Mbps	26 dBm	+/-1dB
802.11g OFDM	6Mbps	26 dBm	+/-1dB
	9Mbps	26 dBm	+/-1dB
	12Mbps	26 dBm	+/-1dB
	18Mbps	26 dBm	+/-1dB
	24Mbps	26 dBm	+/-1dB
	36Mbps	24 dBm	+/-1dB
	48Mbps	23 dBm	+/-1dB
	54Mbps	22 dBm	+/-1dB
	DataRate	Sensitivity	Tolerance
802.11b	1Mbps	-97 dBm	+/-1dB
	2Mbps	-96 dBm	+/-1dB
	5.5Mbps	-95 dBm	+/-1dB
	11Mbps	-92 dBm	+/-1dB
802.11g OFDM	6Mbps	-94 dBm	+/-1dB
	9Mbps	-93 dBm	+/-1dB
	12Mbps	-91 dBm	+/-1dB
	18Mbps	-90 dBm	+/-1dB
	24Mbps	-86 dBm	+/-1dB
	36Mbps	-83 dBm	+/-1dB
	48Mbps	-77 dBm	+/-1dB
	54Mbps	-74 dBm	+/-1dB
ADJUSTABLE CHANNEL SIZE SUPPORT (Increase Channel Capacity or Increase Throughput)			
5MHz	10MHz	20MHz	40MHz (Turbo)
CURRENT CONSUMPTION INFORMATION			
TX CURRENT CONSUMPTION		RX CURRENT CONSUMPTION	
	DataRate	Current	Tolerance
802.11b	1Mbps	1.30 A	+/-100mA
	2Mbps	1.30 A	+/-100mA
	5.5Mbps	1.30 A	+/-100mA
	11Mbps	1.30 A	+/-100mA
802.11g OFDM	6Mbps	1.30 A	+/-100mA
	9Mbps	1.30 A	+/-100mA
	12Mbps	1.30 A	+/-100mA
	18Mbps	1.30 A	+/-100mA
	24Mbps	1.30 A	+/-100mA
	36Mbps	1.10 A	+/-100mA
	48Mbps	1.00 A	+/-100mA
	54Mbps	0.90 A	+/-100mA
	DataRate	Sensitivity	Tolerance
802.11b	1Mbps	300 mA	+/-100mA
	2Mbps	300 mA	+/-100mA
	5.5Mbps	300 mA	+/-100mA
	11Mbps	300 mA	+/-100mA
802.11g OFDM	6Mbps	300 mA	+/-100mA
	9Mbps	300 mA	+/-100mA
	12Mbps	300 mA	+/-100mA
	18Mbps	300 mA	+/-100mA
	24Mbps	300 mA	+/-100mA
	36Mbps	300 mA	+/-100mA
	48Mbps	300 mA	+/-100mA
	54Mbps	300 mA	+/-100mA
ESD/EMP CABLE SPECIFICATIONS			
Cable Dimensions	8 in length, 0.55mm diameter (26AWG)		
Terminal Material / Dimensions	Copper / 4.3mm diameter		
Attachment Procedure	Ground end to enclosure point tied to Earth Ground		
RANGE PERFORMANCE			
Indoor (Antenna Dependent):	Up to 200meters		
Outdoor (Antenna Dependent):	Over 50km		
DRIVER INFORMATION			
Operating System Support	Linux MADWIFI, WindowsXP, Windows2000		

# XTREMERange2

## MECHANICAL DIMENSIONS



495-499 Montague Expwy.  
Milpitas, CA 95035  
San Jose, CA 95112  
T (408)-942-3085  
F (408)-351-4973  
<http://www.ubnt.com>