

广州雅天科技有限公司  
ARTISTE TECHNOLOGY LTD.

ADD: No. 6 Building, 173#, Dunhe Road, Haizhu  
District, Guangzhou City, Guangdong Province, China  
Telephone: +86-020-66319168  
Mobile Phone: +86-13450 382195  
Web: <http://artiste.en.alibaba.com/>



---

ABH102 Manual



## Product Introduction

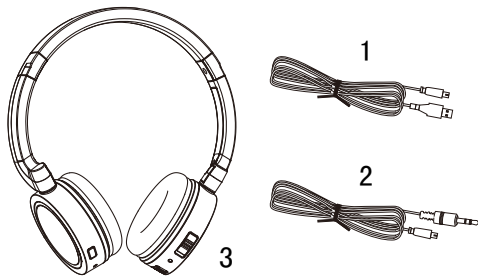
Dear customer:

Thank you for purchasing our high quality electronic product. This product uses international advanced Bluetooth wireless audio transmission technology, which has stable signal ( high frequency modulation, easily to avoid other signal interference), stereo Hi-Fi sound quality, strong versatility etc.. The scope of product: audio devices with Bluetooth , including PC, mobile phone, MP3, notebook, etc..

Note:

1. When pair with the mobile phone ,function of the headset may change according to type of the mobile phone.
2. Some of the equipments , especially those without the Bluetooth Technology Alliance (SIG) testing or approval, may not be compatible with this product.

## Product Overview



1. USB charging cable
2. The LINE IN line
3. Bluetooth headset

Accessories list:

- Use instructions
- Warranty card
- Bluetooth headset
- The LINE IN line

## On/Off

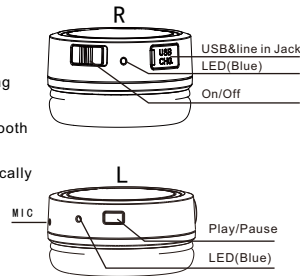
### ■ On

Set the Power switch on the headset to ON to turn on the headset. The headset will have a Beeping sound , Charging LED ( blue ) will be on.

1. It will automatically connect to the last connected Bluetooth device.
2. If there is no device paired with headset, it will automatically enter the standby mode, and turn off after 10 minutes.

### ■ Off

Set the Power switch on the headset to OFF to turn off the headset.



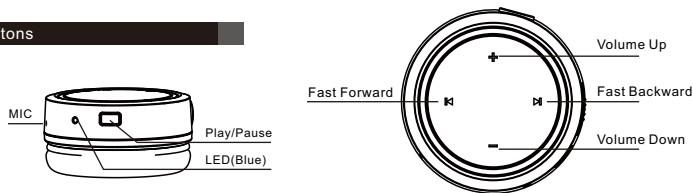
## Pair

You must establish the connection between the headset and a compatible device by pairing before you can start using.



1. Ensure that the mobile device or a music player is on and the headset is closed.
2. Turn on the headset, Press the Pair button on the headset for 5 seconds until the Pairing LED (blue) starts to flash quickly.
3. Activate the Bluetooth® setting of your PC/Laptop, and select “ABH102” (ABH102 is the Bluetooth Headphone identity number of this sample).
4. When prompted and request for passkey, enter “0000” to make the connection of your PC/Laptop to the ABH102 headphone.
5. Once both devices were linked, the Pairing LED (blue) of ABH102, headset will starts to flash slowly.
6. Plays the music with your computer and you can start enjoy the music with the headphone.  
Press the control panel on the headset to control the audio streaming (Fast Forward, Fast Backward, Pause/Play, Volume Up/Down)

#### Buttons



- **Lock/Unlock buttons:**  
Press the PLAY/PAUSE button quickly twice to lock the other buttons and there will be a warning tone. In locked state, only PLAY/PAUSE button is effective, the other buttons are not effective. To unlock buttons, Press the PLAY/PAUSE button quickly twice again.
- **Answer:**  
Press the play / pause button to pick up the call
- **Hung:**  
Press the play / pause button to hung off the call. when you don't want to answer the call, press the play / pause for 3 seconds.

- **Low battery alarm function:** When the battery power is low, the headset will issue a “beep” sound warning to turn off the headset.
  - **Automatically turn off function:** If the headset is not connected with any equipment in about 10 minutes, it will automatically shut down for power saving
  - **Headset reset function:** If the headset stop working, you need to reset the headset, please connect the headset to a charging wire /adapter, then it will reset successfully; If it is in working, when you connect it to a charging wire /adapter, the headset will automatically shut down, at this time please reset it for normal work.
- LINE IN function :** When the USB MICRO is connected to the audio line (3.5MM TO USB MICRO B/M), it will automatically disconnect Bluetooth function and change to LINE IN, used as a wired headset.

#### Wearing



When wearing headset, please pay attention to distinguish between left and right side of the headband. Headset on both sides has a telescopic headband design, you can adjust the headband length for more comfortable. Stretch length was  $30 \pm 1\text{mm}$

**Warning: Using the headset will weaken your ability to hear outside sounds. Therefore, please do not use headset in the condition which may threaten your safety.**

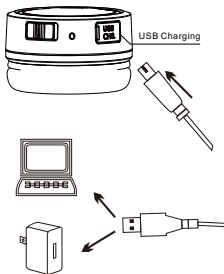
## Charging

1. When it is charging , the green lights.
2. When the charging is completed, the green indicator light is extinguished, charging adapter/wire can be removed.
3. If the battery is completely run out , it may take several minutes for charging light to indicate the state of charge; When the charging cable is not in use, please disconnect it with the device. Excessive charging will shorten battery life.
4. If you have a fully charged battery without using , the battery will discharge by itself after a period of time;
5. The headset can be used when charging.

Note:

The headset is built with non removable and rechargeable battery inside, do not remove the battery or so as not to damage the headset .

When charging for first time ,it should be charged for more than 12 hours and less than 24 hours, which can activate the battery in best status. After that, charging only needs 2-3 hours (do not charge more than 24 hours, or it will damage the battery life)



## Specifications

Bluetooth®: V2.1 + EDR

Transmission Mode: GFSK

Operating voltage: 3.7 V

Signal-to-noise ratio: > 80 dB

Channel separation: >30 dB

Frequency response: (-3dB) 35Hz-18KHz

Operating Time: 8 hours

Standby time: 10 hours

Out Power: 8mW

Distortion: <1%

## Safety

In order to obtain the best sound effects, please pay attention to distinguish between left and right side of the headband.

Do not disassemble the hardware; use dry and soft cotton to clean the headset etc.

We recommend you take the following preventive measures to prevent hearing loss :

If the volume is too large, may cause hearing loss.

Adjust the appropriate volume from the minimum, increase slowly until the sound is comfortable, clear and without distortion. If in a comfortable volume, you have tinnitus or discomfort , please turn down the volume or stop to listen and check the hearing status.

**Warning: Wireless transmission will produce electromagnetic signal, please pay attention to use the headphone when you have cardiopacemaker or related auxiliary instrument.**

## Troubles

A: Not successfully matched :

1. Confirm the connection device with Bluetooth function has been opened and work;
2. Check whether the headset battery power is insufficient;
3. Do not open the too many Bluetooth headsets or Bluetooth devices at the same time, to prevent interference;
4. Confirm the headset is in pairing state and input Bluetooth headset the password correctly;
5. If the above method still can not solve this problem, reset the headset, pair it by description

B. Cannot listen to music or call by headset:

1. Increase the headset volume;
2. Confirmed the device has been successfully connected