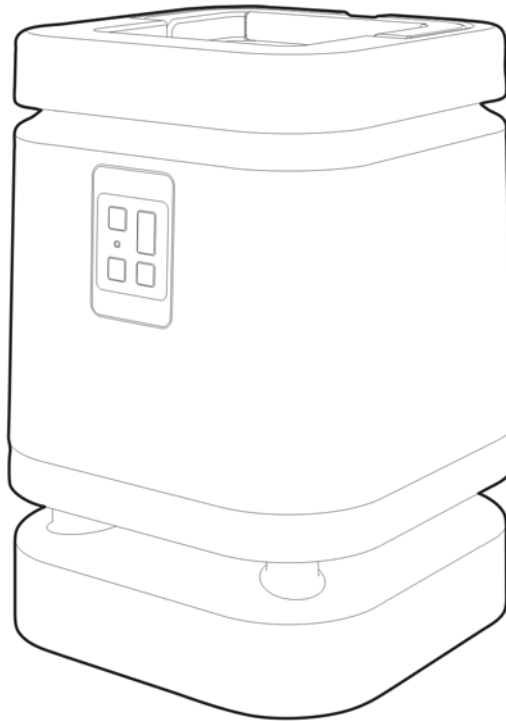


**BS202**  
**Bluetooth Speaker**



**User's Manual**  
**Please read before using the equipment**

## **INTRODUCTION**

This Bluetooth Speaker System uses the latest Bluetooth technology that enables you to enjoy music and enhances TV sound anywhere inside your house. You can simply pair the system to Bluetooth Device such as iPhone, iPad, iPod Touch, Smartphone and Mobile, or even directly connect the system to any audio source such as Panel TV, DVD, and Hi-Fi/CD/MP3...etc. Without complicated wiring and installation with your Audio/Video equipments and rear channel amplifier, the system enables you to enjoy thrilling, lifelike sound stereo in minutes.

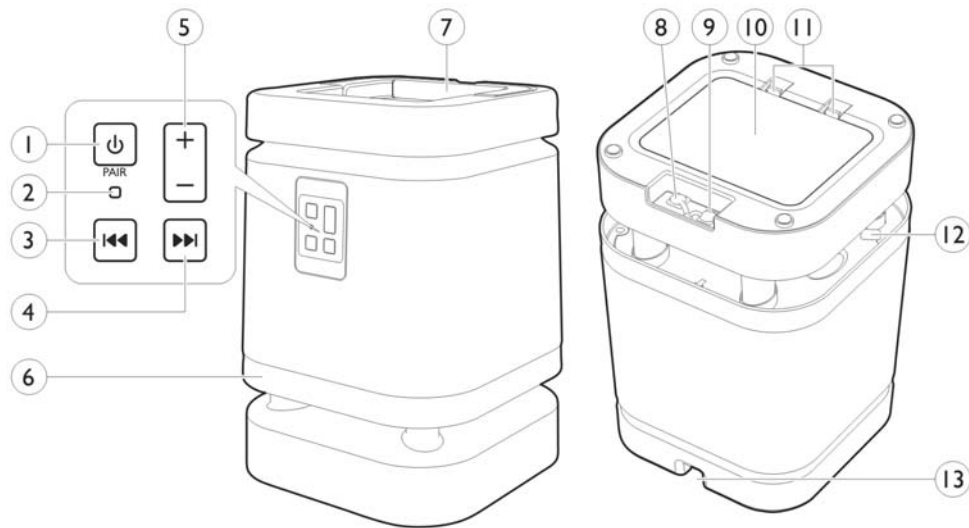
## **FEATURES**

- Bluetooth V2.1+EDR
- Work wirelessly in Bluetooth or Direct Line-In with Cable
- Bluetooth technology lets you roam freely throughout your house and garden
- No Limitations in Line of Sight
- Virtually interference free audio quality
- Can be operated by AC Power or DC Batteries
- Foldable Handle
- LED MoodLight
- Operating distance up to 10 Meters (open area)
- Dual Light Indication (Bluetooth - Blue, Direct Line-In - Green)

## **PACKAGE INCLUDES**

- 1 x Speakers
- 1 x AC/DC 9V 1.2A Power Adaptor for Speaker
- 1 x 1.5M Long Audio Cable
- 1 x Short "Y-Cord" RCA Adapter Cable. (Optional)

## **COMPONENT IDENTIFICATION**



- |                               |                          |
|-------------------------------|--------------------------|
| 1. Power On/Off               | 8. 3.5mm Direct Audio-In |
| 2. LED Indicator (Green/Blue) | 9. DC In                 |
| 3. Previous/Fast Backward     | 10. Battery Door         |
| 4. Next/Fast Forward          | 11. Battery Door Lock    |
| 5. Volume Control             | 12. Mood Light Emitter   |
| 6. Mood Light Fringe          | 13. Drainage             |
| 7. Handle                     |                          |

## **INSTALLATION**

This Speaker can be operated either by connecting to a AC/DC Power Adapter (Fig.1) for sustained playing **or** by 6 pieces of D Size 1.5V Batteries (Fig.2) for greatest portability, make sure the batteries is inserted with correct polarity. Note that this Speaker is **NOT** able to charge any batteries.

Fig.1

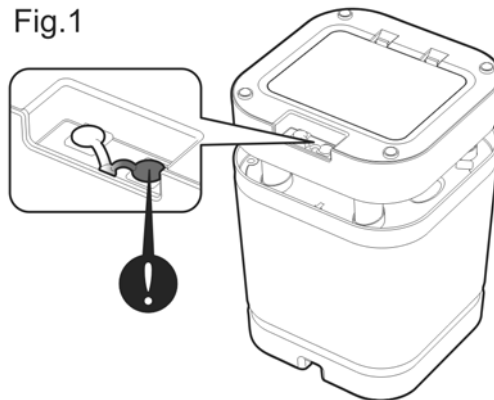
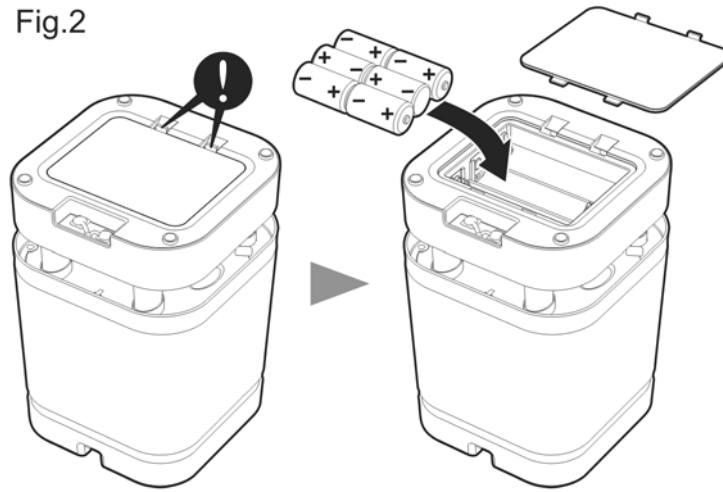


Fig.2



### **BLUETOOTH PAIRING**

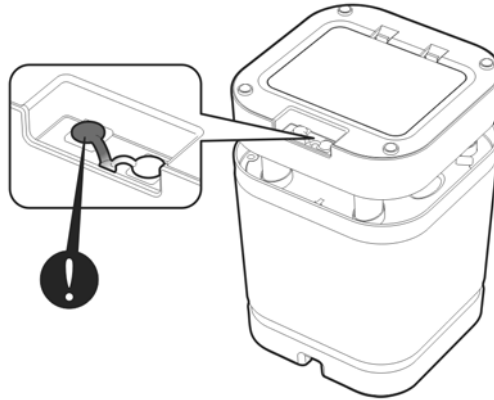
1. Press and hold the Power On/Off Button for approximately 6 seconds
2. Turn on the speaker system by pressing the POWER button, Indicator Bar then glows in Blue.
3. When pairing the system to Bluetooth Source Device (e.g. Mobile Phone), press Pairing button once, Indicator Bar then blinks in Blue. Select the system name "**AR SPEAKER**" that shows on the pairing list. Default Pairing Code is "0000".
4. When the Speaker and Bluetooth Source Device are successfully paired up, the Indicator Bar then glows steadily in Blue.

### **OPERATION**

1. Switch on the Speaker by Pressing the Power Button once, Indicator Bar then glows in Blue.
2. Switch on the Bluetooth Source Device (e.g. Mobile Phone) to which the Speaker is paired up. Play Music from the Bluetooth Source Device, and adjust Master Volume to Middle.
3. Music should be heard from the Speaker, adjust the Volume from the Speaker to desired level by pressing **+** and **-**.
4. If the Volume Intensity from the Speaker is too weak, adjust the Master Volume from the Bluetooth Source Device accordingly.
5. To switch off the Speaker, simply press the Power button once again.

## **DIRECT LINE-IN**

1. This Speaker System, at the same time, can also work as a conventional Wired Stereo Speaker with Direct Line-In to your Panel TV. or other Audio Devices. Simply by connecting the 3.5mm Audio Cables from the rear of the Speaker System to your Music Source.
2. When the Circuit inside the Speaker detects the Signal from Direct Line-In, the Indicator Bar then glows steadily in Green.



## **TROUBLE SHOOTING**

### ***No Sound***

- Ensure the AC adaptor is fully inserted into the AC outlet and the power connection input on the transmitter.
- Ensure the speaker system and Bluetooth device has been paired up.
- Ensure the speaker system is switched ON.
- Ensure the TV or audio component is ON.
- The connected audio / video equipment is not playing. Start playing the equipment.
- The volume of speaker system is too low, adjust the volume to an appropriate level.

### ***Distorted***

- Ensure the volume level of speaker is adjusted properly.
- The speaker system is too far away from the Bluetooth device, move them closer.

## **TECHNICAL SPECIFICATIONS**

Transmission Mode	: Bluetooth® V2.1 + EDR
Carrier Frequency	: 2.402~2.480GHz
Operation Voltage	: Speaker, AC/DC 9V 1.2A Power Adaptor, <b>or</b> 6 X 'D' size Alkaline Batteries (not included)
Frequency Response	: 50Hz – 12KHz
Distortion	: 1.5%
S/N Ratio	: 65dB
Channel Separation	: 30dB
Operation Distance	: Up to 10 meters (open area)
Output Power	: 5W (RMS)

### **WARNING:**

1. Batteries (battery pack or batteries installed) shall not be exposed to excessive heat such as sunshine, fire or the like.
2. Any attempt to open the housing may damage this device and cause electric shock.
3. The AC/DC Power Adaptor provided is designed for this device only. Do not use the provided AC/DC Power Adaptor with other devices.
4. Check whether the Voltage of the Local Mains corresponds to the Voltage Indicated on the supplied AC/DC Power Adapter.
5. Remove all the batteries when AC/DC Power Adaptor is used.
6. Do not touch the metal contacts of the AC/DC Power Adapter.
7. Do not use this device in Water.
8. This product shall not be exposed to dripping or splashing and that no objects filled with liquids, such as vases, shall be placed on the product.
9. Where the mains plug is used as the disconnect device for the product, the disconnect device shall remain readily operable.
10. Disconnect the AC/DC Power Adaptor from the Mains, when this device is not in use for prolonged time.
11. Exposed to Excessive Volume may cause Permanent Hearing Damage.