

Cordless Stereo 900MHz Headphone System



User's Manual

This device complies with Part 15 of the FCC Rules.

Operation is subject to the following two conditions:

- (1) this device may not cause harmful interference, and**
- (2) this device must accept any interference received, including interference that may cause undesired operation.**

NOTE: THE MANUFACTURER IS NOT RESPONSIBLE FOR ANY RADIO OR TV INTERFERENCE CAUSED BY UNAUTHORIZED MODIFICATIONS TO THIS EQUIPMENT. SUCH MODIFICATIONS COULD VOID THE USER'S AUTHORITY TO OPERATE THE EQUIPMENT.

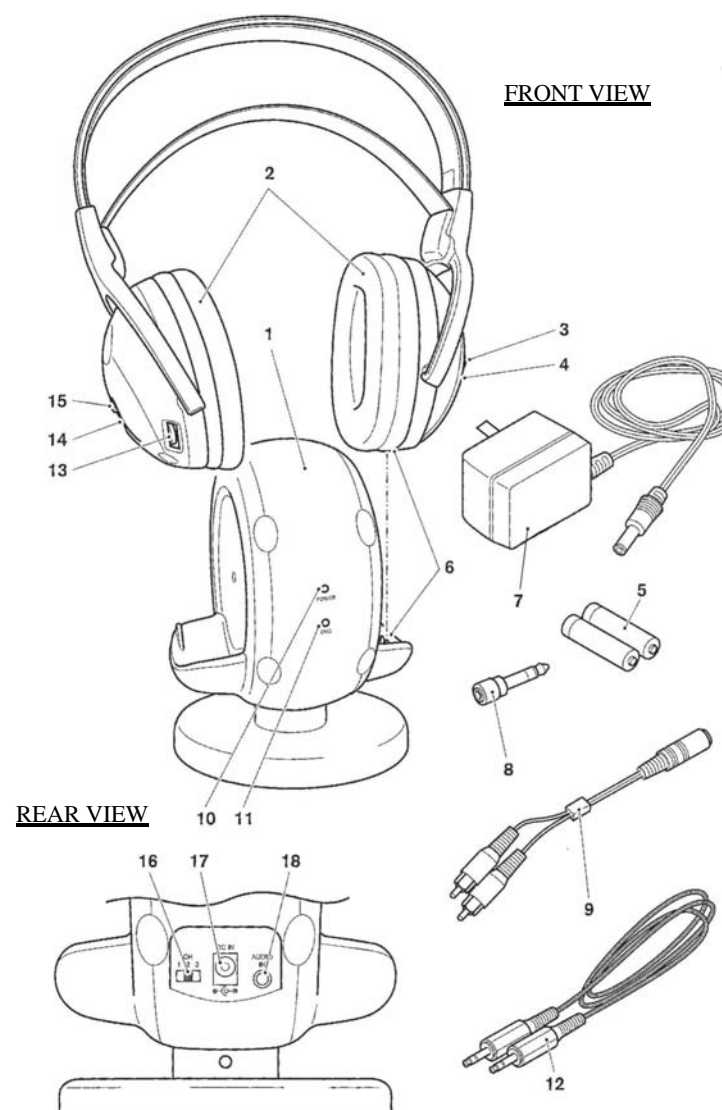
INTRODUCTION

This 900 MHz compact stereo headphones takes advantage of the very latest advances in wireless transmission technology so that you can listen to music or the sound from your TV set both in the house and outdoors. All you have to do is connect the transmitter to any audio source: DVD player, CD player, TV set, VCR, Hi-Fi system or radio (range 50 meters).

FEATURES

1. Auto Scanning system on headphone
2. Phase Lock Loop (PLL) transmission system on transmitter
3. Automatic battery recharging (batteries supplied).
4. 900 MHz RF technology.
5. RF technology leaves you completely free to move around.
6. Transmission is not restricted solely to line of sight.
7. Rechargeable receiver headphones.
8. Charger built into the transmitter.
9. High quality stereo sound that is virtually interference-free.
10. Automatic Level Control (ALC) and Auto On/Off function.

COMPONENT IDENTIFICATION



COMPONENT IDENTIFICATION

- 1** RF transmitter
- 2** RF receiver headphones
- 3** Power On/Off switch
- 4** Power On indicator light
- 5** Rechargeable batteries (LR03/AAA size)
- 6** Charge contacts
- 7** 12 V 200 mA mains adapter
- 8** Jack plug adapter (3.5 mm/6.3 mm diameter)
- 9** RCA socket audio adapter
- 10** Operating indicator light
- 11** Charge indicator light
- 12** Audio connection cable with 3.5 mm jack plug
- 13** Volume control knob (VOL)
- 14** AUTO SCAN indicator
- 15** AUTO SCAN button
- 16** Channel selector (CHANNEL 3 2 1)
- 17** DC IN connector
- 18** Audio input cable

INSTALLATION

TRANSMITTER

1. Connect the mains adapter provided to an electrical outlet.
2. Connect the mains adapter cable to the DC IN input connector located on the transmitter rear panel.
3. A cable is provided from the transmitter rear panel that can be connected to the audio outputs (Left and Right) present on a TV set, Hi-Fi system, VCR or radio-cassette player, or to a headphones/earphones output using the connector supplied.

The red Auto On indicator light will light up as soon as you have connected the power adapter to the mains outlet and the audio cable to a signal source. If the Auto On indicator light remains off, switch on the audio source and increase its output level until the red indicator light comes on.

RECEIVER HEADPHONES

1. Open the cover of the battery compartment located on the right hand receiver headphone.
2. Insert two rechargeable LR03/AAA size batteries taking care to ensure correct polarity.
3. Close the battery compartment cover.

OPERATION

1. Switch on the sound source (TV set or audio component) that the transmitter is connected to.
2. Place the headphones On/Off switch in the On position.
3. Place the headphones on your head and adjust the volume to obtain the desired sound level.
4. If you cannot find the best reception frequency, press the "Auto Scan" button on the headphones. The corresponding indicator light will come on.

NOTE:

You should then be able to move around freely from one room to another without any interference. If interference does occur (interruptions in the signal), press the "Auto Scan" button once to find a better reception channel.

- A** For better stereo reception, stay approximately seven meters away from the transmitter when you press the "Auto Scan" button.
- B** If it is impossible to find a satisfactory frequency, change the setting on your transmitter, then press the "Auto Scan" button on the headphones to find the corresponding channel.

To both protect the transmitter and save power, the transmitter automatically switches off after approximately four minutes if the signal that it receives from the audio source is too weak for proper reception. If however the signal returns to an acceptable level, then the transmitter automatically switches back on.

CHARGING THE BATTERIES

1. Place the On/Off switch on the receiver headphones in the Off position.
2. To recharge the headphone batteries, place the headphones on the transmitter, taking care to ensure that the charge contacts touch the transmitter's charge prongs.
3. The charge process starts automatically and the green indicator light comes on. Be sure to charge new batteries for 24 hours before using them for the first time in the headphones.

WARNING:

Never attempt to recharge conventional dry cells.

Never use another type of battery or non-rechargeable batteries to replace the rechargeable (LR03/AAA) batteries supplied. When the headphones are not in use, move the switch to the OFF position to avoid damaging the batteries.

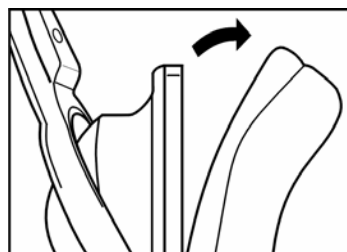
The batteries must always be fully charged before use. An initial 24 hour charge is required to guarantee an acceptable service life for the rechargeable batteries. Always ensure that the headphones are switched to the Off position while the batteries are charging.

IMPORTANT:

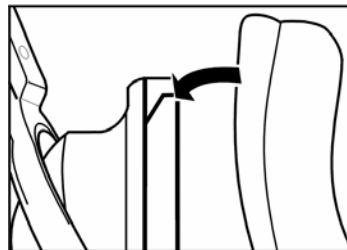
This unit should be operated with rechargeable batteries only. When replacing the batteries or when disposing of the unit, always comply with applicable laws relating to the disposal of batteries. Please place them in a proper disposal container to ensure that they are eliminated safely and in an environmentally-friendly way. Thank you.

REPLACING BATTERIES

Rechargeable batteries have a long service life. If it is however necessary to replace them, proceed as described below:



Carefully remove the cloth padding around the left and right headphones. Install the new batteries in their housings as illustrated. Check for correct +/- polarity.



Bring the cloth padding up over the sloped guide slot. Hold it in place with your thumb just after the slope to ensure that it does not leave the guide.



Turn the padding as illustrated. It will slide into the guide slot by itself. Keep turning it until it is correctly in place. Once it has taken on an oval shape, then it is correctly positioned.

Only use rechargeable batteries of the type specified under the “Technical specifications” heading.

The rechargeable batteries supplied with the headphones must absolutely not be taken apart, disposed of in an open fire or short circuited.

TECHNICAL SPECIFICATIONS

Transmission mode	: UHF stereo
Carrier frequency	: 900MHz
Operating voltage	: Transmitter – 12 V 200 mA Receiver – 2.4 V (two rechargeable batteries, LR03/AAA size)
Frequency response	: 30 Hz – 11 KHz
Distortion	: <1.5%
Signal-to-noise ratio	: >50 dB
Channel separation	: 30 dB
Range	: 50 meters (open area)

TROUBLE SHOOTING

NO SOUND

- Ensure that the mains adapter is pushed fully into the power outlet and that its cable is properly connected to the DC IN 12V connector on the transmitter.
- Ensure that the headphones On/Off switch is switched to the On
- The headphones battery charge level may be too low. Recharge the batteries or replace them with fully charged batteries.
- Ensure that your TV set, Hi-Fi system or audio component is switched on and set to a channel that broadcasts an audio signal.
- Use the headphones volume control to increase the sound level.
- The connected audio/video equipment may not be in playback mode. Start playback on by the equipment.
- The headphones output level is set too low. Adjust the volume to a suitable level.

DISTORTION

- Ensure that the "Stereo" indicator is lit. If not, adjust the tuning control (Auto Scan) on the headphones until it lights.
- Use the channel selector to change the transmitter's transmission frequency. Then you will need to adjust the tuning control on the headphones until the "Stereo" indicator comes on.
- The headphones battery charge level may be too low. Recharge the batteries or replace them with fully charged batteries.
- Ensure that the volume knob setting is correct.
- The headphones may be too far away from the transmitter. Move closer to it.
- The audio signal input level is too low. Increase the volume from the audio source.